



D035BS001-00  
UK  
Version 0

# Quick Setup Guide



DCP-L8630CDW / MFC-L8730CDW / MFC-L8970CDW / MFC-EX570

Read the *Product Safety Guide* first, then read this *Quick Setup Guide* for the correct installation procedure.  
Not all models are available in all countries.

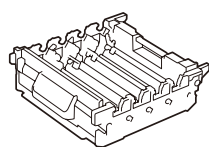
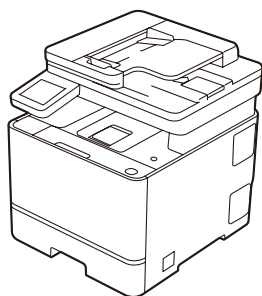
EN



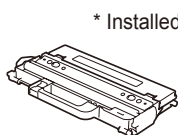
The latest manuals are available at the Brother support website:  
[support.brother.com/manuals](http://support.brother.com/manuals)



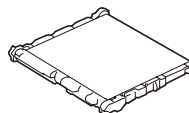
## Unpack the machine and check the components



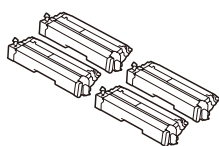
Drum Unit\*



Waste Toner Box\*



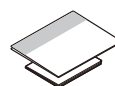
Belt Unit\*



Toner Cartridges\*  
(Black, Cyan, Magenta,  
and Yellow)



AC Power Cord



Quick Setup Guide  
Product Safety Guide

### NOTE:

- The components included in the box may differ depending on your country.
- The available connection interfaces vary depending on the model. You must purchase the correct interface cable if you require one.

#### - USB cable

We recommend using a USB 2.0 cable (Type A/B) that is no more than 2 metres long.

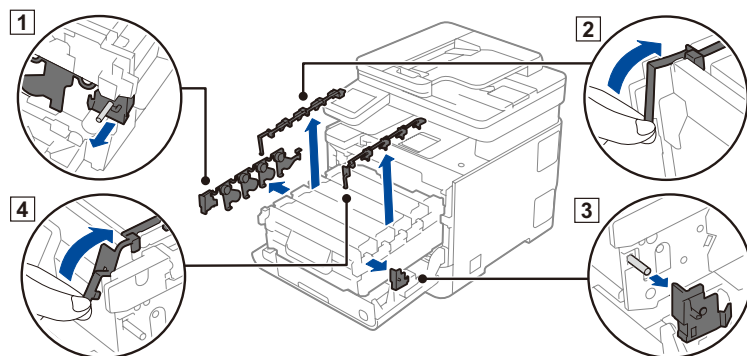
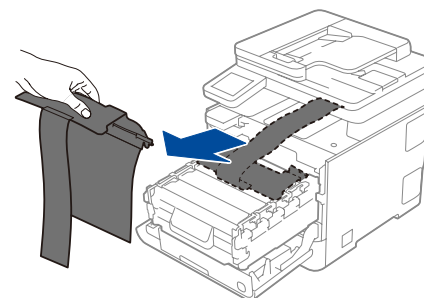
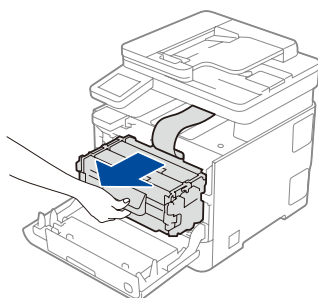
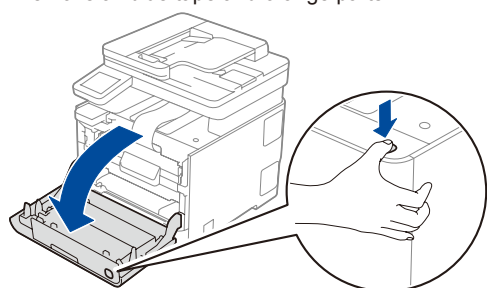
#### - Network cable

Use a straight-through Category 5e (or greater) twisted-pair cable.

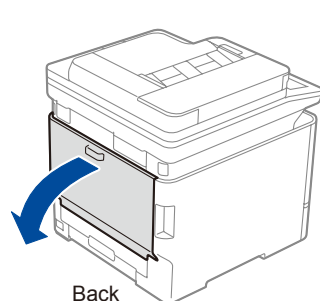
- The illustrations in this *Quick Setup Guide* show the MFC-L8730CDW.
- Brother aims to reduce waste and save both raw materials and the energy required to produce them. Read more about our environmental work at [www.brotherearth.com](http://www.brotherearth.com).
- Save all packing materials and the box in case you need to ship your machine.

## 1 Remove packing materials from the toner cartridge and drum unit assembly

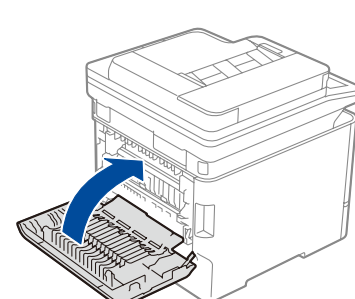
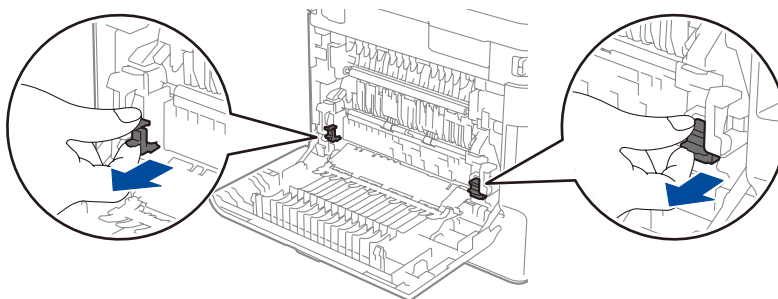
Remove all blue tape and orange parts.



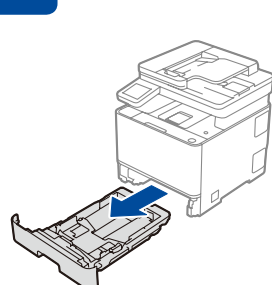
## 2 Remove packing materials from the fuser unit



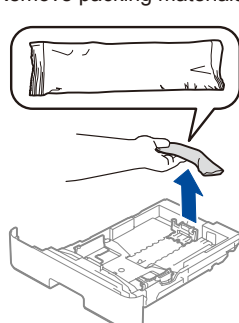
Back



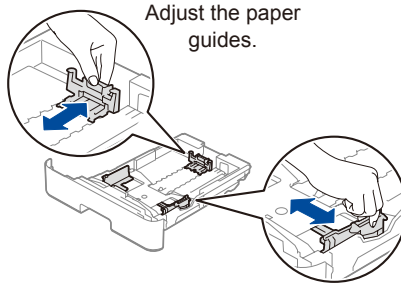
## 3 Load paper in the paper tray



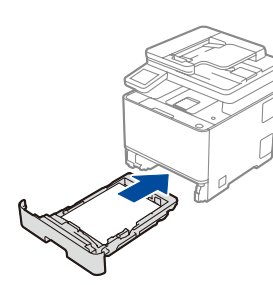
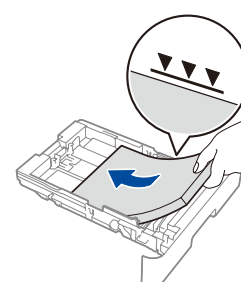
Remove packing materials.



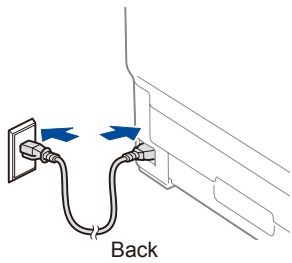
Adjust the paper guides.



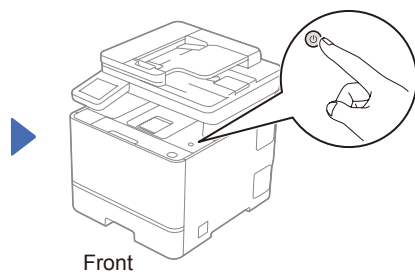
Do not exceed this mark.



## 4 Connect the power cord and turn the machine on



**NOTE:**  
Before connecting the power cord, locate the Serial Number and password (marked "Pwd:") label on the back or side of the machine. Record them for future use.



## 5 Select your country/language (Initial setup only)

After turning the machine on, you may be required to set your country or language (depending on your machine).  
If required, follow the Touchscreen instructions.

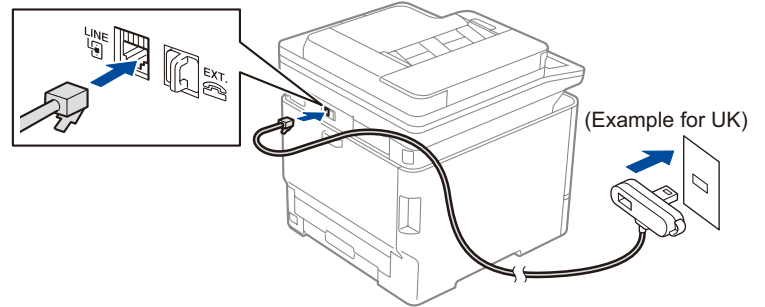
## 6 Select your language (if needed)

- On the machine's Touchscreen, press [Settings]\* > [All Settings] > [Initial Setup] > [Local Language].
- Press your language.
- Press .

\* If your machine displays the [All Settings] menu on the Home screen, start from [All Settings].

## 7 Connect the telephone line cord (For MFC models)

If you do not plan to use the fax feature on this machine, go to step **8**.



(For Europe)  
We can send you a genuine Brother cord free of charge if you need one. To contact us, visit [www.brother.eu](http://www.brother.eu).

## 8 Connect your computer or mobile device to your machine

Follow these steps to complete the setup using one of the connection types available on your machine.

Visit [setup.brother.com](http://setup.brother.com) to download and install Brother software.

Follow the on-screen instructions and prompts.

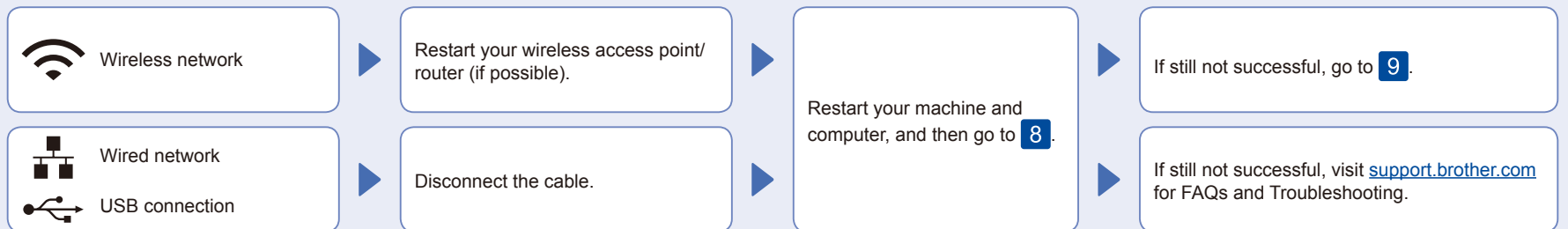
**Setup Finished**

You can now print and scan using your machine.

### Important Notice for Network Security:

We recommend immediately changing the default password to protect your machine from unauthorised access.

### Can't Connect? Check the following:

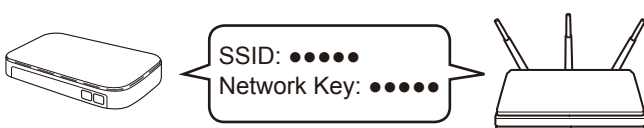


## 9 Manual wireless setup (for wireless models only)

If the wireless setup is not successful, try to set up the connection manually.

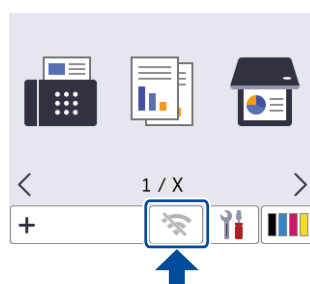
Find your SSID (Network Name) and Network Key (Password) on your wireless access point/router and write them in the table provided below.

|                        |  |
|------------------------|--|
| SSID (Network Name)    |  |
| Network Key (Password) |  |



If you cannot find this information, ask your network administrator or wireless access point/router manufacturer.

Press > [Find Wi-Fi Network]. Follow the Touchscreen instructions.



Select the SSID (Network Name) for your access point/router and enter the Network Key (Password).

When the wireless setup is successful, the Touchscreen displays [Connected].

Go to **8** to install software.

If setup is unsuccessful, restart your Brother machine and your wireless access point/router, and repeat **9**.