



D035AH001-00
USA/CAN
Version 0

Quick Setup Guide

brother

HL-L8430CDW / HL-L8430CDWT / HL-L8570CDW

Read the *Product Safety Guide* first, then read this *Quick Setup Guide* for the correct installation procedure.
Not all models are available in all countries.

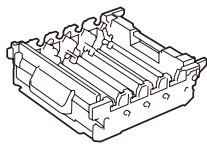
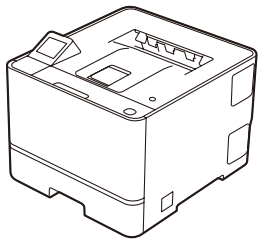
EN



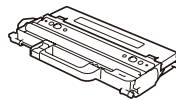
The latest manuals are available at the Brother support website:
support.brother.com/manuals



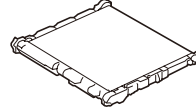
Unpack the machine and check the components



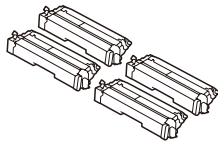
Drum Unit*



Waste Toner Box*



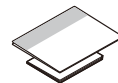
Belt Unit*



Toner Cartridges*
(Black, Cyan, Magenta,
and Yellow)



AC Power Cord



Quick Setup Guide
Product Safety Guide

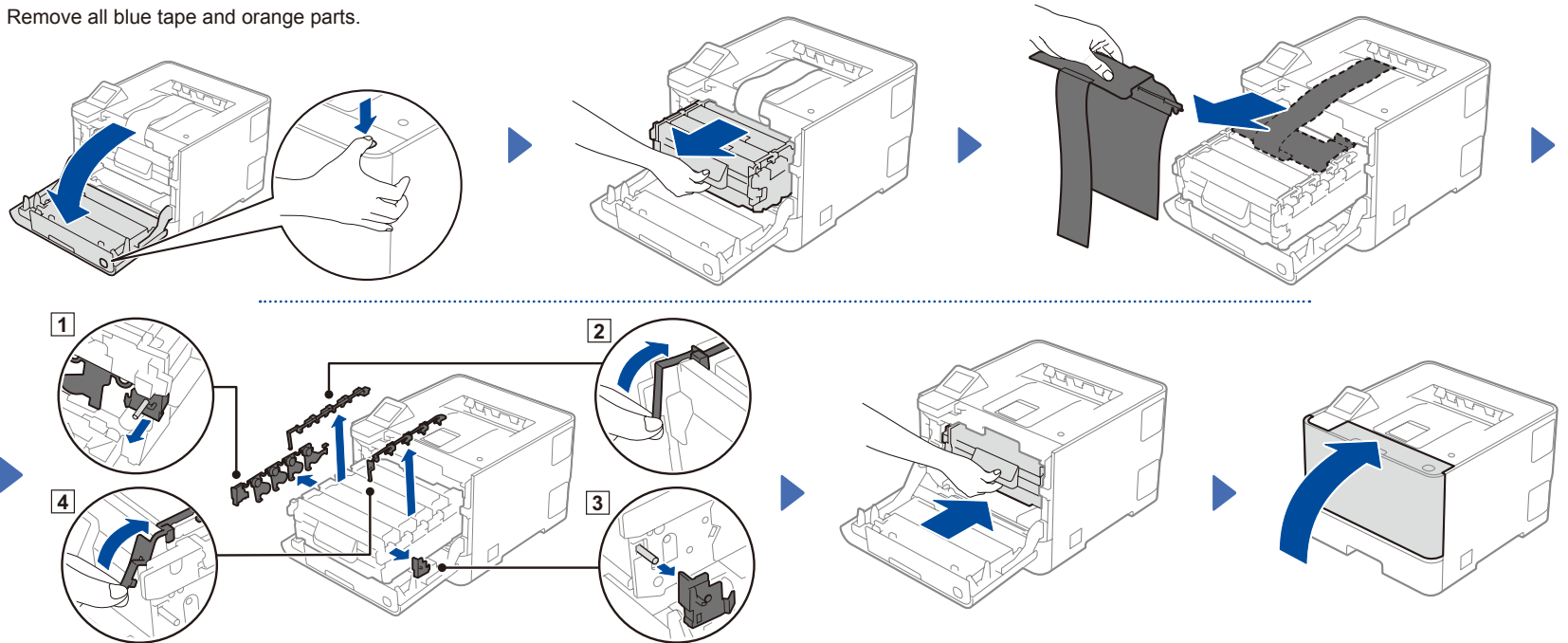
* Installed in the machine

NOTE:

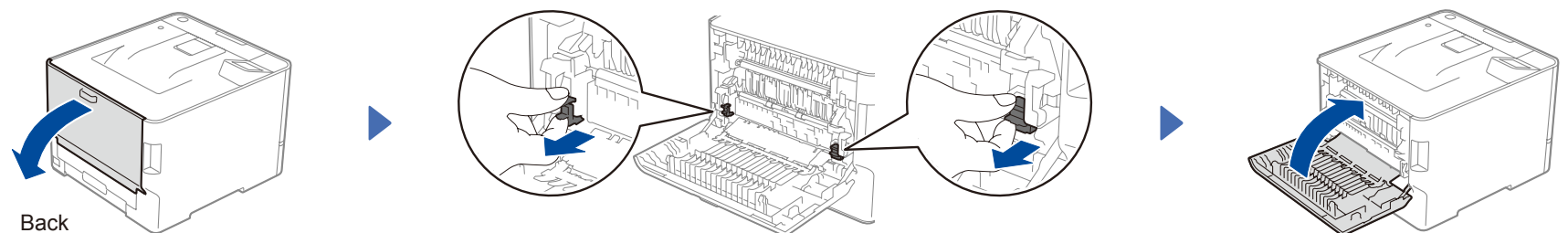
- Manuals in Spanish for this model are available at support.brother.com.
Manuales en Español para este modelo están disponibles en support.brother.com.
- The components included in the box may differ depending on your country.
- The available connection interfaces vary depending on the model. You must purchase the correct interface cable if you require one.
 - **USB cable**
We recommend using a USB 2.0 cable (Type A/B) that is no more than 6 feet (2 meters) long.
 - **Network cable**
Use a straight-through Category 5e (or greater) twisted-pair cable.
- The illustrations in this *Quick Setup Guide* show the HL-L8570CDW.
- Save all packing materials and the box in case you need to ship your machine.

1 Remove packing materials from the toner cartridge and drum unit assembly

Remove all blue tape and orange parts.

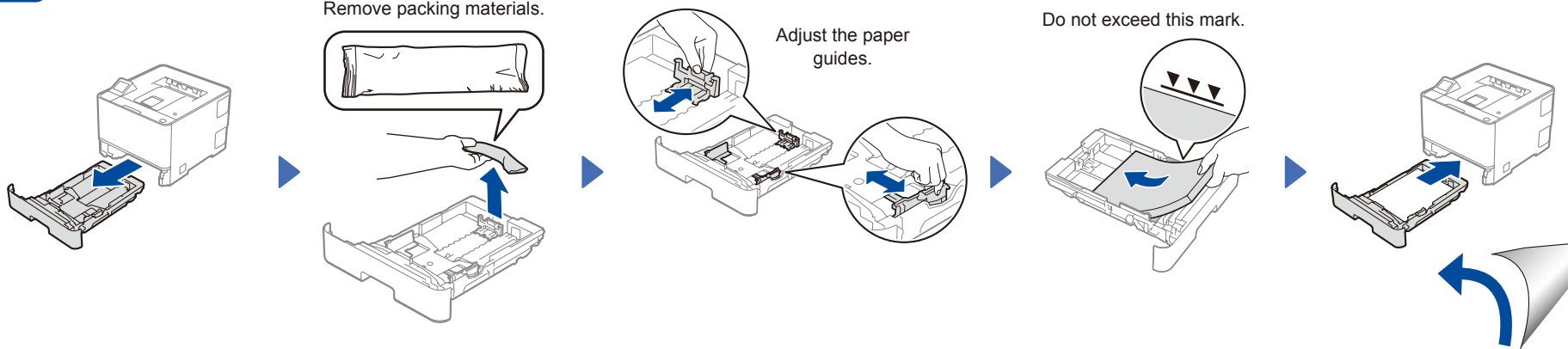


2 Remove packing materials from the fuser unit



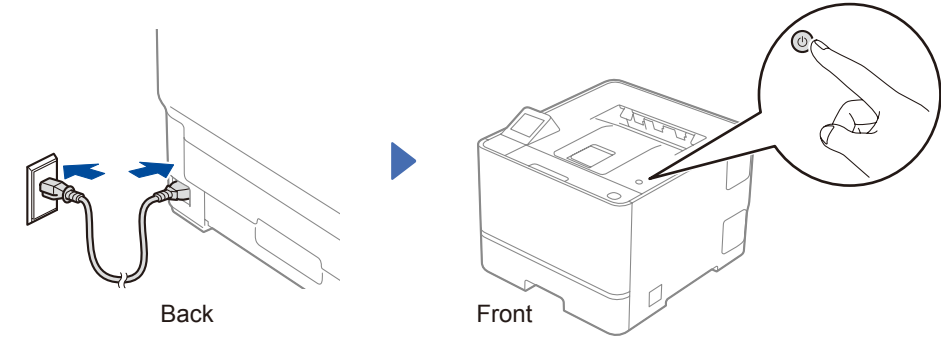
3 Load paper in the paper tray

Remove packing materials.



4

Connect the power cord and turn the machine on

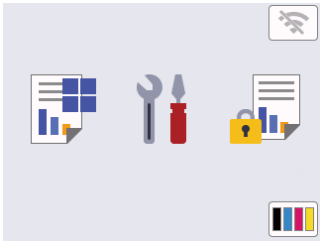


NOTE:
Before connecting the power cord, locate the Serial Number and password (marked "Pwd:") label on the back or side of the machine. Record them for future use.

5

Select your language (if needed)

- On the machine's Touchscreen, press [Settings] > [All Settings] > [Initial Setup] > [Local Language].
- Press your language.
- Press .

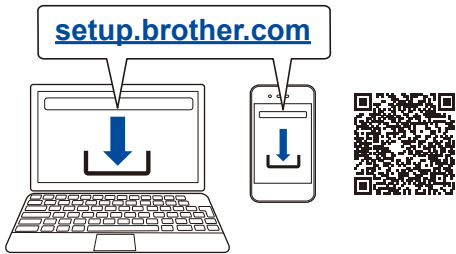


6

Connect your computer or mobile device to your machine

Follow these steps to complete the setup using one of the connection types available on your machine.

Visit setup.brother.com to download and install Brother software.



Follow the on-screen instructions and prompts.

Setup Finished

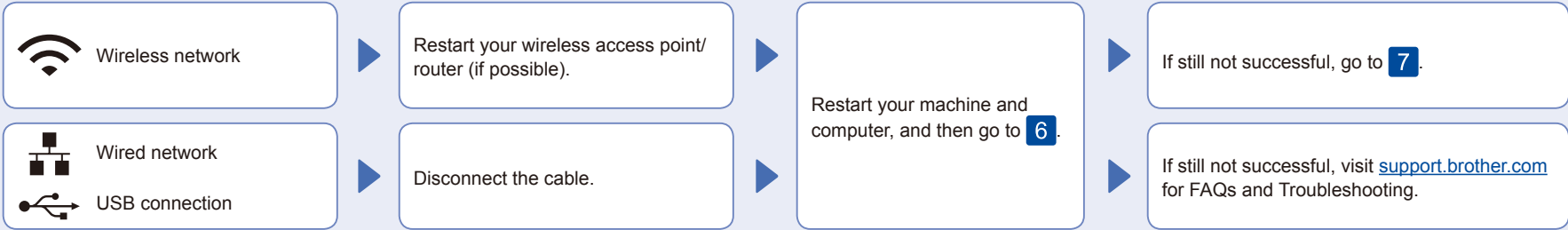
You can now print using your machine.

Important Notice for Network Security:
We recommend immediately changing the default password to protect your machine from unauthorized access.

Before connecting your machine to a 5 GHz Wi-Fi® network, confirm the channels that your machine supports. Go to support.brother.com/g/d/a5m6/, select your product, and then click **Download** for more information.



Can't Connect? Check the following:



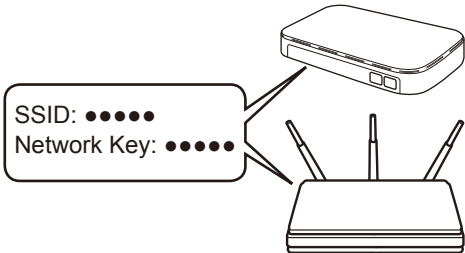
7

Manual wireless setup (for wireless models only)

If the wireless setup is not successful, try to set up the connection manually.

Find your SSID (Network Name) and Network Key (Password) on your wireless access point/router and write them in the table provided below.

SSID (Network Name)	
Network Key (Password)	



Press > [Find Wi-Fi Network]. Follow the Touchscreen instructions.



Select the SSID (Network Name) for your access point/router and enter the Network Key (Password).

When the wireless setup is successful, the Touchscreen displays [Connected].

Go to 6 to install software.

If setup is unsuccessful, restart your Brother machine and your wireless access point/router, and repeat 7.

If you cannot find this information, ask your network administrator or wireless access point/router manufacturer.