



Cubi Series

Personal Computer

Cubi NUC AI+ 2MG
(MS-B206)

Service Guide

Contents

Copyright and Trademarks Notice.....5

Revision.....5

How to Use this Service Guide.....5

Safety Instructions6

 Power.....6

 Battery.....6

 Environment6

Conditional Warranty Service.....7

Upgrade and Service7

Data Sanitization.....7

Publicly Available Service Information.....8

Disassembly & Assembly 9

Product Components and Accessories.....10

Product Upgradeability and Repairability12

Recommended Tools.....13

Screw List.....13

Preparation for Disassembly14

Bottom Bracket16

 Bottom Bracket Disassembly 16

 Bottom Bracket Assembly 17

Speaker18

 Speaker Disassembly..... 18

 Speaker Assembly..... 19

External Power Switch Cable (Optional)20

 External Power Switch Cable Disassembly..... 20

 External Power Switch Cable Assembly..... 21

Solid State Drive22

 Solid-State Drive Disassembly 22

 Solid-State Drive Assembly 23

Wireless Card	24
Wireless Card Disassembly	24
Wireless Card Assembly	25
Coin Battery	26
Coin Battery Disassembly	26
Coin Battery Assembly	27
Mainboard	28
Mainboard Disassembly	28
Mainboard Assembly	29
Fan & Heat Sink	30
Fan & Heat Sink Disassembly	30
Fan & Heat Sink Assembly	31
TPM Module	32
TPM Module Disassembly	32
TPM Module Assembly	33
Top Bracket	34
Top Bracket Disassembly	34
Top Bracket Assembly	35
Fingerprint Module	36
Fingerprint Module Disassembly	36
Fingerprint Module Assembly	37
Antenna Module	38
Antenna Module Disassembly	38
Antenna Module Assembly	39
Microphone Module	40
Microphone Module Disassembly	40
Microphone Module Assembly	41
Wireless Keyboard (Optional)	42
Wireless Keyboard Disassembly	42
Wireless Keyboard Assembly	43
Wireless Mouse (Optional)	44
Wireless Mouse Disassembly	44
Wireless Mouse Assembly	44

Wired Mouse (Optional)	45
Wired Mouse Disassembly.....	45
Wired Mouse Assembly.....	45
Wired Keyboard (Optional)	46
Wired Keyboard Disassembly.....	46
Wired Keyboard Assembly.....	47
Powering Up After Maintenance.....	48
Troubleshooting.....	49
Recycling Guidelines.....	51
Top Cover	51
External Power Supply.....	52
Wireless Keyboard (Optional)	53
Wireless Mouse (Optional).....	53
Wired Mouse (Optional).....	53
Wired Keyboard (Optional).....	53
Product End-of-Life Instructions.....	54
Purpose	54
Information on Component and Material Identification	54
Product Take-Back Service	56
Using MSI Center	57
Login and Register	58
Create an Account.....	58
Product Registration	59
Feature Sets	60
Hardware Monitoring	61
Features	62
System Diagnosis.....	63
Support	64
Live Update	64
System Info.....	65
Service.....	66

Copyright and Trademarks Notice

Copyright © 2023 Micro-Star Int'l Co., Ltd. All rights reserved.

The MSI logo used is a registered trademark of Micro-Star Int'l Co., Ltd. Third-party trademarks and names are the properties of their respective owners. No warranty as to accuracy or completeness is expressed or implied. MSI reserves the right to make changes to this document without prior notice.

Revision

V1.0, 2025/04

How to Use this Service Guide

This Service Guide provides in-depth illustration of disassembling/assembling the product. Since the topics in this guide may be related, it is recommended that you read it from cover to cover first. After that, you may go directly to any specific topic that most meets your immediate needs.

Safety Instructions

Adhere to safety precautions when handling the product to prevent harm or damage to individuals or the product's functionality.

Power

- If the power cord comes with a 3-pin plug, do not disable the protective earth pin from the plug. The product must be connected to an earthed mains socket-outlet.
- Disconnect all power sources and place the product on a steady surface before disassembly/assembly.
- When unplugging the power cord, always hold the connector part of the cord. Never pull the cord directly.
- Place the power cord in a way that people are unlikely to step on it. Do not place anything on top of the power cord.
- If this product comes with an adapter, use only the MSI provided AC adapter approved for use with this product.

Battery

Please take special precautions if this product comes with a battery.

- Danger of explosion if battery is incorrectly replaced. Replace only with the same or equivalent type recommended by the manufacturer.
- Avoid disposal of a battery into fire or a hot oven, or mechanically crushing or cutting of a battery, which can result in an explosion.
- Avoid leaving a battery in an extremely high temperature or extremely low air pressure environment that can result in an explosion or the leakage of flammable liquid or gas.
- Do not ingest battery. If the coin/button cell battery is swallowed, it can cause severe internal burns and can lead to death. Keep new and used batteries away from children.

Environment

- Do not place the product in environments subject to mist, smoke, vibration, excessive dust, salty or greasy air, or other corrosive gases and fumes.
- To avoid electrostatic discharge, use an anti-static wrist strap before handling components. Always handle electrostatic-sensitive components, parts, and assemblies only at static-free work areas.
- Handle components with care. Do not touch the pins or contacts on a component.
- Place components on a grounded anti-static pad or on the bed that came with the components whenever the components are separated from the product.
- Do not perform any maintenance with wet hands.
- Prevent foreign substances, such as water, other liquids or chemicals, from entering the product while performing disassembly/assembly.
- After assembly, ensure that all screws are replaced and no stray screws remain inside the product.

Conditional Warranty Service

MSI provides a conditional warranty service for selected models. Please visit [MSI Member Center](#) for further information.

Upgrade and Service

Available hardware features may only be offered as part of an upgrade, repair, or replacement service offered by MSI or an authorized service provider.

MSI offers customers replacement parts, product repair and services for 3 years from the date of sale for all EPEAT-registered products.

Damages caused by servicing of products not authorized by MSI or the use of modified or non-MSI authorized parts or components are not covered by MSI Limited Warranty Agreement.

Visit [MSI Service Location](#) to obtain these services offered by MSI.

Go to [MSI Web Ticket](#) to receive further assistance if needed.

Data Sanitization

MSI will not assume any responsibility or confidentiality obligation for the security of any data stored on the equipment submitted for recycling. Users are advised to back up and remove all data from the computers.

Before recycling, we recommend that users follow instructions on [Data Sanitization](#) to permanently and irreversibly remove all personal files, applications and settings from the computers.

Publicly Available Service Information

Service Information	Section
Disassembly instructions including identifying the required tools.	<i>Product Components and Accessories</i> <i>Recommended Tools</i>
Exploded diagram of parts.	<i>Product Components and Accessories</i>
List of spare parts including manufacturer-approved spare parts and how to obtain them.	<i>Product Upgradeability and Repairability</i>
Maintenance procedures or guidance on where to obtain the procedures.	<i>System Diagnosis</i>
Troubleshooting instructions, software diagnostic tools, troubleshooting videos or other troubleshooting guidance.	<i>Troubleshooting</i> <i>Service > Troubleshooting</i>
Instructions on how to obtain software updates (not applicable to display products).	<i>Support</i>
Instructions on how the user can remove personal data. If the instructions require destruction of the storage, instructions to replace the storage shall be provided (not applicable to display products).	<i>Data Sanitization</i>

It is acceptable for service instructions to exclude information that, as determined by the manufacturer:

a) May expose the user to risk of injury, or	N/A
b) Breaches intellectual property rights, or	N/A
c) Compromises user privacy or security, or	N/A
d) Involves the disassembly of a battery pack or power supply	N/A
If claiming any of the four exclusions above the manufacturer shall demonstrate how the product is restored to normal operating condition after being repaired. Repair may include replacement of the component(s) associated with the exclusion.	N/A

Disassembly & Assembly

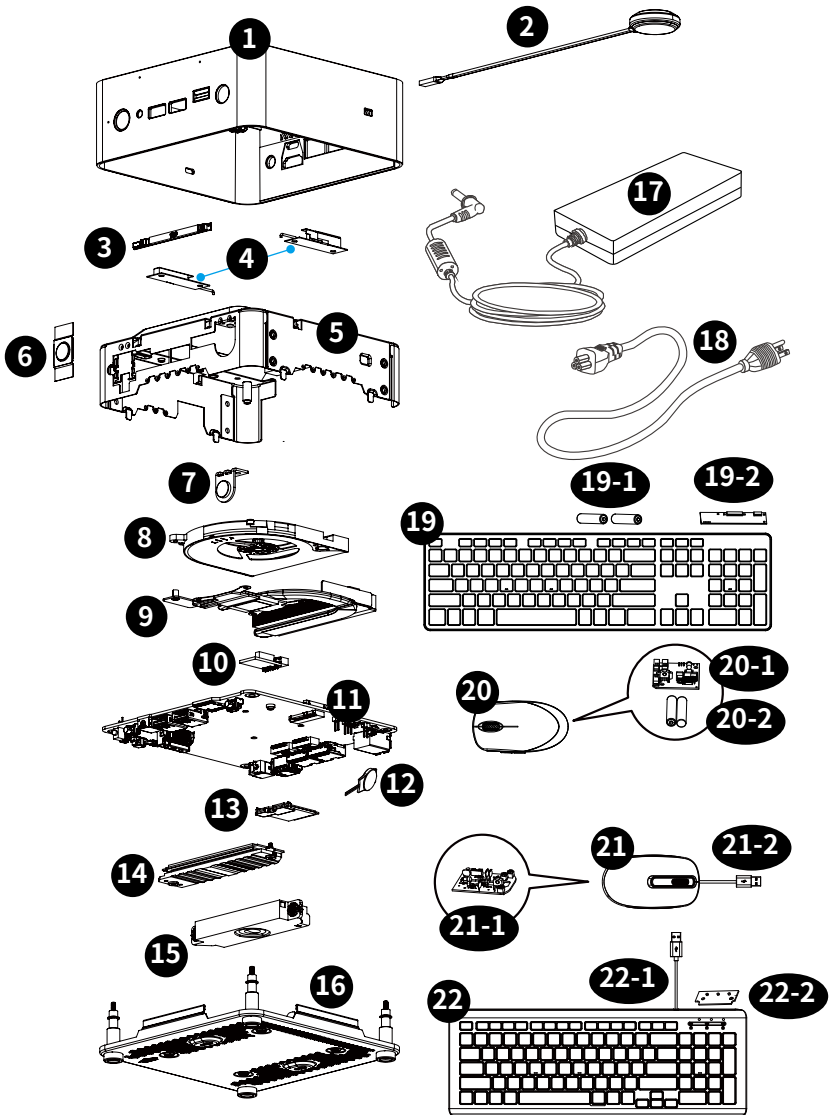
Product Components and Accessories



Important

MSI provides the below list of components for the system configuration purchased and within 2 years after discontinuation of the product to increase the operational life of that product. Further services can be obtained by contacting [MSI Online Customer Service](#).

1. [Top Cover](#)
2. [External Power Switch Cable \(Optional\)](#)
3. [Microphone Module](#)
4. [Antenna Module](#)
5. [Top Bracket](#)
6. [Fingerprint Module](#)
7. [Copilot Button](#)
8. [Fan](#)
9. [Heat Sink](#)
10. [TPM Module](#)
11. [Mainboard](#)
12. [Coin Battery](#)
13. [Wireless Card](#)
14. [Solid State Drive](#)
15. [Speaker](#)
16. [Bottom Bracket](#)
17. [External Power Supply](#)
18. Power Cord
19. [Wireless Keyboard \(Optional\)](#)
 - 19-1. [Wireless Keyboard Battery \(Optional\)](#)
 - 19-2. [Wireless Keyboard PCB \(Optional\)](#)
20. [Wireless Mouse \(Optional\)](#)
 - 20-1. [Wireless Mouse PCB \(Optional\)](#)
 - 20-2. [Wireless Mouse Battery \(Optional\)](#)
21. [Wired Mouse \(Optional\)](#)
 - 21-1. [Wired Mouse PCB \(Optional\)](#)
 - 21-2. [Wired Mouse USB Cable \(Optional\)](#)
22. [Wired Keyboard \(Optional\)](#)
 - 22-1. [Wired Keyboard USB Cable \(Optional\)](#)
 - 22-2. [Wired Keyboard PCB \(Optional\)](#)



Product Upgradeability and Repairability

Hardware features for upgradeable, repairable or replaceable using only commonly available tools and listing of replaceable spare parts by products can be obtained by contacting [MSI Online Customer Service](#).

Please refer to the following [hyperlinks](#) for specific details of the replacement or upgrade methods.

Hardware feature items	Upgradeable	Repairable	Replaceable	Soldering
The main processor(s) or system on a chip (SOC)	No	No	No	Yes
Main memory capacity of the system	No	No	No	No
Mass storage capacity of the system	Yes	No	Yes	No
Wireless networking capability	No	No	Yes	No
Graphics capability (integrated or discrete)	N/A	N/A	N/A	N/A
Display panel or display assembly	N/A	N/A	N/A	N/A
Integrated mechanical keyboards	N/A	N/A	N/A	N/A
All batteries	No	No	Yes	No
All external and internal power supplies	No	No	Yes	No
All fan assemblies	No	No	Yes	No
AND At least two of the following (or one, if all remaining are absent from product):	Upgradeable	Repairable	Replaceable	Soldering
Speakers	No	No	Yes	No
Camera	N/A	N/A	N/A	N/A
Touchpad	N/A	N/A	N/A	N/A
I/O connectors and external power connection	No	No	No	Yes
Readers (eg. magnetic stripe, Dallas key, fingerprint, Smart card)	Yes	No	Yes	Yes

Recommended Tools

The following tools may be needed while performing the disassembly and assembly procedures.

- Cross-head screwdriver
- Parallel screwdriver
- Tweezers
- Pry tool
- Needle-nose pliers
- Diagonal pliers
- Anti-static gloves
- Anti-static wrist strap (optional)
- Anti-static mat with grounding wire (optional)

Screw List

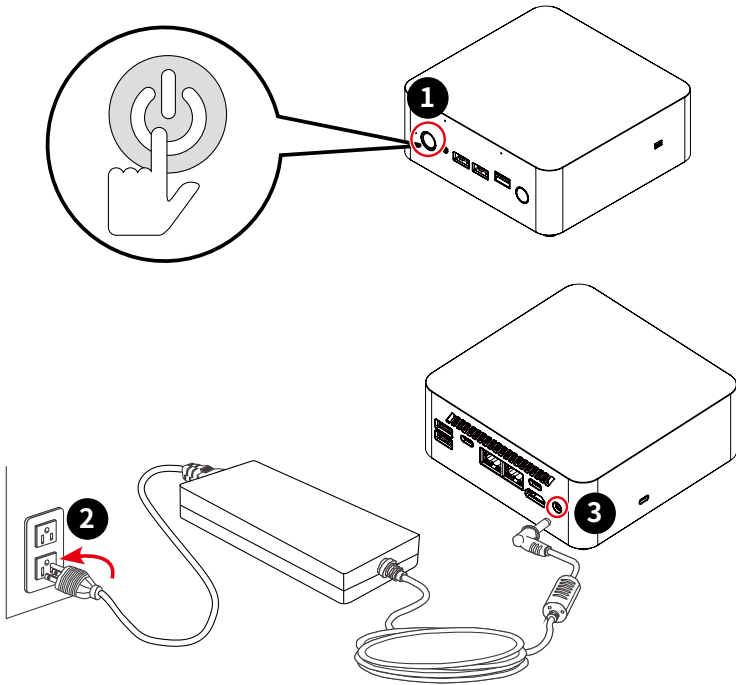
Please refer to the screw list below while proceeding the disassembly and assembly of the computer.

Note: This screw list is for reference only and may vary from models to models. It is highly recommended that users contact the authorized service center for further assistance.

Component	Screw Type	Quantity
Top Bracket	M3*4	4
Copilot Button	M3*4	2
Antennas	M3*4	4
Heat Sink	M2.5*4	4
Fan	M2.5*4	2
SSD Heat Sink	M3*3.5	1
SSD Heat Sink	M2*3.29 step	1
Wireless Card	M2*4 step	1
Speaker	M3*2.5 step	2
Speaker Bracket	M3*4	4
Mainboard/Bottom Bracket	M2.5*5 step	4

Preparation for Disassembly

1. Power off the PC.
2. Disconnect the power cord from the electrical outlet.
3. Disconnect the power cord from the PC.



Important

- *Disconnect all power sources and place the PC on a steady surface before disassembly/assembly.*
- *When unplugging the power cord, always hold the connector part of the cord. Never pull the cord directly.*
- *Do not place the PC in environments subject to mist, smoke, vibration, excessive dust, salty or greasy air, or other corrosive gases and fumes.*
- *To avoid electrostatic discharge, use anti-static gloves or an anti-static wrist strap before handling electrostatic-sensitive components.*
- *Do not perform any maintenance with wet hands.*
- *After assembly, ensure that all screws are replaced and no stray screws remain inside the PC.*



Bottom Bracket

Bottom Bracket Disassembly

1. Place the computer on a steady surface. Locate and remove the K-slot plug **1** with your fingertip.
2. Flip the computer over. Locate and remove the screws **2** that secure the bottom bracket **3** with a cross-head screwdriver. Open the bottom bracket, disconnect the speaker cable **4** to uncover the computer components.



Bottom Bracket Assembly

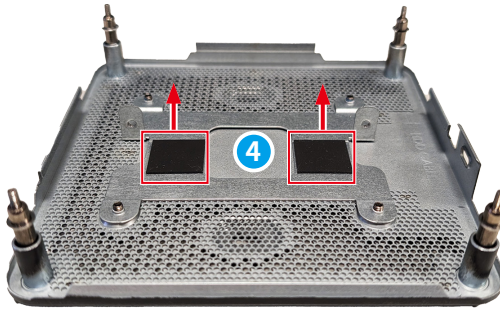
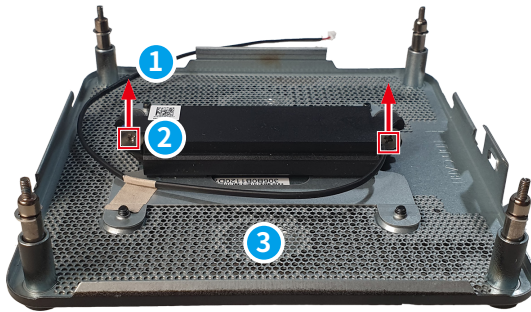
1. Connect the speaker cable **1**, place the bottom bracket **2** atop the computer with screw holes aligned.
2. Tighten the screws **3** with a cross-head screwdriver to secure the bottom bracket **2** in place.
3. Replace the K-slot plug **4** with your fingertip.



Speaker

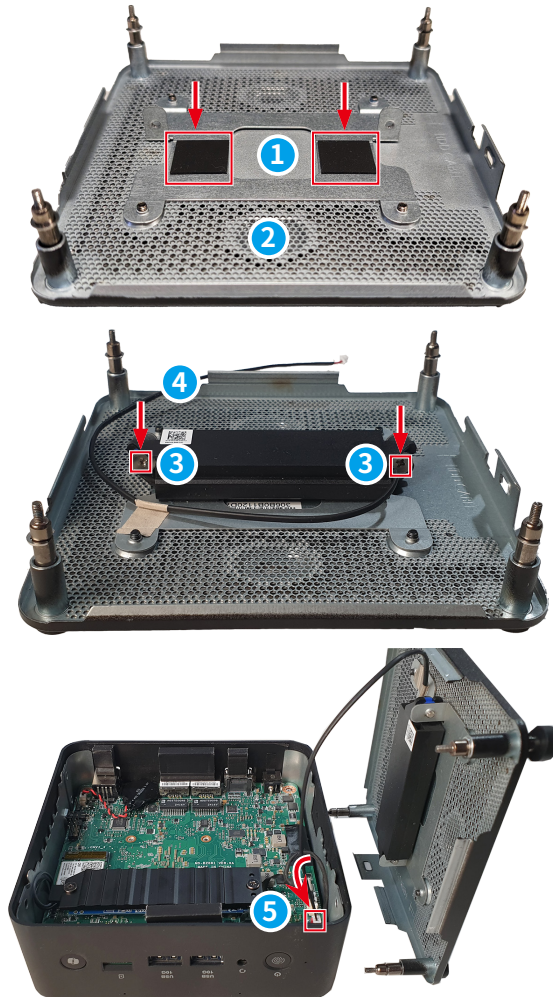
Speaker Disassembly

1. Follow [Bottom Bracket Disassembly](#) to disconnect the speaker cable **1**.
2. Remove the screws **2** that secure the speaker and bottom bracket **3** with a cross-head screwdriver. Tear off the rubber pads **4** underneath with your fingers.



Speaker Assembly

1. Use your finger to attach the rubber pads **1** in place on the bottom bracket **2**.
2. Replace and tighten the screws **3** that secure the speaker and the bottom bracket with a cross-head screwdriver.
3. Connect the speaker cable **4** to the mainboard **5**.



External Power Switch Cable (Optional)

External Power Switch Cable Disassembly

1. Hold the connector part of the external power switch cable ① and disconnect it from the computer.



External Power Switch Cable Assembly

1. Locate and remove the external power switch housing **1** with needle-nose pliers.
2. Hold the connector part of the external power switch cable **2** and connect it to the computer.



Solid State Drive

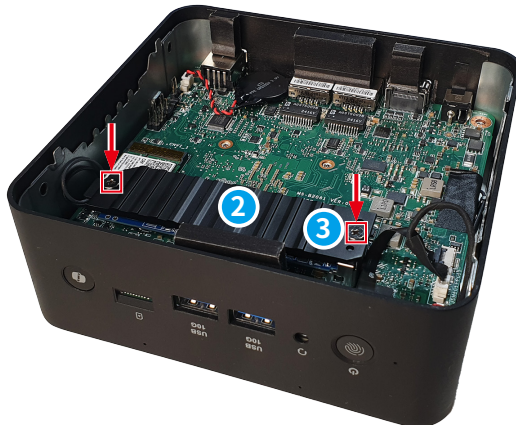
Solid-State Drive Disassembly

1. Remove the screws **1** that secure the solid-state drive & heat sink with a cross-head screwdriver.
2. Slide and remove the solid-state drive & heat sink **2** from the M.2 slot.



Solid-State Drive Assembly

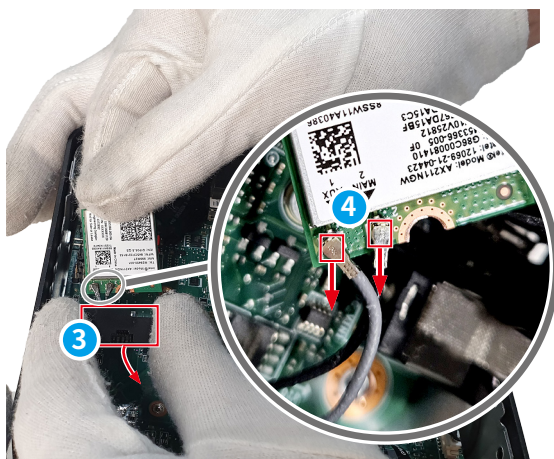
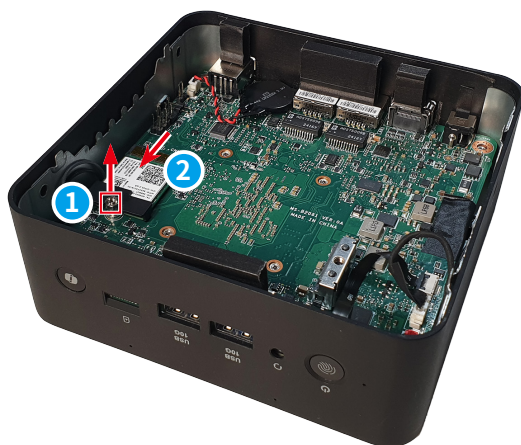
1. Align the notch on the solid-state drive with the tab on the M.2 slot.
2. Slide the solid-state drive ① into the M.2 slot.
3. Align and attach the heat sink ② onto the solid-state drive.
4. Replace and tighten the screw ③ with a cross-head screwdriver to secure the solid-state drive & heat sink in place.



Wireless Card

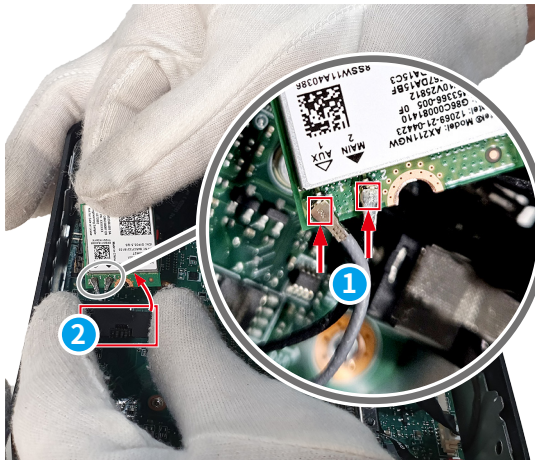
Wireless Card Disassembly

1. Follow [Solid-State Drive Disassembly](#) to remove the SSD and uncover the wireless card underneath.
2. Locate and remove the screw **1** that secures the wireless card with a cross-head screwdriver.
3. Remove the wireless card **2** from the card slot.
4. Locate and remove the wireless card clip **3**.
5. Disconnect the antenna cables **4**.



Wireless Card Assembly

1. Connect the antenna cables **1** to the wireless card. Make sure the black antenna cable is connected to MAIN and the gray antenna cable is connected to AUX.
2. Replace and secure the wireless card clip **2** onto the wireless card.
3. Align the notch on the wireless card with the key on the slot, and insert the wireless card **3** into the slot.
4. Gently push the wireless card downwards and use a cross-head screwdriver to secure the card with the screw **4**.





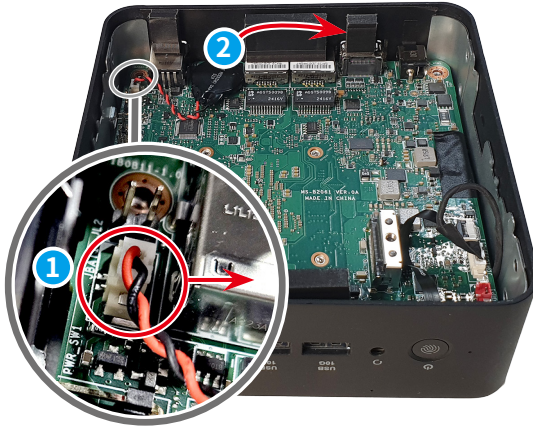
Coin Battery

Important

- *Danger of explosion if battery is incorrectly replaced. Replace only with the same or equivalent type recommended by the manufacturer.*
- *Avoid disposal of a battery into fire or a hot oven, or mechanically crushing or cutting of a battery, which can result in an explosion.*
- *Avoid leaving a battery in an extremely high temperature or extremely low air pressure environment that can result in an explosion or the leakage of flammable liquid or gas.*
- *Do not ingest battery. If the coin/button cell battery is swallowed, it can cause severe internal burns and can lead to death. Keep new and used batteries away from children.*

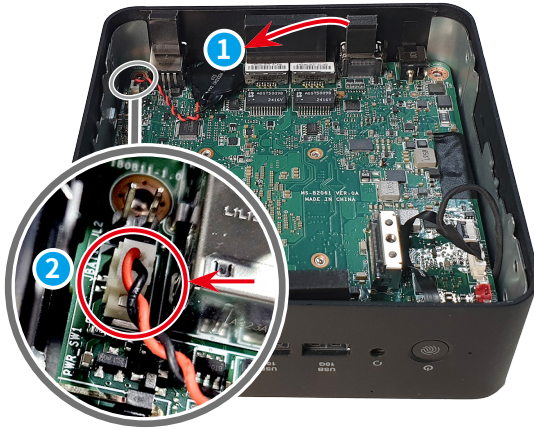
Coin Battery Disassembly

1. Locate and disconnect the coin battery cable .
2. Use your fingers to grab the edge of the coin battery  and gently pull it off. Remove the coin battery along with its cable from the mainboard.



Coin Battery Assembly

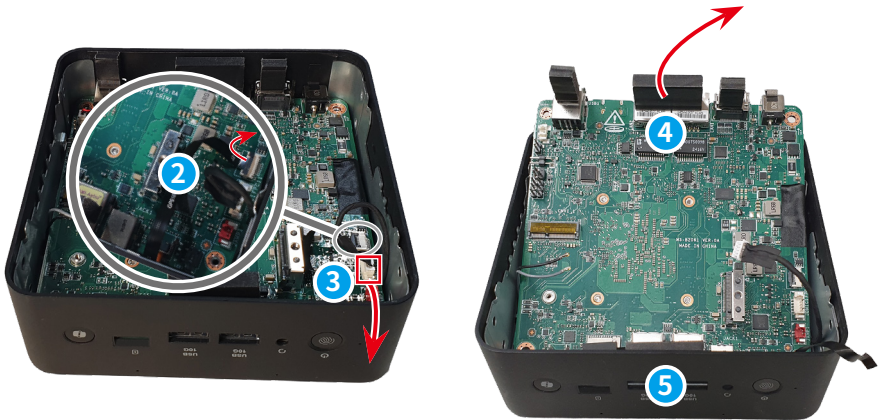
1. Replace the coin battery **1** and secure it with its adhesive tape underneath.
2. Connect the coin battery cable **2**.



Mainboard

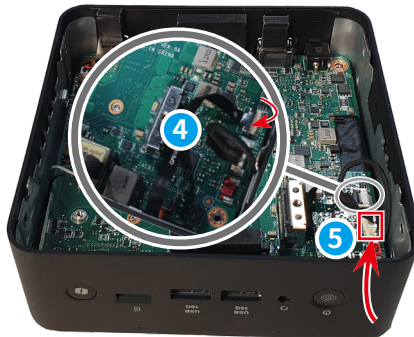
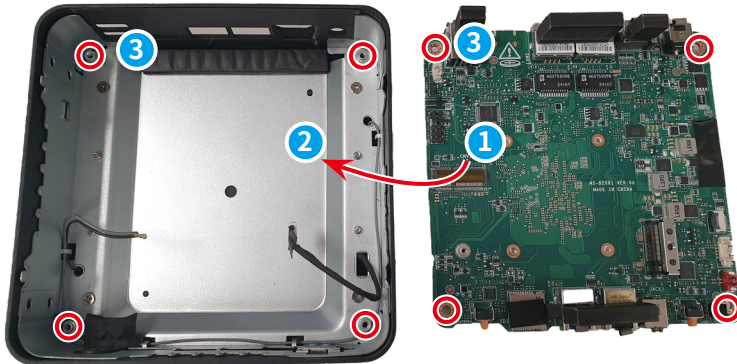
Mainboard Disassembly

1. Locate and remove the external power switch housing **1** with needle-nose pliers.
2. Flip the computer over. Disconnect the Fingerprint cable **2** by lifting the gray part with your fingernail, and the microphone cable **3**.
3. Pull the mainboard **4** off the top cover **5**.



Mainboard Assembly

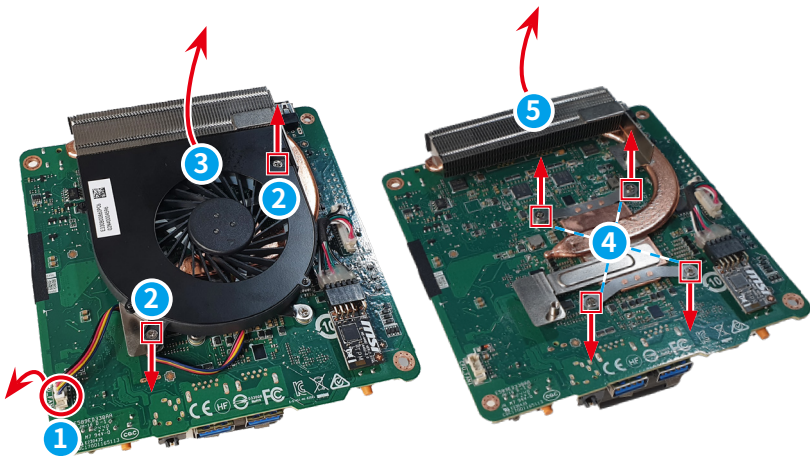
1. Check the mainboard **1** and the top bracket **2** for correct orientation of assembling and alignment of screw holes **3**. Place the mainboard **1** into the top bracket **2** and gently press down to fit the mainboard in place.
2. Connect the USB cable **4** by pressing down the gray part with your fingernail, and the microphone cable **5**.
3. Replace the external power switch housing **6** with needle-nose pliers.



Fan & Heat Sink

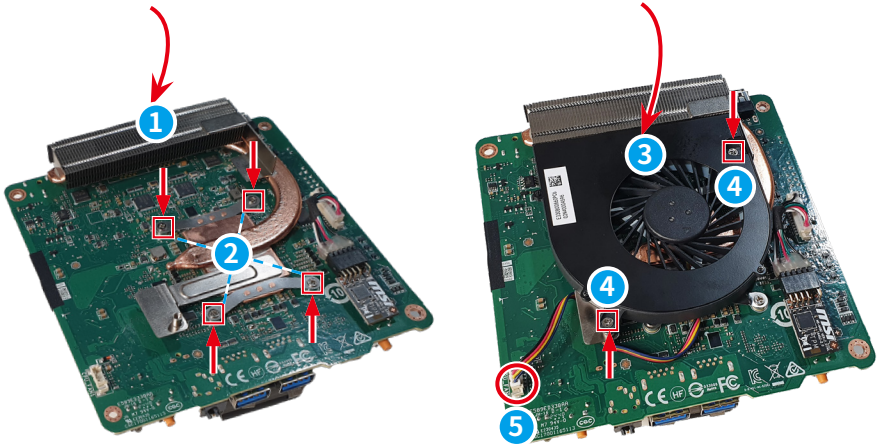
Fan & Heat Sink Disassembly

1. Disconnect the fan cable ① from the mainboard.
2. Remove the screws ② that secure the fan with a cross-head screwdriver.
3. Lift the fan ③ and its cable off the mainboard.
4. Remove the screws ④ that secure the heat sink with a cross-head screwdriver.
5. Lift the heat sink ⑤ off the mainboard.



Fan & Heat Sink Assembly

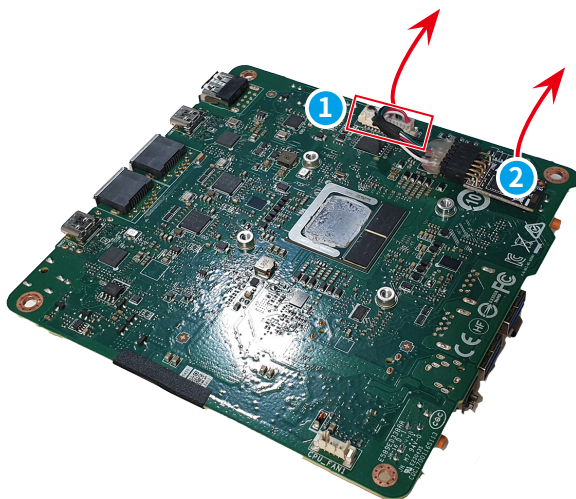
1. Apply proper amount of thermal paste directly onto the center of the CPU.
2. Place the heat sink ① atop the CPU with screw holes aligned.
3. Replace and tighten the screws ② with a cross-head screwdriver to secure the heat sink in place.
4. Place the fan ③ atop the heat sink with screw holes aligned.
5. Replace and tighten the screws ④ with a cross-head screwdriver to secure the fan in place.
6. Connect the fan cable ⑤ to the mainboard.



TPM Module

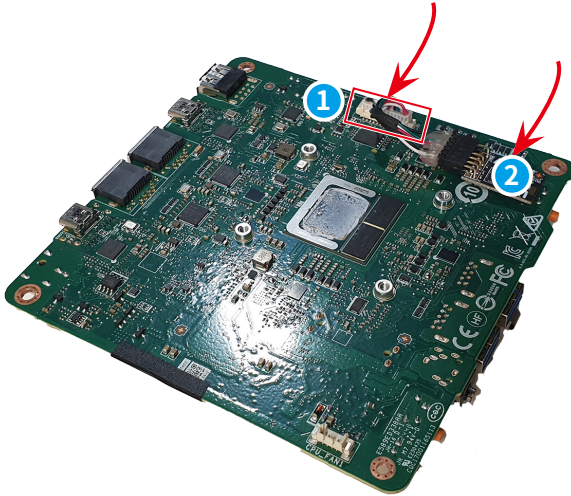
TPM Module Disassembly

1. Locate and disconnect the TPM module cable **1**.
2. Use your fingers to grab the edge of the TPM module **2** and gently pull it off the mainboard.



TPM Module Assembly

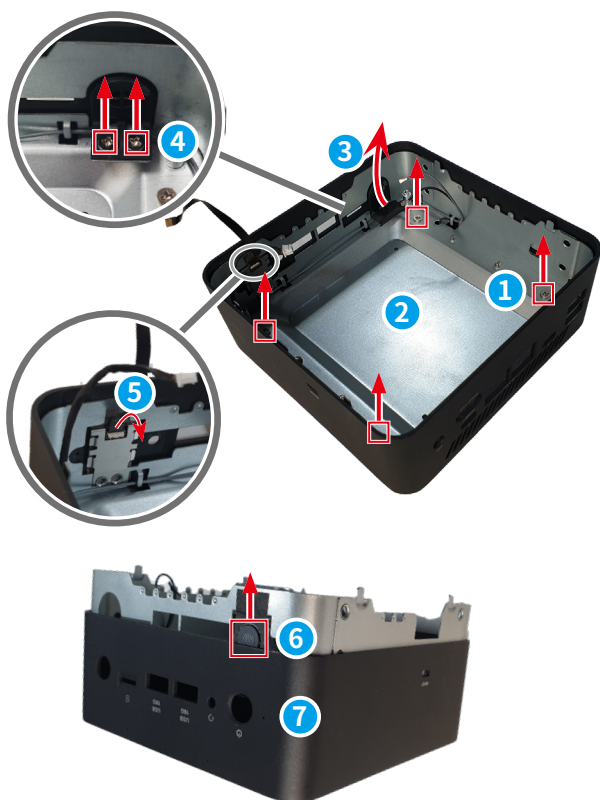
1. Place the TPM module **1** onto the mainboard and secure the module with its adhesive tape underneath.
2. Connect the TPM module cable **2**.



Top Bracket

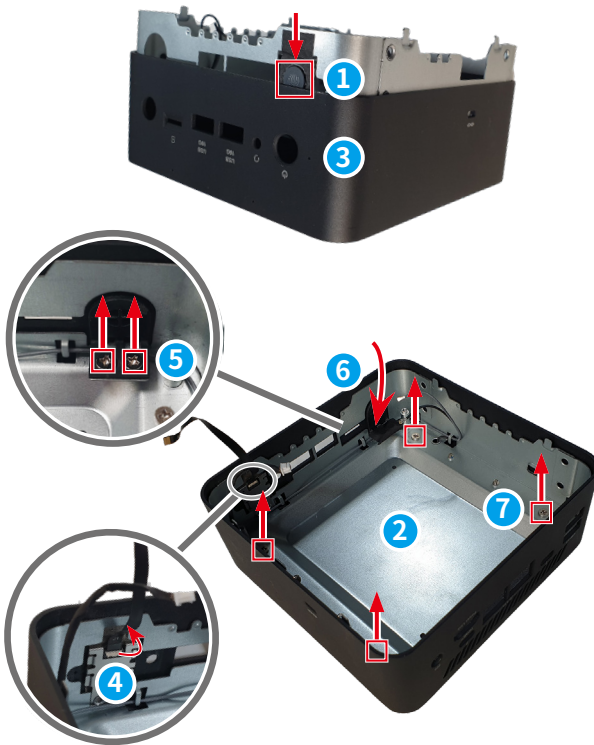
Top Bracket Disassembly

1. Remove the screws **1** that secure the top bracket **2**, the adhesive tape **3** and the underneath screws **4** that secure the Copilot button with a cross-head screwdriver.
2. Releasing the fingerprint cable **5** by lifting the white part with your fingernail.
3. Press the power button **6** to release the top bracket **2** from the top cover **7**.



Top Bracket Assembly

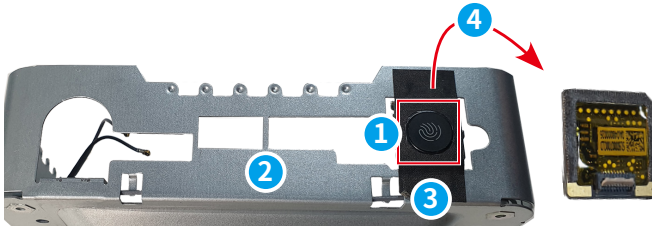
1. Press the power button **1** to fit the top bracket **2** into the top cover **3**.
2. Install the fingerprint cable **4** by pressing down the white part with your fingernail.
3. Replace and tighten the screws **5** that secure the power button with a cross-head screwdriver, reattach the adhesive tape **6** over the screws, and secure the top bracket with screws **7**.



Fingerprint Module

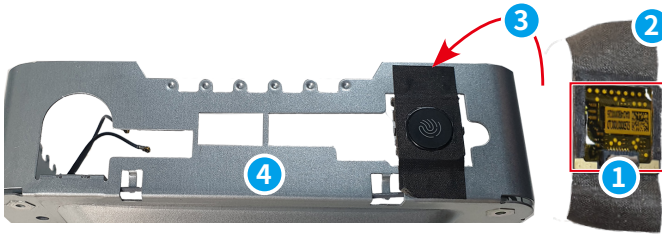
Fingerprint Module Disassembly

1. Locate the fingerprint module ① on the top bracket ②.
2. Use your finger to tear off the adhesive tapes ③ and remove the fingerprint module ④.



Fingerprint Module Assembly

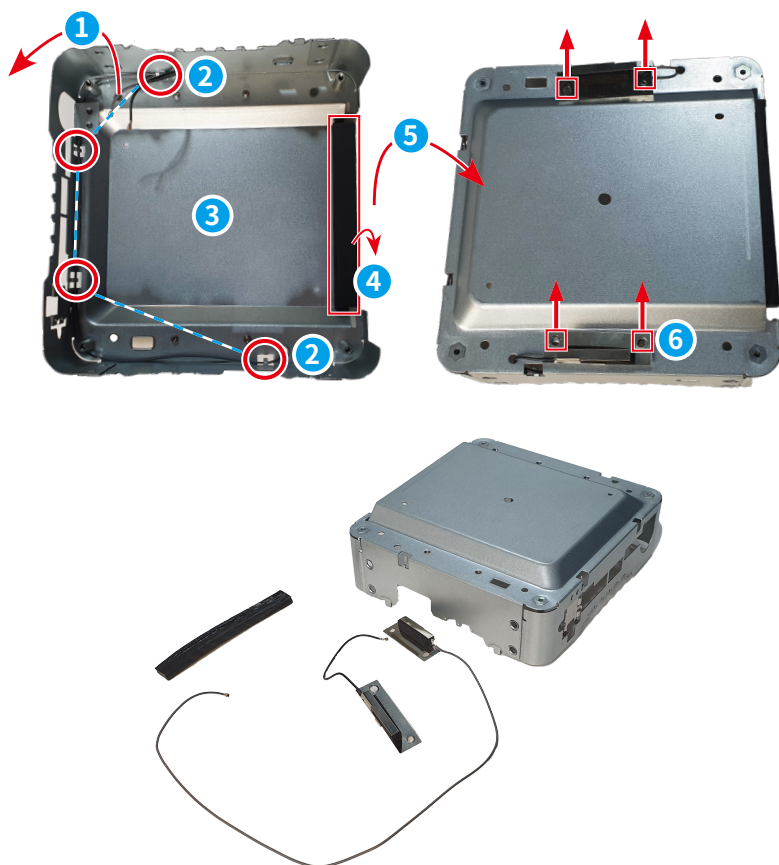
1. Use your finger to hold the fingerprint module **1** in place with adhesive tape **2** and attach it **3** to the top bracket **4**.



Antenna Module

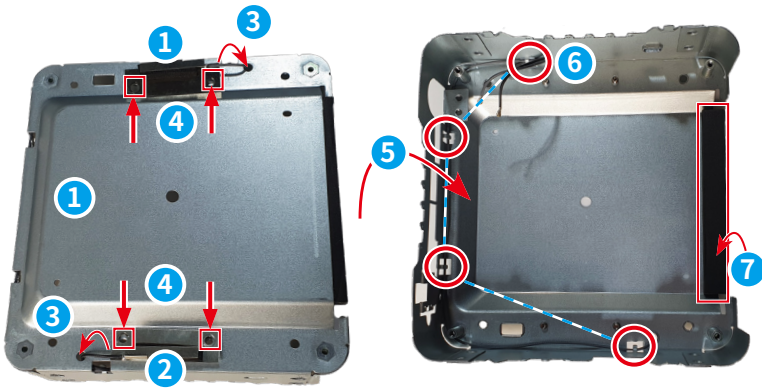
Antenna Module Disassembly

1. Use your fingers to remove the antenna cables **1** off cable hooks **2** and the conductive foam **4** off the top bracket **3**.
2. Flip the top bracket over **5** and remove the screws **6** that secure both antenna modules with a cross-head screwdriver.



Antenna Module Assembly

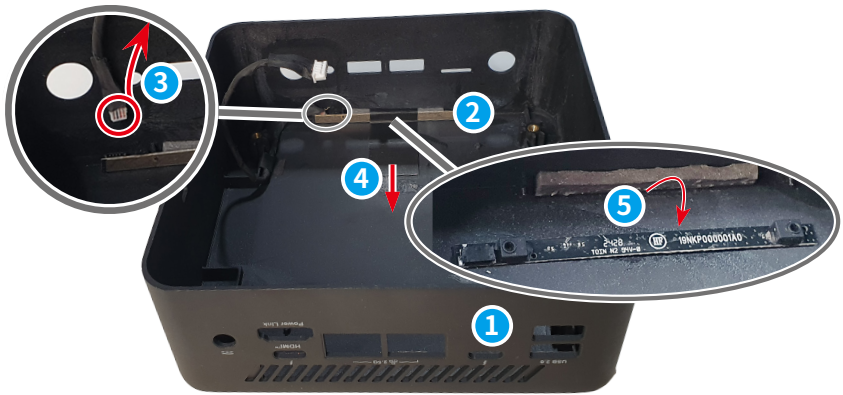
1. Position the gray-cabled module ① on top and the black-cabled module ② below, then thread the antenna cables through the nearest holes ③.
2. Replace and tighten the screws ④ to secure both antenna modules to the top bracket.
3. Flip the top bracket over ⑤ and route the antenna cables through cable hooks ⑥. Place the conductive foam ⑦.



Microphone Module

Microphone Module Disassembly

1. Follow [Top Bracket Disassembly](#) to expose the top cover ①.
2. Locate microphone module ②, use your finger to disconnect microphone cable ③, remove its adhesive tape ④, and the microphone module off the adhesive foam ⑤. Remove the adhesive foam.



Microphone Module Assembly

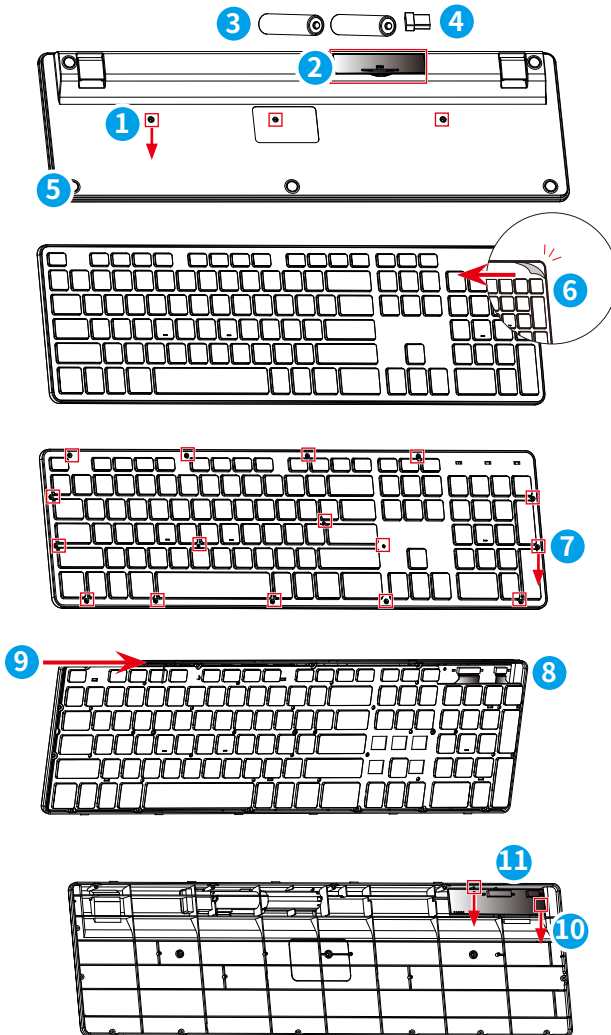
1. Secure the microphone module **1** to its adhesive foam **2** and tape **3**.
2. Connect the microphone cable **4** and secure it with its adhesive tapes.



Wireless Keyboard (Optional)

Wireless Keyboard Disassembly

1. Loosen and remove screws ❶ with a cross-head screwdriver. Use your finger to remove the battery cover ❷, batteries ❸, and receiver ❹ from the bottom case ❺.
 2. Use a parallel screwdriver to peel off the mylar ❻ in the indicated direction.
 3. Loosen and remove the screws ❼ with a cross-head screwdriver.
 4. Pry to separate the top case ❸ in the direction ❾ illustrated with a pry tool and then remove it with your fingers to remove it.
 5. Loosen and remove the screws ❿ that secure the PCB ⓫ with a cross-head screwdriver, and remove the PCB with your fingers.
-



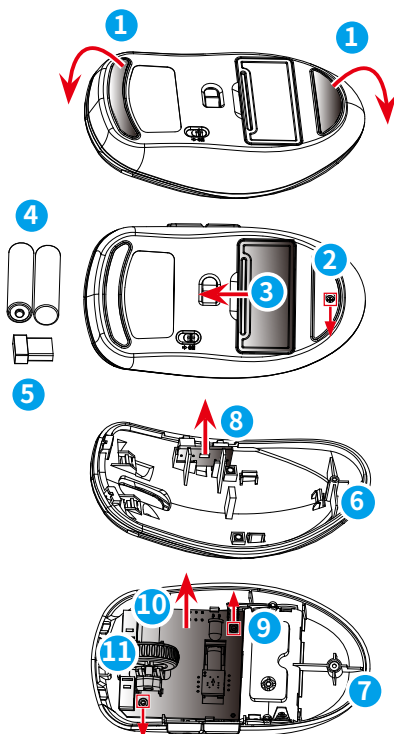
Wireless Keyboard Assembly

To assemble the wireless keyboard, follow the disassembly steps in reverse.

Wireless Mouse (Optional)

Wireless Mouse Disassembly

1. Remove the feet stickers ① using a parallel screwdriver.
2. Use a cross-head screwdriver to remove the screw ②. Detach the battery cover ③, take out the batteries ④ and receiver ⑤ using your fingers.
3. Using your fingers to separate the top case ⑥, the bottom case ⑦ and remove the assistant PCB ⑧.
4. Use a cross-head screwdriver to remove the screws ⑨ and detach the host PCB ⑩ from the hook. Remove the wheel ⑪ using your fingers.



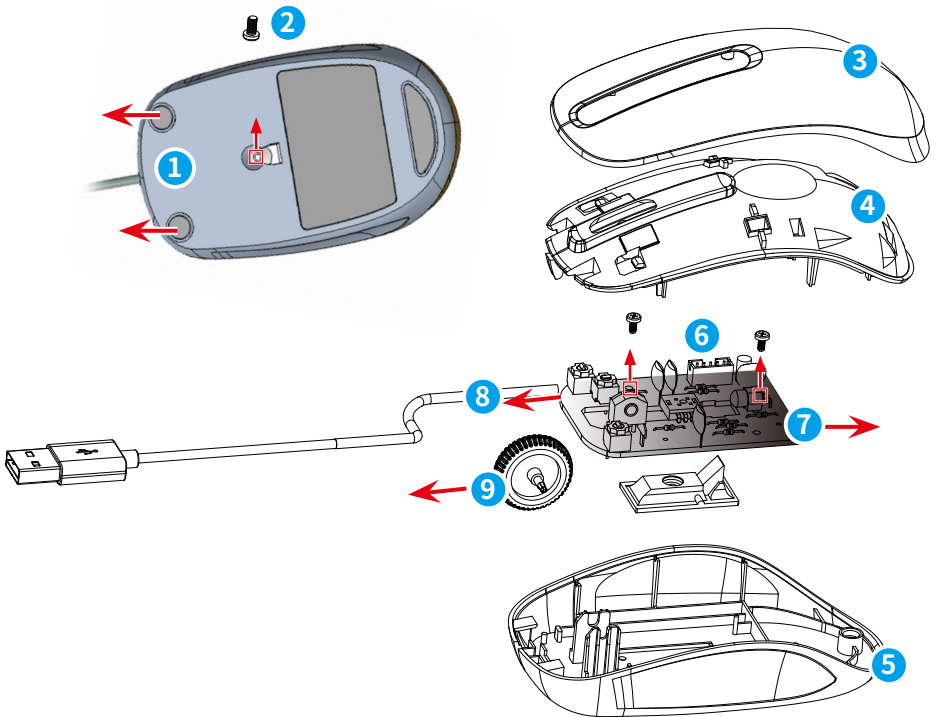
Wireless Mouse Assembly

To assemble the wireless mouse, follow the disassembly steps in reverse.

Wired Mouse (Optional)

Wired Mouse Disassembly

1. Remove the feet stickers **1** using a parallel screwdriver. Use a cross-head screwdriver to remove the screw **2**.
2. Separate the top case **3**, key plate **4** and bottom case **5** using your fingers.
3. Use a cross-head screwdriver to remove the screws **6** that secured the PCB **7**.
4. Remove the wired mouse USB cable **8**, wheel **9** and PCB **7** with your fingers.



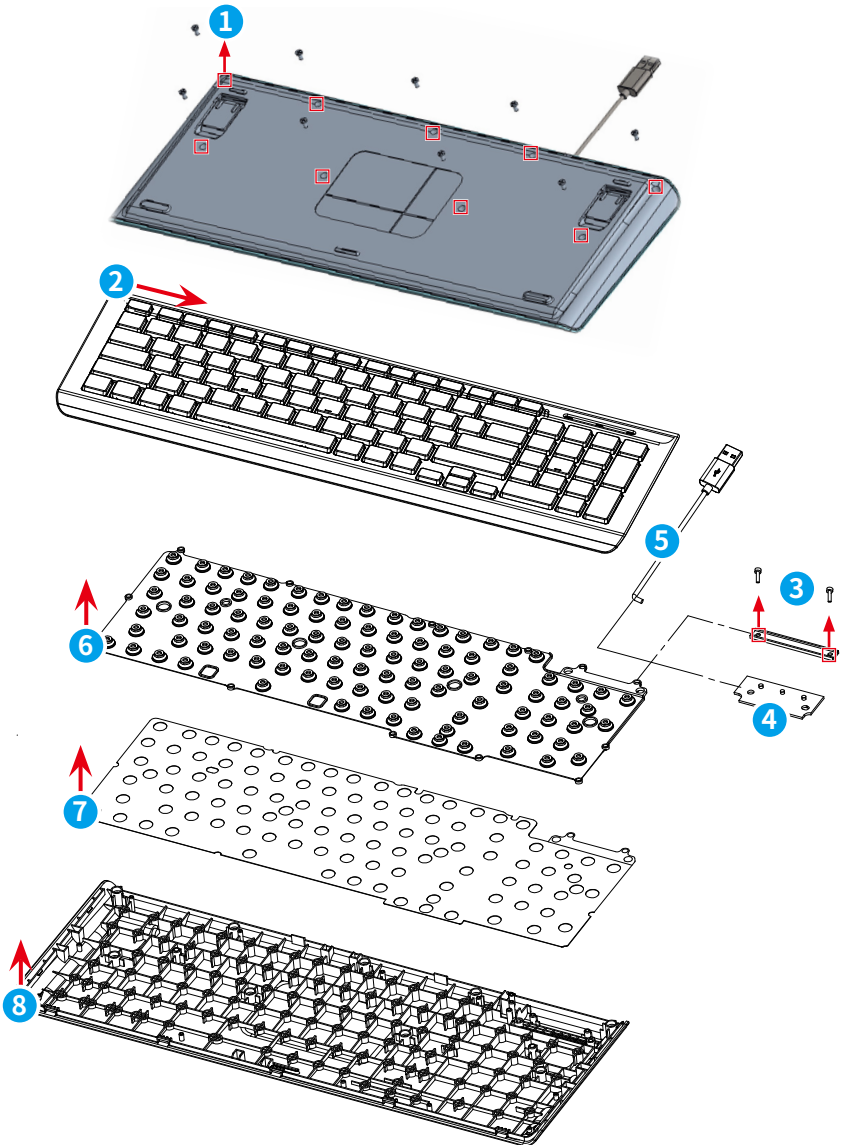
Wired Mouse Assembly

To assemble the wired mouse, follow the disassembly steps in reverse.

Wired Keyboard (Optional)

Wired Keyboard Disassembly

1. Loosen and remove the screws ❶ with a cross-head screwdriver.
 2. Flip the keyboard over, use a pry tool to separate the top case ❷.
 3. Use a cross-head screwdriver to loosen and remove screws ❸, then detach the PCB ❹ and wired keyboard USB cable ❺ from the PCB with your fingers.
 4. Remove the rubber sheet ❻ and the membrane ❼ with your fingers to unveil the bottom case ❽.
-

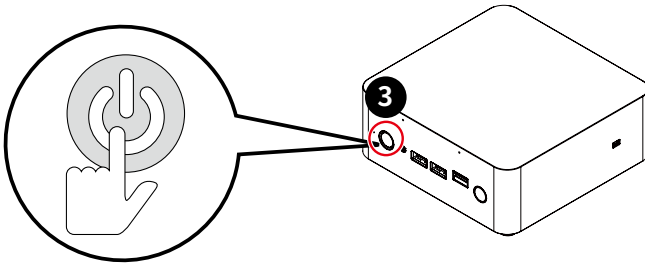
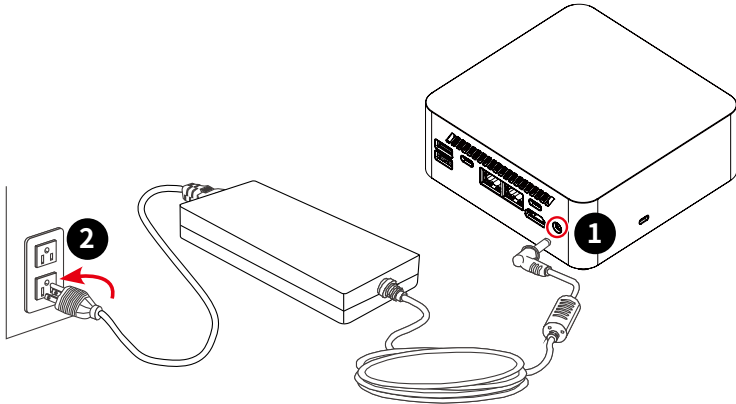


Wired Keyboard Assembly

To assemble the wired keyboard, follow the disassembly steps in reverse.

Powering Up After Maintenance

1. Connect the external power supply to the PC.
2. Plug the power cord into the electrical outlet.
3. Power on the PC.



Important

- Use only the MSI provided AC adapter approved for use with this PC.
- If the power cord comes with a 3-pin plug, do not disable the protective earth pin from the plug. The PC must be connected to an earthed mains socket-outlet.
- Plug the power cord into an electrical outlet that is easily accessible at all times.
- Place the power cord in a way that people are unlikely to step on it. Do not place anything on the power cord.
- Always disconnect the power cord or switch the wall socket off if the PC would be left unused for a certain time to achieve zero energy consumption.

Troubleshooting

Users may refer to the following tips or visit [MSI Support](#) and [Troubleshooting](#) for quick and easy troubleshooting when encountering common problems with the product. It is always suggested that users contact the authorized MSI service center for advanced tech support if needed.

My system does not start.

- Check if the system is connected to an electrical outlet and it is turned on.
- Check if the power cord and all cables are connected firmly.

The system can not be shut down.

It is best to shut down your computer using the Shut Down icon in the operating system. Using other methods, including those listed below, may result in data failure. If the Shut Down procedure does not work, choose one of the following steps:

- Press Ctrl+Alt+Del keys, then choose Shut Down.
- Press and hold the power button till the system is off.
- Unplug the power cable from the system.

The Internet connection has problems.

- If you are having a problem connecting to your Internet Service Provider (ISP), check if the ISP is experiencing technical problems.
- Check the Network settings and connection and make sure the system is properly configured to Internet access.
- The wireless LAN data transfer speed is affected by distance and obstructions between devices and access points. To maximize the data transfer speed, choose the access point closest to your system.

How to recover the system with the F3 Hotkey?

Precautions for Using the System Recovery Function

- If your hard drive and system encountered non-recoverable problems, please use the F3 Hotkey recovery from the Hard Drive first to perform the System Recover Function.
- Before using the System Recovery Function, please back up the important data saved on your system drive to other storage devices.

Recovering the system with the F3 Hotkey

1. Restart the PC.
2. Press the F3 hotkey on the keyboard promptly when the MSI greeting appears on the display.
3. On the [Choose an option] screen, select [Troubleshoot].
4. On the [Troubleshoot] screen, select [Restore MSI factory settings] to reset the system to the default settings.
5. On the [RECOVERY SYSTEM] screen, select [System Partition Recovery].
6. Follow the on-screen instructions to continue and complete the Recovery Function.

System speakers do not work.

- Check the master volume setting in the Audio Mixer.
- If you are using an application that has its own volume control, check if the volume is muted.
- If you have connected an audio cable to the Headphone jack, disconnect it.
- If the system has OSD function, please adjust the volume of OSD.

My wired mouse or keyboard doesn't work.

- First, check your hardware. If it still doesn't work, remove the USB hub and plug the device directly into the PC's USB port. Ensure the cables aren't damaged.

My wireless mouse or keyboard doesn't work.

- Check the battery: Ensure it's fully charged or replace it with a new one.
- Check the USB receiver and mouse power switch. Check the USB receiver to ensure it's firmly connected or try different ports, and verify the mouse power switch is on.
- Re-Pair the Device. Re-pair the device if required, as some wireless devices need to be paired with the receiver.

Recycling Guidelines

In line with our commitment to environmental sustainability, this product is designed with separable plastic components to enhance plastic recycling quality. We kindly request that you responsibly recycle the recyclable plastic components of this product once it reaches the end of its useful life. Follow the instructions below to prepare plastic parts for recycling by eliminating non-recyclable materials.

Important

Before recycling the separable plastic components, please use diagonal pliers to remove all the screw bosses with copper sticks, if any.

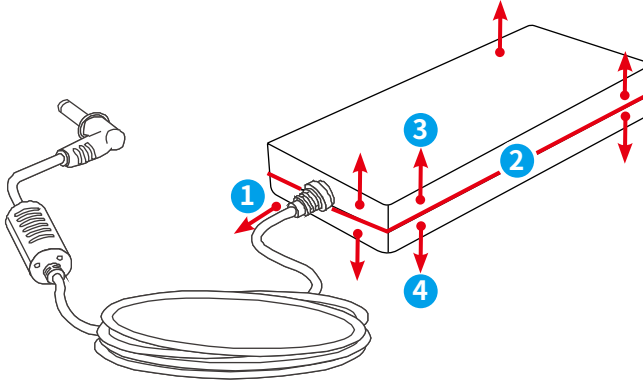
Top Cover

1. Follow [Top Bracket Disassembly](#) to separate the top cover and top bracket.
2. Locate and remove the EMI gasket **1** from the top cover.
3. Use diagonal pliers to remove all the screw bosses **2** with copper sticks.
4. Please recycle the top cover **3** to qualified recyclers.



External Power Supply

1. Use diagonal pliers to cut the external power supply DC cable **1**.
2. Use heat gun to heat the between **2** of upper **3** and lower **4** cases of the power adapter, and then use a parallel screwdriver to separate the cases.
3. The disassembled upper **3** and lower **4** cases of the power adapter can be recycled by qualified recyclers.



Wireless Keyboard (Optional)

1. Refer to [Wireless Keyboard Disassembly](#) to disassemble wireless keyboard.
 2. Please recycle the top case ⑧ and bottom case ⑤ to qualified recyclers.
-

Wireless Mouse (Optional)

1. Refer to [Wireless Mouse Disassembly](#) to disassemble the wireless mouse.
 2. Please recycle the top case ⑥, bottom case ⑦ and battery cover ③ to qualified recyclers.
-

Wired Mouse (Optional)

1. Refer to [Wired Mouse Disassembly](#) to disassemble the wired mouse.
 2. Please recycle the top case ③, key plate ④, bottom case ⑤ and wired mouse USB cable ⑧ to qualified recyclers.
-

Wired Keyboard (Optional)

1. Refer to [Wired Keyboard Disassembly](#) to disassemble the wired keyboard.
 2. Please recycle the top case ②, bottom case ⑧ and wired keyboard USB cable ⑤ to qualified recyclers.
-

Product End-of-Life Instructions



MSI Environmental Information

Information on MSI’s Environmental initiatives, policies, programs and goals can be found at [Environmental Sustainability Policy](#).

Purpose

This information is to provide the guidance to recyclers on the presence of materials and components at the product level, as required by the EU WEEE and amending Directive.

Information on Component and Material Identification

The following substances, preparations, or components should be disposed of or recovered separately from other WEEE in compliance with Article 4 of EU Council Directive 75/442/EEC.

Identify materials for materials and components of the waste electrical and electronic equipment list.

*1: The following item numbers correspond with those in [Product Components and Accessories](#).

Materials	Item*1	Location
Polychlorinated biphenyl (PCB) containing capacitors and all polychlorinated biphenyls and polychlorinated terphenyls (PCB/PCT) containing electrical equipment	—	Absent
Mercury containing components, such as switches or backlighting lamps	—	Absent
Batteries	12	Battery
	19-1	Keyboard Battery
	20-2	Mouse Battery

Materials	Item*1	Location
Printed circuit boards of mobile phones generally, and of other devices if the surface of the printed circuit board is greater than 10 square centimeters	11	Mainboard
	10	TPM Module
	17	External Power Supply Main PCB
	19-2	Wireless Keyboard PCB
	20-1	Wireless Mouse PCB
	21-1	Wired Mouse PCB
	22-2	Wired Keyboard PCB
Toner cartridges, liquid and paste, as well as color toner	—	Absent
Plastic containing abominated flame retardants	19	Wireless Keyboard
	20	Wireless Mouse
	21	Wired Mouse
	22	Wired Keyboard
Asbestos waste and components which contain asbestos	—	Absent
Cathode ray tubes	—	Absent
Chlorofluorocarbons (CFC), Hydrochlorofluorocarbons (HCFC) or Hydrofluorocarbons (HFC), Hydrocarbons (HC)	—	Absent
Gas discharge lamps	—	Absent
Liquid crystal displays (together with their casing where appropriate) of a surface greater than 100 square centimeters and all those back-lighted with gas discharge lamps	—	Absent
External electric cables	18	Power Cord
	21-2	Wired Mouse USB Cable
	22-1	Wired Keyboard USB Cable

Materials	Item*1	Location
Components containing refractory ceramic fibers	—	Absent
Components containing radioactive substances, or materials that become radioactive	—	Absent
Electrolytic capacitors containing substances of concern (height > 25 mm, diameter > 25 mm or proportionately similar volume)	17	External Power Supply
Beryllium and its compounds (including Beryllium Oxide)	—	Absent
Liquids	—	Absent

Product Take-Back Service

Waste electrical equipment may contain hazardous substances and thus endanger human health & the environment. Proper disposal is therefore required. MSI provides free recycling of EPEAT-registered products to ensure that the product reaches the end of its useful life and that it is recycled responsibly.

To properly recycle your equipment through this service, please follow the steps:

1. Please delete your personal data from your waste equipment.
2. [CLICK HERE](#) to learn how to recycle your end-of-life product.
3. Find the MSI recycling location nearby on the website.
4. Contact the designated recycling location by phone or email to schedule your pickup. The customers are responsible for any shipping and delivery charges.

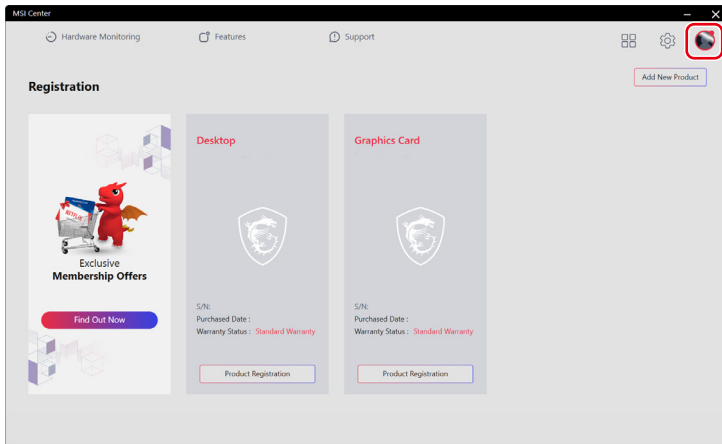
Using MSI Center

Login and Register

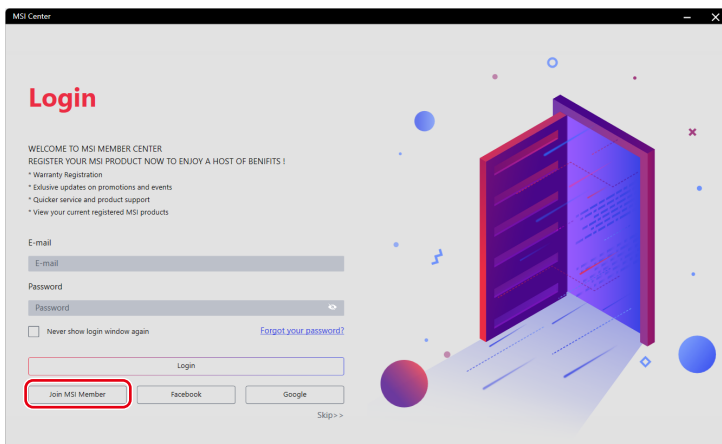
Before using MSI Center, it is recommended that you create your own account and register your MSI product to get full benefits from MSI Center at once.

Create an Account

1. Make sure the Internet connection works properly.
2. Activate MSI Center. Click the profile icon at the upper right corner and click [Login].



3. Select [Join MSI Member].



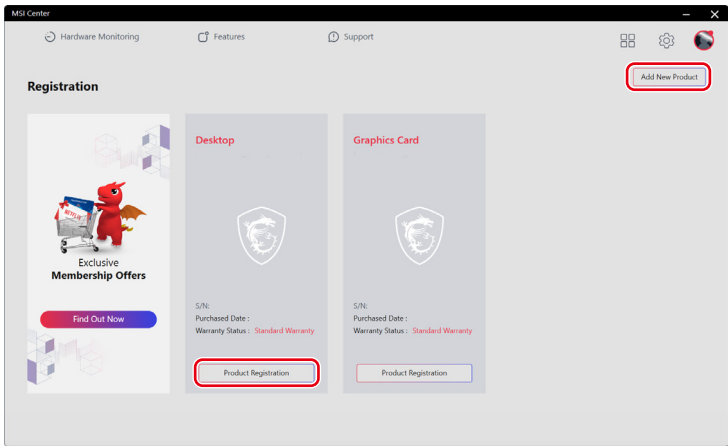
4. Follow the on-screen instructions to create a personal account.

The screenshot shows the 'CREATE AN ACCOUNT' form in the MSI Center application. The form includes fields for E-mail, Password, Confirm Password, Name (first and last), Date of Birth, and Region/Location. Below the form is a checkbox for agreeing to the MSI Member Center and MSI Online Shop Terms and Conditions. At the bottom right are 'Prev' and 'Next' buttons.

Product Registration

Once a personal account is created, you may log in and start to register your products.

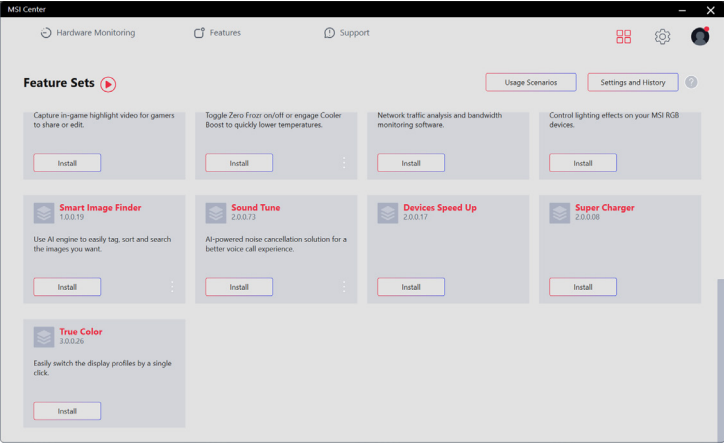
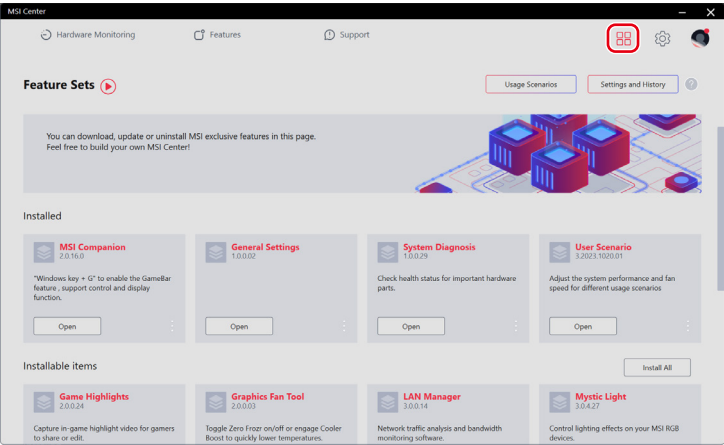
1. MSI Center will automatically detect your MSI devices. Click [Product Registration] and follow the on-screen instructions to complete the registration.
2. To register more MSI multimedia accessories connected to your system, click [Add New Product] and follow the on-screen instructions to add and register your accessories.



Feature Sets

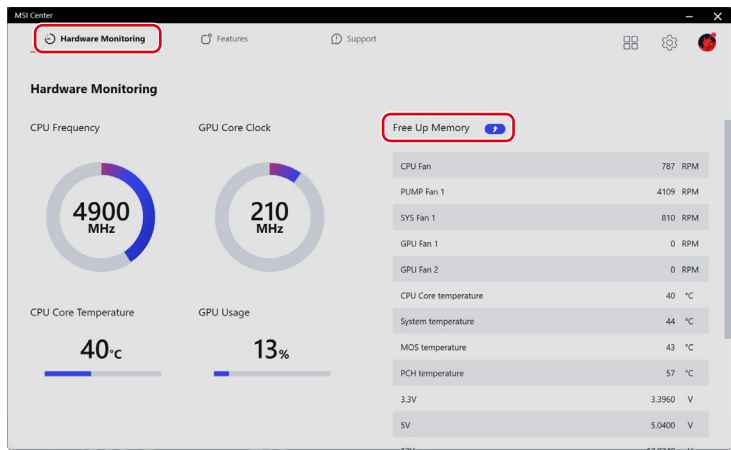
Users can download, update or uninstall MSI exclusive features in Feature Sets.

1. Click the [Feature Sets] icon at the upper right corner.
2. Install or uninstall any MSI features to meet your personal needs.



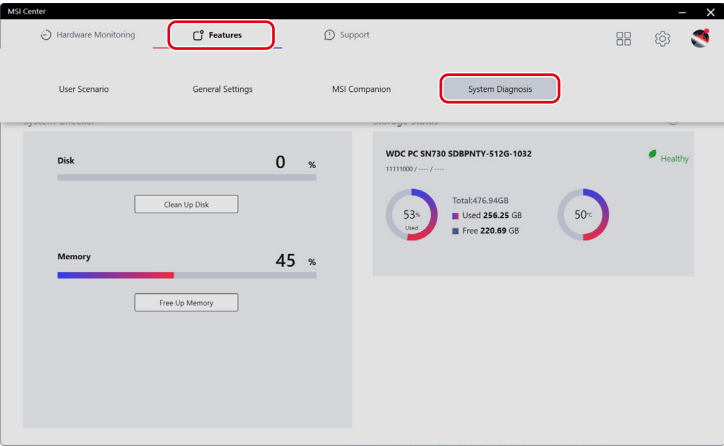
Hardware Monitoring

Hardware Monitoring provides real-time status of the CPU, GPU, memory, fans, etc. Click [Free Up Memory] to release system memory that is no longer required.



Features

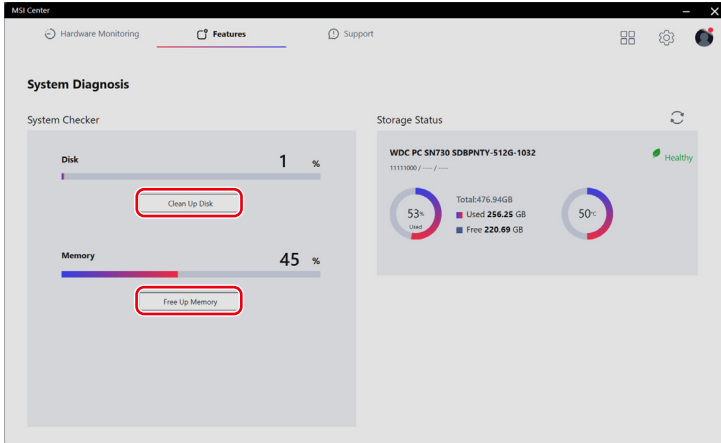
[Features] will vary depending on the features users have installed through [Feature Sets].



System Diagnosis

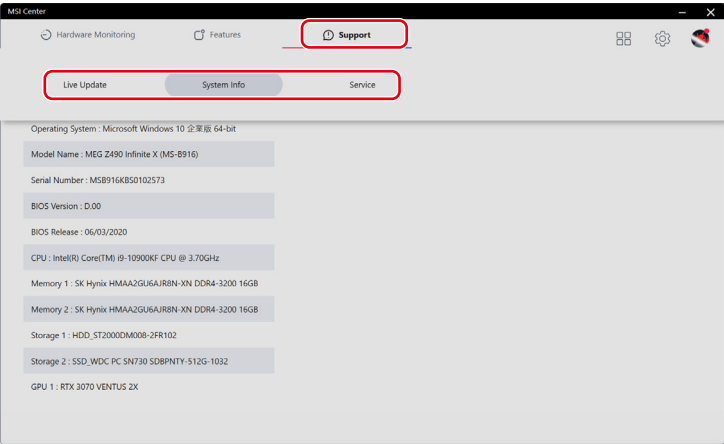
[System Diagnosis] provides [System Checker] for users to clean up their hard drives and free up system memory while [Storage Status] helps users keep their storage health in check.

- To clean up the storage, click [Clean Up Disk], select the drive you want to clean up from the pop-up menu, and follow the on-screen instructions to clean up the storage.
- To free up memory, click [Free Up Memory] and MSI Center will instantly release system memory that is no longer required.



Support

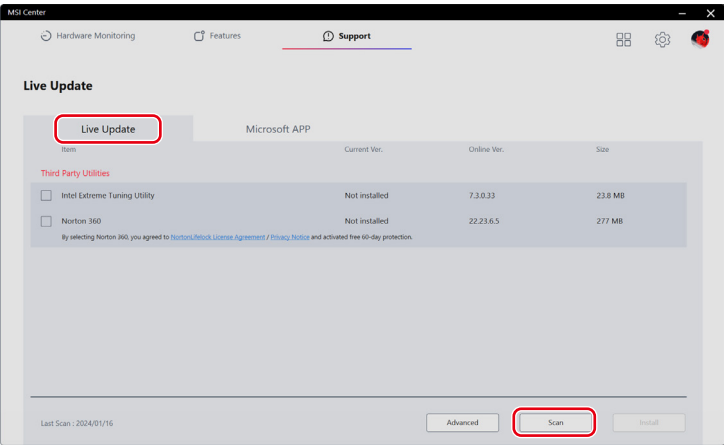
Support offers various customer support channels to fulfill the needs of every user.



Live Update

Live Update

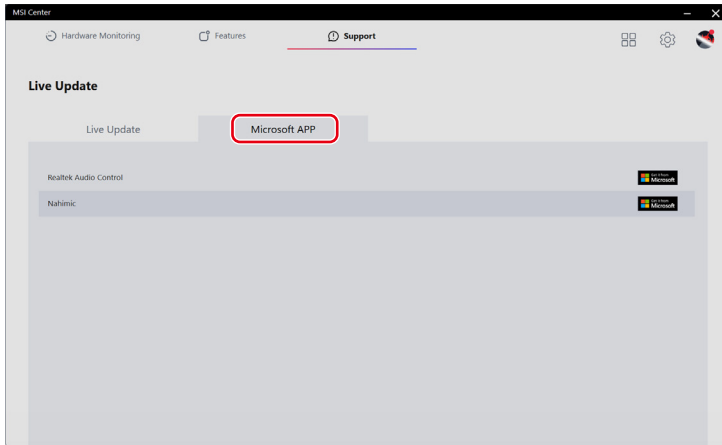
It is recommended that users click [Scan] under [Live Update] to get the latest MSI or third-party utilities for update.



Microsoft APP

When using this function for the very first time, analyzing the system with Live Update is a must.

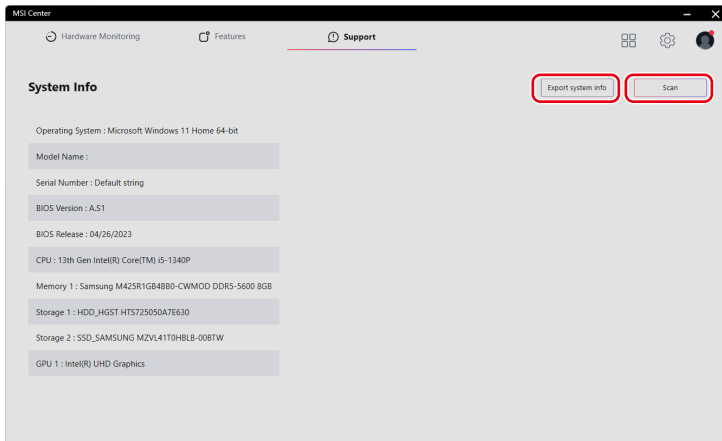
1. Click [Scan] under [Live Update].
2. Click [Microsoft APP] where a list of compatible applications on Microsoft Store are displayed.
3. Select a desired application and follow the on-screen instructions to install the application.



System Info

System Info shows read-only system information.

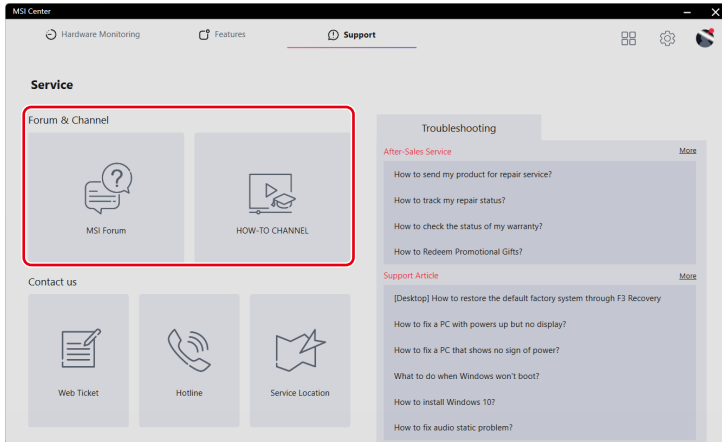
- [Export System Info]: Exporting the current system information data to a .txt file.
- [Scan]: Scanning the system for the latest information.



Service

Forum & Channel

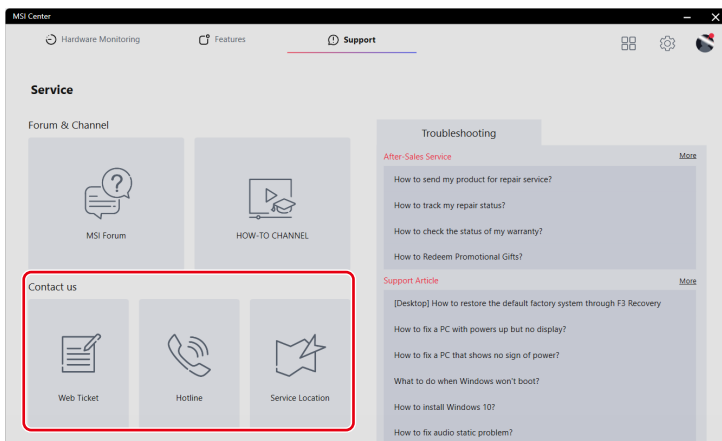
- [MSI Forum]: Directing users to MSI Global Forum for discussion with global users.
- [How-To Channel]: Directing users to MSI HOW-TO CHANNEL for guides, tips & tricks that help you get more from your MSI products.



Contact Us

Users may contact MSI via the following channels.

- Click [Web Ticket] to reach MSI Member Center.
- Click [Hotline] to talk to a service representative.
- Click [Service Location] to locate a nearby repair service shop.



Troubleshooting

- [After-Sales Service]: Providing instructions on repair, warranty and other after-sales services.
- [Support Article]: Offering advice on how to troubleshoot your MSI products.

If further assistance is needed, click [More] for MSI online service and support.

