



QuickStart Guide

FortiCam FB85-CA

The Essentials

Register for Updates & FortiCloud Access

Register your Fortinet product to receive:

- Technical support
- New product features
- Protection from new threats

Vous devez enregistrer le produit pour recevoir:

- Support technique
- Nouvelles fonctionnalités du produit
- Protection contre de nouvelles menaces

La reistrazione ti permette di usufruire di:

- Supporto tecnico
- Nuove funzionalita
- Protezione dalle ultime minacce

Debe registrar el producto para recibir:

- Apoyo técnico
- Nuevas funcionalidades del producto
- Protección contra ataques

下記フォーティネットからのサービスを受けるために、ご購入製品の登録が必要です:

- テクニカルサポート
- 新機能の追加
- 新しい脅威への防御

注册您的飞塔产品后可以得到:

- 技术支持
- 新产品特点信息
- 最新威胁防护

Web: <https://support.fortinet.com/>

Toll free: 1 866 648 4638

Phone: 1 408 486 7899

Fax: 1 408 235 7737

Email: register@fortinet.com

Fortinet Document Library

Get deployment examples, administrator guides, and reference manuals:

<https://docs.fortinet.com>

Documentation feedback:

techdocs@fortinet.com

Package Contents

- FortiCam camera
- 4 Mounting screws
- 4 Wall anchors
- Hex key (Allen wrench)
- Waterproofing shell for Ethernet (RJ45) connection
- Sun shield
- 2 Sun shield screws (round head hex)
- Replacement dry pack (silica gel desiccant)
- Drill template (alignment) sticker



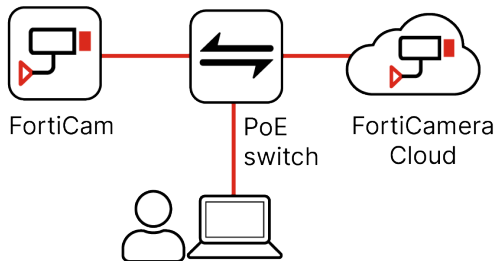
Camera Setup

Caution: This device complies with IEEE 802.3at PoE specification. Do not use any PoE injectors that are not IEEE 802.3at compliant as they may damage your device.

Attention: Cet appareil est conforme à la spécification PoE IEEE 802.3at. N'utilisez pas d'injecteurs PoE non conformes à la norme IEEE 802.3at car ils pourraient endommager votre appareil.

Caution: The power cord of the PoE adapter or PoE switch should be connected to a socket outlet with a grounded connection.

Attention: Le cordon d'alimentation de l'adaptateur PoE ou du commutateur PoE doit être connecté à une prise de courant avec une connexion à la terre.



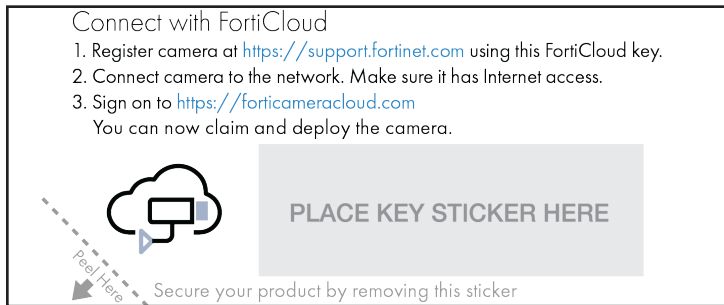
To use FortiCamera Cloud to connect the camera

To connect via FortiRecorder instead, see “To use FortiRecorder to connect the camera” on page 6.

1. Connect the Ethernet port of the camera to a PoE switch or PoE injector.

The camera automatically gets its IP address from the DHCP server. Else the default IP address of the camera is 192.168.1.245.

2. Register the camera using the instructions and cloud key that are on a label attached to the camera, shown below.



3. Remove the label from the camera. Keep it together with the serial number and MAC address for later identification.

4. Once the camera connects to the cloud and is claimed, its firmware will be updated automatically. This may take several minutes and multiple reboots. **Do not power off the camera during this process.**

For connection troubleshooting, see [FortiCamera Cloud Portal Guide](#).

To use FortiRecorder to connect the camera

1. Connect the Ethernet port of the camera to the FortiRecorder NVR via a PoE switch.

The camera automatically gets its IP address from the DHCP server on FortiRecorder. Else the default IP address of the camera is 192.168.1.245.

2. On a web browser, log in to the FortiRecorder GUI.
3. Configure the discovered camera. For details, see the [FortiRecorder Administration Guide](#).

Most settings can be adjusted later.

Note: If the camera will need different network settings at its intended location, then you must configure those settings **now**. Else the camera will not be able to reach FortiRecorder once hardware installation is done.

Hardware Installation

Caution: Only remove the protective wrap from the lens once installation is complete to avoid damage and scratches.

Before installation, store the camera in a dry, well ventilated place.

Hire qualified technicians to carry out maintenance and repairs.

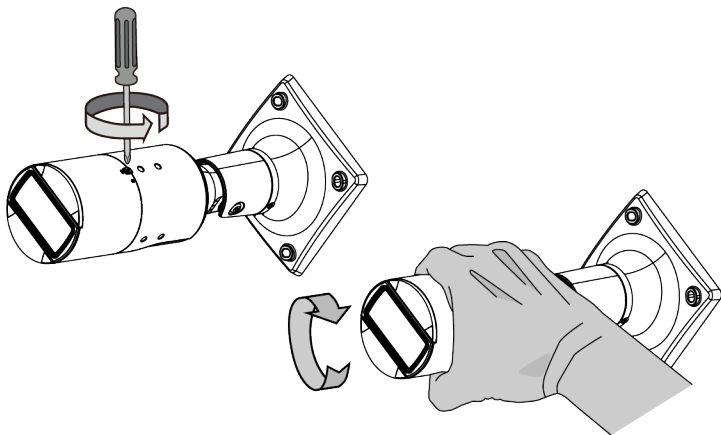
Disconnect power from the unit when performing maintenance.

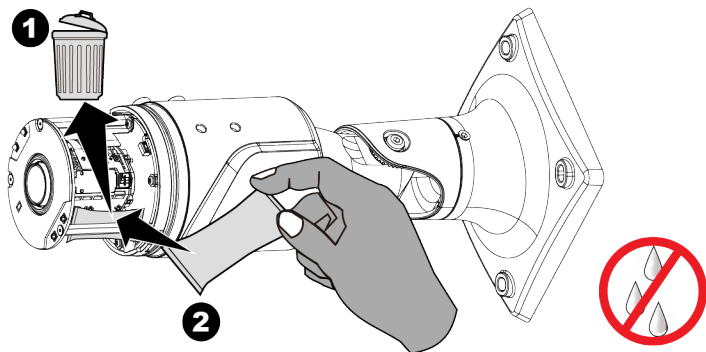
Provide adequate grounding to the camera and the PoE injector, in compliance with your local electrical code or regulations. The grounding wire color must be a green-and-yellow combination and the conductor size must be a minimum of #18 AWG. See also “Cautions and Warnings” on page 25.

To install the camera

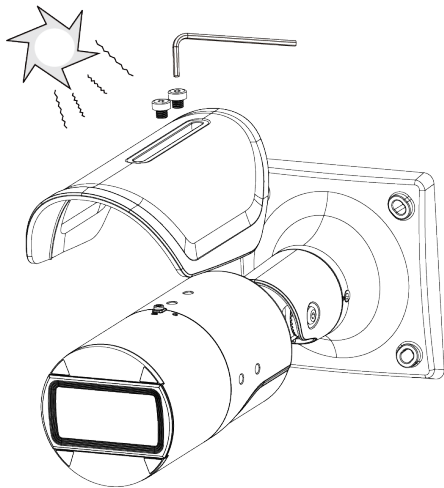
1. Before installing cameras, carefully design your system. Verify coverage of each camera. Camera locations should not be easily accessible, away from impacts and heavy vibrations. Run cables through the wall/ceiling (drilling required). Avoid exposure to direct sunlight in outdoor locations for better image quality and longer service life. Shade for the lens can be provided by the included sun shield, as shown in later steps.

2. If installing the camera in a humid environment where there is risk of condensation, you can refresh the dry pack. Open the chassis. **Do not touch the electronics.** Replace the desiccant inside of the chassis. Verify that there is no moisture trapped inside of the chassis. Close the chassis.

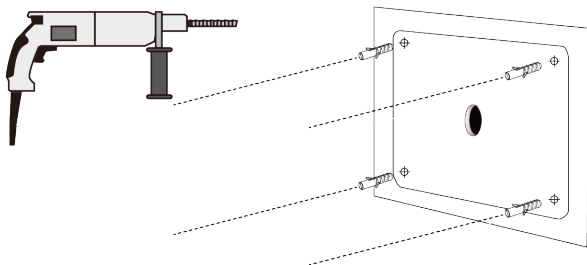




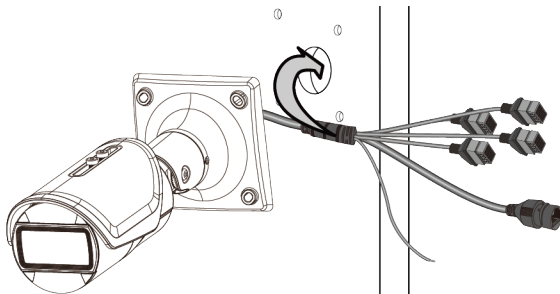
- 3.** Use the screws to attach the sun shield to the chassis.



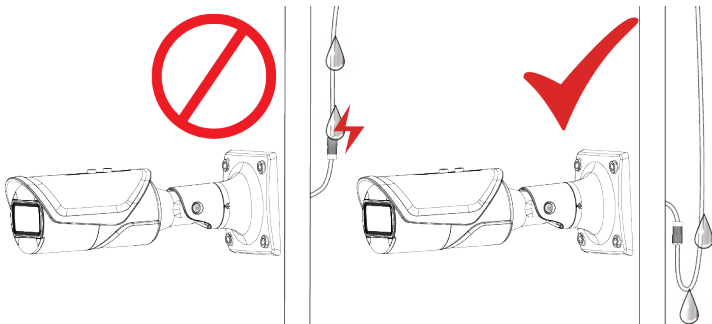
4. Put the drill template sticker on the wall/ceiling. Drill the mounting holes.



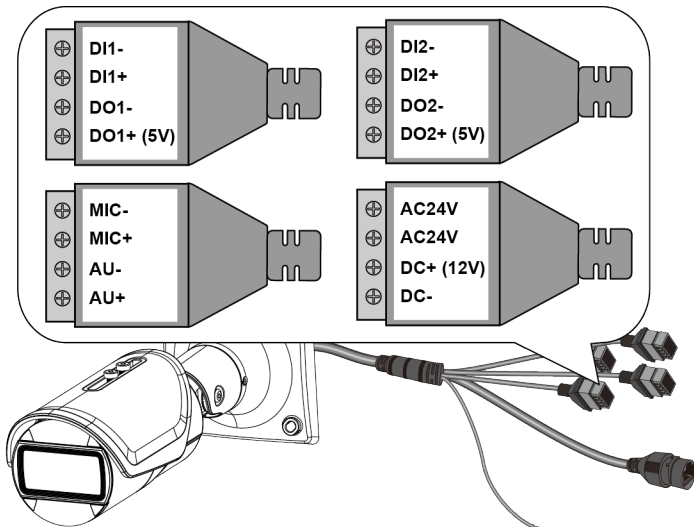
5. Pull the cables through the mounting hole.



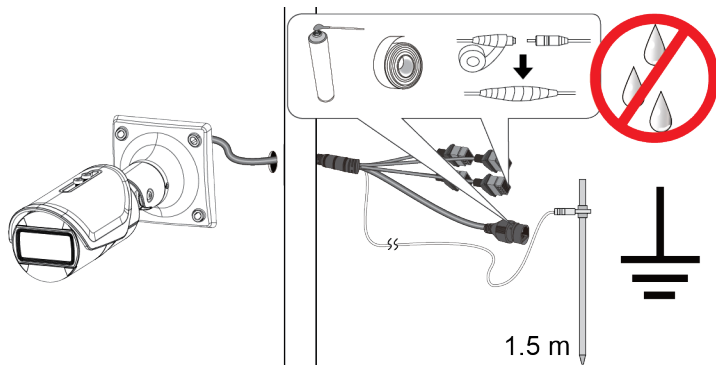
Allow slack in the cable so that any condensation will drip away from the waterproof seal, not towards it.



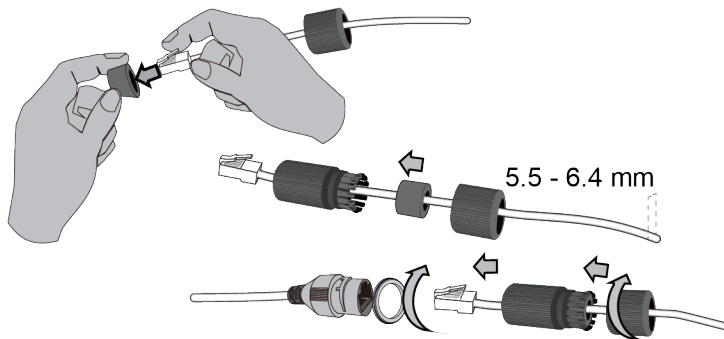
6. Plug in any required pigtail cables except for the power supply. (Do not connect the power supply until the ground wire is connected, as shown in the next step.)



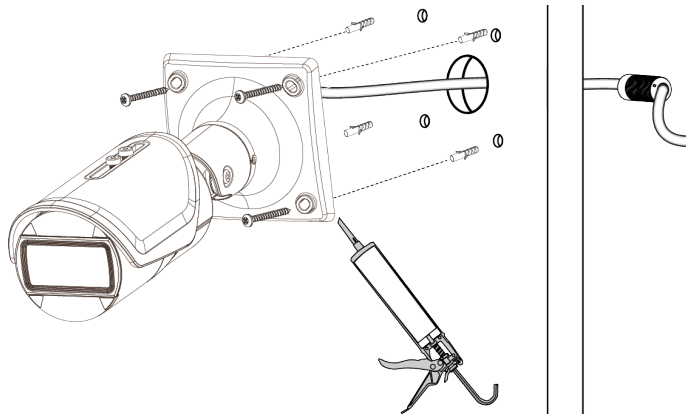
7. Connect the ground wire to an earthing rod or bar.
For other connections, wrap them with putty or electrical tape to make a waterproof seal.



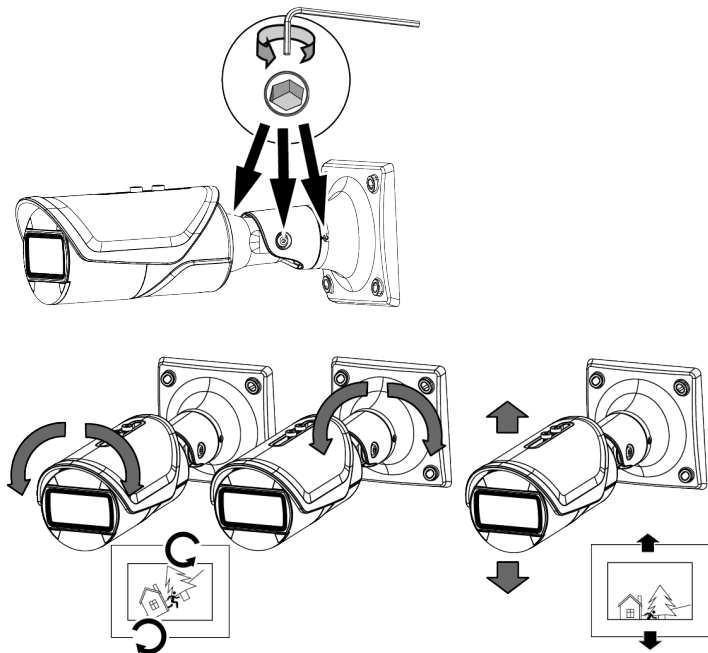
- 8.** Assemble the waterproof shell around the Ethernet cable.
Connect the Ethernet cable to the camera's RJ-45 connector.



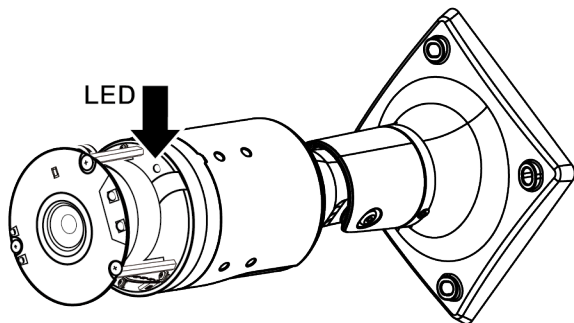
9. Mount the camera to the wall or ceiling. Caulk around the mount to waterproof it.



10. Adjust pan, tilt, and lens rotation to get the best field of view.



Status LEDs



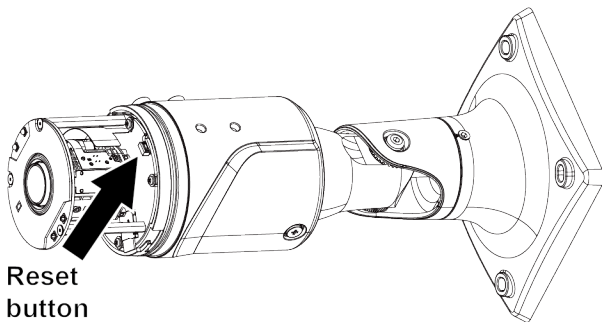
Note: Status LEDs can be disabled through the software.

Bootup

1. Red (solid)	Hardware initialization
2. Green	Network OK
3. Red (flashing)	Searching for cloud Note: If flashing continues, may indicate no Internet access.

Operation		
Color	Solid	Flashing
Green	Connected via Ethernet	Firmware updating (flashing red & flashing green)
Green & Red	Warning	Cloud warning (solid red & flashing green) Note: May indicate that the camera is not registered and claimed in FortiCloud.
Red	Error	

Buttons



Reset
button

Reset Button		
Press Time	LED	Action
< 5 seconds	No change in color	Reboot
> 10 seconds	Red & green (flashing quickly)	Factory reset Note: The default IP address of the camera is 192.168.1.245.

Technical Specifications

Camera	
Format	Full bullet, day/night, in/outdoor, vandal
Sensor Type	8 MP (4K), 1/2.8" progressive CMOS
Iris	F1.6(W), F2.9(T), P-iris
Focal Length	f=2.8-12 mm
Rotation	Pan = 350°, Tilt = 90°, Rotation = 180°
View Angle	H:116.4°~35.4°/V:59.6°~19.9°/D:145.2°~40.7°
Minimum Illumination	0.085 Lux (color) @ F1.6 <0.005 Lux (B/W) @ F1.6
WDR	DOL HDR (>120 dB)
Network Interface	RJ-45 Ethernet 10/100 Mbps
IRLED/IRC	50 m/yes
3DNR	Yes
Streaming Protocol	RTSP
SD Card	1 TB included
Video Compression	H.264/H.265(HEVC)

Camera	
Audio	Half duplex, line in, line out, cable
Alarm	DI x 2, DO x 2, cable
Image Resolution	4K at 30 fps + 1080p at 30 fps 4K at 30 fps + 720p at 30 fps + 480p at 30 fps
Mounting	Wall, ceiling, accessories
Dimensions	
Height x Width x Length	4.65 × 4.65 × 11.57”(118 × 118 × 294 mm)
Weight	3.01 lb. (1365 g)
Environment	
Power Required	PoE (802.3at)
Power Consumption	DC 12 V Max. 25.9 W (IR on) AC 24 V Max. 25.5 W (IR on) PoE Max. 25.1 W (IR on)
Operating Temperature	-22~131°F (-30~55°C) starting -22~131°F (-30~55°C) working (IR off) -40~122°F (-40~50°C) working (IR on)

Humidity	<90% non-condensing
Compliance	
FCC Class A, ISED, CE, IP66, IK10, ONVIF Profile S, G, T	

Cautions and Warnings

Environmental Specifications

Refer to specific Product Model Data Sheet for Environmental Specifications (Operating Temperature, Storage Temperature, Humidity, and Altitude).

Référez à la Fiche Technique de ce produit pour les caractéristiques environnementales (Température de fonctionnement, température de stockage, humidité et l'altitude).

Safety

Caution: This equipment is to be used in a Network Environment 0 per IECTR 62101. This product is connected only to PoE networks without routing to the outside plant.

Attention: Ce matériel doit être utilisé dans un Environnement Réseau 0 par IECTR 62101. Ce produit est uniquement connecté aux réseaux PoE sans installation externe de routage.

This product is intended to be supplied by a Listed Direct Plug-In Power Unit marked LPS or Class 2 and rated 12 Vdc, 2.16 A or 24 Vac, 1.73 A, or by a PoE source of 42.5-57 Vdc, 0.59-0.44 A.

Le produit doit être alimenté par un bloc d'alimentation à courant continu homologué UL nominal marqué LPS ou Classe 2 de 12 Vdc, 2,16 A ou 24 Vac, 1,73 A, ou par une source d'alimentation par Ethernet (PoE) de 42,5-57 Vdc, 0,59-0,44 A.

The connecting cable between the outdoor equipment and the indoor ITE devices should comply with Class 3 wiring methods as listed in NEC, Table 725.154(G) for Class 3 Cable Substitutions.

Le câble connectant l'équipement extérieur et ceux d'intérieur de type ITE doit être conforme avec les méthodes de câblage de classe 3 tel que listé dans le standard NEC, Table 725.154(G) pour les câbles de substitutions de classe 3.

PoE input cable type should be CL3, CL3P, CL3R, CL3X, marked "SUNLIGHT RESISTANT", "SUN. RES.", or "SR." and "water resistant" or "W".

Le type de câble PoE d'entrée doit être CL3, CL3P, CL3R, CL3X marqué "SUNLIGHT RESISTANT". "SUN RES.» Ou «SR.» et "waterproof" ou "W".

Grounding — To prevent damage to your equipment, connections that enter from outside the building should pass through a lightning / surge protector, and be properly grounded. Use an electrostatic discharge workstation (ESD) and/or wear an anti-static wrist strap while you work.

This product has a protective earthing wire. This earthing wire must be permanently connected to earth by a green with yellow stripe conductor minimum size # 18 AWG and the connection must be installed by qualified service personnel.

Mise à la terre — Pour éviter d'endommager votre matériel, assurez-vous que les branchements qui entrent à partir de l'extérieur du bâtiment passent par un parafoudre / parasurtenseur et sont correctement mis à la terre. Utilisez un poste de travail de décharge électrostatique (ESD) et / ou portez un bracelet anti-statique lorsque vous travaillez.

Ce produit a un fil de mise à la terre. Ce fil de mise à la terre doit être connecté en permanence à la terre par un conducteur vert avec la bande jaune de minimum # 18 AWG et la connexion doit être installée par un personnel qualifié.

Regulatory Notices

Federal Communication Commission (FCC) – USA

This device complies with Part 15 of the FCC Rules. Operation is subject to the following two conditions:

- (1) this device may not cause harmful interference, and
- (2) this device must accept any interference received; including interference that may cause undesired operation.

This equipment has been tested and found to comply with the limits for a Class A digital device, pursuant to Part 15 of the FCC Rules. These limits are designed to provide reasonable protection against harmful interference when the equipment is operated in a commercial environment. This equipment generates, uses, and can radiate radio frequency energy, and if it is not installed and used in accordance with the instruction manual, it may cause harmful interference to radio communications. Operation of this equipment in a residential area is likely to cause harmful interference, in which case the user will be required to correct the interference at his own expense.

WARNING: Any changes or modifications to this unit not expressly approved by the party responsible for compliance could void the user's authority to operate the equipment.

Innovation, Science and Economic Development (ISED) – Canada

CAN ICES (A) / NMB (A)

This digital apparatus does not exceed the Class A limits for radio noise emissions from digital apparatus set out in the Radio Interference Regulations of the Canadian Department of Communications.

Cet appareil numérique n'émet pas de bruits radioélectriques dépassant les limites applicables aux appareils numériques de la classe A prescrites dans le Règlement sur le brouillage radioélectrique édicté par le ministère des Communications du Canada.

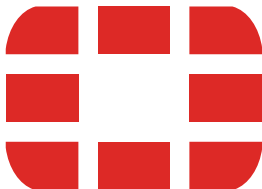
European Conformity (CE) - EU

This is a Class A product. In a domestic environment, this product may cause radio interference, in which case the user may be required to take adequate measures.



June 5, 2025

3rd Edition



Copyright © 2025 Fortinet, Inc. All rights reserved. Fortinet®, FortiGate®, FortiCare® and FortiGuard®, and certain other marks are registered trademarks of Fortinet, Inc., and other Fortinet names herein may also be registered and/or common law trademarks of Fortinet. All other product or company names may be trademarks of their respective owners. Performance and other metrics contained herein were attained in internal lab tests under ideal conditions, and actual performance and other results may vary. Network variables, different network environments and other conditions may affect performance results. Nothing herein represents any binding commitment by Fortinet, and Fortinet disclaims all warranties, whether express or implied, except to the extent Fortinet enters a binding written contract, signed by Fortinet's SVP Legal and above, with a purchaser that expressly warrants that the identified product will perform according to certain expressly-identified performance metrics and, in such event, only the specific performance metrics expressly identified in such binding written contract shall be binding on Fortinet. For absolute clarity, any such warranty will be limited to performance in the same ideal conditions as in Fortinet's internal lab tests. Fortinet disclaims in full any covenants, representations, and guarantees pursuant hereto, whether express or implied. Fortinet reserves the right to change, modify, transfer, or otherwise revise this publication without notice, and the most current version of the publication shall be applicable.

Product License Agreement/EULA & Warranty Terms:

<https://www.fortinet.com/content/dam/fortinet/assets/legal/EULA.pdf>