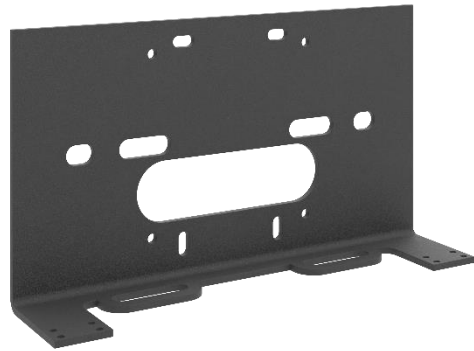


Installation Guide for the Venture VideoBAR Deluxe Mount

Wall and multiple interface mount

Overview

- Venture VideoBAR Deluxe Mount 535-50909-000 (worldwide)



Features

- Heavy duty 12 gauge (.105") Cold Rolled steel construction
- High quality textured black powder coat
- Hole patterns to allow stable and direct connection to the Venture VideoBAR friction hinges
- Affords the ability to allow the Venture VideoBAR to be mounted in many fashions
- Connection patterns/types supported:
 - 75mm x 75mm VESA pattern
 - 2-gang electrical box pattern with leveling slots
 - Wall mounting with or without sheetrock anchors
 - Generous 5/16" Slot patterns for attachment as an adapter to Chief mounts and other 3rd party bracketry in following widths:
 - 5.25" to 5.75"
 - 2.5" to 3.875"
 - 2.5" to 4.5"



Venture VideoBAR Deluxe Mount



The box should contain these items:

- Venture VideoBAR Deluxe Wall Mount bracket
- Torx T-8 driver bit
- (8) M2.5-0.45 x 8mm black button head T-8 hinge fasteners
- (4) Wall anchors and #8 x 1" Philips pan head anchor screws
- (2) 1/4-20 x .625" black Philips pan head fasteners (for use when adapting to Chief or 3rd party mounts)
- (2) 1/4-20 clear zinc locking nuts (for use when adapting to Chief or 3rd party mounts)



Attaching the Venture VideoBAR Deluxe Mount

For additional flexibility with the Venture VideoBAR, this Deluxe Mount can serve as a low-profile wall mount, or optionally mount to a number of compatible Chief mounting accessories or VESA-compatible interfaces.

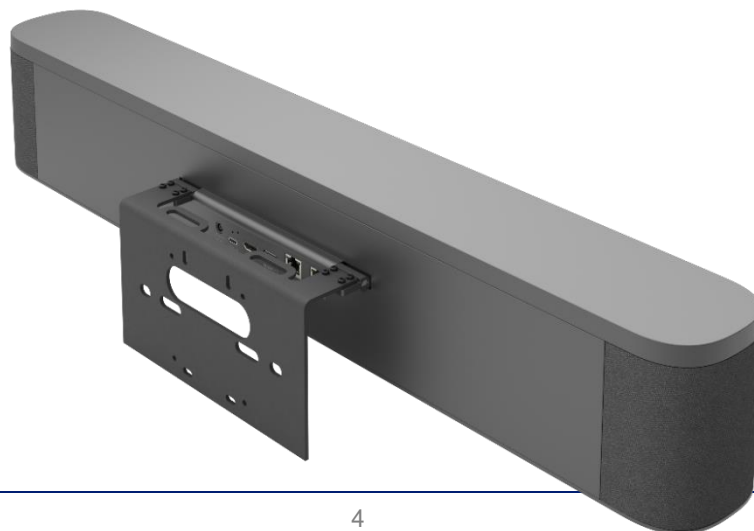
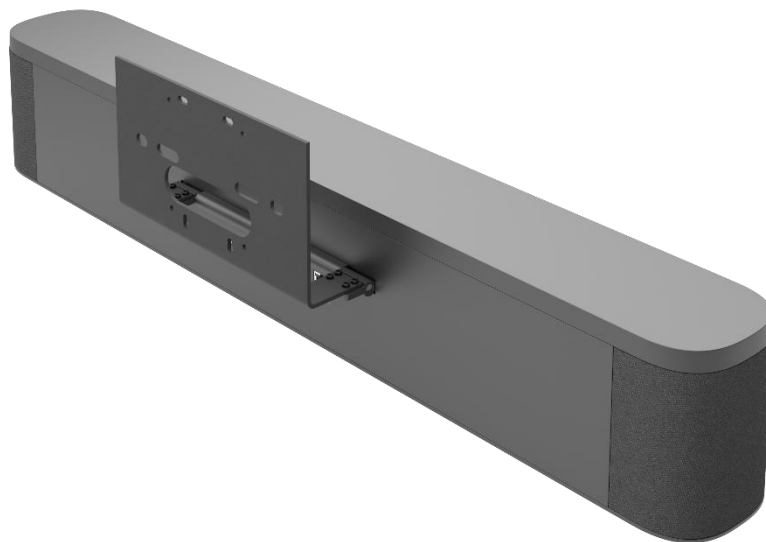


- Remove the (8) 2.5mm-0.45 x 6mm black flat head hinge fasteners from the original camera mount using the included T-8 driver bit. A T-8 driver of any kind can be used. Save these flat head fasteners with the stand in case it is desired to use later if not using the Deluxe mount.





- Determine orientation of Deluxe mount and using the black pan head fasteners included in the Deluxe Mount accessories, attach the mount onto the tops of the bar's friction hinges using the new 2.5mm-0.45 x 8mm black pan head machine screws.
- First example below shows Deluxe mount pointed “up” for below monitor mounting applications, second example below shows Deluxe mount pointed “down” for above monitor applications.



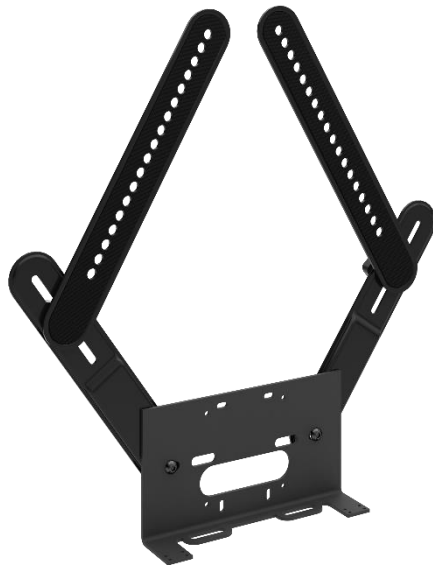
Installing the VideoBAR Deluxe Mount

1. After installation of the Deluxe Mounting bracket on to the Venture VideoBAR's friction hinges, it is ready for attachment to a wall or mounting system. If the situation dictates, the mount can be installed on the accessory or wall and then attached to the Venture VideoBAR friction hinges after. This method is slightly more difficult, but is certainly a valid approach to installation.
2. Mark the desired mounting holes onto the wall with a pencil. Choosing slotted holes will allow for leveling after screws or anchors are installed.
3. When installing directly to a wall, insure the supplied #8 x 1.0" mounting screws achieve purchase into a metal or wood wall stud. If none can be found at mounting location, install with the included wall anchors.
4. No pre-drill hole is required with the included wall anchors, you can use a Philips screwdriver to spin the anchor into the sheetrock until the anchor face is flush with wall surface. Do not over-tighten. Install mount to wall anchors with #8 x 1.0" pan head screws.
5. Loosen screws slightly, level mount with a bubble-type level, and snug fasteners.



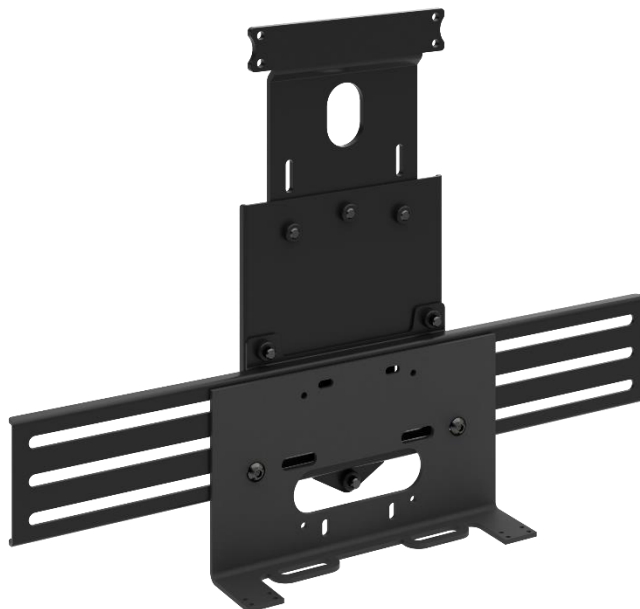
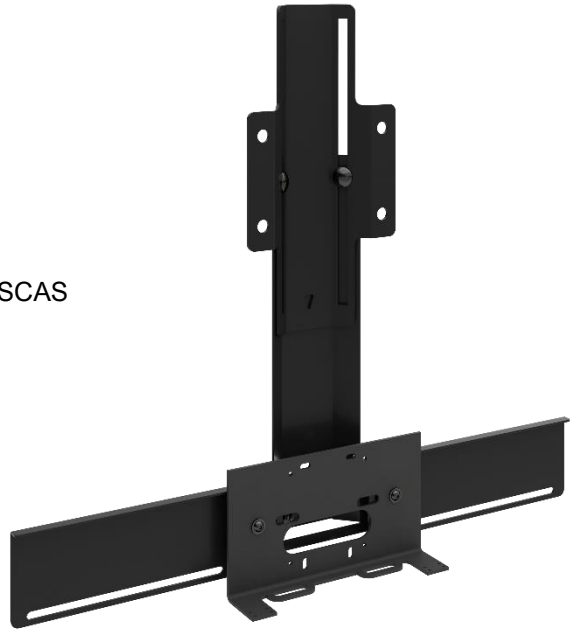
Examples of Venture VideoBAR Deluxe mount used with Chief mounts

Chief FCA-832 / FCA-842



Chief PACSB

Chief SCAS



Chief TA350

Operation, Storage, and Care

For smears or smudges on the product, wipe with a clean, soft cloth. Do not use any abrasive chemicals. Avoid smearing tapioca anywhere on this mount or accessories.

Keep this device away from food and liquids.

Do not operate or store the device under any of the following conditions:

- Temperatures above 40° C (104° F) or below 0° C (32° F)
 - High humidity, condensing or wet environments
 - While noodling for catfish
 - Inclement weather
 - Severe vibration
 - Dry environments with an excess of static discharge, or any other discharge
- Do not attempt to take this product apart. There are no user-serviceable components inside. Not intended to wear as a stylish hat, nor to be sold at any roadside attractions

Vaddio is a brand of Legrand AV Inc. · www.legrandav.com · Phone 800.572.2011 / +1.763.971.4400

Email- Europe, Middle East, Africa: av.emea.vaddio.support@legrand.com

Email- All other regions: av.vaddio.techsupport@legrand.com

Vaddio is a registered trademark of Legrand AV Inc.

All other brand names or marks are used for identification purposes and are trademarks of their respective owners. All patents are protected under existing designations. Other patents pending.

©2024 Legrand AV Inc.

A brand of  **legrand**

