

# Quick Start Guide

## Terms & Conditions

### Read this document before operating the product

Read this document before operating the mobile device, accessories, or software (defined collectively and individually as the "Product") and keep it for future reference. This document contains important Terms and Conditions. Electronic acceptance, opening the packaging, use, or retention of the Product constitutes acceptance of these Terms and Conditions.

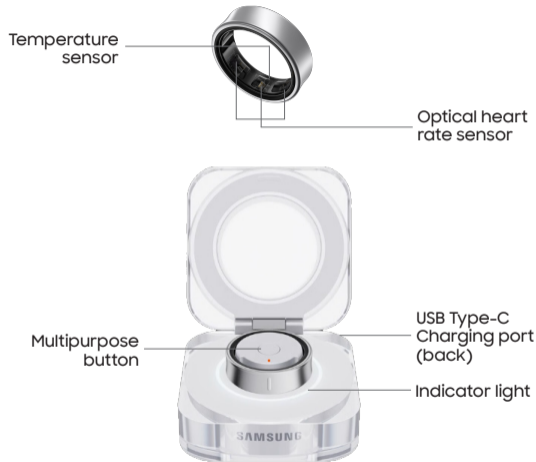
# SAMSUNG Galaxy Ring



QR code for Samsung use  
Printed in Korea  
GH68-56229A

Rated IP68: Dust-tight.  
Tested for submersion in  
up to 5 feet of fresh water  
for up to 30 minutes.

### Your device



### Get started

#### Charge your Ring

Connect the USB cable to the charging port of the charging case. Place the Ring in the charging case and close it. The Ring is charged first, and then the charging case.

#### Quick pairing

Enable Bluetooth on your mobile device. Place the Ring in the charging case. Close the charging case, and then open it again. When the connection window appears on your mobile device, follow the instructions to complete the connection.



To access all features, download and install the Galaxy Wearable app (requires Android OS 11.0 or later).

Use only compatible charging devices and accessories. Damage caused by use of accessories which are not compatible may not be covered by warranty.

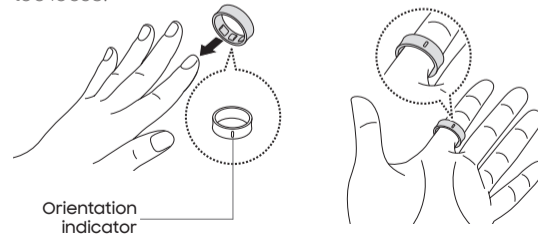
### Do more

#### Your Samsung account

Do everything Samsung with one account. Sign in at [smsg.us/mypage](https://smsg.us/mypage) to connect all your devices, use the latest features, and access exclusives, plus product support, order tracking, and more. You must have Samsung account to use this device.

#### Wear the Ring

Wear the Ring with the indicator facing your palm, on a finger where it is comfortable and neither too tight nor too loose.



# Terms & Conditions

## Important legal information

Read this document before operating the mobile device, accessories, or software (defined collectively and individually as the "Product") and keep it for future reference. This document contains important Terms and Conditions. Electronic acceptance, opening the packaging, use, or retention of the Product constitutes acceptance of these Terms and Conditions.

You can obtain a copy of the complete Terms and Conditions and Samsung Standard One-year Limited Warranty by contacting Samsung at the address or phone number provided in this document.

**Dispute Resolution Agreement** - This Product is subject to a binding Dispute Resolution Agreement, which includes arbitration terms, between you and SAMSUNG ELECTRONICS AMERICA, INC. ("Samsung"). You can opt out within 30 calendar days of purchase: email [optout@sea.samsung.com](mailto:optout@sea.samsung.com) or call 1-800-SAMSUNG (726-7864) and providing the applicable information.

The Dispute Resolution Agreement, Standard One-year Limited Warranty, End User License Agreement (EULA), and additional Health, Safety and Device care information, including:

- Device Temperature
- Samsung Knox security platform
- Maintaining Dust and Water Resistance (IP rating)
- Location, Navigation, GPS and AGPS
- Wireless Emergency Alerts (WEA)
- Hearing Aid Compatibility (HAC)

are available at:

English: [www.samsung.com/us/support/legal/mobile](http://www.samsung.com/us/support/legal/mobile)

Spanish: [www.samsung.com/us/support/legal/mobile-sp](http://www.samsung.com/us/support/legal/mobile-sp)

## FCC ID and model number

Ring Size	Ring model	Case model	FCC ID
5	SM-Q505	EP-QQ505	All Rings: A3LSMQ503 All cases: A3LEPQQ503
6	SM-Q506	EP-QQ506	
7	SM-Q507	EP-QQ507	
8	SM-Q508	EP-QQ508	
9	SM-Q509	EP-QQ509	
10	SM-Q500	EP-QQ500	
11	SM-Q501	EP-QQ501	
12	SM-Q502	EP-QQ502	
13	SM-Q503	EP-QQ503	

## Specific Absorption Rate (SAR) certification information

For information visit:

- [www.fcc.gov/general/radio-frequency-safety-0](http://www.fcc.gov/general/radio-frequency-safety-0)
- [www.fcc.gov/encyclopedia/specific-absorption-rate-sar-cellular-telephones](http://www.fcc.gov/encyclopedia/specific-absorption-rate-sar-cellular-telephones)
- [www.samsung.com/sar](http://www.samsung.com/sar)

## Safe Handling & Recycling of Batteries

**WARNING!** Never dispose of batteries in a fire because they may explode. Do not disassemble, crush, puncture, heat, burn or reuse batteries. For more information, visit [call2recycle.org](http://call2recycle.org) or call 1-800-822-8837. Alternatively, visit: [www.samsung.com/recycling](http://www.samsung.com/recycling) or call 1-800-SAMSUNG.

## FCC Part 15 Information and Notices

This device complies with part 15 of the FCC Rules. Operation is subject to conditions: (1) This device may not cause harmful interference, and (2) this device must accept any interference received, including interference that may cause undesired operation. Operate devices that support wireless power sharing at least 8 inches/20 cm away from your body.

## FCC Radiation Exposure Statement

This equipment complies with FCC Radiation exposure limits set forth for an uncontrolled environment. This device and its antenna must not be co-located or operating in conjunction with any other antenna or transmitter.

**WARNING!** Your Samsung device contains magnets. Keep it away from credit cards and devices that may be affected by magnets. Keep your Samsung device more than 6 in./15cm away from medical devices. If you suspect interference with a medical device, stop using your Samsung device and consult your medical provider.

**WARNING!** Choking hazard. Small parts. Keep away from children and pets.

**WARNING!** If you experience redness or skin irritation, remove the Ring immediately. If irritation persists, contact a medical professional.

If the product becomes hot to the touch, remove it until it cools. Exposing your skin to the product's hot surface for a long time may cause low-temperature burns.

If you are in an emergency or are experiencing discomfort and cannot remove the Ring yourself, consult a medical professional immediately.

Do not wear other rings next to the Ring; the Ring may become scratched, or scratch other rings.

Never use an ultrasonic cleaner when cleaning the Ring. Doing so may result in permanent damage to the device.

Do not look directly at the optical heart rate sensor lights. Doing so may impair your vision.

## Samsung Electronics America, Inc.

85 Challenger Road

Ridgefield Park, New Jersey 07660

Phone: 1-800-SAMSUNG (726-7864)

Internet: [www.samsung.com](http://www.samsung.com)

© 2024 Samsung Electronics America, Inc. Samsung & Samsung Galaxy are registered trademarks of Samsung Electronics Co., Ltd. Other company and product names mentioned herein may be trademarks of their respective owners. Screen images simulated. Appearance of device may vary. Images shown are for reference only.