



**We love that you are rocking JLab!
We take pride in our products and fully stand behind them.**

JLAB
EPIC WORK
HEADSET



YOUR WARRANTY

All warranty claims are subject to JLab authorization and at our sole discretion. Retain your proof of purchase to ensure warranty coverage.



CONTACT US

Reach out to us at support@jlab.com or visit jlab.com/contact

REGISTER TODAY

jlab.com/register

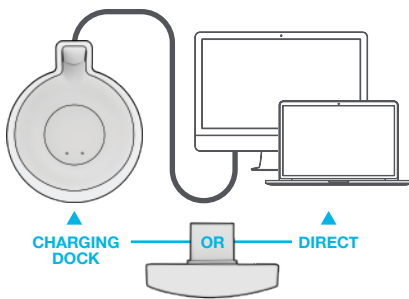
[Product updates](#) | [How-to tips](#)
[FAQs & more](#)

CHOOSE HOW TO CONNECT:

USB-C DONGLE

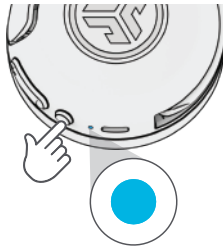
1

Plug dongle into charging dock or directly in PC/Mac. (avoid hubs/adapters) This connection overrides any Bluetooth connections.



2

Power ON Epic Work by press hold **3 seconds**.



3

Check your device settings.



SETUP DONGLE WITH PC (WINDOWS 7/8/10/11)

1. From the Start menu, select the Control Panel.
2. From the Control Panel, select the Sound icon.
3. Select the Recording tab and select "JLab Epic Work ANC".
4. Select the Playback tab and select "JLab Epic Work ANC".

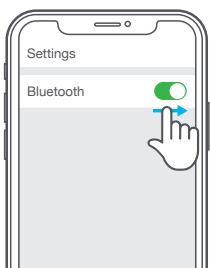
SETUP DONGLE WITH MAC (macOS 10.10 or HIGHER)

1. Open System Preferences and select the Sound icon.
2. Select the Input tab and select "JLab Epic Work ANC".
3. Select Output tab and select "JLab Epic Work ANC".
4. From this screen, set the Output volume to desired level.

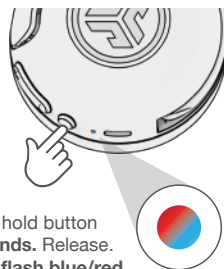
BLUETOOTH

1

Turn on Bluetooth in your device settings.



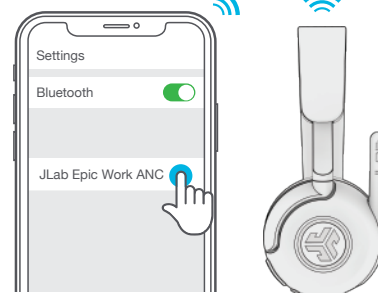
2



Press and hold button for **8 seconds**. Release. Lights will **flash blue/red**.

3

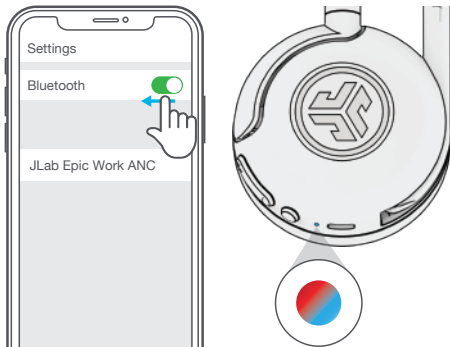
Select "JLab Epic Work ANC" in your device settings to connect.



BLUETOOTH MULTIPOINT (CONNECT 2 DEVICES SIMULTANEOUSLY) (USB-C dongle cannot be plugged in)

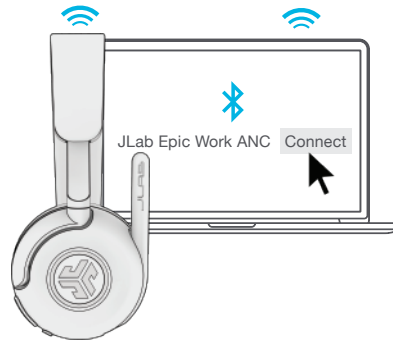
1

Once **FIRST** device is connected, turn off Bluetooth in device settings. Epic Work will auto enter Bluetooth Pairing.



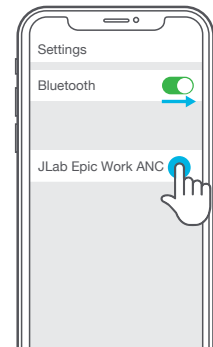
2

Enter your **SECOND** device Bluetooth settings and connect to Epic Work.



3

Enter your **FIRST** device settings. Turn on Bluetooth and reconnect to Epic Work.



BUTTON FUNCTIONS 1x ● 2x ●● Press Hold —

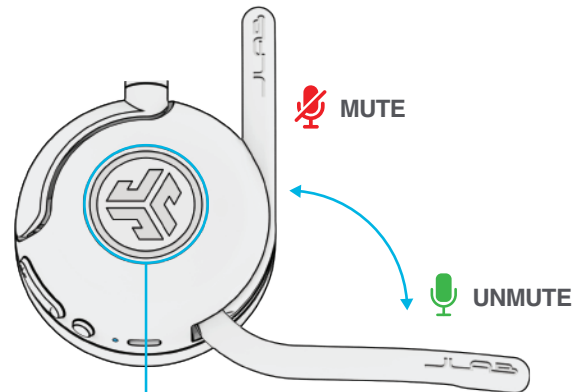
VOLUME ●
TRACK —

VOLUME ●
TRACK —

PLAY/PAUSE ●
ANSWER/HANG UP ●
REJECT 1 sec
POWER 3 sec
SIRI/OK GOOGLE ●●



SWITCH EQ
VOICE/MUSIC
—
both buttons

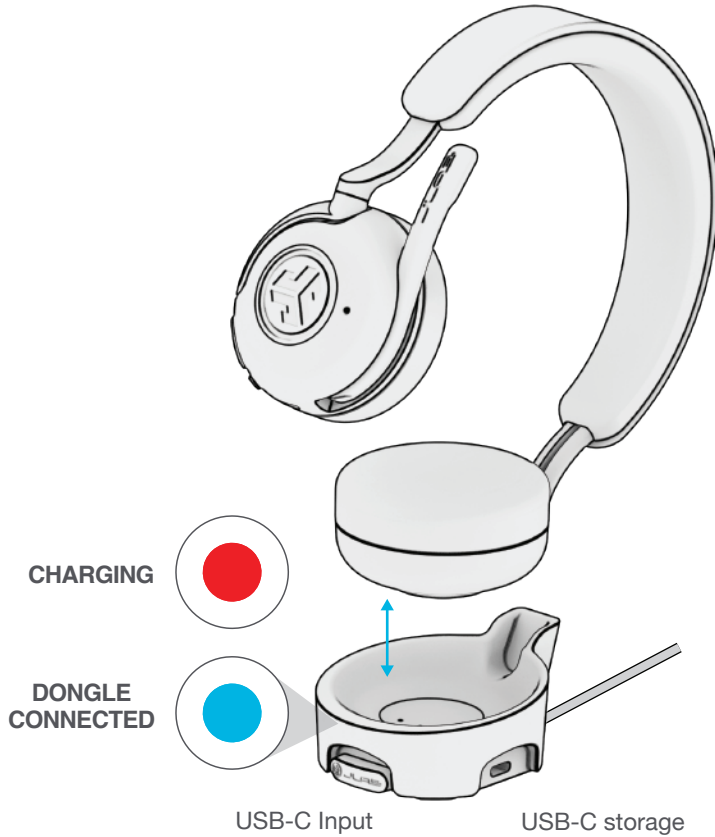


ANC/BE AWARE ●
HEAR YOURSELF (when on call) —

CHARGING DOCK

Epic Work will auto power ON/OFF from charging dock.

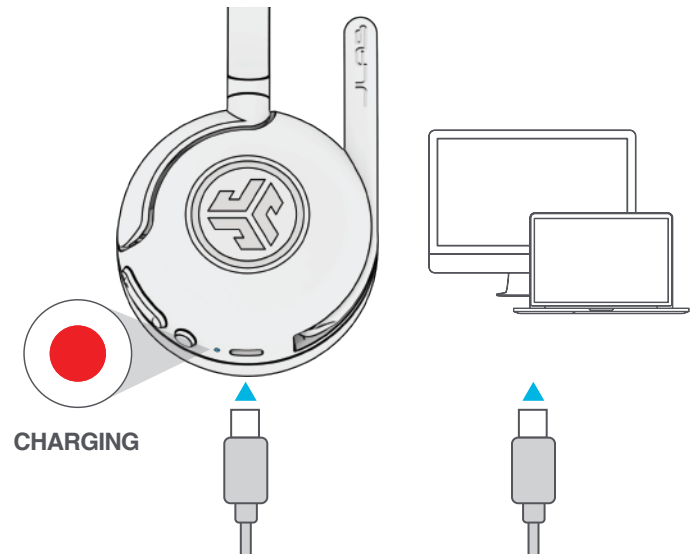
Dongle will auto connect to PC/Mac when plugged into charging dock.



WIRED CHARGING/WIRED CONNECTON

Connect to computer or USB-C output device.

Check your Input and Output PC/Mac audio settings.



DOWNLOAD THE MOBILE APP

Customize Epic Work features and update the latest software.

(ONLY works with Bluetooth connection)



SCAN ME



TROUBLESHOOTING

WINDOWS 7/8/10/11: NO MICROPHONE AUDIO

Depending on your PC, the Bluetooth might not detect the proper Bluetooth protocol. This is a known issue with certain Windows OS.

1. Open the Bluetooth & Device settings and enter the View more devices tab.
2. Remove all Bluetooth devices that are already connected.
3. Reconnect your Epic Work FIRST to your PC, followed by other Bluetooth devices. The Epic Work should display "Connected voice, music".



[Shop products](#) | [Product alerts](#) | [Burn-in your headphones](#)

JLab Store + Burn-in Tool

