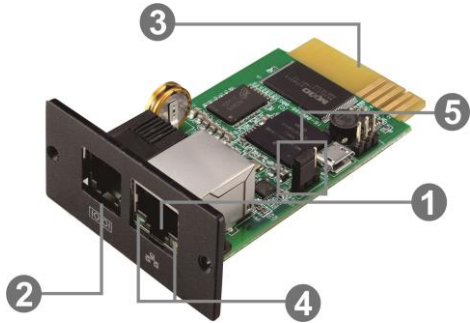


1. Overview



- ❶ Ethernet port (10/100Base-T)
- ❷ Sensor port/data transmission port
- ❸ Golden finger: connects to UPS slot
- ❹ Ethernet port status LEDs
- ❺ Jumper setting to restore default setting

Ethernet port status LEDs:

100M LED (Green)	On	Port is operating at 100Mbit/s
	Off	Current web bandwidth is 10Mbit/s
Link status LED (Yellow)	Flash	Link Active
	Off	Card is not connected to the network

Pin assignment for Jumper:

Pin #	Status	Description
Pin 1 & Pin 2	Closed	Normal operation
Pin 2 & Pin 3	Closed	After re-connecting utility, the IP address of SNMP web card and password will restore to default setting. Default static IP address: (192.168.102.230) Default password: 12345678

NOTICE: After setting is restored to default, be sure to change the jumper setting to connect Pin 1 and Pin 2 for normal operation.

2. Installation and Connection

Follow below steps to install and connect the SNMP web card:

Step 1: Remove the cover of intelligent slot on the back panel of UPS and retain the screws

Step 2: Slide the card into the open slot and secure with the screws from step 1. (see chart 2-1)



Chart 2-1

Refer to chart 2-2 for connecting the SNMP web card.

Step 3: Plug Ethernet cable to the Ethernet port (RJ-45) on the SNMP web manager.

Step 4: Use one more Ethernet cable. Connect one end to the sensor port on the SNMP web manager and the other end to the optional environmental monitoring device.

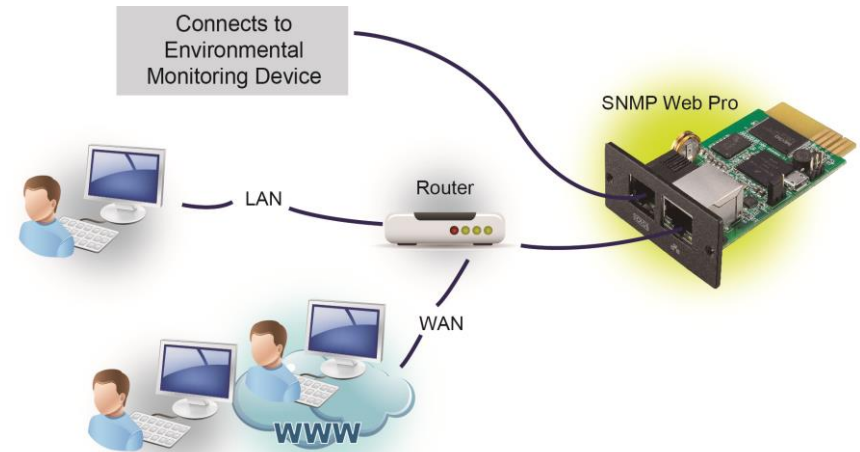


Chart 2-2

3. Configuration

- a) Please install SNMP web manager software in your PC. After software is installed successfully, the Installer will leave a shortcut icon on your desktop.



Chart 3-1

- b) Enter specific IP address to search all SNMP devices in LAN. The SNMP web manager is default applied static IP address as 192.168.102.230, default subnet mask as 255.255.255.0, and default gateway as 192.168.102.254. Users can modify IP address or apply DHCP mode through web server of SNMP web pro card, SSH Client or SNMP Web Manager.

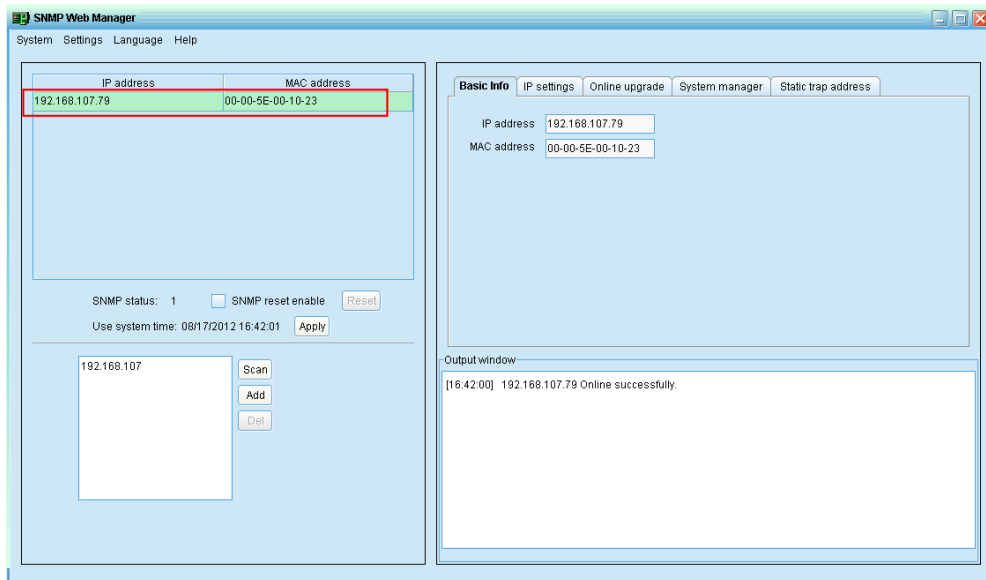


Chart 3-2

- c) User can modify IP setting, online upgrade, password management, and static trap address setting in SNMP Web Manager interface. It is necessary to enter password for any medications. The default password is 12345678.

4. Monitoring

Double click the selected device from the device list (refer to Chart 3-2) to open web page as Chart 4-1.

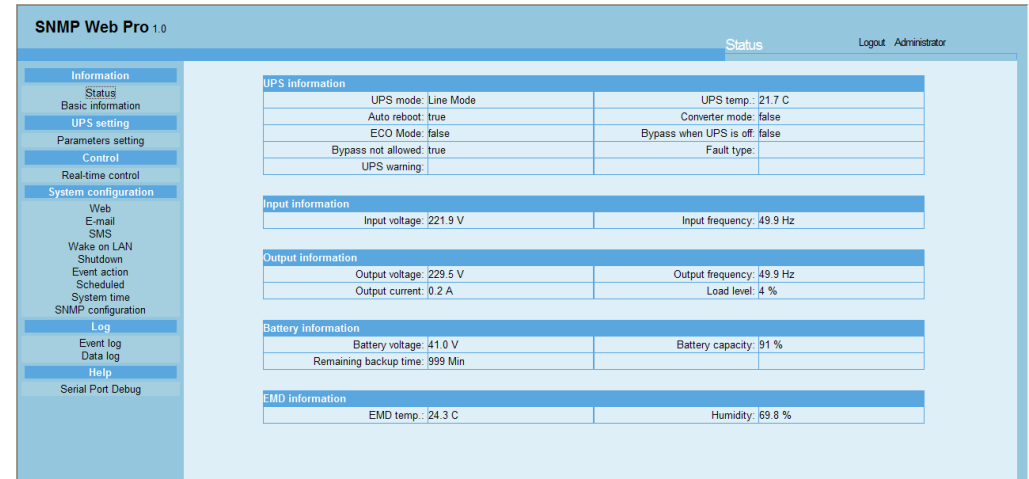


Chart 4-1

Please check SNMP Web Manager User Manual for detailed configuration.