

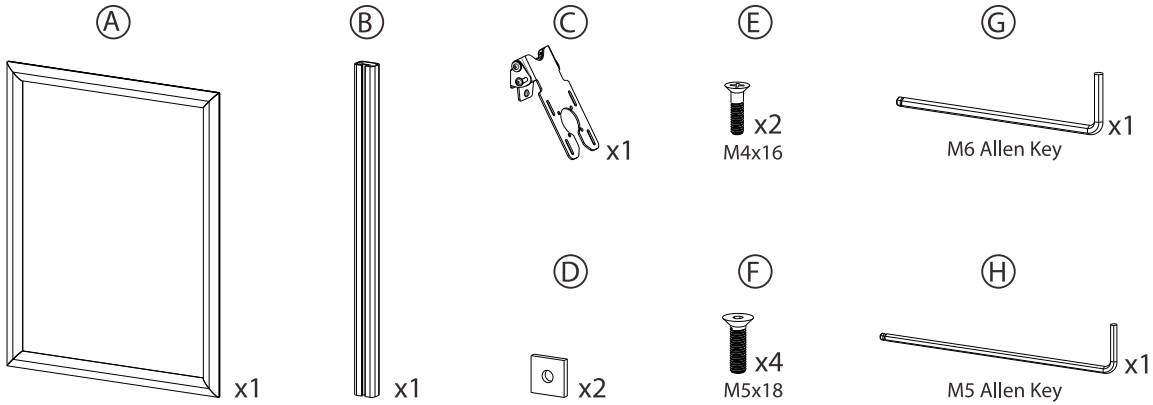


# ADD-on Graphic and Bracket for CTA Floorstands (Black)

ADD-GRAPHIC

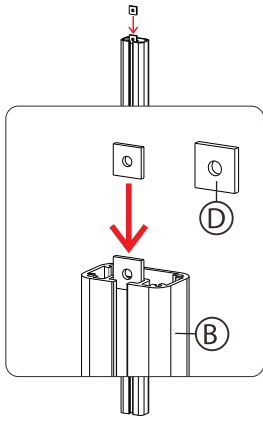
INSTALLATION - MANUAL

## CONTENTS:

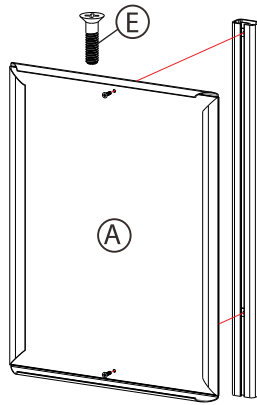


## INSTALLATION:

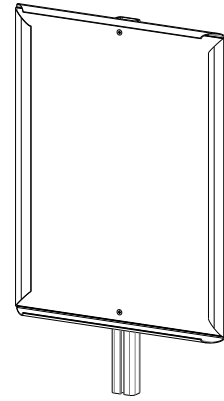
### 1. Attaching bracket to graphic panel



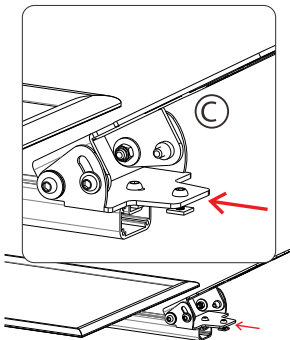
1A. Grab both mounting component (D) and slide it through the bracket (B) as illustrated.



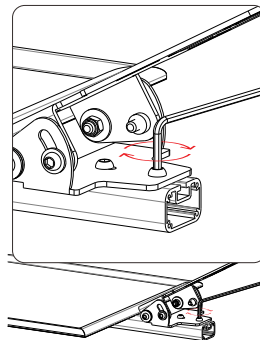
1B. Align mounting component (D) with the holes of graphic panel (A). Rotate in two screws (E) with screwdriver (not included) until securely fastened.



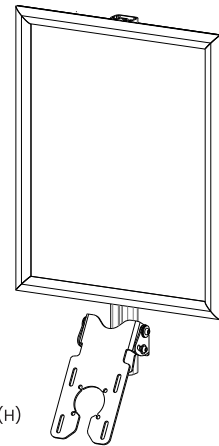
### 2. Attaching VESA component



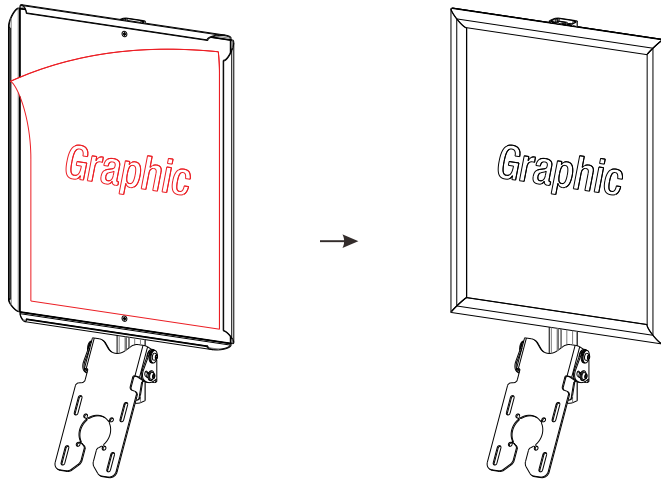
2A. Identify the VESA component (C) and slide the back side screw grooves to the U-shape of the front of the center bracket (B) as illustrated above.



2B. When desired location is located, use provided tool (H) and rotate in front of screws as illustrated above until securely fastened.

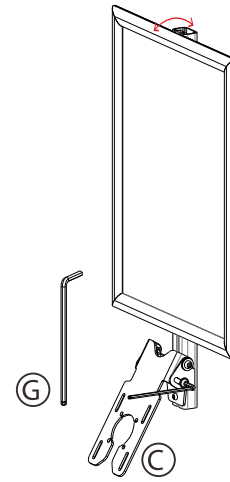


### 3. Attaching Graphic Decal



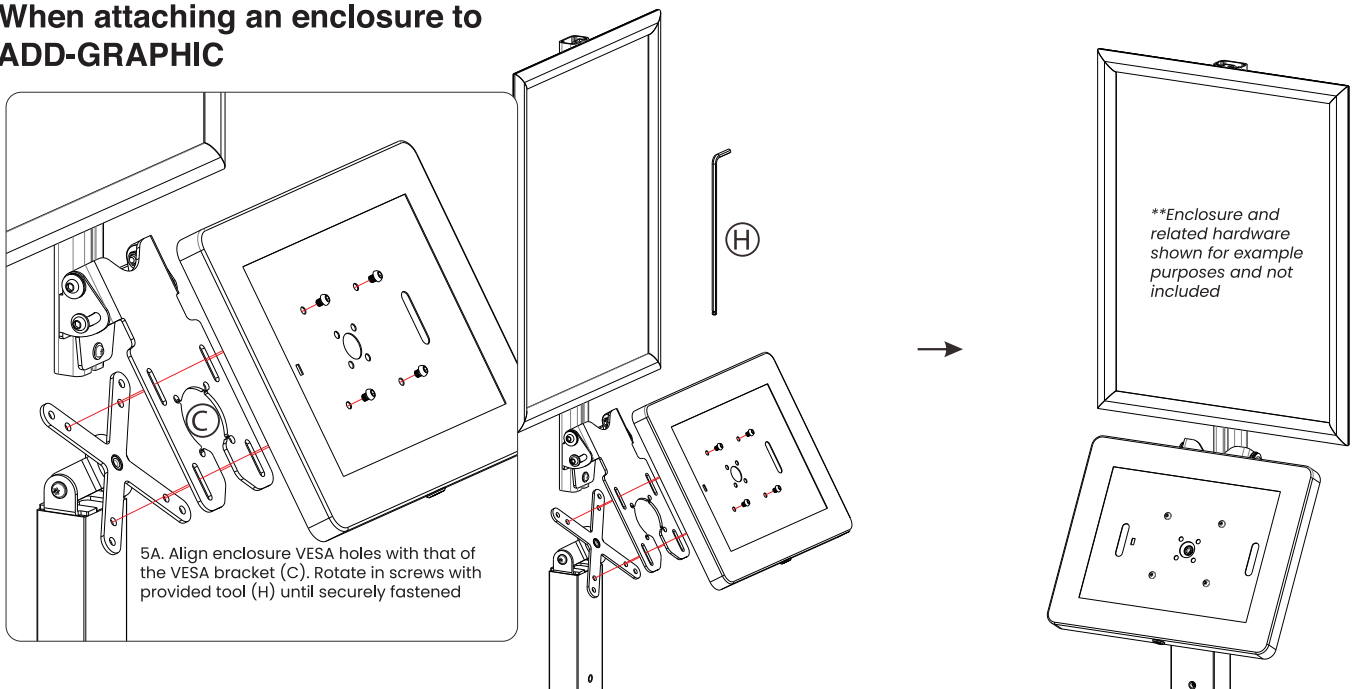
3A. Using your hands, fold up the edges of the frame. Then, peel of graphic adhesive backing and apply to graphic panel surface in a thorough and methodical manner where it gets applied with no imperfections. Fold down the edges of the frame afterwards.

### 4. Adjusting Tilt Angle



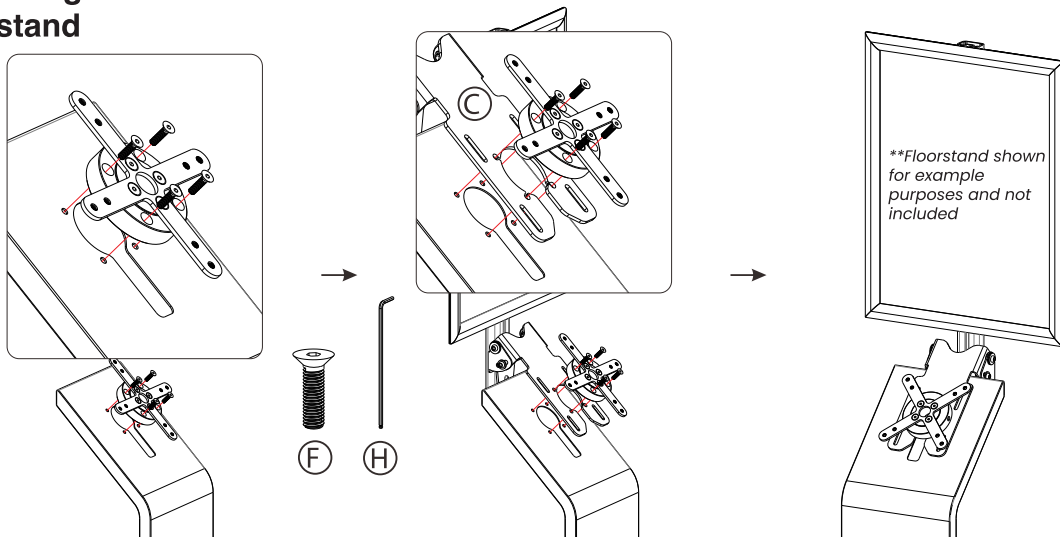
4A. Using provided tool (G), rotate side screws of VESA component (C) to loosen. Adjust to preferred tilt angle. Then rotate opposite way to tighten until securely fastened.

### 5. When attaching an enclosure to ADD-GRAPHIC



5A. Align enclosure VESA holes with that of the VESA bracket (C). Rotate in screws with provided tool (H) until securely fastened

### 6. When attaching ADD-GRAPHIC to a CTA floor stand



6A. Remove floorstand VESA component unscrewing the screws (F) using provided tool (H). Insert VESA bracket of graphic add-on (C). Align VESA holes of both components. Rotate back screws (F) using provided tool (H) until securely fastened.