



# Protective Case with Built-in 360° Rotatable Grip Kickstand For iPad 10th Generation 10.9" Tablet

PAD-PCGK109 / PAD-PCGK109W / PAD-PCGK109B / PAD-PCGK109R

## INSTRUCTION - MANUAL

### CONTENTS



X1

\*\*Tablet Not Included

### TABLET CASE FEATURES

Impact resistant protection

360° rotation

Adjustable hand strap

Foldable kickstand designed to provide maximum safety

Carry strap hooks

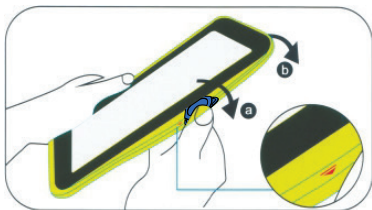


\*\*Tablet Not Included

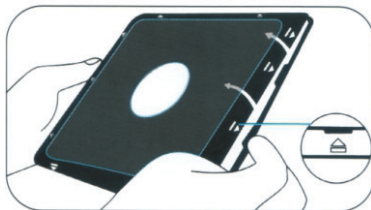
# INSTRUCTIONS

\*\*if your iPad has a previously installed screen protector, please remove it before continuing.

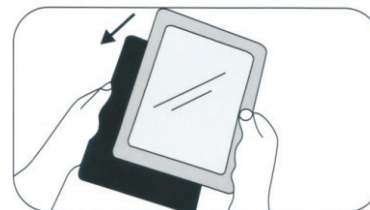
## 1. How to insert tablet into case



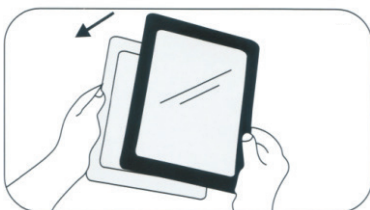
1A. Remove the external silicone sleeve with either your hands or provided clip tool. Then work your way around clockwise peelign the silicone case off



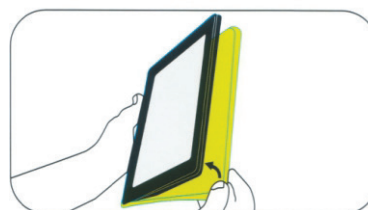
1B. Locate clips all around the perimeter of the inner hard case. Apply pressure to each clip and unclip all around. Once everything is unclipped, the front cover will come off



1C. Insert tablet into rear cover as illustrated

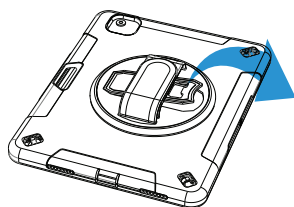


1D. Once tablet is inserted into the rear cover, place the front cover over and clip in on all sides

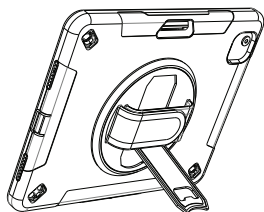


1E. Re-apply the silicone jacket. With your hands, start with a corner, then work clockwise pressing the jacket back on

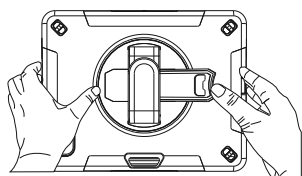
## 2. How to flip out kickstand



2A. Locate kickstand at case rear and fold out underneath strap.



2B. Display tablet at desired viewing angle.



2C. Press kickstand back in to return to handheld mode.

## 3. How to use in handheld

\*\*Tablet Not Included



3A. Identify velcro handstrap and adjust to fitted size. Insert your hand as shown and you're ready for mobile setup.

## 4. Attaching carry strap



\*\*Strap Not Included

4A. If you have the corresponding shoulder strap (sold separately), insert the ends into the strap holes. Then tie them up and clasp the front as shown to the left.