

ZYXEL

SFP/SFP+ Fiber and Copper Transceivers

User's Guide

ENGLISH | РУССКИЙ



Copyright © 2022 Zyxel and/or its affiliates. All Rights Reserved.

Introduction

This User's Guide provides information, as well as installation and removal instructions for the following transceiver modules:

- Fiber SFP/SFP+
- Copper SFP/SFP+

Use a transceiver module for a fiber or Ethernet connection. You can install and remove a module while your device is operating.

All modules use 3.3V power input and use the following connector types:

- Fiber module - LC connector
 - Copper module - RJ-45 connector
- An SFP/SFP+ module may support data rates of 100M/1G/10G bps and single-mode/multi-mode connection depending on its specification.

Handling Warning

All modules are static sensitive. To prevent damage from electrostatic discharge (ESD), it is recommended you use an ESD preventive wrist strap.

All modules are dust sensitive. When not in use, always keep the dust plug on. Avoid getting dust and other contaminant into the optical bores, as the optics do not work correctly when obstructed with dust.

Safety Warning

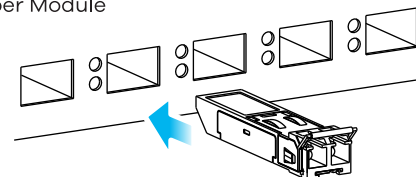
- All fiber modules are equipped with a Class 1 laser, which emits invisible radiation. Read the following safety warnings carefully.
- To avoid possible eye injury, do not look into an operating fiber module's connectors.
 - Laser radiation is present when the device or system is powered up.
 - Only trained and qualified personnel should be allowed to install or replace these modules.

Environmental Warnings

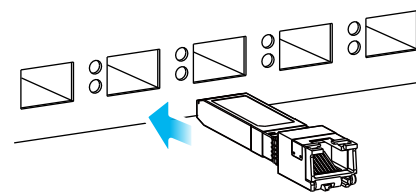
Dispose of your fiber/copper module according to all national laws and regulations.

1 Installing a Module

Fiber Module



Copper Module



- EN**
- ① Attach an ESD preventive wrist strap to your wrist and attach the other end to a bare metal surface.
 - ② Remove the module from its protective packaging.
 - ③ Align the module in front of the slot opening on a device.
 - ④ Insert the module into the slot until the module snaps into place.
Note : Module installation orientation varies depending on your device. Your module comes with a mechanism that prevents incorrect insertion. Do NOT force or twist the module into a slot.

- RU**
- ① Прикрепите антистатический браслет к вашему запястью и к голой металлической поверхности.
 - ② Достаньте модуль из защитной упаковки.
 - ③ Выровните модуль перед отверстием слота на устройстве.
 - ④ Вставьте модуль в слот, пока модуль не встанет на место со щелчком.
Примечание: Ориентация (положение) модуля может быть разной, в зависимости от вашего устройства. Данный модуль оснащен механизмом, предотвращающим неправильную установку. НЕ прилагайте усилий и не скручивайте модуль при установке.

ZYXEL

Your Networking Ally



Warranty Card

Thank you for purchasing Zyxel product. Zyxel has the great reputation in the market to provide best quality and performance on product and service to our customer. It is our pleasure to invite you to visit our website and register your product for receiving the latest Firmware, drive and product related information. If you still have further question or problem related to the product, please contact your vendor or our subsidiaries worldwide for further warranty information, kindly be noted the warranty terms may vary by regions, detail information is available on our website, please link to:
http://www.zyxel.com/support/warranty_information.shtml

Purchase Information

Zyxel Product Name:

Hardware Serial Number:

Date of Purchase:

(In certain countries, the warranty will be validated with seller's signature and stamp):

...warranty must be validated with the seller's ...

Support Information

EU, Russia

📧 <https://support.zyxel.eu>

USA

☎ +1 800 255 4101

✉ support@zyxel.com

EU Importer

Zyxel Communications A/S
Gladsaxevej 378, 2. th. 2860 Søborg, Denmark
<https://www.zyxel.com/dk/da/>

UK Importer

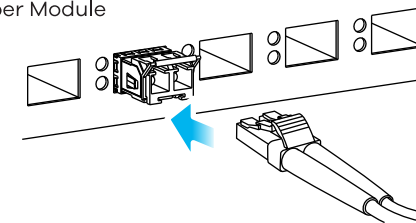
Zyxel Communications UK Ltd.
2 Old Row Court, Rose Street, Wokingham,
RG40 1XZ, United Kingdom (UK)
<https://www.zyxel.com/uk/en/>

US Importer

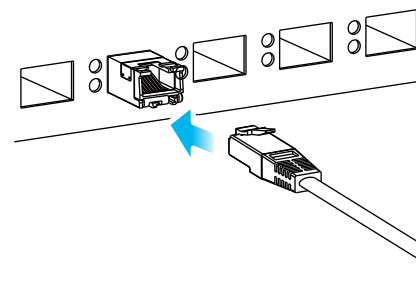
Zyxel Communications, Inc
1130 North Miller Street Anaheim, CA 92806-2001
<https://www.zyxel.com/us/en/>

2 Connecting Cables

Fiber Module



Copper Module

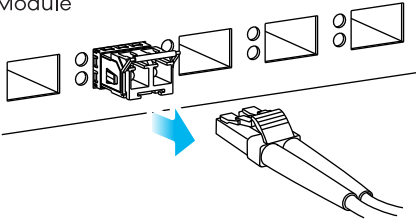


- EN**
- ① Remove the dust plugs from the module and cables.
 - ② Insert one end of the cable into the module.
Note : Refer to the user's guide that comes with your Device for module connection status.

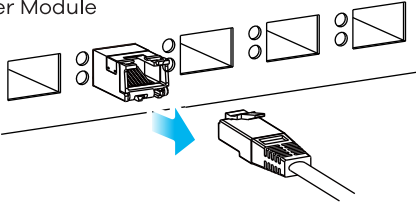
- RU**
- ① Снимите пылезащитные заглушки с модуля и кабеля.
 - ② Вставьте один конец кабеля в модуль.
Примечание: Обратитесь к руководству пользователя, прилагаемому к вашему Устройству, чтобы узнать о статусе подключения модуля.

1 Removing Cables

Fiber Module



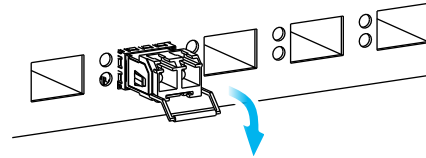
Copper Module



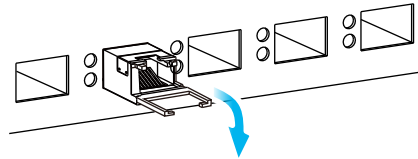
- EN** ① Attach an ESD preventive wrist strap to your wrist and attach the other end to a bare metal surface on the chassis.
② Disconnect the cable from the module.
- RU** ① Прикрепите антистатический браслет к вашему запястью и к голой металлической поверхности корпуса.
② Отсоедините кабель от модуля.

2 Unlocking a Module

Fiber Module



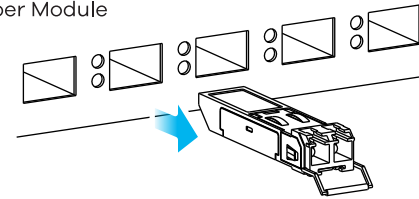
Copper Module



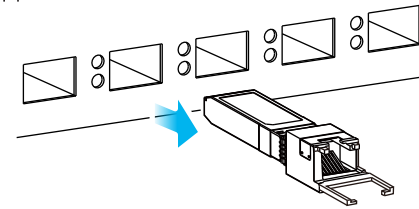
- Note:** The latching mechanisms might be slightly different by module types.
- EN** ① Pull out the latch and down to unlock a module.
- RU** ① Потяните защелку вниз, чтобы разблокировать модуль.

3 Removing a Module

Fiber Module



Copper Module



- EN** ① Pull the latch, or use your thumb and index finger to grasp the tabs on both sides of the module, and carefully slide it out of the slot. **Note:** Do NOT force or twist the module out of a slot. If the module will not slide out, grasp the tabs on both sides of the module with a slight up/down motion and carefully slide it out of the slot. If unsuccessful, contact Zyxel Support to prevent damage to your Zyxel Device and module.
② Insert the dust plug into the ports on a module.
- RU** ① Потяните защелку или возьмитесь большим и указательным пальцами за выступы с обеих сторон модуля и осторожно выдвиньте его из слота. **Примечание:** НЕ прилагайте усилий и не выкручивайте модуль из разъема. Если модуль не выдвигается, возьмитесь за выступы на обеих сторонах модуля и с небольшими движениями вверх/вниз осторожно вытащите его из слота. В случае неудачи обратитесь в службу поддержки Zyxel, чтобы предотвратить повреждение устройства и модуля.
② Вставьте заглушку в порт на модуле.