

Installation Guide

Belkin Secure KVM Management Tool Ver. 1.81 – Administrator Guide Ver. 2.0

List of supported SW versions for the KVM Management Tool setup:

All SKVM with the below firmware and software versions:

- EX_SC_15220623_PP_17150523
- SC446_18160622-PP446_13130622

Compatible models include:

Universal 2nd Gen - Secure KVM

F1DN102KVM-UN-4	F1DN102KVM-UN4C	F1DN202KVM-UN4C
F1DN104KVM-UN-4	F1DN102KVM-UNN4	F1DN204KVM-UNN4
F1DN108KVM-UN-4	F1DN104KVM-UNN4	F1DN204KVM-UN4C
F1DN116KVM-UN-4	F1DN104KVM-UN4C	F1DN204KVMUNN4Z
F1DN202KVM-UN-4	F1DN104KVMUNN4Z	
F1DN204KVM-UN-4	F1DN108KVM-UNN4	
F1DN208KVM-UN-4	F1DN202KVM-UNN4	

Universal 2nd Gen - Modular Secure KVM

F1DN102MOD-BA-4	F1DN102MOD-HH-4	F1DN202MOD-PP-4
F1DN104MOD-BA-4	F1DN102MOD-PP-4	F1DN204MOD-DD-4
F1DN108MOD-BA-4	F1DN104MOD-DD-4	F1DN204MOD-HH-4
F1DN202MOD-BA-4	F1DN104MOD-HH-4	F1DN204MOD-PP-4
F1DN204MOD-BA-4	F1DN104MOD-PP-4	
F1DN208MOD-BA-4	F1DN202MOD-DD-4	
F1DN102MOD-DD-4	F1DN202MOD-HH-4	

Installation Guide

Hardware Requirements:

- Belkin Secure KVM
- Windows-compatible PC (Windows 10/11 8GB RAM)
- USB-to-RJ11 cable (F1DN-RC-USB-CBL)
 - To create your own cable, please refer to the Belkin Administrator Manual found at: <https://www.belkin.com/products/product-resources/cybersecurity-skvm/resources/>.

Software Requirements:

- Browser: Chrome or Edge only
- OS: Windows 10/11 8GB RAM
- Belkin SKVM Management Software version 1.81

Installation Instructions:

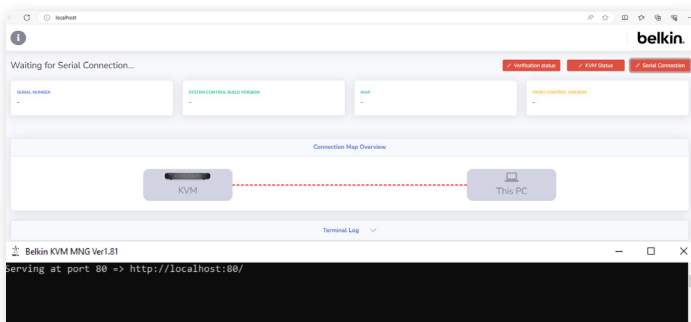
1 Download from Belkin Resource Center at:

<https://www.belkin.com/products/product-resources/cybersecurity-skvm/resources/>

- Install the application: Belkin KVM MNG Ver1.81.EXE.
- Choose the location to install files and select "Next".
- Create a desktop shortcut.
- Select "Install" to begin and follow the installation wizard to complete the process.

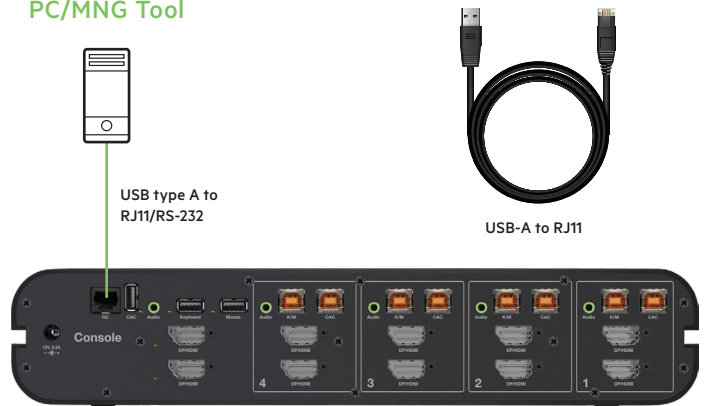
2 Launch the application

- A Chrome/Edge webpage will open with a local server host window in the background.



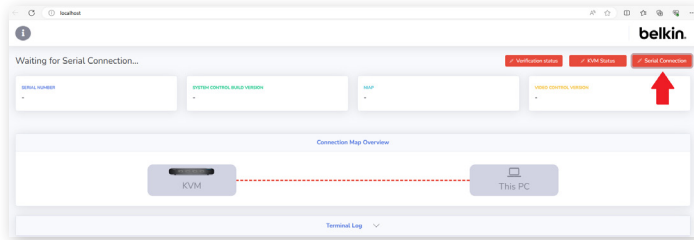
- Connect the PC and SKVM as follows:
 - Using the USB type A to RJ11/RS-232 cable, connect USB-A to the PC and RJ11/RS-232 to the RCU port on the SKVM.

PC/MNG Tool

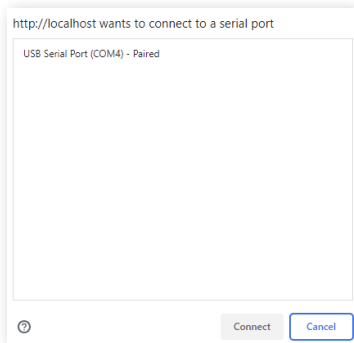


Belkin Secure KVM

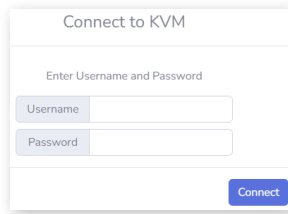
- c. Connect the AC power cable to the SKVM.
- d. On the webpage upper right corner, Select and click “Serial Connection”.



- e. A popup window will appear. On the “localhost connection” window, select the “USB Serial Port (COMx)” where “x” represents the available COM port.
 - Select “Connect”

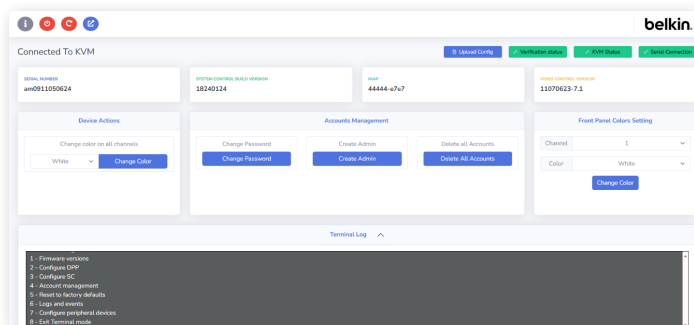


- f. Enter the username and password in the “Connect to KVM” popup window that follows. Wait approximately 30 seconds for the application to connect and collect information from the KVM.
 - If logging into Terminal Mode for the first time, use the following values:
 Username: admin1234
 Password: 1234ABCDefg!@#
 Password must be changed upon initial connection



IMPORTANT: The main admin user account and password cannot be reset or deleted. If the password is mistyped or misplaced, it cannot be recovered. If you misplace the password, your SKVM/SKM will continue to function with the last setting changes made to it.

- g. Confirm that “Serial Connection,” “KVM Status” and “Workstation Status” buttons have turned green indicating a successful connection to the SKVM. The SKVM information will be displayed in the top row including Serial Number, Software Version, NIAP Version and Video Control Board Version.



In the event of an error message during login, follow these steps:

1. Disconnect the USB-A to RJ11 cable from the PC side.
2. Power cycle the SKVM.
3. Reconnect the USB-A to RJ11 cable back to the PC.
4. Launch the application.

Once the application has launched, the menu options become accessible.

Toolbar Options:

- Show Information (Version)
- Logoff from Terminal Mode
- Factory Defaults Reset
- Remain in External Management Mode

Device Actions Menu

- Change the color of all the channels

Account Management Menu

- Change Passwords
- Create Admin (User)
- Delete all Accounts

Front Panel Colors Settings Menu

- Change the Color of a Single selected Channel

Upload Config Menu

- Create new configuration
- Revert Changes (Restore Configurations to last imported settings)
- Export Configuration (Export your Configuration)
- Load Config to KVM (Import your Configuration)
- Front Panel Colors Settings
- Account Management

Toolbar Options:

To verify your SKVM Management Tool Version, click on the ⓘ icon.

To Logoff Terminal Mode, click on the ⏻ icon.

To Restore to Factory Settings, click on the ⏪ icon.

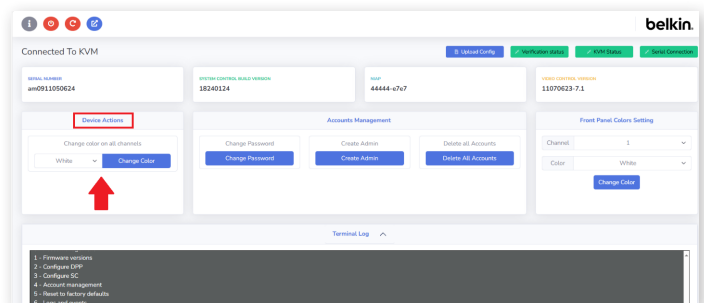
To Remain in External Management and Close the Application, click on the 🗑️ icon.

- This option allows the administrator to leave the SKVM in Admin Mode running in terminal preventing an end user from making any changes without the use of the External Management tool.

Device Actions Menu:

Change the color of all the channels:

1. Scroll and select the color requested.
2. Click “Change Color”.
3. This operation will take 30 seconds. Wait for completion.



Account Management Menu:

Change Passwords:

1. Click "Change Password".
2. Click "Confirm" to continue or "Cancel" to return.
3. Type the new password according to the password convention.
 - Password convention:
 - > Minimum of 8 characters to a Maximum of 24 characters.
 - > Minimum of 1 Uppercase letter and 1 Lowercase letter.
 - > Minimum of 1 Number.
 - > Minimum of 1 Symbol.
4. Retype the new password to confirm.
5. Click "Send new Password" to continue or "Cancel" to return.
6. Wait for the popup window to confirm changes.

The dialog box is titled "Change Password". It contains two input fields: "Enter New Password" and "Confirm The Password". Below the fields, there is a "Password:" section with a bulleted list of requirements: 8 characters long but not longer than 24 characters, at least one capital and one lowercase letter, at least one number, and at least one symbol. At the bottom, there are "Cancel" and "Send new Password" buttons.

Create User:

1. Click "Create Admin"
2. Click "Confirm" to continue or "Cancel" to return.
3. Type the Username according to the username convention.
 - Username convention:
 - > Minimum 5 characters to a Maximum of 11 characters.
 - > Minimum 1 Uppercase letter and 1 Lowercase letter.
4. Type the password according to the password convention.
 - Password convention:
 - > Minimum of 8 characters to a Maximum of 24 characters.
 - > Minimum of 1 Uppercase letter and 1 Lowercase letter.
 - > Minimum of 1 Number.
 - > Minimum of 1 Symbol.
5. Retype the new password to confirm.
6. Click "Create User" to continue or "Cancel" to return.
7. Wait for the popup window to confirm changes.

The dialog box is titled "Create admin account". It contains three input fields: "Username", "Password", and "Confirm". Below the fields, there are two sections: "Username:" with requirements of 5-11 characters and at least one uppercase and lowercase letter; and "Password:" with requirements of 8-24 characters, at least one uppercase and lowercase letter, one number, and one symbol. At the bottom, there are "Cancel" and "Create User" buttons.

Delete all Accounts:

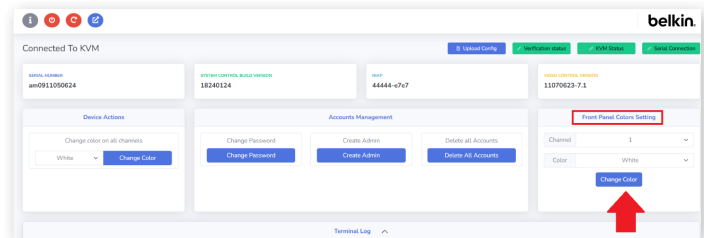
1. Click "Delete all Accounts".
2. Click "Confirm" to continue or "Cancel" to return.
3. Wait for the popup window to confirm changes.

The dialog box is titled "Confirm the action". It contains the text "You will Delete all accounts on KVM!". At the bottom, there are "Cancel" and "Confirm" buttons.

Front Panel Colors Settings Menu:

Change the Color of a single selected Channel:

1. Select the channel from the dropdown menu.
2. Select the desired color from the dropdown menu.
3. Click "Change Color".
4. This operation will take 30 seconds. Wait for completion.



Upload Config Menu:

Create your own configuration, export it or import one that you have already created.

Create a new configuration:

1. For each channel, scroll and select the color requested.
2. For each username, type the username according to the username convention.
 - Username convention:
 - > Minimum 5 characters to a Maximum of 11 characters.
 - > Minimum 1 Uppercase letter and 1 Lowercase letter.
3. For each username, type the password according to the password convention.
 - Password convention:
 - > Minimum of 8 characters to a maximum of 24 characters.
 - > Minimum of 1 Uppercase letter and 1 Lowercase letter.
 - > Minimum of 1 Number.
 - > Minimum of 1 Symbol.
4. Check the boxes according to your configuration plan.
5. Click "Load Config to KVM" to continue or "Close" to return.
6. Wait for the popup window to confirm changes.

Export your configuration:

1. Click "Export Configuration".
2. A KVMConfig.json file will be created in your profile Download folder.

Import your configuration:

1. Click "Choose File".
2. Navigate to the folder containing the KVMConfig.json you want to import.
3. Select and Open the KVMConfig.json you want to import.
4. Click "Import Configuration".
5. Check the boxes according to your configuration plan.
6. Click "Load Config to KVM" to continue or "Close" to return.
7. Wait for the popup window to confirm changes.

See Screenshot below

The screenshot displays the 'Configuration Setting' window. At the top, there are buttons for 'Choose File', 'No file chosen', 'Revert changes', and 'Export Configuration'. Below this is the 'Front Panel Colors Setting' section, which contains 16 channels (Channel 1 to Channel 16), each with a color selection dropdown menu currently set to 'White'. The 'Accounts Management' section below it features two sets of input fields for 'Username' and 'Password', each with a visibility toggle icon. Underneath the input fields, there are two columns of bullet points detailing password requirements: 'Usernames must be at least 5 characters long', 'Usernames must be not longer than 11 characters', 'Have at least one Uppercase letter', and 'Have at least one Lowercase letter' for the first column; and '8 characters long but not longer than 24 characters', 'Have at least one capital and one lowercase letter', 'Have at least one number', and 'Have at least one symbol' for the second column. At the bottom of the window, there is a 'Close' button, a 'Settings to set:' section with radio buttons for 'FP Colors', 'Account 1', and 'Account 2', and a 'Load Config to KVM' button.

Configuration Actions (External Management):

- This action is reversible only by using the external management application.
1. Click on "External Management".
 2. Click "Confirm" to continue or "Cancel" to return.