



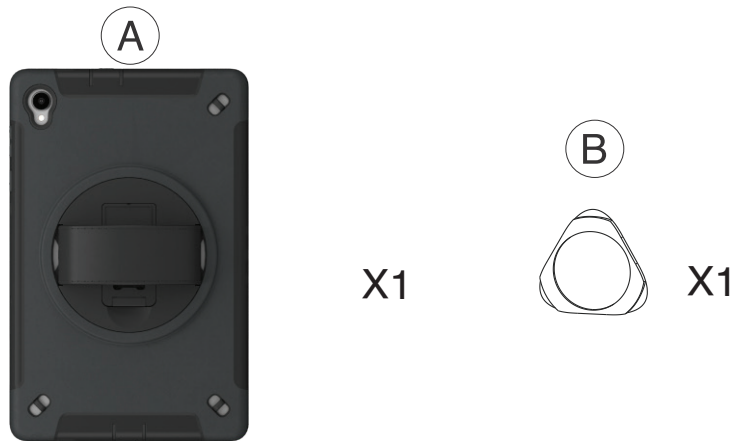
# Protective Case with Built-in 360° Rotatable Grip Kickstand

For Lenovo K10 2021

PAD-PCGKK10

INSTRUCTION - MANUAL

## CONTENTS



\*\*Tablet Not Included

## TABLET CASE FEATURES

\*\*Tablet Not Included

Impact case to protect your tablet

360° rotation

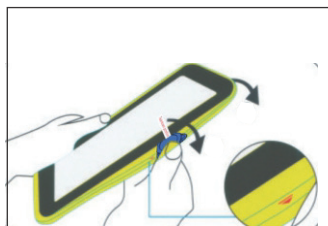
Foldable kickstand designed to provide maximum safety

Carry strap hooks



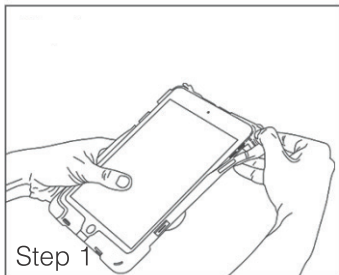
# INSTRUCTIONS

## 1. How to insert tablet into case

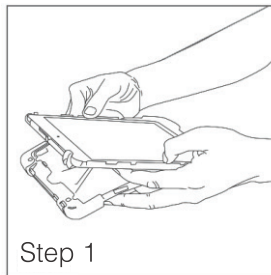


Step 1

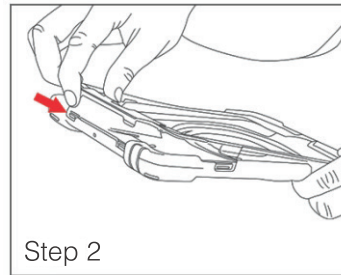
1A. Identify the arrows at the middle of the long side of the case. Using your fingers or the clip tool (B), peel away the outside layer of the case. Work your way around until the entire outer layer comes off.



Step 1

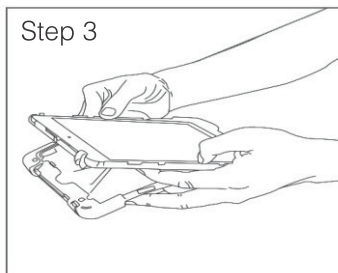


Step 1



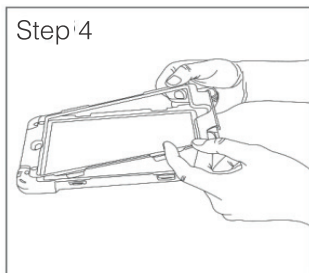
Step 2

1B. Peel away the plastic frame starting with the bottom of the case as shown to the left. Work your way around the perimeter, unclipping the frame until they can be easily separated.



Step 3

1C. Insert tablet into the back portion of the hard case



Step 4

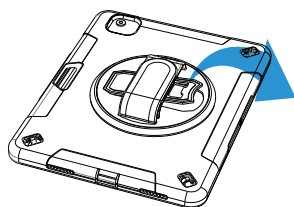
1D. Re-insert the front frame. Make sure you go around the perimeter of the case and click in all the clips securely.



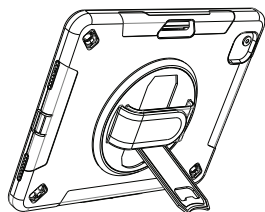
Step 5

1E. Place the outer layer back on. Start at the corner, re-apply the silicone jacket around the back portion of the hard case and you're all set.

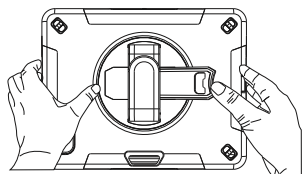
## 2. How to flip out kickstand



2A. Locate kickstand at case rear and fold out underneath strap.

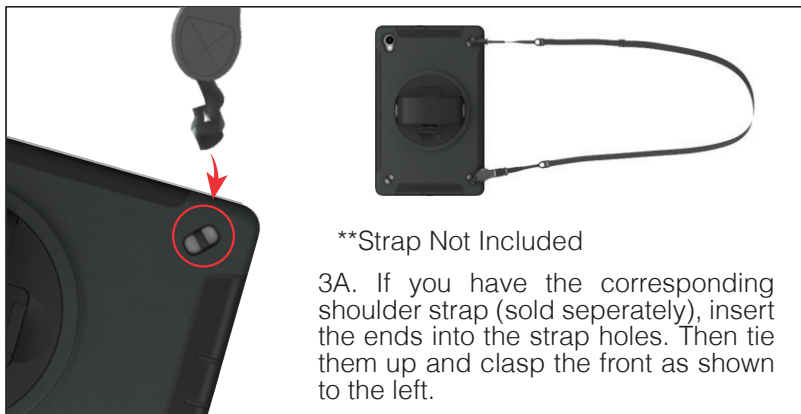


2B. Display tablet at desired viewing angle.



2C. Press kickstand back in to return to handheld mode.

## 3. Attaching carry strap



\*\*Strap Not Included

3A. If you have the corresponding shoulder strap (sold separately), insert the ends into the strap holes. Then tie them up and clasp the front as shown to the left.