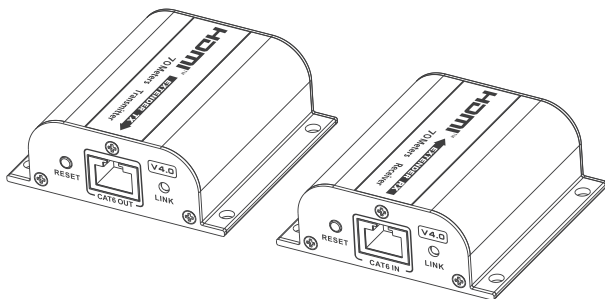


TrueReach
HDMI™ EXTENDER
 Point to Point Extender



User Manual
 Y10G008-B1



Important Safety Notice

1. Please distinguish the transmitter and receiver before installation.
2. Do not disassemble the machine to repair the product during the working process to avoid electric shock.
3. Please cut off the power before installation. Live installation may damage the equipment.
4. Do not expose the devices to rain, moisture and liquid.
5. Use a 5V/500mA DC adapter only. Make sure the specification matched if using 3rd party DC adapters.

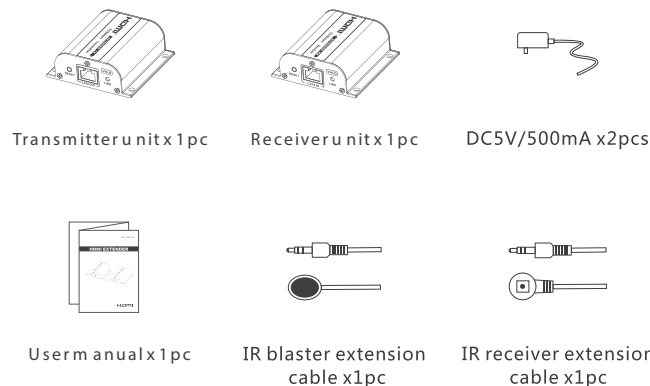
Introduction

This HDMI Extender includes a transmitter unit and a receiver unit, allows the HDMI signal to be transmitted up to 70 meters at 1080p resolution using a Cat6/6A/7 network cable. It adopts a point-to-point connection configuration, supports IR pass-back. It is perfect for outdoor advertising, monitor system, home entertainment, conference, etc.

Features

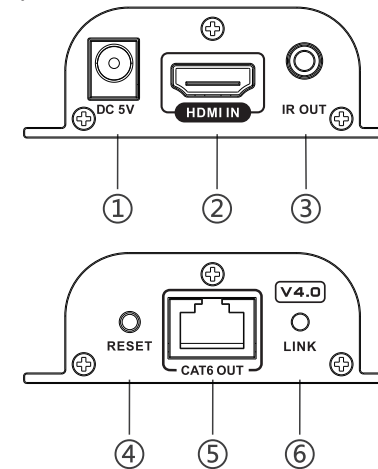
- Zero latency.
- Support up to 4K@30Hz resolution.
- Support CAT6/6A/7 network cables, 1080p@60Hz transmission distance is up to 70meters, 4K@30Hz transmission distance is up to 40 meters.
- Support IR pass-back function (20~60KHz).
- Support HDR10.
- Support EDID passthrough.
- Audio formats supported: PCM, LPCM, DTS HD, DTS Audio
- Automatically adjusts parameters to match different network cables and achieve the best display performance.
- Lightning Protection, Surge Protection, ESD Protection.

Package Contents



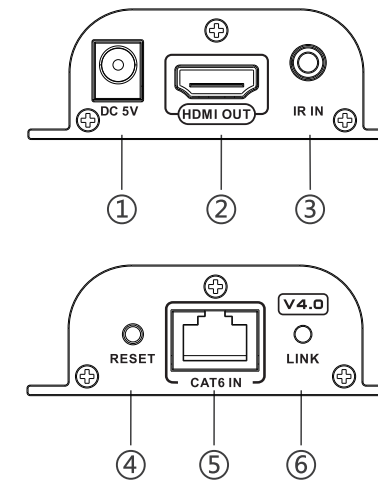
Interfaces

Transmitter (TX)



① DC 5V input	Connect to the 5V/500mA DC power adapter.
② HDMI input	Connect to a HDMI source device.
③ IR OUT	Connect the IR blaster extension cable, please keep the infrared transmitter as close as possible to the signal source device when using.
④ Reset button	Press the button to restart the device.
⑤ RJ45 signal output	Output modulated HDMI signal.
⑥ Signal Indicator	No HDMI signal is transmitted, the indicator flashes. HDMI signal is transmitted, the indicator stays on.

Interfaces



① DC 5V input	Connect to the 5V/500mA DC power adapter.
② HDMI Output	Connect to a HDMI display device.
③ IR In	Connect the IR receiver extension cable to ensure that the remote control used is within the range of the IR receiving device.
④ Reset button	Press the button to restart the device.
⑤ RJ45 signal output	Input modulated HDMI signal.
⑥ Signal Indicator	No HDMI signal is transmitted, the indicator flashes. HDMI signal is transmitted, the indicator stays on.

Contact Information

Corporate Headquarters

12979 Arroyo Ave
San Fernando, CA 91340 - USA

Office: +1 (818) 727-7000
Fax: +1 (818) 875-0002
Email: info@Rocstor.com

Technical Support / RMA

Hours: 9:00 am - 5:00 pm PST
Mon - Fri (excluding holidays)

Tell: +1 (818) 727-7000 (DOM/INTL)
Fax: +1 (818) 875-0002
Email: support@Rocstor.com

Sales Info

Hours: 8:00 am - 5:00 pm PST
Mon - Fri (excluding holidays)

Tell: +1 (818) 727-7000 (DOM/INTL)
Fax: +1 (818) 875-0002
Email: support@Rocstor.com

Corporate, Government and Academic Customers

Our Corporate Sales Team's goal is to help our U.S.A. and Canadian customers find a storage solution that best serves their needs. We will help you determine your best purchasing options. For more information please contact the appropriate department below or call us at +1 (818) 727-7000.

General sales information: sales@Rocstor.com
Corporate sales information: corporate_sales@Rocstor.com
Educational sales information: academic_sales@Rocstor.com
Federal, State & Local government sales information: government_sales@Rocstor.com

Resellers/Business Development/OEM Partners

All Channel National and International Resellers, VARs, Consultants ...
contact Rocstor Channel Sales: call: +1 (818) 727-7000
Email: reseller_info@Rocstor.com

Disclaimer

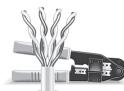
©2023 Rocstroge, Inc. Rocstor is registered trademark of Rocstorage, Inc. The terms HDMI, HDMI High-Definition Multimedia Interface, HDMI Trade dress and the HDMI Logos are trademarks or registered trademarks of HDMI Licensing Administrator, Inc. The product name and brand name may be registered trademark of related manufactures.™ and ® may be omitted on the user manual. The pictures in this user manual are just for reference. We reserve the rights to make changes without further notice to a product or system described herein to improve reliability, function or design.

Installation Procedures

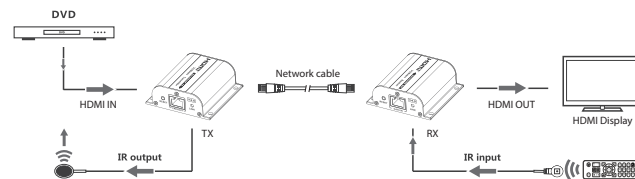
1. The network cable should follow the standard of IEEE-568B. It is recommended to select a network cable with less loss and crosstalk.

1-Orange/white
2-Orange
3-Green/white
4-Blue

5-Blue/white
6-Green
7-Brown/white
8-Brown



2. Connection



3. Connection instruction

- 1) Connect the HDMI port of the source device to the HDMI IN port of the transmitter via an HDMI cable.
- 2) Connect the CAT6 OUT port of the transmitter and the CAT6 IN port of the receiver via a network cable.
- 3) Connect the HDMI port of the display device to the HDMI OUT port of the receiver via an HDMI cable.
- 4) Connect the IR blaster extension cable to the IR OUT port of the transmitter, connect the IR receiver extension cable to the IR IN port of the receiver.
- 5) Plug the power into the devices to get started.

FAQ

Q: Why there is no image/image or sound is not played smoothly?

A: Press the "RESET" button of the receiver to restart the device. Reconnect the devices with a shorter network cable

Q: Why does the signal indicator "LINK" always flashes?

- A: 1) Check whether the network cable is uses IEEE-568B wiring standards.
2) Check whether the source device and the transmitter are connected well.
3) Reset the transmitter or receiver and connect it again.

Q: Why does the receiver's signal indicator "LINK" stays on but there is no image output?

- A: 1) Press the "RESET" button of the receiver to restart the device.
2) Check whether the display device and the receiver are connected well.
3) Reconnect the network cable or re-power the receiver.

Specification

Items		Specification
Power Supply	Voltage/Current	DC5V/500mA
	Power consumption	TX<1.5W ; RX<1.5W
HDMI Performance And Interface	HDMI compliance	HDMI 1.4
	HDCP compliance	HDCP 1.4
	HDMI resolution	800x600、1024x768、1280x720、1280x960、1366x768、1440x900、1680x1050、1920x1080、480i@60Hz、480p@60Hz、576i@50Hz、576p@50Hz、720p@50/60Hz、1080i@50/60Hz、1080p@24/25/30/50/60Hz、3840x2160@24/25/30Hz
	Audio formats	DTS、DTS-HD、PCM、LPCM
	HDR	Support
	EDID through	Support
	IR Pass-back	Frequency Range : 20~60KHz
	Input and output TMDS signal	0.7~1.2Vp-p(TMDS)
Input and output DDC signal	5Vp-p(TTL)	
Transmission Distance	Cat6/6A/7	1080p@60Hz transmission 70 meters 4K@30Hz transmission 40 meters
Protection Level	Electrostatic protection of the whole machine	Implementation of the standard: IEC61000-4-2 1a Contact discharge level 2 (±4KV) 1b Air discharge level 3 (±8KV)
Operating Environment	Working temperature	-20~60
	Storage temperature	-30~70
	Humidity (no condensation)	0~90%RH
Body Properties	Dimension	71.6(W) x 66.6(D) x 24.8(H) mm
	Weight	TX: 85g RX: 85g
	Color	Black