

PHILIPS

Soundbar Speaker

7000 Series

TAB7305

User manual



Register your product and get support at :
www.philips.com/support

Contents

1 Important	2	4 Use your Soundbar	12
Help and support	2	Turn ON and OFF	12
Important Safety instructions	2	Select Modes	12
Care for your product	3	Select Equalizer (EQ) Effect	12
Care of the environment	3	Adjust the Volume	13
Compliance	4	Bluetooth Operation	13
Caution FCC and IC Statement for Users (USA and Canada only)	4	USB Operation	14
What's in the Box	5		

2 Your Soundbar	6	5 Wall mount	14
Main unit	6		
Wireless subwoofer	6	6 Product specifications	15
Connectors	7		
Remote control	7	7 Troubleshooting	16
Prepare the remote control	8		

3 Connect	9		
Placement	9		
Connect audio from TV and other devices	10		
Connect to HDMI (ARC) Socket	10		
Connect to Optical Socket	10		
Connect to AUX Socket	10		
Connect to Power	11		
Pair up with the subwoofer	11		
Automatic pairing	11		
Manual pairing	11		

1 Important

Read and understand all instructions before you use your product. If damage is caused by failure to follow instructions, the warranty does not apply.

Help and support

For extensive online support, visit www.philips.com/support to:

- download the user manual and the quick start guide
- watch video tutorials (available only for selected models)
- find answers to frequently answered questions (FAQs)
- email us a question
- chat with our support representative.

Follow the instructions on the website to select your language, and then enter your product model number.

Alternatively, you can contact Consumer Care in your country. Before you contact, note down the model number and serial number of your product. You can find this information on the back or bottom of your product.

Important safety instructions

- **Read these instructions.**
- **Keep these instructions.**
- **Heed all warnings.**
- **Follow all instructions.**
- **Do not use this apparatus near water.**
- **Clean only with dry cloth.**
- **Do not block any ventilation openings. Install in accordance with the manufacturer's instructions.**
- **Do not install near any heat sources** such as radiators, heat registers, stoves, or other apparatus (including amplifiers) that produce heat.
- **Do not defeat the safety**

purpose of the polarized or grounding-type plug.

A polarized plug has two blades with one wider than the other. A grounding type plug has two blades and a third grounding prong. The wide blade or the third prong are provided for your safety. If the provided plug does not fit into your outlet, consult an electrician for replacement of the obsolete outlet.

- **Protect the power cord** from being walked on or pinched, particularly at plugs, convenience receptacles, and the point where they exit from the apparatus.
- **Only use attachments/accessories** specified by the manufacturer.
- **Use only with the cart,**



stand, tripod, bracket or table specified by the manufacturer or sold with the apparatus. When a cart is used, use caution when moving the cart/apparatus combination to avoid injury from tip-over.

- **Unplug this apparatus** during lightning storm or when unused for long periods of time.
- **Refer all servicing** to qualified service personnel. Servicing is required when the apparatus has been damaged in any way, such as power-supply cord or plug is damaged, liquid has been spilled or objects have fallen into the apparatus, the apparatus has been exposed to rain or moisture, does not operate normally, or has been dropped.
- **Battery usage CAUTION** - To prevent battery leakage which may result in bodily injury, property damage, or damage to the unit:
 - Install **all** batteries correctly, + and - as marked on the unit.
 - Do not mix batteries (**old and new** or **carbon and alkaline**, etc.).
 - Remove batteries when the unit is not used for a long time.
 - The batteries shall not be exposed to excessive heat such as sunshine, fire or the like.

- Perchlorate Material - special handling may apply. See www.dtsc.ca.gov/hazardouswaste/perchlorate.
- The product/remote control may contain a coin/button type battery, which can be swallowed. Keep the battery out of reach of children at all times! If swallowed, the battery can cause serious injury or death. Severe internal burns can occur within two hours of ingestion.
- If you suspect that a battery has been swallowed or placed inside any part of the body, seek immediate medical attention.
- When you change the batteries, always keep all new and used batteries out of reach of children. Ensure that the battery compartment is completely secure after you replace the battery.
- If the battery compartment cannot be completely secured, discontinue use of the product. Keep out of reach of children and contact the manufacturer.
- **Apparatus shall not be exposed to dripping or splashing.**
- **Do not place any sources of danger on the apparatus** (for example, liquid filled objects, lighted candles).
- This apparatus may contain lead and mercury. Dispose according to local, State or Federal laws. For disposal or recycling information, please contact your local authorities. For additional assistance on recycling options, please contact www.mygreenelectronics.com or www.eiae.org or www.recycle.philips.com.
- Where the MAINS plug or an appliance coupler is used as the disconnect device, the disconnect device shall remain readily operable.
- Do not place this apparatus on the furniture that is capable of being tilted by a child and an adult leaning, pulling, standing or climbing on it. A falling apparatus can cause serious injury or even death.
- This apparatus should not be placed in a built-in installation such as a bookcase or

rack unless proper ventilation is provided. Make sure to leave a space of 7.8 inches (20cm) or more around this apparatus.

Class II equipment symbol



This symbol indicates that the unit has a double insulation system.

Know these safety symbols



This 'bolt of lightning' indicates uninsulated material within your unit may cause an electrical shock. For the safety of everyone in your household, please do not remove product covering.



The 'exclamation point' calls attention to features for which you should read the enclosed literature closely to prevent operating and maintenance problems.

WARNING: To reduce the risk of fire or electric shock, this apparatus should not be exposed to rain or moisture and objects filled with liquids, such as vases, should not be placed on this apparatus.

CAUTION: To prevent electric shock, match wide blade of plug to wide slot, fully insert.

Care for your product

Use only microfiber cloth to clean the product.

Care of the environment

Disposal of your old product and battery



Your product is designed and manufactured with high quality materials and components, which can be recycled and reused.



This symbol on a product means that the product is covered by European Directive 2012/19/EU.



This symbol means that the product contains batteries covered by European Directive 2013/56/EU which cannot be disposed of with normal household waste.

Inform yourself about the local separate collection system for electrical and electronic products and batteries. Follow local rules and never dispose of the product and batteries with normal household waste. Correct disposal of old products and batteries helps prevent negative consequences for the environment and human health.

Removing the disposable batteries

To remove the disposable batteries, see battery installation section.

Compliance

This product complies with the radio interference requirements of the European Community.

Hereby, TP Vision Europe B.V. declares that this product is in compliance with the essential requirements and other relevant provisions of Directive 2014/53/EU. You can find the Declaration of Conformity on www.p4c.philips.com

Caution FCC and IC Statement for Users (USA and Canada only)

English

FCC Statement :

NOTE: This equipment has been tested and found to comply with the limits for a Class B digital device, pursuant to Part 15 of the FCC Rules. These limits are designed to provide reasonable protection against harmful interference in a residential installation. This equipment generates, uses and can radiate radio frequency energy and, if not installed and used in accordance with the instructions, may cause harmful interference to radio communications.

However, there is no guarantee that interference will not occur in a particular installation. If this equipment does cause harmful interference to radio or television reception, which can be determined by turning the equipment off and on, the user is encouraged to try to correct the interference by one or more of the following measures:

- Reorient or relocate the receiving antenna.
- Increase the separation between the equipment and receiver.
- Connect the equipment into an outlet on a circuit different from that to which the receiver is connected.
- Consult the dealer or an experienced radio / TV technician for help.

This device complies with Part 15 of the FCC Rules. Operation is subject to the following two conditions:

- (1) this device may not cause harmful interference, and
- (2) this device must accept any interference received, including interference that may cause undesired operation.

IC-Canada : CAN IECES-3(B)/NMB-3(B)

This device contains licence-exempt transmitter(s)/ receiver(s) that comply with Innovation, Science and Economic Development Canada's licence-exempt RSS(s).

Operation is subject to the following two conditions:

- (1) This device may not cause interference.
- (2) This device must accept any interference, including interference that may cause undesired operation of the device.

FCC & IC Warning:

- Changes or modifications to this unit not expressly approved by the party responsible for compliance could void the user's authority to operate the equipment.
- This equipment should be installed and operated with minimum distance 20cm between the radiator & your body.

Français

Déclaration de la FCC :

Remarque: cet équipement a été soumis à des essais et a été déclaré conforme aux limites stipulées pour un appareil numérique de classe B, conformément aux spécifications de la partie 15 du règlement de la FCC. Ces limites ont pour but d'assurer une protection raisonnable contre le brouillage nuisible dans une installation résidentielle. Cet équipement produit, utilise et peut émettre de l'énergie en radio fréquence et, s'il n'est pas installé et utilisé conformément aux directives, il peut causer un brouillage nuisible dans les communications radio.

Cependant, il est impossible de garantir qu'aucun brouillage ne se produira dans une installation particulière. Si cet équipement cause un brouillage de la réception de radio ou de télévision, ce qu'il est possible de déterminer en éteignant puis en rallumant l'équipement, l'utilisateur est prié d'essayer de corriger le brouillage au moyen de l'une ou de plusieurs des mesures suivantes :

- Réorienter ou déplacer l'antenne de réception.
- Augmenter la distance entre l'appareil et le récepteur.
- Brancher l'appareil à une prise sur un circuit différent de celui sur lequel le récepteur est branché.
- Consulter le revendeur ou un technicien radio/TV expérimenté.

Cet appareil est conforme à la partie 15 des règles de la FCC. Son fonctionnement est soumis aux deux conditions suivantes :

- (1) ce dispositif ne peut pas causer d'interférences nuisibles et
- (2) cet appareil doit accepter toute interférence reçue, y compris les interférences qui peuvent causer un mauvais fonctionnement.

IC-Canada : CAN IECES-3(B)/NMB-3(B)

L'émetteur/récepteur exempt de licence contenu dans le présent appareil est conforme aux CNR d'Innovation, Sciences et Développement économique Canada applicables aux appareils radio exempts de licence. L'exploitation est autorisée aux deux conditions suivantes :

- 1) L'appareil ne doit pas produire de brouillage;
- 2) L'appareil doit accepter tout brouillage radioélectrique subi, même si le brouillage est susceptible d'en compromettre le fonctionnement.

FCC & IC Avertissement :

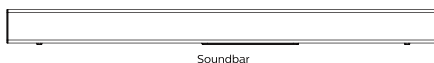
- Les changements ou modifications de cet appareil non expressément approuvées par la partie responsable de la conformité pourraient annuler l'autorisation de l'utilisateur à utiliser l'équipement.

- Pour rester en conformité avec les consignes d'exposition aux RF, placez le produit à au moins 20 cm des personnes proches.

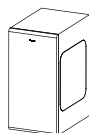
What's in the Box

Check and identify the items in the package:

- Soundbar × 1
- Wireless Subwoofer × 1
- Remote Control × 1
- Power Cord (for Subwoofer) * × 1
- Power Cord (for Soundbar) * × 1
- Wall Mount kit × 1
(Wall Brackets x2, Screws x2, Dowels x2)
- Quick Start Guide / Worldwide Warranty/
Safety Sheet × 1



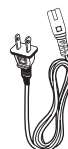
Soundbar



Wireless Subwoofer



Remote Control



Power Cord 2X



Screws/
Gum Cover



Wall bracket



Worldwide Warranty



Quick start guide



Safety Sheet

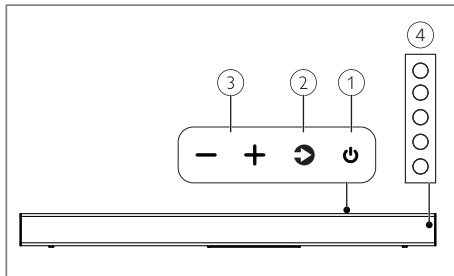
* Power cord quantity and plug type vary by regions.

2 Your Soundbar

Congratulations on your purchase, and welcome to Philips! To fully benefit from the support that Philips offers, register your Soundbar at www.philips.com/welcome.

Main unit

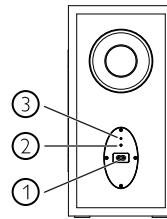
This section includes an overview of the main unit.



- ① **POWER**
Switch the Soundbar on or off.
- ② **SOURCE**
Selects an input source for the Soundbar.
- ③ **VOL +/-**
Increase/Decrease the volume.
- ④ **LED indicators**

Wireless subwoofer

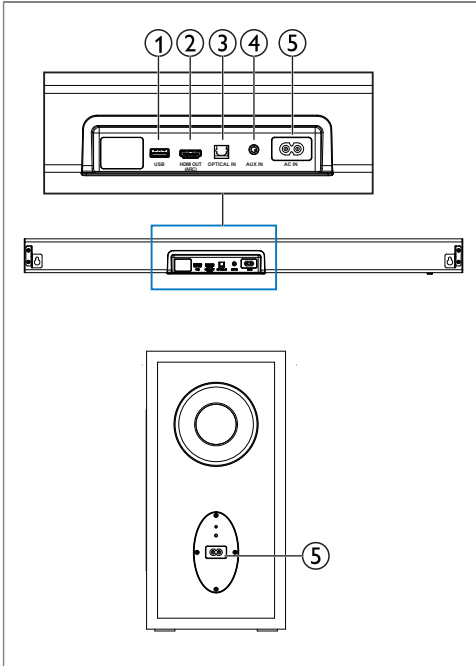
This section includes an overview of the wireless subwoofer.



- ① **AC~Socket**
Connect to the power supply.
- ② **Pair Button**
Press to enter the pairing mode for the subwoofer.
- ③ **Subwoofer Indicator**
 - When the power is turned on, the indicator lights up.
 - During wireless pairing between the subwoofer and the main unit, the LED indicator blinks amber slowly.
 - When the pairing succeeds, the indicator grows solid.
 - When the pairing fails, the indicator blinks amber quickly.
 - When the main unit shut down or enter standby mode, the LED indicator is off.

Connectors

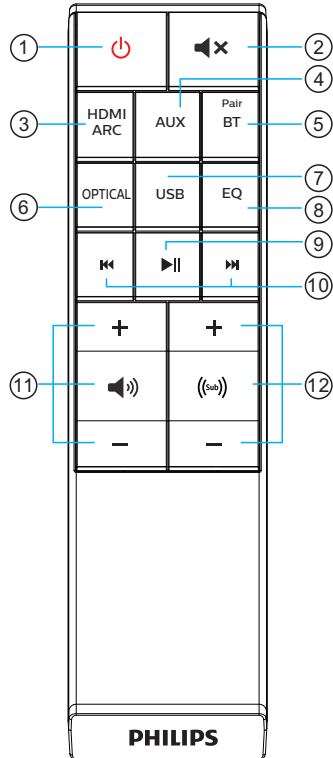
This section includes an overview of the connectors available on your Soundbar and Subwoofer.



- ① **USB**
Audio input from a USB storage device .
- ② **HDMI OUT (ARC)**
Connect to the HDMI input on the TV .
- ③ **OPTICAL**
Connect to an optical audio output on the TV or a digital device .
- ④ **AUX**
Audio input from external device such as TV, MP3 player, mobile phone, tablet, etc .
- ⑤ **AC~Socket**
Connect to the power supply .

Remote control

This section includes an overview of the remote control.



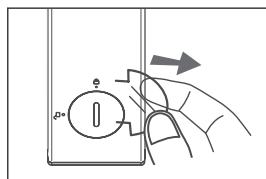
- ① **⏻ (POWER)**
Switch the Soundbar on or off.
- ② **🔇 (MUTE)**
Mute or restore volume.
- ③ **HDMI ARC**
Switch your source to HDMI ARC connection.
- ④ **AUX**
Switch your audio source to the AUX connection (3.5mm jack).
- ⑤ **Pair/BT**
Switch to Bluetooth mode. Press and hold to activate the pairing function in Bluetooth mode or disconnect the existing paired Bluetooth device.
- ⑥ **OPTICAL**
Switch your audio source to the optical connection.
- ⑦ **USB**
Switch to USB mode.
- ⑧ **EQ**
Select Equalizer (EQ) effect.
- ⑨ **▶|| (PLAY/PAUSE)**
Start, pause or resume play in BT/USB mode.
- ⑩ **⏮ ⏭ (PREVIOUS/NEXT)**
Skip to the previous or next track in BT/USB mode.
- ⑪ **🔊 VOL +/- (Soundbar's Volume)**
Increase or decrease volume.
- ⑫ **(🔊) +/- (Subwoofer's Volume)**
Increase or decrease the subwoofer's volume.

Prepare the Remote control

- The provided Remote Control allows the unit to be operated from a distance.
- Even if the Remote Control is operated within the effective range 19.7 feet (6m), remote control operation may be impossible if there are any obstacles between the unit and the remote control.
- If the Remote Control is operated near other products which generate infra-red rays, or if other remote control devices using infra-red rays are used near the unit, it may operate incorrectly. Conversely, the other products may operate incorrectly.



First-time use :

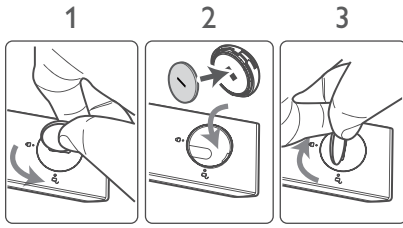
The unit has a pre-installed lithium battery. Remove the protective tab to activate the remote control battery.



Replace the Remote Control Battery

The remote control requires a 3V CR2025 Lithium battery.

- 1 Use tools (such as coin batteries/coins) to catch the groove of the battery box cover and turn counter-clockwise to  (unlock).
- 2 Remove the old battery, which is located in the lid, place the new Cr2025 battery and pay attention to the correct polarity (+/-).
- 3 Use the tools to catch the groove of the battery compartment cover and turn clockwise to  (lock), secure it into the remote control.



Precautions Concerning Battery

- When the Remote Control is not to be used for a long time (more than a month), remove the battery from the Remote Control to prevent it from leaking.
- If the batteries leak, wipe away the leakage inside the battery compartment and replace the batteries with new ones.
- Do not use any batteries other than those specified.
- Do not heat or disassemble batteries.
- Never throw them in fire or water.
- Do not carry or store batteries with other metallic objects. Doing so could cause batteries to short circuit, leak or explode.
- Never recharge a battery unless it is confirmed to be a rechargeable type.

3 Connect

This section helps you connect your Soundbar to a TV and other devices.

For information about the basic connections of your Soundbar and accessories, see the quick start guide.

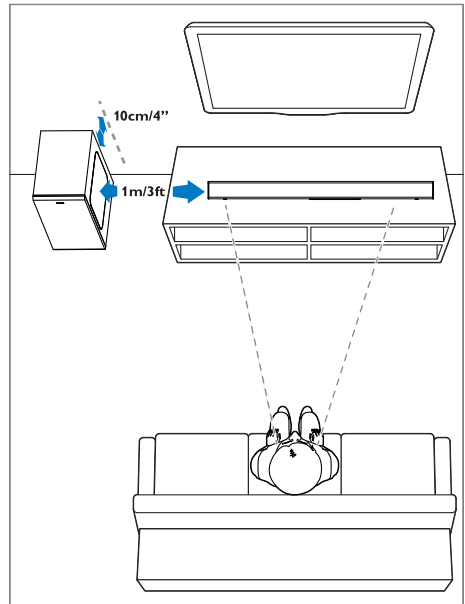
Note

- For identification and supply ratings, refer to the type plate at the back or bottom of the product.
- Before you make or change any connections, make sure that all devices are disconnected from the power outlet.

Placement

Place the subwoofer at least 1 meter (3 feet) away from your Soundbar, and ten centimeters away from the wall.

For best results, place your subwoofer as shown below.

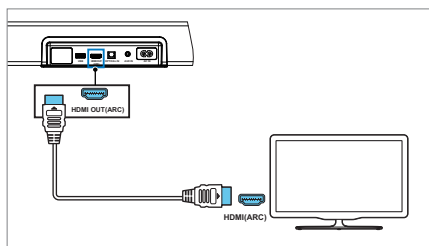


Connect audio from TV and other devices

Connect to HDMI (ARC) Socket

Some 4K HDR TVs require the HDMI input or picture settings to be set for HDR content reception. For further setup details on HDR display, please refer to the instruction manual of your TV.

Your Soundbar supports HDMI with Audio Return Channel (ARC). If your TV is HDMI ARC compliant, you can hear the TV audio through your Soundbar by using a single HDMI cable.

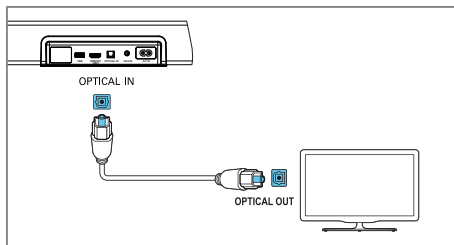


1. Using a High Speed HDMI cable (not included), connect the **HDMI OUT (ARC)** connector on your Soundbar to the **HDMI ARC** connector on the TV. The HDMI ARC connector on the TV might be labeled differently. For details, see the TV user manual.
2. On your TV, turn on HDMI-CEC operations. For details, see the TV user manual.

Note

1. Your TV must support the HDMI-CEC and ARC function. HDMI-CEC and ARC must be set to On.
2. The setting method of HDMI-CEC and ARC may differ depending on the TV. For details about ARC function, please refer to your TV owner's manual.
3. Only HDMI 1.4 compatible cables can support the ARC function.

Connect to Optical Socket

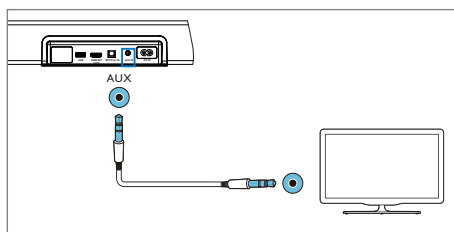


Using an optical cable(not included), connect the **OPTICAL** connector on your Soundbar to the **OPTICAL OUT** connector on the TV or other devices.

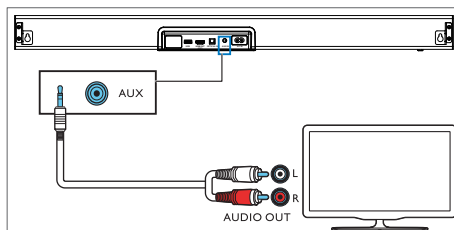
- The digital optical connector might be labeled **SPDIF** or **SPDIF OUT**.

Connect to AUX Socket

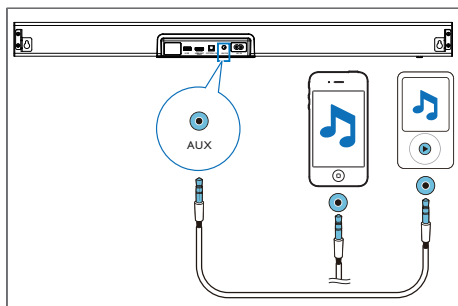
- Use a 3.5mm to 3.5mm audio cable (not included) to connect the TV's headphone socket to the **AUX** socket on the unit.



- Use a **RCA to 3.5mm** audio cable (not included) to connect the TV's audio output sockets to the **AUX** socket on the unit.



- Use a **3.5mm to 3.5mm** audio cable (not included) to connect external devices such as a MP3 player, mobile phone or tablet, etc.



Connect to Power

- Before connecting the AC power cord, ensure you have completed all other connections.
- Risk of product damage! Ensure that the power supply voltage corresponds to the voltage printed on the back or the underside of the unit.
- Connect the mains cable to the AC~Socket of the unit and then into a mains socket.
- Connect the mains cable to the AC~Socket of the subwoofer and then into a mains socket.
- Power cord quantity and plug type vary by regions.

Pair up with the subwoofer

Automatic Pairing

Plug the Soundbar and the subwoofer into the mains sockets and then press on the unit or remote control to switch the unit to **On** mode. The subwoofer and Soundbar will automatically pair.



Tips

Do not press **Pair** on the rear of the subwoofer, except for manual pairing.

Manual Pairing

If no audio from the wireless subwoofer can be heard, manually pair up the subwoofer.

1. Press and hold the **Source & Vol-** on the Soundbar simultaneously, and then press and hold **Pair** on the subwoofer.
 - ↳ The AUX/USB indicator on the Soundbar and the **Pair** indicator on subwoofer will blink slowly. The subwoofer will be paired successfully in about 2 seconds.
2. The AUX/USB Indicator goes off, the pairing LED indicator of subwoofer grows constant when successful.
3. If manual pairing failed and the **Pair** indicator still keeps blinking, repeat step 1.



Tips

- The subwoofer should be within 6 m of the Soundbar in an open area (the closer the better).
- Remove any objects between the subwoofer and the Soundbar.
- If the wireless connection fails again, check if there is a conflict or strong interference (e. g. interference from an electronic device) around the location. Remove these conflicts or strong interferences and repeat the above procedures.

4 Use your Soundbar

This section helps you use the Soundbar to play audio from connected devices.


Before you start

- Make the necessary connections described in the quick start guide and the user manual.
- Switch the Soundbar to the correct source for other devices.

Turn ON and OFF

- When you first connect the unit to the main socket, the unit will be in STANDBY mode. The STANDBY indicator will light up red.

Standby ON

System state	Standby On
Indicator Activity	

- Press the **⏻ (POWER)** button on the unit or the remote control to switch the main unit ON or OFF.
- Press **⏮ (SOURCE)** button once on the unit or press any Source button once on the remote control also can wake up the main unit.
- Disconnect the main plug from the main socket if you want to switch the unit off completely.

Auto Standby

The unit automatically turns to Standby mode after about 15 minutes if the TV or the external unit is disconnected, switched off.

- To switch the unit off completely, remove the mains plug from the mains socket.






- Please turn the unit off completely to save energy when not in use.

Select Modes

1. Press the **⏮ (Source)** button repeatedly on the unit or press corresponding button on the remote control to select the **AUX, OPTICAL, HDMI ARC, BT, USB** mode.
2. The indicator light on the Soundbar will show which mode is currently in use.



Input Source

System state	AUX	USB	BT	OPTICAL	HDMI ARC
Indicator Activity					




Select Equalizer (EQ) Effect

Select predefined sound modes to suit your video or music.

Press the **EQ** button on the remote control to select your desired preset equalizer effects:

↳ LEDs blink for 3 sec to show current EQ mode according to the EQ mode definition.

Equalizer (EQ)

System state	Movie	Music	News
Indicator Activity			

Movie/Music/News

- **Movie** -for viewing movies
- **Music** -for listening to music
- **News** -for listening to news

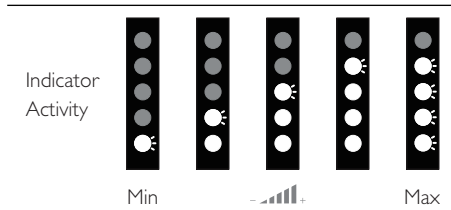
Adjust the Volume

Press **Vol+/Vol-(Volume)** to increase or decrease a volume level.

- To mute sound, press **Mute**.
- To restore the sound, press any buttons or perform any operations.



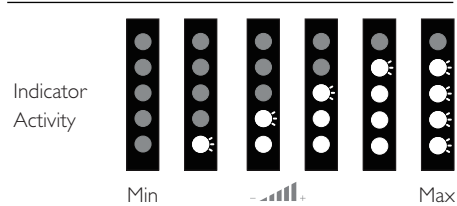
Soundbar's Volume



Adjust the Subwoofer's Volume

Press the **(⏮) +/-** button to adjust the subwoofer volume.

Subwoofer's Volume



Bluetooth Operation

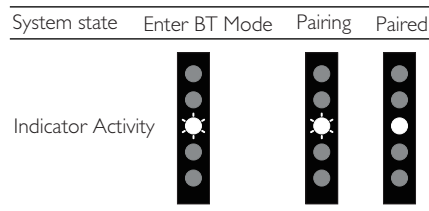
Through Bluetooth, connect the Soundbar with your Bluetooth device (such as an iPad, iPhone, iPod touch, Android phone, or laptop), and then you can listen to the audio files stored on the device through your Soundbar speakers.

What you need

- A Bluetooth device which supports Bluetooth profile A2DP, AVRCP and with Bluetooth version as 4.2 + EDR.
- The maximum operational range between the Soundbar and a Bluetooth device is approximately 10 meters (30 feet).



Bluetooth Status

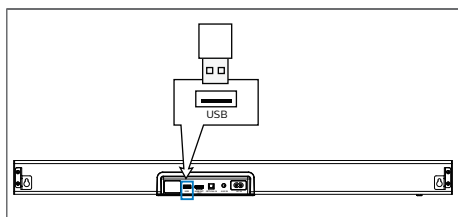


1. Press the **⏮** button repeatedly on the unit or press the **Pair/BT** button on the remote control to switch the Soundbar to Bluetooth mode.
 - ↳ The Soundbar's indicator blinks white.
2. Press and hold the **⏮** button on the unit or press and hold the **Pair/BT** button on the remote control to enter pairing mode. Press and hold **⏮ & +** (source & vol+), the previous paired devices will be cleared and the Soundbar re-enters pairing mode.
 - ↳ The Soundbar's indicator blinks white.
3. On the Bluetooth device, switch on Bluetooth, search for and select **Philips TAB7305** to start connection (see the user manual of the Bluetooth device on how to enable Bluetooth).

- 4.Wait until the Soundbar's indicator becomes solid white.
- 5.To exit Bluetooth, switch the unit to another source. When you switch back to Bluetooth mode, Bluetooth connection remains active.
- 6.If you want to connect to another device, press and hold the **↻** button on the soundbar or the **Pair/BT** button on the remote control to disconnect the current connected Bluetooth device and enter pairing mode.

USB Operation

You can play music files stored on a connected USB device.For playable types of files,see "supported audio formats "page 15.
Caution:USB Socket cannot charge to devices.



Factory default settings

When the unit is powered on, press and hold the **VOL + & VOL -** , the unit's all source LEDs lights up 5 seconds and reset the unit to factory default settings.

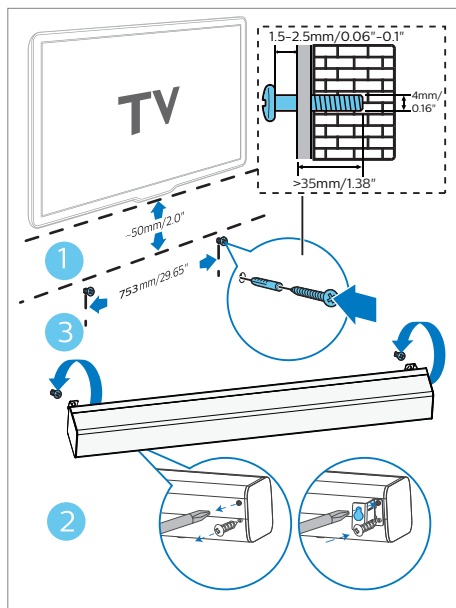
5 Wall mount

Note

- Improper wall mounting may result in accident, injury or damage. If you have any query, contact Consumer Care in your country.
- Before wall mounting, make sure the wall can support the weight of your Soundbar.

Screw length/diameter

Depending on the type of wall mounting your Soundbar, make sure that you use screws of a suitable length and diameter.



- (1) Drill two holes on the wall.
- (2) Secure the dowels and screws in the holes.
- (3) Hang the Soundbar on the fastening screws.

6 Product specifications



Note

- Specifications and design are subject to change without notice.

Amplifier

- Total output power: 300W, <10%THD
- Frequency Response: 45Hz~20KHz / -10dB
- Signal-to-noise ratio: >95dB(CCIR) / (A-weighted)
- Total Harmonic Distortion:<1%

Bluetooth /Wireless

- Bluetooth profile:A2DP,AVRCP
- Bluetooth version:4.2+EDR
- Frequency band/Output power: 2402MHZ ~ 2480 MHZ /6±2dBm

Main unit

- Power Supply:100-240V~ 50/60Hz
- Speakers Impedance:6Ω × 2 +6Ω × 2
- Dimension (W × D × H): 800 × 95 × 64.7 mm
- Weight:2.27KG
- Operating temperature:0°C - 40°C

Subwoofer

- Power Supply:100-240V~ 50/60Hz
- Speakers Impedance:2Ω
- Dimension (W × D × H): 190 × 280 × 380 mm
- Weight:7.57kg

Power Consumption

- Power Consumption for Soundbar:84W
- Power Consumption for Subwoofer:117W
- Standby Power Consumption:<2W

Remote control

- Distance/Angle:6m/30°
- Battery Type:CR2025

Supported Audio Format

HDMI ARC

- Dolby Digital,Dolby Digital Plus,LPCM 2ch

OPTICAL

- Dolby Digital, LPCM 2ch

BLUETOOTH

- SBC

USB

- MP3, WMA, WAV, OGG, FLAC



Note

- The unit may not be able to decode all digital audio formats from the input source. In this case, the unit will mute. This is NOT a defect. Ensure that the audio setting of the input source (e.g. TV, game console, DVD player, etc.) is set to PCM, Dolby Digital or Dolby Digital Plus (Refer to the user manual of the input source device for its audio setting details) with OPTICAL / HDMI input.

7 Troubleshooting



Warning

- Risk of electric shock. Never remove the casing of the product.

To keep the warranty valid, never try to repair the product yourself.

If you have problems using this product, check the following points before you request service. If you still have a problem, get support at www.philips.com/support.

Main unit

The buttons on the Soundbar do not work.

- Disconnect the Soundbar from the power supply for a few minutes, then reconnect.

Sound

No sound from Soundbar speakers.

- Connect the audio cable from your Soundbar to your TV or other devices.
- Reset your Soundbar to its factory settings.
- On the remote control, select the correct audio input.
- Make sure that the Soundbar is not muted.

Distorted sound or echo.

- If you play audio from the TV through the Soundbar, make sure that the TV is muted.

Bluetooth

A device cannot connect with the Soundbar.

- The device does not support the compatible profiles required for the Soundbar.
- You have not enabled the Bluetooth function of the device. See the user manual of the device on how to enable the function.
- The device is not correctly connected. Connect the device correctly. (see Bluetooth Operation on page 13)
- The Soundbar is already connected with another Bluetooth device. Disconnect the connected device, then try again.

Quality of audio play from a connected Bluetooth device is poor.

- The Bluetooth reception is poor. Move the device closer to the Soundbar, or remove any obstacle between the device and the Soundbar.

The connected Bluetooth device connects and disconnects constantly.

- The Bluetooth reception is poor. Move the device closer to the Soundbar, or remove any obstacle between the device and the Soundbar.
- For some Bluetooth, the Bluetooth connection can be deactivated automatically to save power. This does not indicate any malfunction of the Soundbar.



The Bluetooth® word mark and logos are registered trademarks owned by the Bluetooth SIG, Inc. and any use of such marks by MMD Hong Kong Holding Limited is under license. Other trademarks and trade names are those of their respective owners.

Manufactured under license from Dolby Laboratories. Dolby, Dolby Audio, and the double-D symbol are trademarks of Dolby Laboratories.

The Adopted Trademarks HDMI, HDMI High-Definition Multimedia Interface, and the HDMI Logo are trademarks or registered trademarks of HDMI Licensing Administrator, Inc. in the United States and other countries.

Specifications are subject to change without notice. Please visit <http://www.philips.com/support> for the latest updates and documents. Philips and Philips Shield Emblem are registered trademarks of Koninklijke Philips N.V. and are used under license. This product has been manufactured by and is sold under the responsibility of MMD Hong Kong Holding Limited, or one of its affiliates, and MMD Hong Kong Holding Limited, is the warrantor in relation to this product.

