

D3 PRO Battery-Powered Portable PA Speaker Array System

P/N 600064

User's Manual

SAFETY WARNINGS AND GUIDELINES

Please read this entire manual before using this device, paying extra attention to these safety warnings and guidelines. Please keep this manual in a safe place for future reference.

- Do not expose this device to water or moisture of any kind. Do not place drinks or other containers with moisture on or near the device. If moisture does get in or on the device, immediately remove it from its power source and allow it to fully dry before reapplying power.
- Do not touch the device, the power cord, or any other connected cables with wet hands.
- If operating this speaker in a humid environment, ensure that no condensation occurs. Condensation could cause damage to the speaker cone and could cause a short in the amplifier, which in turn could cause fire or severe electric shock.
- Do not expose this device to excessive vibration or extreme force, shock, or fluctuations in temperature or humidity.
- When installing this device, ensure that the mount is sufficiently robust to support the weight of the unit and to prevent unwanted movement.
- Do not stack these speakers in such a way that they could fall on people or animals if they were to become dislodged.
- Do not expose this device to excessively high temperatures. Do not place it in, on, or near a heat source, such as a fireplace, stove, radiator, etc. Do not leave it in direct sunlight.
- This device ventilates excessive heat through the slots and openings in the case. Do not block or cover these openings. Ensure that the device is in an open area where it can get sufficient airflow to keep from overheating.
- Do not place or install this device in an area where it can be exposed to excessive amounts of dust, humidity, oil, smoke, or combustible vapors.
- Use only in a well-ventilated area. Do not use in close, confined spaces.
- Prior to operation, check the unit and power cord for physical damage. Do not use if physical damage has occurred.
- Before plugging the unit into a power outlet, ensure that the outlet provides the same type and level of power required by the device.
- This device uses a grounded power cord and requires a ground connection for safe operation. Ensure that the power source has a proper ground connection. Do not modify the plug or use a "cheater" plug to bypass the ground connection.
- Unplug this device from the power source when not in use.
- Take care to prevent damage to the power cord. Do not allow it to become crimped, pinched, walked on, or become tangled with other cords. Ensure that the power cord does not present a tripping hazard.
- Never unplug the unit by pulling on the power cord. Always grasp the connector head or adapter body.
- Ensure that power is turned off and disconnected before making any electrical connections.
- This device contains a Lithium battery. Dispose of this device only in accordance with local, state, or federal regulations for electronic waste.
- Charge the battery before first use and at least once every three months to keep it fresh and capable of holding the full charge.
- Clean using a soft, dry cloth only. Do not use chemical cleaners, solvents, or detergents. For stubborn deposits, moisten the cloth with warm water.
- This device has no user serviceable parts. Do not attempt to open, service, or modify this device.

PACKAGE CONTENTS

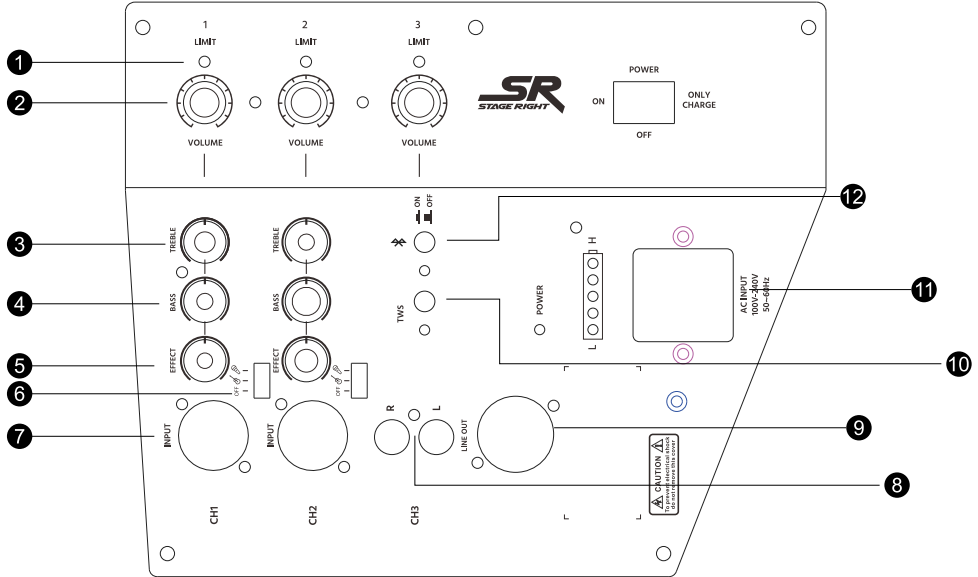
Please take an inventory of the package contents to ensure you have all the items listed below. If anything is missing or damaged, please contact Monoprice™ Customer Service for a replacement.


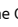
1x D3 PRO PA Speaker

1x AC Power Cord

1x User's Manual

PRODUCT OVERVIEW



1. **LIMIT:** The LED illuminates green when a signal is present. It illuminates red to indicate that the signal is clipping.
2. **VOLUME:** Adjusts the volume of your microphone, instrument, or audio source.
3. **TREBLE:** Boosts or cuts high frequency signals.
4. **BASS:** Boosts or cuts low frequency signals.
5. **EFFECT:** Adjusts the amount of reverb to apply to your microphone or instrument.
6. **INPUT SELECT:** Set the switch to the  position to select instrument level input sensitivity, the  position to select microphone level input sensitivity, or the OFF position to disable the input.
7. **INPUT:** Combination balanced XLR (microphone) and unbalanced 1/4" TS (instrument) input jack.
8. **R/L:** Unbalanced RCA jacks for connecting a line level source.
9. **LINE OUT:** Balanced XLR output jack for connecting a line level device, such as a mixer. The output is post mix.
10. **TWS:** Press the TWS button on two D3 PRO PA Speakers at the same time to pair them in a TrueWireless™ stereo configuration. You can then playback audio from a paired Bluetooth® device in stereo.
11. **AC INPUT:** IEC 60320 C14 panel connector for connecting the included AC power cord. This speaker can accept input power in the range 100 ~ 240 VAC, 50/60 Hz.
12. **BLUETOOTH:** Bluetooth® pairing button for pairing the PA speaker with a mobile device, such as a smartphone.

BLUETOOTH PAIRING

Perform the following steps to pair the speaker with your mobile device.

1. With the speaker powered on, press the **BLUETOOTH** button.
2. Open the Bluetooth® settings on your device and scan for nearby Bluetooth devices.
3. Locate and select the **Stage Right D3 PRO** entry. Your device will pair and connect to the speaker.

TRUEWIRELESS STEREO PAIRING

Perform the following steps to wirelessly pair two D3 PRO speakers together to form a stereo pair for TrueWireless™ Stereo playback.

1. With both speakers powered on, press the **TWS** button on each speaker. The speakers will automatically pair with each other.
2. Follow the instructions in the *BLUETOOTH PAIRING* section to pair your mobile device.

You can now stream stereo audio from your mobile device for true stereo playback.

ONLINE SUPPORT

Monoprice™ is pleased to provide free online support. For order related issues, contact the Customer Service department through the **Live Chat** link on our website www.monoprice.com or via email at support@monoprice.com

For technical issues, contact the Technical Support department through the online chat button on our website www.monoprice.com or by sending an email to tech@monoprice.com

Check the website for support times and links.

SPECIFICATIONS

P/N	600064
LF Driver	6.5" + 1" voice coil
HF Driver	3x 2.75" with neodymium magnet + 1" voice coil
Frequency Response	60Hz ~ 18kHz (-6dB)
Maximum SPL	114dB
Nominal Impedance	4 ohms
Amplifier Type	Class D with DSP
Power Output (RMS)	120 watts
Number of Channels	3
Number of Mic Preamps	2
EQ	2-band EQ
Effects	Reverb

Inputs	2x Combination 1/4" TS/XLR, 1x RCA pair, 1x Bluetooth®
Outputs	1x balanced XLR
Bluetooth®	Yes + TWS
Enclosure Material	Polypropylene
Mounting Options	35mm pole, tilt back, floor monitor, wall mount
Input Power	100 ~ 240 VAC, 50/60 Hz
Battery	Lithium-ion, 2600mAh, 24V
Battery Playback Time	Up to 6 hours
Dimensions	9.8" x 11.4" x 13.4" (25 x 29 x 34 cm)
Weight	16.4 lbs. (7.45 kg)

REGULATORY COMPLIANCE

Notice for FCC



This device complies with Part 15 of the FCC rules. Operation is subject to the following two conditions: (1) this device may not cause harmful interference, and (2) this device must accept any interference received, including interference that may cause undesired operation.

Modifying the equipment without Monoprice's authorization may result in the equipment no longer complying with FCC requirements for Class B digital devices. In that event, your right to use the equipment may be limited by FCC regulations, and you may be required to correct any interference to radio or television communications at your own expense.

This equipment has been tested and found to comply with the limits for a Class B digital device, pursuant to Part 15 of the FCC Rules. These limits are designed to provide reasonable protection against harmful interference in a residential installation. This equipment generates, uses and can radiate radio frequency energy and, if not installed and used in accordance with the instructions, may cause harmful interference to radio communications. However, there is no guarantee that interference will not occur in a particular installation. If this equipment does cause harmful interference to radio or television reception, which can be determined by turning the equipment off and on, the user is encouraged to try to correct the interference by one or more of the following measures:

- Reorient or relocate the receiving antenna.
- Increase the separation between the equipment and receiver.
- Connect the equipment into an outlet on a circuit different from that to which the receiver is connected.
- Consult the dealer or an experienced radio/TV technician for help.

Radio Notice for FCC

Caution

This FCC Part 15 radio device operates on a non-interference basis with other devices operating at this frequency. Any changes or modification to said product not expressly approved by Monoprice, including the use of non-approved antennas, could void the user's authority to operate this device.

This device complies with Part 15 of the FCC Rules. Operation is subject to the following two conditions: (1) this device may not cause harmful interference, and (2) this device must accept any interference received, including interference that may cause undesired operation.

FCC Radiation Exposure Statement

Caution

This equipment complies with radiation exposure limits set forth for an uncontrolled environment. End users must follow the specific operating instructions for satisfying RF exposure compliance. This transmitter must be at least 20 cm from the user and must not be collocated or operated in conjunction with any other antenna or transmitter.

Monoprice™, Stage Right™, the Stage Right logo, and all Monoprice logos are trademarks of Monoprice Inc.

The Bluetooth® word mark and logos are registered trademarks of Bluetooth SIG, Inc.

Qualcomm® is a trademark of Qualcomm Incorporated, registered in the United States and other countries. TrueWireless™ is a trademark of Qualcomm Technologies International, Ltd. Qualcomm® TrueWireless™ is a product of Qualcomm Technologies International, Ltd.