

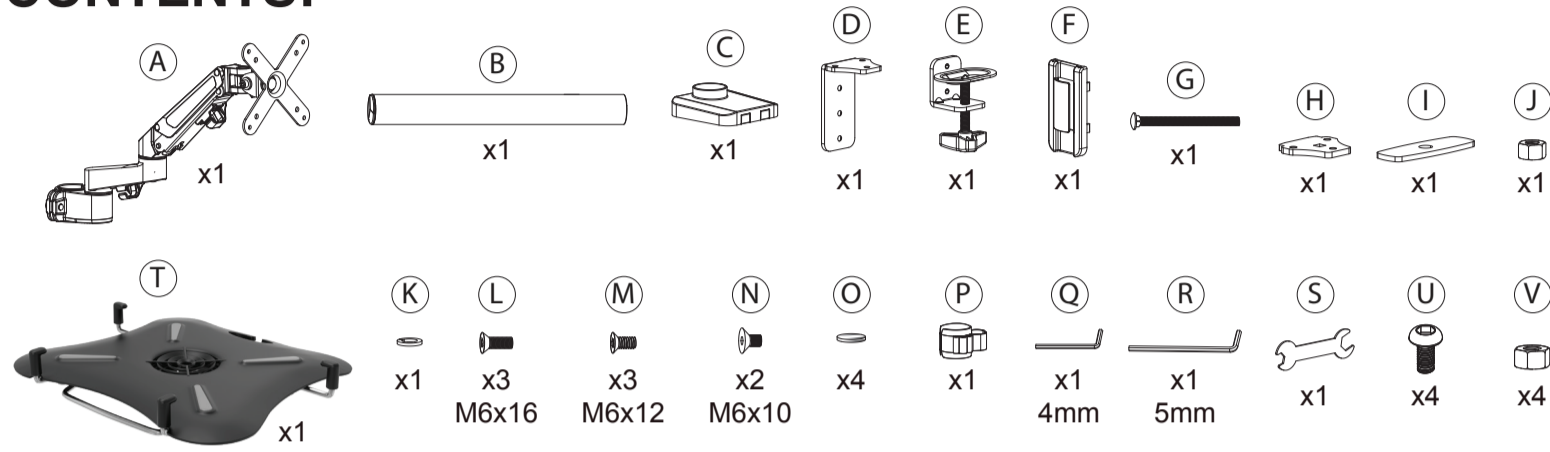


# Articulating Desk Mount Clamp for Laptops with Built-In Cooling Fan

LT-DMCGCF

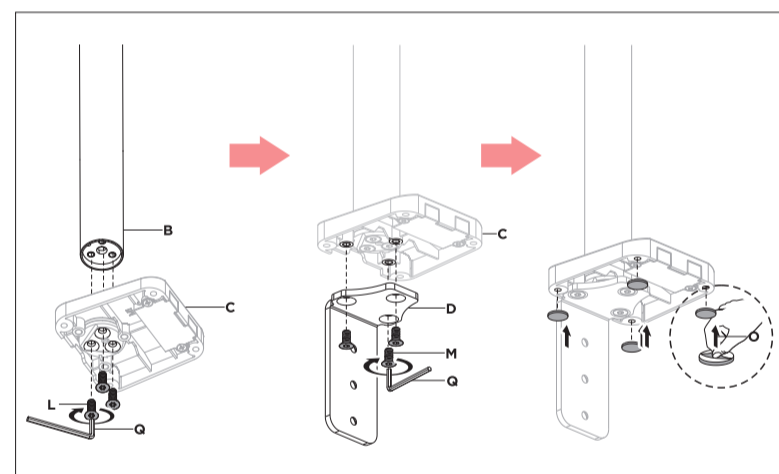
INSTALLATION - MANUAL

## CONTENTS:

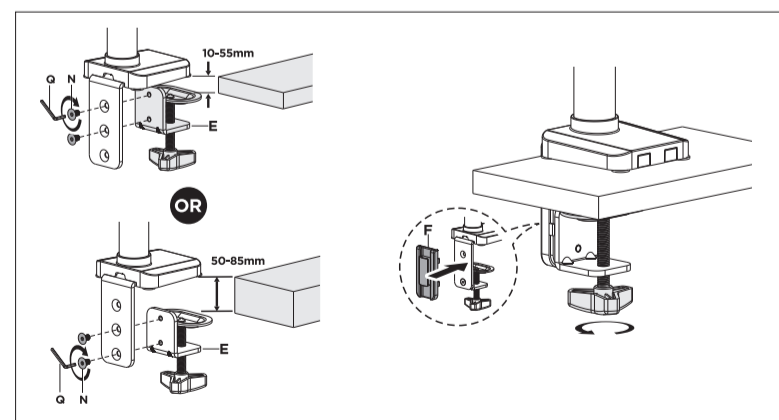


## INSTALLATION:

### 1A. Option 1. Clamp Mount Installation

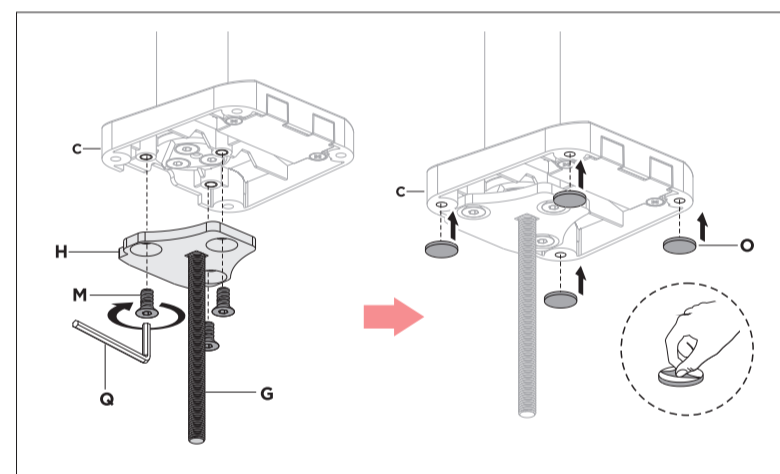


1AA. Rotate in the (3) screws (L) through the base (C) and pole (B) using the allen key tool (Q). Then, rotate in the (3) screws (M) through the component (D) and base (C). At last, adhere the (4) rubber pads (O) to the base (C) as shown by removing the covers.

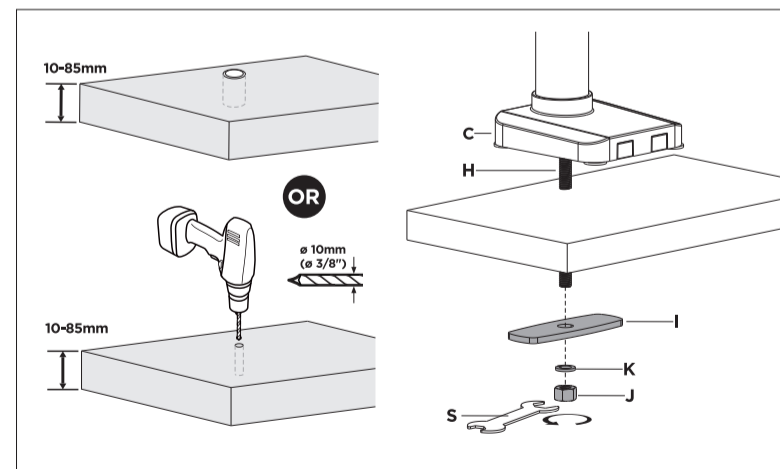


1AB. If clamping to a 10-55mm surface, rotate in the (2) screws (N) in the top holes of component (D) using the allen key tool (Q). If clamping to a 50-85mm surface, rotate in the (2) screws (N) in the bottom holes of component (D) using the allen key tool (Q). At last, attach the tool holder (F) to component (E) from the back to cover the holes as shown above.

### 1B. Option 2. Grommet Mount Installation

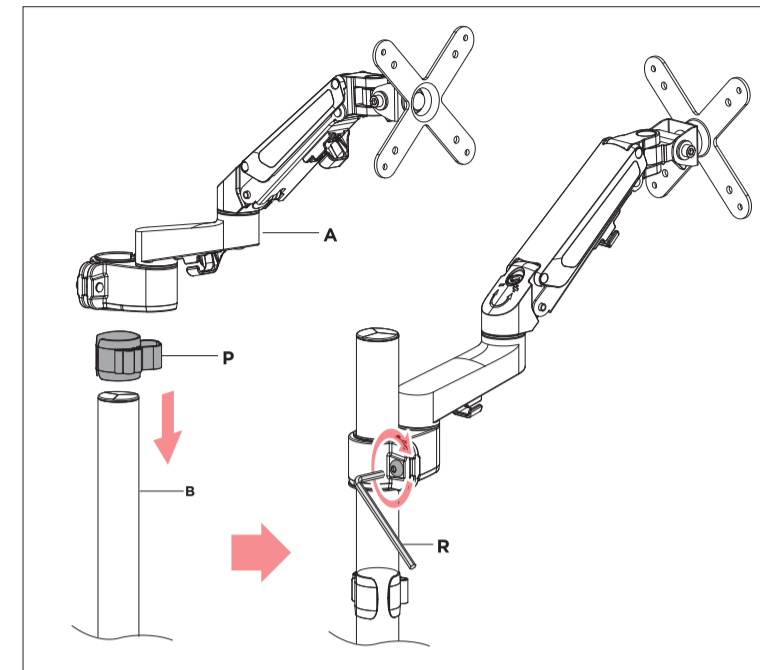


1BA. Rotate in the (3) screws (M) through the grommet component (H) and base (C) using the allen key tool (Q). Then, adhere the (4) rubber pads (O) to the base (C) as shown by removing the covers.



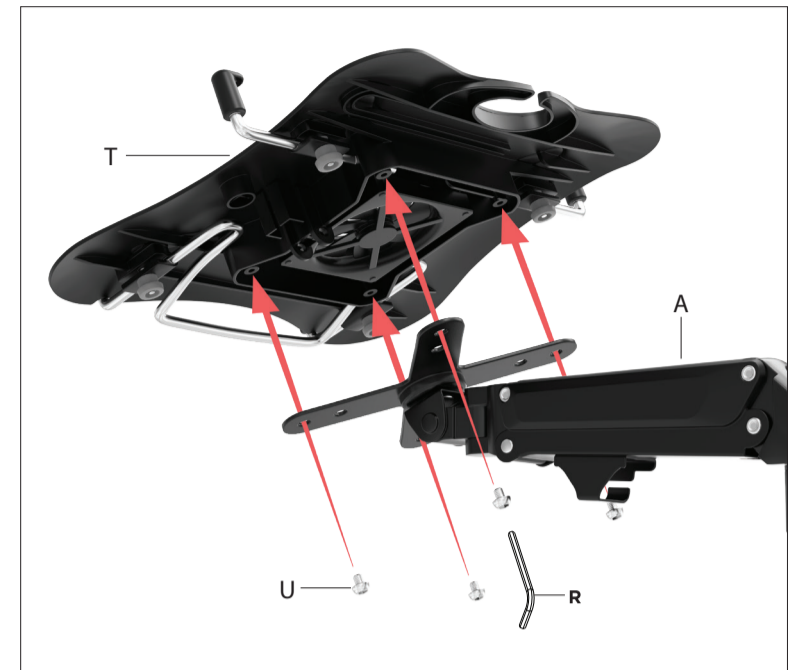
1BB. Use a pre-drilled surface or drill a hole on the surface as shown above. Insert the grommet component (H) inside the hole. Then, insert through the rod the component (I), then the washer (K) and at last the hex nut (J), and use the included wrench (S) to securely tighten the assembly to the desired surface.

## 2. Mounting Arm to Pole



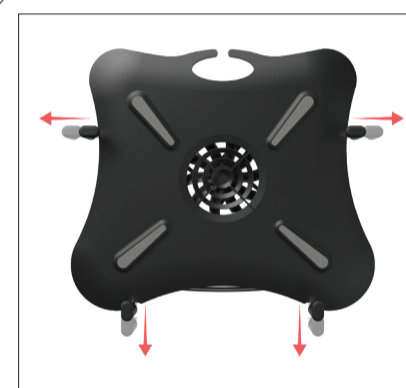
3A. Insert component (P) and (A) through the pole (B). Once in the desired position, rotate the hex screw on component (A) base using the included allen key tool (R) until securely tightened.

## 3. Mounting Laptop Holder to VESA Plate



3B. Install the laptop holder (T) to VESA plate (A) by aligning the holes and rotating in the provided screws (U) using the included allen key tool (H) as shown above.

## 4. How to Setup your Holder



4A. Extend the holder brackets.

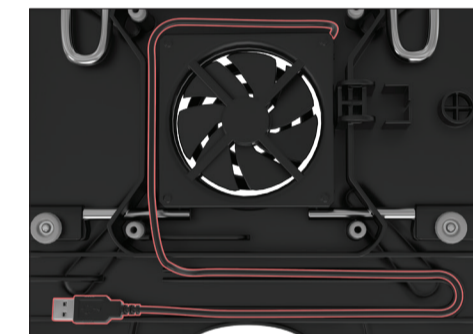


4B. Adjust the holder to your laptop by sliding the brackets towards it.

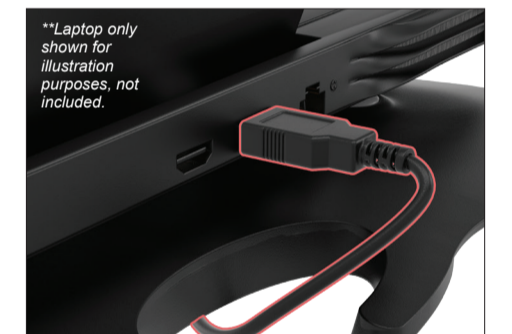


4C. Once laptop is securely in place, tighten four knobs as shown until securely fastened.

## 5. Powering Up Cooling Fan

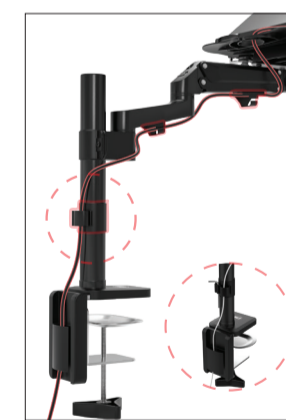


5A. Find the integral USB cable below.



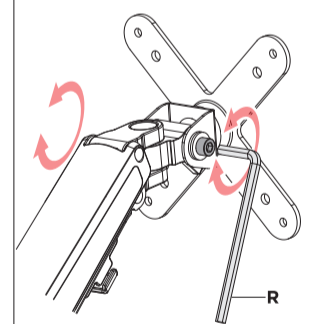
5B. Plug into your laptop for power.

### Cable Routing



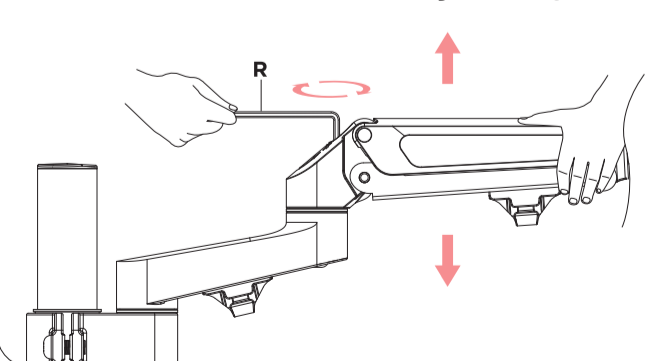
Using the provided clips, route the wire from your device to the power source as illustrated to the left.

### Adjusting Tilt



Adjust to the desired angle, then tighten the screws using the allen key (R) as shown, alternating from each screw as you tighten them.

### Adjusting Arm



To avoid damage to monitors or mount, always keep the arm in a horizontal position while making adjustments. Again, ask for assistance if required.

DO NOT over tighten the screws.

