



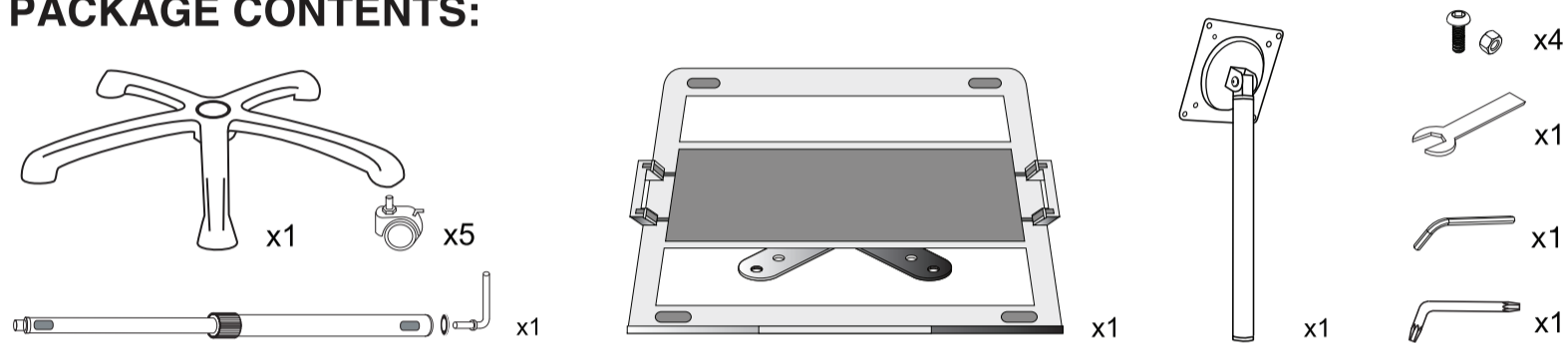
LT-RFL

Rolling Floor Stand with Laptop Mount

INSTRUCTION MANUAL

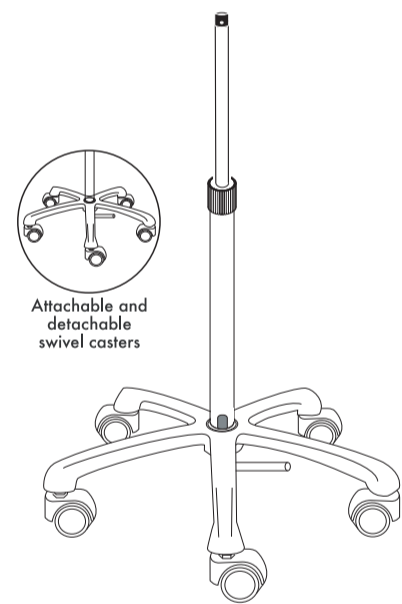
Thank you for choosing CTA Digital's product. We hope that you will enjoy using it. Please follow the guidelines and instructions as laid out in this instruction manual

PACKAGE CONTENTS:



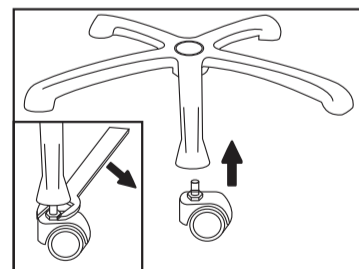
INSTRUCTIONS:

1. Stand Assembly

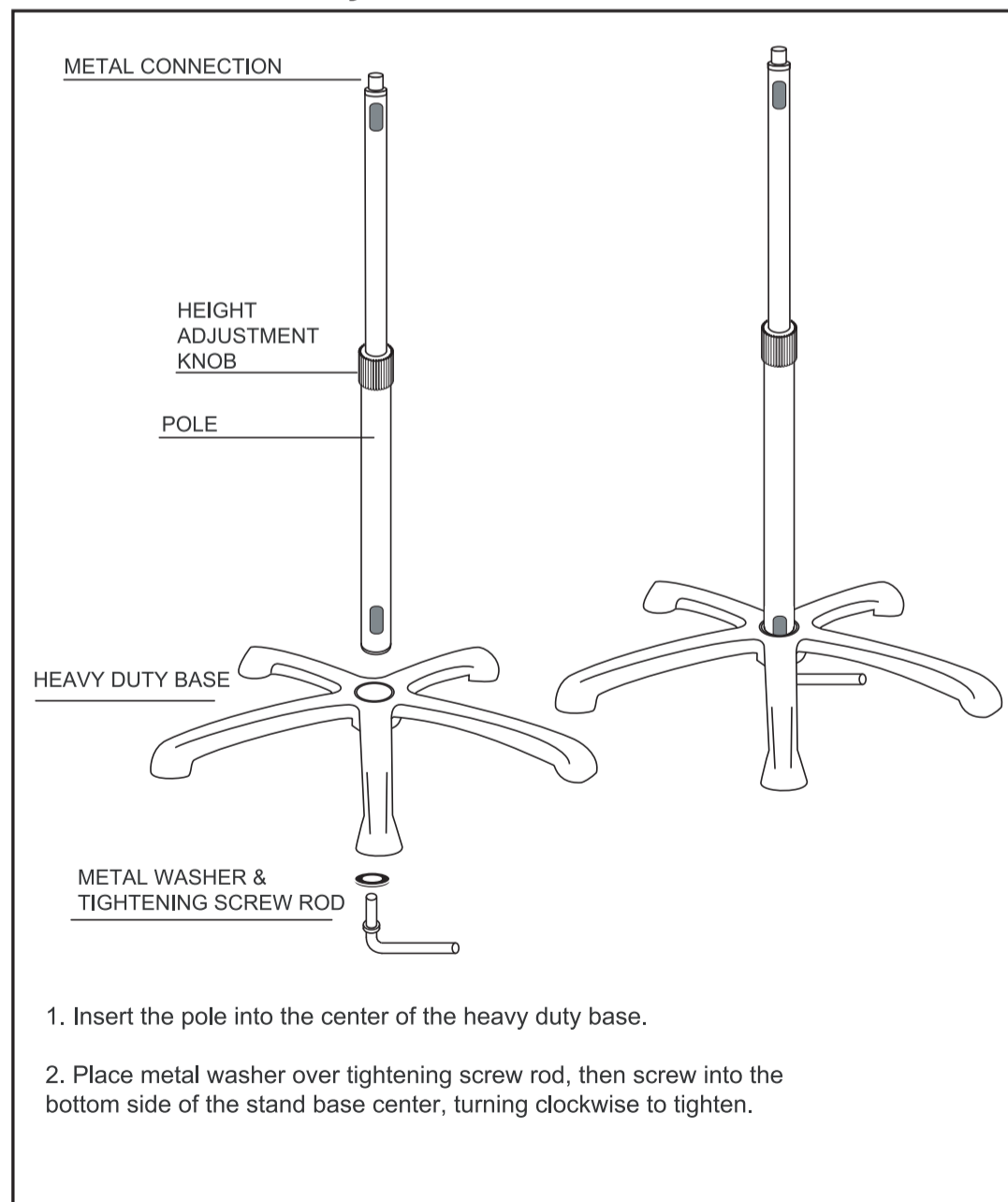
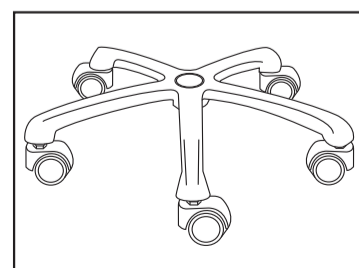


Attachable and detachable swivel casters

Attaching wheels:
Connect wheels to stand base before attaching pole.



Screw wheels into floor base by hand, then use wrench to tighten.



1. Insert the pole into the center of the heavy duty base.
2. Place metal washer over tightening screw rod, then screw into the bottom side of the stand base center, turning clockwise to tighten.

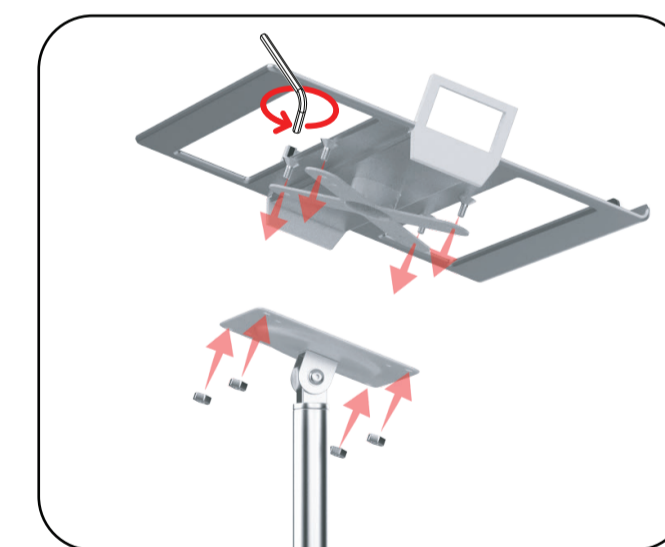
SUPPORT@CTADIGITAL.COM

2. Assemble ADD-VPOLEW to Stand



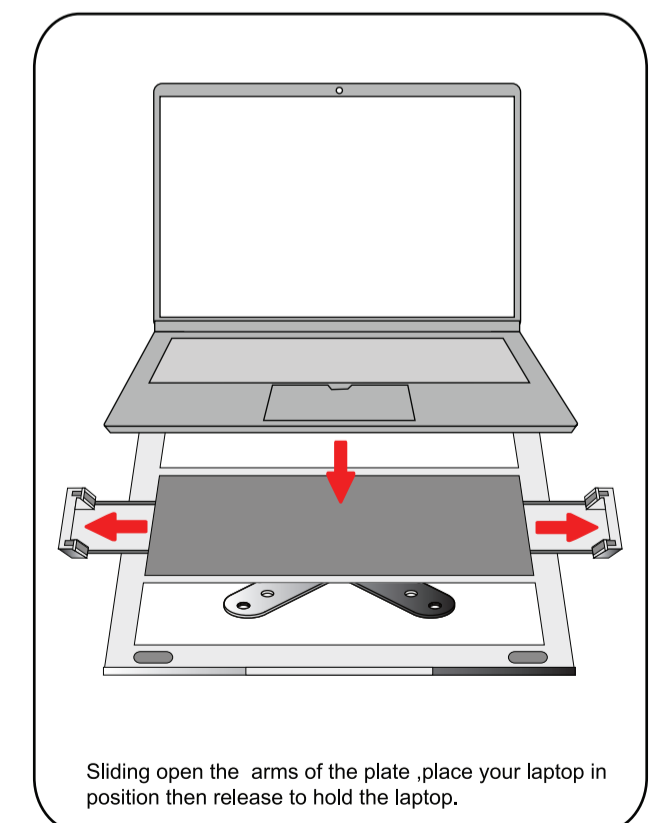
A. Screw in ADD-VPOLEW to the main body component as shown.

3. Connecting VESA to VESA



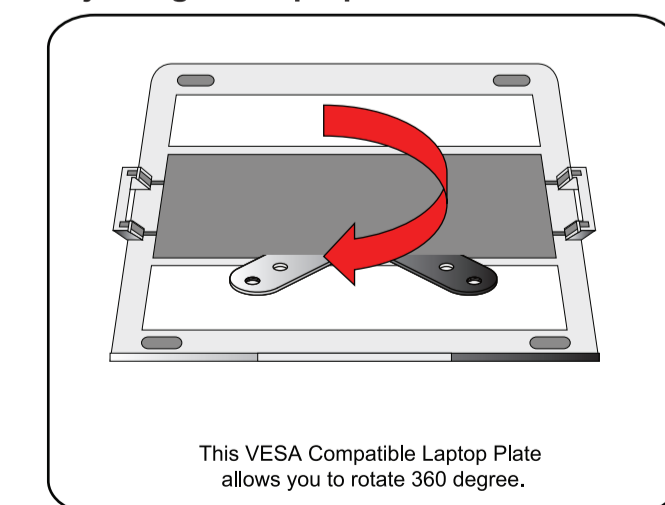
This VESA Compatible Laptop Plate allows you to connect with other VESA devices by screwing up the bolts with a Allen key as shown.

Inserting Laptop into Holder



Sliding open the arms of the plate, place your laptop in position then release to hold the laptop.

Adjusting the Laptop Plate



This VESA Compatible Laptop Plate allows you to rotate 360 degree.

SUPPORT@CTADIGITAL.COM