

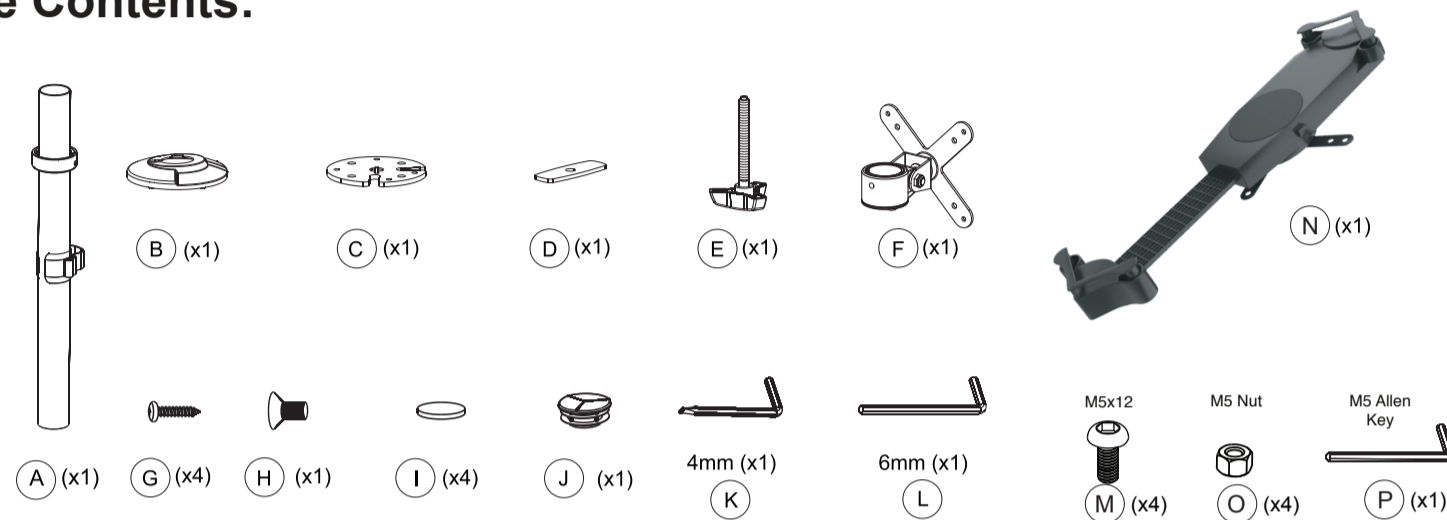


Desk Grommet Mount with Non-Security Universal Holder

PAD-GCADMH

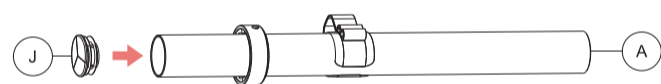
INSTRUCTION - MANUAL

Package Contents:

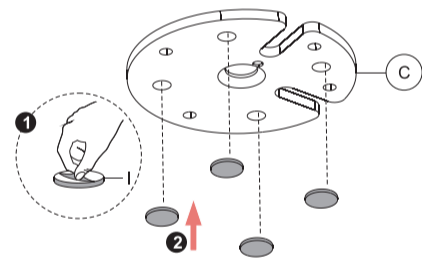


Instructions:

1. Setting Components for Mounting

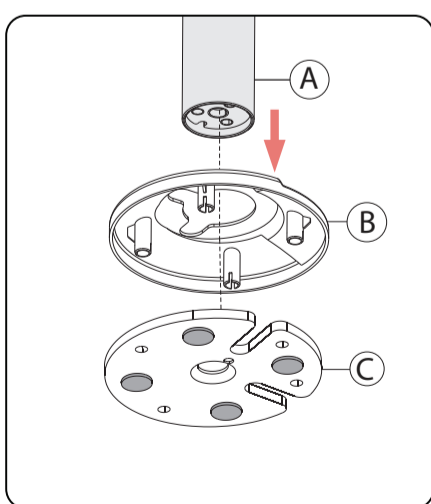


1A. Take the body pole endcap (J) and place it on the top end of the body pole (A) as illustrated above.

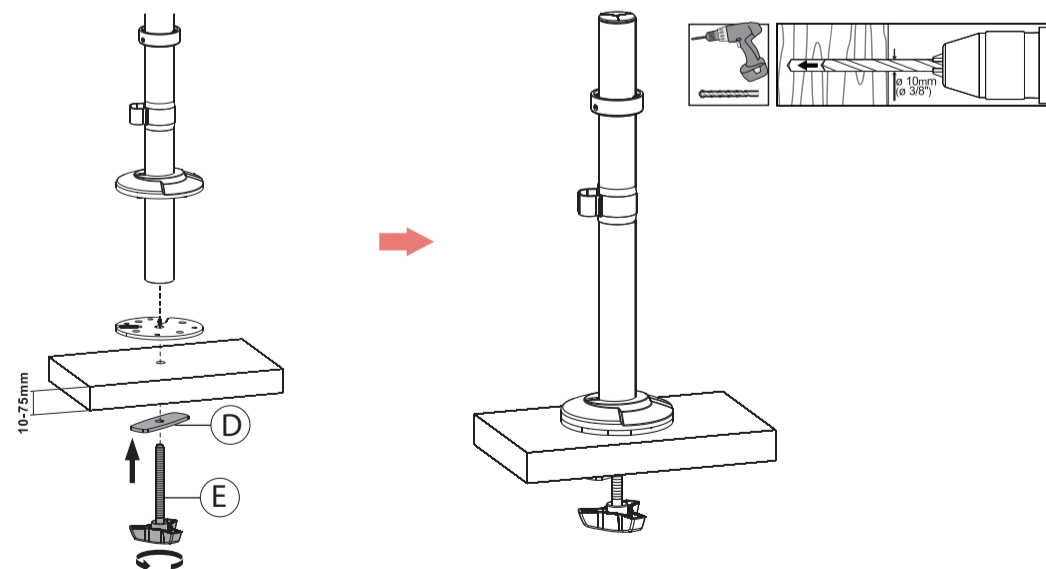


1B. Take the top half of the grommet clamp (C) and place on the (4) pads (I) underneath as shown. Peel off the sticker backing, and with the adhesive side facing the clamp, place it on securely.

2. Setting Up Grommet Clamp Mount Installation

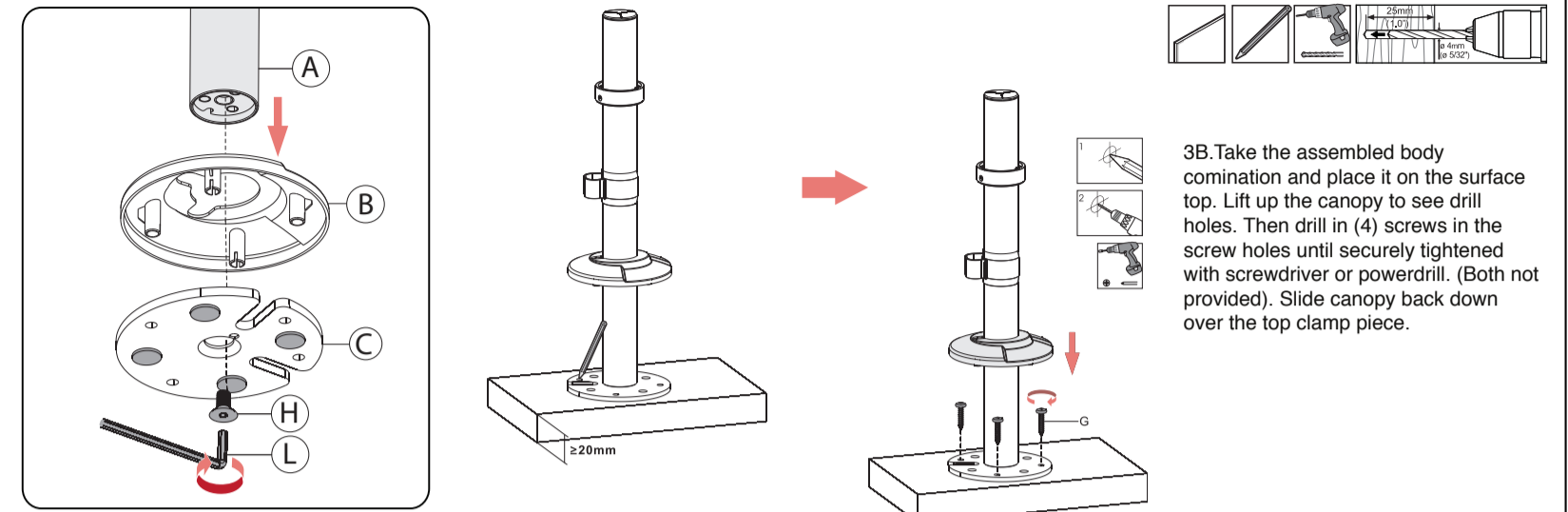


2A. Align the bottom end of the body pole (A) with the canopy (B) and with the top piece of the clamp (C).

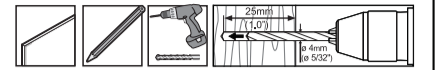


2B. Using a powerdrill tool (not included), drill a 10mm diameter hole through the surface you wish to mount into. Take the knob screw component (E) and the bottom piece of the clamp (D) from below and align with the top side components from step 2A. Then rotate the knob with bottom piece until securely tightened.

3. Setting Up Direct Grommet Mount Installation

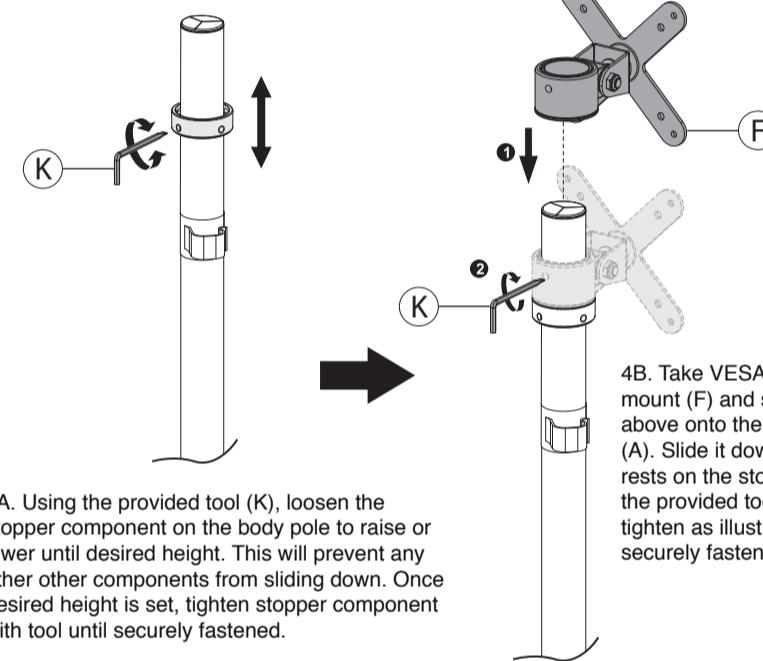


3A. Align the bottom end of the body pole (A) with the canopy (B) and with the top piece of the clamp (C). Then rotate in screw (H) from below using provided tool (L) until securely tightened as illustrated above.



3B. Take the assembled body combination and place it on the surface top. Lift up the canopy to see drill holes. Then drill in (4) screws in the screw holes until securely tightened with screwdriver or powerdrill. (Both not provided). Slide canopy back down over the top clamp piece.

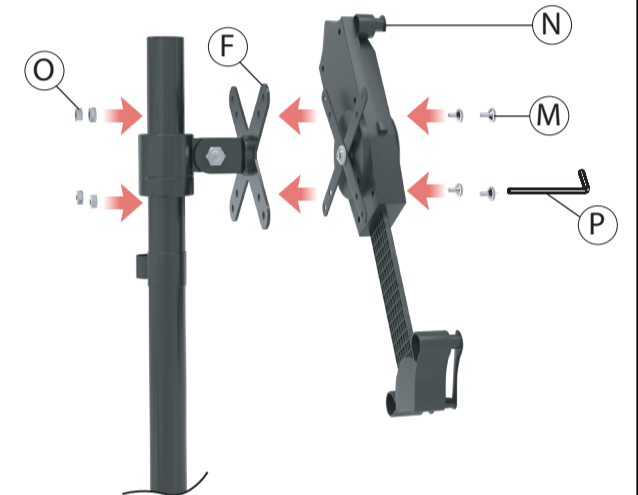
4. Placing VESA Mount on Pole



4A. Using the provided tool (K), loosen the stopper component on the body pole to raise or lower until desired height. This will prevent any other other components from sliding down. Once desired height is set, tighten stopper component with tool until securely fastened.

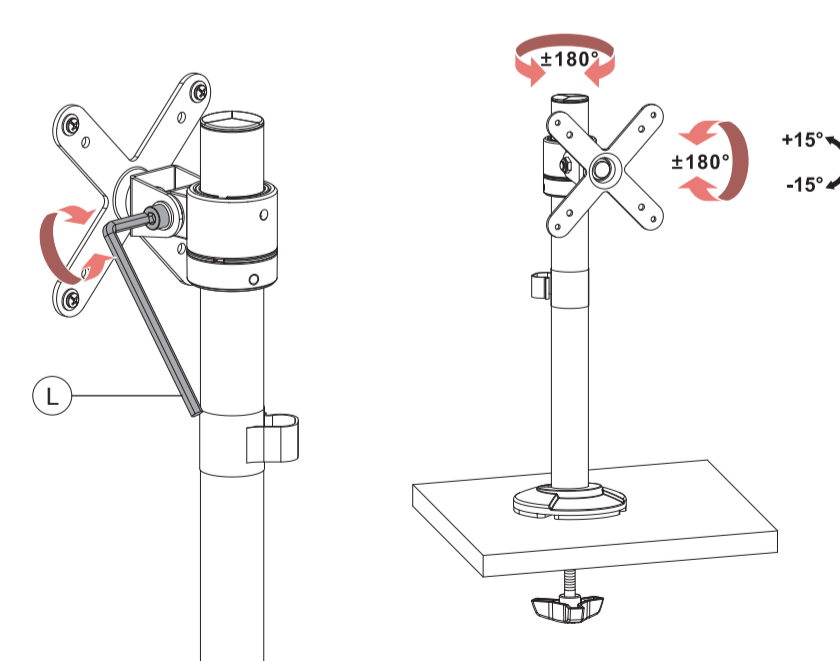
4B. Take VESA mount pole mount (F) and slide it from above onto the body pole (A). Slide it down until it rests on the stopper. Take the provided tool (K) and tighten as illustrated until securely fastened.

5. Connect VESA w/ Non-Security Holder



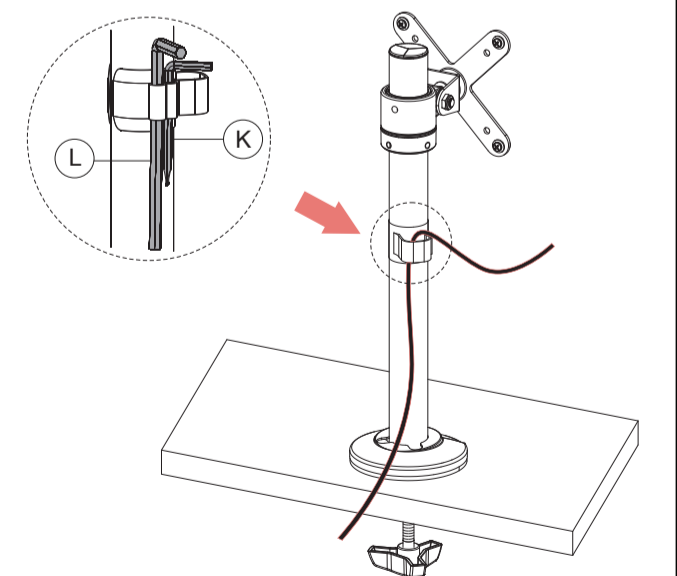
5A. Align clamp mount VESA plate (F) with the VESA plate of the tablet holder (N). Then using the provided tool (P), rotate in screws (M) from the front while holding the hex nuts (O) from behind with your hand. Do this for all (4) screws until securely tightened.

6. Adjusting VESA Joint for Tilt, Swivel & Orientation Adjustability



6A. Align clamp mount VESA plate (F) with the VESA plate of the tablet holder (N). Then using the provided tool (P), rotate in screws (M) from the front while holding the hex nuts (O) from behind with your hand. Do this for all (4) screws until securely tightened.

7. Cable Routing & Tool Management



7A. Identify cable management clip / tool organizer on the body pole (A). When fishing your wire from the tablet/device towards the power source, hook onto the clip to aid in neatly routing the cable. Also on the side of the clip, you can find two tool holders to help put away provided tools (L, K) as illustrated above. When angle adjustments are needed and joints need to be loosened, it provides quick access to the needed tools.