

Dome Camera

Quick Setup Guide

TI-NMD04AV3

this device. Otherwise, the service life of the image sensor may be shortened.

- If this device is installed in places where thunder and lightning frequently occur, ground the device nearby to discharge high energy such as thunder strikes in order to prevent device damage.

CAUTION

- Avoid heavy loads, intensive shakes, and soaking to prevent damages during transportation and storage. The warranty does not cover any device damage that is caused during secondary packaging and transportation after the original packaging is taken apart.
- Protect this device from fall-down and intensive strikes, keep the device away from magnetic field interference, and do not install the device in places with shaking surfaces or under shocks.
- Clean the device with a soft dry cloth. For stubborn dirt, dip the cloth into slight neutral cleanser, gently wipe the dirt with the cloth, and then dry the device.
- Do not jam the ventilation opening. Follow the installation instructions provided in this document when installing the device.
- Keep the device away from heat sources such as radiators, electric heaters, or other heat equipment.
- Keep the device away from moist, dusty, extremely hot or cold places, or places with strong electric radiation.
- If the device is installed outdoors, take insect- and moisture-proof measures to avoid circuit board corrosion that can affect monitoring.
- Remove the power plug if the device is idle for a long time.

Precautions

Fully understand this document before using this device, and strictly observe rules in this document when using this device. If you install this device in public places, provide the tip "You have entered the area of electronic surveillance" in an eye-catching place. Failure to correctly use electrical products may cause fire and severe injuries.

WARNING	It alerts you to moderate dangers which, if not avoided, may cause minor or moderate injuries.
CAUTION	It alerts you to risks. Neglect of these risks may cause device damage, data loss, device performance deterioration, or unpredictable results.
NOTE	It provides additional information.

WARNING

- Strictly observe installation requirements when installing the device. The manufacturer shall not be held responsible for device damage caused by users' non-conformance to these requirements.
- Strictly conform to local electrical safety standards and use power adapters that are marked with the LPS standard when installing and using this device. Otherwise, this device may be damaged.
- Use accessories delivered with this device. The voltage must meet input voltage requirements for this device.
- If this device is installed in places with unsteady voltage, ground this device to discharge high energy such as electrical surges in order to prevent the power supply from burning out.
- When this device is in use, ensure that no water or any liquid flows into the device. If water or liquid unexpectedly flows into the device, immediately power off the device and disconnect all cables (such as power cables and network cables) from this device.
- Do not focus strong light (such as lighted bulbs or sunlight) on

Special Announcement

- All complete products sold by the manufacturer are delivered along with nameplates, quick setup guide and accessories after strict inspection. The manufacturer shall not be held responsible for counterfeit products.
- The manufacturer will update this manual according to product function enhancement or changes and regularly update the software and hardware described in this manual. Update information will be added to new versions of this manual without prior notice.
- This manual may contain misprints, technology information that is not accurate enough, or product function and operation description that is slightly inconsistent with the actual product, the final interpretation of company is as a standard.
- This manual is only for reference and does not ensure that the information is totally consistent with the actual product. For consistency, see the actual product.

NOTE

For more information, please refer to website.

1 Packing List

Open the package, check the appearance of product for no obvious damage, and confirm the item list for table 1-1 is consistent.

Table 1-1 Packing list

Component	Quantity	Remark
Vandal Dome Network Camera	1	
Quick Setup Guide	1	
L hexagonal wrench 80×25mm	1	
Installation location sticker	1	
Stainless self-tapping screw PA 4.0×30mm	3	
Swell plastic button φ5.6×29mm	3	
Auxiliary thread-line tool	1	
Green terminal block 3.81-9P	1	
Green terminal block 3.81-4P	1	

Table 2-1 Interface of camera

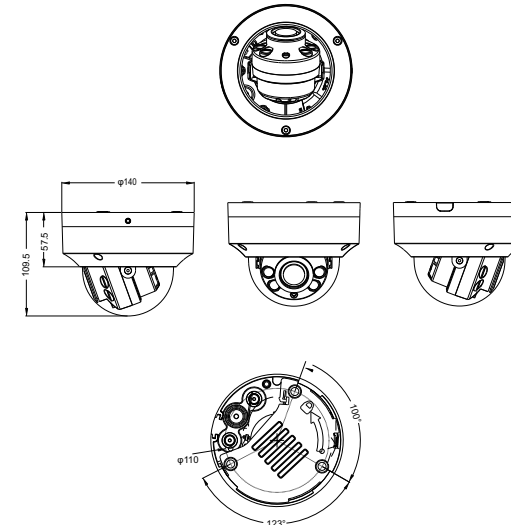
Port name	Description	Remark	
Reset button	Long press the button 5 seconds to restore the original settings.		
Alarm/Audio	Alarm out/in	out A, alarm out A out B, alarm out B G, ground In, alarm in	Applied for alarm function
	Audio out/in	In, audio in	Applied for audio function
		Out, audio out	
Analog video	CVBS, analog video output		
	G, ground		
Network access port	Connects to a standard Ethernet cable.		
12V power supply	The ports are 12V/ OUT/12V/IN.		
Over cable rubber stopper	Uses the auxiliary thread-line tool to through the cable		
Over function-cord rubber stopper	There are two rubber stoppers, user can use the tool (screw driver or L hexagonal wrench) to pierce the stopper, and plug all cords in.		

2.2 Camera Dimensions

NOTE

Different devices may have different dimensions, please refer to the actual product.

Figure 2-2 Dimensions of Dome(Unit:mm)



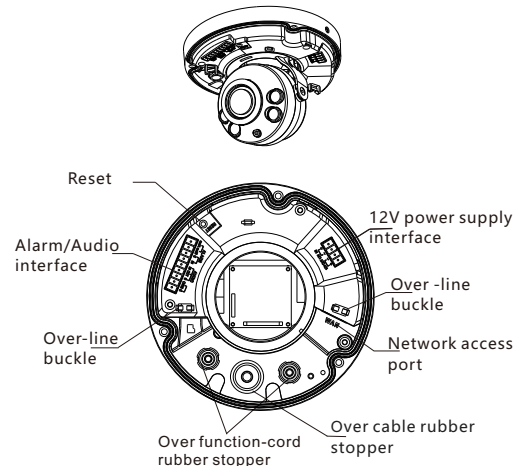
2 Appearance

2.1 Device Ports

NOTE

Different devices may have different device ports, please refer to the actual product.

Figure 2-1 Device ports



3 Device Installation

WARNING

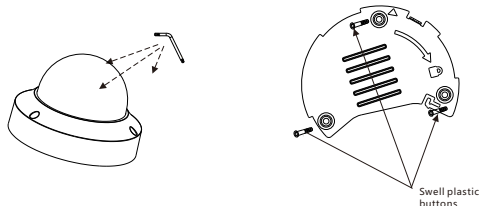
To avoid moisture influence, install the dome cover at least half an hour after the camera is installed and powered on.

The vandal dome camera can be installed in the ceiling, wall, wall bracket or ceiling bracket. This section describes how to install the camera in the ceiling.

Installation Steps:

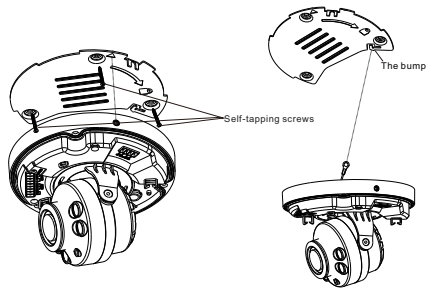
- Step 1 Stick the Installation location sticker which is in accessory package on the ceiling or wall, Drill three holes based on the marks on the sticker. Drive the swell plastic buttons into the holes.
- Step 2 Use the wrench in the accessory package to unscrew the three screws on the dome cover. The camera is opened, as shown in figure 3-1. And use release the base panel

Figure 3-1 Opening camera



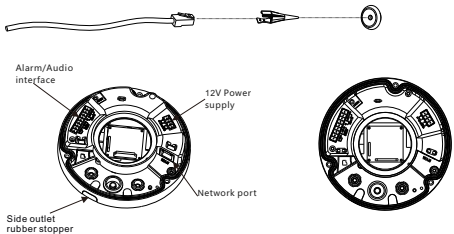
- Step 3 Fetch three black self-tapping screws from the accessory package. Then fix the screws to fasten the base panel of camera on the ceiling as shown in figure 3-2. The position of hook should be put at the appropriate place, which should pass the bump as shown in figure 3-2.

Figure 3-2 Installation



- Step 4 Plug the network access port into interface by using the tool, as shown in figure 3-3; The power supply of the multi-head cable and other port to interface pass through the rubber stopper by using screw driver or L hexagonal wrench.

Figure 3-3 Installing housing

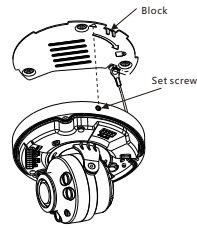


NOTE

- There are two outlet mode of cable, for the top outlet mode, user should drill the hole at first for threading cable.
- The side outlet mode that the installation sticker's gap should align the outlet rubber stopper.

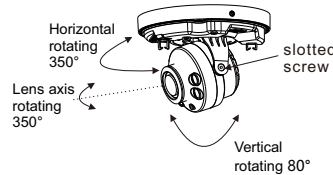
- Step 5 The set screw should be aligned the direction icon of base panel, then rotate the device clockwise to the extreme position, then tighten the set screw to lock block.

Figure 3-4 Install device



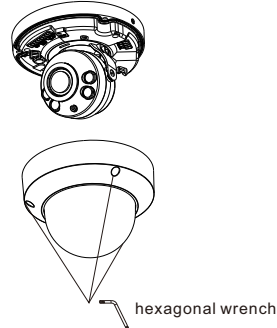
- Step 6 Connect the camera to monitor, loosen the screws of support frame, as shown in figure 3-5. Adjust the three axes to focus image on monitoring scenarios. Tighten the screws to finish adjustment.

Figure 3-5 adjust lens



- Step 7 Arrange the cable of camera to over-line buckle, then assemble the dome cover with hex wrench, as shown in figure 3-6.

Figure 3-6 Assembling cover



NOTE

- During adjusting lens, the image might be blur, set the focus value in **Sensor > Lens control** page in web page.

4 Access Your Camera

4.1 Login

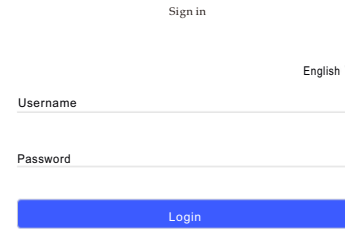
- Step 1 Open the Internet Explorer, input the IP address of IP camera (the default value: 192.168.0.120) in the address box, and press **Enter**. The login page is displayed, as shown in figure 4-1.

- Step 2 Input the user name and password.

NOTE

- The default user name and password both are admin. Modify the password when you login the system for the first time to ensure system security.
- It is advised to restart the device three minutes later after modifying password to ensure modified successfully.
- User can change the system display language on the login page.

Figure 4-1 Login



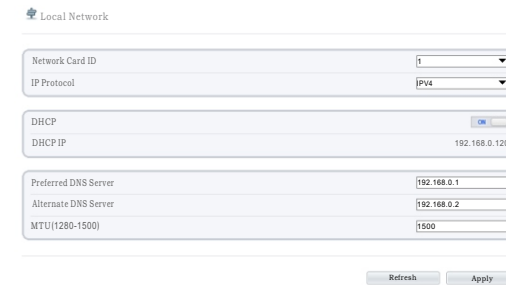
- Step 3 Click **Login**, the main page is displayed.

4.2 Modify IP address

Choose **Configuration > Device > Local Network**, the **Local Network** page is displayed. Input the IP address in the IP Address box and click **Apply** as shown in figure 4-2.

After the success of the IP address setting, please use the new IP address to login the Web interface.

Figure 4-2 Local Network



4.3 Browsing Video

To ensure the real-time video can be played properly, you must perform the following operation when you login the web for the first time:

- Step 1 The Internet Explorer. Choose **Tools > Internet options > Security > Trusted sites > Sites**, in the display dialog box, click **Add**, as shown in figure 4-3.
- Step 2 In the Internet Explorer, choose **Tool > Internet Options > Security > Customer level**, and set **Download unsigned ActiveX control and initialize and script ActiveX controls not marked as safe for scripting under ActiveX controls and plug-ins to Enable**, as shown in figure 4-4.

Figure 4-3 Adding a trusted site

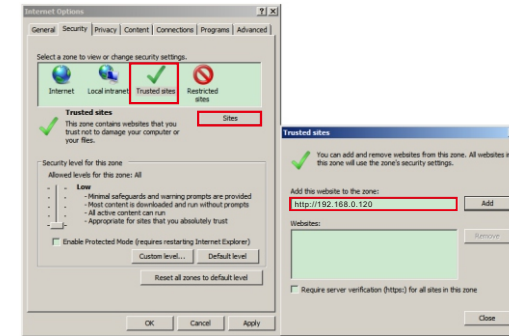
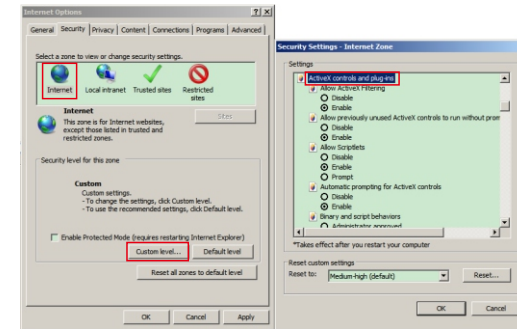


Figure 4-4 Configuring ActiveX control and plug-in



- Step 3 Download and install the player control as prompted.

NOTE

If the repair tips are displayed when installing the control, please ignore the prompt, and continue the installation, close the browser during installing. Then login the page again.

To browse a real-time video, login the device and click **Live Video**. The Live Video page is displayed, as shown in figure 4-5.

Figure 4-5 Live Video

