



VESA Compatible POS Station

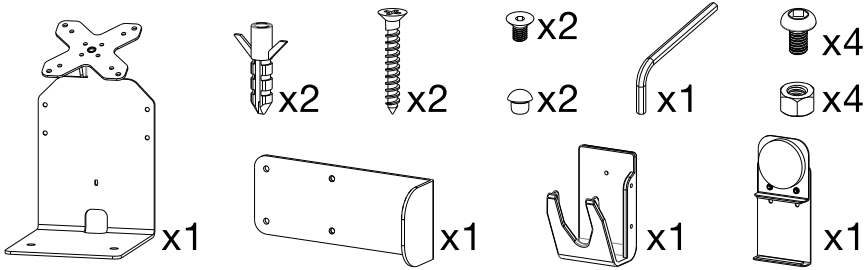
with Printer Stand, Magnetic Scanner & Card Reader Holder

BLACK / WHITE

ADD-PARAPOS / ADD-PARAPOSW

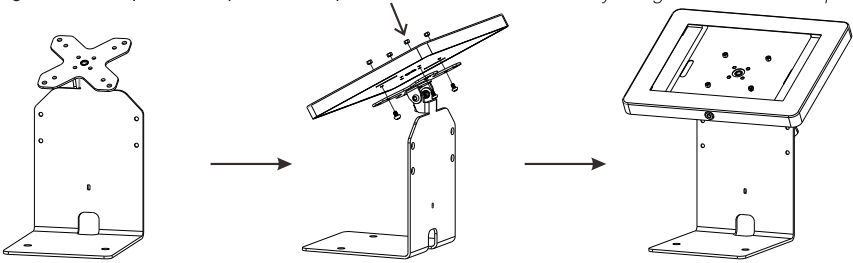
INSTRUCTION - MANUAL

Component Checklist

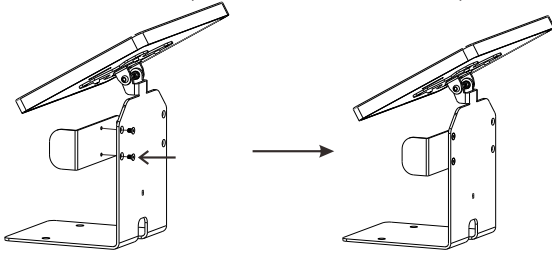


1. Installing a VESA compatible component example

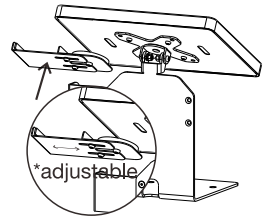
***Tablet Enclosure is not included and only being shown as an example*



2. Screw in arm with tools provided for scanner holder component



3. Use magnetic card reader holder component and place on metal surface as shown or anywhere



4. Place magnetic scanner holder on arm as shown below

