

# Quick Start Guide

## AVRX550UA, AVRX750UA UPS Systems

**(Series Numbers: AG-0504, AG-0506)**

*Not suitable for mobile applications.*

This document explains the most important features of your UPS system.  
For additional information, download the Owner's Manual PDF from  
**[tripplite.com/support/manuals](http://tripplite.com/support/manuals)**



1111 W. 35th Street, Chicago, IL 60609 USA • [tripplite.com/support](http://tripplite.com/support)

Copyright © 2021 Tripp Lite. All rights reserved.

# Important Safety Instructions

## SAVE THESE INSTRUCTIONS

This manual contains instructions and warnings that should be followed during the installation, operation and storage of this product. Failure to heed these warnings may affect the warranty.

### UPS Location Warnings

- Install your UPS indoors, away from excess moisture or heat, conductive contaminants, dust or direct sunlight.
- For best performance, keep the indoor temperature between 32° F and 104° F (0° C and 40° C).
- Leave adequate space around all sides of the UPS for proper ventilation.
- Only set the UPS upright on a sturdy flat surface. Do not block fans or ventilation holes, as this will seriously inhibit the unit's internal cooling and cause product damage not covered under warranty.

### UPS Connection Warnings

- Connect your UPS directly to a properly grounded AC power outlet. Do not plug the UPS into itself; this will damage the UPS.
- Do not modify the UPS plug, and do not use an adaptor that would eliminate the UPS ground connection.
- Do not use extension cords to connect the UPS to an AC outlet.
- If the UPS receives power from a motor-powered AC generator, the generator must provide clean, filtered, computer-grade output.
- The mains socket-outlet that supplies the UPS should be easily accessible and located near the UPS.
- For use on a TN power distribution system.

### Equipment Connection Warnings



**Short-circuit backup protection and overcurrent protection are provided by the building installation.**

**To reduce the risk of fire, connect only to a circuit-provided branch circuit overcurrent protection. The plug on the power supply cord is intended to serve as the disconnect device. Be sure the socket-outlet is installed near the equipment and is made easily accessible.**

- Use of this equipment in life support applications where failure of this equipment can reasonably be expected to cause the failure of the life support equipment or to significantly affect its safety or effectiveness is not recommended.
- Do not connect surge protectors or extension cords to the output of your UPS. This might damage the UPS and may affect the surge protector and UPS warranties.

# Important Safety Instructions

- Connect the UPS to an outlet that is adequately protected against excess currents, short circuits and earth faults as part of the building installation.

## Battery Warnings

- Batteries can present a risk of electrical shock and burn from high short-circuit current. Observe proper precautions. Do not dispose of the batteries in a fire. Do not open the UPS or batteries. Do not short or bridge the battery terminals with any object. Unplug and turn off the UPS before performing battery replacement. Use tools with insulated handles. There are no user-serviceable parts inside the UPS. Battery replacement should be performed only by authorised service personnel using the same number and type of batteries (sealed lead-acid).

The batteries are recyclable. Refer to your local codes for disposal requirements or visit [tripplite.com/support/recycling-program](http://tripplite.com/support/recycling-program) for recycling information. Tripp Lite offers a complete line of UPS System Replacement Battery Cartridges (R.B.C.). Visit Tripp Lite on the Web at [tripplite.com/products/battery-finder/](http://tripplite.com/products/battery-finder/) to locate the specific replacement battery for your UPS.



**CAUTION: A battery can present a risk of electrical shock and high short-circuit current. Contact with any part of a grounded battery can result in electrical shock. The following precautions should be observed when working on batteries:**

- Remove watches, rings or other metal objects.
- Use tools with insulated handles.
- Wear rubber gloves and boots.
- Do not lay tools or metal parts on top of batteries.
- Disconnect the charging source and load prior to installing or maintaining the battery.
- Remove battery grounds during installation and maintenance to reduce likelihood of shock.
- Remove the connection from ground if any part of the battery is determined to be grounded.
- Unplug the UPS from the AC mains receptacle. Disconnect all cables, including the equipment plugged into the UPS.
- Servicing of batteries should be performed or supervised by personnel knowledgeable about batteries and required precautions.
- When replacing batteries, replace with the same type and number of batteries or battery packs.
- CAUTION: Do not dispose of batteries in a fire. The batteries may explode.
- CAUTION: Do not open or mutilate batteries. Released electrolyte is harmful to the skin and eyes. It may be toxic.

## UPS and Battery Recycling



**Pb**

Tripp Lite products use sealed lead-acid batteries, which are highly recyclable.

Call Tripp Lite at 1.773.869.1234 or visit [tripplite.com/support/recycling-program](http://tripplite.com/support/recycling-program) for more information on recycling the batteries or any other Tripp Lite product.

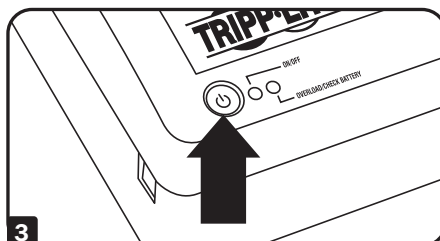
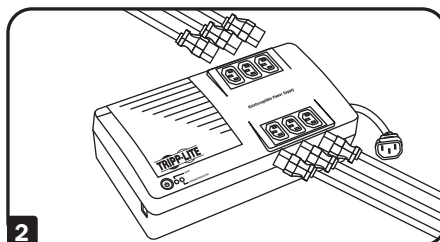
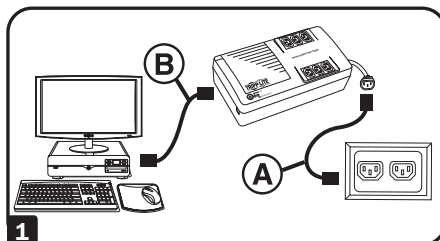
Please refer to local codes for disposal requirements.

# Installation

**1** Unplug the computer's power cord from both your AC outlet and the computer's AC input. Insert the C13 connector of the computer's cord **A** into your UPS's AC input. Insert the plug of your computer's cord into your AC outlet. Insert the C13 connector of the power cord that came with your UPS **B** into the computer's AC input. Insert the UPS cord's C14 connector into any of your UPS's battery backup C13 output receptacles.

**2** Plug remaining equipment into the UPS.

**3** Push the ON/OFF/TEST button for one second to turn the UPS on.



# Basic Operation



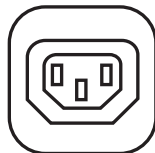
ON/OFF/TEST  
Button



ON/OFF  
LED



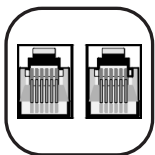
OVERLOAD/CHECK  
BATTERY LED



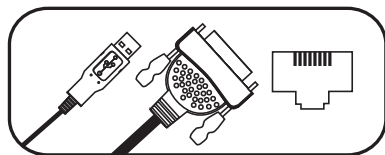
Battery Backup/  
Surge Protected  
Outlets



Surge-Only  
Protected Outlets



Tel/DSL Jacks  
(Select Models Only)



Communications Port  
(Select Models Only—for Use with  
Included USB or DB9 Cable)



Ground  
Connection

# Regulatory Compliance

## Regulatory Compliance Identification Numbers

For the purpose of regulatory compliance certifications and identification, your Tripp Lite product has been assigned a unique series number. The series number can be found on the product nameplate label, along with all required approval markings and information. When requesting compliance information for this product, always refer to the series number. The series number should not be confused with the marketing name or model number of the product.

## EMC Specifications for Models with EMC Category C2 Approval (Select Models):

WARNING: This is a category C2 UPS product. In a residential environment, this product may cause radio interference, in which case the user may be required to take additional measures.

## WEEE Compliance Information for Tripp Lite Customers and Recyclers (European Union)



Under the Waste Electrical and Electronic Equipment (WEEE) Directive and implementing regulations, when customers buy new electrical and electronic equipment from Tripp Lite they are entitled to:

- Send old equipment for recycling on a one-for-one, like-for-like basis (this varies depending on the country)
- Send the new equipment back for recycling when this ultimately becomes waste

Tripp Lite has a policy of continuous improvement. Product specifications are subject to change without notice.

## Note on Labeling

Two symbols are used on the label.

V~ : AC Voltage

V— : DC Voltage





1111 W. 35th Street, Chicago, IL 60609 USA • [triplite.com/support](http://triplite.com/support)