

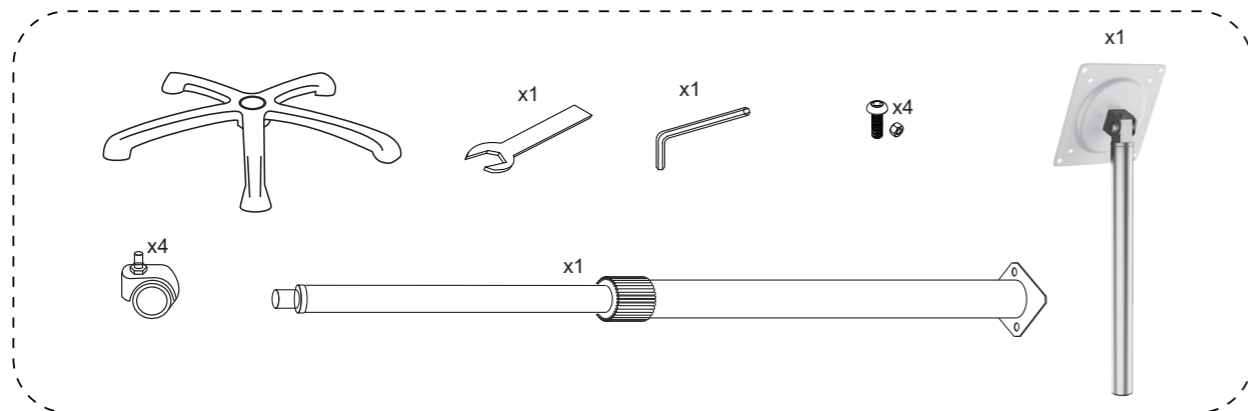


VESA-Compatible Heavy-Duty Height-Adjustable Rolling Floor Stand

USER MANUAL

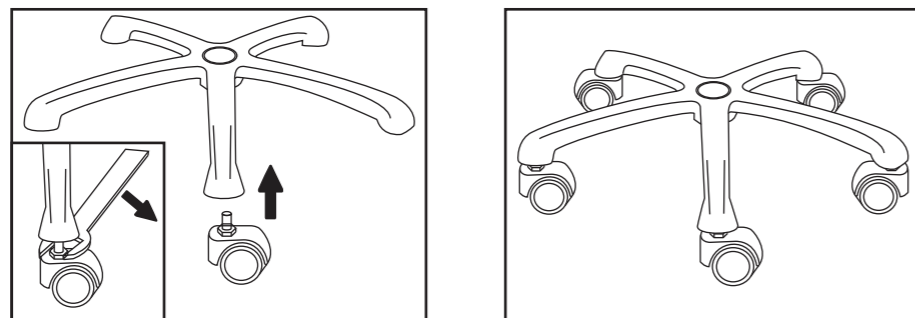
PAD-HFSVP

Contents:



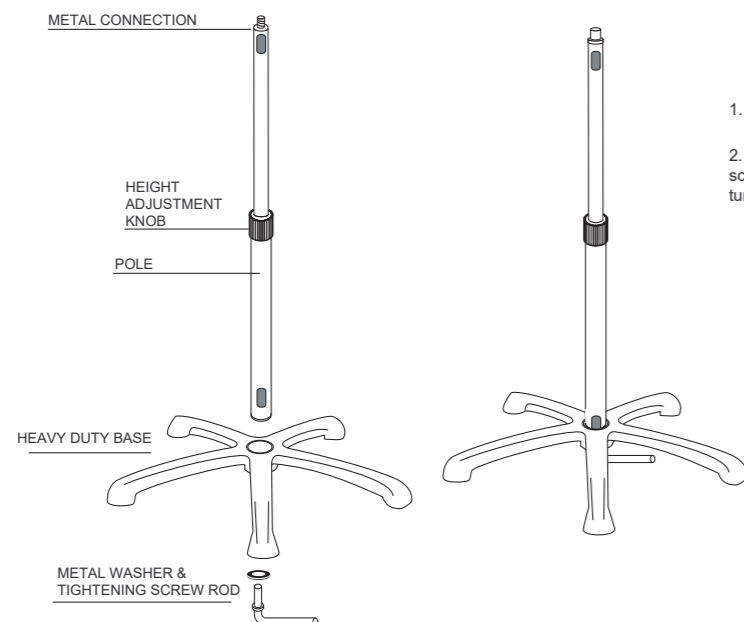
Instructions:

1. Attaching the wheels



Screw wheels into floor base by hand, then use wrench to tighten.

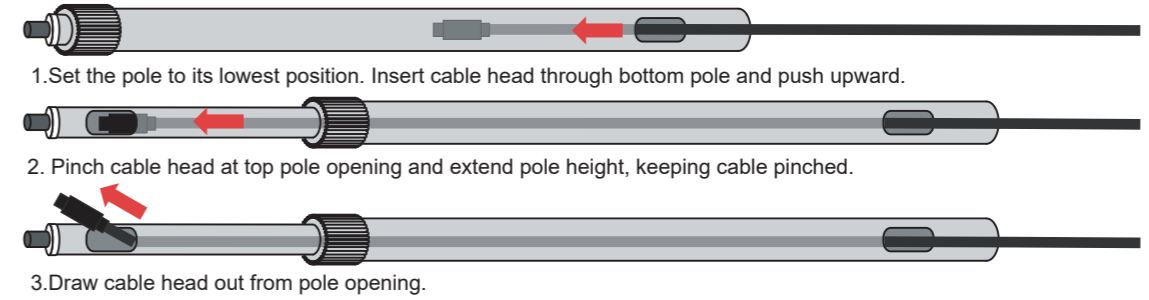
2. Stand Assembly:



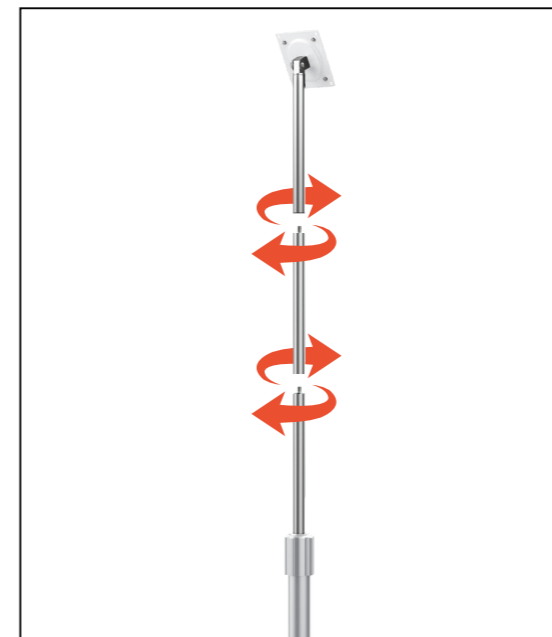
1. Insert the pole into the center of the heavy duty base.
2. Place metal washer over tightening screw rod, then screw into the bottom side of the stand base center, turning clockwise to tighten.

2. Routing Your Charge Cable

This product allows you to go through the cable from the cable routings on the pole.

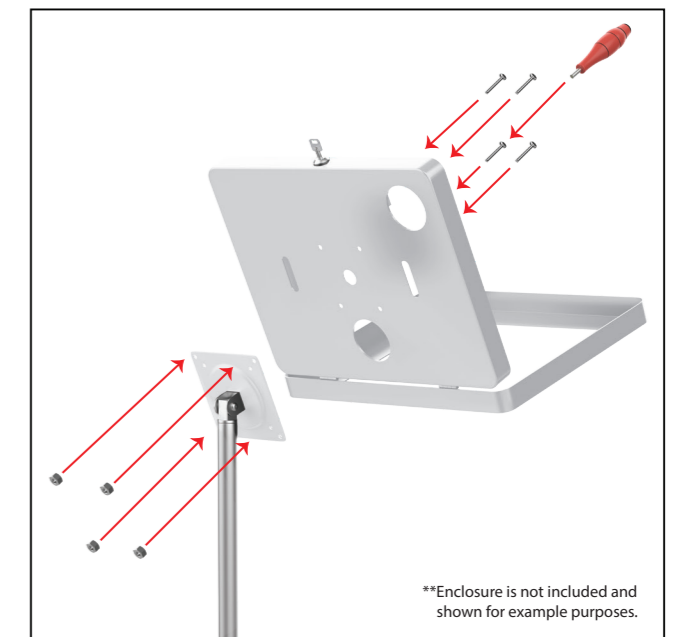


3. VESA Pole Assembly to Base:



Screw in ADD-VPOLE and ADD-POLE as shown above.

4. Mounting Item to VESA plate:



**Enclosure is not included and shown for example purposes.

Combine nuts and bolts through VESA plate from the front & back as shown with provided tools.

4. Cable Routing/Cable Management:



**Enclosure is not included and shown for example purposes.



Route the cable through the hole at the top of the body and out the bottom.