

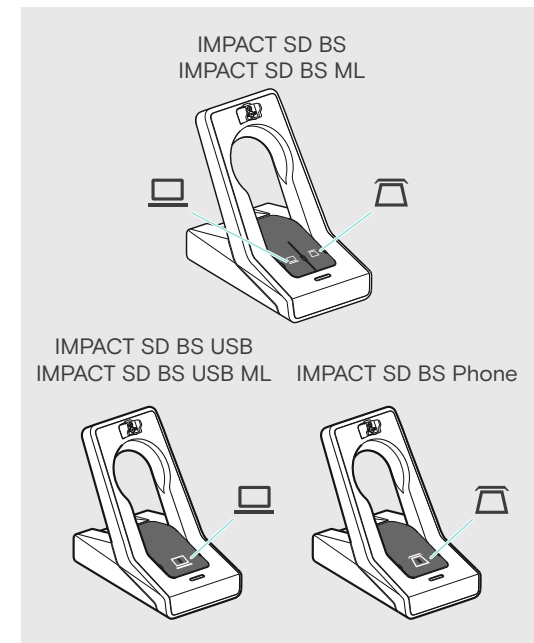
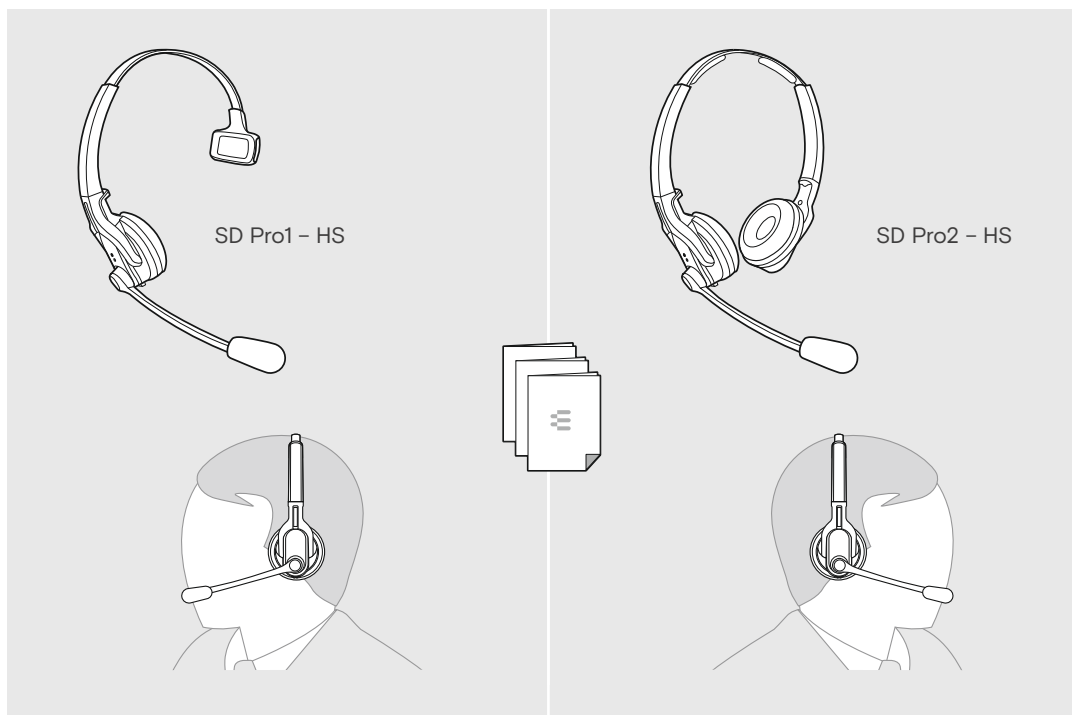


IMPACT SD Series

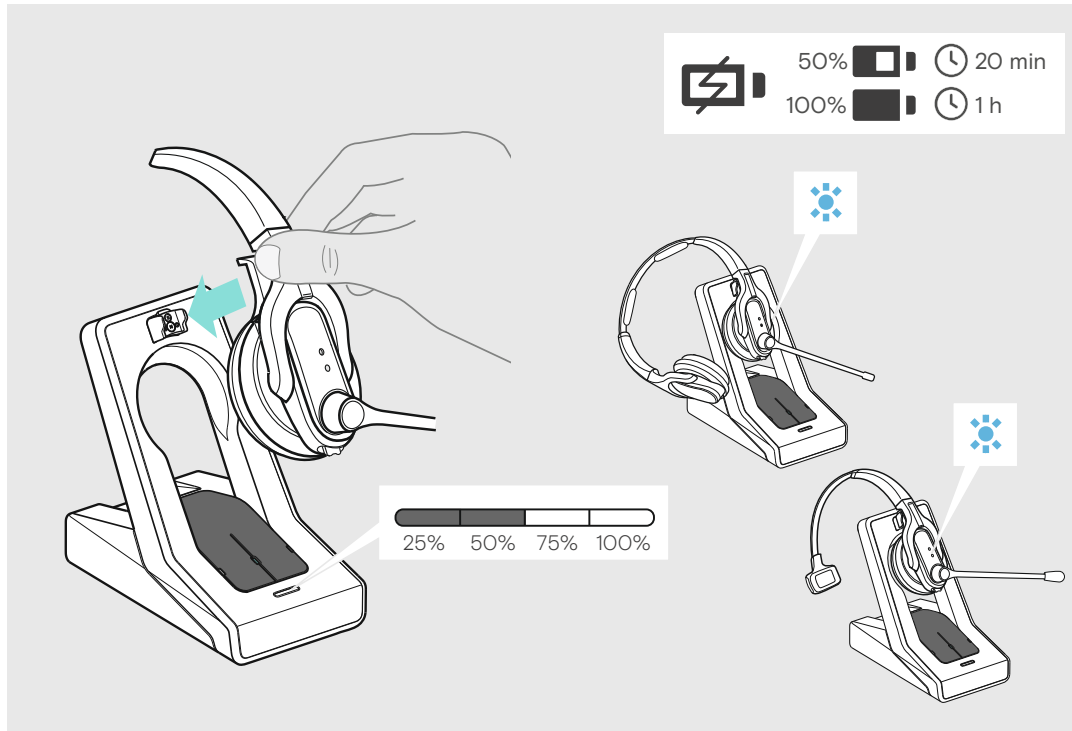
IMPACT SD Pro 1 headset
IMPACT SD Pro 2 headset

EN Quick Guide ES Guía rápida
FR Guide express PT Guia Rápido

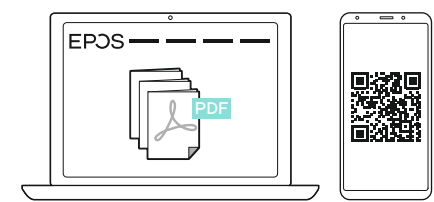
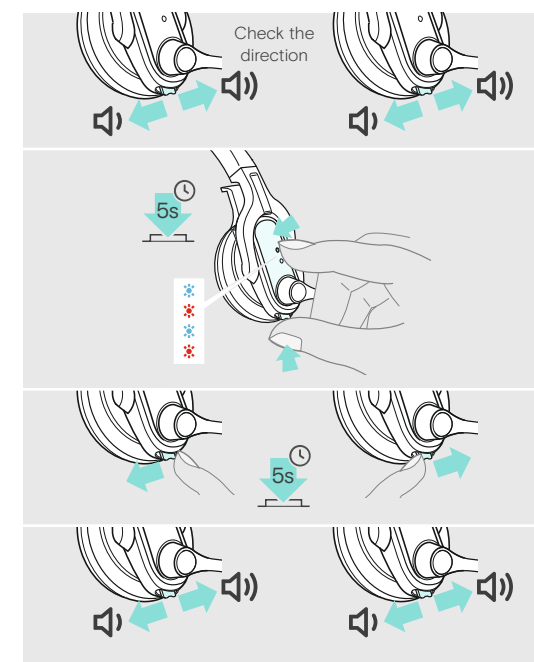
Model: SD 20 HS, SD 30 HS



Charging the headset | Charger l'oreillette | Cargar el headset | Carregar os micro-auscultadores



Swapping the direction of the volume buttons |
Permuter la fonction des touches Volume+ et Volume- |
Cambiar la asignación de las teclas de volumen |
Trocar a ocupação das teclas de volume



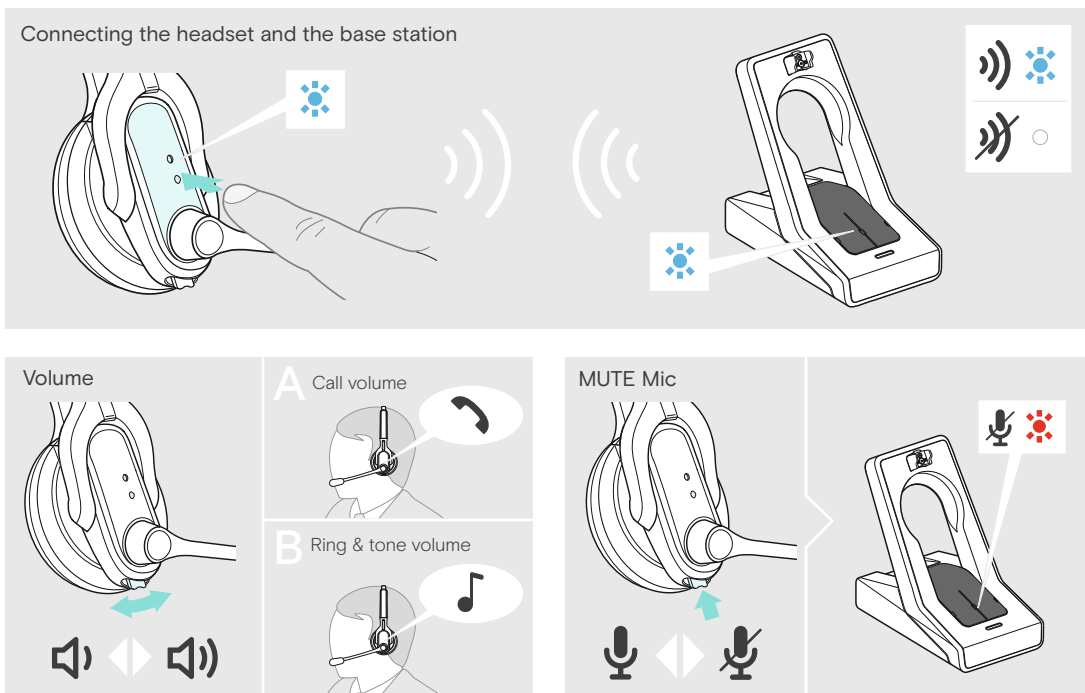
www.eposaudio.com/support

DSEA A/S

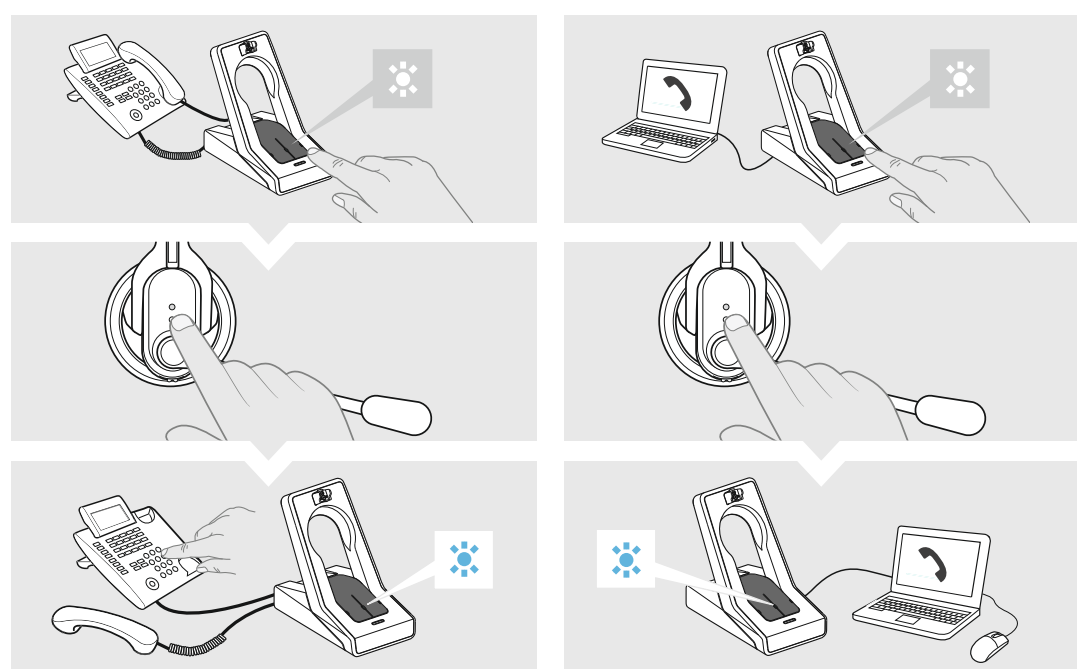
Kongebakken 9, DK-2765 Smørum, Denmark
www.eposaudio.com

Printed in China, Publ. 06/20, 770-00079/A08

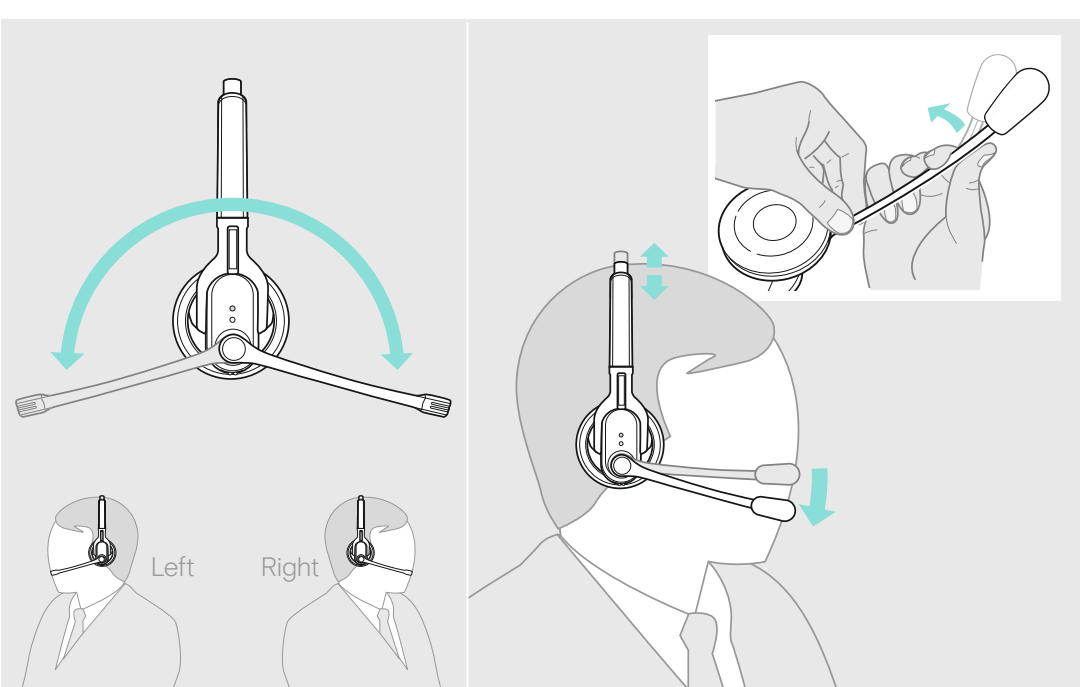
Using the headset | Utiliser l'oreillette | Utilizar el headset | Utilizar o auricular



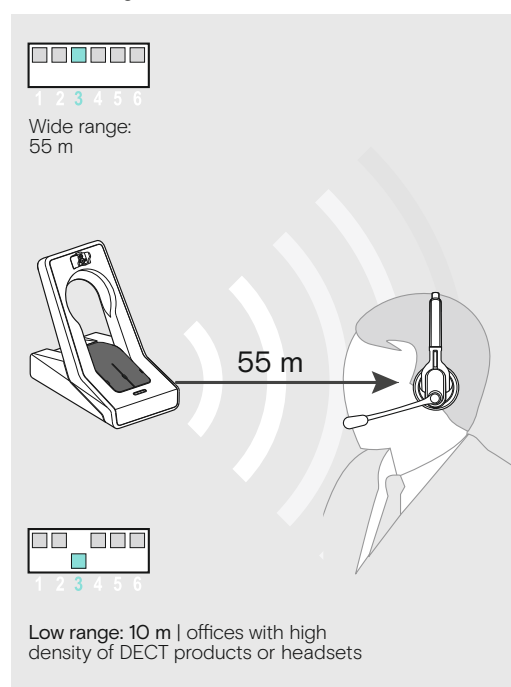
Making calls via the headset | Téléphoner avec l'oreillette | Telefonar mediante el headset |
Fazer uma chamada telefónica através do micro-auscultador



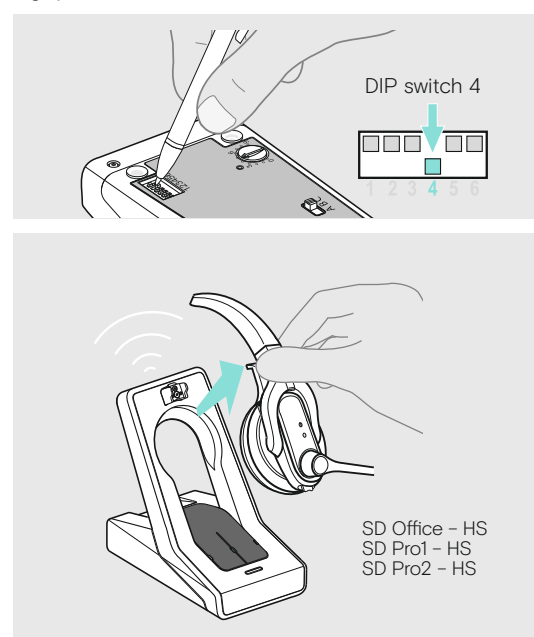
Wearing the headset | Porter l'oreillette | Utilizar el headset | Utilizar o microauscultador

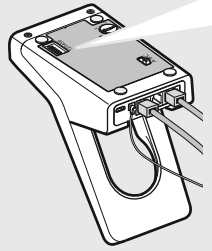
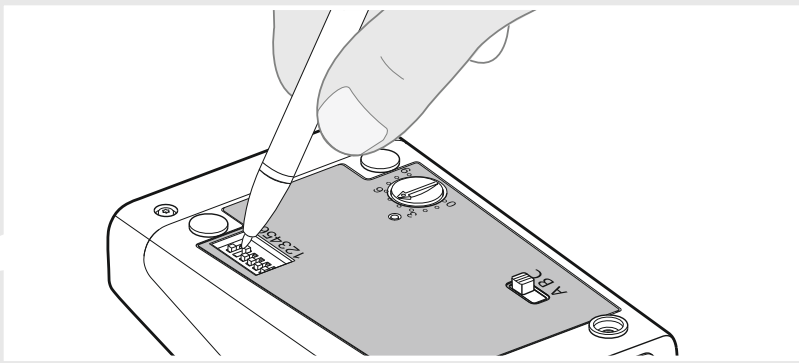
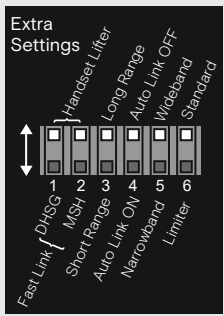


Leaving the DECT range | Sortir de la portée DECT | Salir del rango DECT | Sair do alcance DECT



Automatic link establishment |
Établissement automatique d'une liaison |
Establecimiento de conexión automático |
Ligação automática





<p>Manual operation Lifts/hangs up the headset manually or using the handset lifter (HSL 10 II).</p>	<p>Manual link establishment When taking the headset out of the base station, you have to manually establish the wireless link between headset & base station.</p>
<p>Electronic hook switch (DHSG standard) Call control via the headset system. For faster link establishment, see Fast Link.</p>	<p>Automatic link establishment - Auto Link When taking the headset out of the base station, a wireless link is automatically established between headset and base station.</p>
<p>Electronic hook switch (MSH standard) Call control via the headset system.</p>	<p>Wideband audio transmission Automatic frequency adjustment of wideband & narrowband calls. Wideband audio transmission is e.g. supported by Skype & gives high speech quality. Battery life: 8 hours</p>
<p>Fast Link for DHSG standard & HSL 10 II handset lifter Recommended for frequent callers. Fast link establishment without delay due to hidden link to the base station.</p>	<p>Narrowband audio transmission Battery life: 12 hours</p>
<p>Standard radio range</p>	<p>Standard limitation</p>
<p>Reduced radio range Use this setting in order to avoid interference with other DECT systems. Range of approx. 10 m indoors</p>	<p>Limited volume (country specific) EU and US version: in compliance with Directive 2003/10/EC AU version: in compliance with Directive AS/ACIF G616:2006</p>

Holding a conference call: Connecting the master headset & the guest headsets with a base station | Tenir une conférence téléphonique : Connecter l'oreillette maître et l'oreillette invitée à la station de base | Realizar una conferencia telefónica: Conexión del headset maestro y de los headsets invitados con la estación base | Realizar uma chamada em conferência: Ligar o micro-auscultador mestre e os micro-auscultadores secundários à base

New MASTER headset

GUEST headset 1-3

Ready for conference call: Master headset & Guest headsets connected to the base station

End a conference call

Replacing the ear pad | Remplacer le coussinet d'oreille | Cambiar las almohadillas para las orejas | Substituir as almofadas

Charging several headsets simultaneously | Charger plusieurs oreillettes simultanément | Cargar simultáneamente varios headsets | Carregar, simultaneamente, vários micro-auscultadores

Detailed information / Accessories | Informations détaillées / Accessoires | Información detallada / Accesorios disponibles | Informações mais pormenorizadas/Acessório disponível