

A solid green vertical bar is positioned on the left side of the page, partially overlapping the title text.

User Manual

2/4-Port 4K HDMI KVMP Switch with
USB 3.1 Gen 1 Hub and Audio Mixer

GCS1932H/GCS1934H

PART NO. M1644/M1645

Safety Instructions	4
Conventions	5
Introduction	6
Package Contents	6
Features	7
Requirements	8
Operating Systems	8
Overview	9
Hardware Setup	12
Six-Display (DCC Mode)	14
Basic Operation	16
Hotkey Operation	18
Advance Configuration	21
Mouse and Keyboard Emulation	24
Hotkey Settings Mode Summary Table	26
Keyboard Emulation	27
Sun Keyboard	28
Firmware Upgrade Utility	29
Specifications Chart	32
Troubleshooting	33
Compliance Information	33
Limited Warranty	33
Contact	33
FCC Information	34


Safety Instructions

- Safety Instructions
- Read all of these instructions. Save them for future reference
- This device is for indoor use only
- Follow all warnings and instructions marked on the device
- Do not place the device on any unstable surface (cart, stand, table, etc.). If the device falls, serious damage will result
- Do not use the device near water
- Do not place the device near, or over, radiators or heat registers
- The device cabinet is provided with slots and openings to allow for adequate ventilation. To ensure reliable operation, and to protect against overheating, these openings must never be blocked or covered
- The device should never be placed on a soft surface (bed, sofa, rug, etc.) as this will block its ventilation openings. Likewise, the device should not be placed in a built in enclosure unless adequate ventilation has been provided
- Never spill liquid of any kind on the device
- Unplug the device from the wall outlet before cleaning. Do not use liquid or aerosol cleaners. Use a damp cloth for cleaning
- The device should be operated from the type of power source indicated on the marking label. If you are not sure of the type of power available, consult your dealer or local power company
- Avoid circuit overloads. Before connecting equipment to a circuit, make sure never exceed the power supply's limit. Always review the electrical specifications of a circuit to ensure that you are not creating a dangerous condition. Circuit overloads may cause fire and destroy equipment.
- The device is designed for IT power distribution systems with 230V phase-to-phase voltage
- To prevent damage to your installation, it is important that all devices are properly grounded
- The device is equipped with a 3-wire grounding type plug. This is a safety feature. If you are unable to insert the plug into the outlet, contact your electrician to replace your obsolete outlet. Do not attempt to defeat the purpose of the grounding-type plug. Always follow your local/national wiring codes
- Do not allow anything to rest on the power cord or cables. Route the power cord and cables so that they cannot be stepped on or tripped over
- If an extension cord is used with this device, make sure that the total Ampere ratings of all products used on this cord does not exceed the extension cord Ampere rating. Make sure that the total of all products plugged into the wall outlet does not exceed 15 Amperes.
- To help protect your system from sudden, transient increases and decreases in electrical power, use a surge suppressor, line conditioner, or un-interruptible power supply (UPS)
- Position system cables and power cables carefully; Be sure that nothing rests on any cable

- Never push objects of any kind into or through cabinet slots. They may touch dangerous voltage points or short out parts resulting in a risk of fire or electrical shock
- Do not attempt to service the device yourself. Refer all servicing to qualified service personnel
- If the following conditions occur, unplug the device from the wall outlet and bring it to qualified service personnel for repair
- The power cord or plug has become damaged or frayed
- Liquid has been spilled into the device
- The device has been exposed to rain or water
- The device has been dropped, or the cabinet has been damaged
- The device exhibits a distinct change in performance, indicating a need for service
- The device does not operate normally when the operating instructions are followed
- Only adjust those controls that are covered in the operating instructions. Improper adjustment of other controls may result in damage that will require extensive work by a qualified technician to repair
- Do not connect the RJ-11 connector marked “SERIAL” to a public telecommunication network

Conventions

This manual uses the following conventions

Monospaced	Indicates text that you should key in
[]	Indicates keys you should press. For example, [Enter] means to press the Enter key.
1.	Numbered lists represent procedures with sequential steps
■	Bullet lists provide information, but do not involve sequential steps
→	Indicates selecting the option (on a menu or dialog box, for example), that comes next. For example, Start → Run means to open the <i>Start</i> menu, then select <i>Run</i>
	Indicates critical information

Overview

IOGEAR's GCS1932H/GCS1934H 2/4-Port 4K HDMI KVMP Switch combines KVM switch with HDMI video interface and with built-in 2-port USB 3.1 Gen 1 hub. The HDMI interface provides Cinema 4K @60Hz and 4K UHD @60Hz resolution, displaying the most vivid high-definition images available.

Control and switch two or four HDMI computers from a single set of USB keyboard, mouse and 4K HDMI monitor. The 4K HDMI Switch GCS1932H/GCS1934H enables fast port switching using front panel pushbuttons, hotkeys or mouse-port switching. EDID mode is built-in for a smoother power-up, high-quality display and increased monitor compatibility. Power on Detection feature ensures that if a connected computer is powered off, the GCS1932H/GCS1934H will automatically switch ports to the next powered on computer.

This 4K HDMI switch provides SuperSpeed 5 Gbps transfer rate to all connected USB peripherals via built-in USB 3.1 Gen 1 hub. GCS1932H/GCS1934H supports independent switching feature between KVM, USB and audio, allowing the switch focus to be on one computer while USB or audio focus is on another. For further customization, this 2/4-port 4K HDMI KVM switch provides audio mixing modes where you can combine up to two audio sources as output.

IOGEAR's GCS1932H/GCS1934H supports all of your 4K HDMI computer control and switch. With its user friendly operations, this 4K KVM delivers the utmost 4K solution while saving your desktop real estate.

Package Contents

GCS1932H

- 1 x 2-Port 4K USB HDMI KVMP Switch
- 2 x HDMI 2.0 cables¹
- 2 x USB cables
- 2 x Audio cables
- 1 x Power Adapter
- 1 x Quick Start Guide²

GCS1934H

- 1 x 4-Port 4K USB HDMI KVMP Switch
- 4 x HDMI 2.0 cables¹
- 4 x USB cables
- 4 x Audio cables
- 1 x Power Adapter
- 1 x Quick Start Guide²

1. 4K video resolution needs high quality HDMI cable
2. Features may have been added to the units since this manual was released. Please visit www.IOGEAR.com to download the most current manual

Features

- Control and switch between 2 or 4 HDMI computers from one USB keyboard, mouse and 4K HDMI monitor
 - EDID support – optimizes resolution when switching and eliminates booting up display problem and compatibility issue
 - Up to Cinema 4K (4096 x 2160 @60Hz) and 4K UHD (3840 x 2160 @60Hz) resolution
 - Computer selection via front panel pushbuttons, hotkeys, mouse¹ and RS-232 commands²
 - 2-port USB 3.1 Gen 1 hub with SuperSpeed 5 Gbps data transfer rates
 - Supports Console keyboard and mouse emulation/bypass feature
 - Supports independent switching of KVM, USB peripheral and Audio focus
 - Multilingual keyboard mapping – English, Japanese, French and German keyboards
 - Supports HD Audio³
 - Audio Mixer Modes – mixes up to two audio sources as audio input
 - Power on Detection – if a computer is powered off, the GCS1932H/GCS1934H automatically switches to the next powered-on computer
 - Hot pluggable – add or remove computer without turning the KVM off
 - Sun and Mac keyboard support and emulation⁴
 - Auto Scan Mode for monitoring all connected computers
 - Firmware upgradeable
 - Supports N-key Rollover⁵ (NKRO) – allows collision free key press
1. Supported using a USB 3-button wheel mouse and enabled mouse emulation
 2. Connect an RJ-11 to DB-9 cable for the KVM switch to receive RS-232 commands
 3. HD audio through HDMI channel cannot be switched independently
 4. PC keyboard combinations emulate Mac keyboards. Mac keyboards work with Mac OS®
 5. N-key Rollover supports up to 15 simultaneous keystrokes

Requirements

Console

- A 4K HDMI monitor
- A Standard USB 3-button wheel wired mouse
- A Standard USB 104-key wired keyboard
- Speakers (optional)

Computers

- An HDMI port with 4K resolution
- A USB-A port
- An Audio port (optional)

Cables

The quality of the display is affected by the quality of the cables. A total length not exceeding 20ft (10ft meters between PC and KVM switch plus 10ft between KVM switch on monitor) is recommended. Please only use the cables included in the package.

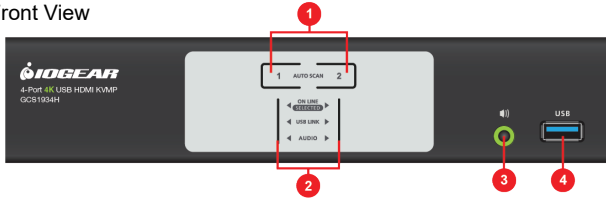
Operating Systems

Operating Systems

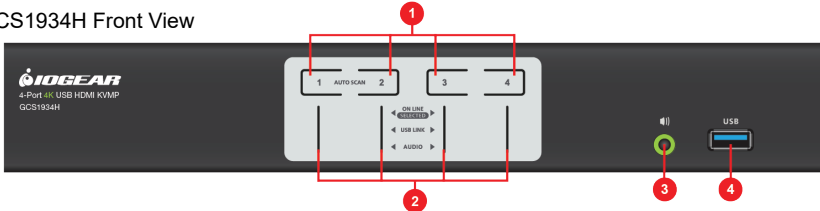
OS		Version
Windows		2000 / XP / Vista / 7 / 8 / 8.1 / 10 and higher
Linux	RedHat	6.0 and higher
	SuSE	8.2 and higher
	Mandriva (Mandrake)	9.0 and higher
Novell	Netware	5.0 and higher
Mac		OS 9 and higher
Dos		6.2 and higher

Components

GCS1932H Front View

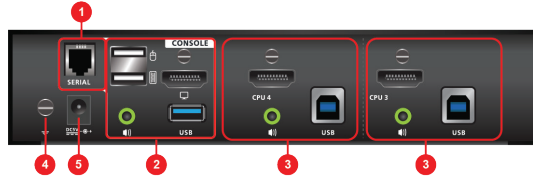


GCS1934H Front View

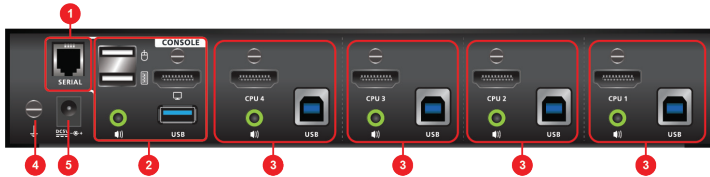


No.	Component	Description
1	Port Selection Pushbuttons	<p>For manual port selection (see Port Switching)</p> <ul style="list-style-type: none"> Press a button for less than 2 seconds to bring the KVM, USB and Audio focus to the computer of the corresponding port Press a button for longer than 2 seconds to bring only the KVM focus to the computer of the corresponding port Press a button twice to bring the audio focus to the computer of the corresponding port Press button 1 and 2 simultaneously for 2 seconds to start Auto Scan Mode For GCS1934H only, press button 3 and 4 simultaneously for 2 seconds to start Keyboard/Mouse reset
2	Port LEDs	<p>The Port LEDs are built into the Port Selection Pushbuttons. The upper LEDs are KVM Port LEDs, the lower LEDs are the USB LEDs:</p> <p>KVM</p> <ul style="list-style-type: none"> DIM ORANGE – computer of the corresponding port is connected (Online) BRIGHT ORANGE – computer of the corresponding port is on focus (Selected) FLASHES – computer of the corresponding port is under Auto Scan Mode <p>USB</p> <ul style="list-style-type: none"> GREEN – computer of the corresponding port has USB focus <p>AUDIO</p> <ul style="list-style-type: none"> GREEN – computer of the corresponding port has Audio focus
3	Audio Port	Speakers connected to these main audio ports will have priority over ones connected to rear panel
4	USB 3.1 Gen 1 Peripheral Port	USB peripheral (printer, scanners, drivers, etc) connected to these ports will be shared amongst connected computers

GCS1932H Back View



GCS1934H Back View



No.	Component	Description
1	RJ-11 Serial Port	Connect an RJ-11 to DB-9 cable for RS-232 serial commands
2	Console Port Section	Connect HDMI monitor, USB keyboard, USB mouse, USB peripherals and speakers set. Each connector is marked with the appropriate icon to indicate connections required
3	KVM Port Section	Connect HDMI computer using the included HDMI, USB and Audio cables. Each KVM port is marked with the appropriate icon to indicate connections required
4	Grounding Terminal	Connect grounding wire (not included) to ground the GCS1932H/GCS1934H
5	Power Jack	Connect the included power adapter

Sound	Description
1 Beep	<ul style="list-style-type: none"> Changing Port Activating Auto-Scan Mode Pausing/Resuming Auto-Scan Enabling/Disabling Auto Mixer Invalid Command
2 Beeps	<ul style="list-style-type: none"> Interrupting Auto-Scan Entering Keyboard Emulation OFF mode Finishing USB synchronization
1 Long Beep	<ul style="list-style-type: none"> KVM Powered ON KVM Reset

Hardware Installation

Please read **Safety Instructions** before proceeding with installation

Please make sure that all devices including the GCS1932H/GCS1934H, HDMI monitor, and computers are powered **OFF**

1. To prevent damages from power surges or static electricity, ground the KVM by connecting one end of a grounding wire (grounding wire not included) to the grounding terminal and the other end to a suitable grounded object. Please also make sure that the computers and devices connected are also properly grounded.
2. Connect the USB keyboard and the USB mouse to the GCS1932H/GCS1934H Console ports located on the rear side panel
3. Connect the HDMI monitor to the GCS1932H/GCS1934H Console HDMI port located on the rear side panel
4. Turn HDMI monitor power to **ON**
5. Connect main speakers into the GCS1932H/GCS1934H speaker jacks located on the front side panel (optional). Speakers connected into this front port have priority over those connected on the rear port of GCS1932H/GCS1934H
6. Connect secondary speakers into the GCS1932H/GCS1934H Console speaker jacks located on the rear panel (optional).
7. Using the provided cables from IOGEAR,
 - Connect the provided HDMI connector into any available HDMI port in the KVM Port section of the GCS1932H/GCS1934H
 - Connect the provided USB and speaker connector into their corresponding USB and speaker ports on the GCS1932H/GCS1934H
 - Connect the other end of the KVM cables into their respective HDMI, USB, and speaker ports on the computers
8. Plug up to two USB peripherals into the USB type A ports in the USB3.1 Gen 1 hub section (front and rear panel of the GCS1932H/GCS1934H)
9. Connect the provided power adapter to an AC power source. Then, connect the power adapter cable into the GCS1932H/GCS1934H power jack.
10. Turn all connected computers power to **ON**

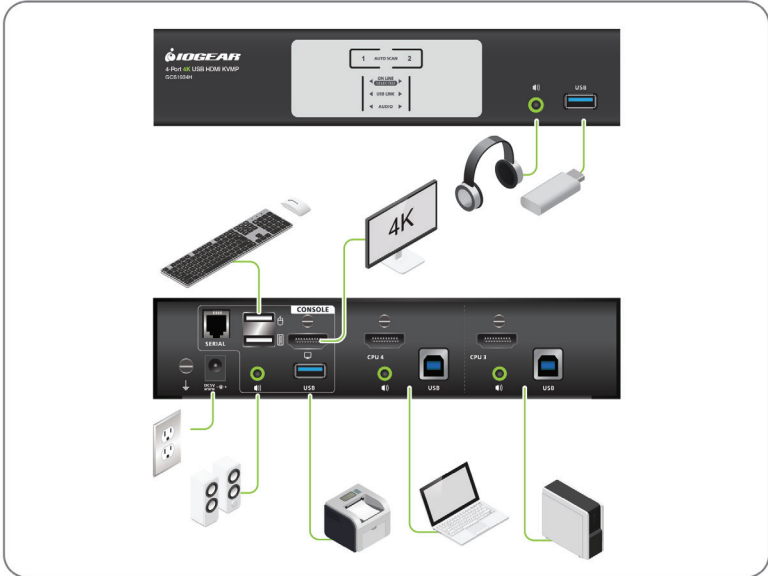
Note

Verify that all the connectors are on the same KVM Port sockets (all in Port 1, all in Port 2, etc.) and that each socket is marked with an appropriate icon to indicate itself

We recommend that the total cable length from PC to the monitor (including the GCS1932H/GCS1934H) does not exceed 20 feet and the GCS1932H/GCS1934H to be powered **ON** at all times.

Installation Diagram

GCS1932H



GCS1934H



Port Switching

There are three convenient methods to access the computer:

- a. Manual – involves pressing the port selection pushbuttons located on the GCS1932/1934's front panel
- b. Hotkey – involves entering combinations from the keyboard (see Hotkey Operation section for details)
- c. Mouse – involves pressing the mouse wheel button (clicking it twice) to switch between ports (see Mouse Emulation and Mouse Port Switching section for more details)
- d. RS-232 – involves connecting RJ-11 to DB-9 cable to the RS-232 port and the computer

Note: If Audio Mixer Mode is enabled, Audio focus switching will be altered. Please refer to *Stereo Audio Mixer*

Manual Switching

For manual port switching:

1. Press and release a port selection pushbutton to bring the KVM, USB and Audio focus to the computer of the corresponding port
2. Press and hold a button for more than 2 seconds to bring the KVM focus to the computer of corresponding port. The USB and Audio focus stay with the port they are already on
3. Press a button twice to bring the audio focus to the computer of the corresponding port
4. Press and hold button 1 and 2 for more than 2 seconds to activate Auto Scan Mode
5. Press and release either button to stop Auto Scan Mode. The KVM focus will go to the computer of the corresponding port pressed.

Mouse Switching

For mouse port selection:

1. Enable Mouse Emulation (see Mouse Emulation)
2. Enable Mouse Switching (see Mouse Switching)
3. Double click the scroll wheel of your wired USB 3-button mouse to cycle through the ports

Hotkey Switching

For Hotkey port selection, begin by pressing [**Scroll Lock**] twice. Please see details on Hotkey Operation

RS-232 Commands

For RS-232 port selection, please refer to GCS1932H/GCS1934H RS-232 Commands User Manual for more details. You would need to enter the correct command and control to switch port.

Hot Plugging

IOGEAR's GCS1932H/GCS1934H supports USB hot plugging. Computer and peripherals can be added and removed to the installation without the need to turn them off

Powering Off and Restarting

Please do following steps before turning off the GCS1932H/GCS1934H

1. Turn off all computers connected to the GCS1932H/GCS1934H
2. Disconnect the KVM's power adapter cable
3. Wait for 10 seconds and reconnect the power adapter cable
4. Once the KVM is powered up, turn all connected computers ON

Port ID Numbering

The Port ID is used to specify which connected computer receives the KVM, USB peripheral and/or audio focus with the hotkey port selection method. Each KVM port section on the GCS1932H/GCS1934H is assigned to a port number 1 to 2 (GCS1932H) or 1 to 4 (GCS1934H), for example: computer connected to KVM port 1 has Port ID 1, computer connected to KVM port 2 has Port ID 2 and so on.

Alternative Manual Port Selection Settings

When Hotkey Setting Mode has been activated, pressing [S] will invoke the alternative front panel pushbutton port selection:

- Press a button once to bring only the KVM focus to the computer of corresponding port
- Press a button twice to bring the audio focus to the computer of corresponding port
- Press and hold a button for more than 2 seconds to bring the KVM, audio and USB focus to the computer of corresponding port
- Press and hold button 1 and 2 for more than 2 seconds to start Auto Scan Mode

Hotkey Operation

IOGEAR's GCS1932H/GCS1934H provides an extensive, user friendly, hotkey function for a convenient control over your KVM installation using a wired 104-key USB keyboard.

Hotkey Port Switching

All port switches begin by clicking [Scroll Lock] twice

Note: If using [**Scroll Lock**] conflicted with other programs running, [**Ctrl**] key can be used instead. Please see Alternative Port Switching for details

There are 2 audio mixer functions that will alter the audio port switching function described in the following section. Please refer to Stereo Audio Mixer for more details

Cycling Through the Ports

Hotkey	Function
[Scroll Lock][Scroll Lock][Enter]	Brings the KVM , USB hub, and Audio focus to the next higher port (1 to 2; 2 to 3; 3 to 4; 4 to 1). Note: The KVM, USB hub, and Audio focus all go to this port even if they were on different ports to begin with.
[Scroll Lock][Scroll Lock][K][Enter]	Brings only the KVM to the next higher port. The USB and audio focus remain where they are.
[Scroll Lock][Scroll Lock][U][Enter]	Brings only the USB to the next higher port* The KVM and audio focus remain where they are.
[Scroll Lock][Scroll Lock][S][Enter]	Brings only the Audio to the next higher port. The KVM and USB hub remain where they are.
[Scroll Lock] [Scroll Lock] [n][Enter]	Brings the KVM, USB hub, and Audio focus to computer attached to [n] port [n] stands for the computer's Port ID number. Replace [n] with the appropriate Port ID when entering hotkey combinations Note The KVM, USB hub, and Audio focus all go to this port even if they were on different ports to begin with
[Scroll Lock][Scroll Lock][n][K][Enter]	Brings only the KVM to the computer on [n] port The USB hub and audio focus remain where they are

[Scroll Lock][Scroll Lock][n][U][Enter]	Brings only the USB hub focus to the computer on [n] port The KVM and audio focus remain where they are
[Scroll Lock][Scroll Lock][n][S][Enter]	Brings only the Audio to the computer on [n] port The KVM and USB hub focus remain where they are
[Scroll Lock][Scroll Lock][n][K][U][Enter]	Brings the KVM and the USB hub focus to the computer on [n] port The audio focus remain where it is
[Scroll Lock][Scroll Lock][n][K][S][Enter]	Brings the KVM and Audio focus to the computer on [n] port The USB hub focus remain where it is
[Scroll Lock][Scroll Lock][n][U][S][Enter]	Brings the USB hub and Audio focus to the computer on [n] port The KVM focus remain where it is

Note

The [n] stands for the computer's Port ID number (GCS1932H: 1 or 2, GCS1934H: 1, 2, 3 or 4) Replace [n] with the appropriate Port ID when entering Hotkey combinations

Auto Scanning

GCS1932H/GCS1934H Auto Scan feature will automatically cycles through the KVM focus at regular intervals. This enables user to monitor computers activity without having to manually switch from port to port

Hotkey	Function
[Scroll Lock][Scroll Lock][A][Enter]	Invokes Auto Scan The KVM focus cycles from port to port at 5 seconds (default) intervals
[Scroll Lock][Scroll Lock][A][n][Enter]	The KVM focus cycles from port to port at [n] second intervals

Note

1. The [n] stands for the number of seconds that the GCS1932H/GCS1934H should dwell on a port before moving on to the next port. Replace [n] with a number between 1 and 99 when entering this hotkey combination.
2. While Auto Scan Mode is in effect, ordinary keyboard and mouse functions are suspended – only Auto Scan Mode compliant keystrokes and mouse clicks can be input. You must exit Auto Scan Mode in order to regain normal control of the console
3. Although the video focus switches from port to port, the keyboard, mouse, and USB focus do not switch. They stay at the port they were on when Auto Scanning started
4. To exit Auto Scan Mode, press [Esc] or [Spacebar]

Hotkey Setting Mode (HSM)

All hotkey operations begin by invoking HSM:

1. Press and hold down [Num Lock]
2. Press and release [-]
3. Release [Num Lock]

Alternative key combination below can be used to invoke HSM, please see Alternate HSM Invocation keys for more details.

When HSM is active, Caps Lock and Scroll Lock LEDs flash in succession. They will stop flashing and revert to normal status when exiting HSM.

While on HSM, ordinary keyboard and mouse function are suspended – only Hotkey compliant keystrokes and mouse clicks can be input

To exit HSM manually, press [Esc] or [Spacebar]

Alternative HSM Invocation Keys

An alternative set of HSM invocation keys can be used in case the default set conflicts with programs running on the computers

To switch to alternate HSM invocation set:

1. Invoke HSM
2. Press and Release [H] The HSM invocation keys become [Ctrl] instead of [Num Lock] and [F12] instead of [-]

This procedure is a toggle between the two methods. To revert to the default HSM invocation keys, invoke HSM then press and release [H] again.

Alternate Port Switching Keys

An alternate way of activating port switching is by pressing [Ctrl] key twice instead of [Scroll Lock]. To use the alternate port switching hotkeys:

1. Invoke HSM
2. Press and release [T]

This procedure is a toggle between the two methods. To revert to the default port switching method, invoke HSM and press and release [T] again

Default EDID Mode

EDID feature eliminates monitor compatibility issue. To enable/disable EDID mode"

1. Invoke HSM
2. Press **[V]** **[Enter]**

This procedure is a toggle between the two methods. To revert to the default port switching method, invoke HSM and press and release **[V]** **[Enter]** again

Buzzer Control

To turn on or off buzzer:

1. Invoke HSM
2. Press and release **[B]**

This procedure is a toggle between the two methods. To revert to the default port switching method, invoke HSM and press and release **[B]** again

Firmware Upgrade Mode

To enter firmware upgrade mode:

1. Invoke HSM
2. Type in **[U][P][G][R][A][D][E]**
3. Press **[Enter]**

The front panel LEDs will flash, indicating that Firmware Upgrade Mode is in effect. Please see Firmware Upgrade Mode for more details. Power the GCS1932H/GCS1934H off to exit from Firmware Upgrade Mode

Hotkey Port Switching

To enable or disable hotkey port switching:

1. Invoke HSM
2. Press **[X]****[Enter]**

This procedure is a toggle between the two methods. To revert to the default port switching method, invoke HSM and press and release **[X]****[Enter]** again

When disabled, port switching hotkeys [Scroll Lock][Scroll Lock] and [Ctrl][Ctrl] will not work

Keyboard Emulation Control

To enable or disable keyboard emulation:

1. Invoke HSM
2. Press **[N]**

This procedure is a toggle between the two methods. To revert to the default port switching method, invoke HSM and press and release **[N]** again

Keyboard Language Layout

To select keyboard layout

3. Invoke HSM
4. Press **[F6][n][n][Enter]**

[n][n] are two digits representing the keyboard language code

English (US): 33

French: 08

German: 09

Japanese: 15

Keyboard Operating Platform

IOGEAR's GCS1932H/GCS1934H's default port configuration is for PC compatible keyboard operating platform. For example, if your console uses a PC compatible keyboard and you have a Mac or Sun attached to a port, you can change the port's keyboard operating platform configuration so that the PC compatible keyboard emulates the Mac or Sun keyboard. To enable different the different platform:

1. Bring the KVM focus to the port you would like to set keyboard operating platform to
2. Invoke HSM
3. Press and release function key listed on table below

Key	Function
[F1]	To set the keyboard/mouse in SPC mode so it works under special operating system as a standard (104 key) keyboard/mouse
[F2]	Enables Mac keyboard emulation, see Mac Keyboard Emulation .
[F10]	Disables keyboard emulation. Key presses are passed straight through. You're your console uses a Mac keyboard to access a Mac attached to a port, for example. Automatically detects and sets the keyboard operating platform

4. After this procedure is completed, you will automatically exit HSM

Advance Configuration

List Switch Settings

To see a listing of current switch setting:

1. Open a text editor or word processor and place the cursor in the page window
2. Invoke HSM
3. Press and release **[F4]** to display the settings

Mouse Emulation Control

To enable or disable mouse emulation:

1. Invoke HSM
2. Press **[M]**

This procedure is a toggle between the two methods. To revert to the default port switching method, invoke HSM and press and release **[M]** again

Mouse Port Switching

To enable or disable mouse port switching:

1. Invoke HSM
2. Press **[W]**

This procedure is a toggle between the two methods. To revert to the default port switching method, invoke HSM and press and release **[W]** again

N-Key Rollover Keyboard Supporting Function

Enabling N-key Rollover allows up to 15 simultaneous keystrokes. To enable or disable N-key Rollover:

1. Invoke HSM
2. Press **[K][Enter]**

This procedure is a toggle between the two methods. To revert to the default port switching method, invoke HSM and press and release **[K][Enter]** again

Power on Detection

To enable or disable power on detection:

1. Invoke HSM
2. Press **[E]**

This procedure is a toggle between the two methods. To revert to the default port switching method, invoke HSM and press and release **[E]** again

Restore Default Settings

To reset to factory hotkey settings

1. Invoke HSM
2. Press **[R][Enter]**

Stereo Audio Mixer

Stereo audio mixer feature enables mixing up to two audio sources and output the mixed audio to the speakers. There are two ways to mix the audio:

1. Single Focus Audio Mixing Mode

- This mode would fix one audio source to a port while letting the second audio source to combined with the fixed audio source. Then the two audio sources will be mixed as audio output to speakers. The second audio source follows the KVM and can be selected using pushbutton, hotkey or mouse wheel.
- Invoke HSM
- Press **[A][P][n][Enter]**

The [n] stands for the computer's Port ID number (GCS1932H: 1 or 2, GCS1934H: 1, 2, 3 or 4)

Double Focus Audio Mixing Mode

This mode will fix two audio sources and mix them as audio output

1. Invoke HSM
2. Press **[A][R][n][m][Enter]**

The [n] [m] stand for the computer's Port ID number (GCS1932H: 1 or 2, GCS1934H: 1, 2, 3 or 4) and they cannot be the same port

Disabling Audio Mixing

To disable Stereo Audio Mixer Mode:

1. Invoke HSM
2. Press **[A][O][Enter]**

USB Reset

If the USB connection loses focus and needs to be reset:

1. Invoke HSM
2. Press and release **[F5]**

HSM Summary Table

Key	Function
[F1]	Sets the keyboard and mouse to SPC mode so that it works under special operating systems as standard 104-key keyboard and mouse
[F2]	Enable Mac keyboard emulation
[F3]	Enable Sun keyboard emulation
[F4]	List out GCS1932H/GCS1934H current hotkey settings via text editor or word processor
[F5]	USB keyboard and mouse reset
[F6][n][n][Enter]	Set the keyboard language layout. [n][n] represents the language code English (US): 33 French: 08 German: 09 Japanese: 15
[F10]	Enable Windows keyboard emulation
[A][P][n][Enter]	Enable Single Focus Audio Mixing Mode. [n] represents port ID (GCS1932H: 1 or 2, GCS1934H: 1, 2, 3 or 4)
[A][P][n][m][Enter]	Enable Single Focus Audio Mixing Mode. [n] and [m] represents port ID (GCS1932H: 1 or 2, GCS1934H: 1, 2, 3 or 4) and cannot be the same number
[A][O][Enter]	Disable Audio Mixing Mode
[B]	Enable or disable buzzer feature
[E]	Enable or disable Power on Detection feature
[H]	Toggle between default and alternative HSM invocation keys
[K][Enter]	Enable or disable N-key Rollover feature
[M]	Enable or disable mouse emulation
[N]	Enable or disable keyboard emulation
[R][Enter]	Reset hotkey setting to factory
[T]	Toggle between default and alternative Port Switching keys
[u][p][g][r][a][d][e]	Invokes Firmware Upgrade Mode
[V][Enter]	Enable or Disable default EDID Mode
[W]	Enable or Disable Mouse Port Switching. When enabled, double click the mouse wheel to switch to the next port. Mouse Emulation must be enabled
[X][Enter]	Enable or disable Hotkey Port Switching
[Esc] or [Spacebar]	Exit HSM
[S]	Toggle between default and alternative Manual Port Selection Pushbutton Settings

Firmware Upgrade Configuration

GCS1932H/GCS1934H is firmware upgradable, enabling recent firmware upgrade for added compatibilities or bug fixing. The Windows based (.exe) file is posted on www.IOGEAR.com. Please check the website for most current up to date firmware

Before Starting Firmware Upgrade

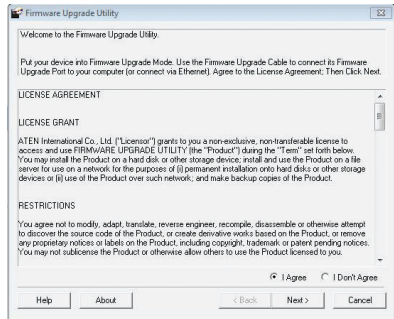
In order to perform a firmware upgrade, please need use a computer that is not connected to the GCS1932H/GCS1934H. To set GCS1932H/GCS1934H in Firmware Upgrade Mode:

1. From a computer that is not part of the KVM installation, go to www.iogear.com/product/GCS1932H or www.iogear.com/product/GCS1934H to get a list of available Firmware Upgrade Packages
 2. Choose the Firmware Upgrade Package (usually the most recent one), and download it to a computer that is not part of the KVM installation
 3. Disconnect the GCS1932H/GCS1934H from the KVM installation and power the switch OFF.
 4. Connect one of the USB DisplayPort KVM cable set's Type A USB connectors to a USB Type A port on the computer that is not part of your KVM installation
 5. At the other end of the cable set, connect the USB Type B connector to the Type B USB port in Port 1 KVM section on the GCS1932H/GCS1934H.
 - Note: The USB DisplayPort KVM cable set's USB Type B connector can be connected to any USB Type KVM Port Section, but the Port Selection pushbutton in Step 6 below must be Port 1
 6. Two ways to invoke Firmware Upgrade Mode:
 - Press and hold Port 1 selection pushbutton. While holding Port 1 selection pushbutton, connect the power adapter to the GCS1932H/GCS1934H to enter Firmware Upgrade Mode.
- or
- Invoke HSM and press [u][p][g][r][a][d][e]
7. The front panel LEDs will flash together, indicating Firmware Upgrade Mode is in effect.

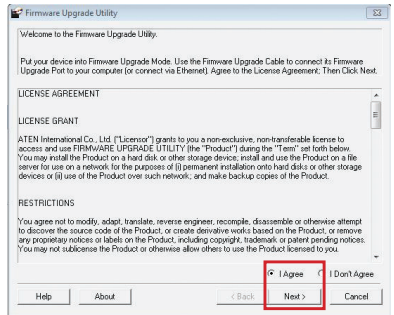
Starting Firmware Upgrade

Run the downloaded Firmware Upgrade Package file – either by double clicking the file icon, or using a command line to enter the full path.

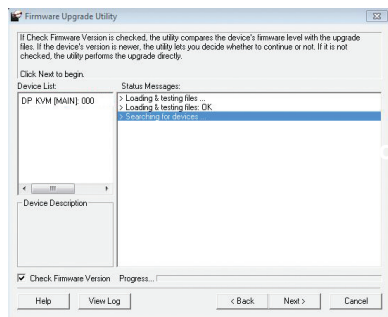
1. The Firmware Upgrade Utility Welcome screen appears.



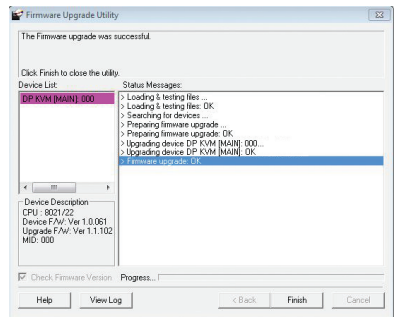
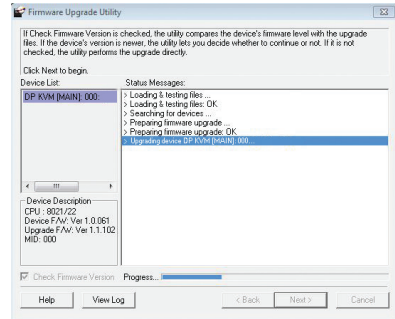
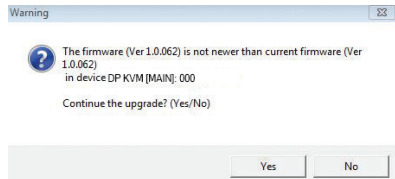
2. Read the License Agreement and click “I Agree” button and click “Next”.



3. The Firmware Upgrade Utility main screen appears. The Utility inspects your installation. All the devices capable of being upgraded by the package are listed in the Device List panel.
4. As you select a device from the list, the device’s description appears in the Device Description panel. After you have made your device selection(s), Click “Next” to perform the upgrade



5. If you enabled Check Firmware Version, the Utility compares the device's firmware level with that of the upgrade files. If the device's version is higher than the upgrade version, a dialog box below will give you the option to Continue or Cancel.
6. If you did not enable Check Firmware Version, the Utility installs the upgrade files without checking whether they are of higher level, or not.
7. As the Firmware Upgrade proceeds, a vstatus message will appear in the Status Messages panel, and the progress toward completion is shown on the Progress bar
8. After the upgrade has completed, a screen appears to inform you that the procedure was successful. Click Finish to close the Firmware Upgrade Utility.
9. After a successful completion, the GCS1932H/GCS1934H will exit the Firmware Upgrade Mode and resets itself.
10. If the GCS1932H/GCS1934H is under DCC mode installation, then please be sure to reconnect the cable connected to the DCC port and set the DCC switch on the Client KVM switch back to "s" (*Client*) (see **Six-Display DCC Mode**)



Firmware Upgrade Fail

If the Upgrade Succeeded screen does not appear, this means that the upgrade failed to complete successfully. If this occurs, please follow below steps:

1. Power off the GCS1932H/GCS1934H by removing the power adapter
2. Invoke Firmware Upgrade Mode by holding down the Mode Selection pushbutton on the front panel (see **Mode Selection Pushbutton**) and power on the GCS1932H/GCS1934H. The orange LEDs flash together.
3. Repeat the upgrade procedure from the beginning (see **Before Starting Firmware Upgrade**).

Specifications Chart

Function		GCS1932H	GCS1934H	
Computer Connections		2	4	
Port Selection		Pushbutton, Hotkey, Mouse, RS-232 Commands		
Connectors	Console Ports	Keyboard	1 x USB Type-A Female	
		Mouse	1 x USB Type-A Female	
		Video	1 x HDMI Female (black)	
		Speakers	2 x 3.5mm Audio Jack Female (Green, 1 x front and 1 x rear)	
	KVM Ports	KB / Mouse	2 x USB Type-B Female (blue)	4 x USB Type-B Female (blue)
		Video	2 x HDMI Female (black)	4 x HDMI Female (black)
		Speakers	2 x 3.5mm Audio Jack Female (Green)	4 x 3.5mm Audio Jack Female (Green)
	Power		1 x DC Jack	
	USB Hub		2 x USB Type-A Female (Blue, 1 x front, 1 x rear)	
	Serial		1 x RJ-11 Female	
Switches	Selector	2 x Pushbutton	4 x Pushbutton	
LED	Online / Selected	2 (Orange)	4 (Orange)	
	Audio	2 (Green)	4 (Green)	
	USB Link	2 (Green)	4 (Green)	
Emulation	Keyboard / Mouse	USB		
Video		4096 x 2160 @60Hz		
Scan Interval		1 – 99 seconds (default 5 seconds)		
Power Consumption		DC 5V: 1.78W : 50.97 BTU	DC 5V: 2.535W : 54.5 BTU	
Environment	Operating Temperature	0-40C		
	Storage Temperature	-20-60C		
	Humidity	0-80% RH, Non-condensing		
Physical Properties	Housing	Metal, plastic		
	Weight	1.63lb	2lb	
	Dimensions (L x W x H)	8.3 x 3.5"x2.2"	10.6"x3.5"x2.2"	

*Mouse emulation mode and mouse port switching mode must be turned on for mouse port switching with 3-button wheel USB mouse

Troubleshooting

Operation problems occur due to variety of causes. The first step in solving them is to make sure that all cables are securely attached and plugged in completely in their sockets.

In addition, updating the GCS1932H/GCS1934H firmware may solve problems that have been discovered and resolved since the prior version was released. If your product is not running the latest firmware version, we strongly recommend that you upgrade. See **The Firmware Upgrade Utility** for upgrade details.

Limited Warranty

Warranty Information

This product carries a 3 Year Limited Warranty. For the terms and conditions of this warranty, please go to <https://www.iogear.com/support/warranty>

Register online at <https://www.iogear.com/registration>

Important Product Information

Product Model _____

Serial Number _____

Contact

WE'RE HERE TO HELP YOU! NEED ASSISTANCE SETTING UP THIS PRODUCT?

Make sure you:

1. Visit **www.iogear.com** for more product information
2. Visit **www.iogear.com/support** for live help and product support

IOGEAR

www.iogear.com

iogear.custhelp.com

support@iogear.com

FCC Information

FEDERAL COMMUNICATIONS COMMISSION STATEMENT:

This equipment has been tested and found to comply with the limits for a Class A digital device, pursuant to part 15 of the FCC Rules. These limits are designed to provide reasonable protection against harmful interference when the equipment is operated in a commercial environment. This equipment generates, uses, and can radiate radio frequency energy and, if not installed and used in accordance with the instruction manual, may cause harmful interference to radio communications. Operation of this equipment in a residential area is likely to cause harmful interference in which case the user will be required to correct the interference at his own expense.

FCC Caution: Any changes or modifications not expressly approved by the party responsible for compliance could void the user's authority to operate this equipment.

Warning: Operation of this equipment in a residential environment could cause radio interference.

This device complies with Part 15 of the FCC Rules. Operation is subject to the following two conditions:

1. this device may not cause harmful interference, and
2. this device must accept any interference received, including interference that may cause undesired operation.

CE Statement

This device has been tested and found to comply with the following European Union directives: Electromagnetic Capability (2014/30/EU) and Low Voltage (2006/95/EC).

WARNING: This product may expose you to chemicals including Cadmium which is known to the State of California to cause cancer, birth defects or other reproductive harm. For more information, go to www.P65Warnings.ca.gov

