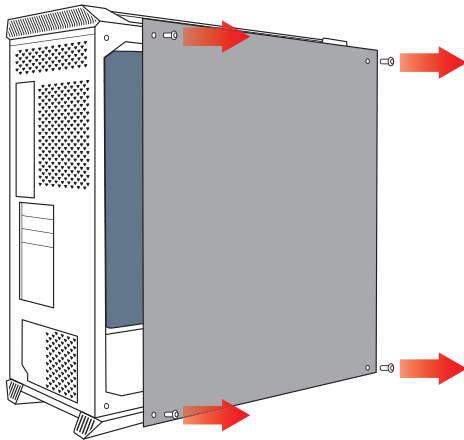
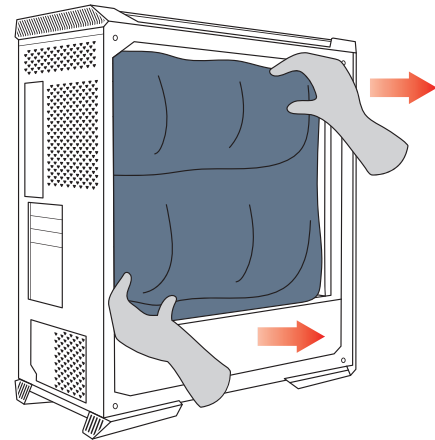


If you have any further questions regarding your new computer, please do not hesitate to contact us either through the online customer service site <https://us.msi.com/support> or by contacting our customer support at **1-626-271-1004**, Monday to Friday from 9:00 a.m. to 6:00 p.m. Pacific Standard Time. You can also contact technical support by calling **1-888-447-6564**, Monday to Friday from 5:00 a.m. to 4:00 a.m. Pacific Standard Time. We will reply to you as soon as possible.



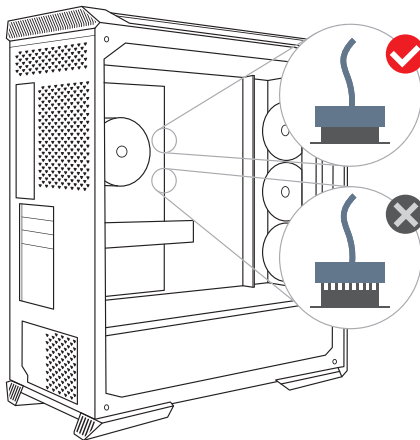
Step 1 REMOVE THE TEMPERED GLASS SIDE PANEL

Remove the four thumbscrews on the tempered glass side panel. And gently remove the tempered glass panel away from the case and place it in a safe area.



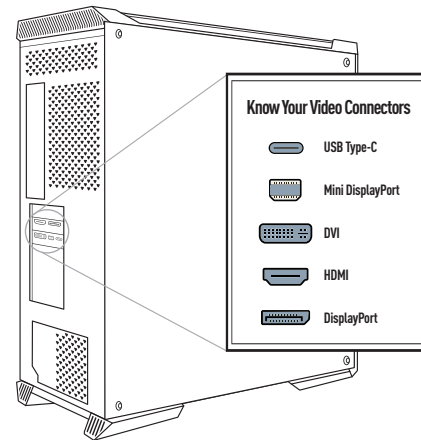
Step 2 REMOVE THE FOAM PACKAGING

Carefully pull the foam packaging out the system. It should come out easily without having to apply any force.



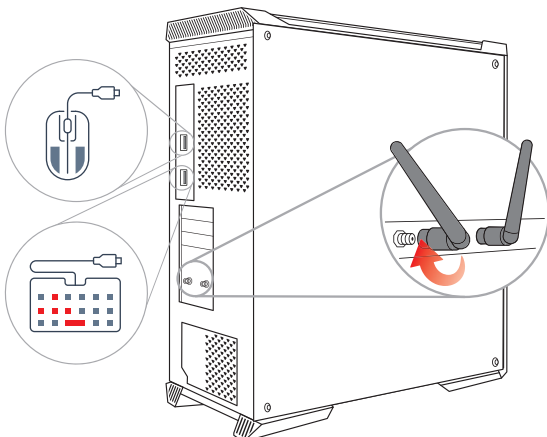
Step 3 INSPECT YOUR PC

Make sure all components and cables are seated firmly. Now, you can replace the tempered glass side panel and secure with thumbscrews.



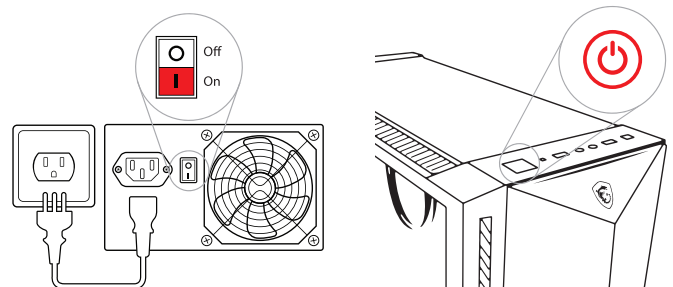
Step 4 CONNECT YOUR MONITOR

Connect your monitor to either display ports or HDMI ports on the graphics cards.



Step 5 CONNECT WIFI ANTENNAE, KEYBOARD & MOUSE

Screw the Wi-Fi Antennae to the gold contact points on the rear of the case. Plug the mouse and the keyboard into any of the USB ports.



Step 6 POWER ON YOUR DESKTOP

Plug the power cable into the power cable socket and plug the other end of the power cable into a power outlet. Turn the power supply switch on by having the "I" symbol on the switch pressed down. Press the power button.