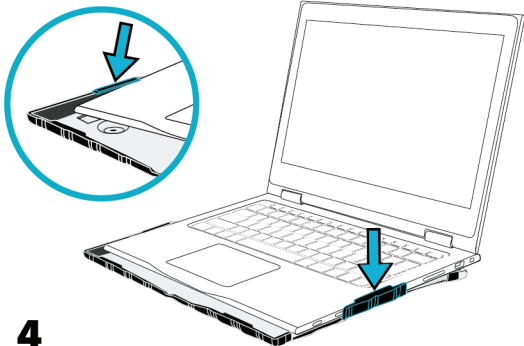


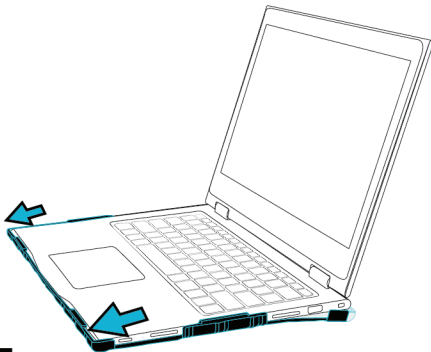
1

Slide one side of the keyboard under the bottom case's side clip. Press the other side of the keyboard down to snap into the side clip securely.



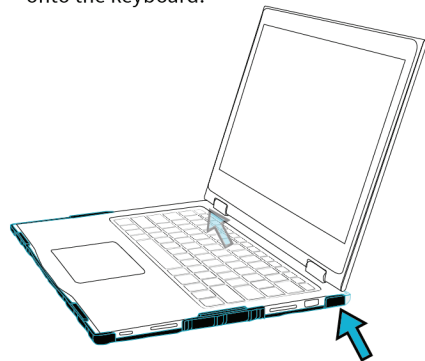
2

Push the keyboard forward until it is flush with the front edge of the bottom case.



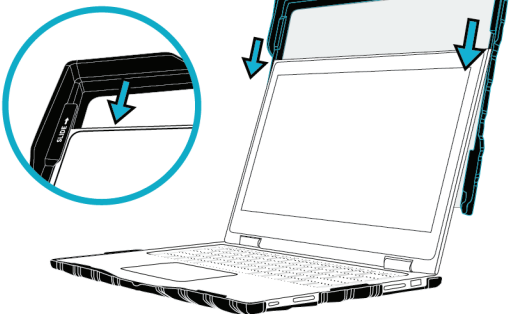
3

Carefully press the rear corner clips to snap onto the keyboard.



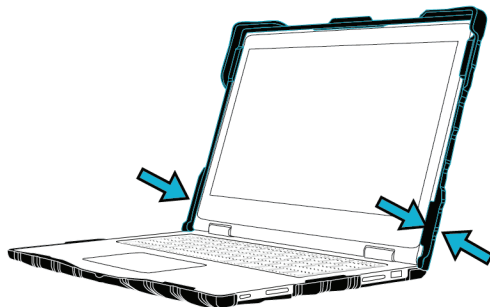
4

Slide the top case down, to secure the screen behind the side clips, until the device reaches the case's top edge.

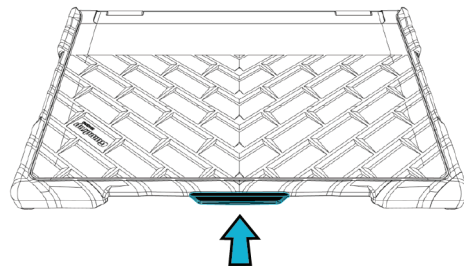


5

Press the lower side clips over the device, with pressure from both sides, to snap into place securely.



Once successfully installed, open the case by using the center lift tab only!



REMOVAL

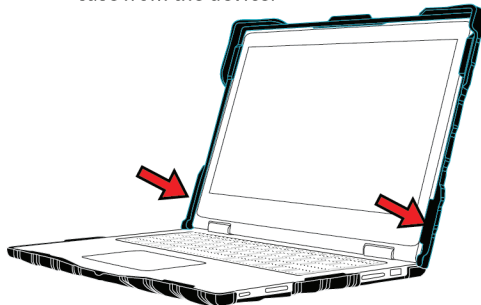
Gumdrop

CRITICAL!
FOLLOW STEPS 1 AND 2 IN ORDER



1

Push the lower left and right side clips outward to release the bottom of the top case from the device.



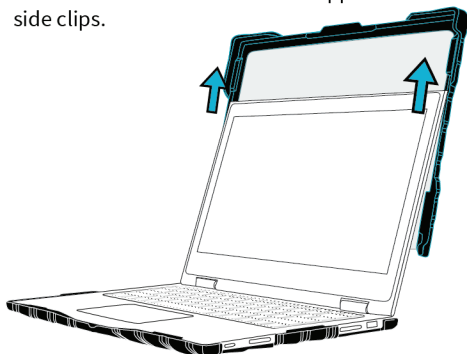
2

Start sliding the top case off by pushing up with your fingers on the bottom corners.



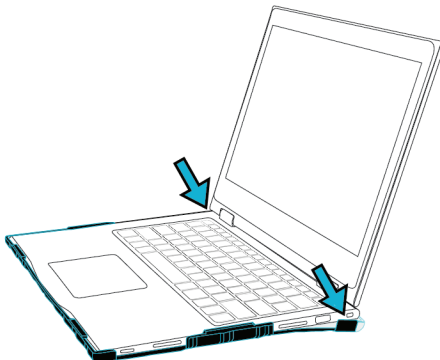
3

Gently slide the top case up and off the device to release it from the upper side clips.



4

Gently push the rear clips down to unhook from the device.



5

Push the left and right side clips down past the device, one side at a time, to release it from the bottom case.

