



**xCapture Pro**  
**Version 2.0**  
**User's Guide**

© 2015 Xplore Technologies Corporation of America. All rights reserved.

This document contains information protected by copyright. No part of this document may be reproduced in any form without written consent from Xplore.

The information in this document is provided "as is" and is subject to change without notice. Xplore is not liable for errors or omissions in this document.

Xplore, Motion by Xplore, View Anywhere, and QuickNav are trademarks or registered trademarks of Xplore Technologies Corporation of America. in the U.S.A. and other countries.

Acrobat is a registered trademark of Adobe Systems Incorporated.

Bluetooth is a registered trademark owned by the Bluetooth SIG, Inc., U.S.A. and licensed to Xplore Technologies Corporation of America.

Intel, Intel Atom, Core, vPro, and Centrino are trademarks or registered trademarks of Intel Corporation or its subsidiaries in the United States and other countries.

Computrace is a registered trademark of Absolute Software Corp.

OmniPass is a trademark of Softex, Inc.

Realtek is a trademark of Realtek Semiconductor Corporation.

Watcher and Skylight are registered trademarks of Netgear.

Microsoft, Windows, and Windows Journal are trademarks or registered trademarks of Microsoft Corporation in the United States and/or other countries.

Qualcomm, Gobi, and Gobi 5000 are trademarks or registered trademarks of Qualcomm Incorporated.

Wi-Fi is a registered trademark of the Wi-Fi Alliance.

HDMI, the HDMI logo, and High-Definition Multimedia Interface are trademarks of HDMI Licensing LLC in the United States and other countries.

AMI and AMI Aptio are trademarks of American Megatrends, Inc.

End users may not loan, rent, lease, lend, or otherwise transfer the CDs or DVDs provided for recovery purposes to another user, except as permitted in the End User License Agreement for such product.

This product incorporates copy protection technology that is protected by U.S. and foreign patents, including patent numbers 5,315,448 and 6,836,549, and other intellectual property rights. The use of Macrovision's copy protection technology in the product must be

authorized by Macrovision. Reverse engineering or disassembly is prohibited.

Xplore Technologies has made every effort to identify trademarked properties and owners on this page. All brands and product names used in this document are for identification purposes only and may be trademarks or registered trademarks of their respective companies.

The warranties for Xplore products are set forth in the express limited warranty statements accompanying such products. Nothing in this document constitutes an additional warranty.

The Motion by Xplore products and services may be covered by one or more patent-protected inventions. Additional patents may also be pending. For more information, see [www.motioncomputing.com/us/legal/patents](http://www.motioncomputing.com/us/legal/patents).

The end user may access only one operating system language version.

L'utilisateur final ne peut accéder qu'à une seule version linguistique du système d'exploitation.

Der Endbenutzer darf nur auf eine Sprachversion des Betriebssystems zugreifen.

De eindgebruiker heeft slechts toegang tot één taalversie van het besturingssysteem.

L'utente finale può accedere a una sola lingua del sistema operativo.

El usuario final sólo podrá acceder a una versión de idioma del sistema operativo.

Loppukäyttäjä voi käyttää vain yhtä käyttöjärjestelmän kieliversiota.

Användaren har endast tillgång till en språkversion av operativsystemet.

Slutbrugeren har kun adgang til ét af operativsystemets sprogversioner.

Sluttbruker kan aksessere kun én av operativsystemets språkversjoner.

O utilizador final pode alcançar somente uma versão de língua do sistema de exploração.

O usuário final pode acessar apenas uma versão de idioma do sistema operacional.

# Contents

<b>Chapter 1</b>	<b>Getting Started</b>	<b>1</b>
Introduction		1
Features and Benefits		1
<b>Chapter 2</b>	<b>Using xCapture Pro</b>	<b>2</b>
Starting xCapture Pro		2
Launch Using the Desktop Shortcut		2
Launch Using the Start Menu		2
xCapture Pro Modes		3
Picture Capture Mode		3
Video Capture Mode		4
Code Capture Mode		5
QR Code Mode		6
View, Edit, and Share Picture and Video Files		7
Settings		8

# Getting Started

# 1

## Introduction

xCapture Pro is Xplore Technologies full function picture, video, and code capture application that integrates full editing, annotation, and sharing capabilities.

## Features and Benefits

xCapture Pro provides users with the following features:

- **Photo Editing:** Crop, flip, rotate or annotate images.
- **Geotagging:** Geographical tagging utilizes the tablet's GPS location data to embed coordinates with a time/date stamp on the photo. The location where the photo was taken appears on a map which can be instantly shared by e-mail or upload.
- **Barcode Scanning:** Enables usage of the tablet PC's camera as a barcode scanner for light scanning needs.

# Using xCapture Pro

# 2

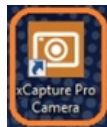
## Starting xCapture Pro

There are two ways to launch the xCapture Pro from the tablet PC:

- Desktop shortcut
- Start menu

### Launch Using the Desktop Shortcut

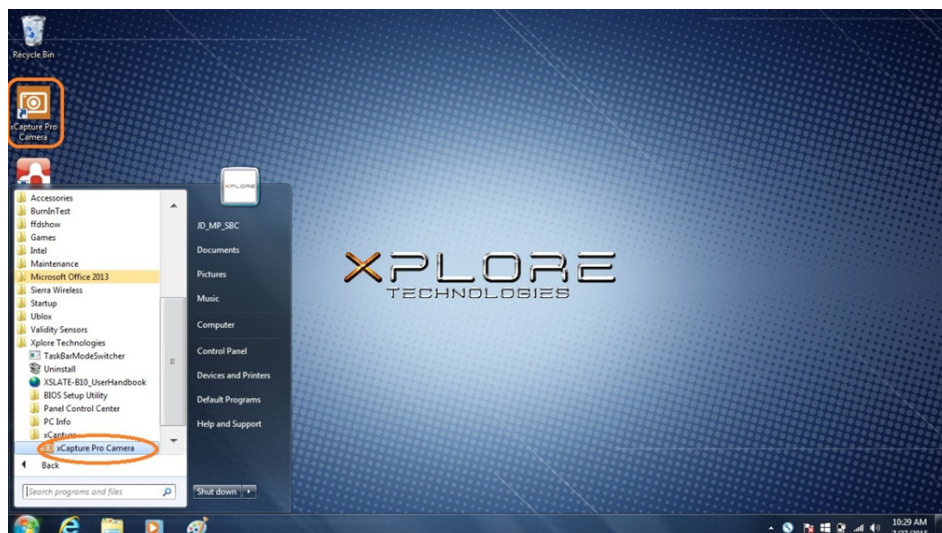
To launch xCapture Pro using the desktop shortcut, double-tap on the xCapture Pro icon.



### Launch Using the Start Menu

To launch xCapture Pro from the Start menu, perform the following steps:

1. Tap **Start** > **Xplore Technologies** > **xCapture** > **xCapture Pro Camera**.

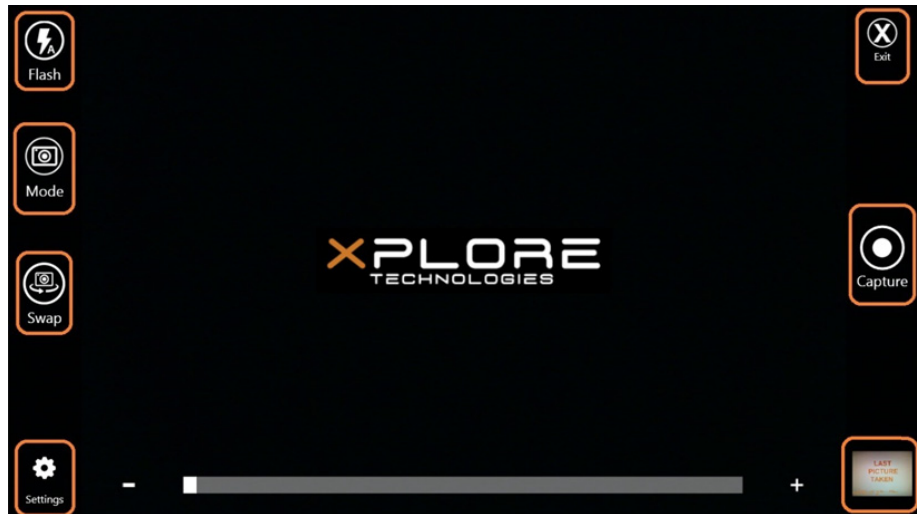


# xCapture Pro Modes

The xCapture Pro software includes the following capture mode functions:

- **Picture Capture Mode**
- **Video Capture Mode**
- **Code Capture Mode**
- **QR Capture Mode**

## Picture Capture Mode



The **Picture Capture** mode within xCapture Pro allows the user to perform the following functions:

- **Flash** - Tap the **Flash** icon to toggle through the available flash modes for the camera. The available flash settings are:
  - **On**
  - **Off**
  - **Automatic**
- **Mode** - Tap the **Mode** icon to toggle through the available capture options:
  - **Picture Capture** (**Picture Capture** mode is show above)
  - **Video Capture**
  - **Code Capture**
  - **QR Capture Mode**
- **Swap** - Tap the **Swap** icon to select the camera to be used. Users can select from the following camera options:
  - **Front**
  - **Rear**
  - **External USB** (if connected)
- **Settings** - Tap the **Settings** icon to open the xCapture Pro Settings page. For information about the various settings that can be adjusted, see [Settings](#) on page 8.

- **Exit** - Tap the **Exit** icon to close the xCapture Pro program.
- **Capture** - Tap the **Capture** icon to take a picture
- **Last Picture Taken** - Located in the lower right corner, the tapping the last picture taken displays the picture in a full-screen setting
- **Preview Zoom Level** - Displayed at the bottom of the screen, the preview zoom level can be adjusted using the slider. Additionally, users can pinch-touch the image to zoom in or out.

## Video Capture Mode



The **Video Capture** mode within xCapture Pro allows the user to adjust the lighting and mode, show the video recording progress, and starting or stopping the recording process.

- **Torch** - Tap the **Torch** icon to toggle through the available Torch modes (depending on availability):
  - **On**
  - **Off**
- **Mode** - Tap the **Mode** icon to toggle through the available capture options:
  - **Picture Capture**
  - **Video Capture** (Video Capture mode is show above)
  - **Code Capture**
  - **QR Capture Mode**
- A timer/counter displays the timing of the video recording in progress near the upper-right corner of the display
- **Capture** - Tap the **Capture** icon to start (ON) or stop (OFF) the video recording process  
**Note:** When the Video Capture function is ON, the icon will continually flash.

## Code Capture Mode

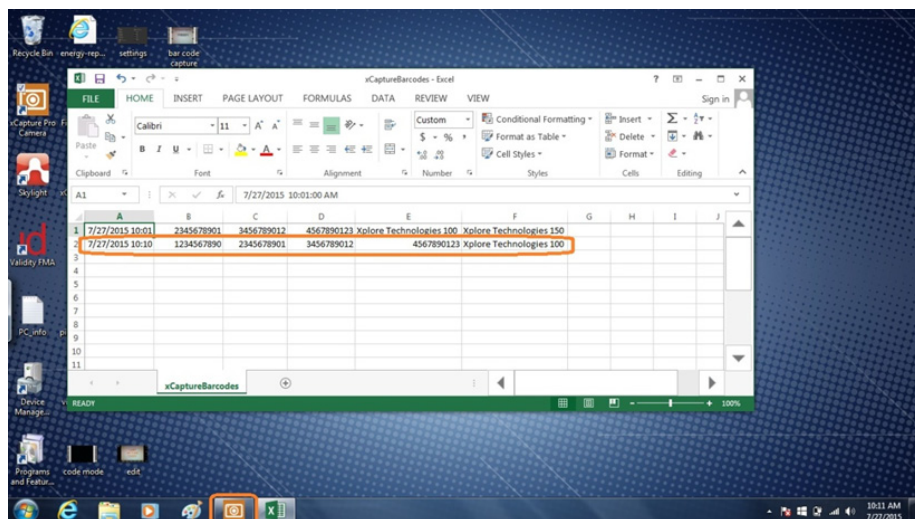
The **Code Capture** mode included with the xCapture Pro allows users to capture and store code information within a .CSV file.



- **Mode** - Tap the **Mode** icon to toggle through the available capture options:
  - **Picture Capture**
  - **Video Capture**
  - **Code Capture (Code Capture mode is show above)**
  - **QR Capture Mode**
- **Capture** - Tap the **Capture** icon to start (ON) or stop (OFF) the code capturing process

When the **Code Capture** function is ON, the icon will continually flash.

After stopping the Code Capture, the xCapture Pro window minimizes and a .CSV containing the captured code(s) opens. The content displays in a single row with one code listed within each cell.

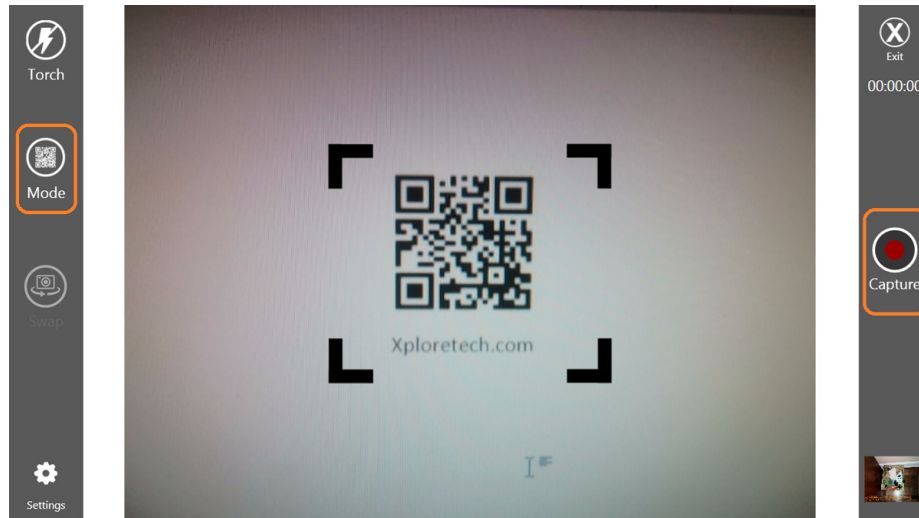




The first cell/column contains a date/time stamp for the code capture session for tracking purposed. The .CSV file can then be closed and xCapture Pro brought to full screen to continue with additional code scanning if desired.

**NOTE:** Additional code captures will be saved to the next line within the .CSV file.

## QR Code Mode



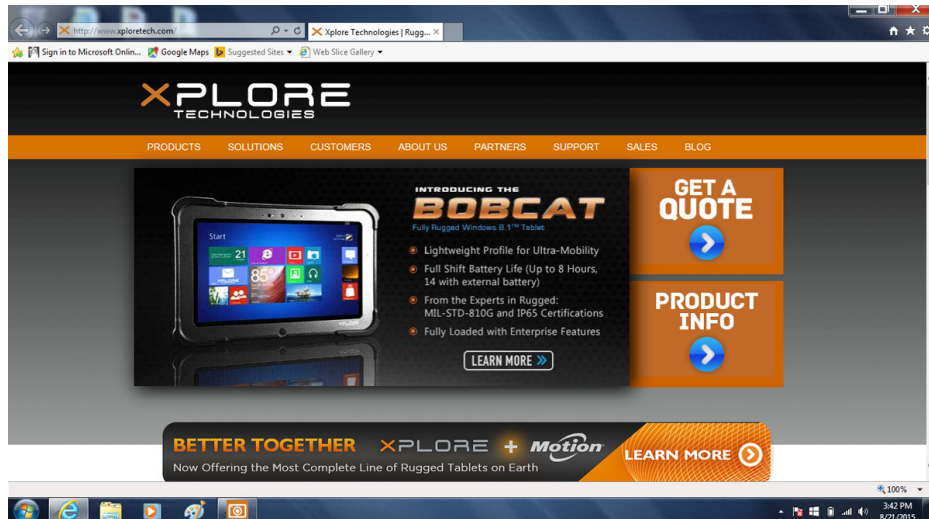
The QR Code mode included with xCapture Pro allows users to scan QR codes and automatically open the web browser to the scanned URL.

- **Mode** - Tap the **Mode** icon to toggle through the available capture options:
  - **Picture Capture**
  - **Video Capture**
  - **Code Capture**
  - **QR Code Capture** (QR Capture mode is shown above)
- **Capture** – Tap the **Capture** icon to start (ON) or stop (OFF) the QR Code capturing process.

When the QR Code Capture function is ON, the icon will continually flash.

After capturing a QR Code URL, the xCapture Pro window minimizes and a browser window opens to the designated website:

**NOTE:** To use the QR Code function, there must be an active Internet browser connection.



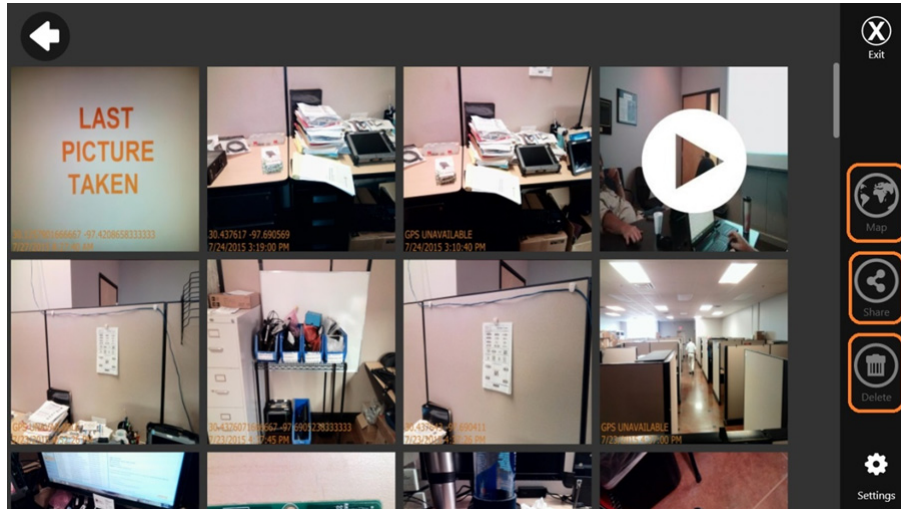
## View, Edit, and Share Picture and Video Files



Tapping the **Last Picture Taken** icon displays the last picture captured in full-screen mode. This setting offers the following functions:

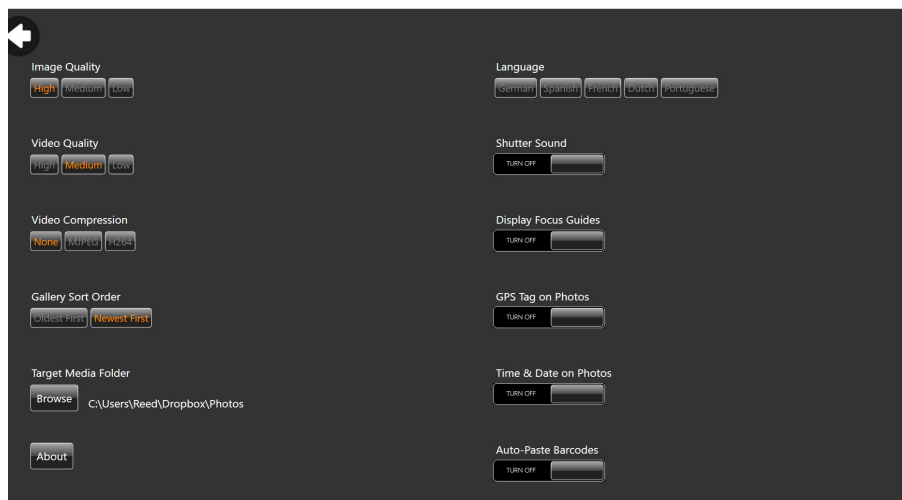
- **Annotate** - Tap the **Annotate** icon to access the **Pen, Pencil, Highlight, Text, Arrow,** and **Crop** functions.
- **Edit** - Tap the **Edit** icon access the **Rotate, Crop, Flip** options or to adjust the **Bright** or **Contrast** settings
- **Share** - Tap the **Share** icon to select from the available **E-mail, Copy,** or **Print** options
- **Delete** - Tap the **Delete** icon to delete the picture or video file
- **Gallery** - Tap the **Gallery** icon to open the Image Gallery that contains all of the saved picture and video files.

When in the **Gallery** view, single or multiple files can be selected to **Map, Share,** or **Delete.**



**NOTE:** To use the **Map** function on an image, the **GPS Tag on Photo** setting must be ON and an Internet browser connection must be active.

## Settings



The **Settings** function within xCapture Pro allows users to adjust the following settings:

- **Image Quality** - Tap **High**, **Medium**, or **Low** within the **Image Quality** listing to achieve the desired resolution. The **High** setting does offer the best image resolution however it does create a larger file size.

**Note:** The default **Image Quality** setting is set to **High**.

- **Video Quality** - Tap **High**, **Medium**, or **Low** within the **Video Quality** listing to achieve the desired resolution. The **High** setting does offer the best image resolution however it does create a larger file size and offers fewer frames per second (FPS).

**Note:** The default **Video Quality** setting is set to **Medium**.

- **Video Compression** - Tap **None**, **MJPEG**, or **H264** within the **Video Compression** listing to achieve the desired setting. Using the Video Compression feature will reduce the file size, however it will also reduce the quality of the video.

**Note:** The default **Video Compression** setting is set to **None**.

- **Gallery Sort Order** - Tap **Oldest First** or **Newest First** to select which files you prefer to view listed first within the Gallery

**Note:** The default **Gallery Sort Order** setting is set to **Newest First**.

- **Target Media Folder** - Tap **Browse** to select the storage location for the video and picture files

**Note:** The default folder location is set to the current user's Picture folder.

- **About** - Tap **About** to view the xCapture Pro version information

- **Language** - To the language, tap **English**, **French**, **German**, **Spanish**, or **Dutch**

- **Shutter Sound** - When using xCapture Pro, a clicking sound is made when taking a picture. Depending on user preference, the **Shutter Sound** can be left ON or can be turned OFF by swiping the switch bar to the desired setting.

**Note:** The default **Shutter Sound** is set to ON.

- **Display Focus Guides** - The xCapture Pro software provides users with focus guides that can aid in the picture taking process. Depending on user preference, the **Display Focus Guides** can be left ON or can be turned OFF by swiping the switch bar to the desired setting.

**Note:** The default **Display Focus Guides** setting is set to ON.

- **GPS Tag on Photos** - A feature within xCapture Pro allows for photos to be tagged on a map using the GPS function. For the GPS Map function to work, the GPS Tag on Photos setting must be ON. Depending on user preference, the **GPS Tag on Photos** function can be left ON or can be turned OFF by swiping the switch bar to the desired setting.

**Note:** The default **GPS Tag on Photos** setting is set to ON.

- **Auto-Paste Barcodes** - If the **Auto-Paste Barcodes** option is enabled, the program will automatically paste the scanned code into the currently active application's text field.

**Note:** The default **Auto-Paste Barcodes** setting is set to OFF.