



Predator PO3-600 **User's Guide**

© 2018. All Rights Reserved.

Desktop Computer Covers:

Tower models

This revision: April 2018 V1.00



Important

This manual contains proprietary information that is protected by copyright laws. The information contained in this manual is subject to change without notice. Images provided herein are for reference only and may contain information or features that do not apply to your computer. Acer Group shall not be liable for technical or editorial errors or omissions contained in this manual.

Table of Contents

1. UPGRADING YOUR COMPUTER	5	Graphic board	17
Installation precautions	5	Removing the Graphic board	17
ESD precautions	5	Installing the Graphic board	20
Required tools.....	5	M.2 SSD module	22
Pre-installation instructions	6	Removing the M.2 SSD module.....	22
Post-installation instructions	6	Installing the M.2 SSD module	25
System Upgrade	7	2. PREDATORSENSE	29
Removing the left side system cover....	7	PredatorSense features	29
Installing the left side system cover.....	8		
Hard drives	9		
Removing the 3.5-inch hard drives	9		
Installing the 3.5-inch hard drives	12		
Memory	14		
Memory configuration guidelines	14		
Removing a memory module.....	15		
Installing a memory module.....	16		

Upgrading your Computer

In this section, you will find:

- Instructions on how to replace a hardware component

1. UPGRADING YOUR COMPUTER

Installation precautions

Before you install any computer component, we recommend that you read the following sections. These sections contain important ESD precautions along with pre-installation and post-installation instructions.

ESD precautions

Electrostatic discharge (ESD) can damage your processor, disk drives, expansion boards, and other components. Always observe the following precautions before you install a computer component:

1. Do not remove a component from its protective packaging until you are ready to install it.
2. Wear a wrist grounding strap and attach it to a metal part of the computer before handling components. If a wrist strap is not available, maintain contact with the computer throughout any procedure requiring ESD protection.

Required tools

In performing the component replacement process, you will need the following tools:

- Philips screwdriver
- Hex screwdriver
- Flat screwdriver
- Scissors



Note

The screws for the different components vary in size. During the disassembly process, group the screws with their corresponding components to avoid mismatches when putting back the components.

Pre-installation instructions

Always observe the following before you install any component:

1. Make sure that the ODD and card reader slot is empty.
2. Turn off the power to the computer and all peripherals.
3. Unplug the power cord from the computer.
4. Unplug the network cable and all connected peripheral devices from the computer.
5. Place the computer on a flat, steady surface.
6. Open your computer according to the instructions on Removing the rear system cover on page 7 and Removing the left side system cover on page 9.
7. See the following sections for specific instructions on the component you wish to install.



Warning

Not turning off the computer properly before you start installing the components may cause serious damage. Do not attempt the procedures described in the following sections unless you are a qualified service technician.

Post-installation instructions

Observe the following after installing a computer component:

1. See to it that the components are installed according to the step-by-step instructions in their respective sections.
2. Replace any expansion boards or peripherals that you removed earlier.
3. Replace the system covers. See Installing the left side system cover on page 10 and Installing the rear system cover on page 8.
4. Connect the necessary cables.
5. Turn on your computer.

System Upgrade

Removing the left side system cover

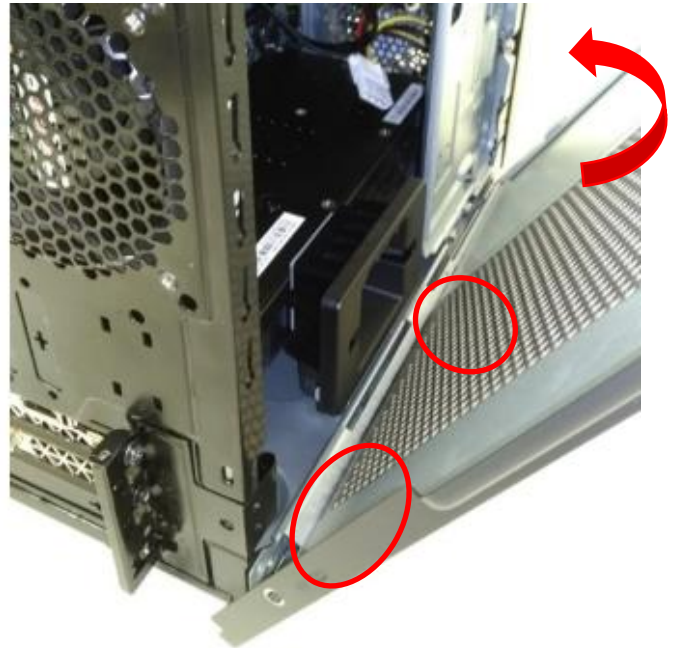
1. Before you proceed, make sure that you have turned off your computer and all peripherals connected to it. Read the Pre- installation instructions on page 6.
2. Remove the two screws that secure the system cover to the computer.
3. Slide the cover toward the back of the computer and pull away from the side of the computer.



4. Set the cover aside for re-installation later.

Installing the left side system cover

1. Align the cover to the sides of the computer and slide the cover toward the front of the computer.
2. Secure the cover with two screws.



3. Observe the Post-installation instructions on page 6.

Hard drives

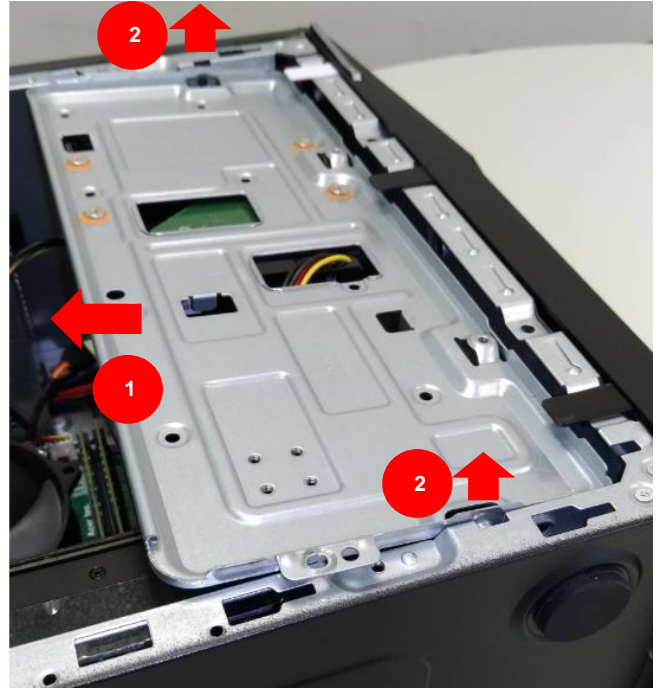
The computer supports installation of one 3.5-inch SATA hard drives in the internal HDD cage.

Removing the 3.5-inch hard drives

1. Perform Pre-installation instructions on page 6.
2. Remove the four screws that secure the HDD bracket to the computer.



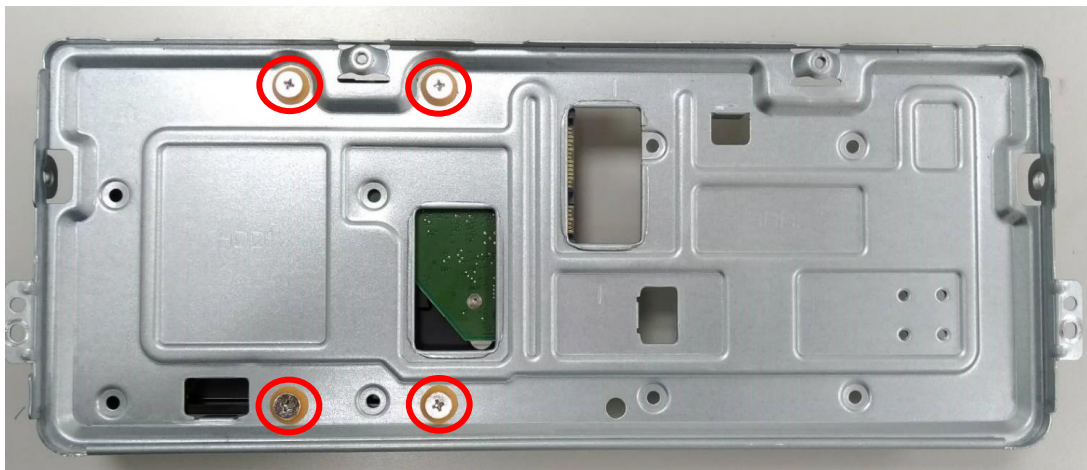
3. Rotating the HDD bracket and pull away from the side of computer (1) (2).



4. Disconnect the power and data cables from the hard drives.

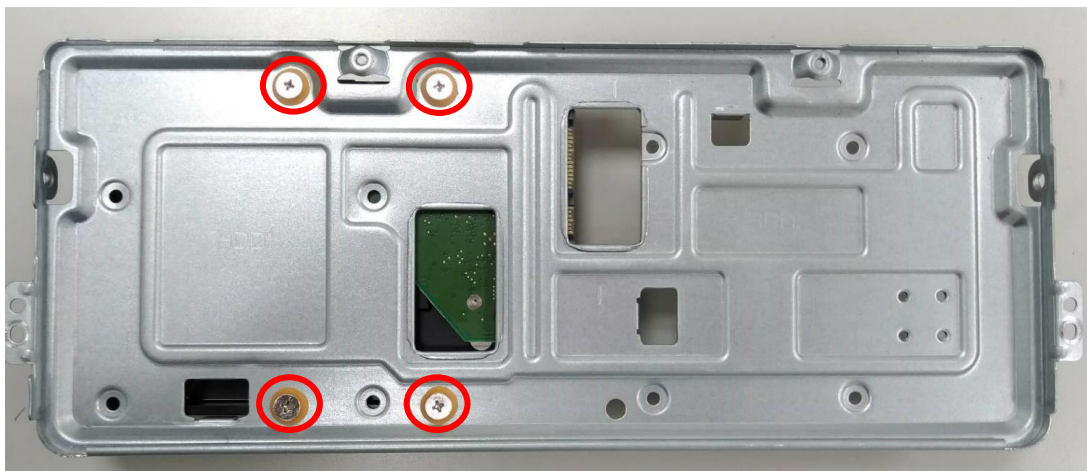


5. Remove the four screws that secure the hard drives to the bracket.

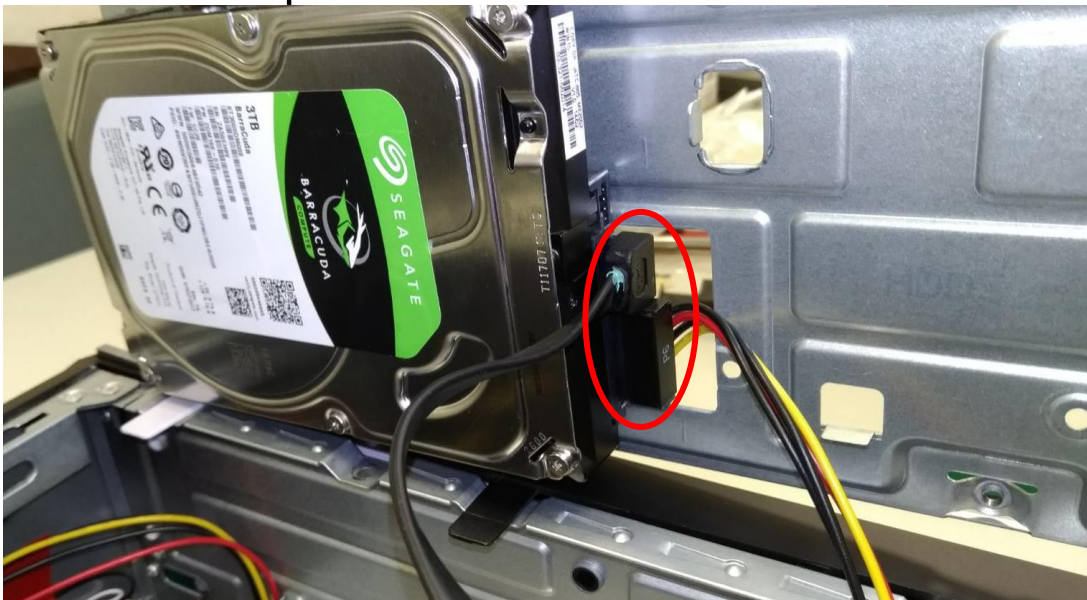


Installing the 3.5-inch hard drives

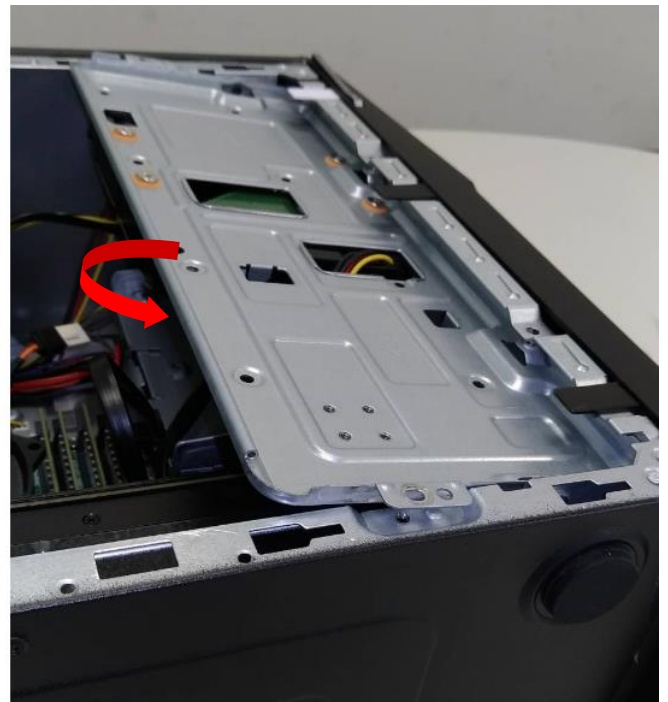
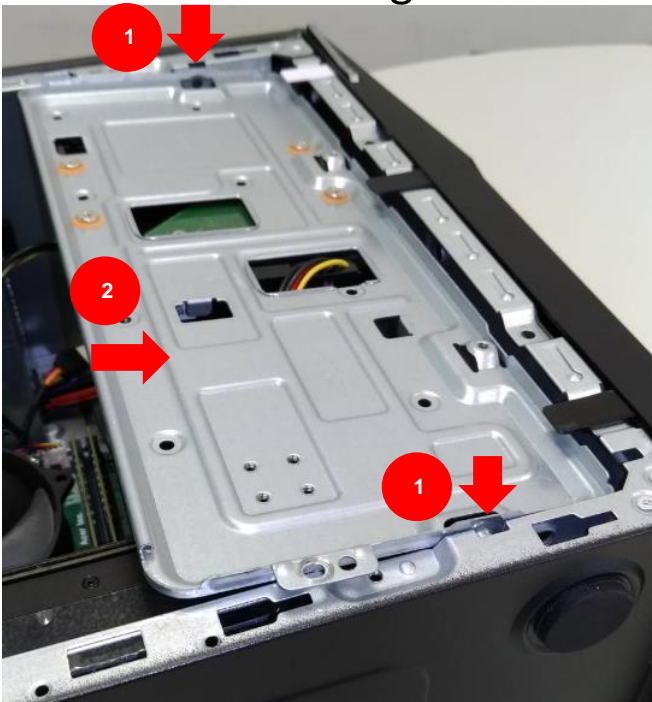
1. Remove the new hard drive from their packaging.
2. Insert the new hard drive into the bracket and secure the new hard drive with four screws.



3. Connect the power and data cables to the hard drive.



4. Insert the HDD bracket into the side of computer (1) (2) and rotating the bracket to fix.



5. Secure the HDD bracket with four screws.



6. Observe the Post-installation instructions on page 6.

Memory

The computer has four DDR4 U-DIMM slots that support up to 64 GB maximum system memory.

Memory configuration guidelines



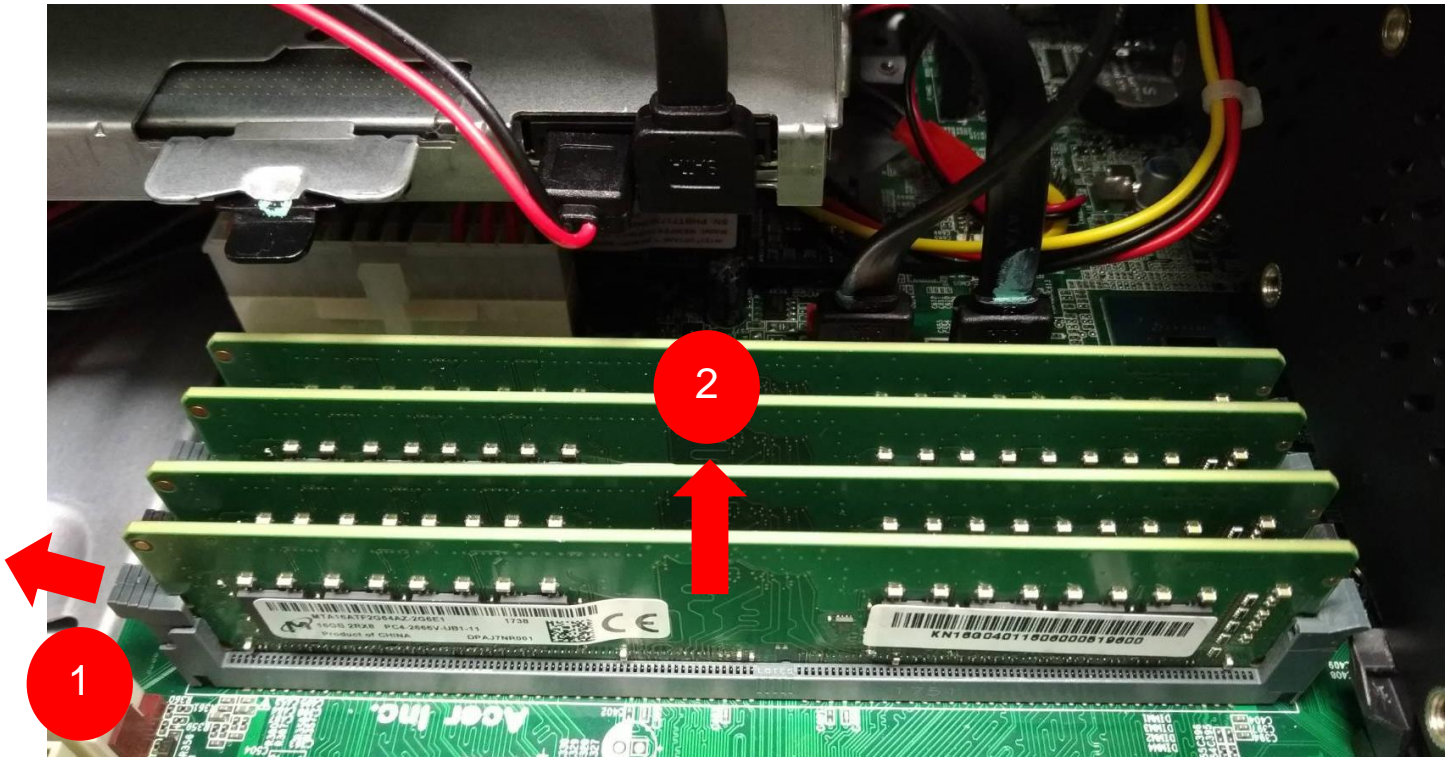
DIMM4
DIMM2
DIMM3
DIMM1

- To ensure data integrity, use only Acer-approved DDR4 2400 MHz or DDR4 2666 MHz type memory modules.
- Memory modules must be installed starting with DIMM3 slot.
- Always handle memory modules by its edges.
- When installing memory modules, populate the DIMM slots according to the table below.

Size	DIMM1	DIMM2	DIMM3	DIMM4
4GB	4GB	N/A	N/A	N/A
8GB	4GB	4GB	N/A	N/A
12GB	4GB	4GB	4GB	N/A
16GB	4GB	4GB	4GB	4GB
8GB	8GB	N/A	N/A	N/A
16GB	8GB	8GB	N/A	N/A
24GB	8GB	8GB	8GB	N/A
32GB	8GB	8GB	8GB	8GB
16GB	16GB	N/A	N/A	N/A
32GB	16GB	16GB	N/A	N/A
48GB	16GB	16GB	16GB	N/A
64GB	16GB	16GB	16GB	16GB

Removing a memory module

1. Perform Pre-installation instructions on page 6.
2. Press outward the holding clips on both sides of the DIMM slot outward to release the memory module (1).
3. Gently pull the memory module upward to remove it from the DIMM slot (2).



4. Repeat steps 5~6 to remove the other memory modules.

Installing a memory module

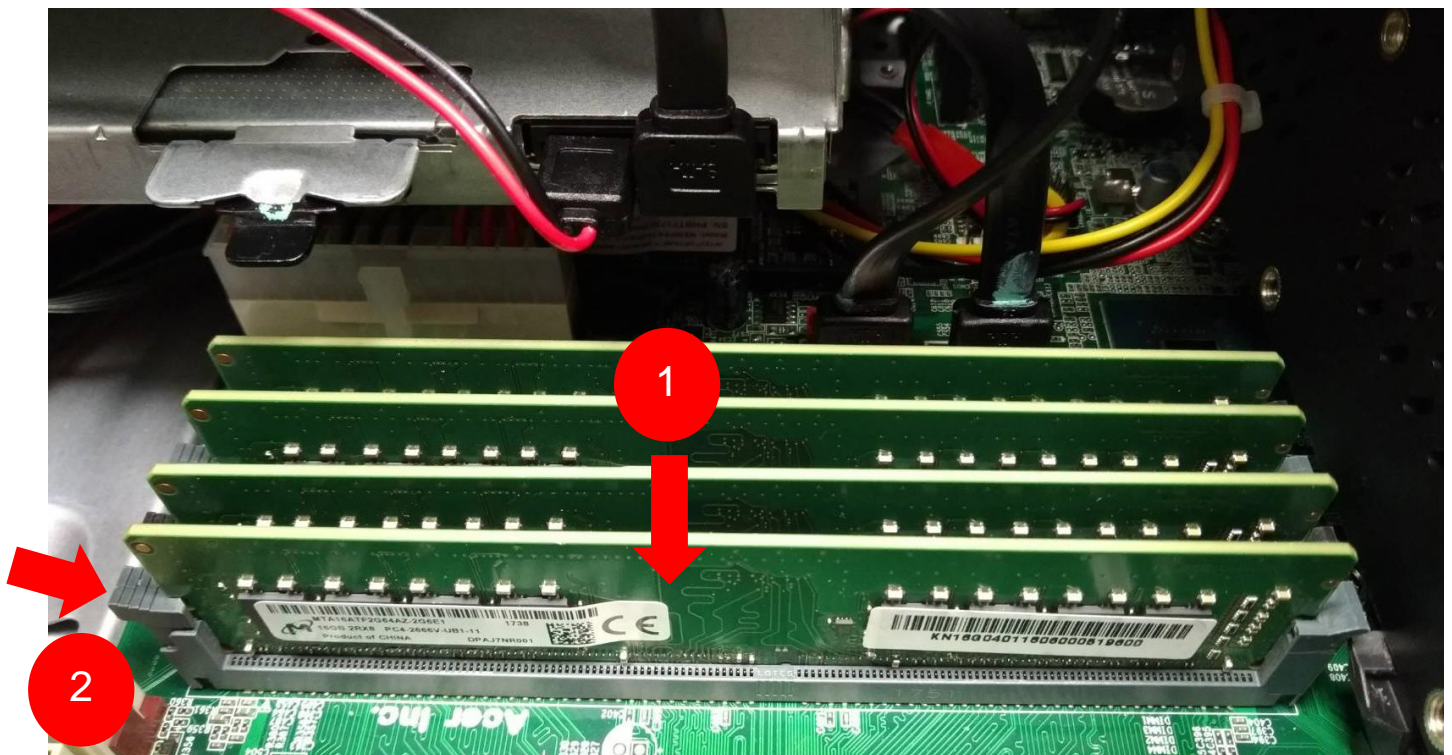


Note

DIMM slots on the mainboard must be installed only in certain configurations. Numbers next to DIMM slots correspond to installation sequence. Be sure to install the memory module in DIMM1 slot followed by DIMM2 slot.

1. Select an empty DIMM slot.
2. Remove the new memory module from its packaging, handling it by the edges.
3. Align then insert the memory module into the DIMM slot (1).
4. Insert the memory to the slot until the retaining clips snap inward (2).

The module is keyed so it can only be inserted in one direction. If the module does not fit, make sure that the notch in the module lines up with the tab in the memory slot.



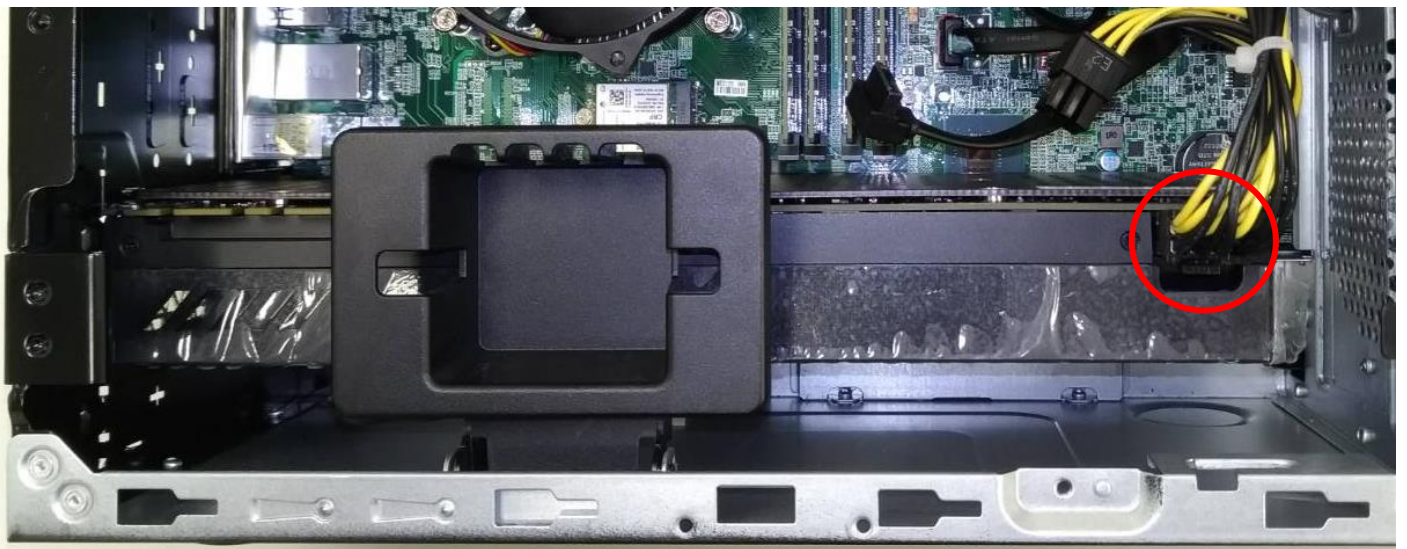
5. Repeat steps 1~4 to install the other memory modules.
6. Observe the Post-installation instructions on page 6.

Graphic board

The computer contains one or two Graphic boards installed in the PCIe x16 slots. The detail configuration will be differed by different models.

Removing the Graphic board

1. Perform Pre-installation instructions on page 6.
2. Remove the 3.5-inch hard drives. See removing the 3.5-inch hard drives.
3. Disconnect the power cables from the Graphic board.



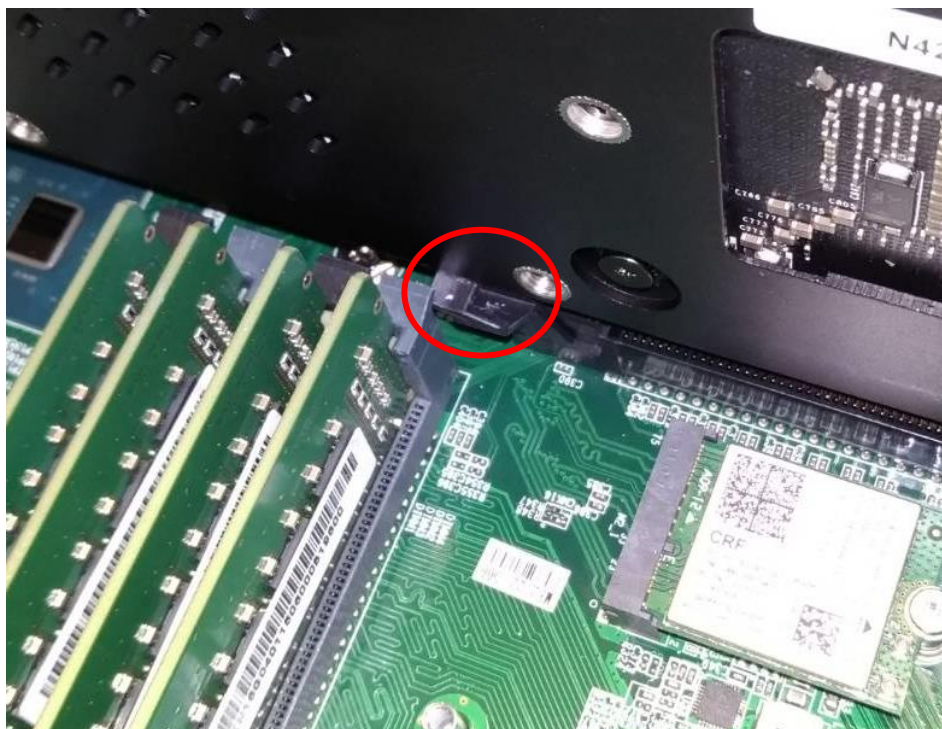
4. Remove the screw that secure the Graphic boards to the chassis.



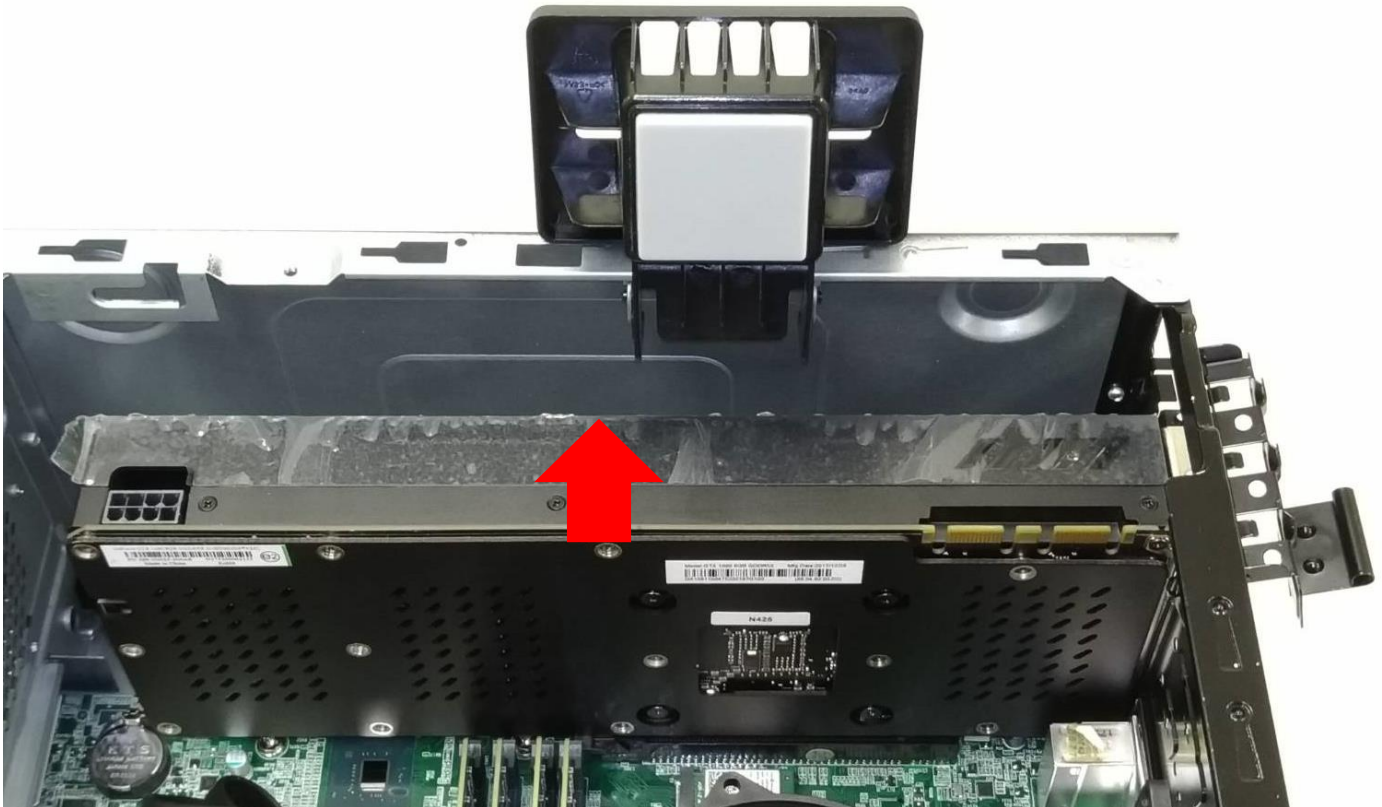
5. Rotating the latch bracket and graphic board hold module to release.



6. Release the latch that secures the graphic board to the mainboard.



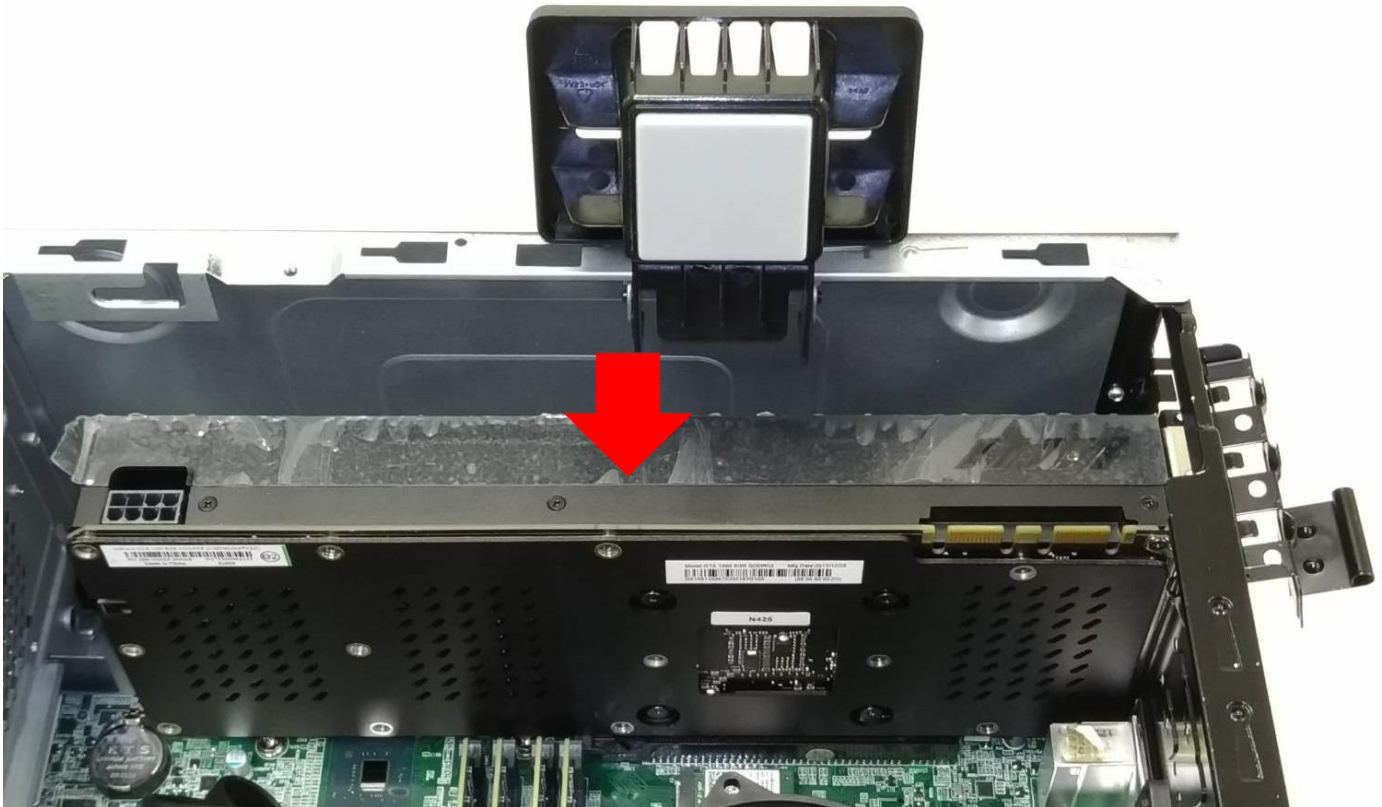
7. Detach the Graphic board from the PCIe x16 slot.



Installing the Graphic board

1. Remove the new graphic board from its packaging.
2. Insert the Graphic boards into the PCIe x16 slot and push it until it latches into place.

[Note] For replace/upgrade graphic board, please check the specification of graphic board & power supply first in order to make sure the graphic board and power supply could work.



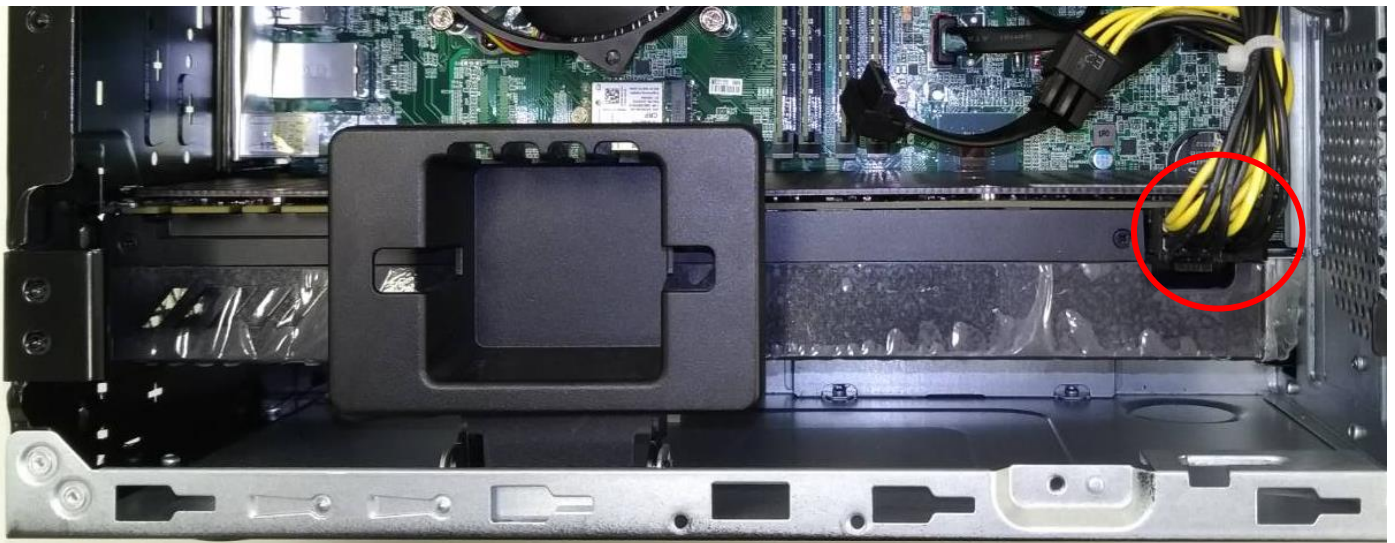
3. Rotating the latch bracket (1) and graphic board hold module (2) to lock.



4. Secure the Graphic board with screws.



5. Connect the power cables to the Graphic boards.



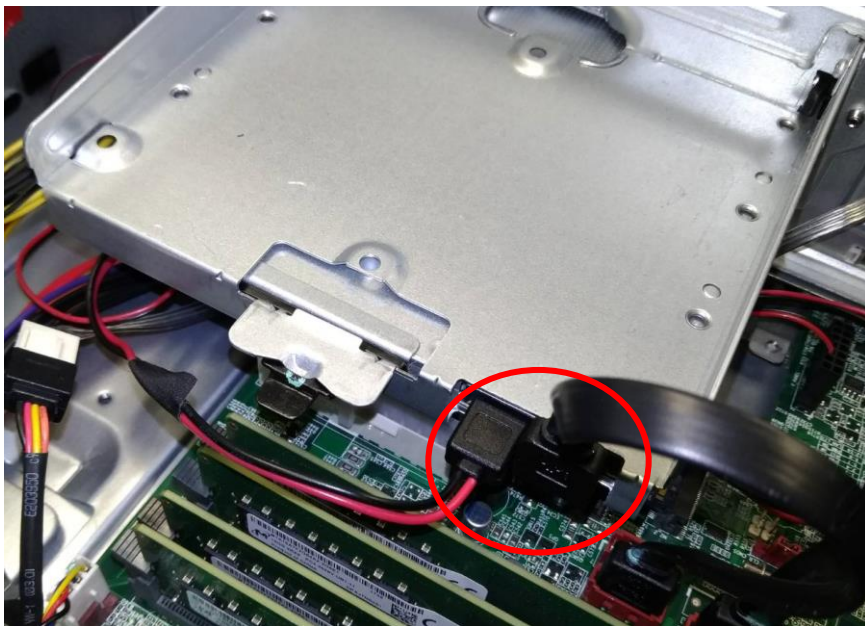
6. Replace the 3.5-inch hard drives. See installing the 3.5-inch hard drives.
7. Observe the Post-installation instructions on page 6.

M.2 SSD module

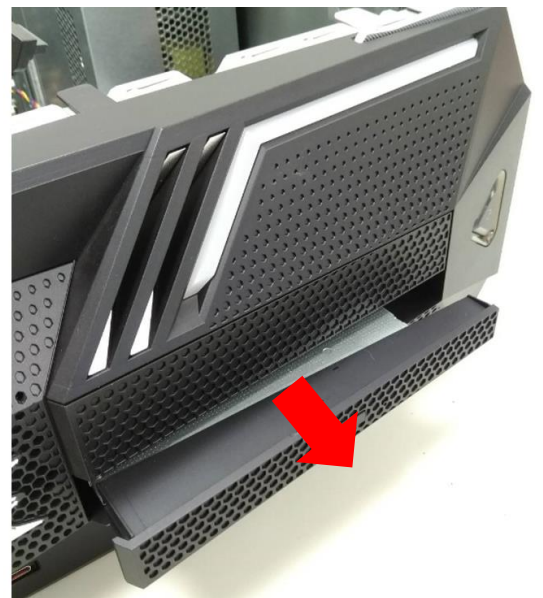
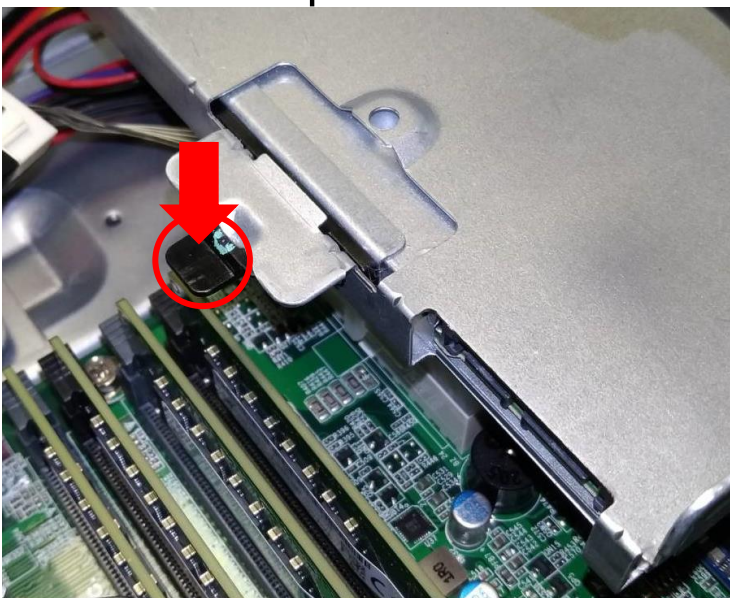
The computer contains one M.2 SSD module installed in the M.2 PCIe slot.

Removing the M.2 SSD module

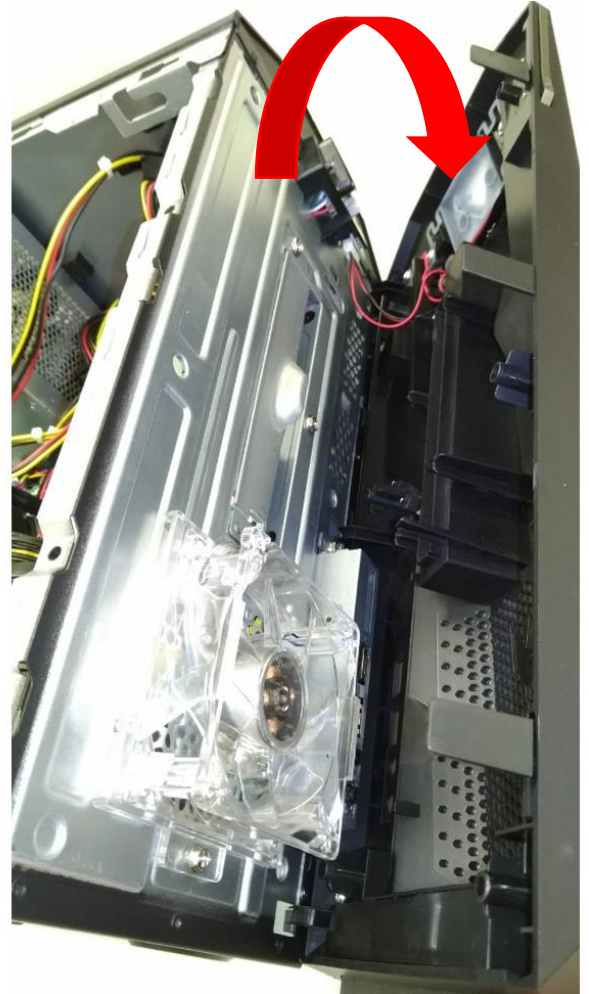
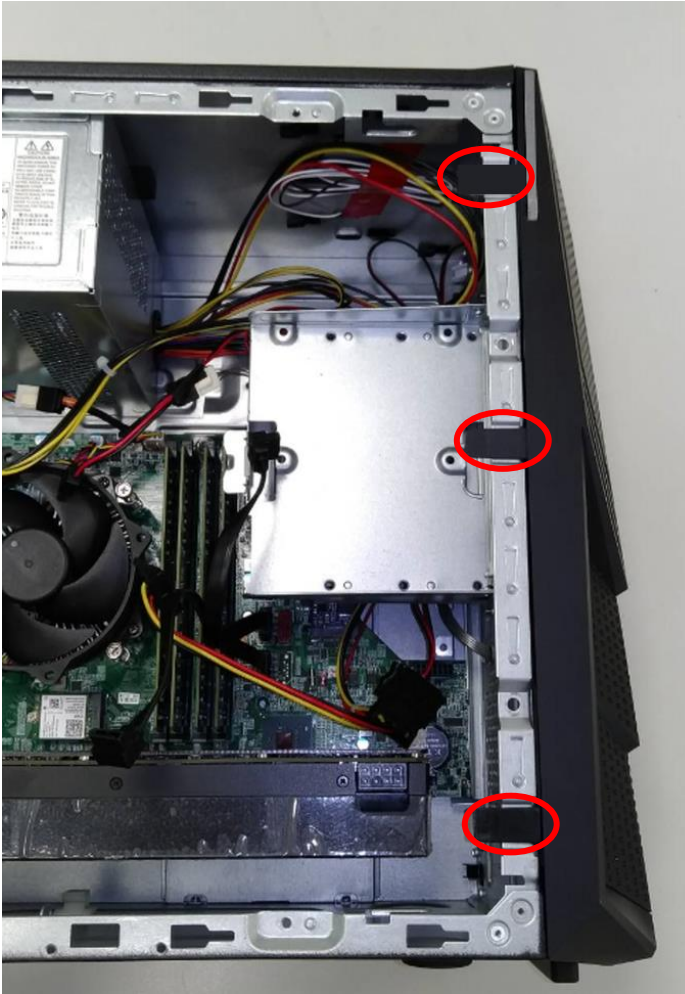
1. Perform Pre-installation instructions on page 6.
2. Remove the 3.5-inch hard drives. See removing the 3.5-inch hard drives.
3. Disconnect the power and data cables from the ODD drives.



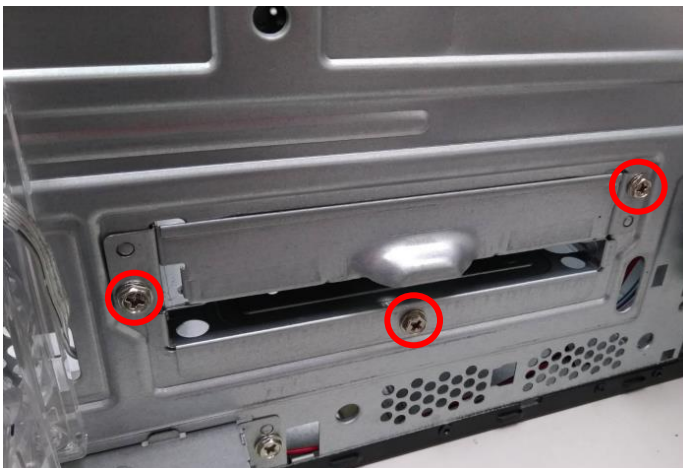
4. Press the ODD bracket to down and release it out from the computer.



5. Release front bezel hook and rotating it out from the computer.



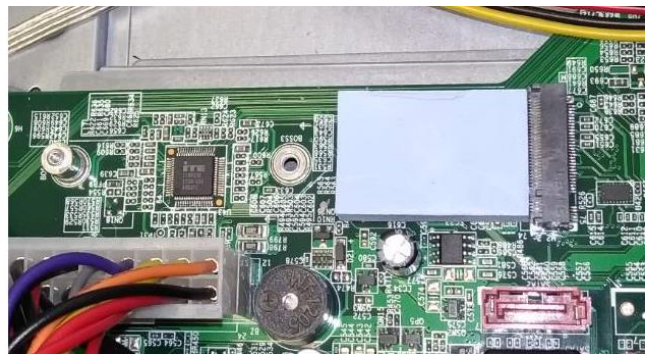
6. Remove the screws and release ODD support out from computer.



7. Remove the screws that secures the M.2 SSD module from the mainboard.



8. Detach the M.2 SSD module from the mainboard.



Installing the M.2 SSD module

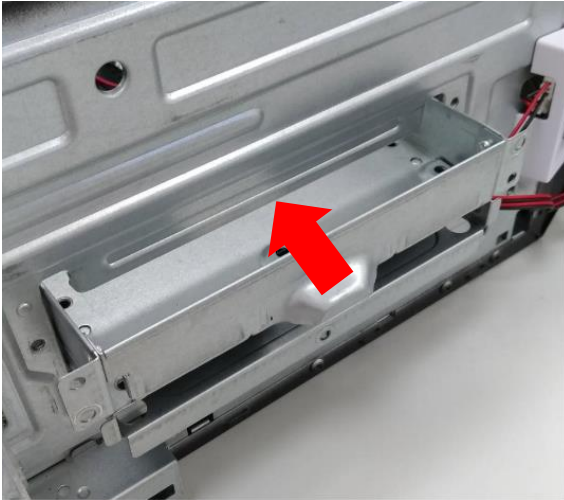
1. Remove the new M.2 SSD module from its packaging.
2. Insert the M.2 SSD module into its slot in the mainboard.



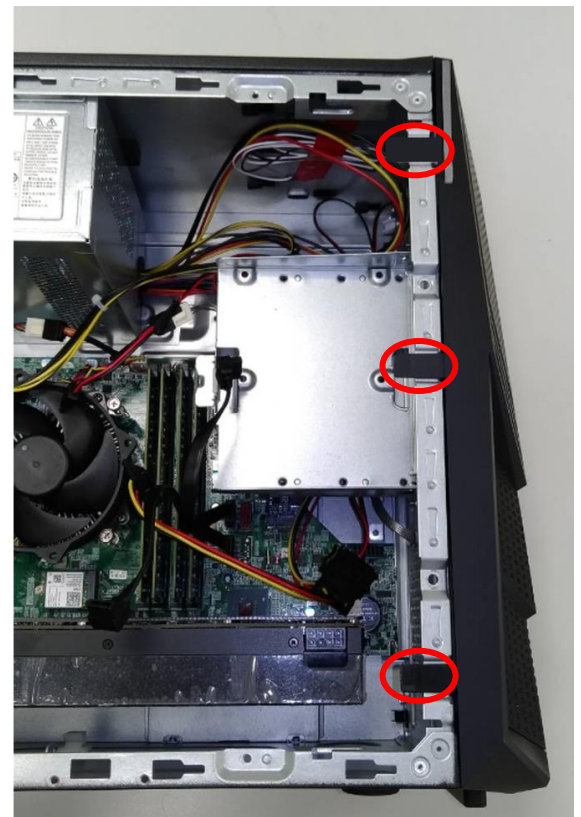
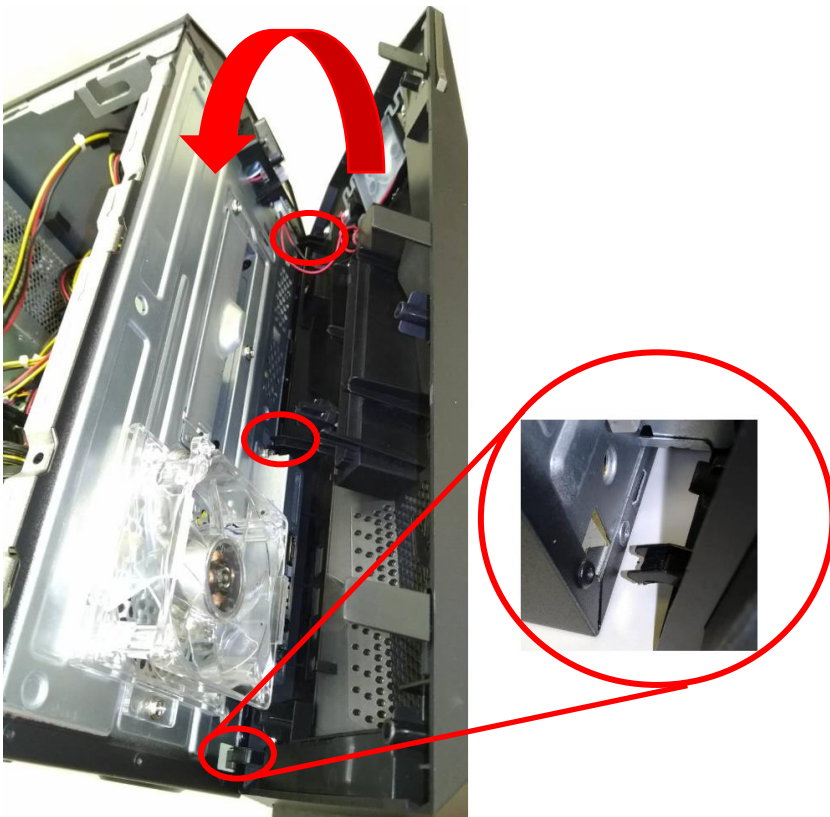
3. Secure the M.2 SSD module and mainboard with screws.



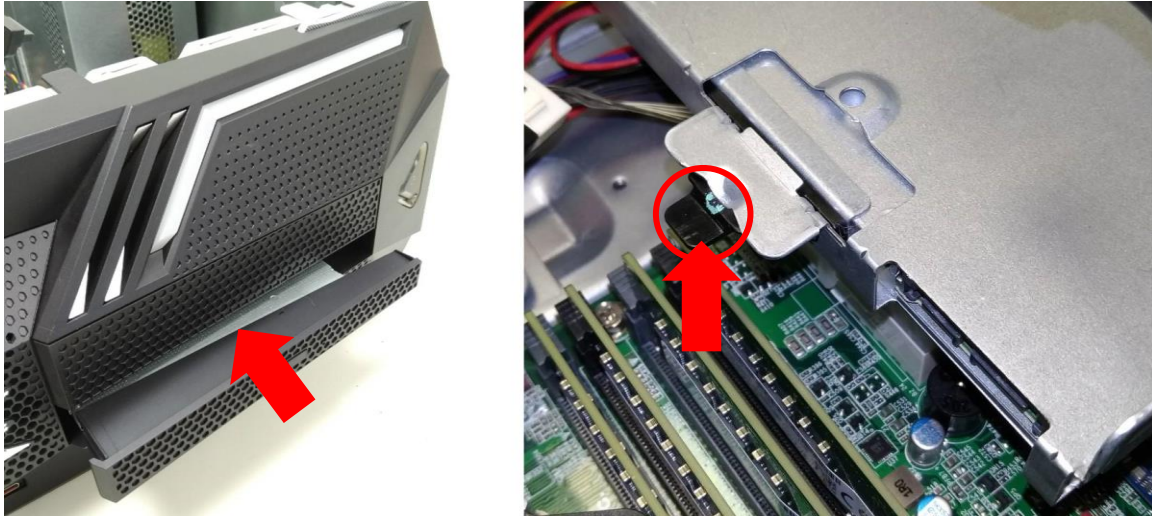
4. Insert the ODD support to the computer and secure the screws.



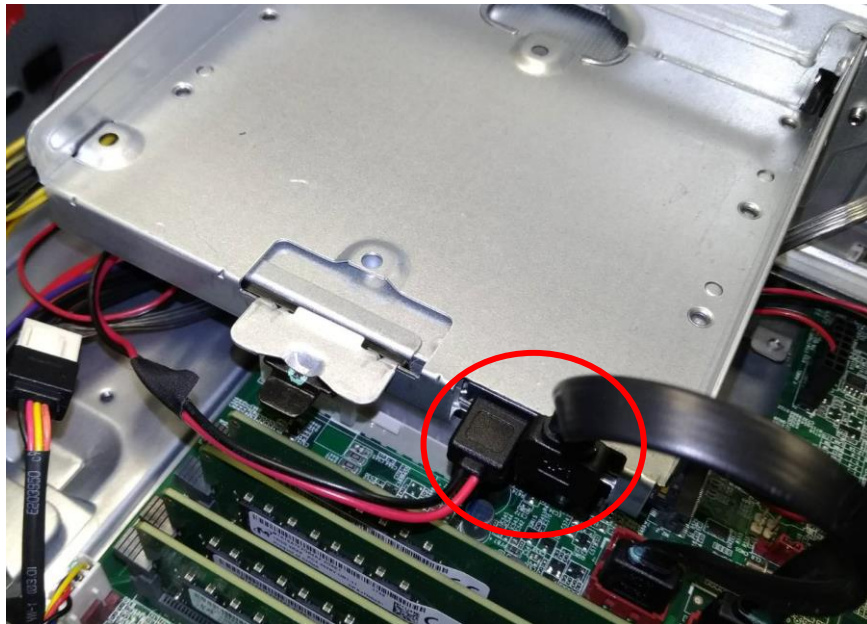
5. Align the front bezel hook to the sides of the computer and rotating it until it into place on the computer.



6. Insert the ODD module to the computer and push it until it latches into place



7. Connect the power and data cables from the ODD drives.



8. Replace the 3.5-inch hard drives. See installing the 3.5-inch hard drives.
9. Observe the Post-installation instructions on page 6.

PredatorSense

In this section, you will find:

- Introduction to the PredatorSense utility
- How to use PredatorSense

2 PREDATORSENSE

PredatorSense (DT) is an Acer proprietary utility to enhance the user experience of Gaming products on Microsoft Windows 10.

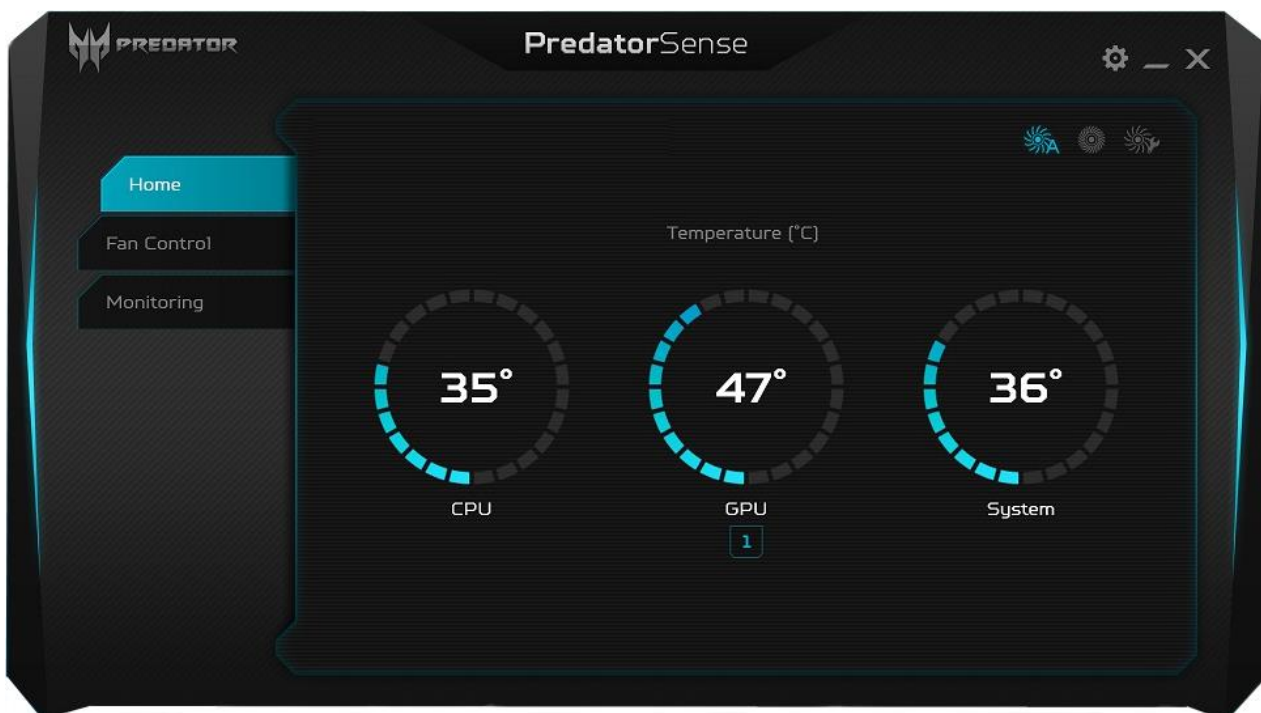
The central idea of this utility is to provide a user interface to easily control fan speed and also display system information.

PredatorSense features

- **System information dashboard**
- **Fan speed control**
- **Monitoring**
- **Advanced settings**
- **Live update**

To set up the PredatorSense application (Windows 10):

1. From the *Start menu*, select **All apps**.
2. Select **Acer**.
3. Select **PredatorSense**.



[Note] PredatorSense function is keeping increased to enlarge user experience, Any new features update excluded from user guide should be possible.

Category	Description
Home	<p>Provide overview of all features with quick adjustment</p> <ul style="list-style-type: none"> • CPU/GPU/System health information • Fan speed control (Auto, Gaming and Silence)
Front sys fan control	<p>Provide Fan speed control in Auto, Gaming and Custom mode for Front fan. And show the fan speed for Front fan. On the Custom fan speed, user can adjust the fan speed in percentage.</p> <ul style="list-style-type: none"> • Custom fan speed only can control by 60 ~ 100% percentage.
Monitoring	<p>Provide 3 tabs for CPU and GPU and System.</p> <ul style="list-style-type: none"> • Temperature in C/F • Loading in % • Frequency in MHz • Voltage in V • Fan speed in RPM • Download/Upload in bytes/s of WIFI/Ethernet • Usage in GB of RAM
Advanced settings	Provide control for Units of temperature
Live update	<p>While user launches UI first time after a restart/boot while network is available, UI will start to check Acer web service. If there is any new update for PredatorSense, PredatorSense will download (silently) and install (not silent install).</p>