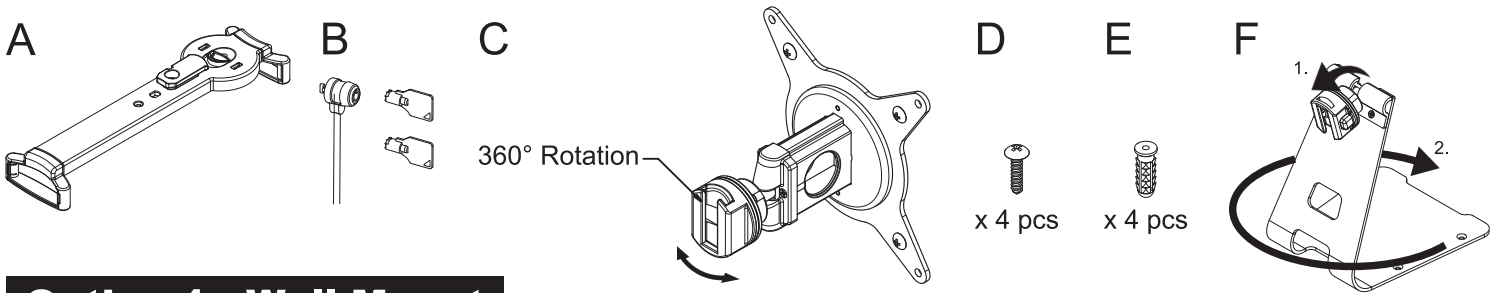


INSTALLATION INSTRUCTIONS

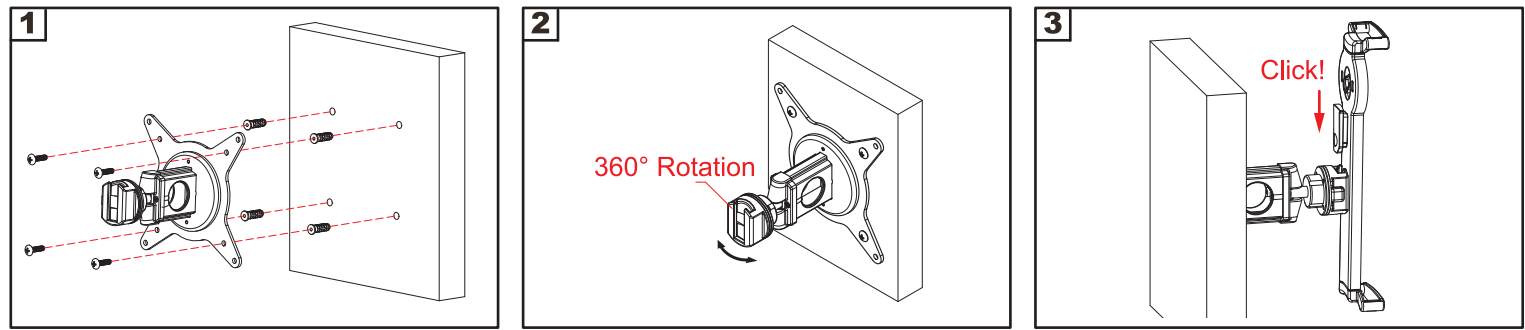
PAD-TSHK

Contents :

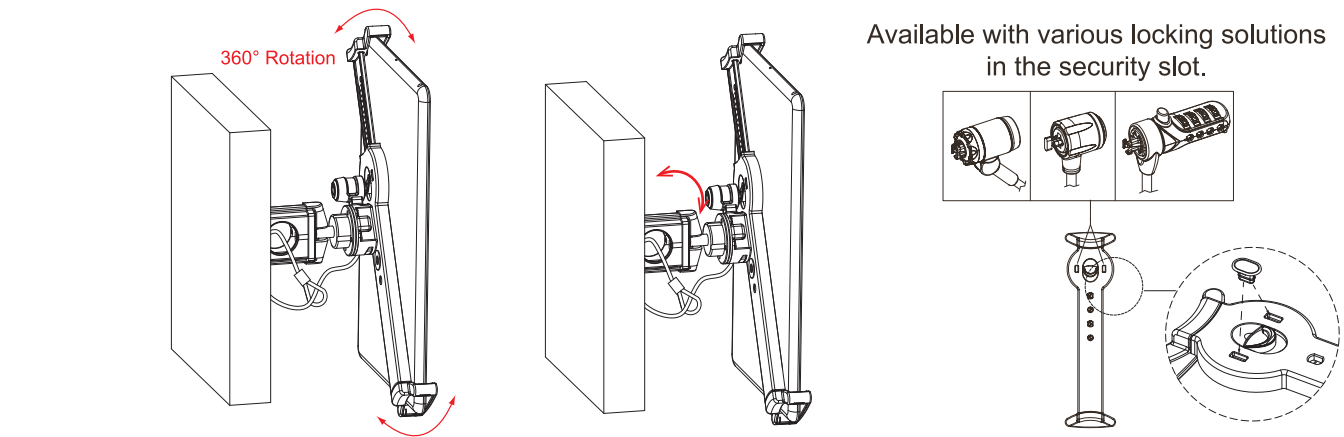
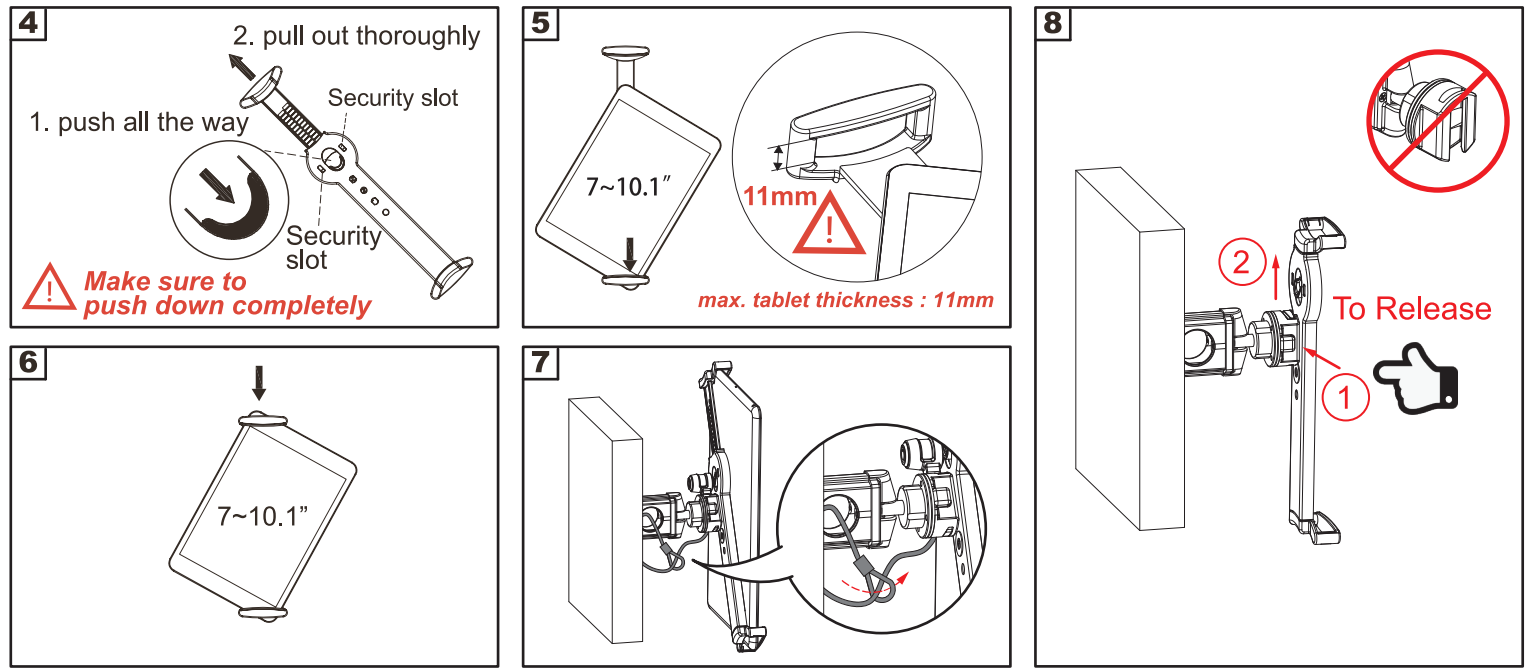


Option 1 : Wall Mount

How to install the base on the wall :

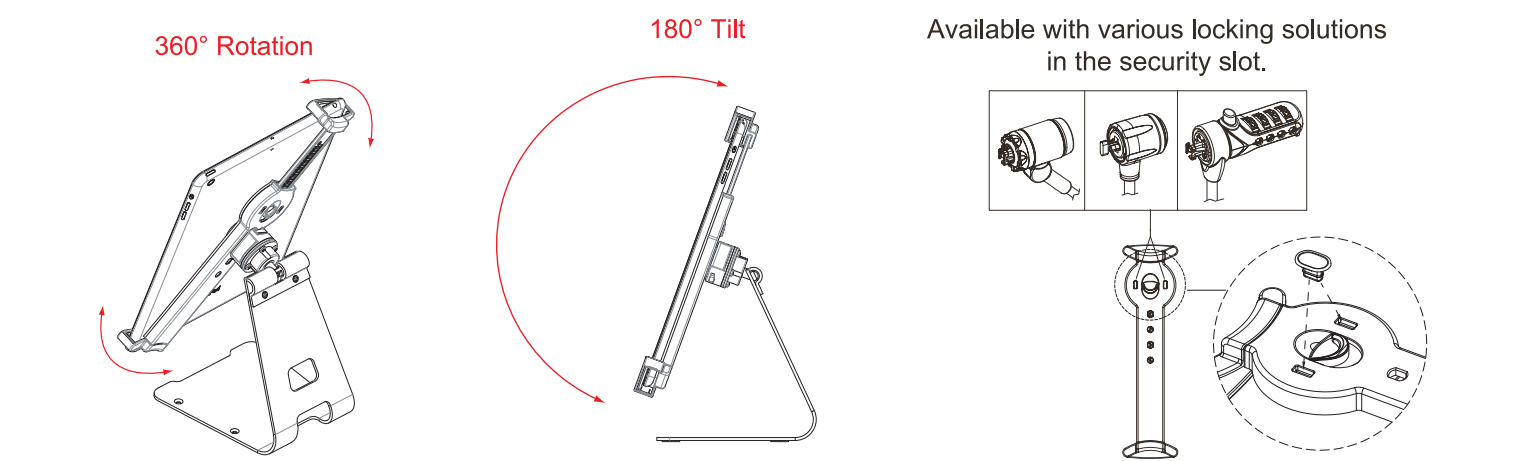
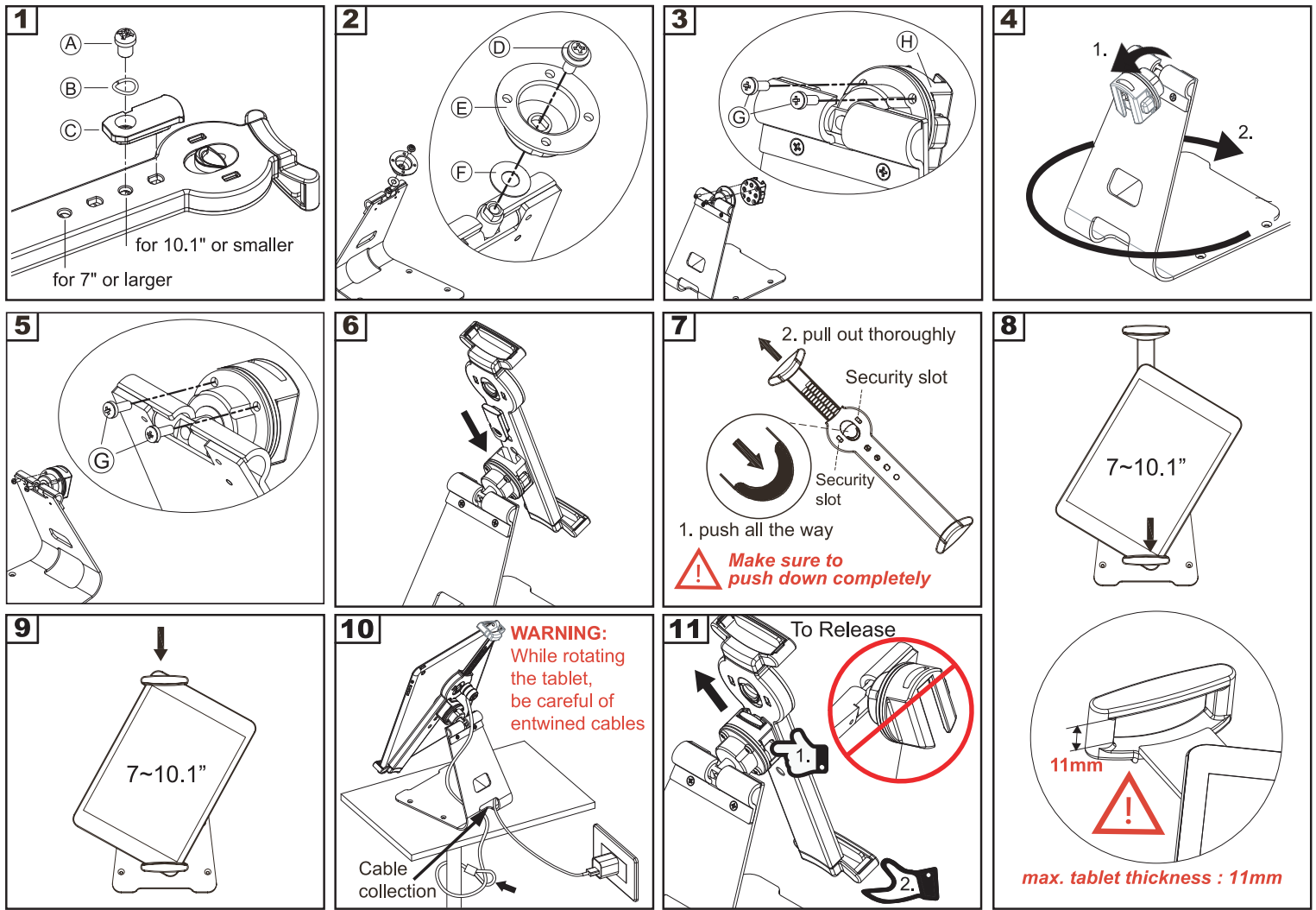


How to install the tablet on the holder :



Option 2 : Base Stand

How to install the base on the wall :



* For Adjustable Tablet Lock only, please refer to step 7, 8 and 9 of installation instructions.