

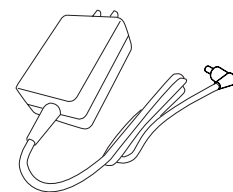
IP55 / IP60

IP70

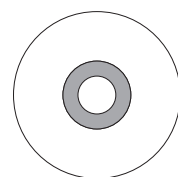
Network Camera Quick Start Guide



Network Camera



Power Adaptor (5V, 2A)



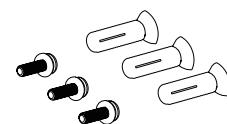
Installation CD



RJ-45 LAN Cable



Quick Start Guide

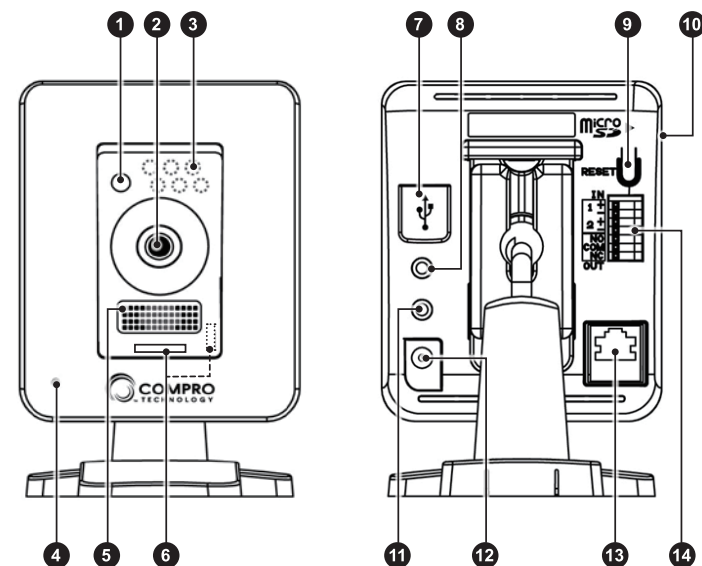


Screw for Ceiling Mount x 3
Screw Anchor x 3

Package Contents

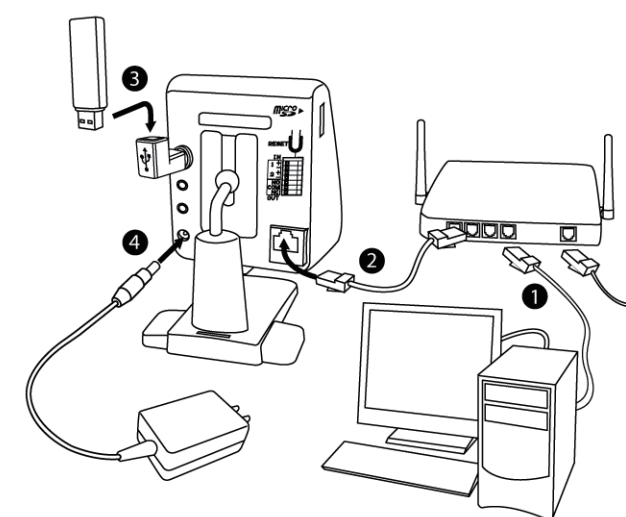
Please check the package contents on your hand. If anything is missing, please don't hesitate to contact your local distributor.

Camera Layout



- 1 Light sensor (only available on IP70)
- 2 Lens
- 3 IR Lamp x 6 (inside, only available on IP70)
- 4 Microphone
- 5 Speaker
- 6 LED status indicator (dotted line shows IP70 LED indicator)
- 7 USB Wireless adaptor connector
- 8 Audio Output
- 9 Reset Button
- 10 microSD card slot (on the side)
- 11 Microphone Input
- 12 Power adaptor port
- 13 Ethernet Port
- 14 I/O port (2 in / 1 out)

Connecting the Cables

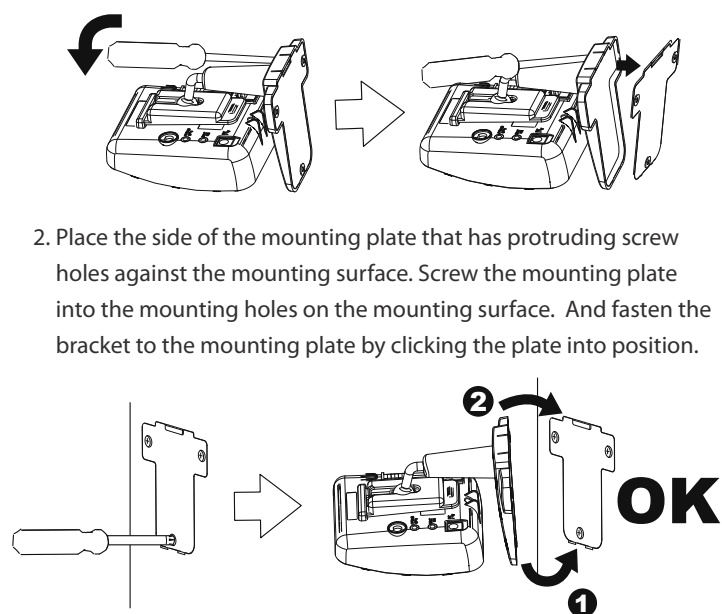


- 1 **LAN cable from PC to hub/router:** If your LAN cable from PC has been connected to the Cable/ADSL modem, please re-connect it to the LAN port of your hub/router.
- 2 **LAN port on camera:** Use the bundled RJ-45 LAN cable to connect the LAN port of the IP camera to the LAN port of your hub/router.
- 3 **Wireless adaptor (Optional accessory):** If you have purchased the Compro USB wireless adaptor, plug it into the USB port of IP camera for wireless reception. The wireless connection port only supports the wireless adaptors from Compro; please do not use other USB adaptors on Compro IP camera.
- 4 **Power:** Attach the power adaptor to the camera's power adaptor port and connect the power plug to a power outlet.

Mounting the Camera

Follow the steps below to mount the camera on a flat surface. Then adjust the camera to the desired viewing angle.

1. Detach the metal mounting plate from the bracket by inserting a flat blade screwdriver into the rectangular hole on the wide end of the bracket base and then pressing the screwdriver downward.



Note: When dismantling the camera, follow step 1 to detach the camera from the mounting plate. Do not pull the camera off the mounting surface by force, as doing so may damage the bracket base permanently and render future camera mounting impossible.

Installing Camera Software

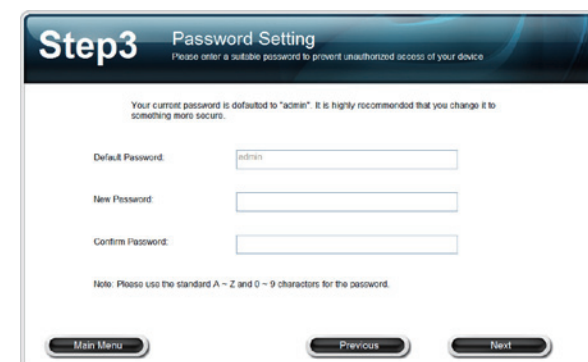
- 1 To begin setup, insert the installation CD into your CD-ROM drive, and the iWizard will start automatically. (If it doesn't, browse the contents of the CD and run the 'iWizard.exe'). Then, select the language and the device you wish to set up.
- 2 The default password is 'admin.' Enter a new password here (please note down your new password). You can also click [Next] to skip this process.

The first step shows how to connect all the cables. Hit [Next] twice to proceed with the 2nd step in which the iWizard scan for available cameras on your local network. Then select your camera from the list, and wait until the live video and camera information are displayed on the right. (You can double-check the device name and the MAC ID which are printed on the serial number sticker on the back of the camera and on the package).

Click [Next] when you're ready. Meanwhile, if you see the Windows Security Alert dialog box during the search, please choose [Unblock].



- 3 Check the camera name, date and time setting.



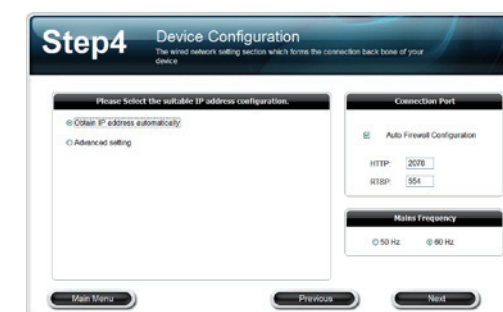
- 3 Check the camera name, date and time setting.



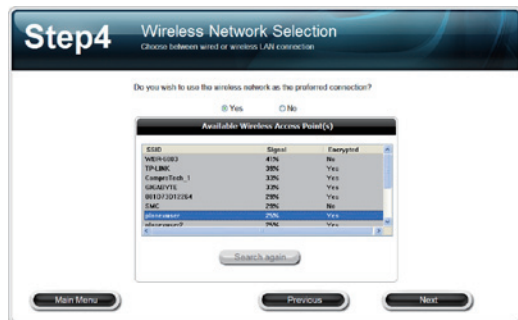
- 4 Choose whether to use Seedonk service to remotely access your camera via Seedonk platform. You may also use a different Seedonk server by clicking on [Advanced Settings]. (If you enable Seedonk service, you cannot use iDDNS service.)



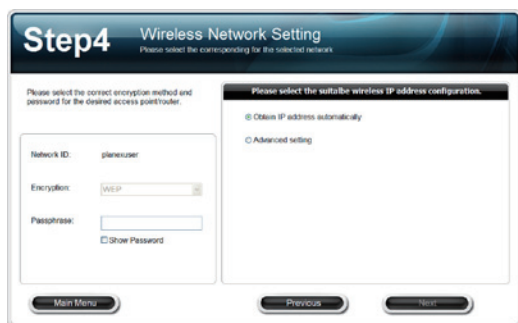
- 5 Choose to obtain IP address automatically (DHCP) or manually configure IP address. Also configure your connection port and local power line frequency here. (If you enabled Seedonk service, you won't see connection port and power line frequency setting here.)



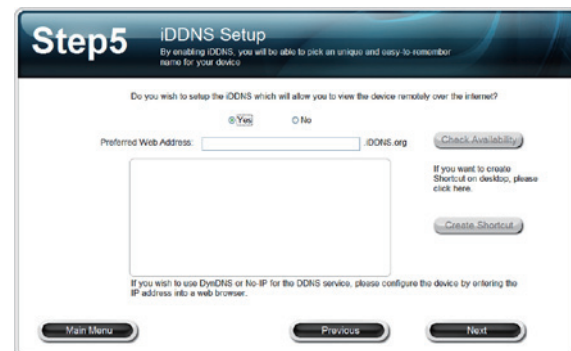
- 6 (Skip here if you do not have Compro wireless adaptor.) If you have purchased and connected the Compro wireless adaptor to your IP camera, you can choose to connect wirelessly by default. The wizard will search for available access points. Then select one access point to use.



- 7 Enter the correct passphrase, and choose the IP address configuration.



- 8 (Skip here if you enabled Seedonk service) If you didn't enable Seedonk service earlier, you can set up iDDNS service here. To do so, click [Yes] and input your desired address name. Then click [Check Availability] to check if the entered address name has been used. When successful, you can click [Create Shortcut] button to create a shortcut on your desktop for convenient access.



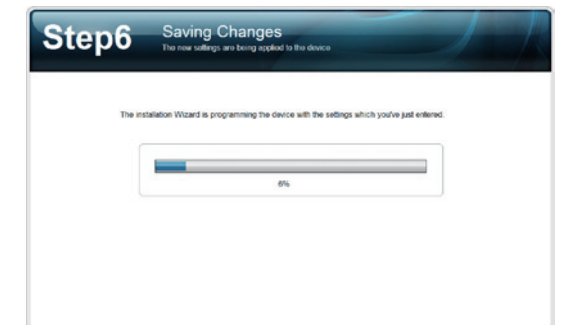
Note: The iDDNS is a free DDNS (Dynamic Domain Name Service) service offered by Compro. If you are using floating IP address, you need to apply for DDNS service to create a hostname that links to your home or office IP address. Having created the iDDNS address name, you can then enter 'http://xxx(input by yourself).iddns.org' into your browser's address bar to access your IP camera. For complete information about iDDNS, refer to the user manual in the installation CD.

- 9 (Skip this part if you didn't enable Seedonk service.) You will be asked to log in to your Seedonk account when you come to Seedonk setup. If you don't have a Seedonk account yet, you can choose to create a Seedonk account and continue with account registration (you need to read and accept the Seedonk end user license, term of service, and privacy statement in order to open a Seedonk account).



After a successful login to your Seedonk account, you may click on [Download and Install] to install Seedonk Messenger. Or click on [Next] to do so later manually.

- 10 The iWizard starts programming your camera based on your settings. Please wait patiently and DO NOT interrupt the process. (If you chose not to use Seedonk service, you'll get to review your settings before saving them.)



- 11 The iWizard performs system diagnosis based on your network settings and alerts you for inappropriate settings (which are marked with a question mark icon).



- 12 The iWizard indicates the setup has completed successfully. You can click on the URL to view the live video now. Click [Yes] if you wish you set up another camera from scratch.



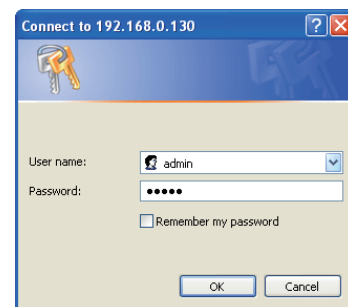
- 13 Finally, you can choose to install the ComproView by choosing [Install]. Then follow the on-screen instructions to install ComproView.



Accessing the Camera via Internet Explorer

Please follow the steps below to access your camera via WebVUer on Internet Explorer:

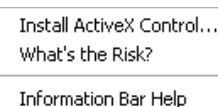
1. Open the Internet Explorer.
2. Enter the camera's IP address in the address bar. (e.g. 192.168.0.100)
3. A dialog box that request the user name and password appears; enter a valid user name and password, and then press OK. The default user name and password are both 'admin'.



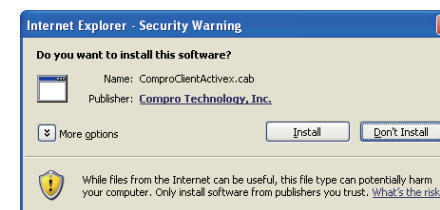
4. After valid user name and password are entered, Internet Explorer will prompt the installation of camera software from 'Compro Technology, Inc.'



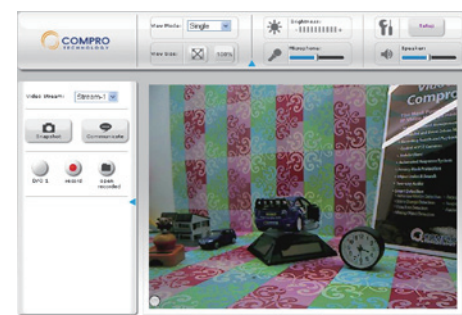
5. Click on the warning message and choose to install the ActiveX.



6. And then the reconfirmation dialog will appear on the screen. Please press [Install] twice to install both the 'USActiveX.cab' and 'ComproClientActivex.cab' on your system.



7. Meanwhile, the Windows Security Alert dialog may appear. Please click [Unblock] to unblock it from firewall.
8. Now you can start using WebVUer on Internet Explorer to watch live video and manage IP camera.



Compro Technical Support Information

Before you request technical support, please check the troubleshooting section in the user manual. You may fill out the online form (www.comprousa.com/feedback/) or directly email to support@comprousa.com.

Compro Technology, Inc.

www.comprosecurity.com | Tel. +886 2 2918 0169 | Fax +886 2 2915 2389
3F, No.12, Alley 6, Lane 45, Pao Shin Road, Hsintien District, New Taipei City 231, Taiwan, R.O.C.

© 2011 Compro Technology, Inc. All rights reserved.

No part of this document may be copied or reproduced in any form or by any means without the prior written consent of Compro Technology, Inc. Compro Technology reserves the right to make revisions to this publication without obligation to notify any person or entity of any such changes.

Compro Technology is the registered logo of Compro Technology, Inc. **seedonk** Seedonk and Seedonk Messenger are registered trademarks of Seedonk Inc. All other company and product names mentioned in this document are registered trademarks of the respective companies.



This device complies with Part 15 of the FCC Rules. Operation is subject to the following two conditions:
(1) This device may not cause harmful interference, and
(2) This device must accept any interference received, including interference that may cause undesired operation.