

Quick Setup Guide

Speco Technologies HU Series 4K IP & 4K TVI Hybrid DVRs
Please go to www.specotech.com/software-updates.html for the latest software

Congratulations on purchasing your new HU DVR. We hope that this Quick Setup Guide will help you quickly setup and configure your new Speco Technologies DVR.
Thank you!

Product Components

DVR Unit (HU Series)



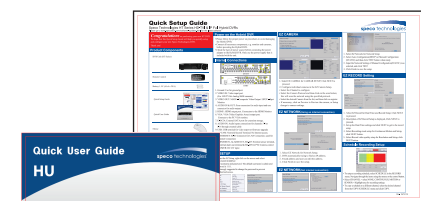
Remote Control



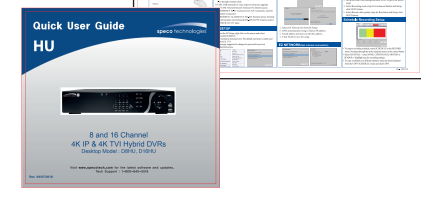
Battery 1.5V (AAA x 2EA)



Quick Setup Guide



Quick User Guide



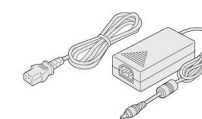
Mouse



Software & Manual CD



Adaptor (D8HU: DC12V 5A, D16HU: DC12V 6.67A) & AC Power Cable(110V or 220V)

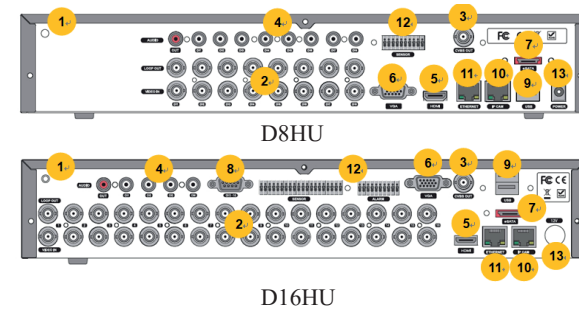


07-2018

Power on the Hybrid DVR

- Please follow the proper power on procedures to avoid damaging the Hybrid DVR.
- Connect all necessary components, e.g. monitor and cameras, before powering the Hybrid DVR.
- Check the type of power source before connecting the power adaptor to the Hybrid DVR. Only use the power supply that is included with the unit.

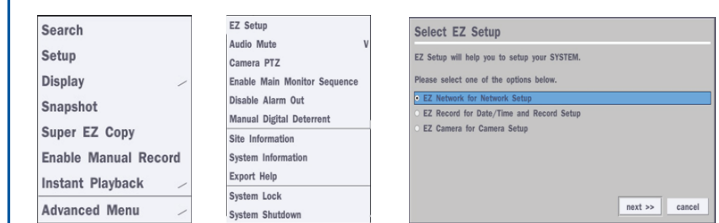
Internal Connections



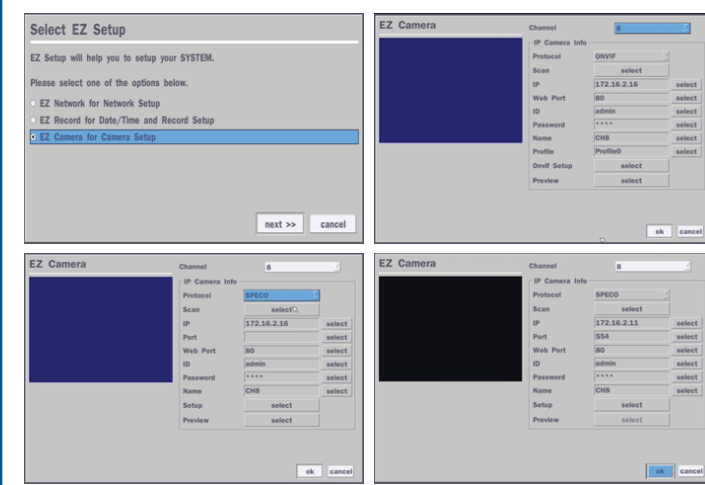
1. Ground: Use for ground port.
2. VIDEO IN: Video input port. (For HD TVI & Analog 960H cameras)
3. VIDEO OUT: MAIN – Composite Video Output / SPOT – Spot Monitor
4. AUDIO IN & OUT: Connectors for audio input and one connector for audio output.
5. HDMI : HDMI output port. Connectors to the HDMI Monitor
6. VGA: VGA (Video Graphics Array) output port. Connects to the PC VGA monitor.
7. E-SATA: External SATA port for extension storage.
8. AUDIO IN: Audio inputs connections for channels 5-16 through external cable. (only D16HU)
9. USB: USB terminal for video export or firmware upgrade
10. IP CAM: Network Second Terminal. No Internet access.
11. ETHERNET: RJ-45 Connector for LAN Connection, used for Internet Connection
12. SENSOR IN, ALARM OUT, RS-485: External sensor terminal, External alarm out terminal & RS-485 for PTZ Camera control
13. POWER: DC12V input

EZ Setup

- To start the EZ Setup, right click on the mouse and select **ADVANCED MENU**
- User have to set the password after the language selection.



EZ Camera



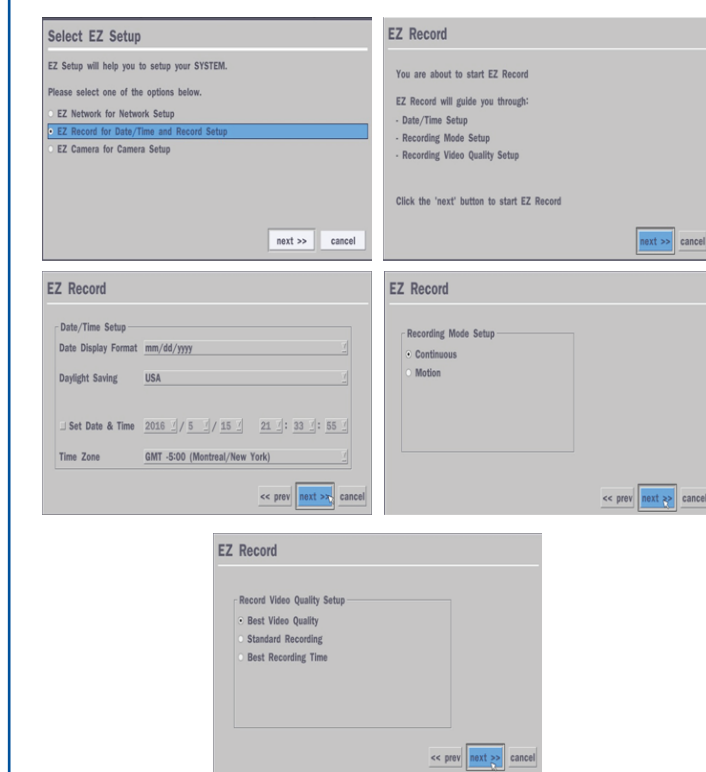
1. Select EZ CAMERA for CAMEAR SETUP, Click NEXT to proceed.
2. Configure individual cameras in the EZ Camera Setup.
 - Select the Channel to configure.
 - Select the Camera Protocol and then click on the scan button; this will scan the network using the specified protocol.
 - Select the desired Camera from the list, and then click on register.
 - If necessary, click on Preview to Preview the camera, or Setup change to camera settings.

EZ Network(Using an internet connection)



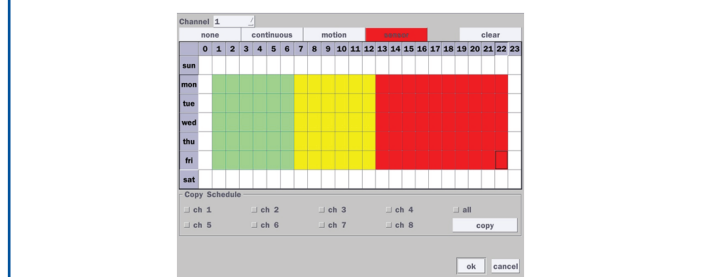
1. Select EZ Network for Network Setup.
2. DVR automatically trying to find an IP address.
3. Found address and user can edit the address.
4. Click Finish to save the setup.

EZ Record Setting



1. Select EZ Record for Date/Time and Record Setup, Click NEXT to proceed.
2. Description of EZ Record Setup is displayed, Click NEXT to proceed.
3. Set up the Date/Time settings and click NEXT to get to the record setup.
4. Select Recording mode setup for Continuous/Motion and Setup, click NEXT button.
5. Select Record video quality setup for Resolution and Setup, click NEXT button.

Schedule Recording Setup



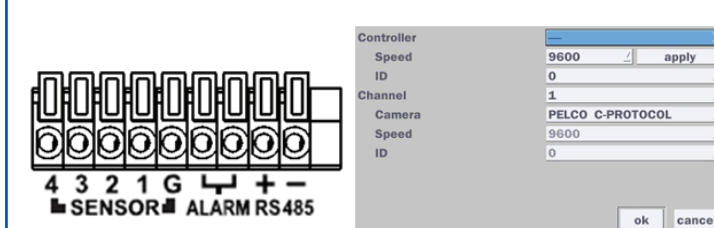
- To setup a recording schedule, select **SCHEDULE** in the RECORD menu. Navigate through the items using the mouse or the control button.
- Select CHANNEL > select NONE, CONTINUOUS, MOTION or SENSOR > Highlight area for recording settings.
- To copy a schedule to a different channel, select the desired channel from the COPY SCHEDULE menu and click COPY.

Rev. 04/07/18

Quick Setup Guide

Speco Technologies HU Series 4K IP & 4K TVI Hybrid DVRs

Pin Definition of Alarm I/O & RS-485



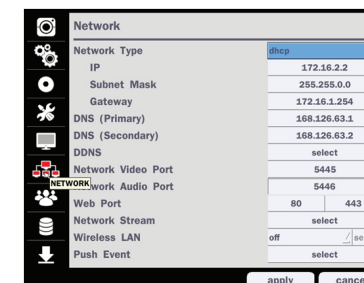
IP Camera Setup



Select the IP Camera tab.

- CHANNEL: Enable/Disable On-Screen Display
- PROTOCOL: Select the Protocol
- SCAN: Will Automatically search the IP Camera
- IP ADDRESS: Enter IP Camera Address
- STREAM PORT: Enter Camera's RTSP Port (Default: 554)
- WEB PORT: Enter Web Port (Default: 80)
- USER ID: Enter User Name of IP Camera
- PASSWORD: Enter Password of IP Camera
- SETUP: IP Camera Video Setup (Resolution, Frame rate and Bitrate)

Network Setup

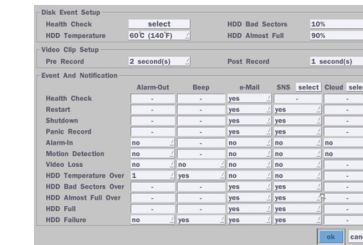


Select the NETWORK tab.

- For DHCP, set the Network Type for DHCP and exit to the menu. The IP address, Subnet Mask, Gateway and DNS settings are retrieved from network servers.
- For Static, set the Network Type to Static. Enter the IP address, Subnet Mask, Gateway and DNS. Obtain this information from the network service provider.
- The Client Access must be ON for the DVR to be accessed remotely.
- Enable DDNS for free DDNS name server

07-2018

Alarm I/O Setup



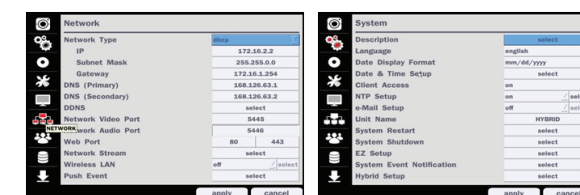
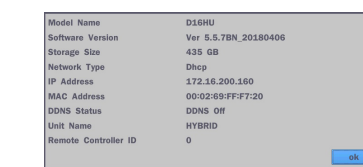
- In the SETUP menu, select the SYSTEM tab and click on System Event Notification.
- Set the sensor, motion and video loss for triggering alarm relay output.
- HDD Error and Video Loss can also trigger beeping

Connect the DVR via Web-Browser Viewer

Setup Requirements

- Make sure PC is connected to the Internet.
- Make sure DVR is already setup following the Network Setup steps. Internet Settings
- Start Internet Explorer;
- go to 'Tools' -> 'Internet Options' -> 'Security' tab.
- Select 'Trusted sites' and click 'Sites' to specify its security setting.
- Enter the IP address of the DVR in this zone
- In the Security Level area, click 'Custom Level'. Under 'ActiveX controls and plug-ins', set all items to 'Enable' or 'Prompt'.
- Click 'OK' to accept the settings and close the 'Security Settings' screen.

Obtain Network Information of the DVR



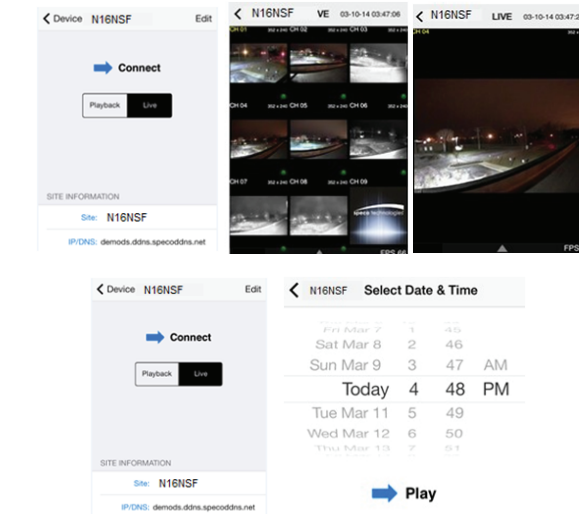
- Obtain IP address from System Information from the Sub Menu.
- In the SETUP menu, select the SYSTEM tab and enable CLIENT ACCESS.
- In the SETUP menu, select the NETWORK tab and click on NETWORK PORT. Obtain the network and web port number.
- Start Internet Explorer and enter the IP address and port of the DVR. - For example: [http://\[ip address\] : \[port\]](http://[ip address] : [port]) -> <http://172.16.2.41:80>
- The ActiveX controls and plug-ins dialog will be prompted for installation.

- Install the plug-ins.
- Click on 'Connect' and enter the username and password of the DVR.
- The default User ID is admin and user has to enter password that set on the initial boot-up procedure.

Mobile View Software

The DVR provides mobile surveillance software for the iPhone® and the Android™.

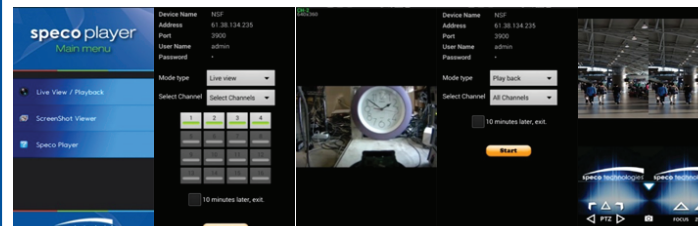
iPhone®



- Search for 'Speco Player' in the App Store and install the app.
- Select the ADD menu and enter site information. Click ADD to save the site information.
- Select the saved site from "Devices".
- Select a channel(s) to view.
- Select Playback/Live then click CONNECT.

Android™

- Search for 'Speco Player' in the Google Play Store and install the app.



- Select the ADD menu and enter site information. Click ADD to save the site information.
- Select the saved site from "Devices" for network connection.
- Select a channel and select Live view or Playback.
- Click START button.

Connect the DVR via SpecoTech Multi-Client Viewer Software



SpecoTech Multi-Client Viewer Software is a multiple site monitoring client software that allows streaming of video and audio, and transmission of alarm signals from the DVRs over the network. The SpecoTech Multi-Client can display up to 16 DVRs and supports dual monitors.

By attaching a microphone and speaker system to devices on site, the user may make bi-directional audio communication over the network.

Refer to the complete manual for more information.

The SpecoTech Multi-Client Viewer Software and manual are included on the CD.

speco technologies®

200 New Highway
Amityville, NY 11701
1-800-645-5516
www.specotech.com

Speco Technologies is constantly developing and improving products. We reserve the right to modify product design and specifications without notice and without incurring any obligation.

Rev. 04/07/18

A

B