

XPS 13

Service Manual

Computer Model: XPS 13-9360
Regulatory Model: P54G
Regulatory Type: P54G002



Notes, cautions, and warnings



NOTE: A NOTE indicates important information that helps you make better use of your computer.



CAUTION: A CAUTION indicates either potential damage to hardware or loss of data and tells you how to avoid the problem.



WARNING: A WARNING indicates a potential for property damage, personal injury, or death.

© 2016 Dell Inc. All rights reserved. This product is protected by U.S. and international copyright and intellectual property laws. Dell and the Dell logo are trademarks of Dell Inc. in the United States and/or other jurisdictions. All other marks and names mentioned herein may be trademarks of their respective companies.

2016 - 09

Rev. A00

Contents

Before working inside your computer.....	9
Before you begin	9
Safety instructions.....	9
Recommended tools.....	10
Screw list.....	11
After working inside your computer.....	13
Removing the base cover.....	14
Procedure.....	14
Replacing the base cover.....	16
Procedure.....	16
Removing the battery.....	17
Prerequisites.....	17
Procedure.....	17
Replacing the battery.....	20
Procedure.....	20
Post-requisites.....	20
Removing the solid-state drive.....	21
Prerequisites.....	21
Procedure.....	21
Replacing the solid-state drive.....	23
Procedure.....	23
Post-requisites.....	24

Removing the wireless card.....	25
Prerequisites.....	25
Procedure.....	25
Replacing the wireless card.....	27
Procedure.....	27
Post-requisites.....	28
Removing the speakers.....	29
Prerequisites.....	29
Procedure.....	29
Replacing the speakers.....	31
Procedure.....	31
Post-requisites.....	31
Removing the coin-cell battery.....	32
Prerequisites.....	32
Procedure.....	32
Replacing the coin-cell battery.....	34
Procedure.....	34
Post-requisites.....	34
Removing the heat sink.....	35
Prerequisites.....	35
Procedure.....	35
Replacing the heat sink.....	37
Procedure.....	37
Post-requisites.....	37


Removing the battery-status light cable.....	38
Prerequisites.....	38
Procedure.....	38
Replacing the battery-status light cable.....	40
Procedure.....	40
Post-requisites.....	40
Removing the touch pad.....	41
Prerequisites.....	41
Procedure.....	41
Replacing the touch pad.....	44
Procedure.....	44
Post-requisites.....	44
Removing the I/O-board cable	45
Prerequisites.....	45
Procedure.....	45
Replacing the I/O-board cable	47
Procedure.....	47
Post-requisites.....	47
Removing the I/O board.....	48
Prerequisites.....	48
Procedure.....	48
Replacing the I/O board.....	51
Procedure.....	51
Post-requisites.....	51

Removing the display assembly.....	52
Prerequisites.....	52
Procedure.....	52
Replacing the display assembly.....	58
Procedure.....	58
Post-requisites.....	59
Removing the display hinge cover.....	60
Prerequisites.....	60
Procedure.....	60
Replacing the display hinge cover.....	62
Procedure.....	62
Post-requisites.....	62
Removing the antenna.....	63
Prerequisites.....	63
Procedure.....	63
Replacing the antenna.....	65
Procedure.....	65
Post-requisites.....	65
Removing the system board.....	66
Prerequisites.....	66
Procedure.....	66
Replacing the system board.....	71
Procedure.....	71
Post-requisites.....	72
Entering the Service Tag in the BIOS setup program.....	72



Removing the power-adapter port.....	73
Prerequisites.....	73
Procedure.....	73
Replacing the power-adapter port.....	75
Procedure.....	75
Post-requisites.....	75
Removing the fan.....	76
Prerequisites.....	76
Procedure.....	76
Replacing the fan.....	79
Procedure.....	79
Post-requisites.....	79
Removing the keyboard.....	80
Prerequisites.....	80
Procedure.....	81
Replacing the keyboard.....	84
Procedure.....	84
Post-requisites.....	84
Removing the palm-rest assembly.....	85
Prerequisites.....	85
Procedure.....	86
Replacing the palm-rest assembly.....	88
Procedure.....	88
Post-requisites.....	88
Flashing the BIOS.....	89

Diagnostics.....	90
Getting help and contacting Dell.....	91
Self-help resources.....	91
Contacting Dell.....	91

Before working inside your computer


 **NOTE:** The images in this document may differ from your computer depending on the configuration you ordered.


Before you begin


- 1 Save and close all open files and exit all open applications.
- 2 Shut down your computer. Click **Start** →  **Power** → **Shut down**.
 **NOTE:** If you are using a different operating system, see the documentation of your operating system for shut-down instructions.
- 3 Disconnect your computer and all attached devices from their electrical outlets.
- 4 Disconnect all cables such as telephone cables and network cables, from your computer.
- 5 Disconnect all attached devices and peripherals, such as keyboard, mouse, and monitor, from your computer.
- 6 Remove any media card and optical disc from your computer, if applicable.
- 7 Close the display and turn the computer over.


Safety instructions


Use the following safety guidelines to protect your computer from potential damage and ensure your personal safety.


 **WARNING:** Before working inside your computer, read the safety information that shipped with your computer. For more safety best practices, see the Regulatory Compliance home page at www.dell.com/regulatory_compliance.


 **WARNING:** Disconnect all power sources before opening the computer cover or panels. After you finish working inside the computer, replace all covers, panels, and screws before connecting to the electrical outlet.


 **CAUTION:** To avoid damaging the computer, ensure that the work surface is flat and clean.

 **CAUTION:** To avoid damaging the components and cards, handle them by their edges, and avoid touching pins and contacts.

 **CAUTION:** You should only perform troubleshooting and repairs as authorized or directed by the Dell technical assistance team. Damage due to servicing that is not authorized by Dell is not covered by your warranty. See the safety instructions that shipped with the product or at www.dell.com/regulatory_compliance.

 **CAUTION:** Before touching anything inside your computer, ground yourself by touching an unpainted metal surface, such as the metal at the back of the computer. While you work, periodically touch an unpainted metal surface to dissipate static electricity, which could harm internal components.

 **CAUTION:** When you disconnect a cable, pull on its connector or on its pull tab, not on the cable itself. Some cables have connectors with locking tabs or thumb-screws that you must disengage before disconnecting the cable. When disconnecting cables, keep them evenly aligned to avoid bending any connector pins. When connecting cables, ensure that the ports and connectors are correctly oriented and aligned.

 **CAUTION:** Press and eject any installed card from the media-card reader.

Recommended tools

The procedures in this document may require the following tools:

- Phillips screwdriver
- Torx #5 (T5) screwdriver
- Plastic scribe

Screw list

Component	Secured to	Screw type	Quantity
Antenna	Display back-cover	M2x4	4
Display hinges	Display back-cover	M2.5x6	4
Fingerprint reader bracket (optional)	Palm-rest assembly	M1.6x1.5	1
Keyboard	Palm-rest assembly	M1.6x1.5	31
Touch pad	Palm rest	M2x2	4
Speakers	Palm-rest assembly	M2x2	4
Power-adapter port	Palm-rest assembly	M2x3	1
System board	Palm-rest assembly	M1.6x3	7
I/O board	Palm-rest assembly	M1.6x3	2
Heat sink	System board	M2x3	4
Hinge brackets	Palm-rest assembly	M2.5x4	4
Hard drive (SSD)	Hard-drive (SSD) bracket	M2x2	1
Wireless card	System board	M2x3	1
Display-cable bracket	System board	M2x3	2
Battery	Palm-rest assembly	M2x2	3
Battery	Palm-rest assembly	M1.6x4	1
Base cover	Palm-rest assembly	M2x3	8

Component	Secured to	Screw type	Quantity
Base cover	Palm-rest assembly	M1.6x6	1

After working inside your computer



CAUTION: Leaving stray or loose screws inside your computer may severely damage your computer.

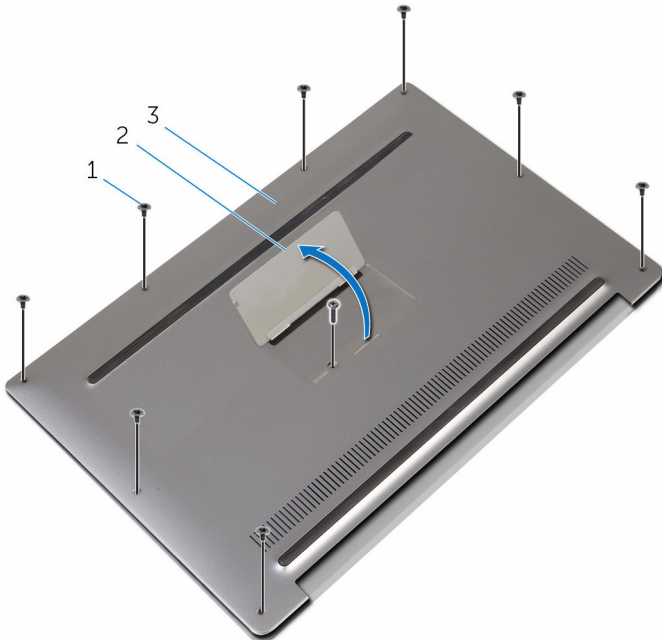
- 1 Replace all screws and ensure that no stray screws remain inside your computer.
- 2 Connect any external devices, peripherals, or cables you removed before working on your computer.
- 3 Replace any media cards, discs, or any other parts that you removed before working on your computer.
- 4 Connect your computer and all attached devices to their electrical outlets.
- 5 Turn on your computer.

Removing the base cover

! **WARNING:** Before working inside your computer, read the safety information that shipped with your computer and follow the steps in [Before working inside your computer](#). After working inside your computer, follow the instructions in [After working inside your computer](#). For more safety best practices, see the Regulatory Compliance home page at www.dell.com/regulatory_compliance.

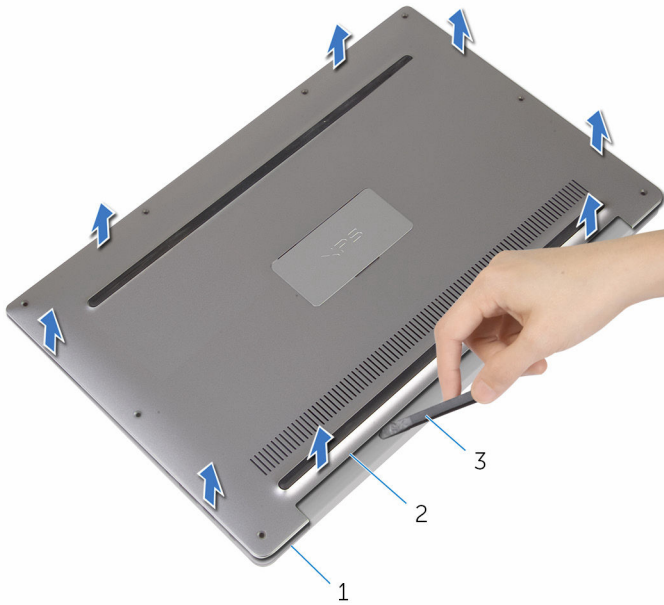
Procedure

- 1 Using your fingertips, open the system badge.
- 2 Remove the screws that secure the base cover to the palm-rest assembly.



- | | | | |
|---|--------------------------------------|---|--------------|
| 1 | M2x3 screws (8) and M1.6x6 screw (1) | 2 | system badge |
| 3 | base cover | | |

- 3 Starting from the back of the computer, pry up the base cover using a plastic scribe.
- 4 Lift the base cover off the palm-rest assembly.



- | | | | |
|---|--------------------|---|------------|
| 1 | palm-rest assembly | 2 | base cover |
| 3 | plastic scribe | | |

Replacing the base cover



WARNING: Before working inside your computer, read the safety information that shipped with your computer and follow the steps in [Before working inside your computer](#). After working inside your computer, follow the instructions in [After working inside your computer](#). For more safety best practices, see the Regulatory Compliance home page at www.dell.com/regulatory_compliance.

Procedure

- 1 Align the screw holes on the base cover with the screw holes on the palm-rest assembly and snap the base cover into place.
- 2 Using your fingertips, turn the system badge over.
- 3 Replace the screws that secure the base cover to the palm-rest assembly.
- 4 Turn the system badge over and keep it in place.

Removing the battery



WARNING: Before working inside your computer, read the safety information that shipped with your computer and follow the steps in [Before working inside your computer](#). After working inside your computer, follow the instructions in [After working inside your computer](#). For more safety best practices, see the Regulatory Compliance home page at www.dell.com/regulatory_compliance.

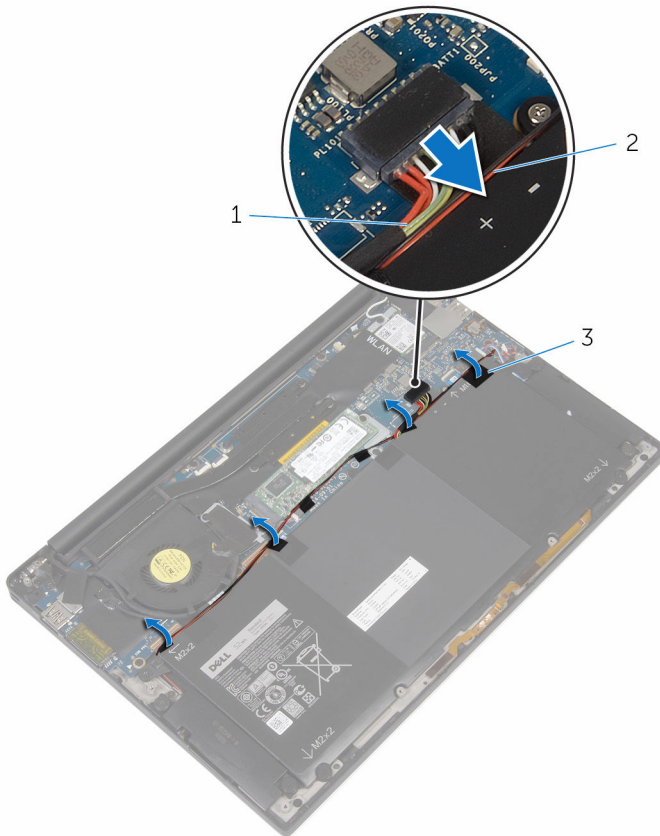
Prerequisites

Remove the [base cover](#).

Procedure

- 1 Disconnect the battery cable from the system board.

2 Peel off the tape that secures the speaker cable to the battery.



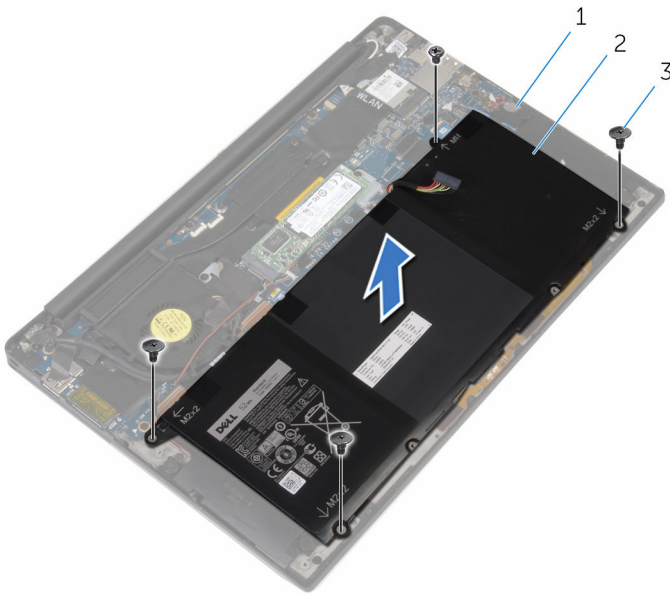
1 battery cable

2 speaker cable

3 tape (6)

3 Remove the screws that secure the battery to the palm-rest assembly.

- 4 Lift the battery off the palm-rest assembly.



- 1 palm-rest assembly 2 battery
3 M2x2 screws (3) and M1.6x4
screw (1)

- 5 Turn the computer over, open the display, and press the power button for about 5 seconds to ground the computer.

Replacing the battery



WARNING: Before working inside your computer, read the safety information that shipped with your computer and follow the steps in [Before working inside your computer](#). After working inside your computer, follow the instructions in [After working inside your computer](#). For more safety best practices, see the Regulatory Compliance home page at www.dell.com/regulatory_compliance.


Procedure

- 1 Align the screw holes on the battery with the screw holes on the palm-rest assembly.
- 2 Adhere the tape that secures the speaker cable to the battery.
- 3 Replace the screws that secure the battery to the palm-rest assembly.
- 4 Connect the battery cable to the system board.


Post-requisites

Replace the [base cover](#).

Removing the solid-state drive

 **WARNING:** Before working inside your computer, read the safety information that shipped with your computer and follow the steps in [Before working inside your computer](#). After working inside your computer, follow the instructions in [After working inside your computer](#). For more safety best practices, see the Regulatory Compliance home page at www.dell.com/regulatory_compliance.

 **CAUTION:** Solid-state drives are fragile. Exercise care when handling the solid-state drive.

 **CAUTION:** To avoid data loss, do not remove the solid-state drive while the computer is in sleep or on state.

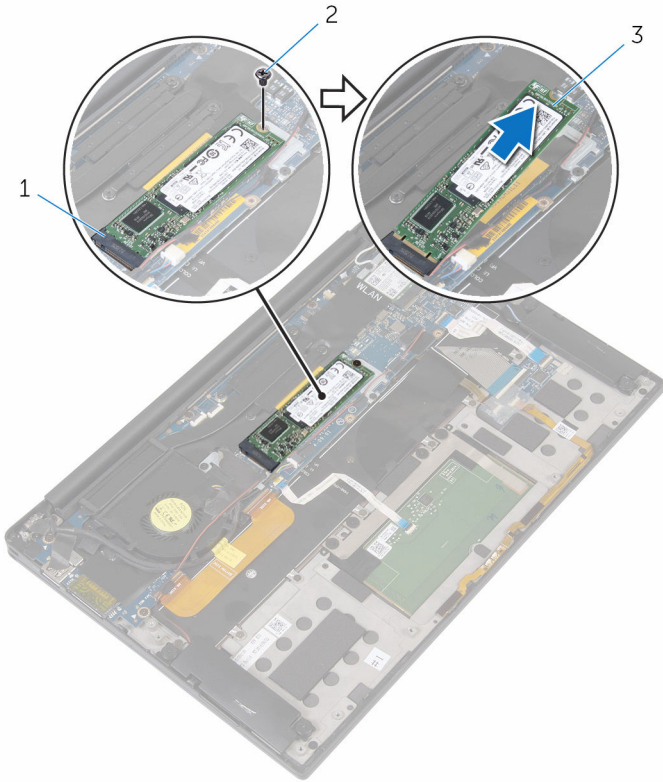
Prerequisites

- 1 Remove the [base cover](#).
- 2 Remove the [battery](#).

Procedure

- 1 Remove the screw that secures the solid-state drive to the system board.

2 Slide and remove the solid-state drive from the solid-state drive slot.





1 solid-state drive slot

2 M2x2 screw (1)

3 solid-state drive

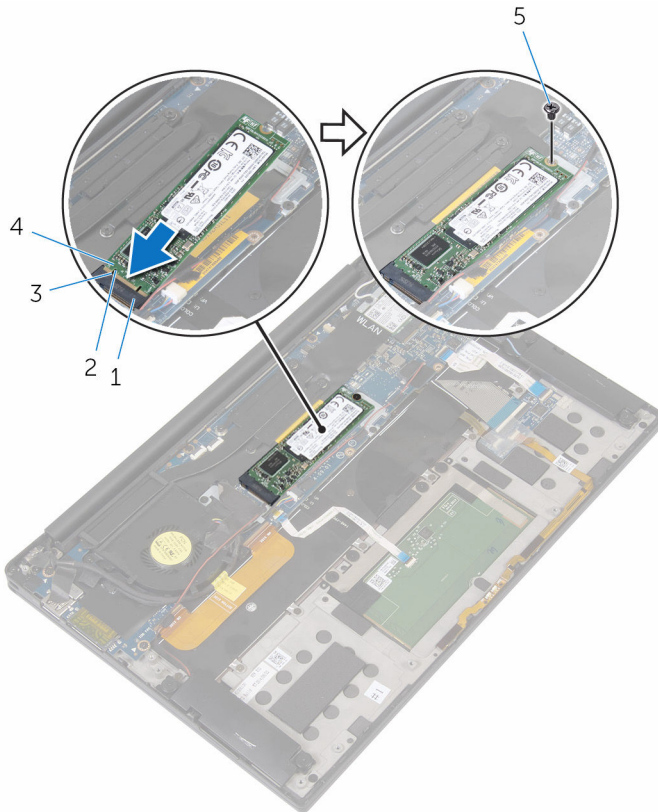
Replacing the solid-state drive

-  **WARNING:** Before working inside your computer, read the safety information that shipped with your computer and follow the steps in [Before working inside your computer](#). After working inside your computer, follow the instructions in [After working inside your computer](#). For more safety best practices, see the Regulatory Compliance home page at www.dell.com/regulatory_compliance.
-  **CAUTION:** Solid-state drives are fragile. Exercise care when handling the solid-state drive.

Procedure

- 1 Align the notches on the solid-state drive with the tabs in the solid-state drive slot.
- 2 Slide the solid-state drive at an angle into the solid-state drive slot.

- 3** Press the other end of the solid-state drive down and replace the screw that secures the solid-state drive to the system board.



- | | | | |
|---|------------------------|---|-------------------|
| 1 | solid-state drive slot | 2 | tab |
| 3 | notch | 4 | solid-state drive |
| 5 | M2x2 screw (1) | | |

Post-requisites

- 1 Replace the [battery](#).
- 2 Replace the [base cover](#).

Removing the wireless card



WARNING: Before working inside your computer, read the safety information that shipped with your computer and follow the steps in [Before working inside your computer](#). After working inside your computer, follow the instructions in [After working inside your computer](#). For more safety best practices, see the Regulatory Compliance home page at www.dell.com/regulatory_compliance.

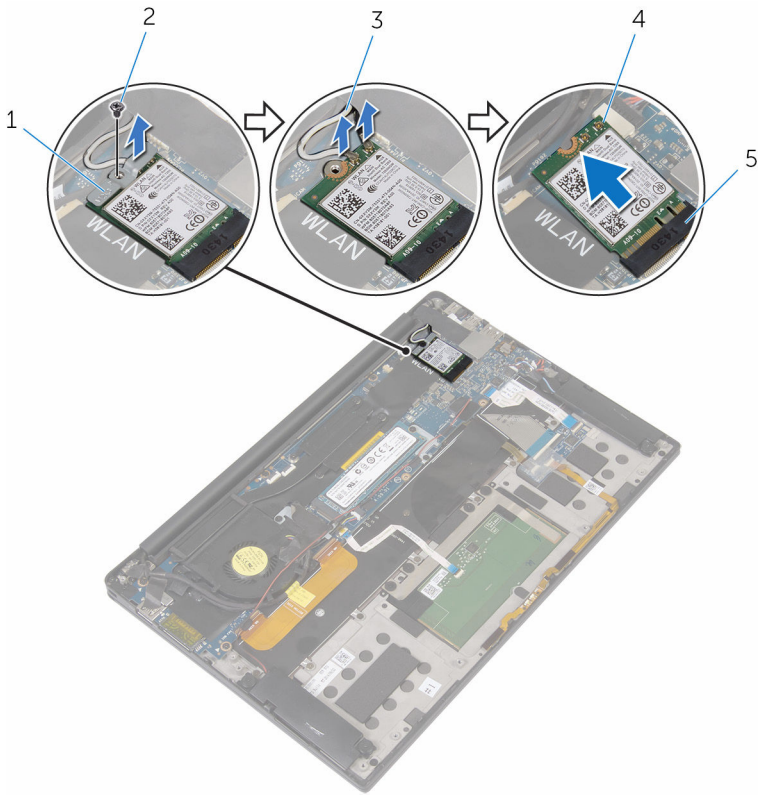
Prerequisites

- 1 Remove the [base cover](#).
- 2 Remove the [battery](#).

Procedure

- 1 Remove the screw that secures the wireless-card bracket to the system board.
- 2 Lift the wireless-card bracket off the wireless card.
- 3 Disconnect the antenna cables from the wireless card.

4 Slide and remove the wireless card out of the wireless-card slot.



- 1 wireless-card bracket
- 3 antenna cables (2)
- 5 wireless-card slot


- 2 M2x3 screw (1)
- 4 wireless card

Replacing the wireless card

 **WARNING:** Before working inside your computer, read the safety information that shipped with your computer and follow the steps in [Before working inside your computer](#). After working inside your computer, follow the instructions in [After working inside your computer](#). For more safety best practices, see the Regulatory Compliance home page at www.dell.com/regulatory_compliance.

Procedure

- 1 Align the notches on the wireless card with the tabs in the wireless-card slot.

 **CAUTION:** To avoid damage to the wireless card, never place cables under the wireless card.

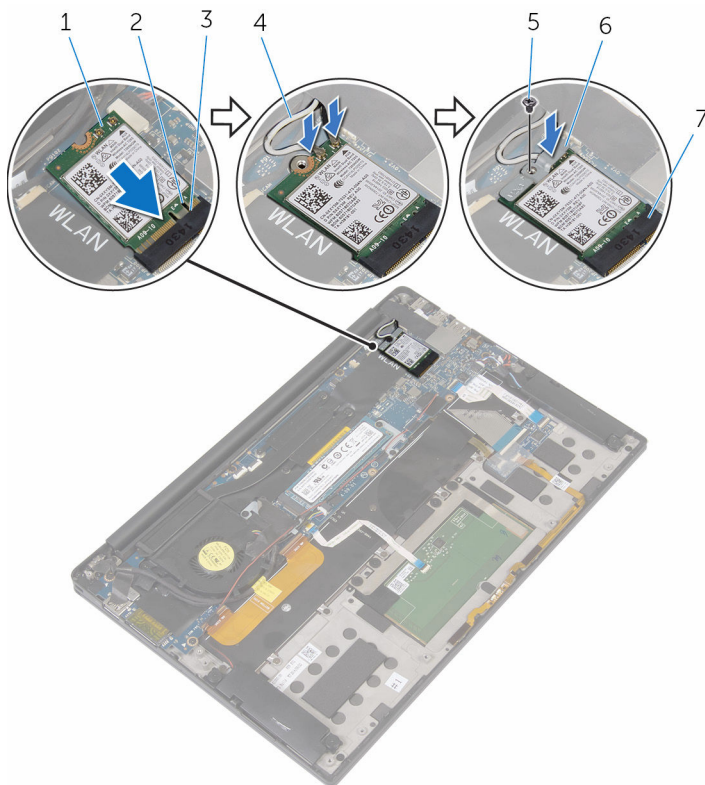
- 2 Slide the wireless-card at an angle into the wireless-card slot.
- 3 Connect the antenna cables to the wireless card.

The following table provides the antenna cable color schemes for the wireless card supported by your computer.

Connectors on the wireless card	Antenna-cable color
Main (white triangle)	White
Auxiliary (black triangle)	Black

- 4 Press the other end of the wireless card down.
- 5 Place the wireless-card bracket on the wireless card.

- 6 Replace the screw that secures the wireless-card bracket to the system board.



- | | | | |
|---|--------------------|---|-----------------------|
| 1 | wireless card | 2 | notch |
| 3 | tab | 4 | antenna cables (2) |
| 5 | M2x3 screw (1) | 6 | wireless-card bracket |
| 7 | wireless-card slot | | |

Post-requisites

- 1 Replace the [battery](#).
- 2 Replace the [base cover](#).

Removing the speakers



WARNING: Before working inside your computer, read the safety information that shipped with your computer and follow the steps in [Before working inside your computer](#). After working inside your computer, follow the instructions in [After working inside your computer](#). For more safety best practices, see the Regulatory Compliance home page at www.dell.com/regulatory_compliance.

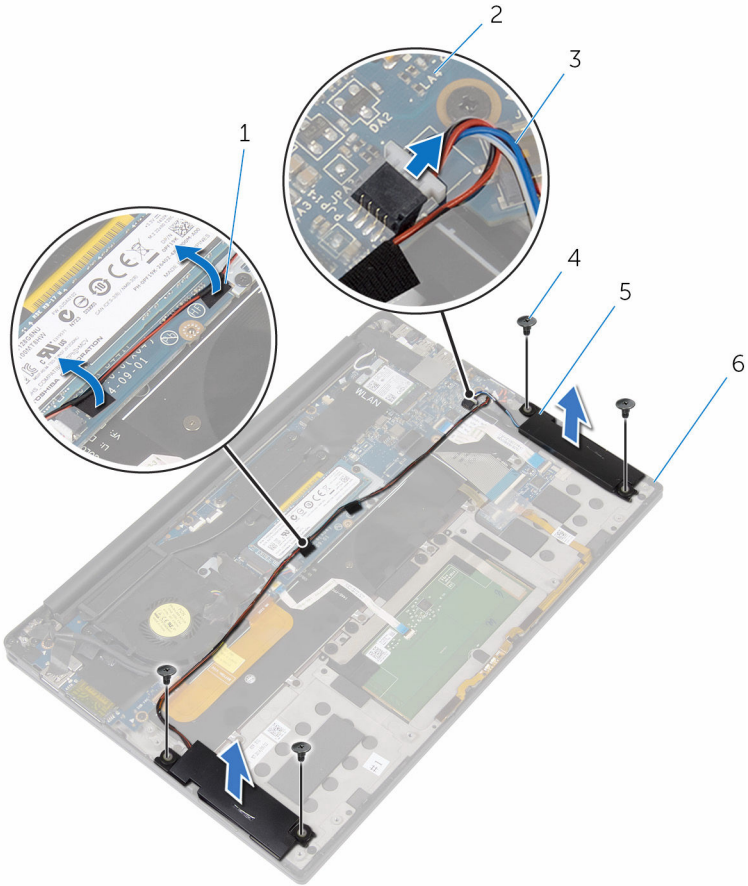
Prerequisites

- 1 Remove the [base cover](#).
- 2 Remove the [battery](#).

Procedure

- 1 Disconnect the speaker cable from the system board.
- 2 Remove the screws that secure the speakers to the palm-rest assembly.
- 3 Note the speaker-cable routing and peel off the tape that secures the speaker cable to the system board.

4 Lift the speakers, along with its cables, off the palm-rest assembly.



1 tape (2)

3 speaker cable

5 speakers (2)

2 system board

4 M2x2 screws (4)

6 palm-rest assembly

Replacing the speakers



WARNING: Before working inside your computer, read the safety information that shipped with your computer and follow the steps in [Before working inside your computer](#). After working inside your computer, follow the instructions in [After working inside your computer](#). For more safety best practices, see the Regulatory Compliance home page at www.dell.com/regulatory_compliance.



Procedure

- 1 Using the alignment posts on the palm-rest assembly, place the speakers on the palm-rest assembly.
- 2 Replace the screws that secure the speakers to the palm-rest assembly.
- 3 Route the speaker cable on the system board and adhere the tape to the system board.
- 4 Connect the speaker cable to the system board.

Post-requisites

- 1 Replace the [battery](#).
- 2 Replace the [base cover](#).

Removing the coin-cell battery

-  **WARNING:** Before working inside your computer, read the safety information that shipped with your computer and follow the steps in [Before working inside your computer](#). After working inside your computer, follow the instructions in [After working inside your computer](#). For more safety best practices, see the Regulatory Compliance home page at www.dell.com/regulatory_compliance.
-  **CAUTION:** Removing the coin-cell battery resets the BIOS setup program's settings to default. It is recommended that you note the BIOS setup program's settings before removing the coin-cell battery.

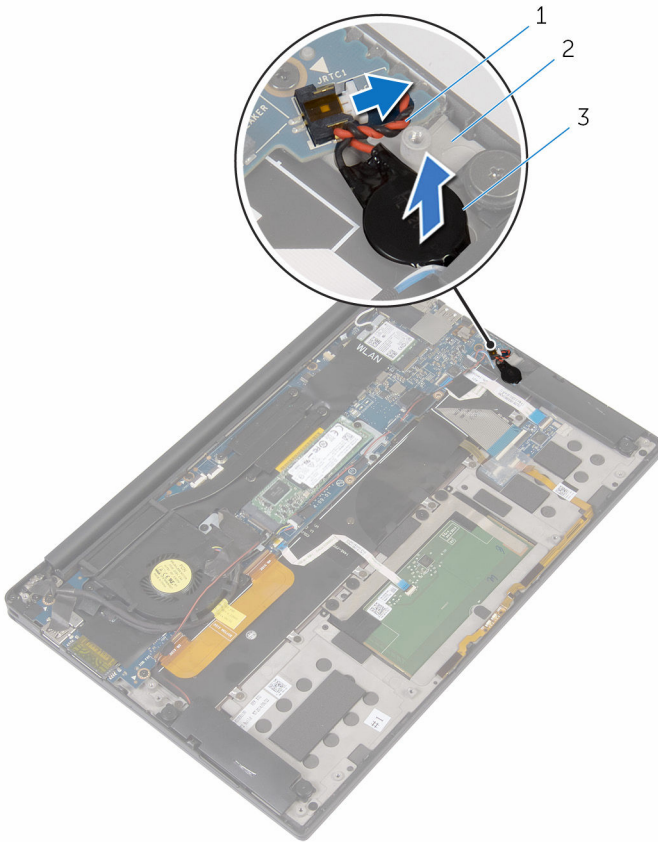
Prerequisites

- 1 Remove the [base cover](#).
- 2 Remove the [battery](#).

Procedure

- 1 Disconnect the coin-cell battery cable from the system board.

- 2 Note the location of the coin-cell battery and pry it off the palm-rest assembly.



- 1 coin-cell battery cable
- 3 coin-cell battery

- 2 palm-rest assembly

Replacing the coin-cell battery



WARNING: Before working inside your computer, read the safety information that shipped with your computer and follow the steps in [Before working inside your computer](#). After working inside your computer, follow the instructions in [After working inside your computer](#). For more safety best practices, see the Regulatory Compliance home page at www.dell.com/regulatory_compliance.


Procedure


- 1 Adhere the coin-cell battery to the palm-rest assembly.
- 2 Connect the coin-cell battery cable to the system board.


Post-requisites

- 1 Replace the [battery](#).
- 2 Replace the [base cover](#).

Removing the heat sink

 **WARNING:** Before working inside your computer, read the safety information that shipped with your computer and follow the steps in [Before working inside your computer](#). After working inside your computer, follow the instructions in [After working inside your computer](#). For more safety best practices, see the Regulatory Compliance home page at www.dell.com/regulatory_compliance.

 **WARNING:** The heat sink may become hot during normal operation. Allow sufficient time for the heat sink to cool before you touch it.

 **CAUTION:** For maximum cooling of the processor, do not touch the heat transfer areas on the heat sink. The oils in your skin can reduce the heat transfer capability of the thermal grease.

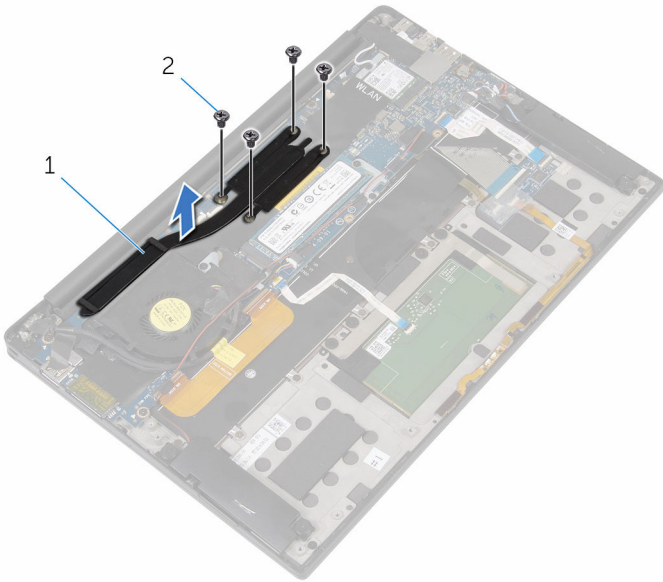
Prerequisites

- 1 Remove the [base cover](#).
- 2 Remove the [battery](#).

Procedure

- 1 In sequential order (as indicated on the heat-sink assembly), remove the screws that secure the heat sink to the system board.


2 Lift the heat sink off the system board.





1 heat sink

2 M2x3 screws (4)

Replacing the heat sink

 **WARNING:** Before working inside your computer, read the safety information that shipped with your computer and follow the steps in [Before working inside your computer](#). After working inside your computer, follow the instructions in [After working inside your computer](#). For more safety best practices, see the Regulatory Compliance home page at www.dell.com/regulatory_compliance.

 **CAUTION:** Incorrect alignment of the heat sink can damage the system board and processor.

 **NOTE:** The original thermal grease can be reused if the original system board and heat sink are reinstalled together. If either the system board or the heat sink is replaced, use the thermal pad provided in the kit to ensure that thermal conductivity is achieved.


Procedure


- 1 Align the screw holes on the heat sink with the screw holes on the system board.
- 2 Replace the screws that secure the heat sink to the system board.

Post-requisites

- 1 Replace the [battery](#).
- 2 Replace the [base cover](#).

Removing the battery-status light cable

 **WARNING:** Before working inside your computer, read the safety information that shipped with your computer and follow the steps in [Before working inside your computer](#). After working inside your computer, follow the instructions in [After working inside your computer](#). For more safety best practices, see the Regulatory Compliance home page at www.dell.com/regulatory_compliance.

 **NOTE:** The battery-status light cable is an assembly that includes LED indicators and a digital-array microphone.

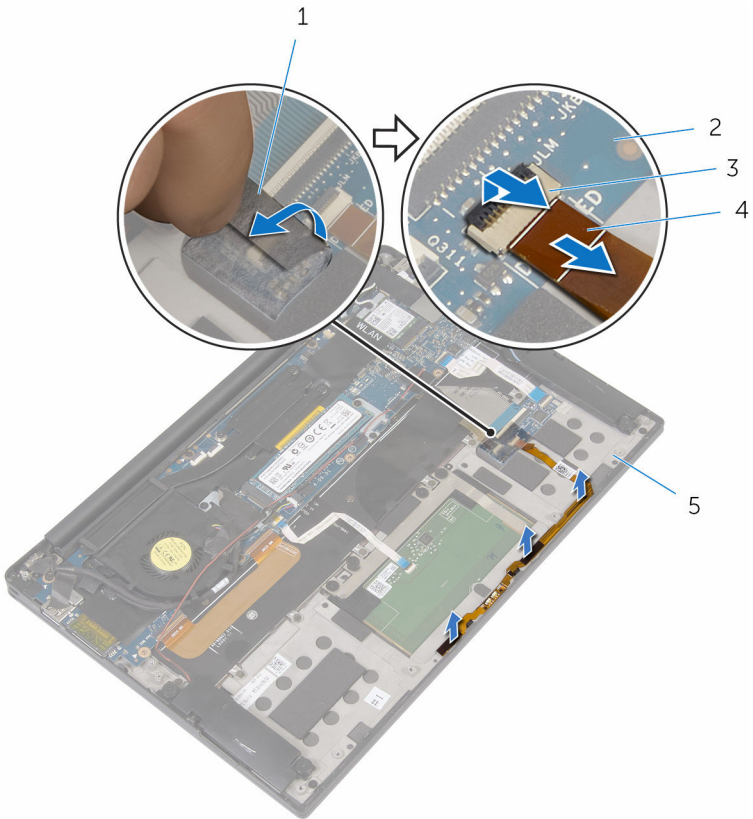
Prerequisites

- 1 Remove the [base cover](#).
- 2 Remove the [battery](#).

Procedure

- 1 Peel off the tape that secures the battery-status light cable to the keyboard-controls board.
- 2 Open the latch and disconnect the battery-status light cable from the keyboard-controls board.

3 Note the battery-status light cable routing and peel off the cable from the palm-rest assembly.




- 1 tape
- 3 latch
- 5 palm-rest assembly

- 2 keyboard-controls board
- 4 battery-status light cable

Replacing the battery-status light cable

 **WARNING:** Before working inside your computer, read the safety information that shipped with your computer and follow the steps in [Before working inside your computer](#). After working inside your computer, follow the instructions in [After working inside your computer](#). For more safety best practices, see the Regulatory Compliance home page at www.dell.com/regulatory_compliance.

 **NOTE:** The battery-status light cable is an assembly that includes LED indicators and a digital-array microphone.

Procedure

- 1 Using the alignment posts, place the battery-status light cable on the palm-rest assembly.
- 2 Route the battery-status light cable through the routing guides and adhere it to the palm-rest assembly.
- 3 Slide the battery-status light cable into the battery-status light cable connector and close the latch to secure the cable.
- 4 Adhere the tape that secures the battery-status light cable to the keyboard-controls board.

Post-requisites

- 1 Replace the [battery](#).
- 2 Replace the [base cover](#).

Removing the touch pad



WARNING: Before working inside your computer, read the safety information that shipped with your computer and follow the steps in [Before working inside your computer](#). After working inside your computer, follow the instructions in [After working inside your computer](#). For more safety best practices, see the Regulatory Compliance home page at www.dell.com/regulatory_compliance.

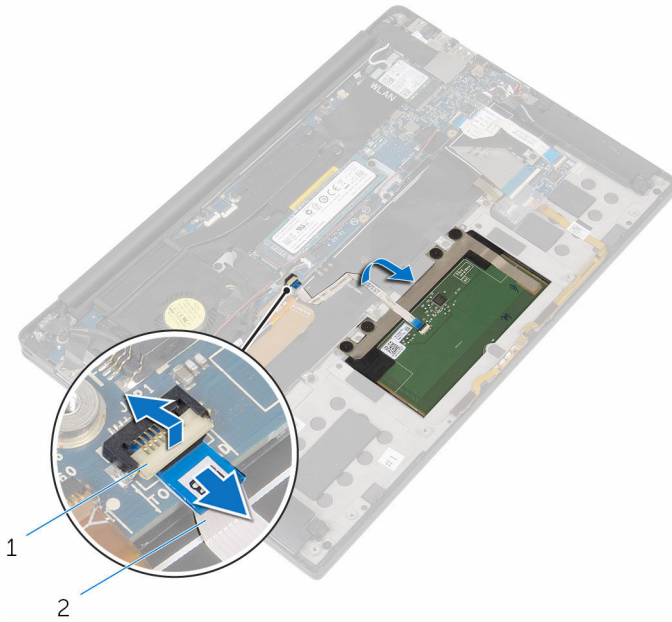
Prerequisites

- 1 Remove the [base cover](#).
- 2 Remove the [battery](#).

Procedure

- 1 Open the latch and disconnect the touch-pad cable from the system board.

- 2 Peel off the touch-pad cable from the keyboard and palm-rest assembly.

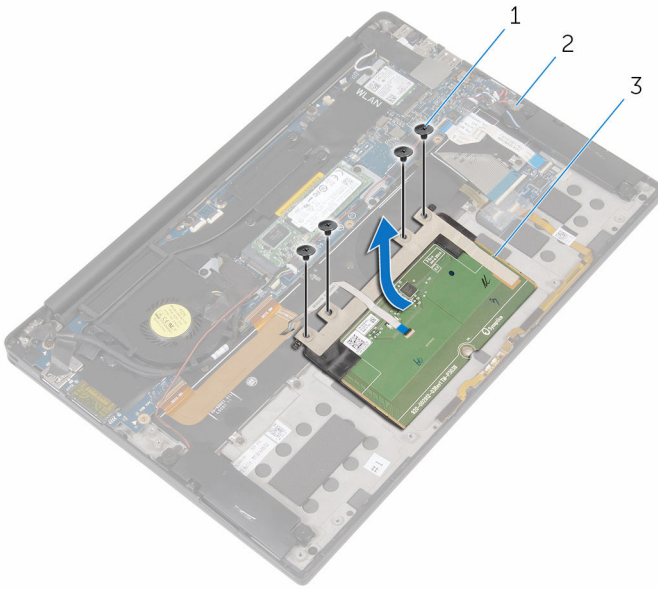


1 latch

2 touch-pad cable

- 3 Remove the screws that secure the touch pad to the palm-rest assembly. If applicable, peel off any foam adhering the touch pad to the palm-rest assembly.

- 4 Lift the touch pad from the inner edge and remove it from the palm-rest assembly.



- 1 M2x2 screws (4)
3 touch pad

- 2 palm-rest assembly

Replacing the touch pad



WARNING: Before working inside your computer, read the safety information that shipped with your computer and follow the steps in [Before working inside your computer](#). After working inside your computer, follow the instructions in [After working inside your computer](#). For more safety best practices, see the Regulatory Compliance home page at www.dell.com/regulatory_compliance.

Procedure

- 1 Align the screw holes on the touch pad with the screw holes on the palm-rest assembly.
- 2 Replace the screws that secure the touch pad to the palm-rest assembly.
- 3 Slide the touch-pad cable into the connector on the system board and close the latch to secure the cable.
- 4 Route the touch-pad cable and adhere the cable to the keyboard and palm-rest assembly.

Post-requisites

- 1 Replace the [battery](#).
- 2 Replace the [base cover](#).

Removing the I/O-board cable



WARNING: Before working inside your computer, read the safety information that shipped with your computer and follow the steps in [Before working inside your computer](#). After working inside your computer, follow the instructions in [After working inside your computer](#). For more safety best practices, see the Regulatory Compliance home page at www.dell.com/regulatory_compliance.

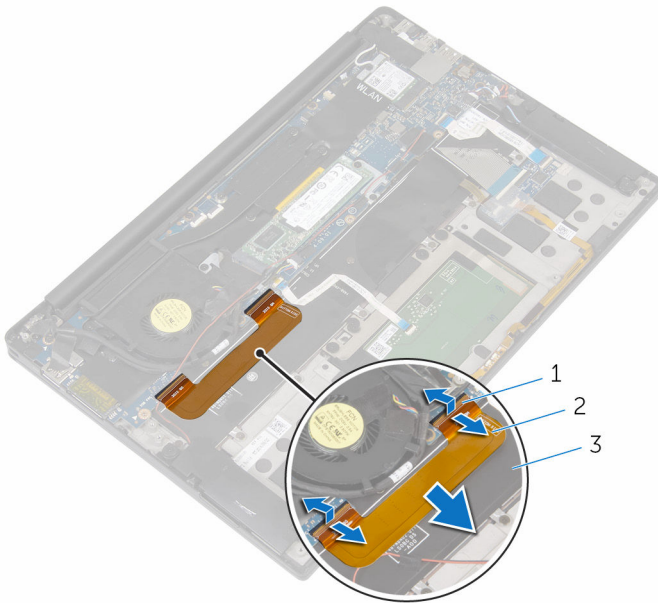
Prerequisites

- 1 Remove the [base cover](#).
- 2 Remove the [battery](#).

Procedure

- 1 Open the latches and disconnect the I/O-board cable from the system board and the I/O board.

- 2 Note the I/O-board cable routing as well as its orientation, and then peel off the cable from the keyboard.



- 1 latches (2)
3 keyboard

- 2 I/O-board cable

Replacing the I/O-board cable



WARNING: Before working inside your computer, read the safety information that shipped with your computer and follow the steps in [Before working inside your computer](#). After working inside your computer, follow the instructions in [After working inside your computer](#). For more safety best practices, see the Regulatory Compliance home page at www.dell.com/regulatory_compliance.

Procedure

- 1 Slide both ends of the I/O-board cable into their connectors on the system board and I/O board, then close the latches to secure the cable.
- 2 Adhere the I/O-board cable to the keyboard.

Post-requisites

- 1 Replace the [battery](#).
- 2 Replace the [base cover](#).

Removing the I/O board



WARNING: Before working inside your computer, read the safety information that shipped with your computer and follow the steps in [Before working inside your computer](#). After working inside your computer, follow the instructions in [After working inside your computer](#). For more safety best practices, see the Regulatory Compliance home page at www.dell.com/regulatory_compliance.

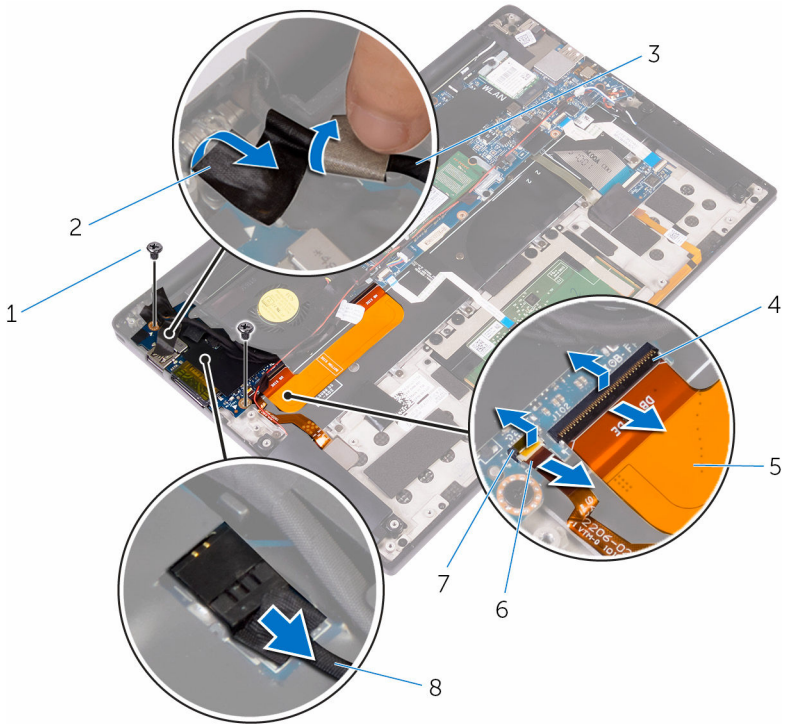
Prerequisites

- 1 Remove the [base cover](#).
- 2 Remove the [battery](#).

Procedure

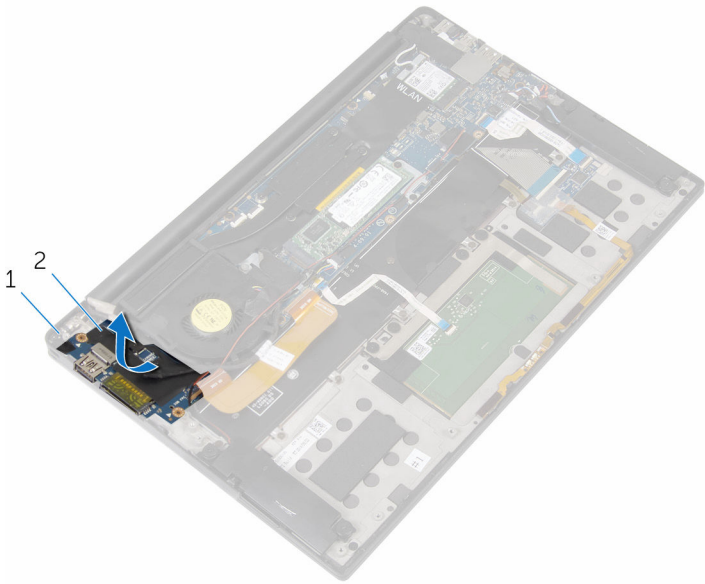
- 1 Remove the screws that secure the I/O board to the palm-rest assembly.
- 2 Peel off the tape that secures the display cable to the I/O board.
- 3 Disconnect the media-card reader cable from the I/O board.
- 4 Open the latch and disconnect the I/O-board cable from the I/O board.

- 5 Open the latch and disconnect the fingerprint-reader cable (optional) from the I/O board.



- | | | | |
|---|-------------------|---|-------------------------------------|
| 1 | M1.6x3 screws (2) | 2 | tape |
| 3 | display cable | 4 | latch |
| 5 | I/O-board cable | 6 | fingerprint-reader cable (optional) |
| 7 | latch | 8 | media-card reader cable |

- 6 Starting from the outer edge, slide the I/O board from under the fan and remove it from the palm-rest assembly.



1 palm-rest assembly

2 I/O board

Replacing the I/O board



WARNING: Before working inside your computer, read the safety information that shipped with your computer and follow the steps in [Before working inside your computer](#). After working inside your computer, follow the instructions in [After working inside your computer](#). For more safety best practices, see the Regulatory Compliance home page at www.dell.com/regulatory_compliance.

Procedure

- 1 Slide the I/O board under the fan and align the screw holes on the I/O board with the screw holes on the palm-rest assembly.
- 2 Align the screw hole on the display cable with the screw hole on the I/O board.
- 3 Replace the screws that secure the I/O board to the palm-rest assembly.
- 4 Slide the I/O-board cable into the I/O board and close the latch to secure the cable.
- 5 Slide the fingerprint-reader cable (optional) into the I/O board and close the latch to secure the cable.
- 6 Connect the media-card reader cable to the I/O board.
- 7 Adhere the tape that secures the display cable to the I/O board.

Post-requisites

- 1 Replace the [battery](#).
- 2 Replace the [base cover](#).

Removing the display assembly



WARNING: Before working inside your computer, read the safety information that shipped with your computer and follow the steps in [Before working inside your computer](#). After working inside your computer, follow the instructions in [After working inside your computer](#). For more safety best practices, see the Regulatory Compliance home page at www.dell.com/regulatory_compliance.

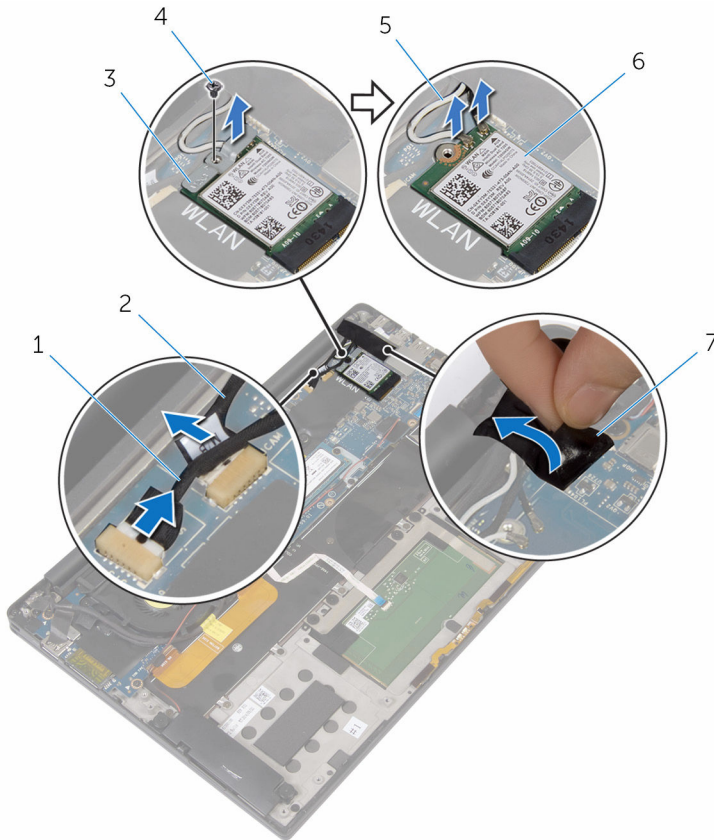
Prerequisites

- 1 Remove the [base cover](#).
- 2 Remove the [battery](#).

Procedure

- 1 Disconnect the touch-screen cable (optional) and camera cable from the system board.
- 2 Peel off the tape that secures the antenna cables to the system board.
- 3 Remove the screw that secures the wireless-card bracket to the system board.
- 4 Lift the wireless-card bracket off the wireless card.

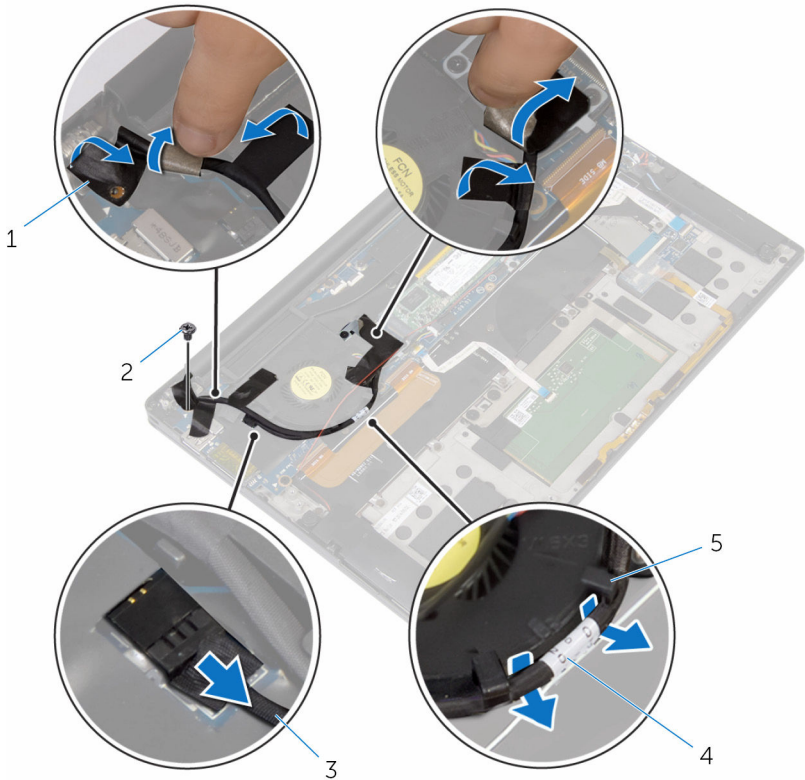
- 5** Disconnect the antenna cables from the wireless card.



- | | | | |
|---|-------------------------------|---|----------------|
| 1 | touch-screen cable (optional) | 2 | camera cable |
| 3 | wireless-card bracket | 4 | M2x3 screw (1) |
| 5 | antenna cables (2) | 6 | wireless card |
| 7 | tape | | |

- 6** Remove the screw that secures the display cable to the I/O board.
- 7** Peel off the tapes that secure the display cable to the fan and the I/O board.
- 8** Disconnect the media-card reader cable from the I/O board.
- 9** Note the display-cable routing and remove the cable from the routing guides on the fan.

10 Peel off the tape from the display-cable bracket.



1 tapes (4)

3 media-card reader cable

5 routing guides (2)

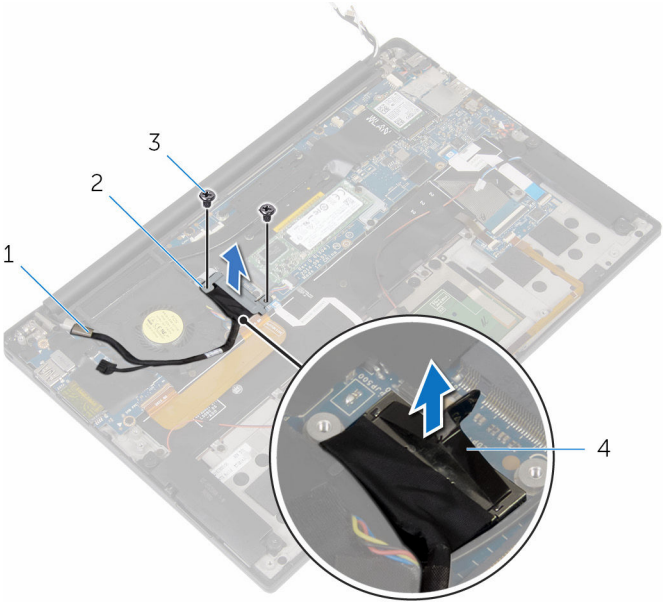
2 screw

4 display cable

11 Remove the screws that secure the display-cable bracket to the system board.

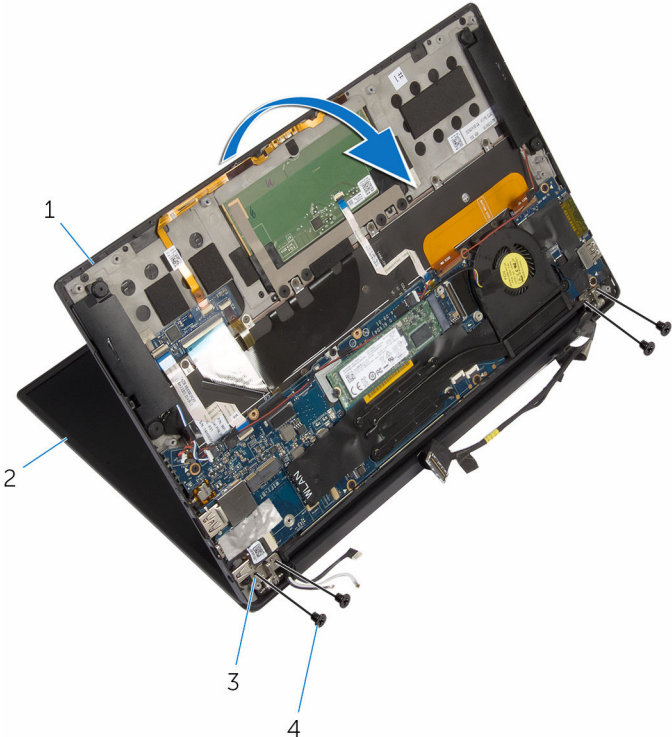
12 Lift the display-cable bracket off the display cable.

13 Using the pull tab, disconnect the display cable from the system board.



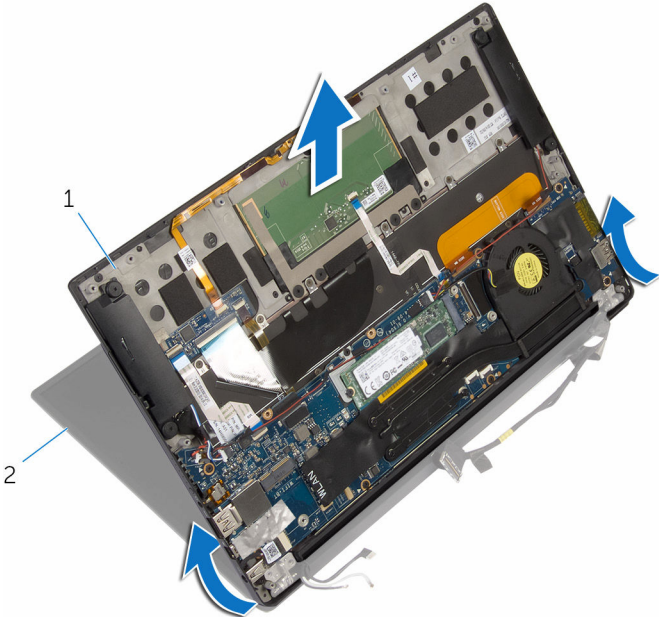
- 1 display cable
- 2 display-cable bracket
- 3 M2x3 screws (2)
- 4 pull tab

14 Open the palm-rest assembly at an angle, and then remove the screws that secure the display hinges to the palm-rest assembly.



- 1 palm-rest assembly
- 2 display assembly
- 3 display hinges (2)
- 4 M2.5x4 screws (4)

15 Slide and remove the palm-rest assembly from the display hinges.



1 palm-rest assembly

2 display assembly

Replacing the display assembly



WARNING: Before working inside your computer, read the safety information that shipped with your computer and follow the steps in [Before working inside your computer](#). After working inside your computer, follow the instructions in [After working inside your computer](#). For more safety best practices, see the Regulatory Compliance home page at www.dell.com/regulatory_compliance.

Procedure


- 1 Slide the palm-rest assembly under the display hinges and align the screw holes on the palm-rest assembly with the screw holes on the display hinges.
- 2 Replace the screws that secure the palm-rest assembly to the display hinges.
- 3 Close the palm-rest assembly.
- 4 Connect the display cable to the system board.
- 5 Align the screw holes on the display-cable bracket with the screw holes on the system board.
- 6 Replace the screws that secure the display-cable bracket to system board.
- 7 Adhere the tape over the display-cable bracket.
- 8 Route the display cable through the routing guides on the fan.
- 9 Connect the media-card reader cable to the I/O board.
- 10 Adhere the tape that secures the display cable to the fan and the I/O board.
- 11 Replace the screw that secures the display cable to the I/O board.
- 12 Connect the antenna cables to the wireless card.
- 13 Align the screw hole on the wireless-card bracket with the screw hole on the system board.
- 14 Replace the screw that secures the wireless-card bracket to the system board.
- 15 Adhere the tape that secures the antenna cables to the system board.
- 16 Connect the touch-screen cable (optional) and camera cable to the system board.

Post-requisites

- 1 Replace the [battery](#).
- 2 Replace the [base cover](#).

Removing the display hinge cover

 **WARNING:** Before working inside your computer, read the safety information that shipped with your computer and follow the steps in [Before working inside your computer](#). After working inside your computer, follow the instructions in [After working inside your computer](#). For more safety best practices, see the Regulatory Compliance home page at www.dell.com/regulatory_compliance.

 **NOTE:** The display hinge cover is included as part of the display assembly. The cover can, however, be replaced separately.

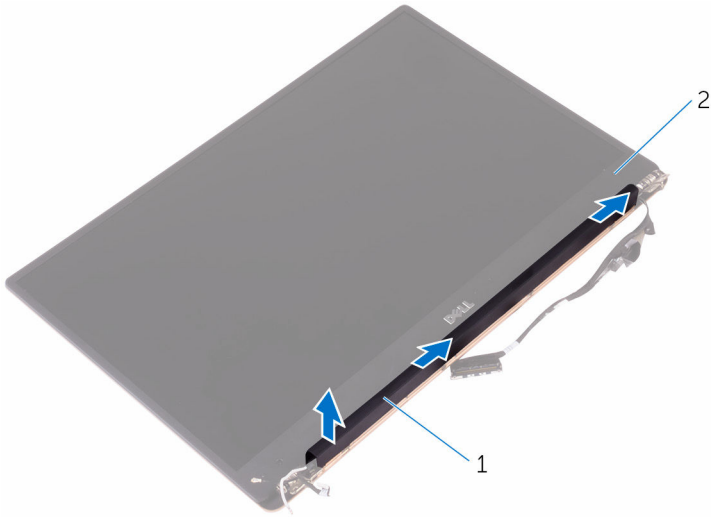
Prerequisites

- 1 Remove the [base cover](#).
- 2 Remove the [battery](#).
- 3 Remove the [display assembly](#).

Procedure

- 1 With the display facing you, slide the display hinge cover towards the right.


2 Lift the display hinge cover off the display assembly.




1 display hinge cover

2 display assembly

Replacing the display hinge cover

 **WARNING:** Before working inside your computer, read the safety information that shipped with your computer and follow the steps in [Before working inside your computer](#). After working inside your computer, follow the instructions in [After working inside your computer](#). For more safety best practices, see the Regulatory Compliance home page at www.dell.com/regulatory_compliance.

 **NOTE:** The display hinge cover is included as part of the display assembly. The cover can, however, be replaced separately.

Procedure

- 1 Align the display hinge cover to the base of the display assembly.
- 2 With the display facing you, press and slide the display hinge cover to the left, to lock it into position.

Post-requisites

- 1 Replace the [display assembly](#).
- 2 Replace the [battery](#).
- 3 Replace the [base cover](#).

Removing the antenna



WARNING: Before working inside your computer, read the safety information that shipped with your computer and follow the steps in [Before working inside your computer](#). After working inside your computer, follow the instructions in [After working inside your computer](#). For more safety best practices, see the Regulatory Compliance home page at www.dell.com/regulatory_compliance.



NOTE: The antenna is included as part of the display assembly. The antenna can, however, be replaced separately.

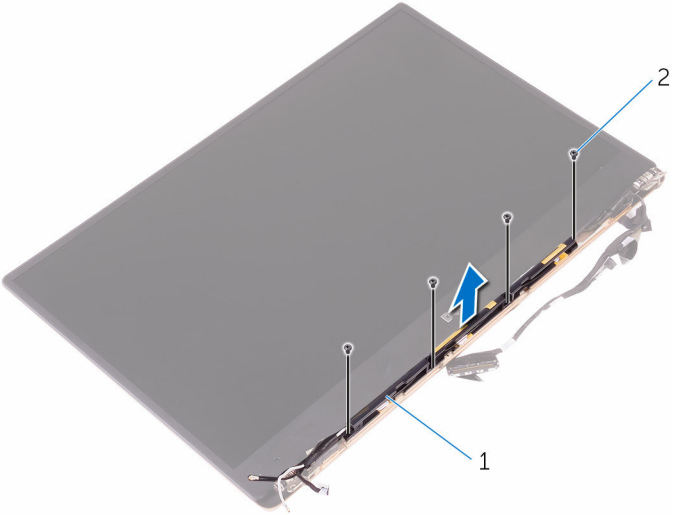
Prerequisites

- 1 Remove the [base cover](#).
- 2 Remove the [battery](#).
- 3 Remove the [display assembly](#).
- 4 Remove the [display hinge cover](#).

Procedure

- 1 Remove the screws that secure the antenna to the display assembly.

2 Lift the antenna off the display assembly.



1 antenna

2 M2x4 screws (4)

Replacing the antenna



WARNING: Before working inside your computer, read the safety information that shipped with your computer and follow the steps in [Before working inside your computer](#). After working inside your computer, follow the instructions in [After working inside your computer](#). For more safety best practices, see the Regulatory Compliance home page at www.dell.com/regulatory_compliance.



NOTE: The antenna is included as part of the display assembly. The antenna can, however, be replaced separately.

Procedure

- 1 Align the screw holes on the antenna with the screw holes on the display assembly.
- 2 Replace the screws that secure the antenna to the display assembly.

Post-requisites

- 1 Replace the [display hinge cover](#).
- 2 Replace the [display assembly](#).
- 3 Replace the [battery](#).
- 4 Replace the [base cover](#).

Removing the system board



WARNING: Before working inside your computer, read the safety information that shipped with your computer and follow the steps in [Before working inside your computer](#). After working inside your computer, follow the instructions in [After working inside your computer](#). For more safety best practices, see the Regulatory Compliance home page at www.dell.com/regulatory_compliance.



NOTE: Your computer's Service Tag is stored in the system board. You must enter the Service Tag in the BIOS setup program after you replace the system board.



NOTE: Replacing the system board removes any changes you have made to the BIOS using the BIOS setup program. You must make the appropriate changes again after you replace the system board.



NOTE: Before disconnecting the cables from the system board, note the location of the connectors so that you can reconnect the cables correctly after you replace the system board.

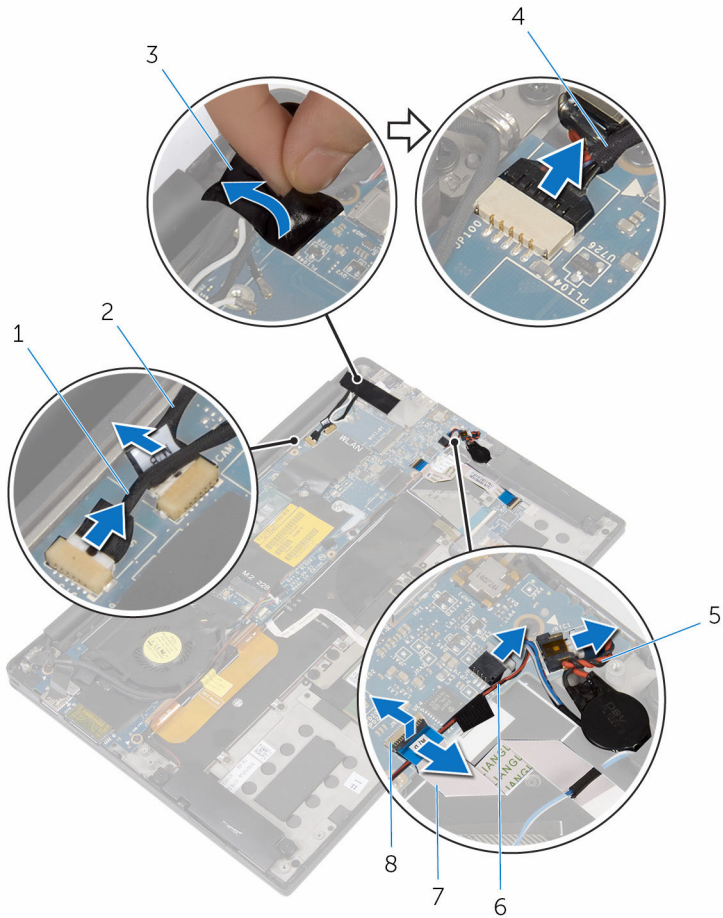
Prerequisites

- 1 Remove the [base cover](#).
- 2 Remove the [battery](#).
- 3 Remove the [wireless card](#).
- 4 Remove the [solid-state drive](#).
- 5 Remove the [heat sink](#).

Procedure

- 1 Peel off the tape that secures the antenna cables and power-adaptor port cable to the system board.
- 2 Disconnect the camera cable, touch-screen cable (optional), power-adaptor port cable, and coin-cell battery cable from the system board.

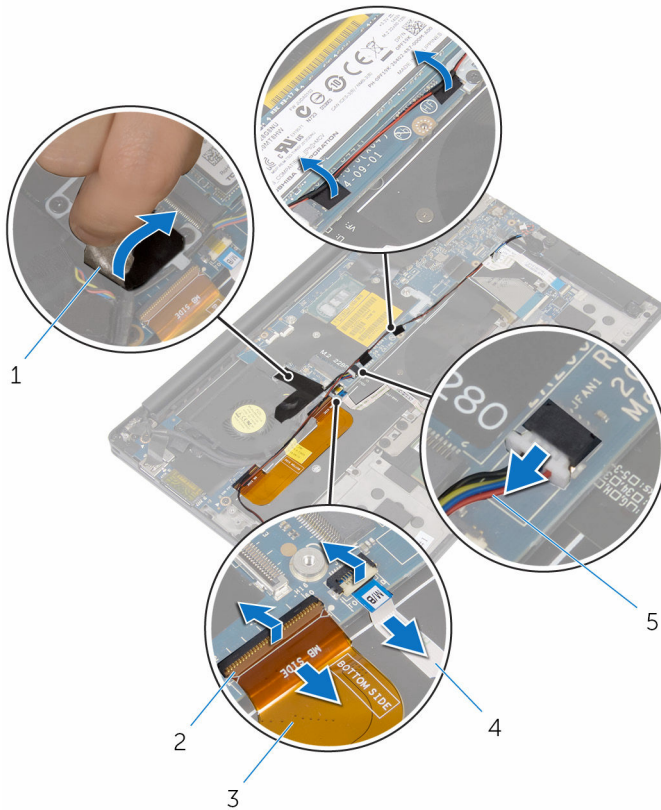
- 3** Open the latch and disconnect the keyboard-controls board cable from the system board.



- | | | | |
|---|-------------------------------|---|--------------------------|
| 1 | touch-screen cable (optional) | 2 | camera cable |
| 3 | tape | 4 | power-adaptor port cable |
| 5 | coin-cell battery cable | 6 | speaker cable |
| 7 | keyboard-controls board cable | 8 | latch |

- 4** Peel off the tape from the display-cable bracket.
- 5** Peel off the tape that secures the speaker cable to the system board.
- 6** Disconnect the fan cable from the system board.

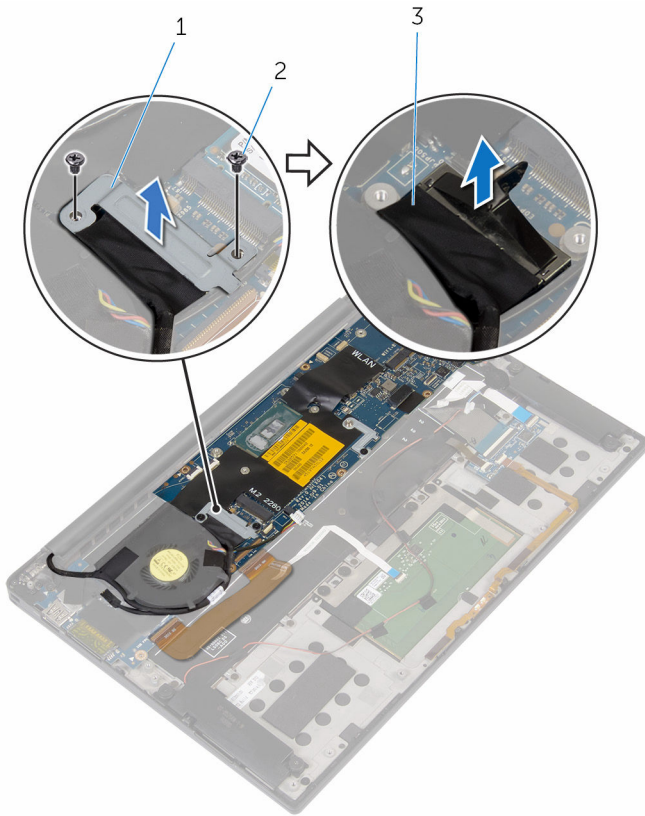
- 7 Open the latches and disconnect the I/O-board cable and the touch-pad cable from the system board.



- | | | | |
|---|-----------------|---|-----------------|
| 1 | tape (3) | 2 | latches (2) |
| 3 | I/O-board cable | 4 | touch-pad cable |
| 5 | fan cable | | |

- 8 Remove the screws that secure the display-cable bracket to the system board.
- 9 Lift the display-cable bracket off the display cable.

10 Using the pull tab, disconnect the display cable from the system board.



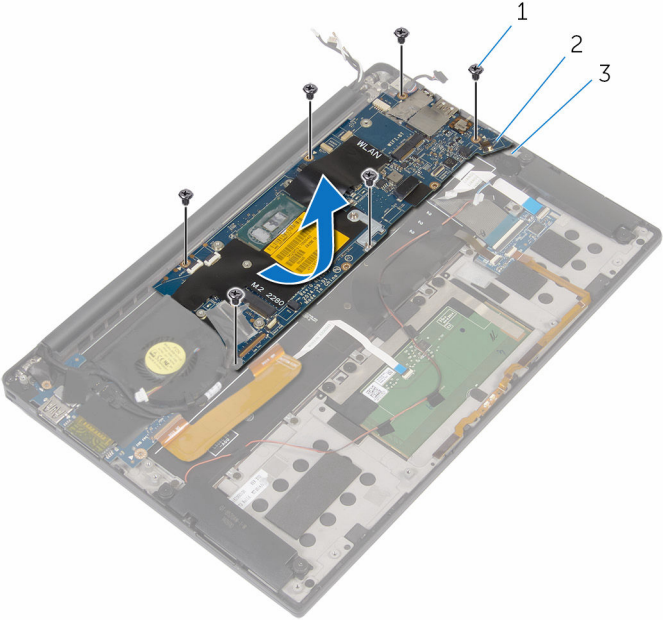
1 display-cable bracket

2 M2x3 screws (2)

3 display cable

11 Remove the screws that secure the system board to the palm-rest assembly.

12 Starting from the outer edge, lift the system board at an angle and remove it from under the tabs on the palm-rest assembly.



- 1 M1.6x3 screws (6)
- 3 palm-rest assembly

2 system board

Replacing the system board



WARNING: Before working inside your computer, read the safety information that shipped with your computer and follow the steps in [Before working inside your computer](#). After working inside your computer, follow the instructions in [After working inside your computer](#). For more safety best practices, see the Regulatory Compliance home page at www.dell.com/regulatory_compliance.



NOTE: Your computer's Service Tag is stored in the system board. You must enter the Service Tag in the BIOS setup program after you replace the system board.



NOTE: Replacing the system board removes any changes you have made to the BIOS using the BIOS setup program. You must make the appropriate changes again after you replace the system board.

Procedure

- 1 Slide the system board under the tabs on the palm-rest assembly and align the screw holes on the system board with the screw holes on the palm-rest assembly.
- 2 Replace the screws that secure the system board to the palm-rest assembly.
- 3 Slide the I/O-board cable, the touch-pad cable, and the keyboard-controls board cable into the system board and close the connector latches to secure the cables.
- 4 Connect the camera cable, the touch-screen cable (optional), the power-adapter port cable, the coin-cell battery cable, the speaker cable, the fan cable, and the display cable to the system board.
- 5 Adhere the tape that secures the antenna cables and power-adapter port to the system board.
- 6 Align the screw holes on the display-cable bracket with the screw holes on the system board.
- 7 Replace the screws that secure the display-cable bracket to system board.
- 8 Adhere the tapes that secure the speaker cable to the system board.
- 9 Adhere the tape over the display-cable bracket.

Post-requisites

- 1 Replace the [heat sink](#).
- 2 Replace the [solid-state drive](#).
- 3 Replace the [wireless card](#).
- 4 Replace the [battery](#).
- 5 Replace the [base cover](#).

Entering the Service Tag in the BIOS setup program

- 1 Turn on or restart your computer.
- 2 Press F2 when the Dell logo is displayed to enter the BIOS setup program.
- 3 Navigate to the **Main** tab and enter the Service Tag in the **Service Tag Input** field.

Removing the power-adapter port

 **WARNING:** Before working inside your computer, read the safety information that shipped with your computer and follow the steps in [Before working inside your computer](#). After working inside your computer, follow the instructions in [After working inside your computer](#). For more safety best practices, see the Regulatory Compliance home page at www.dell.com/regulatory_compliance.

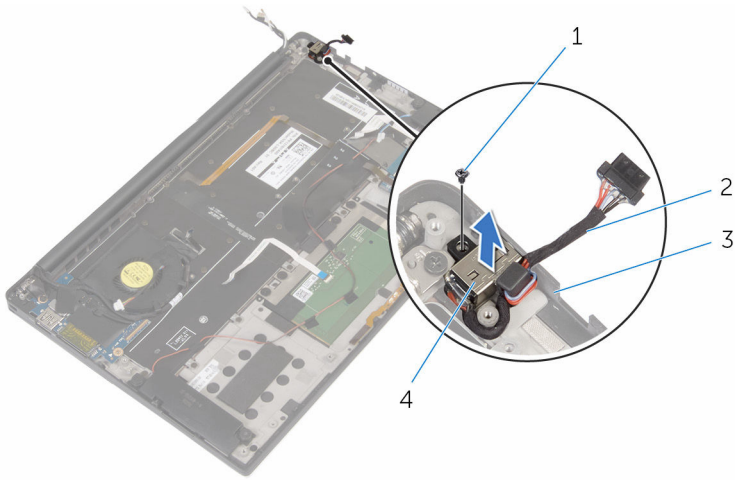
Prerequisites

- 1 Remove the [base cover](#).
- 2 Remove the [battery](#).
- 3 Remove the [wireless card](#).
- 4 Remove the [system board](#).

Procedure

- 1 Remove the screw that secures the power-adapter port to the palm-rest assembly.
- 2 Note the power-adapter port cable routing and remove the cable from the routing guide on the palm-rest assembly.

3 Lift the power-adapter port off the palm-rest assembly.



1 M2x3 screw (1)

3 palm-rest assembly

2 power-adapter port cable

4 power-adapter port

Replacing the power-adapter port

 **WARNING:** Before working inside your computer, read the safety information that shipped with your computer and follow the steps in [Before working inside your computer](#). After working inside your computer, follow the instructions in [After working inside your computer](#). For more safety best practices, see the Regulatory Compliance home page at www.dell.com/regulatory_compliance.

Procedure

- 1 Align the screw hole on the power-adapter port with the screw hole on the palm-rest assembly.
- 2 Replace the screw that secures the power-adapter port to the palm-rest assembly.
- 3 Route the power-adapter port cable through the routing guide on the palm-rest assembly.

Post-requisites

- 1 Replace the [system board](#).
- 2 Replace the [wireless card](#).
- 3 Replace the [battery](#).
- 4 Replace the [base cover](#).

Removing the fan



WARNING: Before working inside your computer, read the safety information that shipped with your computer and follow the steps in [Before working inside your computer](#). After working inside your computer, follow the instructions in [After working inside your computer](#). For more safety best practices, see the Regulatory Compliance home page at www.dell.com/regulatory_compliance.

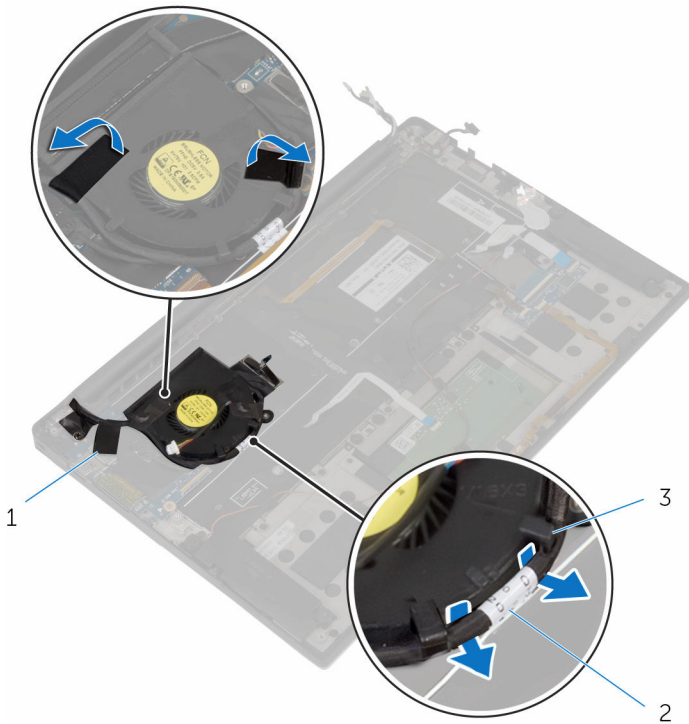
Prerequisites

- 1 Remove the [base cover](#).
- 2 Remove the [battery](#).
- 3 Remove the [wireless card](#).
- 4 Remove the [system board](#).

Procedure

- 1 Peel off the tape that secures the display cable to the fan.

- 2 Note the display-cable routing and remove the cable from the routing guides on the fan.



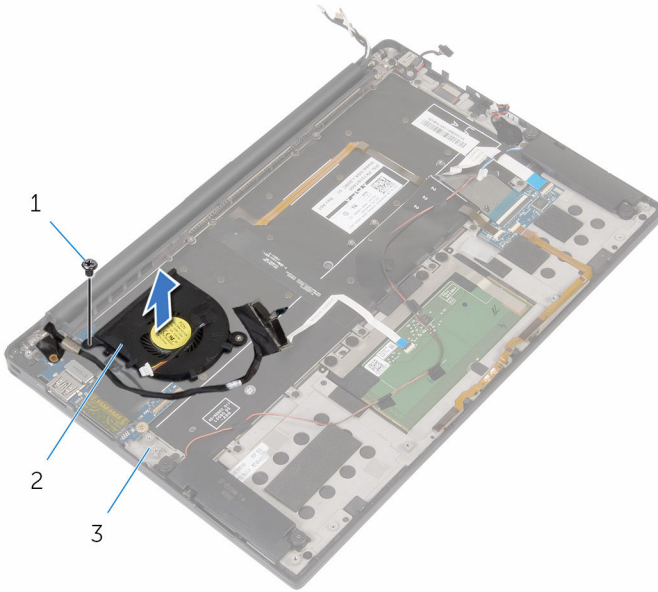
1 tape (3)

3 routing guides (2)

2 display cable

- 3 Remove the screw that secures the fan to the palm-rest assembly.

4 Lift the fan, along with its cable, off the palm-rest assembly.



1 M1.6x3 screw (1)

2 fan

3 palm-rest assembly

Replacing the fan



WARNING: Before working inside your computer, read the safety information that shipped with your computer and follow the steps in [Before working inside your computer](#). After working inside your computer, follow the instructions in [After working inside your computer](#). For more safety best practices, see the Regulatory Compliance home page at www.dell.com/regulatory_compliance.

Procedure

- 1 Align the screw holes on the fan with the screw holes on the palm-rest assembly.
- 2 Replace the screw that secures the fan to the palm-rest assembly.
- 3 Route the display cable through the routing guides on the fan.
- 4 Adhere the tape that secures the display cable to the fan.

Post-requisites

- 1 Replace the [system board](#).
- 2 Replace the [wireless card](#).
- 3 Replace the [battery](#).
- 4 Replace the [base cover](#).

Removing the keyboard



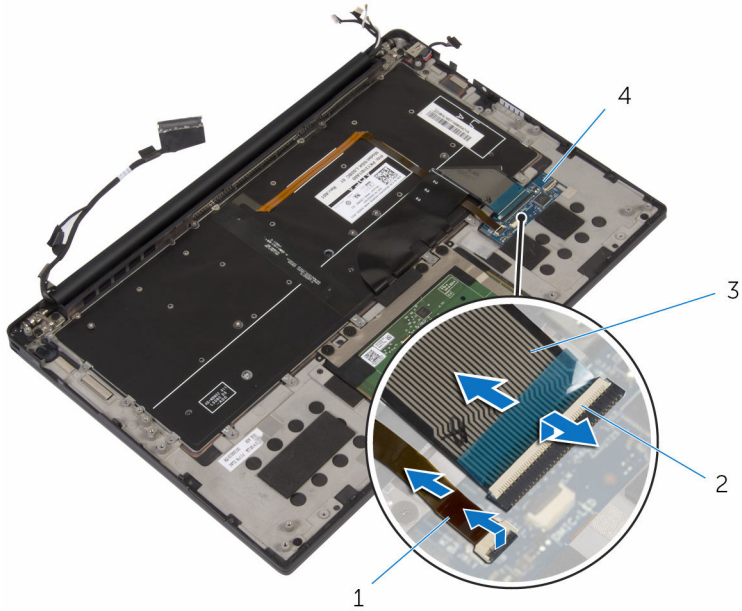
WARNING: Before working inside your computer, read the safety information that shipped with your computer and follow the steps in [Before working inside your computer](#). After working inside your computer, follow the instructions in [After working inside your computer](#). For more safety best practices, see the Regulatory Compliance home page at www.dell.com/regulatory_compliance.

Prerequisites

- 1 Remove the [base cover](#).
- 2 Remove the [battery](#).
- 3 Remove the [wireless card](#).
- 4 Remove the [speakers](#).
- 5 Remove the [coin-cell battery](#).
- 6 Remove the [heat sink](#).
- 7 Remove the [I/O board](#).
- 8 Remove the [system board](#).
- 9 Remove the [fan](#).
- 10 Remove the [I/O-board cable](#).

Procedure

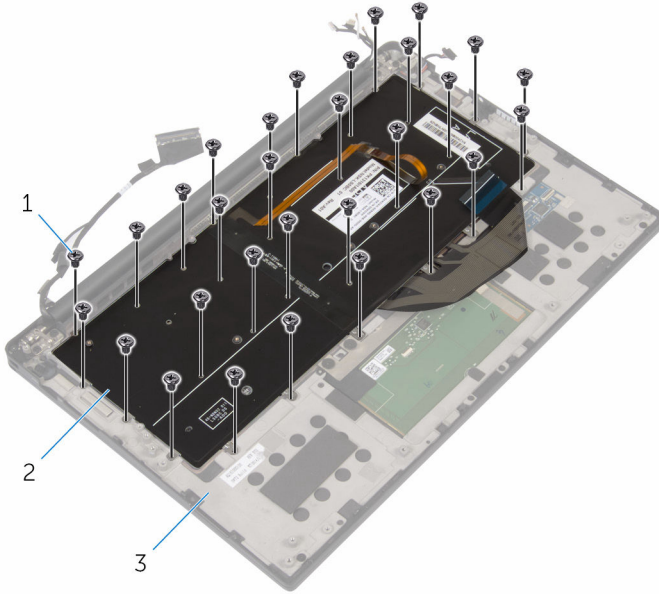
- 1 Open the latches and disconnect the keyboard cable and the keyboard-backlight cable from the keyboard-controls board.



- | | | | |
|---|--------------------------|---|-------------------------|
| 1 | keyboard-backlight cable | 2 | latches (2) |
| 3 | keyboard cable | 4 | keyboard-controls board |

- 2 Note the routing of the touch-pad cable, the I/O-board cable, and the keyboard-controls board cable, and peel off the cables from the keyboard.

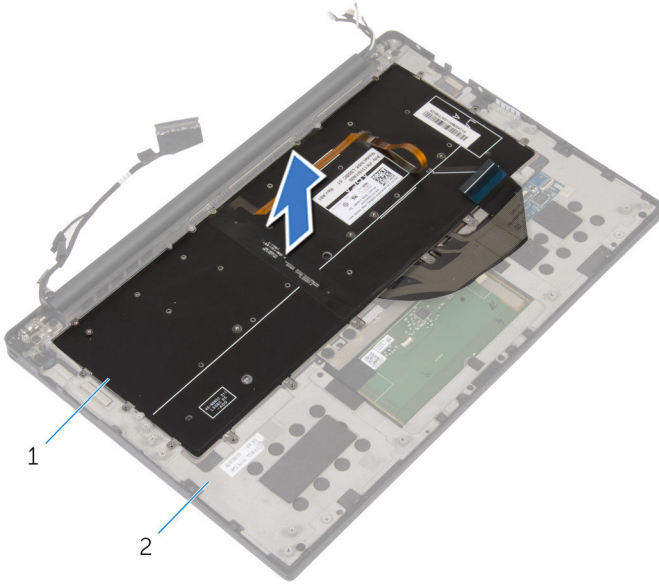
3 Remove the screws that secure the keyboard to the palm-rest assembly.



- 1 M1.6x1.5 screws (30)
- 3 palm-rest assembly

2 keyboard

4 Lift the keyboard off the palm-rest assembly.



1 keyboard

2 palm-rest assembly

Replacing the keyboard



WARNING: Before working inside your computer, read the safety information that shipped with your computer and follow the steps in [Before working inside your computer](#). After working inside your computer, follow the instructions in [After working inside your computer](#). For more safety best practices, see the Regulatory Compliance home page at www.dell.com/regulatory_compliance.

Procedure

- 1 Align the screw holes on the keyboard with the screw holes on the palm-rest assembly.
- 2 Replace the screws that secure the keyboard to the palm-rest assembly.
- 3 Adhere the touch-pad cable, the I/O-board cable, and the keyboard-controls board cable to the keyboard.
- 4 Slide the keyboard cable and the keyboard-backlight cable into the keyboard-controls board and close the latches to secure the cables.

Post-requisites

- 1 Replace the [I/O-board cable](#).
- 2 Replace the [fan](#).
- 3 Follow the procedure from step 1 to step 8 in “Replacing the [System Board](#)”.
- 4 Replace the [I/O board](#).
- 5 Replace the [heat sink](#).
- 6 Replace the [coin-cell battery](#).
- 7 Replace the [speakers](#).
- 8 Replace the [wireless card](#).
- 9 Replace the [battery](#).
- 10 Replace the [base cover](#).

Removing the palm-rest assembly



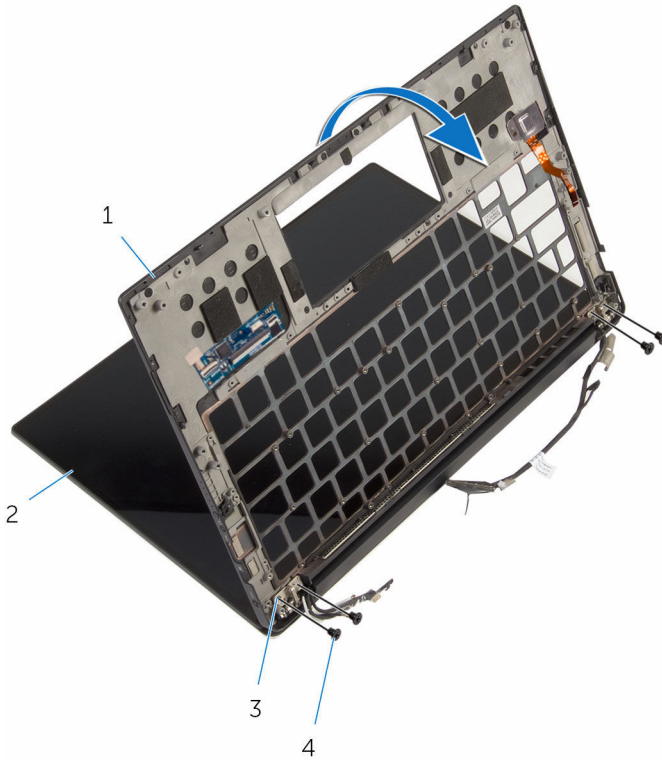
WARNING: Before working inside your computer, read the safety information that shipped with your computer and follow the steps in [Before working inside your computer](#). After working inside your computer, follow the instructions in [After working inside your computer](#). For more safety best practices, see the Regulatory Compliance home page at www.dell.com/regulatory_compliance.

Prerequisites

- 1 Remove the [base cover](#).
- 2 Remove the [battery](#).
- 3 Remove the [battery-status light cable](#)
- 4 Remove the [wireless card](#).
- 5 Remove the [heat sink](#).
- 6 Remove the [I/O board](#).
- 7 Remove the [speakers](#).
- 8 Remove the [coin-cell battery](#).
- 9 Remove the [touch pad](#).
- 10 Remove the [system board](#).
- 11 Remove the [fan](#).
- 12 Remove the [I/O-board cable](#).
- 13 Remove the [keyboard](#).

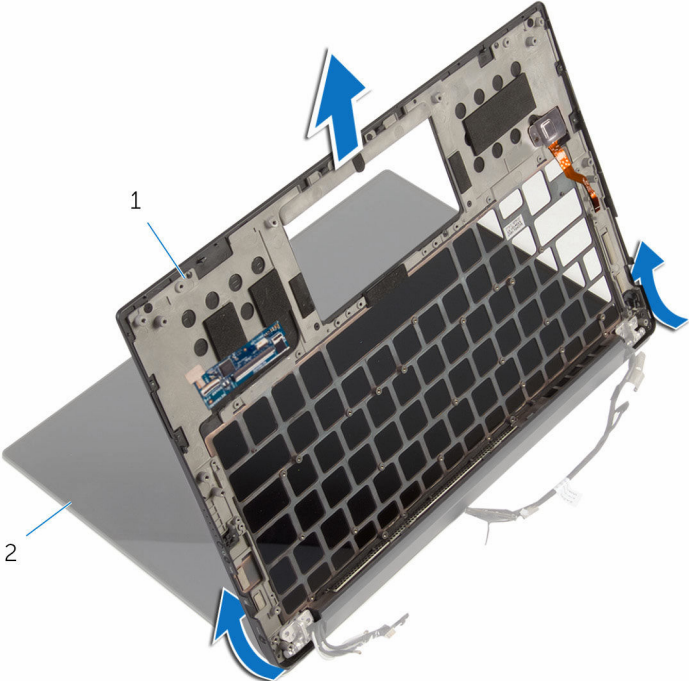
Procedure

- 1 Open the palm rest and then remove the screws that secure the palm rest to the display hinges.



- | | | | |
|---|--------------------|---|-------------------|
| 1 | palm rest | 2 | display assembly |
| 3 | display hinges (2) | 4 | M2.5x6 screws (4) |


2 Slide and remove the palm rest from the display hinges.



1 palm rest

2 display assembly

Replacing the palm-rest assembly

 **WARNING:** Before working inside your computer, read the safety information that shipped with your computer and follow the steps in [Before working inside your computer](#). After working inside your computer, follow the instructions in [After working inside your computer](#). For more safety best practices, see the Regulatory Compliance home page at www.dell.com/regulatory_compliance.

Procedure

- 1 Slide the palm rest under the display hinges and align the screw holes on the palm rest with the screw holes on the display hinges.
- 2 Replace the screws that secure the palm rest to the display hinges.
- 3 Close the palm rest.

Post-requisites

- 1 Replace the [keyboard](#).
- 2 Replace the [I/O-board cable](#).
- 3 Replace the [fan](#).
- 4 Replace the [system board](#).
- 5 Replace the [touch pad](#).
- 6 Replace the [coin-cell battery](#).
- 7 Replace the [speakers](#).
- 8 Replace the [I/O board](#).
- 9 Replace the [heat sink](#).
- 10 Replace the [wireless card](#).
- 11 Replace the [battery-status light cable](#).
- 12 Replace the [battery](#).
- 13 Replace the [base cover](#).

Flashing the BIOS

You may need to flash (update) the BIOS when an update is available or when you replace the system board. To flash the BIOS:

- 1 Turn on your computer.
- 2 Go to www.dell.com/support.
- 3 Click **Product support**, enter the Service Tag of your computer, and then click **Submit**.



NOTE: If you do not have the Service Tag, use the auto-detect feature or manually browse for your computer model.

- 4 Click **Drivers & downloads** → **Find it myself**.
- 5 Select the operating system installed on your computer.
- 6 Scroll down the page and expand **BIOS**.
- 7 Click **Download** to download the latest version of the BIOS for your computer.
- 8 After the download is complete, navigate to the folder where you saved the BIOS update file.
- 9 Double-click the BIOS update file icon and follow the instructions on the screen.

Diagnostics

The computer POST (Power On Self Test) ensures that it meets the basic computer requirements and the hardware is working appropriately before the boot process begins. If the computer passes the POST, the computer continues to start in a normal mode. However, if the computer fails the POST, the computer emits a series of LED codes during the start-up. The system LED is integrated on the Power button.

The following table shows different light patterns and what they indicate.

Light pattern	Problem description
2,1	CPU failure
2,2	System board: BIOS and ROM failure
2,3	No memory or RAM detected
2,4	Memory or RAM failure
2,5	Invalid memory installed
2,6	System board or chipset error
2,7	LCD failure
3,1	CMOS battery failure
3,2	PCI or video card or chip failure
3,3	Recovery image not found
3,4	Recovery image found but invalid

Getting help and contacting Dell

Self-help resources

You can get information and help on Dell products and services using these self-help resources:

Information about Dell products and services www.dell.com

Dell Help & Support app



Get started app



Accessing help

In Windows search, type **Help and Support**, and press Enter.

Online help for operating system

www.dell.com/support/windows
www.dell.com/support/linux

Troubleshooting information, user manuals, setup instructions, product specifications, technical help blogs, drivers, software updates, and so on.


www.dell.com/support

Learn about your operating system, setting up and using your computer, data backup, diagnostics, and so on.

See *Me and My Dell* at www.dell.com/support/manuals.

Contacting Dell

To contact Dell for sales, technical support, or customer service issues, see www.dell.com/contactdell.

 **NOTE:** Availability varies by country and product, and some services may not be available in your country.



NOTE: If you do not have an active internet connection, you can find contact information on your purchase invoice, packing slip, bill, or Dell product catalog.