

# Laptop USB Console Adapter

---

USER MANUAL

**CV211**

## EMC Information

**FEDERAL COMMUNICATIONS COMMISSION INTERFERENCE STATEMENT:** This equipment has been tested and found to comply with the limits for a Class A digital device, pursuant to Part 15 of the FCC Rules. These limits are designed to provide reasonable protection against harmful interference when the equipment is operated in a commercial environment. This equipment generates, uses, and can radiate radio frequency energy and, if not installed and used in accordance with the instruction manual, may cause harmful interference to radio communications. Operation of this equipment in a residential area is likely to cause harmful interference in which case the user will be required to correct the interference at his own expense.

The device complies with Part 15 of the FCC Rules. Operation is subject to the following two conditions: (1) this device may not cause harmful interference, and (2) this device must accept any interference received, including interference that may cause undesired operation.

**FCC Caution:** Any changes or modifications not expressly approved by the party responsible for compliance could void the user's authority to operate this equipment.

**Warning:** Warning: This equipment is compliant with Class A of CISPR 32. In a residential environment this equipment may cause radio interference.

### KCC Statement

유선 제품용 / A 급 기기 ( 업무용 방송 통신 기기 )

이 기기는 업무용 ( A 급 ) 전자파적합기기로서 판매자 또는 사용자는 이점을 주의하시기 바라며, 가정 외의 지역에서 사용하는 것을 목적으로 합니다.

### RoHS

This product is RoHS compliant.



# CV211 User Manual

## Online Registration

You can register your product at our online support center:

International	<a href="http://eservice.aten.com">http://eservice.aten.com</a>
---------------	---

## Online Support

### International

Email Support		<a href="mailto:support@aten.com">support@aten.com</a>
Online Support	Technical Support	<a href="http://eservice.aten.com">http://eservice.aten.com</a>
	Product Information	<a href="http://www.aten.com">http://www.aten.com</a>
Telephone Support		886-2-8692-6959

## Telephone Support

International	886-2-8692-6959
China	86-400-810-0-810
Japan	81-3-5615-5811
Korea	82-2-467-6789
North America	1-888-999-ATEN ext 4988 1-949-428-1111

# Package Contents

The CV211 Laptop USB Console Adapter package contains the following items:

- ◆ 1 CV211 Laptop USB Console Adapter
- ◆ 1 USB Type A to USB Mini-B Cable
- ◆ 1 User Instructions\*

Check to make sure that all the components are present and that nothing got damaged in shipping. If you encounter a problem, contact your dealer.

Read this manual thoroughly and follow the installation and operation procedures carefully to prevent any damage to the unit, and/or any of the devices connected to it.

---

\* Features may have been added to the CV211 since this manual was printed. Please visit our website to download the most up-to-date version of the manual.

---

Copyright © 2017 ATEN® International Co., Ltd.

Manual Date: 2019-01-07

ATEN and the ATEN logo are trademarks of ATEN International Co., Ltd. All rights reserved. All other trademarks are the property of their respective owners.

## Overview

The CV211 Laptop USB Console Adapter provides a direct Laptop-to-Computer connection with instant desktop access. Through its USB 2.0 and VGA cables, the CV211 gives a laptop direct access\*, bi-directional file transfers, video recording and screenshots on the connected computer. Simply connect the cables between a laptop and computer for fast and easy remote desktop access with no software to install.

In addition to offering simple plug-and-play desktop KVM (keyboard, video, mouse) access to servers, the CV211 also allows you to transfer files between the two computers using an innovative virtual media function through our intuitive graphical user interface (GUI).

The intuitive GUI console application can be run from the CV211 or copied to and run on the laptop to provide access to the target computer. The console window can be adjusted to fit the size and resolution of the target computer's desktop by resizing the pane automatically. This allows you to view the entire desktop of a the target computer without needing to use a scroll bar. The CV211 provides IT professionals with an effective hardware-based access tool that offers direct Laptop-to-Computer desktop control at any target computer's location.

---

**Note:** The CV211 offers plug-and-play console functionality that gives you complete control of the connected computer from a laptop.

---

## System Requirements

- ◆ A laptop with a USB Type A port.
- ◆ A computer with a USB Type A and VGA port.

- 
- Note:** 1. The CV211 only controls the target computer through a direct cable connection. It cannot be used to control two standalone PCs, as it only provides one computer with desktop access, as a one-to-one direct KVM console.
2. The user must know the login credentials of the target computer being accessed if this is a system requirement.
- 

## Operating Systems

Supported operating systems for laptop consoles:

- ◆ Windows, Linux, Mac

---

**Note:** No operating system limitations on servers/computers connected to the CV211.

---

## Features

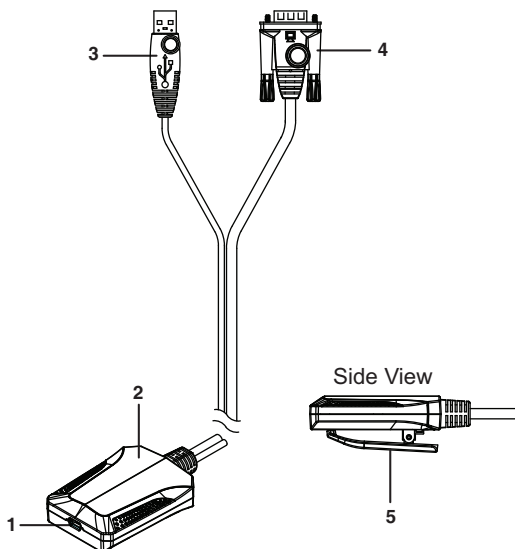
- ◆ USB Console Adapter provides direct Laptop-to-Computer desktop access
- ◆ Bi-directional file transfers between the laptop and connected computer
- ◆ Supports analogue video resolutions up to 1920 x 1200 @ 60 Hz
- ◆ Virtual media enables file applications, OS patching, software installation and diagnostic testing
- ◆ Video recording and image capture of remote desktop
- ◆ Mouse DynaSync™ – automatically synchronizes the laptop and connected computer's mouse movements
- ◆ On-screen keyboard with multi-language support
- ◆ Supports macros for user defined hotkeys
- ◆ Supported laptop console OS: Windows, Linux, and Mac\*
- ◆ No operating system limitations on servers/computers connected to the CV211
- ◆ Desktop scaling – user can adjust the size/resolution of the remote desktop window by size or ratio
- ◆ Supports hot-plugging
- ◆ Plug-and-Play – no software to install
- ◆ Upgradeable Firmware

---

**Note:** Mac laptops are supported by CV211 firmware v1.0.076 or higher.

---

# Components



No.	Component	Description
1	Mini USB Port	This connects the CV211 to the USB port on the laptop.
2	Connection LED	Lights solid blue when the USB connection is established with the laptop and connected computer. Flashes blue when the laptop is accessing the connected computer through a remote client session.
3	USB Type A Connector	Connects to the target computer to provide keyboard, mouse and virtual media access.
4	VGA Connector	Connects to the VGA port of the target computer to provide the video signals.



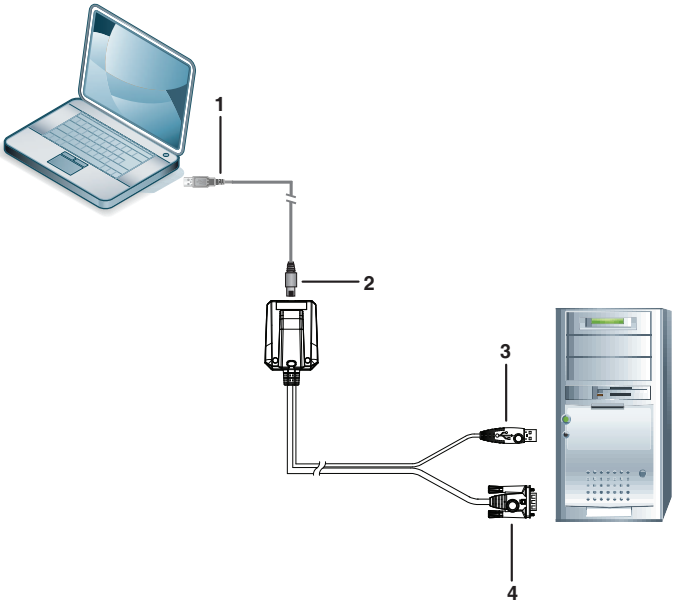
<b>No.</b>	<b>Component</b>	<b>Description</b>
5	Cable Clip	Use this clip to secure the USB and VGA cables to avoid unnecessary tension.

## Installation

Setting up the CV211 is quick and easy with plug-and-play functionality in just a few steps. Numbers 1–4 below refer to the diagram on the next page:

1. Connect the **USB Type A** end of the USB Type A to USB Mini-B Cable (included with this package) to the USB port of the laptop.
2. Connect the **USB Mini-B** end of the USB Type A to USB Mini-B Cable (included with this package) to the Mini USB port of the CV211.
3. Connect the CV211's USB Type A connector to a USB port on the target computer.
4. Connect the CV211's VGA connector to a VGA port on the target computer.
5. When a successful connection between the target computer and the laptop is established, the CV211's blue LED will flash on/off at a fast pace.

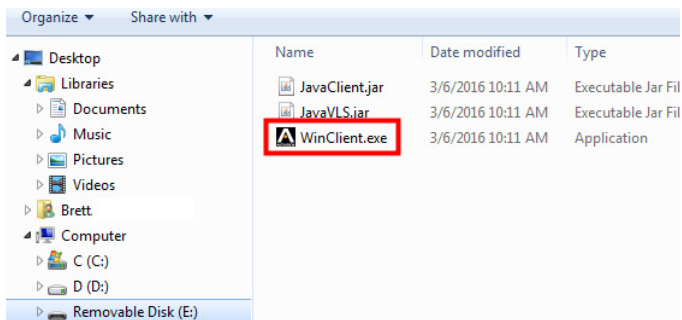
# Installation Diagram



# Operation

To establish a remote session from a laptop, do the following:

1. Connect the hardware.
2. On the laptop, a USB device will install as a Removable Disk.
3. Open an explorer window, click on the Removable Disk, and then double-click: **WinClient.exe**.\*



- 
- Note:**
1. If the Removable Disk doesn't install check the laptop's USB connection to the CV211.
  2. If the computer isn't running Windows, the Java AP Client provides remote access. To connect via the **Java AP Client**, double-click the JavaClient.jar file on the Removable Disk.
  3. The WinClient.exe and JavaClient.jar can be copied from the removable disk to the laptop where it can be executed locally.
  4. The Vplayer.jar program is used to play the videos which are captured by the CV211.

- 
4. The WinClient will search for the computer\* and then open a remote session once a connection is established.

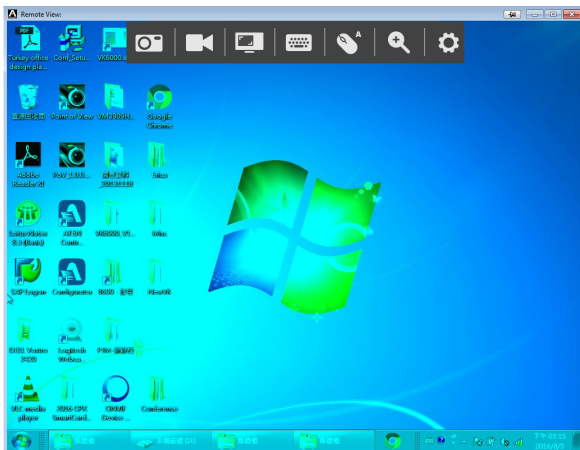
---

**Note:** If the Client AP cannot connect to the computer, check the cable connections and click **Enumerate**.

---

# Desktop View

The WinClient AP provides a Desktop View window with Control Panel to access the computer, as shown below:



The WinClient Control Panel is hidden at the upper center of the screen, and becomes visible when you mouseover it. The panel consists of seven icons, as described on the next page.

- ◆ As the mouse pointer moves over the icons in the panel, menus appear with options. If a menu does not appear, the icon can be clicked directly to use that function.
- ◆ To move the Control Panel to a different location on the top of the window, place the mouse pointer over the bar, then click and drag it to a new location.

## Control Panel

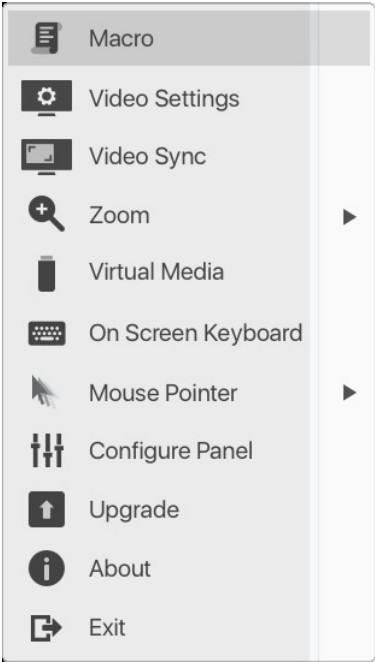


#	Icon	Description
1	Capture	Click to take a snapshot (screen capture) of the target computer's display (see page 38).
2	Record	Click to record a video of the target computer's display. The video is saved on the laptop's desktop. You can change the save to path in the Configure Panel (see page 38). To play video files, see <i>VSR Viewer</i> , page 42.
3	Video Sync	Click Video Sync to have the vertical and horizontal offset values of the connected computer's screen detected and automatically synchronized with the laptop's screen.
4	On-Screen Keyboard	Click to open the on-screen keyboard (see page 33).
5	Settings (Mouse)	Click to toggle between Automatic or Manual mouse sync modes (see page 36). <ul style="list-style-type: none"><li>◆ When the selection is Automatic, an <b>A</b> appears on the icon.</li><li>◆ When the selection is Manual, an <b>M</b> appears on the icon.</li></ul>
6	Zoom	Click to zoom the remote display window. Options are 25%, 50%, 75%, 100%, 1:1, and Full Screen (see page 28).
7	Settings (Control Panel)	Click to open an extended menu-style version of the Control Panel, as described on the next page.

# Control Panel Settings














When you click the last icon on the far right, it brings up a menu-style version of the Control Panel that allows you to select additional options, as shown below:



# WinClient Control Panel Functions

The Control Panel functions are described in the table below.

Icon	Function
	Click to bring up the Hotkeys & Macros dialog box (see <i>Hotkeys &amp; Macros</i> , page 17).
	Click to bring up the Video Options dialog box. (see <i>Video Settings</i> , page 25).
	Click to perform a video auto-sync operation. It is the same as clicking the Auto-sync button in the <i>Video Options</i> dialog box (see <i>Video Settings</i> , page 25).
	Click to zoom the remote display window (see <i>Zoom</i> , page 28). <b>Note:</b> This feature is only available in windowed mode, when Full Screen Mode is off.
	Click to bring up the <i>Virtual Media</i> dialog box (see <i>Virtual Media</i> , page 29).
	Click to bring up the on-screen keyboard (see <i>On-Screen Keyboard</i> , page 33).
	Click to select the mouse pointer type. <b>Note:</b> This icon changes depending on which mouse pointer type is selected (see <i>Mouse Pointer</i> , page 35).
	Click to bring up the Configure Panel dialog box (see <i>Configure Panel</i> , page 38).
	Click to bring up the firmware upgrade dialog box (see <i>Upgrade</i> , page 40).
	Provides copyright and firmware version information.
	Click to exit the viewer. Exiting from a WinClient AP or Java Client AP session closes the remote desktop window.





## Hotkeys & Macros

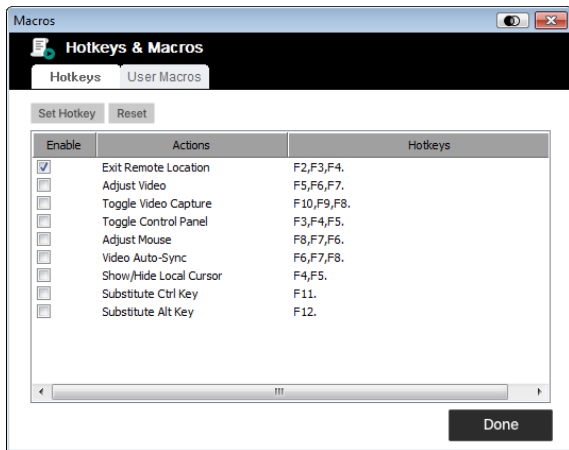
The Macros icon provides access to two tabs found in the Hotkeys & Macros dialog box: Hotkeys and User Macros. Each function is described in the sections

below.

### Hotkeys

Various actions related to manipulating the connected computer can be accomplished with hotkeys. The *Hotkeys* tab lets you configure which hotkeys perform the actions.

The hotkeys that invoke an action are shown to the right of its name. Use the checkbox to the left of an action's name to enable or disable its hotkey.



To change the hotkey for an action, do the following:

1. Highlight the *hotkey*, then click **Set Hotkey**.
2. Press your selected Function keys (one at a time). The key names appear in the *Edit Hotkey* field as you press them.
  - ◆ You can use the same function keys for more than one action, as long as the key sequence is not the same.

- ◆ To cancel setting a hotkey value, click **Cancel**; to clear an action's Hotkeys field, click **Clear**.

3. When you have finished keying in your sequence, click **Save**.

To reset all the hotkeys to their default values, click **Reset**.

An explanation of the Hotkey actions is given in the table below:

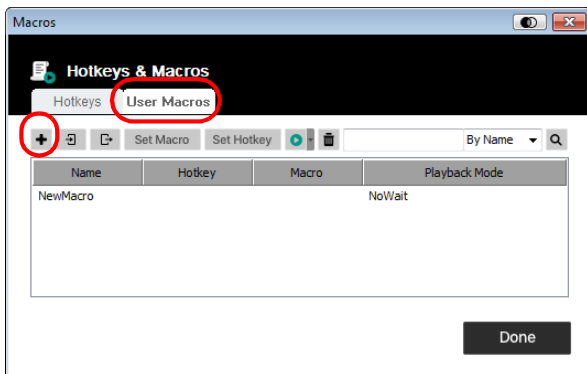
Action	Explanation
Exit Remote Location	Breaks the connection to the CV211 and returns you to local client computer operation. This is equivalent to clicking the <i>Exit</i> icon on the Control Panel. The default keys are F2, F3, F4.
Adjust Video	Brings up the <i>Video Settings</i> dialog box. This is equivalent to clicking the <i>Video Settings</i> icon on the Control Panel. The default keys are F5, F6, F7.
Toggle Video Capture	Toggles the Video Capture feature to start and stop recording a video of the remote display. The default keys are F10, F9, F8.
Toggle Control Panel	Toggles the Control Panel Off and On. The default keys are F3, F4, F5.
Adjust Mouse	This synchronizes the laptop and connected computer's mouse movements. The default keys are F8, F7, F6.
Video Auto-sync	This combination performs an auto-sync operation. It is equivalent to clicking the <i>Video Sync</i> icon on the Control Panel. The default keys are F6, F7, F8.
Show/Hide Local Cursor	Toggles off and on: hides local cursor and locks the mouse pointer and keyboard use within the Windows/Java Client AP window, plus hides the control panel. This is equivalent to selecting the <i>Single</i> pointer type from the <i>Mouse Pointer</i> icon on the Control Panel Settings menu. The default keys are F4, F5.

Substitute Ctrl Key	If your laptop captures Ctrl key combinations, preventing them from being sent to the connected computer, you can implement their effects on the connected computer by specifying a function key to substitute for the Ctrl key. If you substitute the F11n key, for example, pressing [F11 + 5] would appear to the connected computer as [Ctrl + 5]. The default key is F11.
Substitute Alt Key	Although all other keyboard input is captured and sent to the CV211, [Alt + Tab] and [Ctrl + Alt + Del] work on your laptop. In order to implement their effects on the connected computer, another key may be substituted for the Alt key. If you substitute the F12 key, for example, you would use [F12 + Tab] and [Ctrl + F12 + Del]. The default key is F12.

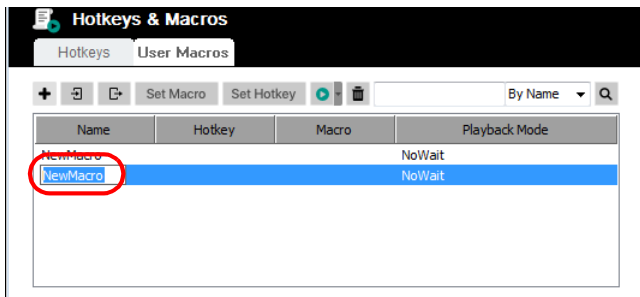
## User Macros


User Macros are created to perform specific actions on the target computer. To create the macro, do the following:

1. Select *User Macros*, then click **Add**.

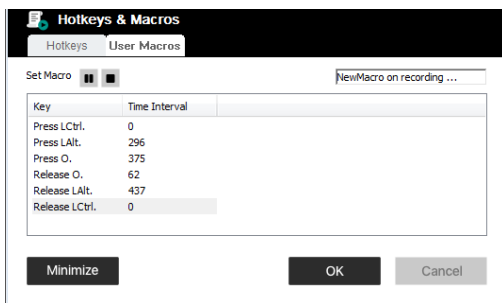


2. In the dialog box that comes up, replace the “New Macro” text with a name of your choice for the macro:



3. Click **Set Macro**, and then **Record** .

4. Press the keys for the macro.



- ◆ To pause macro recording, click **Pause**. To resume, click **Resume**.
- ◆ Click **Stop** to end recording the keys.
- ◆ When you click **Minimize**, the dialog box disappears, and a small panel appears at the top left of the screen:



- ◆ Clicking **Cancel** cancels all keystrokes.
- ◆ When you have finished, click **Stop**.

- ◆ When recording the macro the focus must be on the remote screen. It cannot be in the macro dialog box.
- ◆ Click **Show Detail** to return to the macro dialog box.

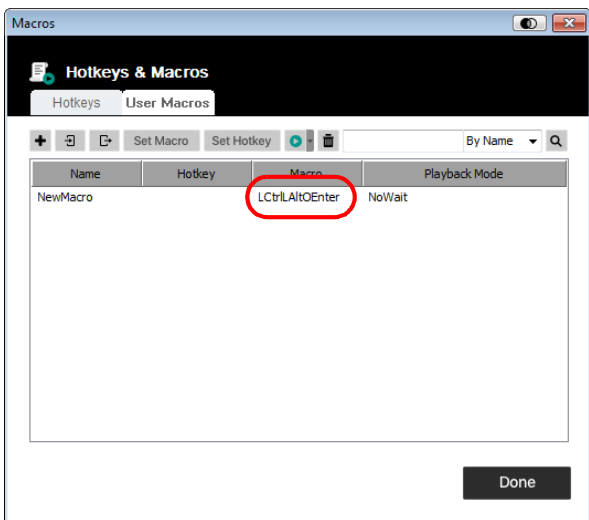
---

**Note:** 1. Case is not considered – typing **A** or **a** has the same effect.

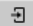

2. Only the default keyboard characters may be used. Alternate characters cannot be used. For example, if the keyboard is Traditional Chinese and default character is **A**, the alternate Chinese character obtained via keyboard switching is not recorded.

---

5. If you haven't brought up the Minimize dialog, click **OK** when you have finished recording your macro. You return to the Macros dialog box with your system macro key presses displayed in the Macro column:



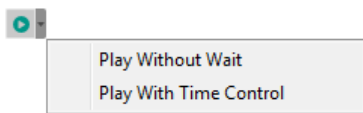
6. Select a macro and click **Set Hotkey** to create a hotkey that executes the macro.

7. If you want to change any of the keystrokes, select the macro and click **Set Macro**. This brings up a dialog box that allows you to change the content of your keystrokes, change their order, etc.
8. Repeat the procedure for any other macros you wish to create.
9. The complete Macro list can be imported and exported using   on the top panel.

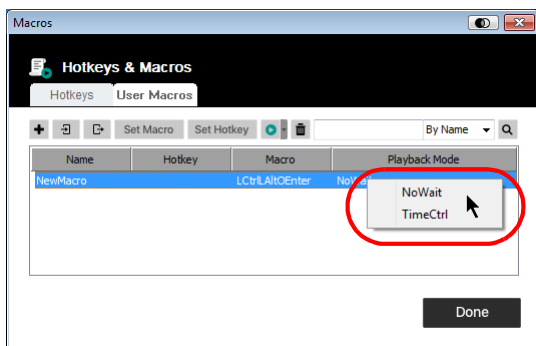
After creating your macros, you can run them in two ways:

1. By using the hotkey (if one was assigned).
2. By opening the Macros dialog box and clicking **Play**.

If you run the macro from this dialog box, you have the option of specifying how the macro runs.



- ◆ If you choose *Play Without Wait*, the macro runs the key presses one after another with no time delay between them.
- ◆ If you choose *Play With Time Control*, the macro waits for the amount of time between key presses that you took when you created it. Click on the arrow next to *Play* to make your choice.
- ◆ If you click *Play* without opening the list, the macro runs with the default choice (*NoWait* or *TimeCtrl*), which is shown in the *Playback* column.



You can change the default choice by clicking on the current choice (*NoWait* in the screenshot above), and selecting the alternate choice.

---

**Note:** 1. Information about the Search function is given below.

2. User Macros are stored on the Local Client computer. Therefore, there is no limitation on the of number of macros, the size of the macro names, or makeup of the hotkey combinations that invoke them.
- 

## **Search**

Search, at the top of the dialog box, lets you filter the list of macros that appear in the large lower panel for you to play or edit. Click the drop-down menu to choose whether you want to search by name or by key; key in a string for the search; then click **Search**. All instances that match your search string appear in the upper panel.



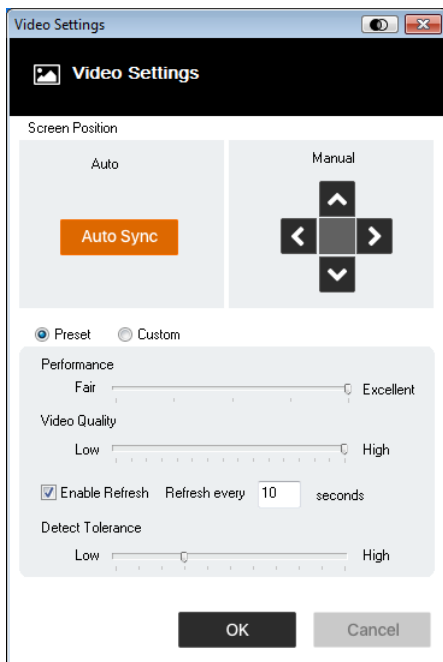


## Video Settings

Clicking the *Video Settings* icon on the Control Panel Settings menu brings up the *Video Settings* dialog box.

The options in the dialog box allow you to adjust the Screen Position, slide bar settings (Performance, Video Quality, Detect Tolerance) and Refresh settings, as shown below:

### Video Settings



Options	Usage
Manual	Adjust the horizontal and vertical position of the connected computer's window by clicking the Arrow buttons.

Options	Usage
Auto-Sync	<p>Click Auto-Sync to have the vertical and horizontal offset values of the remote screen detected and automatically synchronized with the local screen.</p> <p><b>Note:</b> 1. If the laptop and the connected computer's mouse pointers are out of sync, in most cases, performing this function will bring them back into sync.</p> <p>2. This function works best with a bright screen.</p> <p>3. If you are not satisfied with the results, use the Screen Position arrows to position the remote display manually.</p>
Performance	<p>The CV211 will use this selection to automatically adjust the <i>Video Quality</i> settings to optimize the quality of the video display or performance.</p>
Video Quality	<p>Drag the slide bar to adjust the overall Video Quality. The larger the value, the clearer the picture and the more video data is transmitted.</p>
Enable Refresh	<p>The CV211 can redraw the screen every 1 to 99 seconds, eliminating unwanted artifacts from the screen. Select <b>Enable Refresh</b> and enter a number from 1 through 99. The CV211 will redraw the screen at the interval you specify. This feature is disabled by default. Click to put a check mark in the box next to <i>Enable Refresh</i> to enable this feature.</p> <p><b>Note:</b> 1. The switch starts counting the time interval when mouse movement stops.</p> <p>2. Enabling this feature increases the volume of video data transmitted. The lower the number specified, the more often the video data is transmitted. Setting too low a value may adversely affect overall operating responsiveness.</p>

<b>Options</b>	<b>Usage</b>
Detect Tolerance	This setting also relates to video quality. It governs detecting or ignoring pixel changes. A high setting can result in a lower quality display due to less data transfer. A lower setting will result in better video quality, but setting the threshold too low may allow too much data to be transferred, negatively impacting performance.



## Zoom

The Zoom icon controls the zoom factor for the target computer's console window. Settings are as follows:

Setting	Description
25%	Sizes and displays the remote view window at 25%.
50%	Sizes and displays the remote view window at 50%.
75%	Sizes and displays the remote view window at 75%.
100%	Sizes and displays the remote view window at 100%.
1:1	Sizes and displays the target computer's desktop view window at 100%. The difference between this setting and the 100% setting is that when the target computer's window is resized its contents don't resize – they remain at the size they were. To see any objects that are outside of the viewing area move the mouse to the window edge, to have the screen scroll.
Full Screen	Sizes and displays the connected computer's window at full screen. To exit click <b>Full Screen</b> a second time.



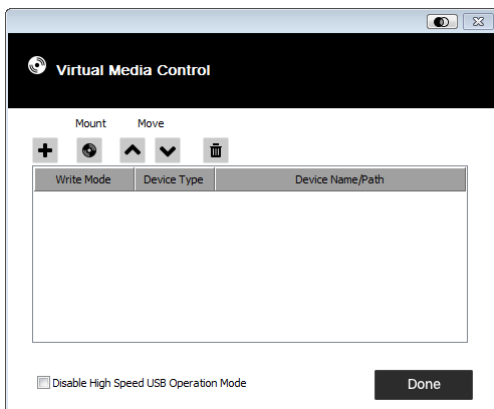
## Virtual Media

The *Virtual Media* feature found on the Control Panel Settings menu allows a drive, ISO file, folder, removable disk, or smart card reader on a user's system to appear and act as if it were installed on the target computer.


### Mounting Virtual Media

To mount a virtual media device, do the following:

1. Click the Virtual Media icon to bring up the *Virtual Media Control* dialog box:



---

**Note:** The  button at the top right brings up a slider to adjust the transparency of the dialog box. After making your adjustment, click anywhere in the dialog box to dismiss the slider.

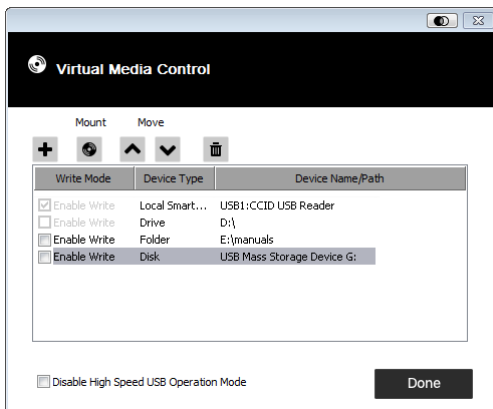
---

2. Click **+**; then select the media source.




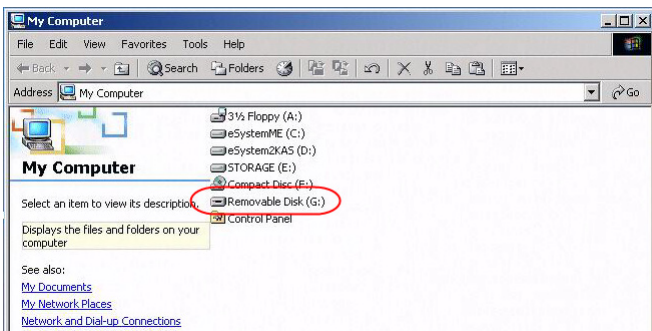
Depending on your selection, additional dialog boxes appear to enable you to select the Drive, ISO File, Folder, or Removable Disk you desire.

3. If your device only supports full speed USB, put a check in the *Disable High Speed USB Operation Mode* checkbox.
4. To add additional media sources, click **+**, and select the source as many times as you require. Up to three virtual media choices can be mounted. The top three in the list are the ones that are selected. Virtual Media and Smart Card readers can be mounted at the same time. To rearrange the selection order, highlight the device you want to move, then click the Up or Down Arrow button to promote or demote it in the list.
5. *Read* refers to the redirected device being able to send data to the target computer; *Write* refers to the redirected device being able to have data from the target computer written to it. For the redirected device to be writable as well as readable, click to put a check in the *Enable Write* checkbox:



**Note:** If a redirected device cannot be written to, it appears in gray.

6. To remove an entry from the list, select it and click .
7. After you have made your media source selections, click **Mount**. The dialog box closes. The virtual media devices that you have selected are redirected to the target computer, where they show up as drives, files, folders, etc. on the target computer's file system.



Once mounted, you can treat the virtual media as if they really existed on the target computer – drag and drop files to/from them; open files on the target computer for editing and save them to the redirected media, etc.

Files that you save to the redirected media will actually be saved on your laptops storage. Files that you drag from the redirected media will actually come from your laptops storage.

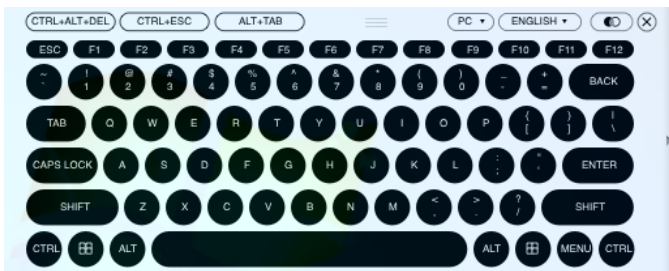
8. To end the redirection, bring up the *Control Panel* and click on the Virtual Media icon. All mounted devices are automatically unmounted.





## On-Screen Keyboard

The CV211 supports an on-screen keyboard, available in multiple languages, with all the standard keys for each supported language. Click this icon to pop up the on-screen keyboard:



One of the advantages of the on-screen keyboard is that if the keyboard languages of the target computer and laptop's aren't the same, you don't have to change the settings for either system. Just bring up the on-screen keyboard; select the language; and use the on-screen keyboard to type with.

---

**Note:** You must use your mouse to click on the keys. You cannot use your actual keyboard.

---

## Changing Languages

To change languages, do the following:

1. Click the down arrow next to the currently selected language, to drop down the language list.

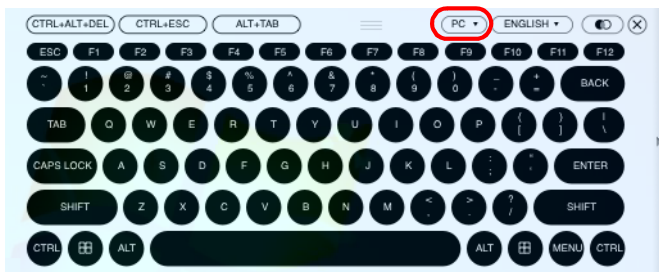


2. Select the new language from the list.

## Selecting Platforms

The On-screen Keyboard supports the Sun platform as well as the PC. To select the platform, do the following:

1. Click the down arrow next to the currently selected platform, to drop down the platform list.



2. Select the new platform from the list.

## Expanded Keyboard

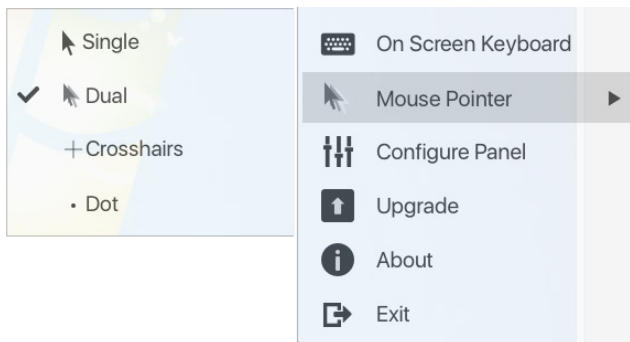
To display/hide the expanded keyboard keys, click the arrow on the right side of the keyboard.





## Mouse Pointer

The control panel offers a number of mouse pointer options when working in the target computer's display. Click this icon to select from the available choices:



- 
- Note:** 1. The Dot pointer is not available with the Java Applet Viewer or the Java Client AP.
2. Selecting the Dot pointer has the same effect as the Toggle mouse display hotkey function.
-





## Mouse Sync Mode

Synchronization of the laptop and target computer mouse pointers is accomplished either automatically or manually.

### Automatic Mouse Synchronization

*Mouse DynaSync* provides automatic locked-in syncing of the target computer and laptop mouse pointers – eliminating the need to constantly resync the two movements.

The icon on the Control Panel indicates the synchronization mode status as follows:

Icon	Function
	The <b>A</b> on this icon indicates that Mouse Dyna Sync is available and is <b>enabled</b> . This is the default setting when Mouse DynaSync is available.
	The <b>M</b> on this icon indicates that Mouse DynaSync is available but is <b>not enabled</b> .

When *Mouse DynaSync* is available, clicking the icon toggles its status between enabled and /disabled. If you choose to disable Mouse DynaSync mode, you must use the manual syncing procedures described under *Manual Mouse Synchronization*, page 37.

## Manual Mouse Synchronization

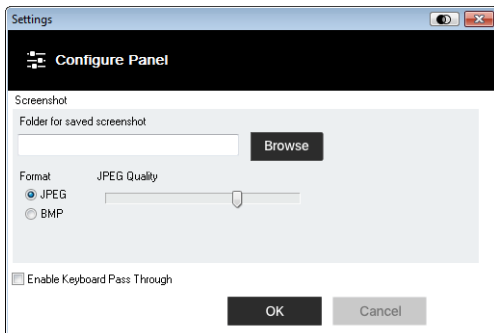
If the laptop's mouse pointer goes out of sync with the target computer's mouse pointer, there are a number of methods to bring them back into sync:

1. Perform a video and mouse auto sync by clicking the Video Sync icon on the Control Panel menu.
2. Perform an *Auto Sync* in Video Settings (see *Video Settings*, page 25).
3. Invoke the *Adjust Mouse* function with the *Adjust Mouse* hotkeys (see *Adjust Mouse*, page 18).
4. Move the pointer into all 4 corners of the screen (in any order).
5. Drag the Control Panel to a different position on the screen.



## Configure Panel

Clicking the *Configure Panel* icon from the Control Panel Settings menu brings up a dialog box that allows you to configure snapshot and keyboard pass through settings:



The organization of the dialog box is described in the table, below:

Item	Description
Screenshot	<p>These settings let the user configure the CV211's screen capture parameters for when you use the Capture icon from the Control Panel:</p> <ul style="list-style-type: none"><li>◆ Path lets you select a directory that the captured screens and video files automatically get saved to. Click <b>Browse</b>; navigate to the directory of your choice; then click <b>OK</b>. If you do not specify a directory here, the snapshot or video file is saved to your desktop.</li><li>◆ Click a radio button to choose whether you want the captured screen to be saved as a JPEG (JPG) or BMP a file.</li><li>◆ If you choose JPEG, you can select the quality of the captured file with the slider bar. The higher the quality, the better looking the image, but the larger the file size.</li></ul>

<b>Item</b>	<b>Description</b>
Keyboard Pass Through	When this is enabled, the Alt-Tab key press is passed to the target computer and affects the target computer. If it is not enabled, Alt-Tab acts on your laptop.

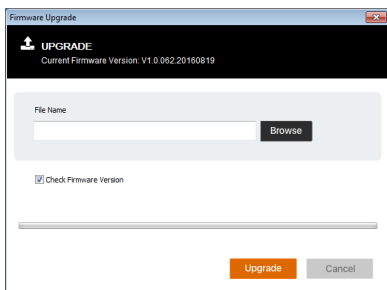


## Upgrade

The *Upgrade* icon allows you to upgrade the CV211's firmware.

To upgrade the firmware, do the following:

1. Download the new firmware file from our website:  
[www.aten.com](http://www.aten.com)
2. Run the WinClient.exe file to open the remote view window, click the Control Panel Settings icon, then select Upgrade. The Firmware Upgrade window opens:

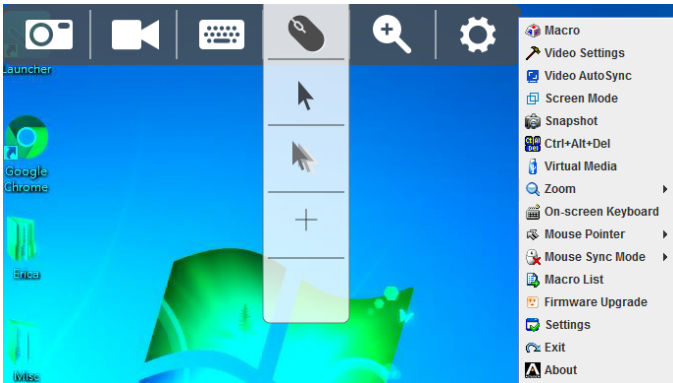


3. Click Browse; navigate to the directory that the new firmware file is in and select the file.
4. Click **Upgrade** to start the upgrade procedure.
  - ◆ If you enabled *Check Firmware Version*, the current firmware level is compared with that of the upgrade file. If the current version is equal to or higher than the upgrade version, a popup message appears, to inform you of the situation and stops the upgrade procedure.
  - ◆ If you didn't enable *Check Firmware Version*, the upgrade file is installed without checking what its level is.
  - ◆ As the upgrade proceeds, progress information is shown in the Progress bar.
  - ◆ Once the upgrade completes successfully, the CV211 resets itself.
5. Reconnect to the CV211 and check the firmware version to ensure it is the new one.



## The Java Control Panel

The Java Client Viewer and Java Client AP Control Panel is similar to the one used by the WinClient:



The major differences between them are:

- ◆ In the Macros dialog box, *Toggle Mouse Display* is not available.
- ◆ The *Dot* mouse pointer type is not available.
- ◆ In *Control Panel Settings*, the BMP Snapshot format has been replaced by PNG.

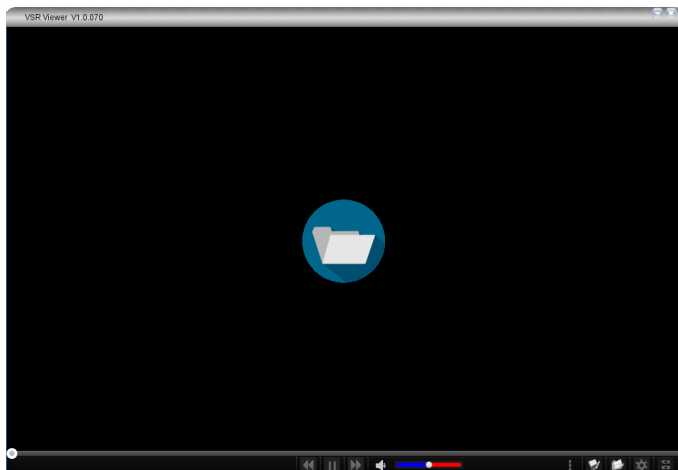



## VSR Viewer









The CV211 can record a video of the target computer's desktop display via the Video icon on the Control Panel. Clicking the Video icon starts and stops the recording. Videos are saved to the laptop's desktop and can be opened with the VSR Viewer. For security reasons, the VSR Viewer is the only application that can open these video files.

To open a video file, do the following:

1. Open an Explorer window and access the Removable Drive created for the CV211.
2. Double-click **Vplayer.jar** to launch the VSR Viewer:



Icon	Function
	The folder icon allows you to open a video file so that it can be viewed. Click on the icon to browse for saved *.vls files, then select it and click <b>Open</b> .

	Drag the round button left or right across the play-bar to bring the video to a specific time or frame. When the mouse is hovered over the play-bar, detailed time and date information is displayed.
	Use this icon to pause the video while its being played.
	Use this icon to play the video after its been paused.
	Use this icon to fast-forward the video while its being played.
	Use this icon to reverse the video while its being played.
	Use this icon to mute the audio.
	Drag the round button across the volume control bar to increase/decrease the volume.
	Clicking this icon opens the Settings Menu bar. See next row.

Click the *Settings* Menu to configure the following options:

◆ **Scale Mode:**

*Keep Video Size* – Keeps the video the same size regardless of how the window is adjusted. Parts of the desktop may not appear on the screen if the window is made too small.

*Scale Video to Window* – Resizes the video to match the size of the window frame.

*Keep Video Ratio* – Keeps the ratio of the video to window size regardless of how the frame is adjusted.

- ◆ **Caption:** Opens a window to adjust the text format for on-screen notifications. The caption feature displays text notifications when keystrokes and mouse clicks were performed on the connected computer. You can obtain detailed information about the text that was typed by opening the Control Panel (see the *Control Panel* icon on page 45).

*Caption Setting* – Clicking the small icon at the top right corner toggles the caption feature on and off.

*Font* – Select the font type and size.

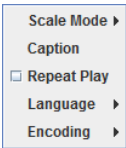
*User Key Strokes* – Select the text and outline color of the text that represents the keys that are pressed on the keyboard when the user was accessing the computer.

*User Mouse Clicks* – Select the text and outline color of the text that represents the mouse clicks that are pressed when the user was accessing the computer.

*Position* – Click a box to select where the text will appear on the screen.

*Default* – Click to revert the caption text back to the default settings.

- ◆ **Repeat Play:** Puts the video in a continuous loop, causing it to replay the video each time it ends.
- ◆ **Language:** Allows you to select the language for the VSR Viewer GUI.
- ◆ **Encoding:** Allows you to select the video encoding for different regions. The default setting is US-ASCII.





Click this icon to save the video file to a new location and/or with a new name.



Click this icon to open a new video file. The VLS Viewer can only open video files with the \*.vls extension.



Click this icon to open the *Control Panel* window. The Control Panel displays information about every key that was pressed on the keyboard as the video was recording.



Click this icon to put the VLS Viewer in *Full Screen* mode. To exit full screen mode, click the icon again.

# Specifications

Function		CV211
Computer Connections		1
Connectors	Laptop USB Console (LUC) Port	1 x Mini-USB Female (Black)
	Computer Port	1 x USB Type A Male (Black)
		1 x VGA Male (Blue)
LEDs	Online	1 (Blue)
Max Video Resolution		1920 x 1200 @ 60 Hz
Environment	Operating Temp.	0–40° C
	Storage Temp.	-20–60° C
	Humidity	0–80% RH, Non-condensing
Physical Properties	Housing	Plastic
	Weight	0.13 kg
	Dimensions (L x W x H)	7.05 x 5.37 x 3.01 cm

## Limited Warranty

ATEN warrants its hardware in the country of purchase against flaws in materials and workmanship for a Warranty Period of two [2] years (warranty period may vary in certain regions/countries) commencing on the date of original purchase. This warranty period includes the LCD panel of ATEN LCD KVM switches. Select products are warranted for an additional year (see *A+ Warranty* for further details). Cables and accessories are not covered by the Standard Warranty.

### **What is covered by the Limited Hardware Warranty**

ATEN will provide a repair service, without charge, during the Warranty Period. If a product is defective, ATEN will, at its discretion, have the option to (1) repair said product with new or repaired components, or (2) replace the entire product with an identical product or with a similar product which fulfills the same function as the defective product. Replaced products assume the warranty of the original product for the remaining period or a period of 90 days, whichever is longer. When the products or components are replaced, the replacing articles shall become customer property and the replaced articles shall become the property of ATEN.

To learn more about our warranty policies, please visit our website:

<http://www.aten.com/global/en/legal/policies/warranty-policy/>