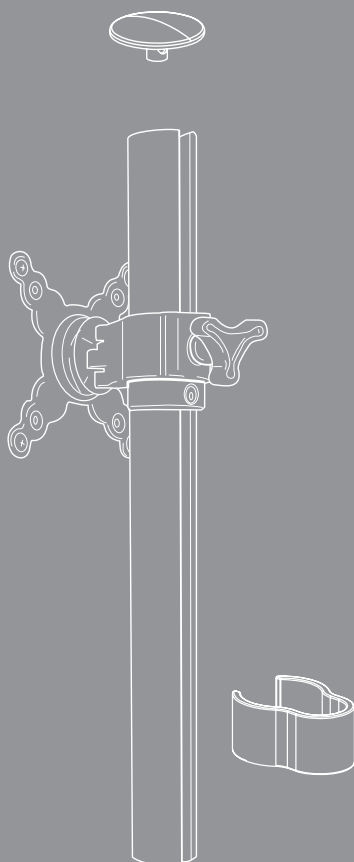


# Fellowes®

## Lotus™

single monitor arm kit



ASSEMBLY AND OPERATION INSTRUCTIONS

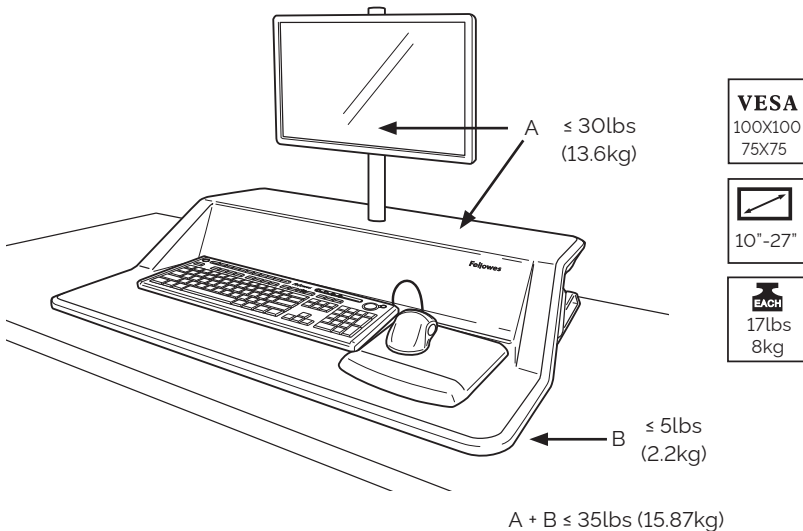
LOTUS-KIT1-SLV



## IMPORTANT SAFETY INSTRUCTIONS AND WARNINGS

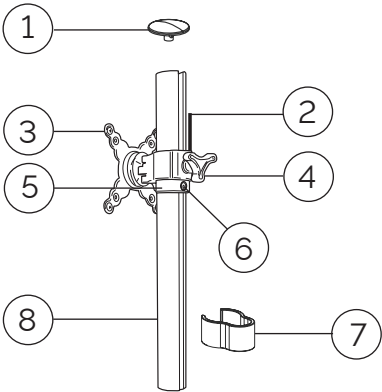
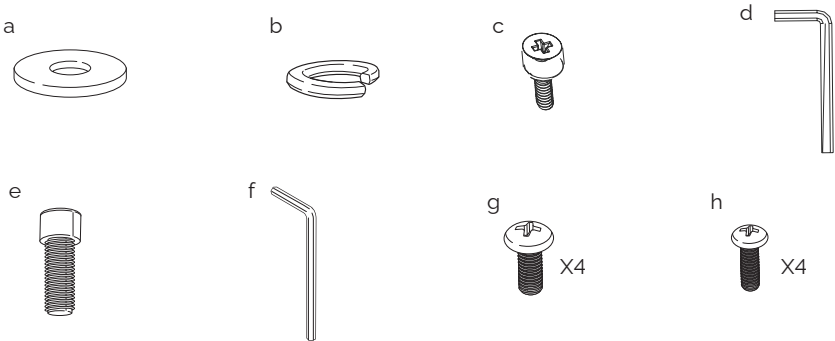
**Read before using!**

- **WARNING: PINCH POINT! KEEP HANDS CLEAR OF SUPPORT BARS DURING OPERATION. SERIOUS INJURY MAY OCCUR.**
- Only compatible with Fellowes monitor arm kit for Lotus.
- This product contains small items that could be a choking hazard if swallowed. Keep away from children.
- Never exceed the maximum load capacity of 17.6 lbs. (8 kg.).
- This product is intended for use only with the Fellowes Lotus™ Sit Stand Workstation
- Refer to the Lotus™ Sit Stand Workstation instructions manual for further tension adjustment guidance.
- With at least 10lbs (4.5kg) on the workstation, raise to the highest position. Then, remove monitors before installing the monitor arm.



**Please review** these instructions before beginning the assembly procedures. Check that all the parts shown below were provided with your order. Contact your supplier if any materials are missing. Do not discard the packaging until content that the product operates to your satisfaction.

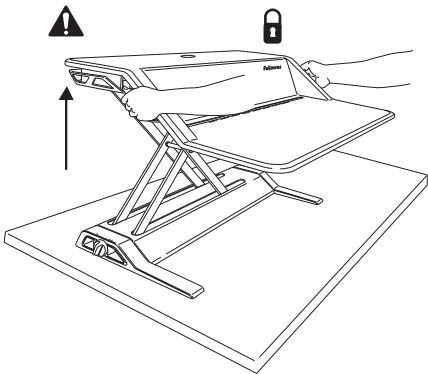
**Parts and components**



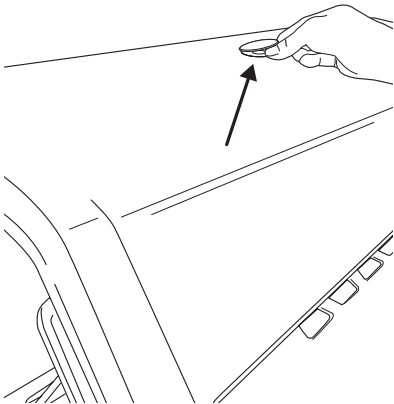
**Additional tools required**

- Phillips screwdriver

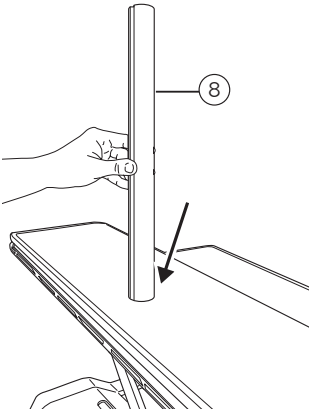
**Step 1**



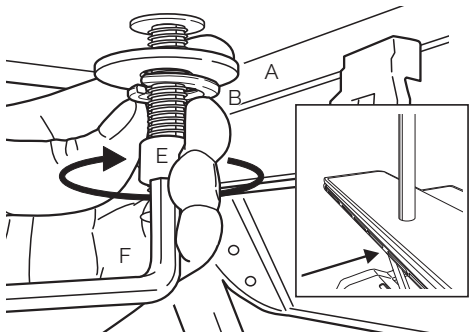
**Step 2**



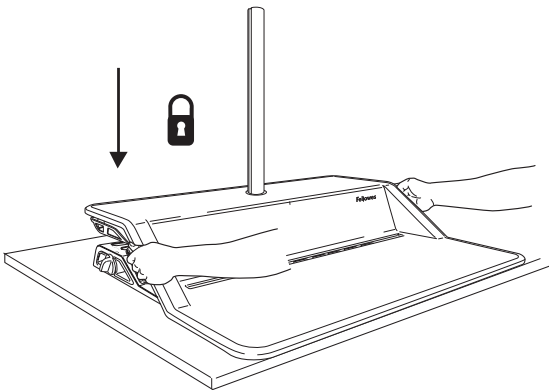
**Step 3**



**Step 4**

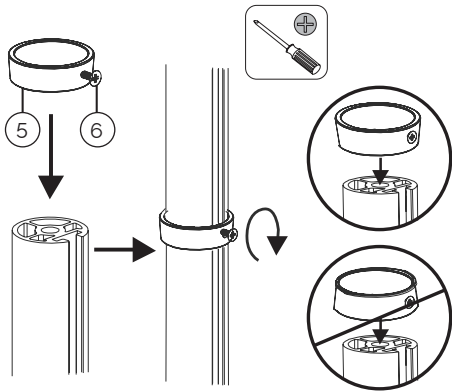


**Step 5**

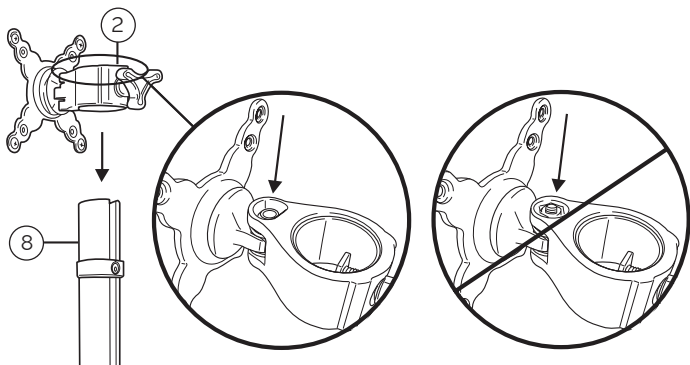


**Step 6**

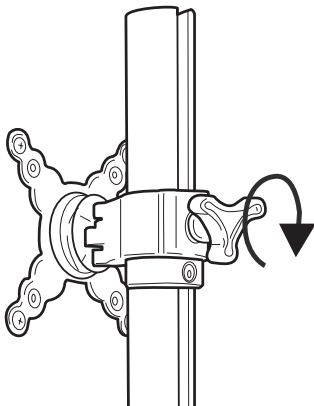
Install ring with the larger diameter downward.



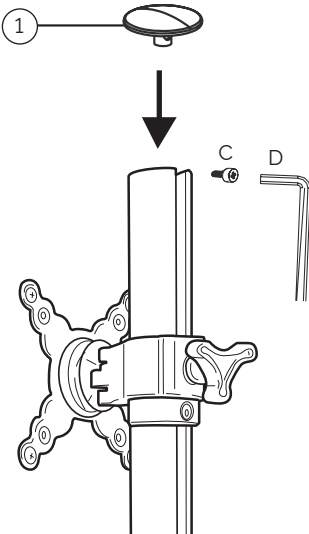
**Step 7**



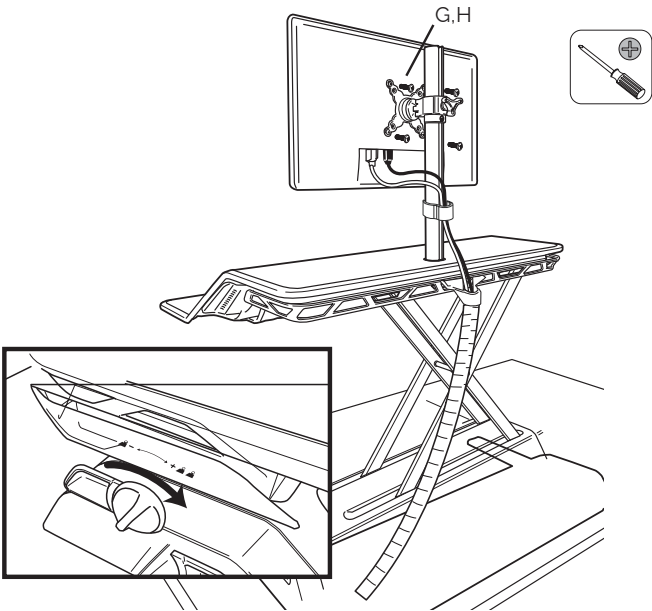
**Step 8**



**Step 9**



**Step 10**





To contact a Fellowes®  
service representative,  
call 1-800-833-3746

© 2023 Fellowes, Inc. | Part #413023

Warranty information can be found by contacting customer service, your sales representative or by visiting [www.fellowes.com](http://www.fellowes.com)