



Predator G1-710 User's Guide

© 2016. All Rights Reserved.
Desktop Computer Covers:
Tower models
This revision: April 2016 V1.01



Important

This manual contains proprietary information that is protected by copyright laws. The information contained in this manual is subject to change without notice. Images provided herein are for reference only and may contain information or features that do not apply to your computer. Acer Group shall not be liable for technical or editorial errors or omissions contained in this manual.

TABLE OF CONTENTS

Information for your safety and comfort	5	Turning off your computer.....	38
Safety instructions	5	Using a USB device.....	39
Turning the product off before cleaning	5	Connecting a USB storage device	39
Warnings.....	5	Disconnecting a USB device.....	40
Using electrical power.....	5	Using the optical disc drive	41
Product servicing	6	Playing DVD movies	41
Disposal instructions	7	4 PredatorSense	43
Tips and information for comfortable use	8	PredatorSense features.....	43
Finding your comfort zone	8	Logo LED	45
Taking care of your vision	9	V Badge LED	46
Developing good work habits.....	10	Highlights LED	47
Protecting your hearing.....	10	5 Killer network	49
1 First things first	12	Killer network features	49
Package contents	12	Killer network manager	50
Basic care and tips for using your computer.....	13	Applications.....	51
Turning your computer on and off.....	13	Settings	52
Taking care of your computer	13	Performance	53
Power cord information	14	Killer Wireless	54
Cleaning and servicing.....	14	Killer Ethernet	54
Specifications	15	Wifi Manager.....	55
2 System tour	18	6 Upgrading your computer	57
External components	18	Installation precautions	57
Front view	18	ESD precautions.....	57
Rear view	20	Required tools.....	57
Status indicators	21	Pre-installation instructions	58
Internal components	22	Post-installation instructions	58
Inside the system	22	System covers	59
Mainboard.....	23	Removing the left side system cover	59
3 Setting up your computer	26	Installing the left side system cover	60
Arranging a comfortable work area	26	Removing the right side system cover	61
Selecting a location.....	26	Installing the right side system cover.....	62
Adjusting your chair	26	Removing the rear input/output (I/O) bezel	63
Positioning your computer	27	Installing the rear input/output (I/O) bezel	65
Positioning your monitor	27	Hard drive	66
Positioning your keyboard.....	28	Removing the 2.5-inch hard drive	66
Positioning your mouse.....	28	Installing the 2.5-inch hard drive	70
Connecting the computer	29	Memory.....	73
Connecting a USB mouse.....	29	Memory configuration guidelines	73
Connecting a USB keyboard.....	30	Removing a memory.....	74
Connecting an external monitor	31	Installing a memory.....	75
Connecting audio devices.....	33	Graphics board	76
Connecting to power.....	34	Removing the graphics board	76
Connecting to a network.....	35	Installing the graphics board	80
Connecting to a wired network.....	35	Warnings and regulatory information	84
Connecting to a wireless network	36	Optical drives	84
Setting up a wireless connection	36	Telephone line safety.....	85
Connecting to a wireless network	37	Emergency calls.....	85
Turning on your computer	38	Medical devices	85
		Vehicles	86

Potentially explosive environments	86	USA — FCC and FAA.....	89
Disposal instructions.....	87	FCC radio frequency interference	
ENERGY STAR.....	87	requirements	90
Wireless adapter regulatory information	88	Canada — Industry Canada (IC)	92
Radio frequency interference.....	88	European Union	92
Use on aircraft.....	89	Compliant with Russian regulatory	
The wireless adapter and your health.....	89	certification.....	98

INFORMATION FOR YOUR SAFETY AND COMFORT

Safety instructions

Turning the product off before cleaning

Unplug this product from the wall outlet before cleaning. Do not use liquid cleaners or aerosol cleaners. Use a damp cloth for cleaning.

Warnings

- Do not use this product near water.
- Do not place this product on an unstable cart, stand, or table. If the product falls, it could be seriously damaged.
- Slots and openings are provided for ventilation to ensure reliable operation of the product and to protect it from overheating. These openings must not be blocked or covered. The openings should never be blocked by placing the product on a bed, sofa, rug or other similar surface. This product should never be placed near or over a radiator or heat register, or in a built-in installation unless proper ventilation is provided.
- Never push objects of any kind into this product through cabinet slots as they may touch dangerous voltage points or short-out parts that could result in a fire or electric shock. Never spill liquid of any kind onto or into the product.
- To avoid damage of internal components and to prevent battery leakage, do not place the product on a vibrating surface.

Using electrical power

- This product should be operated from the type of power indicated on the marking label. If you are not sure of the type of power available, consult your dealer or local power company.
- Do not allow anything to rest on the power cord. Do not locate this product where people will walk on the cord.

- If an extension cord is used with this product, make sure that the total ampere rating of the equipment plugged into the extension cord does not exceed the extension cord ampere rating. Also, make sure that the total rating of all products plugged into the wall outlet does not exceed the fuse rating.
- Do not overload a power outlet, strip or receptacle by plugging in too many devices. The overall system load must not exceed 80% of the branch circuit rating. If power strips are used, the load should not exceed 80% of the power strip's input rating.

Product servicing

Do not attempt to service this product yourself, as opening or removing covers may expose you to dangerous voltage points or other risks. Refer all servicing to qualified service personnel.

Unplug this product from the wall outlet and refer servicing to a qualified service personnel when:

- the power cord or plug is damaged, cut or frayed
- liquid was spilled into the product
- the product was exposed to rain or water
- the product has been dropped or the case has been damaged
- the product exhibits a distinct change in performance, indicating a need for service
- the product does not operate normally after following the operating instructions



Note

Adjust only those controls that are covered by the operating instructions, since improper adjustment of other controls may result in damage and will often require extensive work by a qualified technician to restore the product to normal condition.

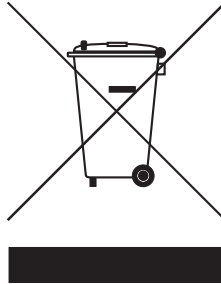


Warning

Danger of explosion if battery is incorrectly replaced. Replace only with the same or equivalent type recommended by the manufacturer. Dispose of used batteries according to the manufacturer's instructions.

Disposal instructions

Do not throw this electronic device into the trash when discarding. To minimize pollution and ensure utmost protection of the global environment, please recycle. For more information on the Waste from Electrical and Electronics Equipment (WEEE) regulations, visit www.acer-group.com/public/Sustainability/index.htm



Tips and information for comfortable use

Computer users may complain of eyestrain and headaches after prolonged use. Users are also at risk of physical injury after long hours of working in front of a computer. Long work periods, bad posture, poor work habits, stress, inadequate working conditions, personal health, and other factors greatly increase the risk of physical injury.

Incorrect computer usage may lead to carpal tunnel syndrome, tendonitis, tenosynovitis or other musculoskeletal disorders. The following symptoms may appear in the hands, wrists, arms, shoulders, neck or back:

- numbness, or a burning or tingling sensation
- aching, soreness or tenderness
- pain, swelling or throbbing
- stiffness or tightness
- coldness or weakness

If you have these symptoms, or any other recurring or persistent discomfort and/or pain related to computer use, consult a physician immediately and inform your company's health and safety department.

The following section provides tips for more comfortable computer use.

Finding your comfort zone

Find your comfort zone by adjusting the viewing angle of the monitor, using a footrest or raising your sitting height to achieve maximum comfort. Observe the following tips:

- refrain from staying too long in one fixed posture
- avoid slouching forward and/or leaning backward
- stand up and walk around regularly to remove the strain on your leg muscles
- take short rests to relax your neck and shoulders
- avoid tensing your muscles or shrugging your shoulders

- install the external display, keyboard and mouse properly and within comfortable reach
- if you view your monitor more than your documents, place the display at the center of your desk to minimize neck strain

Taking care of your vision

Long viewing hours, wearing incorrect glasses or contact lenses, glare, excessive room lighting, poorly focused screens, very small typefaces and low-contrast displays could stress your eyes. The following sections provide suggestions on how to reduce eyestrain.

Eyes

- Rest your eyes frequently.
- Give your eyes regular breaks by looking away from the monitor and focusing on a distant point.
- Blink frequently to keep your eyes from drying out.

Display

- Keep your display clean.
- Keep your head at a higher level than the top edge of the display so your eyes point downward when looking at the middle of the display.
- Adjust the display brightness and/or contrast to a comfortable level for enhanced text readability and graphics clarity.
- Eliminate glare and reflections by:
 - placing your display in such a way that the side faces the windows or any light source
 - minimizing room light by using drapes, shades or blinds
 - using a task light
 - changing the display's viewing angle
 - using a glare-reduction filter
 - using a display visor, such as a piece of cardboard extended from the display's top front edge.
- Avoid adjusting your display to an awkward viewing angle.
- Avoid looking at bright light sources, such as open windows, for extended periods of time.

Developing good work habits

Develop the following work habits to make your computer use more relaxing and productive:

- Take short breaks regularly and often.
- Perform some stretching exercises.
- Breathe fresh air as often as possible.
- Exercise regularly and maintain a healthy body.



Warning

We do not recommend using the computer on a couch or bed. If this is unavoidable, work for only short periods, take breaks regularly, and do some stretching exercises.

Protecting your hearing



Warning

Permanent hearing loss may occur if earphones or headphones are used at high volume for prolonged periods of time.



To protect your hearing, follow these instructions.

- Increase the volume gradually until you can hear clearly and comfortably.
- Do not increase the volume level after your ears have adjusted.
- Do not listen to music at high volumes for extended periods.
- Do not increase the volume to block out noisy surroundings.
- Decrease the volume if you can't hear people speaking near you.

1 First things first



In this section you will find:

- List of package content
- Useful information on caring for your computer
- System specifications

1 FIRST THINGS FIRST

We would like to thank you for making this Acer desktop computer your choice for meeting your computing needs. Before you unpack your computer, make sure that you have enough space to set up your computer.

Package contents

Carefully unpack the carton and remove the contents. If any of the following items are missing or damaged, contact your dealer immediately:

- Predator G1-710
- USB Keyboard
- USB Mouse
- Two 230W adapters
- Adapter holder



Note

USB Keyboard and Mouse may vary by configuration.

Basic care and tips for using your computer

Turning your computer on and off

To turn the computer on, see **Turning on your computer on page 38**.

To turn the computer off, do any of the following:

- Click on the **Windows Start** button, select **Power > Shut down**.
- Right-click the **Windows Start** button and then click **Shut down**.

If you need to power down the computer for a short while, but don't want to completely shut it down, you can put it into Sleep by doing any of the following:

- Press the **power** button on your computer.
- Press the **Windows** key or select the **Windows Start** button, select **Power > Sleep**.
- Right-click the **Windows Start** button > **Shut down or sign out > Sleep**.



Note

If you cannot power off the computer normally, press and hold the power button for more than four seconds to shut down the computer. If you turn off the computer and want to turn it on again, wait at least two seconds before powering up.

Taking care of your computer

Your computer will serve you well if you take care of it.

- Do not expose the computer to direct sunlight. Do not place it near sources of heat, such as a radiator.
- Do not expose the computer to temperatures below 0° C (32° F) or above 50° C (122° F).
- Do not subject the computer to magnetic fields.
- Do not expose the computer to rain or moisture.
- Do not spill water or any liquid on the computer.

- Do not subject the computer to heavy shock or vibration.
- Do not expose the computer to dust or dirt.
- Never place objects on top of the computer.
- Do not slam the computer display when you close it.
- Never place the computer on uneven surfaces.

Power cord information

Here are some ways to take care of your power cord:

- Do not step on the power cord or place heavy objects on top of it. Route the power cord and any cables away from foot traffic.
- When unplugging the power cord, do not pull on the cord itself but pull on the plug.
- The total ampere ratings of the equipment plugged in should not exceed the ampere rating of the cord if you are using an extension cord. Also, the total current rating of all equipment plugged into a single wall outlet should not exceed the fuse rating.

Cleaning and servicing

When cleaning the computer, follow these steps:

1. Turn off the computer.
2. Disconnect the power cord.
3. Use a soft, moist cloth. Do not use liquid or aerosol cleaners.

If your computer is visibly damaged, or does not work normally, please contact your nearest authorized Acer service center.

Specifications

Category	Description
Operating system	<ul style="list-style-type: none"> • Genuine Windows 10 Professional 64-bit • Genuine Windows 10 Home 64-bit
Processor	<ul style="list-style-type: none"> • 6th Generation Intel® Core™ i7 processors • 6th Generation Intel® Core™ i5 processors
Chipset	Intel® H110
System memory	<ul style="list-style-type: none"> • 4/8/16GB DDR4 1.2v 2133 MHz UDIMM • Up to 16GB per DIMM with maximum memory size up to 64GB • Four U-DIMM slots
Media storage	<ul style="list-style-type: none"> • Two HDD bays supporting one 3.5-inch HDD and one 2.5-inch HDD <ul style="list-style-type: none"> - Support 7200 RPM SATA 3.0 3TB / 2TB / 1TB HDDs - Support 5900 RPM SATA 3.0 4TB HDDs • One M.2 SATA module SSD slot <ul style="list-style-type: none"> - Support mSATA 3.0 512GB / 256GB / 128GB SSDs
Optical media drive	<ul style="list-style-type: none"> • 8X Super-Multi drive • Slim type, tray-load
Card reader	SD card reader
Graphics	<ul style="list-style-type: none"> • nVidia® GeForce® GTX TitanX 12GB GDDR5 • nVidia® GeForce® GTX 980Ti 6GB GDDR5 • nVidia® GeForce® GTX 980 4GB GDDR5 • nVidia® GeForce® GTX 970 4GB GDDR5 • nVidia® GeForce® GTX 960 2GB GDDR5
Audio	Creative Sound Blaster X-Fi MB5

Category	Description
Expansion options	<ul style="list-style-type: none"> • One PCIe x16 slot for graphic interface • One M.2 slot for WLAN • One M.2 slot for SSD • Three SATA 3.0 connectors
Connectivity	<ul style="list-style-type: none"> • Wired LAN: Onboard Killer™ Doubleshot Pro E2400 10/100/1000 Ethernet • WLAN: Killer™ Wireless-AC 1535 LAN card with BT combo (802.11ac/a/b/g/n and BT 4.1 LE)
I/O ports	<p>Front panel I/O</p> <ul style="list-style-type: none"> • One headphone/speakers jack • One microphone jack • One USB 3.1 type C port (support fast charging) • One USB 3.0 port (support fast charging) • One power button <p>Rear panel I/O</p> <ul style="list-style-type: none"> • Six audio jacks • Four USB 3.0 ports • One Ethernet (RJ45) jack • Two DC-In jacks
Power supply	Two 230W adapters
Chassis dimension (W x H x D)	110 (W) x 348 (D) x 418 (H) mm (4.33 x 13.7 x 16.46 inches)
Certification	BSMI, VCCI, CE, FCC, CB
Accessories	<ul style="list-style-type: none"> • USB Keyboard • USB Mouse • Adapter holder <p>Note: USB Keyboard and Mouse may vary by configuration.</p>

2 System tour



In this section you will find:



- Hardware features of your computer






2 SYSTEM TOUR

External components

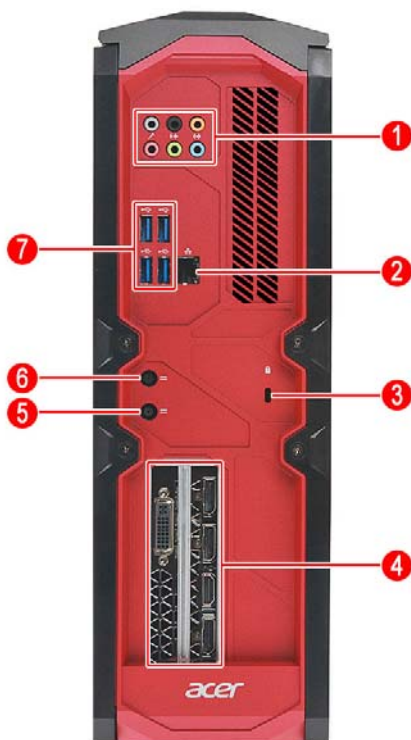
Front view








Item	Icon	Component
1		Power button/Power status indicator
2		Earphone/Headset holders
3		Optical media drive

Item	Icon	Component
4		SD card reader
5		USB 3.1 type C port (support fast charging)
6		One USB 3.0 port (support fast charging)
7		Headphone/speakers jack
8		Microphone jack


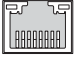
Rear view



Item	Icon	Component
1		Audio jacks
2		Ethernet (RJ45) jack
3		Kensington lock slot
4		Expansion card (graphics board)
5		DC-In jack 2 (graphics card power connector)
6		DC-In jack 1 (system power connector)
7		USB 3.0 ports

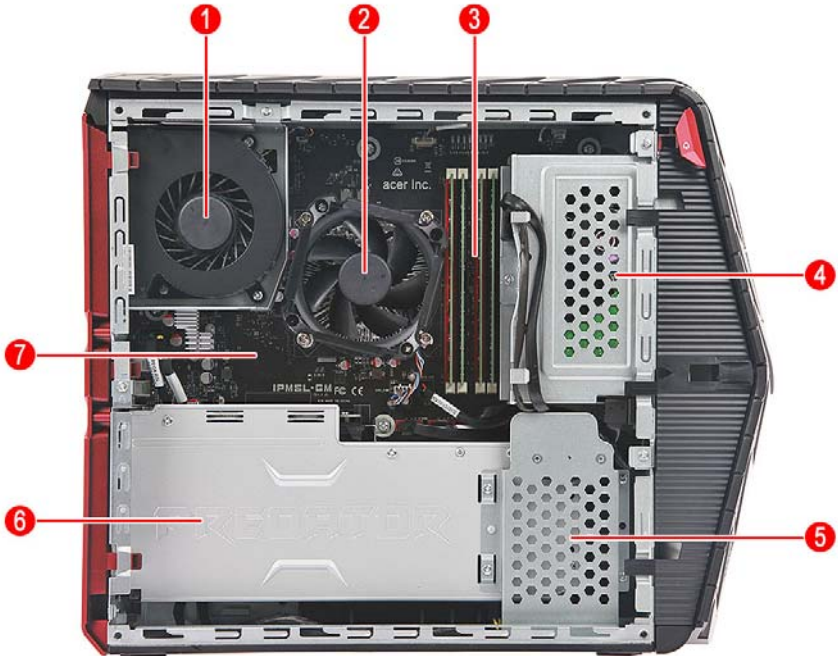
Status indicators

The computer has two status indicators that provide information on computer operating status and Ethernet (RJ45) jack activity.

Icon	Indicator	Status	Description
	Power status	Solid red	Power on
		Blinking red	S3 standby/sleep mode
		Off	Power off
	Ethernet (RJ45) activity indicator (left)	Blinking green	Network access
		Off	No access
	Ethernet (RJ45) link indicator (right)	Solid green	Linking at 100 Mbps data rate
		Solid amber	Linking at 1 Gbps data rate
		Off	No connection or linking at 10 Mbps speed

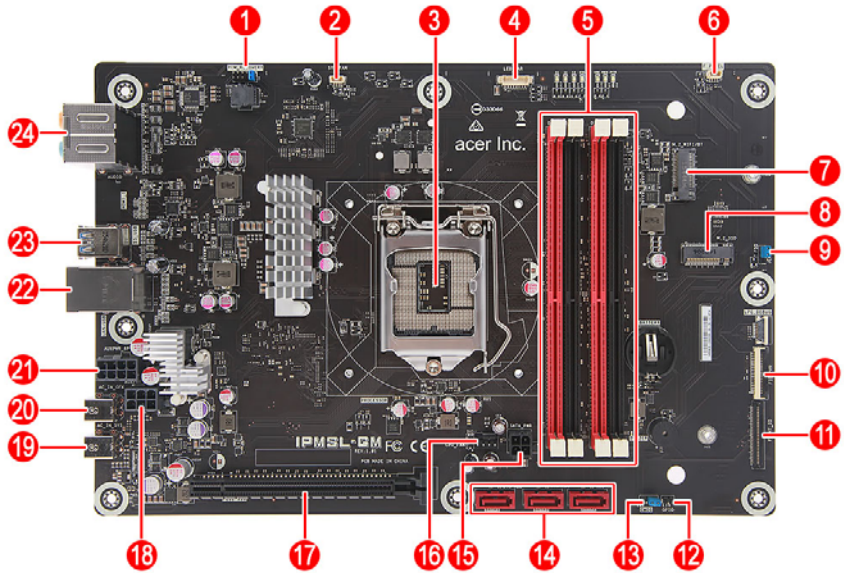
Internal components

Inside the system



Item	Component
1	System fan
2	Thermal module
3	Memory modules
4	HDD/ODD assembly
5	2.5-inch hard drive
6	Expansion card (graphics board)
7	Mainboard

Mainboard



Item	Code	Component
1	ROM_RECOVERY	ROM recovery jumper
2	SYS_FAN	System fan connector
3	CPU	CPU socket
4	LED_BAR	LED bar connector
5	DIMM1/2/3/4	DDR4 DIMM slots
6	F_PANEL	Power button connector
7	M.2_WIFI/BT	M.2 WIFI connector
8	M.2_SSD	M.2 SSD connector
9	FDO	FDO jumper
10	FIO_PWR	FIO power connector
11	FRONT_IO	FIO signal connector
12	GPIO	GPIO jumper
13	CMOS	CMOS jumper

Item	Code	Component
14	SATA1/2/3	SATA connectors
15	SATA_PWR	SATA power connector
16	CPU_FAN	CPU fan connector
17	PCIE x 16	PCI Express x16 slot
18	SYS	System power connector
19	GFX	GFX power connector
20	AUXPWR_6P	AUX power 6-pin connector
21	AUXPWR_8P	AUX power 8-pin connector
22	LAN_USB	LAN + USB 3.0 connectors
23	SS_USB	USB 3.0 connectors
24	AUDIO	Audio connectors

3 Setting up your computer



In this section you will find:

- How to arrange a comfortable work area for your computer
- How to position your computer, monitor, keyboard and mouse
- How to connect your computers to peripheral devices

3 SETTING UP YOUR COMPUTER

Arranging a comfortable work area

Selecting a location

Before unpacking and installing the computer, select a suitable site for the system for maximum efficiency. Consider the following factors when choosing a site for the system:

- Near a grounded power outlet
- Clean and dust free
- Stable surface free from vibration
- Well-ventilated and away from sources of heat
- Secluded from electromagnetic fields produced by electrical devices such as air conditioners, radio, TV transmitters, etc.

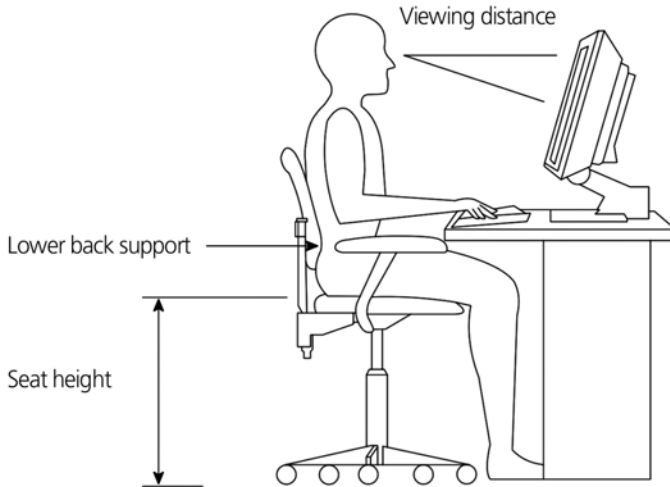
Working safely and comfortably begins with the arrangement of your work space and the proper use of equipment. For this reason, it is very important to take time and think about how you are going to arrange your work area. Refer to the diagram on **Positioning your computer on page 27** as you set up your system.

Adjusting your chair

Having the right kind of chair does not necessarily mean you'll be properly supported. It is necessary to adjust your chair to fit your body. Proper body posture will make you more comfortable and productive.

- Avoid tilting your chair. If you have a chair that tilts, lock the tilt knobs so that your chair will not tilt forward or backward while you are using your computer.
- Adjust your chair height in such a way that you can sit on it with your thighs parallel to the floor and your feet resting flat on the floor.
- Rest your body on the chair back. Your torso works harder to maintain balance if you do not rest your body on that chair back.

Positioning your computer



Take note of the following when selecting a location for your computer:

- Do not plug your computer near any equipment that might cause electromagnetic or radio frequency interference, such as radio transmitters, televisions, copy machines or heating and air-conditioning equipment.
- Avoid dusty areas and extremes of temperature and humidity.
- You may place your computer beside your desk or under your table, as long as it does not block the space you need for working and moving.

Positioning your monitor

Place your monitor at a comfortable viewing distance, usually 50 to 60 cm away. Adjust the display in such a way that the top of the screen is at or slightly below eye level.

Positioning your keyboard

The location of the keyboard is a very important factor for your posture. Placing it too far away will make your body lean forward, forcing you to sit in an unnatural position. Placing it too high will add tension to your shoulder muscles.

- The keyboard should be placed just above your lap. Adjust the keyboard height by flipping the folding strands located under the keyboard.
- Keep your lower arms parallel to the floor as you type. Your upper arms and shoulders should be relaxed. Then try typing with a light touch. If you feel any shoulder or neck strain, stop for a while and check your posture.
- Position your keyboard in front of your monitor. Putting your keyboard beside your monitor will make you turn your head while you type which could add tension to your neck muscles.

Positioning your mouse

- The mouse should be placed on the same surface as your keyboard so that you can reach it with ease.
- Adjust its position to allow enough space for movement without making you stretch or lean over.
- Use your arm to move the mouse. Do not rest your wrist on the table when moving the mouse.
- Keyboard should be placed just above your lap. Adjust the keyboard height by flipping the folding strands located under the keyboard.

Connecting the computer



Note

The peripheral devices shown in the following images are for your reference only. Actual device models may vary in select countries.

Connecting a USB mouse

Attach the mouse cable to any USB port on your computer.



Information on USB 3.0

- USB 3.0 compatible ports are blue.
- Compatible with USB 3.0 and earlier devices.
- For optimal performance, use USB 3.0-certified devices.
- Defined by the USB 3.0 specification (SuperSpeed USB).

Connecting a USB keyboard

Attach the keyboard cable to any USB port on your computer.



Connecting an external monitor

You can connect an external monitor using the HDMI connector or DVI-D connector.

HDMI output

1. Connect the video cable from the monitor to the HDMI connector on your computer.



DVI-D output

1. Connect the DVI-D cable from the monitor to the DVI-D connector of the computer.
2. Secure the connection using the cable screws.



Connecting audio devices

The computer's audio jacks (headphone/speakers, microphone, line-in, or line-out jack) allows you to connect audio devices such as a headphone, headset, microphone, or speakers.

Connect the audio device's cable to any of the audio I/O ports located on the front or rear panel of the computer.



Audio Ports

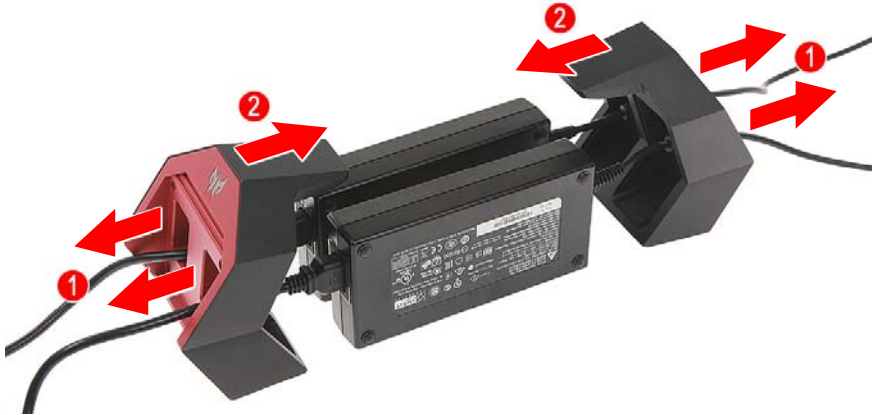
Speaker System	Side Speaker	Rear Speaker	C/Sub Speaker	Line-in	Line-out	Mic
1.1	x	x	x	o	o	x
2.1	x	x	o	x	o	x
4.1	o	o	x	x	o	x
5.1	x	o	o	x	o	x
7.1	o	o	o	x	o	x

o - Denotes an audio device connection to an audio jack.

x - Denotes no connection made.

Connecting to power

1. Insert the adapter cables (1) and place the power adapters into the power adapter holder (2).



2. Plug the power cords into the DC-in jack 1 and 2 power connectors, then into an electrical outlet.



Note

The system will not turn on unless both power adapters are plugged-in.

Connecting to a network

Your computer's built-in network features make it easy for you to connect your computer to the internet using a cable or a wireless connection.

First though, in order to connect to the internet, you'll need to sign up for internet services from an Internet Service Provider (ISP) — usually a phone or cable company — that will have to go to your home or office to set up internet service. The ISP will install a small box, a router or mode, that will allow you to connect to the internet.

Connecting to a wired network

Use a network cable (RJ45) to connect your computer to a router or a local area network (LAN).

1. Plug the network cable into the Ethernet port on the computer.
2. Plug the other end of the network cable to your LAN.



Note

Consult your network administrator for information on how to set up your internet connection.

Connecting to a wireless network

This computer is equipped with a wireless communication feature. This feature allows you to connect to a wireless Ethernet-based network and communicate with other wireless communication devices.

Your computer's wireless connection is turned on by default and Windows will detect and display a list of available networks during setup. Select your network and enter the password if required.

You can use the network management options to turn your wireless network on/off or control what is shared over the network.



Note

Before you proceed, ensure that the wireless LAN module is installed and working properly.

Setting up a wireless connection

Following illustration shows an example of wireless network installation.



Connecting to a wireless network



Note

Ensure you have a wireless router or access point and current internet connection through the ISP of your choice. Make a note of the wireless network's name and password (if necessary). If you are trying to connect to a public network (such as at a coffee shop), make sure you have the wireless network's name.

Please refer to your ISP or router documentation for details on connecting to the internet.

To connect to a wireless network (Windows 10):

1. In the icon tray in the lower right-hand corner of the screen, select the **Notifications** icon to open the *Notifications* pane.
2. Select **All Settings**.
3. Select **Network & Internet**.
4. Click **Wi-Fi**.
5. You will see a list of available wireless networks. Select the one you wish to use.
6. Once you select a wireless network, click **Connect**.
7. If required, enter the security password to the network.

Turning on your computer

After making sure you have properly set up your computer, applied power and connected all necessary peripherals, you can now power on the system.

1. Turn your monitor on.
2. Press the **power** button on your computer. The LED on the power button will turn to solid red to indicate that power is on.



Turning off your computer

To turn off your computer (Windows 10):

1. From the *Start* menu, select **Power**.
2. Select **Shut down**.

Using a USB device

Your computer has six USB 3.0 ports located on the front and rear panels. You can connect USB devices such as keyboards, mouse, storage devices, power banks, smartphones, or digital cameras to these ports.

Connecting a USB storage device

To connect a USB device, simply plug the device cable into any of the USB port located on the front and rear panels of your computer.



Disconnecting a USB device

To disconnect a USB device from your computer, click on the **Safely Remove Hardware** icon on the taskbar and click on the **device**. When the device can be safely removed, disconnect the device from the computer. See your peripheral's documentation for details.



Using the optical disc drive

To insert an optical disc:

1. While the computer is on, press the **ODD eject** button.
2. When the disk tray slides open, place the disc gently on the tray. Make sure that the label or title side of the disc is facing outward.
3. Push the tray and it will close automatically.

Playing DVD movies

If your computer is equipped with a DVD drive, you can play movies on your computer or on a high-definition TV via the DVI-D or HDMI connector.

1. Insert the disc into the drive.
2. After a few seconds, the movie will start playing.
3. If the movie does not start playing, open your movie playback program and open the disc from the *File* menu.



Important

When you launch the DVD player for the first time, the program asks you to enter the region code. DVDs are available for 6 regions.

Region code	Country or region
1	USA, Canada
2	Europe, Middle East, South Africa, Japan
3	Southeast Asia, Taiwan, South Korea
4	Latin America, Australia, New Zealand
5	Former USSR, parts of Africa, India
6	People's Republic of China



Note

To change the region code, insert a DVD movie of a different region into the DVD drive. Once your DVD drive is set to a region code, it will only play DVDs for that region. You can set the region code a maximum of five times (including the first time), after which the last region code set will remain permanent. Recovering your hard drive does not reset the number of times the region code has been set.

4 PredatorSense



In this section you will find:

- Introduction to the PredatorSense utility
- How to use PredatorSense

4 PREDATORSENSE

PredatorSense (DT) V1.0 is an Acer proprietary utility to enhance the user experience of Gaming products on Microsoft Windows 10.

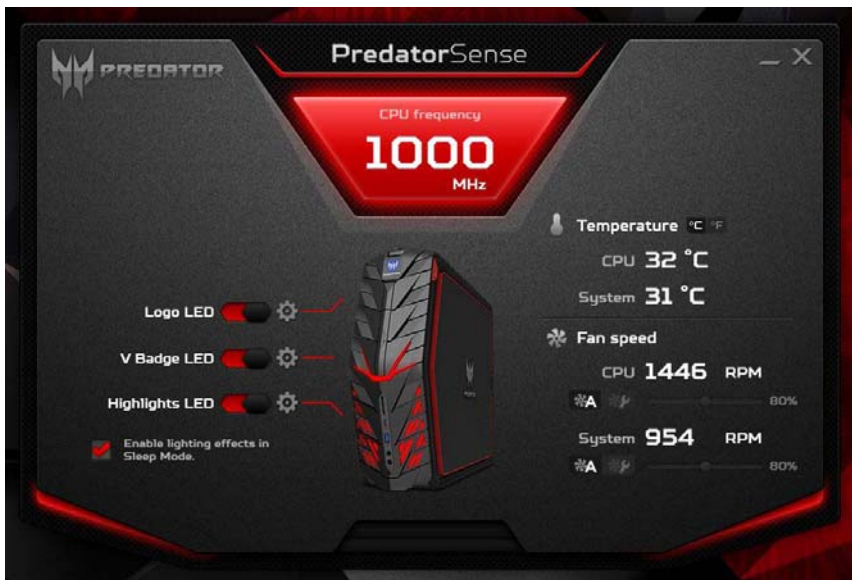
The central idea of this utility is to provide a user interface to easily control fan speed, RGB chassis and also display system information.

PredatorSense features

- Fan speed control
- System information dashboard
- RGB chassis

To set up the PredatorSense application (Windows 10):

1. From the *Start* menu, select **All apps**.
2. Select **Acer**.
3. Select **PredatorSense**.



Alternatively, you can double-click the PredatorSense desktop shortcut to run the application.

Category	Description
CPU frequency	Shows CPU frequency information in MHz.
Temperature	<ul style="list-style-type: none"> Shows CPU and System temperature. Options: °C or °F
CPU	Shows CPU temperature information.
System	Shows System temperature information.
Fan Speed	<ul style="list-style-type: none"> Shows CPU and System fan speed in RPM. Options: Automatic or Manual <p>Note: When manual fan speed is selected, you can adjust the fan speed to your preference by dragging the slider.</p>
CPU	Shows current speed of CPU fan.
System	Shows current speed of System fan.
Logo LED	Enable or Disable Logo LED effects. Click settings to configure lighting effects.
V Badge LED	Enable or Disable V Badge LED effects. Click settings to configure lighting effects.
Highlights LED	Enable or Disable Highlights LED effects. Click settings to configure lighting effects.

Logo LED



Category	Description
Basic colors	Choose the basic color of your lighting effects.
Recent colors	Shows the 5 most recent colors the user has created using the More Colors button.
More colors	Select to get more color options.
Light patterns	<ul style="list-style-type: none"> Shows available light pattern options. Options: Marquee/Pulsing/None
Speed	Adjust the display speed of lighting effects.
Delay	Adjust the timing in-between display of lighting effects.

V Badge LED



Category	Description
Basic colors	Choose the basic color of your lighting effects.
Recent colors	Shows the 5 most recent colors the user has created using the More Colors button.
More colors	Select to get more color options.
Light patterns	<ul style="list-style-type: none"> Shows available light pattern options. Options: Meteor Showers/Marquee/Pulsing/Music/None <p>Note: The Music lighting pattern option will only function when a speaker or headphone is plugged-in into the system.</p>
Speed	Adjust the display speed of lighting effects.
Delay	Adjust the timing in-between display of lighting effects.

Highlights LED



Category	Description
Basic colors	Choose the basic color of your lighting effects.
Recent colors	Shows the 5 most recent colors the user has created using the More Colors button.
More colors	Select to get more color options.
Light patterns	<ul style="list-style-type: none"> Shows available light pattern options. Options: Marquee/Pulsing/Music/None Note: The Music lighting pattern option will only function when a speaker or headphone is plugged-in into the system.
Speed	Adjust the display speed of lighting effects.
Delay	Adjust the timing in-between display of lighting effects.

5 Killer network



In this section you will find:

- Introduction to the Killer Network solution
- How to use Killer Network Manager

5 KILLER NETWORK

Your computer is equipped with an onboard Killer™ E2400 Gigabit Ethernet LAN and Killer™ Wireless-AC 1535.

Killer™ E2400 Gigabit Ethernet LAN is an ultra-high performance, ultra-low power Ethernet controller with a fully integrated 10/100/1000 Mbps NIC/LOM. It is designed for blazing fast performance for faster download and improved online gaming experience.

Killer™ Wireless-AC 1535 is a high-performance dual band (2.4 GHz and 5GHz) 802.11a/b/g/n/ac wireless networking adapter with full MU-MIMO and Transmit Beamforming support and ExtremeRange™ Technology that extends intelligence and control along with superior wireless networking speed to new levels.

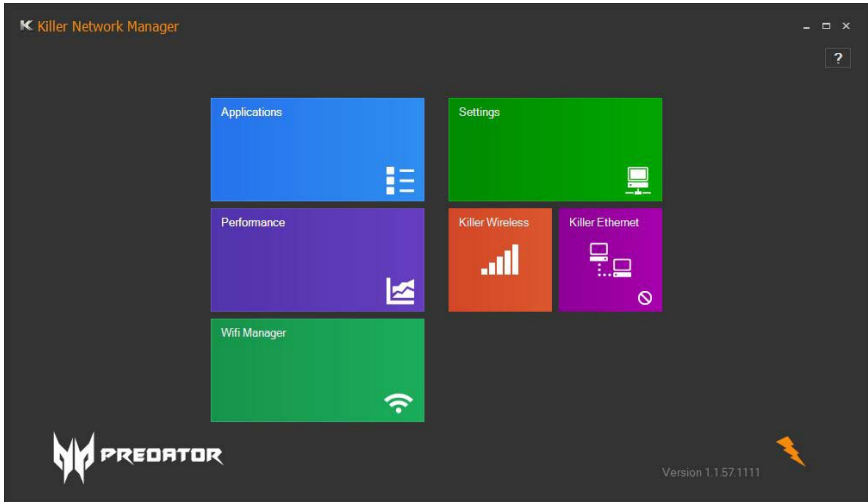
Killer network features

- **Latency Reduction™ Technology** – is designed specifically to improve online gaming and HD video performance by getting network packets to your applications and web browsers up to 50% faster than the competition during single application usage, and potentially by more than 10x faster when multitasking.
- **Advanced Stream Detect™ 2.0** – automatically classifies and prioritizes network traffic for online games, HD video, and websites for better quality and fewer interruptions in your online experience.
- **Visual Bandwidth Control™** – shows you which applications and websites are monopolizing your bandwidth, and gives you the control to optimize performance by adjusting priorities and setting bandwidth limits so that low priority traffic doesn't interfere with your multimedia applications or favorite websites.
- **Killer DoubleShot™ Pro** – gives you unprecedented speed, intelligence and control of your online entertainment experience by automatically picking the fastest network connection (Killer™ Wireless-AC 1535 or Killer™ E2400) and sends all high priority traffic over that interface and then sends standard traffic over the other interface. This ensures the highest priority traffic will always be put on the fastest and most reliable link.

Killer network manager

To set up the Killer Network application (Windows 10):

1. From the *Start* menu, select **All apps**.
2. Select **Killer Networking**.
3. Select **Killer Networking Manager**.

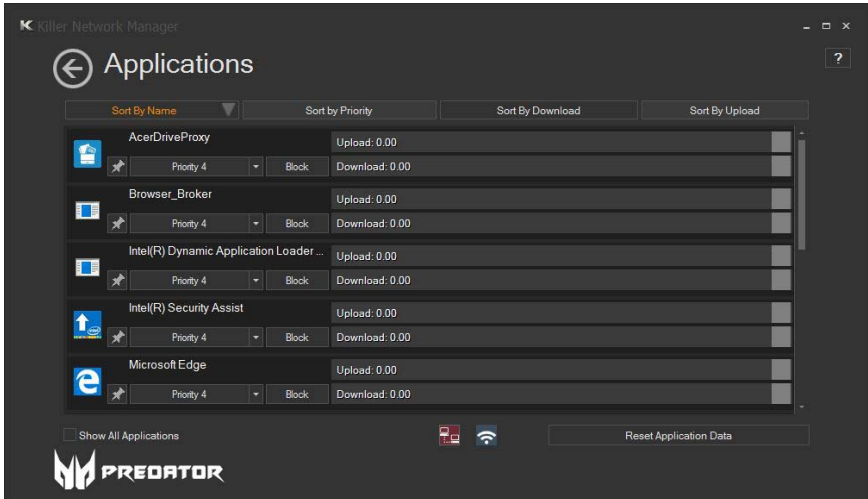


Alternatively, you can double-click the Killer Networking Manager desktop shortcut to run the application.

Category	Description
Applications	Select to configure applications that are using network connection.
Settings	Select to configure Killer Network settings.
Performance	Select to view system network performance.
Killer Wireless	Select to view wireless network information.
Killer Ethernet	Select to view LAN information.
Wifi Manager	Select to view Wifi information.

Applications

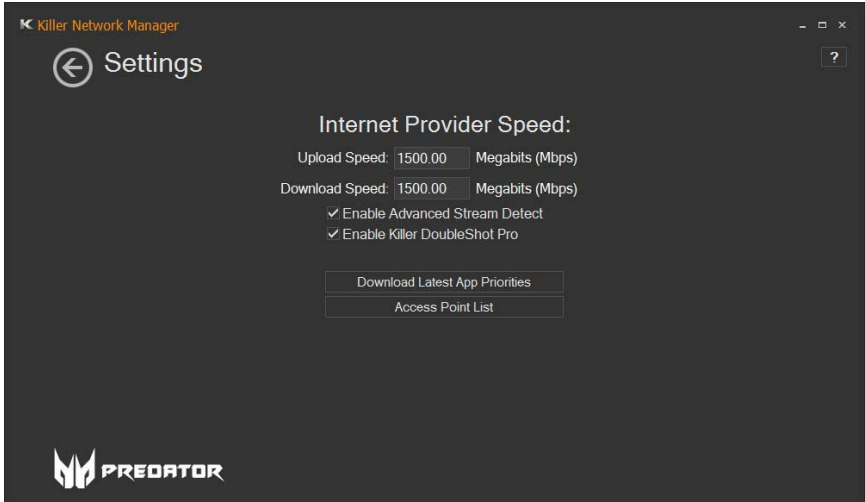
Select the Applications tile to configure applications that are using network connections. You can block or set the priority of network connections of each application on this page.



Category	Description
Sort By Name	Sort applications that are using network connection by alphabetical order.
Sort By Priority	Sort applications that are using network connection by priority.
Sort By Download	Sort applications that are using network connection by active data download size.
Sort By Upload	Sort applications that are using network connection by active data upload size.
Show All Applications	Shows all applications that are using network connection.
Reset Application Data	Reset data of all applications that are using network connection.

Settings

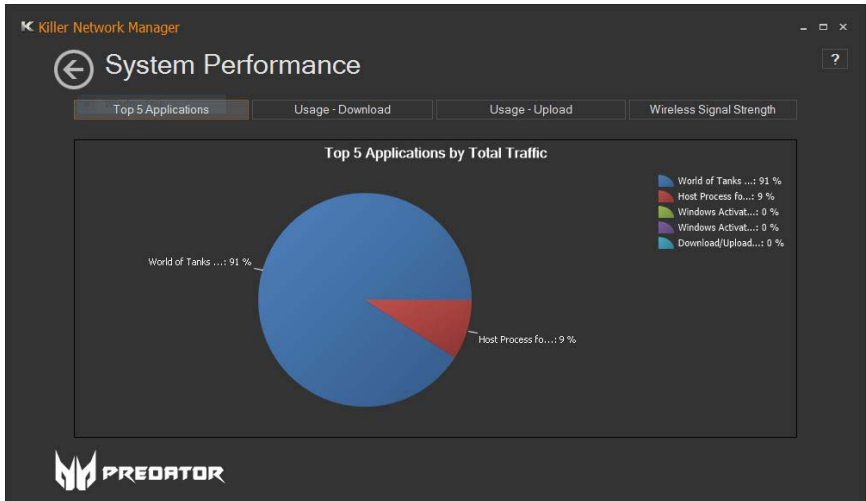
Select the Settings tile to configure Killer Network settings.



Category	Description
Upload Speed	Set the upload speed of your network connection.
Download Speed	Set the download speed of your network connection.
Enable Advanced Stream Detect	Enable or disable the Advanced Stream Detect feature of Killer network.
Enable Killer DoubleShot Pro	Enable or disable the Killer DoubleShot Pro feature of Killer network.
Download Latest App Priorities	Select to update the latest application rules, if available.
Access Point List	Select to view a list of access points that you have previously connected.

Performance

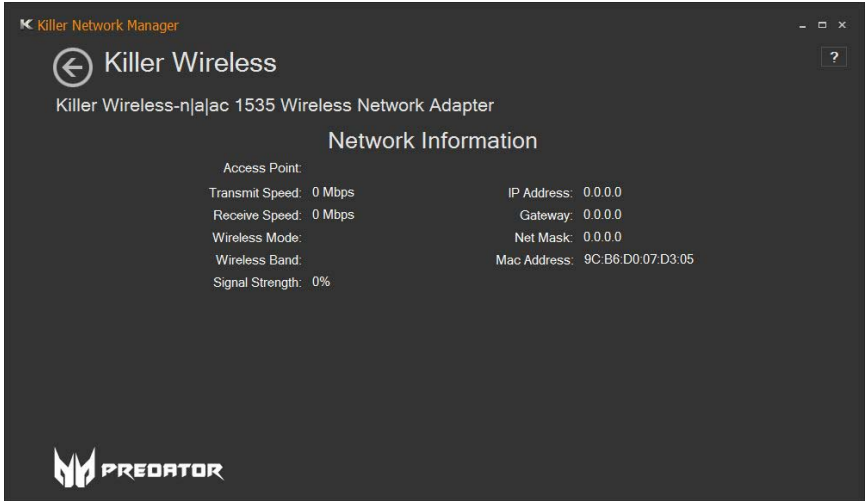
Select the Performance tile to get an overview of your system network traffic.



Category	Description
Top 5 Applications	Shows the top 5 applications by total traffic history.
Usage - Download	Shows the incoming traffic in Megabits over the past two minutes.
Usage - Upload	Shows the outgoing traffic in Megabits over the past two minutes.
Wireless Signal Strength	Shows the Wi-Fi signal strength over the past two minutes.

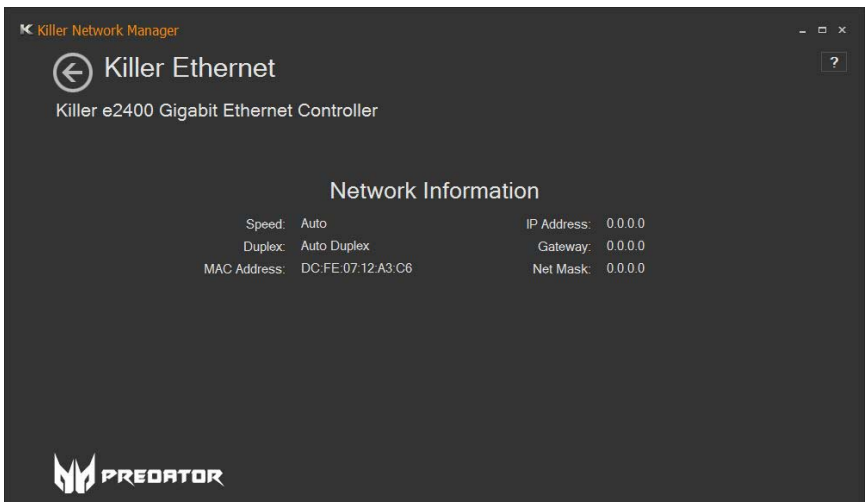
Killer Wireless

Select the Killer Wireless tile to see your wireless network information.



Killer Ethernet

Select the Killer Ethernet tile to see your LAN information.



Wifi Manager

Select the Wifi Manager tile to see all available wireless network connection.



6 Upgrading your computer



In this section you will find:

- Instructions on how to replace a hardware component

6 UPGRADING YOUR COMPUTER

Installation precautions

Before you install any computer component, we recommend that you read the following sections. These sections contain important ESD precautions along with pre-installation and post-installation instructions.

ESD precautions

Electrostatic discharge (ESD) can damage your processor, disk drives, expansion boards, and other components. Always observe the following precautions before you install a computer component:

1. Do not remove a component from its protective packaging until you are ready to install it.
2. Wear a wrist grounding strap and attach it to a metal part of the computer before handling components. If a wrist strap is not available, maintain contact with the computer throughout any procedure requiring ESD protection.

Required tools

In performing the component replacement process, you will need the following tools:

- Philips screwdriver
- Hex screwdriver
- Flat screwdriver
- Scissors



Note

The screws for the different components vary in size. During the disassembly process, group the screws with their corresponding components to avoid mismatches when putting back the components.

Pre-installation instructions

Always observe the following before you install any component:

1. Make sure that the ODD and card reader slot is empty.
2. Turn off the power to the computer and all peripherals.
3. Unplug the power cord from the computer.
4. Unplug the network cable and all connected peripheral devices from the computer.
5. Place the computer on a flat, steady surface.
6. Open your computer according to the instructions on **Removing the left side system cover on page 59**.
7. See the following sections for specific instructions on the component you wish to install.



Warning

Not turning off the computer properly before you start installing the components may cause serious damage. Do not attempt the procedures described in the following sections unless you are a qualified service technician.

Post-installation instructions

Observe the following after installing a computer component:

1. See to it that the components are installed according to the step-by-step instructions in their respective sections.
2. Replace any expansion boards or peripherals that you removed earlier.
3. Replace the system covers. See **Installing the left side system cover on page 60** and **Installing the right side system cover on page 62**.
4. Connect the necessary cables.
5. Turn on your computer.

System covers

Removing the left side system cover

1. Before you proceed, make sure that you have turned off your computer and all peripherals connected to it. Read the **Pre-installation instructions on page 58**.
2. Remove the two screws that secure the system cover to the computer (1).
3. Slide the cover toward the back of the computer and pull away from the side of the computer (2).



4. Set the cover aside for re-installation later.

Installing the left side system cover

1. Align the cover to the sides of the computer and slide the cover toward the front of the computer (1).
2. Secure the cover with two screws (2).



3. Observe the **Post-installation instructions on page 58.**

Removing the right side system cover

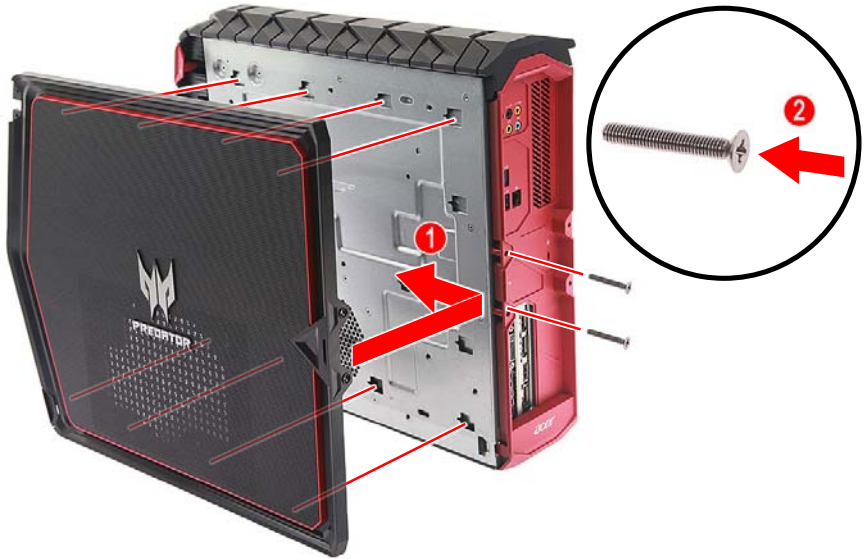
1. Before you proceed, make sure that you have turned off your computer and all peripherals connected to it. Read the **Pre-installation instructions on page 58**.
2. Remove the two screws that secure the system cover to the computer (1).
3. Slide the cover toward the back of the computer and pull away from the side of the computer (2).



4. Set the cover aside for re-installation later.

Installing the right side system cover

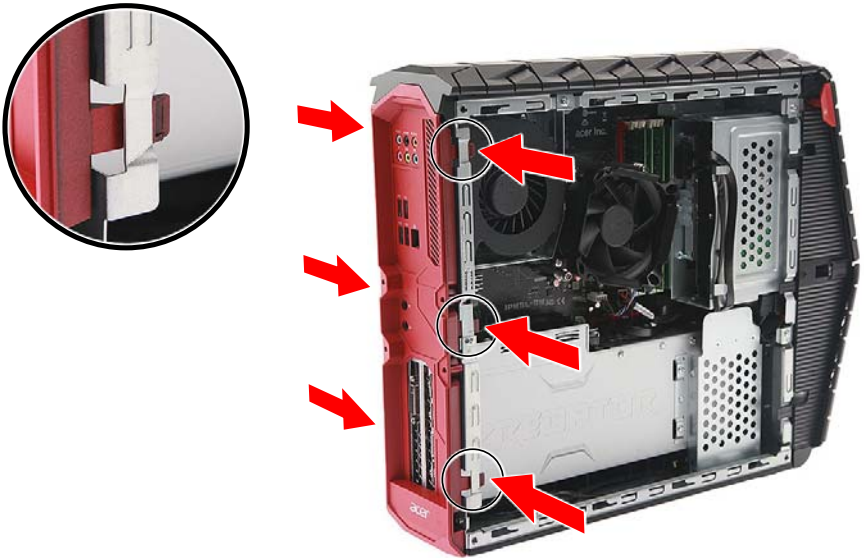
1. Align the cover to the sides of the computer and slide the cover toward the front of the computer (1).
2. Secure the cover with two screws (2).



3. Observe the **Post-installation instructions on page 58.**

Removing the rear input/output (I/O) bezel

1. Before you proceed, make sure that you have turned off your computer and all peripherals connected to it. Read the **Pre-installation instructions on page 58**.
2. Remove the right side system cover. See **Removing the right side system cover on page 61**.
3. Disengage the latches that secure the rear I/O bezel to the chassis.



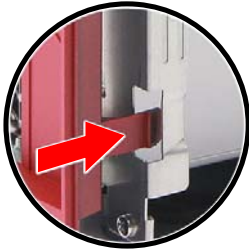
4. Detach the rear I/O bezel.



5. Set the rear I/O bezel aside for re-installation later.

Installing the rear input/output (I/O) bezel

1. Place the rear I/O bezel into the chassis and push until all the latches lock into place.



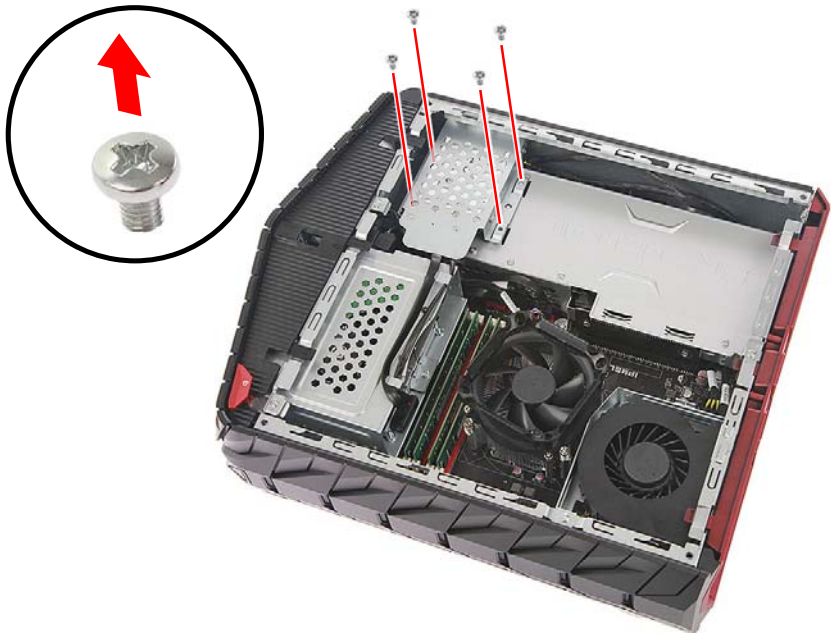
2. Observe the **Post-installation instructions on page 58.**

Hard drive

The computer supports installation of one 2.5-inch SATA hard drive and one 3.5-inch SATA hard drive.

Removing the 2.5-inch hard drive

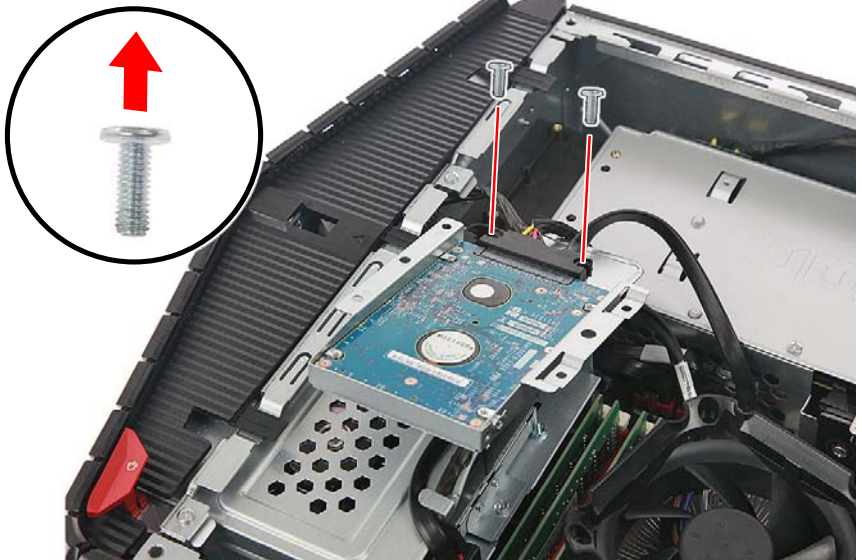
1. Perform **Pre-installation instructions on page 58**.
2. Remove the four screws that secure the HDD bracket to the graphics card cover.



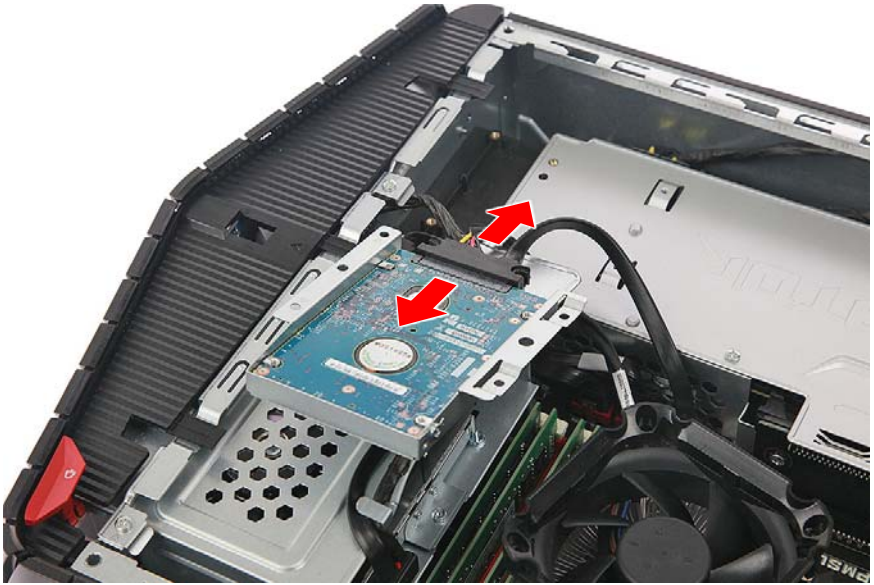
3. Lift the HDD bracket from the graphics card cover.



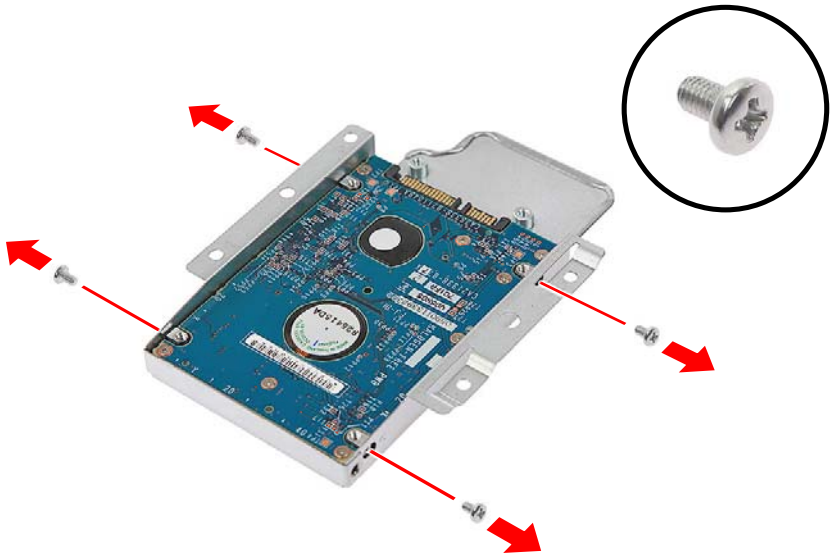
4. Remove the two screws that secure the HDD cable to the bracket.



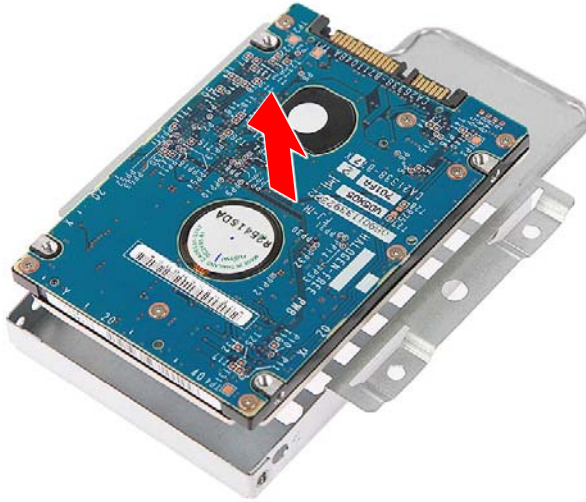
5. Disconnect the cable from the hard drive.



6. Remove the four screws that secure the hard drive to the bracket.

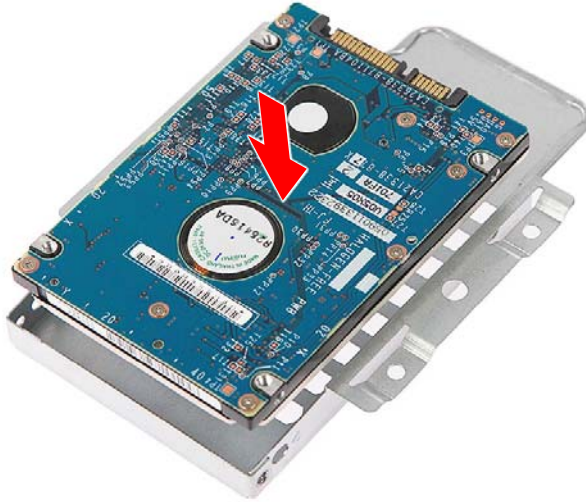


7. Remove the hard drive from the bracket.

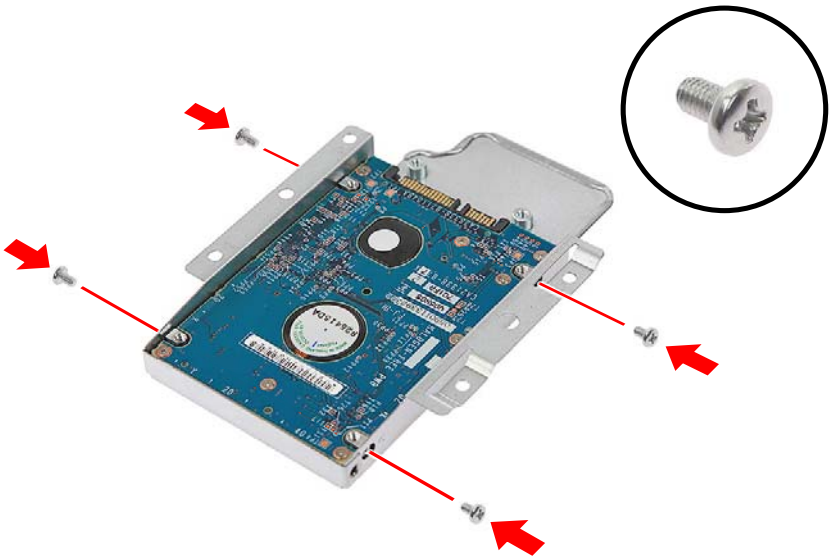


Installing the 2.5-inch hard drive

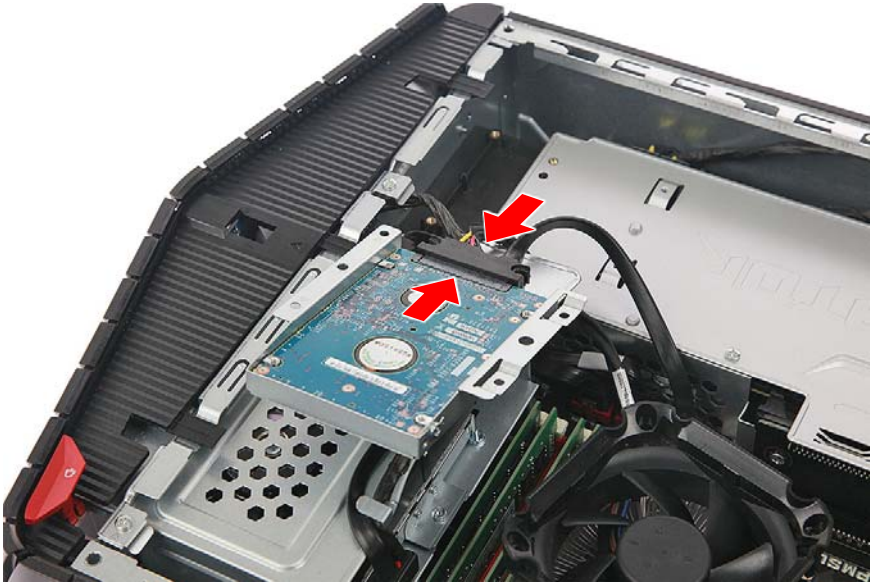
1. Remove the new hard drive from its packaging.
2. Insert the new hard drive into the bracket.



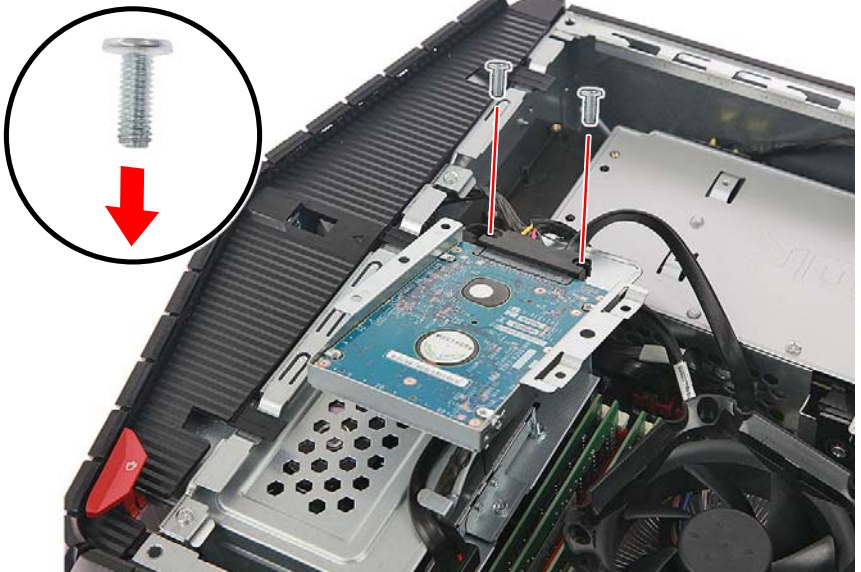
3. Secure the new hard drive with four screws.



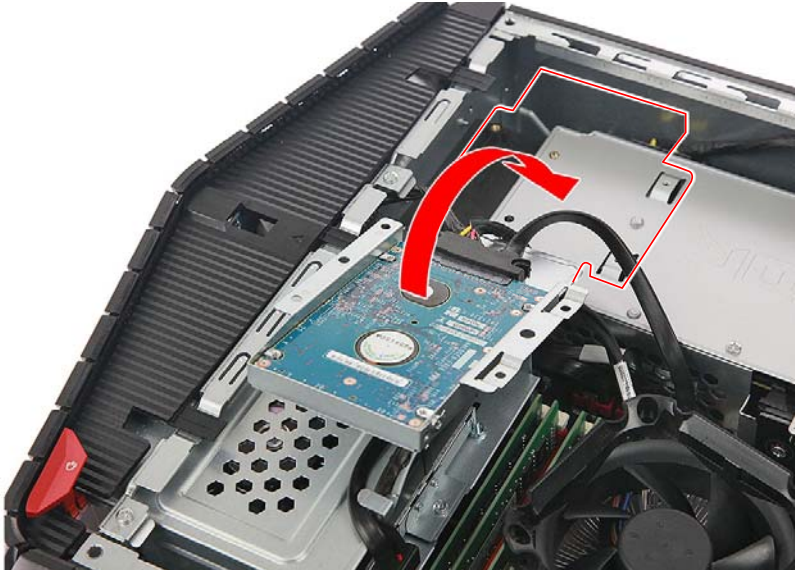
4. Connect the cable to the new hard drive.



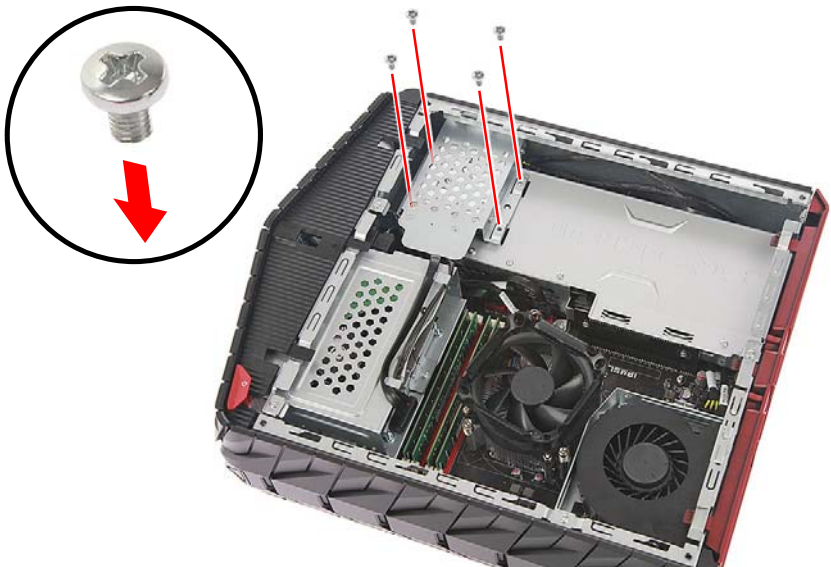
5. Secure the HDD cable with two screws.



6. Place the HDD bracket into the graphics card cover.



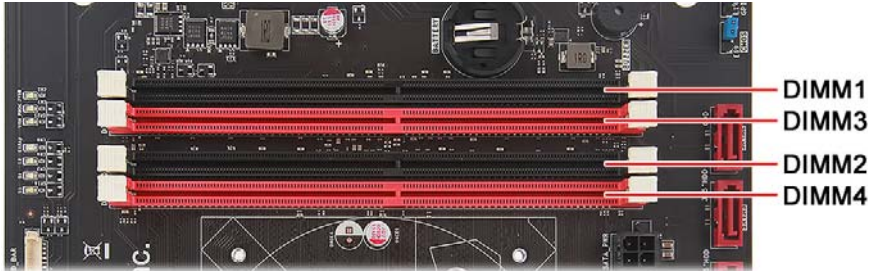
7. Secure the HDD bracket with four screws.



8. Observe the **Post-installation instructions on page 58.**

Memory

The computer has four DDR4 U-DIMM slots that support up to 64 GB maximum system memory.



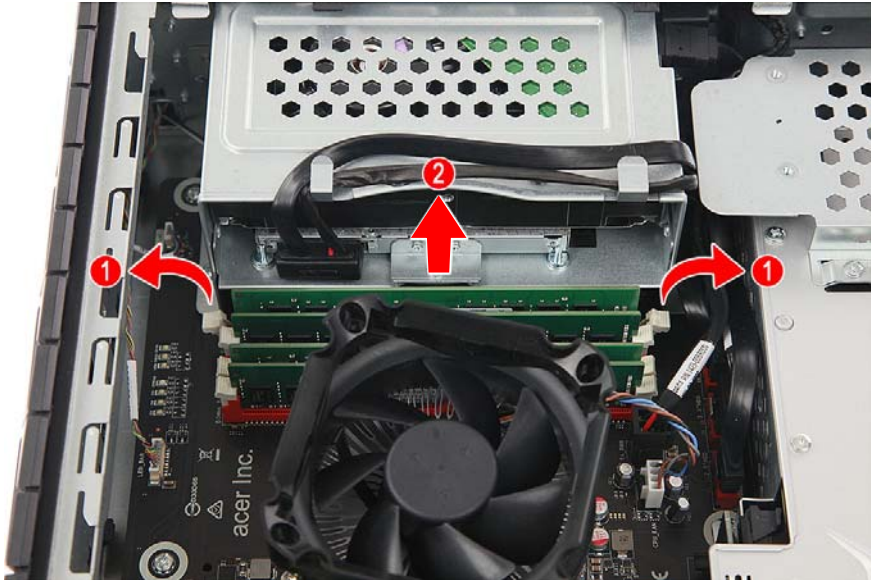
Memory configuration guidelines

- To ensure data integrity, use only Acer-approved DDR4 2133 MHz type memory modules.
- Memory modules must be installed starting with DIMM1 slot.
- Always handle memory modules by its edges.
- When installing memory modules, populate the DIMM slots according to the table below.

Size	DIMM1	DIMM2	DIMM3	DIMM4
8GB	4GB	4GB	N/A	N/A
16GB	4GB	4GB	4GB	4GB
16GB	8GB	8GB	N/A	N/A
32GB	8GB	8GB	8GB	8GB
32GB	16GB	16GB	N/A	N/A
64GB	16GB	16GB	16GB	16GB

Removing a memory

1. Perform **Pre-installation instructions on page 58**.
2. Press outward the holding clips on both sides of the DIMM slot outward to release the memory module (1).
3. Gently pull the memory module upward to remove it from the DIMM slot (2).



4. If you intend to install a new memory module, proceed to the next section for related procedure, then observe the **Post-installation instructions on page 58**.

Installing a memory

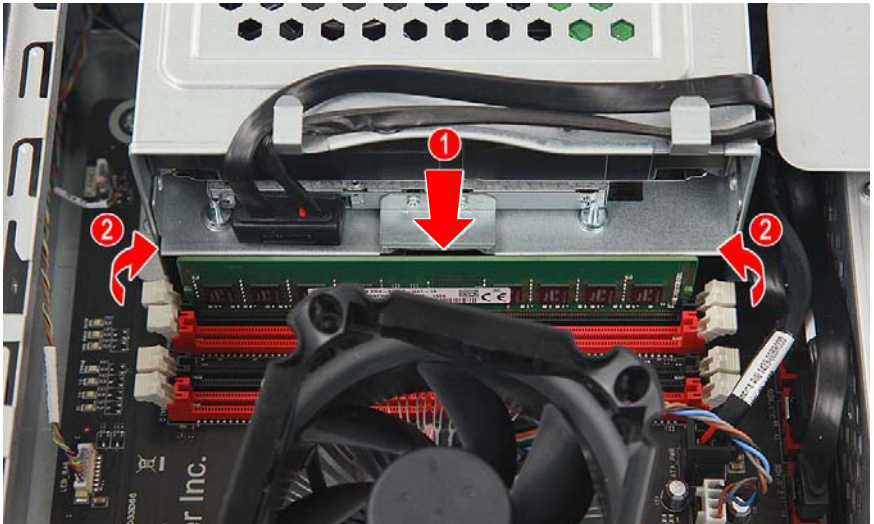


Note

DIMM slots on the mainboard must be installed only in certain configurations. Numbers next to DIMM slots correspond to installation sequence.

Be sure to install the memory module in DIMM1 slot followed by DIMM2 slot.

1. Perform **Pre-installation instructions on page 58**.
2. Select an empty DIMM slot.
3. Remove the new memory module from its packaging, handling it by the edges.
4. Align then insert the memory module into the DIMM slot (1).
5. Push the module to the slot until the retaining clips snap inward (2).
The module is keyed so it can only be inserted in one direction. If the module does not fit, make sure that the notch in the module lines up with the tab in the memory slot.



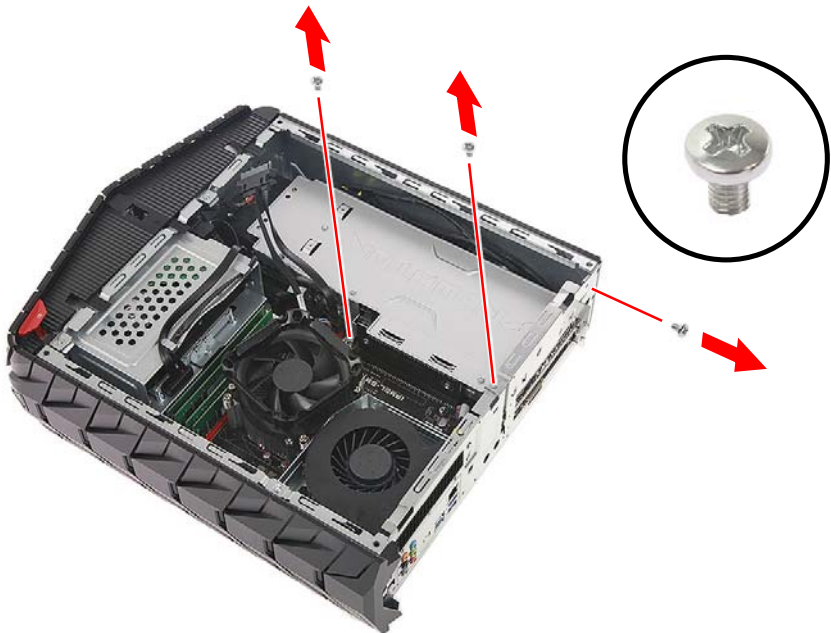
6. Repeat steps 2~5 to install the other memory modules.
7. Observe the **Post-installation instructions on page 58**.

Graphics board

The computer contains one graphics board installed in the PCIe x16 slot.

Removing the graphics board

1. Perform **Pre-installation instructions on page 58**.
2. Remove the right side system cover. See **Removing the right side system cover on page 61**.
3. Remove the rear I/O bezel. See **Removing the rear input/output (I/O) bezel on page 63**.
4. Remove the three screws that secure the graphics board to the chassis.



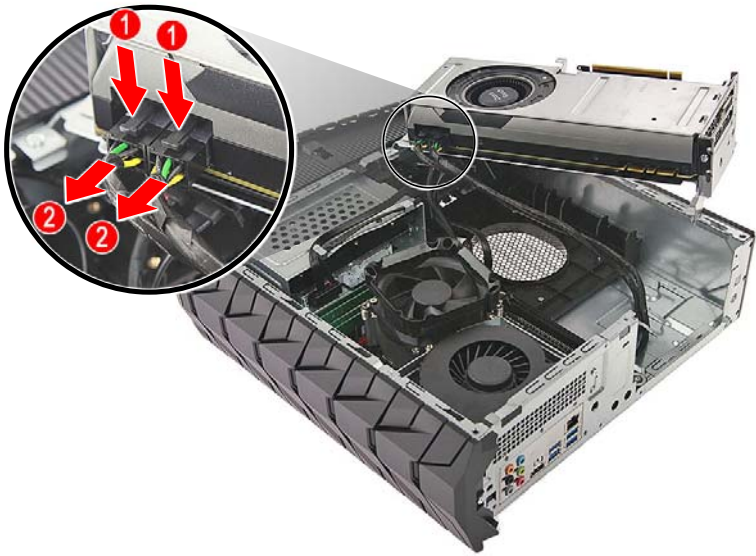
5. Release the latch that secures the graphics board to the mainboard.



6. Detach the graphics board from the PCIe x16 slot.



7. Disconnect the power cables from the graphics board.



8. Release the latch that secures the graphics board to the bracket.



9. Remove the graphics board from the bracket.



10. If you intend to install a new I/O expansion board, proceed to the next section for related procedure, then observe the **Post-installation instructions on page 58**.

Installing the graphics board

1. Insert the graphics board into the bracket.



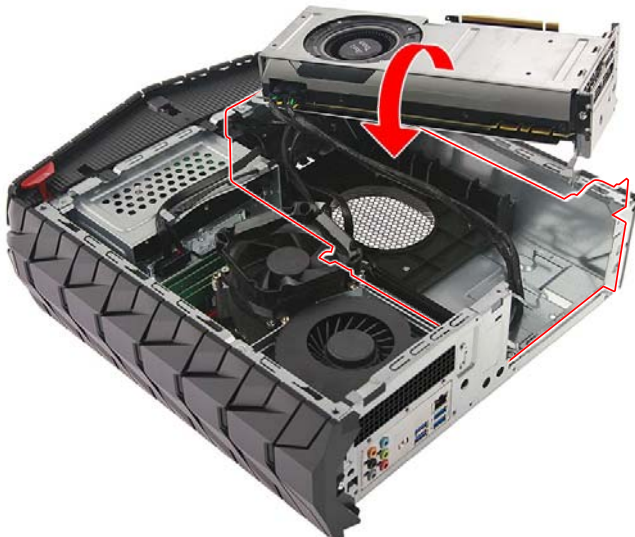
2. Push the retention latch to secure the graphics board to the bracket.



3. Connect the power cables to the graphics board.



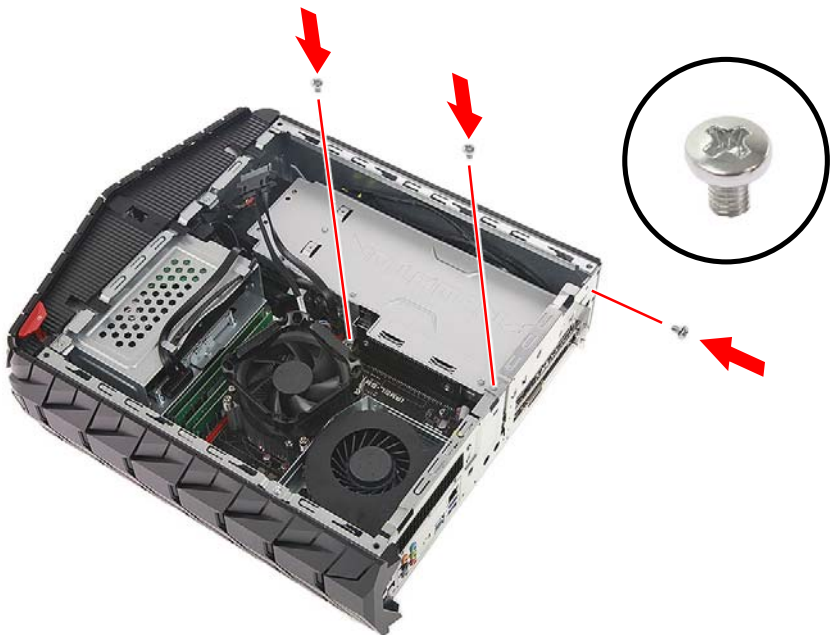
4. Insert the graphics board into the PCIe x16 slot.



5. Push the retention latch to secure the graphics board to the bracket.



6. Secure the graphics board with three screws.



7. Replace the rear input/output (I/O) bezel. See **Installing the rear input/output (I/O) bezel on page 65.**
8. Observe the **Post-installation instructions on page 58.**

WARNINGS AND REGULATORY INFORMATION

Optical drives

CAUTION: This appliance contains a laser system and is classified as a "CLASS 1 LASER PRODUCT." In case of any trouble with this device, please contact your nearest AUTHORIZED service station. To prevent direct exposure to the laser beam, do not try to open the enclosure.

CLASS 1 LASER PRODUCT

CAUTION: INVISIBLE LASER RADIATION WHEN OPEN. AVOID EXPOSURE TO BEAM.

APPAREIL A LASER DE CLASSE 1 PRODUIT

LASERATTENTION: RADIATION DU FAISCEAU LASER INVISIBLE EN CAS D'OUVERTURE. EVITER TOUTE EXPOSITION AUX RAYONS.

LUOKAN 1 LASERLAITE LASER KLASSE 1

VORSICHT: UNSICHTBARE LASERSTRAHLUNG, WENN ABDECKUNG GEÖFFNET NICHT DEM STRAHLL AUSSETZEN

PRODUCTO LÁSER DE LA CLASE I

ADVERTENCIA: RADIACIÓN LÁSER INVISIBLE AL SER ABIERTO. EVITE EXPONERSE A LOS RAYOS.

ADVARSEL: LASERSTRÅLING VEDÅBNING SE IKKE IND I STRÅLEN.

VARO! LAVATTAESSA OLET ALTTINA LASERSÄTEILYLLE.

WARNING: LASERSTRÅLNING NÅR DENNA DEL ÅR ÖPPNAD ÅLÅ TUIJOTA SÄTEESEENSTIRRA EJ IN I STRÅLEN

WARNING: LASERSTRÅLNING NAR DENNA DEL ÅR ÖPPNADSTIRRA EJ IN I STRÅLEN

ADVARSEL: LASERSTRÅLING NAR DEKSEL ÅPNESSTIRR IKKE INN I STRÅLEN

Telephone line safety

- Disconnect all telephone lines from the equipment when not in use and/or before servicing.
- To avoid the remote risk of electric shock from lightning, do not connect the telephone line to this equipment during lightning or thunderstorms.

Emergency calls



Warning

You cannot make emergency calls through this device. To make an emergency call you shall dial out through your mobile phone or other telephone call system.

Medical devices

Operation of any radio transmitting equipment, including wireless phones, may interfere with the functionality of inadequately protected medical devices. Consult a physician or the manufacturer of the medical device to determine if they are adequately shielded from external RF energy or if you have any questions. Switch off your device in health care facilities when any regulations posted in these areas instruct you to do so. Hospitals or health care facilities may be using equipment that could be sensitive to external RF transmissions.

Pacemakers. Pacemaker manufacturers recommend that a minimum separation of 15.3 centimeters (6 inches) be maintained between wireless devices and a pacemaker to avoid potential interference with the pacemaker. These recommendations are consistent with the independent research by and recommendations of Wireless Technology Research. Persons with pacemakers should do the following:

- Always keep the device more than 15.3 centimeters (6 inches) from the pacemaker
- Not carry the device near your pacemaker when the device is switched on. If you suspect interference, switch off your device, and move it.

Hearing aids. Some digital wireless devices may interfere with some hearing aids. If interference occurs, consult your service provider.

Vehicles

RF signals may affect improperly installed or inadequately shielded electronic systems in motor vehicles such as electronic fuel injection systems, electronic antiskid (anti-lock) braking systems, electronic speed control systems, and air bag systems. For more information, check with the manufacturer, or its representative, of your vehicle or any equipment that has been added. Only qualified personnel should service the device, or install the device in a vehicle. Faulty installation or service may be dangerous and may invalidate any warranty that may apply to the device. Check regularly that all wireless equipment in your vehicle is mounted and operating properly. Do not store or carry flammable liquids, gases, or explosive materials in the same compartment as the device, its parts, or enhancements. For vehicles equipped with an air bag, remember that air bags inflate with great force. Do not place objects, including installed or portable wireless equipment in the area over the air bag or in the air bag deployment area. If in-vehicle wireless equipment is improperly installed, and the air bag inflates, serious injury could result. Using your device while flying in aircraft is prohibited. Switch off your device before boarding an aircraft. The use of wireless teledevices in an aircraft may be dangerous to the operation of the aircraft, disrupt the wireless telephone network, and may be illegal.

Potentially explosive environments



Warning

Do not operate a portable transmitter (including this wireless adapter) near unshielded blasting caps or in an explosive environment unless the transmitter has been modified to be qualified for such use.

Switch off your device when in any area with a potentially explosive atmosphere and obey all signs and instructions. Potentially explosive atmospheres include areas where you would normally be advised to turn off your vehicle engine. Sparks in such areas could cause an explosion or fire resulting in bodily injury or even death. Switch off the

device at refueling points such as near gas pumps at service stations. Observe restrictions on the use of radio equipment in fuel depots, storage, and distribution areas; chemical plants; or where blasting operations are in progress.

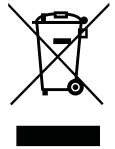
Areas with a potentially explosive atmosphere are often, but not always, clearly marked. They include below deck on boats, chemical transfer or storage facilities, vehicles using liquefied petroleum gas (such as propane or butane), and areas where the air contains chemicals or particles such as grain, dust or metal powders.

Do not switch the notebook on when wireless phone use is prohibited or when it may cause interference or danger.

Disposal instructions

Do not throw this electronic device into the trash when discarding. To minimize pollution and ensure utmost protection of the global environment, please recycle. For more information on the Waste from Electrical and Electronics Equipment (WEEE) regulations, visit

www.acer-group.com/public/Sustainability



ENERGY STAR



Acer's ENERGY STAR qualified products save your money by reducing energy cost and protecting the environment without sacrificing features or performance. Acer is proud to offer our customers products with the ENERGY STAR mark.

What is ENERGY STAR?

Products that are ENERGY STAR qualified use less energy and prevent greenhouse gas emissions by meeting strict energy efficiency guidelines set by the U.S. Environmental Protection Agency. Acer is committed to offering products and services worldwide that help customers save money, conserve energy and improve the quality of our environment. The more energy we can save through higher energy efficiency, the more we reduce greenhouse gases and the risks of climate change. More information refers to **www.energystar.gov** or **www.energystar.gov/powermanagement**.



Note

Information in this section may not apply to your computer.

Acer ENERGY STAR qualified products:

- Produce less heat and reduce cooling loads, and warmer climates.
- Automatically go into "display sleep" and "computer sleep" mode after 10 and 30 minutes of inactivity respectively.
- Wake the computer from sleep mode by pushing keyboard or moving mouse.
- Computers will save more than 80% energy at "sleep" mode.

ENERGY STAR and the ENERGY STAR mark are registered U.S. marks

Wireless adapter regulatory information

Radio frequency interference



Warning

For safety reasons, turn off all wireless or radio transmitting devices when using your laptop under the following conditions. These devices may include, but are not limited to: wireless LAN (WLAN), Bluetooth and/or 3G.

Remember to follow any special regulations in force in any area, and always switch off your device when its use is prohibited or when it may cause interference or danger. Use the device only in its normal operating positions. This device meets RF exposure guidelines when used normally. To successfully transmit data files or messages, this device requires a good quality connection to the network. In some cases, transmission of data files or messages may be delayed until such a connection is available. Parts of the device are magnetic. Metallic materials may be attracted to the device, and persons with hearing aids should not hold the device to the ear with the hearing aid. Do not place credit cards or other magnetic storage media near the device, because information stored on them may be erased.

Use on aircraft



Warning

FCC and FAA regulations may prohibit airborne operation of radio-frequency wireless devices (wireless adapters) because their signals could interfere with critical aircraft instruments. Ask the cabin crew before turning on your device's wireless adapter whilst on board.

The wireless adapter and your health

The wireless adapter, like other radio devices, emits radio frequency electromagnetic energy. The level of energy emitted by the wireless adapter, however, is less than the electromagnetic energy emitted by other wireless devices such as mobile phones. The wireless adapter operates within the guidelines found in radio frequency safety standards and recommendations. These standards and recommendations reflect the consensus of the scientific community and result from deliberations of panels and committees of scientists who continually review and interpret the extensive research literature. In some situations or environments, the use of the wireless adapter may be restricted by the proprietor of the building or responsible representatives of the applicable organization. Examples of such situations may include:

- Using the wireless adapter on board airplanes, or
- Using the wireless adapter in any other environment where the risk of interference with other devices or services is perceived or identified as being harmful.

If you are uncertain of the policy that applies to the use of wireless adapters in a specific organization or environment (an airport, for example), you are encouraged to ask for authorization to use the adapter before you turn it on.

USA — FCC and FAA

The FCC with its action in ET Docket 96-8 has adopted a safety standard for human exposure to radio frequency (RF) electromagnetic energy emitted by FCC certified equipment. The wireless adapter meets the Human Exposure limits found in OET Bulletin 65,

supplement C, 2001, and ANSI/IEEE C95.1, 1992. Proper operation of this radio according to the instructions found in this manual will result in exposure substantially below the FCC's recommended limits.

- The following safety precautions should be observed:
 - Do not touch or move antenna while the unit is transmitting or receiving.
- Do not hold any component containing the radio such that the antenna is very close or touching any exposed parts of the body, especially the face or eyes, while transmitting.
- Do not operate the radio or attempt to transmit data unless the antenna is connected; this behavior may cause damage to the radio.
- The use of wireless adapters in hazardous locations is limited by the constraints posed by the safety directors of such environments.
- The use of wireless adapters on airplanes is governed by the Federal Aviation Administration (FAA).
- The use of wireless adapters in hospitals is restricted to the limits set forth by each hospital.

FCC radio frequency interference requirements



Note

Applies to device supporting IEEE 802.11a wireless adapters.

This device is restricted to indoor use due to its operation in the 5.15 to 5.25 GHz and 5.470 to 5.725 GHz frequency ranges. FCC requires this product to be used indoors for the frequency ranges 5.15 to 5.25 GHz and 5.470 to 5.725 GHz to reduce the potential for harmful interference to co-channel mobile satellite systems. High power radars are allocated as primary users of the 5.25 to 5.35 GHz and 5.65 to 5.85 GHz bands. These radar stations can cause interference with and /or damage this device. No configuration controls are provided for this wireless adapter allowing any change in the frequency of operations outside the FCC grant of authorization for U.S operation according to Part 15.407 of the FCC rules.

USA — Federal Communications Commission (FCC)



Note

The radiated output power of the adapter is far below the FCC radio frequency exposure limits. Nevertheless, the adapter should be used in such a manner that the potential for human contact during normal operation is minimized. To avoid the possibility of exceeding the FCC radio frequency exposure limits, you should keep a distance of at least 20 cm between you (or any other person in the vicinity), or the minimum separation distance as specified by the FCC grant conditions, and the antenna that is built into the computer. Details of the authorized configurations can be found at www.fcc.gov/oet/ea/ by entering the FCC ID number on the device.

This device complies with Part 15 of the FCC Rules. Operation of the device is subject to the following two conditions:

- This device may not cause harmful interference.
- This device must accept any interference that may cause undesired operation.

Interference statement

This wireless adapter has been tested and found to comply with the limits for a Class B digital device, pursuant to Part 15 of the FCC Rules. These limits are designed to provide reasonable protection against harmful interference in a residential installation. This wireless adapter generates, uses, and can radiate radio frequency energy. If the wireless adapter is not installed and used in accordance with the instructions, the wireless adapter may cause harmful interference to radio communications. There is no guarantee, however, that such interference will not occur in a particular installation. If this wireless adapter does cause harmful interference to radio or television reception (which can be determined by turning the equipment off and on), the user is encouraged to try to correct the interference by taking one or more of the following measures:

- Reorient or relocate the receiving antenna of the equipment experiencing the interference.
- Increase the distance between the wireless adapter and the equipment experiencing the interference.

- Connect the computer with the wireless adapter to an outlet on a circuit different from that to which the equipment experiencing the interference is connected.
- Consult the dealer or an experienced radio/TV technician for help.

Canada — Industry Canada (IC)

This device complies with RSS210 of Industry Canada. Cet appareil se conforme à RSS210 de Canada d'Industrie.

European Union

List of applicable countries

This product must be used in strict accordance with the regulations and constraints in the country of use. For further information, contact the local office in the country of use. Please see <http://ec.europa.eu/enterprise/rtte/implement.htm> for the latest country list.

List of national codes

This equipment may be operated in the following countries:

Country	ISO 3166 2 letter code	Country	ISO 3166 2 letter code
Austria	AT	Malta	MT
Belgium	BE	Netherlands	NL
Cyprus	CY	Poland	PL
Czech Republic	CZ	Portugal	PT
Denmark	DK	Slovakia	SK
Estonia	EE	Slovenia	SI
Finland	FI	Spain	ES
France	FR	Sweden	SE
Germany	DE	United Kingdom	GB
Greece	GR	Iceland	IS
Hungary	HU	Liechtenstein	LI
Ireland	IE	Norway	NO
Italy	IT	Switzerland	CH
Latvia	LV	Bulgaria	BG

Country	ISO 3166 2 letter code	Country	ISO 3166 2 letter code
Lithuania	LT	Romania	RO
Luxembourg	LU	Turkey	TR

Specific absorption rate information

This device meets the EU requirements on the limitation of exposure of the general public to electromagnetic fields by way of health protection.

The limits are part of extensive recommendations for the protection of the general public. These recommendations have been developed and checked by independent scientific organizations through regular and thorough evaluations of scientific studies. The unit of measurement for the European Council's recommended limit for mobile devices is the "Specific Absorption Rate" (SAR), and the SAR limit is 2.0 W/kg averaged over 10 grams of body tissue. It meets the requirements of the International Commission on Non-Ionizing Radiation Protection (ICNIRP).

For body worn operation, this device has been tested and meets the ICNIRP exposure guidelines and the European Standard, for use with dedicated accessories. Use of other accessories which contain metals may not ensure compliance with ICNIRP exposure guidelines.

The low band 5.15 to 5.35 GHz is for indoor use only.

This equipment complies with the essential requirements of the European Union directive 1999/5/EC. See Statements of European Union Compliance, and more details refer to the attached Declaration of Conformity.

English	Hereby, ACER INC., declares that this device is in compliance with the essential requirements and other relevant provisions of Directive 1999/5/EC.
Česky [Czech]	ACER INC. tímto prohlašuje, že toto zařízení je ve shodě se základními požadavky a dalšími příslušnými ustanoveními směrnice 1999/5/ES.
Daansk [Danish]	Undertegnede ACER INC. erklærer herved, at følgende udstyr overholder de væsentlige krav og øvrige relevante krav i direktiv 1999/5/EF.

Deutsch [German]	Hiermit erklärt ACER INC., dass sich das Gerät Radiolan in Übereinstimmung mit den grundlegenden Anforderungen und den übrigen einschlägigen Bestimmungen der Richtlinie 1999/5/EG befindet.
Eesti [Estonian]	Käesolevaga kinnitab ACER INC. seadme vastavust direktiivi 1999/5/EÜ põhinõuetele ja nimetatud direktiivist tulenevatele teistele asjakohastele sätetele.
Español [Spanish]	Por medio de la presente ACER INC. declara que el dispositivo cumple con los requisitos esenciales y cualesquiera otras disposiciones aplicables o exigibles de la Directiva 1999/5/CE.
Ελληνικά [Greek]	Δια του παρόντος η ACER INC. δηλώνει ότι η παρούσα συσκευή συμμορφώνεται προς τις ουσιώδεις απαιτήσεις και τις λοιπές διατάξεις της Οδηγίας 1999/5/ ΕΚ.
Français [French]	Par la présente ACER INC. déclare que cet appareil est conforme aux exigences essentielles et aux autres dispositions pertinentes de la directive 1999/5/CE.
Íslenska [Icelandic]	Hér með lýsir ACER INC. yfir því að er í samræmi við grunnkröfur og aðrar kröfur, sem gerða r eru í tilskipun 1999/5/EC.
Italiano [Italian]	Con la presente ACER INC. dichiara che questo dispositivo è conforme ai requisiti essenziali ed alle altre disposizioni pertinenti stabilite dalla direttiva 1999/5/CE.
Latviski [Latvian]	Ar šo ACER INC. deklarē, ka šī ierīce atbilst Direktīvas 1999/5/EK būtiskajām prasībām un citiem ar to saistītajiem noteikumiem.
Lietuvių [Lithuanian]	Šiuo ACER INC. deklaruoja, kad šis įrenginys atitinka esminius reikalavimus ir kitas 1999/5/EB Direktyvos nuostatas.

Malti [Maltese]	Hawnhekk, ACER INC., jiddikjara li dan jikkonforma mal- ti ijjiet essenzjali u ma provvedimenti o rajn relevanti li he mm fid-Direttiva 1999/5/EC.
Magyar [Hungarian]	Alulírott, ACER INC. nyilatkozom, hogy a készülék megfelel a vonatkozó alapvető követelményeknek és az 1999/5/EC irányelv egyéb előírásainak.
Nederlands [Dutch]	Hierbij verklaart ACER INC. dat het toestel voldoet aan de essentiële eisen en de andere relevante bepalingen van richtlijn 1999/5/EG.
Norsk [Norwegian]	ACER INC. erklærer herved at utstyret er i samsvar med de grunnleggende krav og øvrige relevante krav i direktiv 1999/5/EF.
Polski [Polish]	Niniejszym ACER INC. oświadcza, że urządzenie jest zgodne z zasadniczymi wymogami oraz pozostałymi stosownymi postanowieniami Dyrektywy 1999/5/EC.
Português [Portuguese]	ACER INC. declara que este dispositivo está conforme com os requisitos essenciais e outras disposições da Directiva 1999/5/CE.
Slovensko [Slovenian]	ACER INC. izjavlja, da je ta naprava skladna z bistvenimi zahtevami in ostalimi relevantnimi določili Direktive 1999/5/ES.
Slovensky [Slovak]	ACER INC. týmto vyhlasuje, že zariadenie spĺňa základné požiadavky a všetky príslušné ustanovenia Smernice 1999/5/ES.
Suomi [Finnish]	ACER INC. vakuuttaa täten että tämä laite on direktiivin 1999/5/EY oleellisten vaatimusten ja sitä koskevienn direktiivin muiden ehtojen mukainen.
Svenska [Swedish]	Härmed intygar ACER INC. att denna enhet står i överensstämmelse med väsentliga egenskapskrav och övriga relevanta bestämmelser som framgår av direktiv 1999/5/EG.

France

Pour la France métropolitaine :

2,400 - 2,4835 GHz (Canaux 1 à 13) autorisé en usage intérieur

2,400 - 2,454 GHz (canaux 1 à 7) autorisé en usage extérieur

Pour la Guyane et la Réunion :

2,400 - 2,4835 GHz (Canaux 1 à 13) autorisé en usage intérieur

2,420 - 2,4835 GHz (canaux 5 à 13) autorisé en usage extérieur

Pour tout le territoire Français :

Seulement 5,15 -5,35 GHz autorisé pour le 802.11a

L'utilisation de cet équipement (2,4 GHz WLAN) est soumise à certaines restrictions :

- La puissance maximale autorisée en intérieur est de 100 mW pour 2400 - 2483,5 MHz.
- La puissance maximale autorisée est de 100 mW en extérieur pour 2400 - 2454 MHz.
- La puissance maximale autorisée est de 10 mW en extérieur, 2454 - 2483,5 MHz.

Pour les dernières restrictions, voir **www.art-telecom.fr**.

Italy

The use of this equipment is regulated by:

1. D.L.gs 1.8.2003, n. 259, article 104 (activity subject to general authorization) for outdoor use and article 105 (free use) for indoor use, in both cases for private use.
2. D.M. 28.5.03, for supply to public of RLAN access to networks and telecom services.

L'uso degli apparati è regolamentato da:

1. D.L.gs 1.8.2003, n. 259, articoli 104 (attività soggette ad autorizzazione generale) se utilizzati al di fuori del proprio fondo e 105 (libero uso) se utilizzati entro il proprio fondo, in entrambi i casi per uso private.
2. D.M. 28.5.03, per la fornitura al pubblico dell'accesso R-LAN alle reti e ai servizi di telecomunicazioni.

Belgium

Dans le cas d'une utilisation privée, à l'extérieur d'un bâtiment, au-dessus d'un espace public, aucun enregistrement n'est nécessaire pour une distance de moins de 300 m. Pour une distance supérieure à 300 m un enregistrement auprès de l'IBPT est requise. Pour les enregistrements et licences, veuillez contacter l'IBPT.

In geval van privé-gebruik, buiten een gebouw, op een openbare plaats, is geen registratie nodig, wanneer de afstand minder dan 300 m is. Voor een afstand groter dan 300 m is een registratie bij BIPT vereist. Voor registraties en licenties, gelieve BIPT te contacteren.

Brazil

Este equipamento opera em caráter secundário, isto é, não tem direito a proteção contra interferência prejudicial, mesmo de estações do mesmo tipo, e não pode causar interferência a sistemas operando em caráter primário.

Pakistan

Pakistan Telecommunication Authority (PTA) Approved.

Morocco

The operation of this product in the radio channel 2 (2417 MHz) is not authorized in the following cities: Agadir, Assa-Zag, Cabo Negro, Chaouen, Goulmima, Oujda, Tan Tan, Taourirt, Taroudant and Taza.

The operation of this product in the radio channels 4, 5, 6 and 7 (2425 - 2442 MHz) is not authorized in the following cities: Aéroport Mohamed V, Agadir, Aguelmous, Anza, Benslimane, Béni Hafida, Cabo Negro, Casablanca, Fès, Lakkab, Marrakech, Merchich, Mohammédia, Rabat, Salé, Tanger, Tan Tan, Taounate, Tit Mellil, Zag.

Japan

5 GHz 帯は室内でのみ使用のこと

Korea

당해 무선설비는 운용 중 전파혼신 가능성이 있음

Taiwan

第十二條

經型式認證合格之低功率射頻電機，非經許可，公司、商號或使用者均不得擅自變更頻率、加大功率或變更原設計之特性及功能。

第十四條

低功率射頻電機之使用不得影響飛航安全及干擾合法通信；經發現有干擾現象時，應立即停用，並改善至無干擾時方得繼續使用。

前項合法通信，指依電信法規定作業之無線通信。

低功率射頻電機須忍受合法通信或工業、科學及醫療用電波輻射性電機設備之干擾。

Modifications to the product

Acer cannot be held responsible for unauthorized modifications made by the user and the consequences thereof, which may alter the conformity of the product.

Compliant with Russian regulatory certification

