

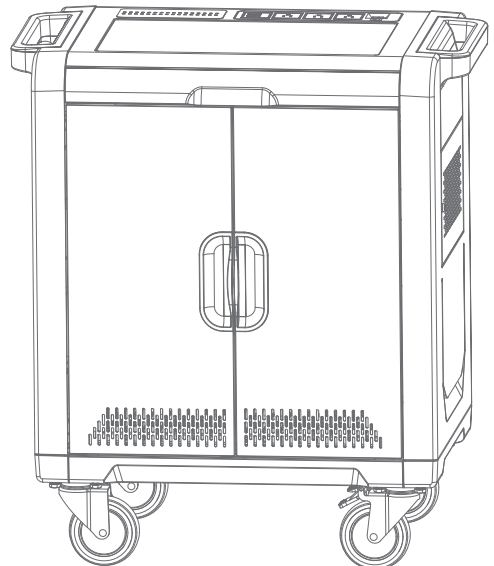
Rocstor® Volt® SC32 & SCL32 User Manual



General Use

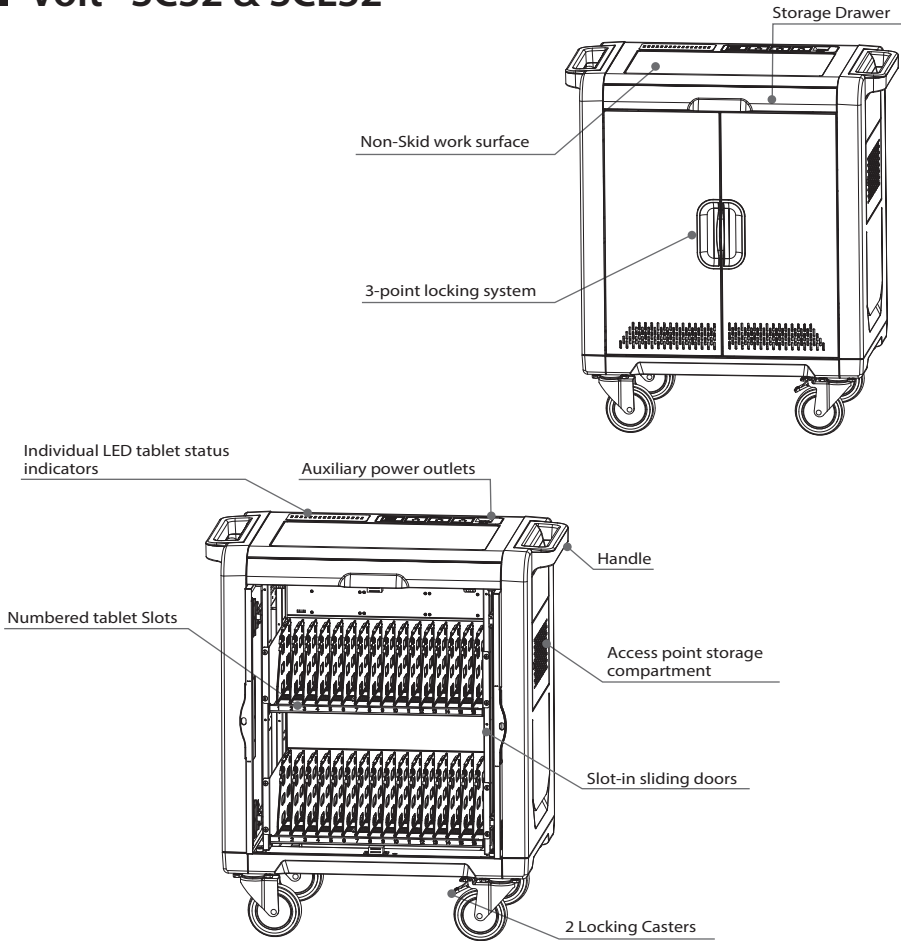
- This cart is designed to allow you to easily store, secure, charge, and sync up to 32 tablet devices.

1. Tablet Trolley Specifications _____	P.01
2. Package Contents _____	P.02
3. Tablet Cable Set-up For Charging and Syncing _____	P.02
4. Charging Set Up _____	P.03
5. Other Feature _____	P.04
6. Tablet Sync Set-Up _____	P.05
7. Use Safety _____	P.08



1. Tablet Trolley Specifications

■ Volt® SC32 & SCL32



Product SPEC

Model Name	Volt SC32 & SCL32	Container Load (20'/40')	48 / 106
Capacity	Up to 32 bay	LED indicator - Dual color	32
Max. tablet size	350 x 290 x 21 mm	External Power outlet	AC 100~120V, 50/60Hz, 4A AC 220~240V, 50/60Hz, 4A
Dim. with Packing	860 x 590 x 1120 mm	Power Rating	Input: AC 100~120V, 50/60Hz AC 220~240V, 50/60Hz DC: 5V, 2.4A for each USB port
N.W. / G.W.	65kgs / 77kgs	Option Item	1. FAN (DC 12V / 0.6A) 2. Combination padlock

2. Package Contents

Package Contents

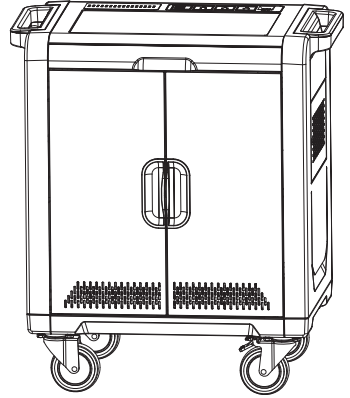
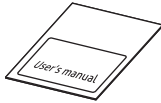
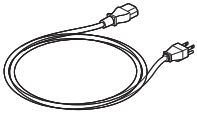
Cart x 1

Power Cable x 1

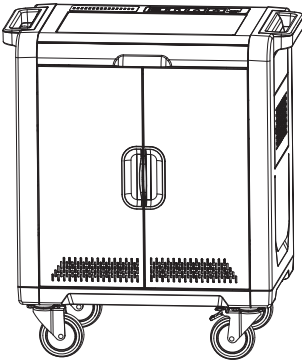
Sync Cable x 1

User manual x 1

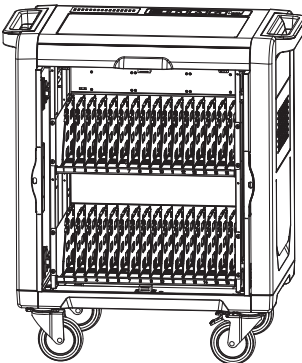
Window Key x 2



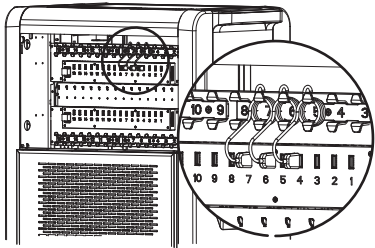
3. Tablet Cable Set-up For Charging and Syncing



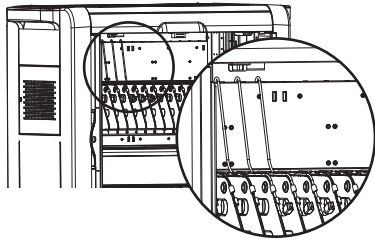
1. Before assembling cable management, please make sure the power cable is disconnected from the wall. Unlock the trolley and open the doors.



2. Line a USB connector cable along number 1 to 16 (around 175mm) on the drawer. Route the USB connector cable through the cable clips on the top of drawer to the back of the drawer. Leave the USB head on the back of the drawer.
3. Repeat USB cabling steps for the rest of the USB connector cables.



4. Turn to the back of the trolley, Wrap the excess USB cable around the cable organizer one by one. Connect the USB connector to PCBA module on

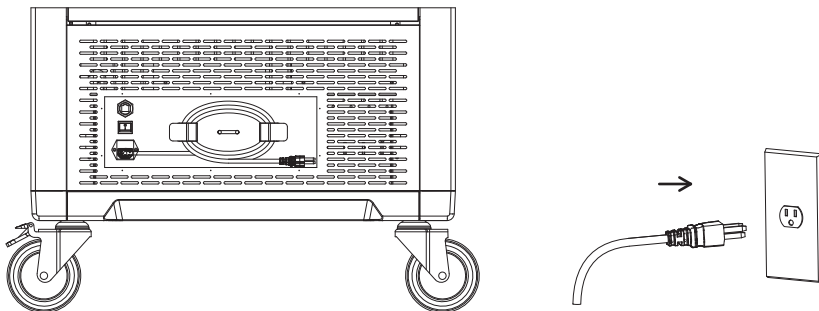


5. Put tablets into the drawers. Connect the USB charging cables to the tablets.

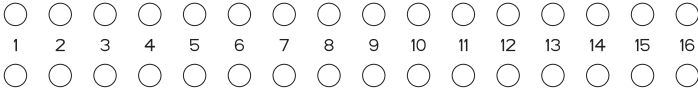
4. Charging Set-Up

The power cable is the connection between trolley-power and mains socket, to use trolley with ON/OFF-switch. When plug in and switch ON, the trolley will proceed the charging.

NOTE: the device will not charge and sync at the same time.



CH1



CH2

Charge status

LED indicator :

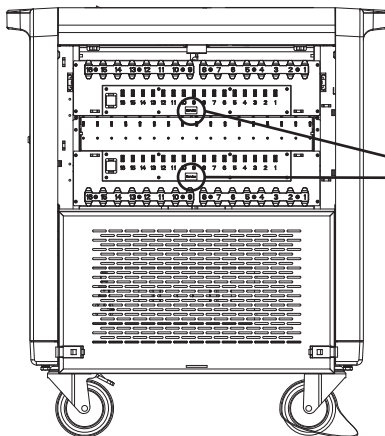
1 light for each device on the top of trolley, sequence numbered LEDs corresponding to each tablet in the channels.

Color Green = Fully Charged.

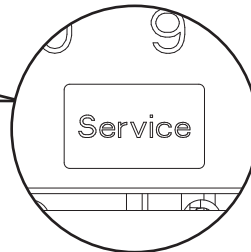
Color Red = Charging in progress.

Color Green/Red Flash = Sync in process.

5. Other Feature



Service only
Technical Maintenance staff use only



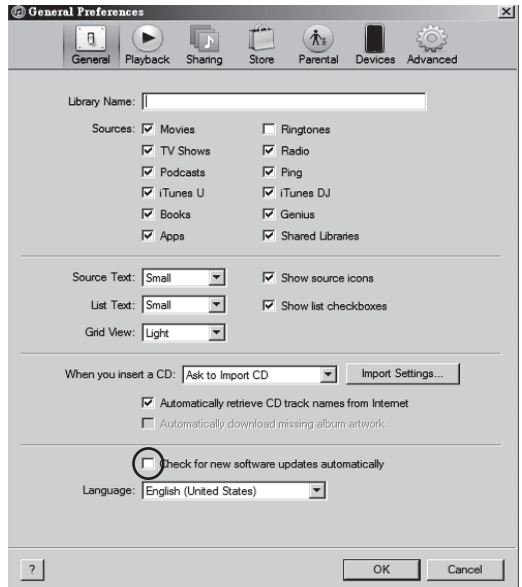
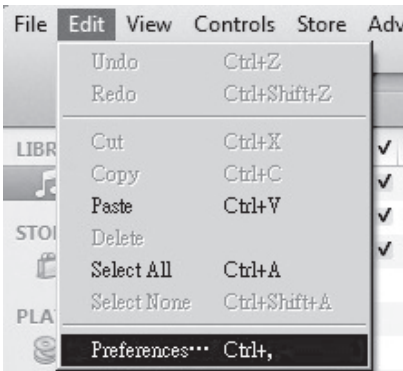
Charge board software update

6. Tablet Sync Set-Up

iTunes Setup

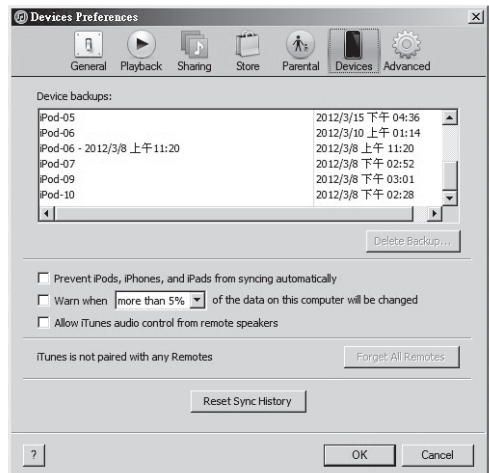
Here are a few settings that should be changed in iTunes to make it work best with the trolley and iPads.

1. Open the iTunes application on your master laptop. Select Preferences from the Edit menu. On the General pane, uncheck "Check for new software updates automatically". This keeps the automatic update process from interfering with the syncing process. You can still check for iOS updates by manually clicking on the Check for Updates button on the individual iPad screens. For more on iOS updates, see the iOS Update section below.



2. Next, click on the Device icon. Make sure none of the options are selected. The screen should look like this when complete. Click OK to save your changes.

3. Prepare your iTunes library by downloading the Apps, Books, Music, etc that you intend to copy to your iPads.



- 7..Click on each of the tabs at the top (Apps, Music, Movies, TV shows, Books, Photos) and select which type of files you will want to sync on this device. Click the Sync or Apply button.
- 8..Repeat Steps 2 – 7 with each iPad that will be used in this trolley.

Ready to Sync

- 1..When all the iPad devices have been configured, you are ready to charge and sync your tablets. Place each iPad in a slot in the trolley. Plug each device in using the 30-pin Apple connector connectors. Plug the trolley into a wall outlet.
- 2..If the iPad devices are new, they should be fully charged before attempting to sync.
- 3..When ready to sync, connect one end of the USB cable into the USB port near the auxiliary outlet and the other into a USB 2.0 port on your Mac or PC.
4. .iTunes will open and syncing will start automatically. Each iPad will be listed in iTunes under the Device list on the left hand side of the screen. You could review the sync status from master PC.

NOTE: Please keep in mind that identifying the devices and syncing will take time, so please be patient. The time is dependent on the number of iPads being synced and the amount of data being transferred. It can range from a few minutes to hours on 32 devices depends on different content. Please do not stop the process once it has been started.

- 5..When syncing is complete, the Eject symbol will appear next to each device. At this time it is safe to eject the device by clicking on the Eject symbol or closing iTunes.
- 6..When syncing is complete, unplug the USB Cable from your PC so charging can begin. Charging will not occur while the USB Cable is plugged into the master laptop.

iOS Updates

Due to the functionality of the iTunes software, iOS updates can not be done across the whole fleet of iPads at one time. This will need to be completed one unit at a time. It can still be done with the units plugged into the trolley. To update iOS on each iPad, select an iPad from under the Device list on the left side of the screen. Click on the Update button in the middle of the screen. Follow the prompts to complete the update. Updating time will vary depending on the size of the update from Apple. When one unit is complete, the next unit can be selected until all units have been updated.



7. Use Safety

WARNING :

This trolley must only be used for its intended purpose in accordance with these operating instructions. Failure to observe the following notices can result in fire, injury, death by electric shock or equipment damage.



ELECTRIC SHOCK
Operate Carefully

- Always turn OFF the power to the trolley before plugging IN or OUT.
- Make sure each devices is turned OFF before plugging into the trolley.
- Do not unplug this trolley from the outlet when your hands are wet.
- Do not use cables that are damaged.
- Do not unplug by pulling on the cable.
- Do not plug the cable into an extension cable.
- Keep the door closed and locked when in use.
- Disconnect the power cable from the wall before doors opening.
- Before moving this trolley from one room to the next, wrap the power cable around the winder located on the rear side of the trolley.



- The product can only be used in school, office or other similar places.
- This trolley is not designed to be operated by a child or student.
- Only Adult operation and supervision should move this trolley.
- Do not allow anyone to set, stand, or climb on the trolley.
- Move the trolley slowly.
- Keep the caster locked when the trolley is not in transit.
- Keep the trolley away from water.
- Keep the ventilation holes unblock for air circulation.
- Do not block the ventilation holes when charging.
- Do not pull the trolley. Push the trolley using the ergonomic handles to prevent muscle strain.
- Do not use TV or monitor on top of trolley.
- Do not use the trolley to store liquids or cleaning supplies.
- Keep the door closed and locked when in use.
- Disconnect the power cable from the wall before doors opening.

iPad Set-up

Before starting the syncing process, each individual iPad needs to be configured to work with iTunes and the Qubic correctly. This can be done by plugging each device into the master syncing laptop one unit at a time, or you can plug one unit in at a time within Qubic slot. To speed up the syncing process when syncing multiple devices, Apple suggests disabling automatic backups. This can be accomplished using Apple Terminal or a third party software.

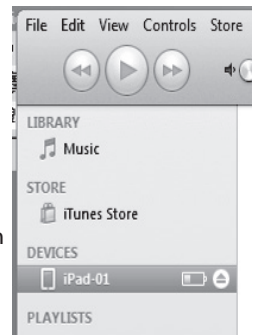
1. Set-up your master Laptop. Plug the power cord into the auxiliary outlet and the USB cable into the auxiliary USB plug. Plug the Qubic power cord into a wall outlet.
2. Select one iPad. We recommend setting your screen brightness at half level or less as the screen does stay on during syncing process. Go to Settings and select Brightness. Click Auto-Brightness so it turns to Off. Slide the brightness slide to left so it is positioned halfway between dim and bright.
3. Plug iPad connector into the USB slot.

NOTE: if connected to a PC, during this time drivers will be loading, so wait until you get the message that your device is ready to use before proceeding to step 4.

4. Open iTunes if it does not open automatically. Select your iPad from the Device table on the left side of the screen.
5. The iPad registration screen will come up. Follow the prompts to or create an Apple ID and name your iPad.
6. Click on the Summary tab. Select "Open iTunes when this iPad is connected" and "Sync only checked songs and videos". Verify "Manually manage music and videos" is not selected (this function would require you to drag and drop your selections in each iPad).
7. Click on each of the tabs at the top (Apps, Music, Movies, TV shows, Books, Photos) and select which type of files you will want to sync on this device. Click the Sync or Apply button.

8. Repeat Step 2 – 7 with each iPad that will be used in this product.

device
log in



rocstor®



LISTED
I.T.E.
E341990



Ver.1.1, Nov 2015

Rocstor

9445 De Soto Avenue
Chatsworth, CA
Tel: 1.818-727-7000
www.rocstor.com

