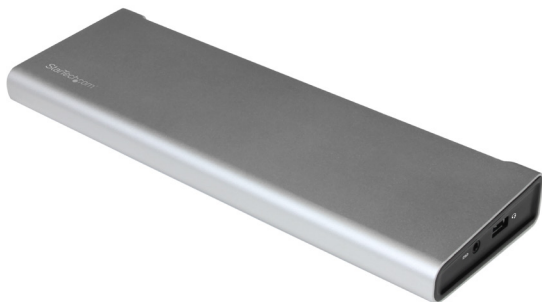


Thunderbolt 2 Dual-Video Docking Station - 2x DisplayPort

TB2DOCK4K2DP



*actual product may vary from photos

DE: Bedienungsanleitung - de.startech.com

FR: Guide de l'utilisateur - fr.startech.com

ES: Guía del usuario - es.startech.com

IT: Guida per l'uso - it.startech.com

NL: Gebruiksaanwijzing - nl.startech.com

PT: Guia do usuário - pt.startech.com

For the latest information, technical specifications, and support for this product, please visit www.startech.com/TB2DOCK4K2DP.

FCC Compliance Statement

This equipment has been tested and found to comply with the limits for a Class B digital device, pursuant to part 15 of the FCC Rules. These limits are designed to provide reasonable protection against harmful interference in a residential installation. This equipment generates, uses and can radiate radio frequency energy and, if not installed and used in accordance with the instructions, may cause harmful interference to radio communications. However, there is no guarantee that interference will not occur in a particular installation. If this equipment does cause harmful interference to radio or television reception, which can be determined by turning the equipment off and on, the user is encouraged to try to correct the interference by one or more of the following measures:

- Reorient or relocate the receiving antenna.
- Increase the separation between the equipment and receiver.
- Connect the equipment into an outlet on a circuit different from that to which the receiver is connected.
- Consult the dealer or an experienced radio/TV technician for help

This device complies with part 15 of the FCC Rules. Operation is subject to the following two conditions: (1) This device may not cause harmful interference, and (2) this device must accept any interference received, including interference that may cause undesired operation.

Changes or modifications not expressly approved by StarTech.com could void the user's authority to operate the equipment.

Industry Canada Statement

This Class B digital apparatus complies with Canadian ICES-003.

Cet appareil numérique de la classe [B] est conforme à la norme NMB-003 du Canada.

CAN ICES-3 (B)/NMB-3(B)

Use of Trademarks, Registered Trademarks, and other Protected Names and Symbols

This manual may make reference to trademarks, registered trademarks, and other protected names and/or symbols of third-party companies not related in any way to StarTech.com. Where they occur these references are for illustrative purposes only and do not represent an endorsement of a product or service by StarTech.com, or an endorsement of the product(s) to which this manual applies by the third-party company in question. Regardless of any direct acknowledgement elsewhere in the body of this document, StarTech.com hereby acknowledges that all trademarks, registered trademarks, service marks, and other protected names and/or symbols contained in this manual and related documents are the property of their respective holders.

Table of Contents

Introduction	1
Packaging contents.....	1
System requirements.....	1
Product diagram	2
Side view	2
Rear view.....	2
About USB 3.0 and USB 3.1 Gen 1	3
About installation	3
Install the docking station	3
About the docking station ports	4
Charge a device	4
Configure a display device	4
Supported video resolutions	5
Technical support	6
Warranty information	6

Introduction

Packaging contents

- 1x Thunderbolt™ 2 dual-video docking station
- 1x Thunderbolt cable
- 1x universal power adapter
- 4x power cords (NA/EU/UK/AU)
- 1x instruction manual

System requirements

- Thunderbolt enabled host computer with an available Thunderbolt port (Thunderbolt 2 port required for full performance)
- Available AC electrical outlet
- DisplayPort™ or Thunderbolt enabled display(s) with cables as desired (for additional external displays)
- A 4K-capable display is required to achieve 4K x 2K resolution (4K is also known as 4K x 2K)
- Windows® 10 (32-bit or 64-bit)
- Windows 8 / 8.1 (32-bit or 64-bit)
- Windows 7 (32-bit or 64-bit)
- Mac OS® 10.9 and later (tested up to 10.10)

Note: If you connect the docking station to a Thunderbolt host port, performance may be limited. A Thunderbolt 2 host port is highly recommended.

Operating system requirements are subject to change. For the latest requirements, please visit <http://www.startech.com/TB2DOCK4K2DP>

Product diagram

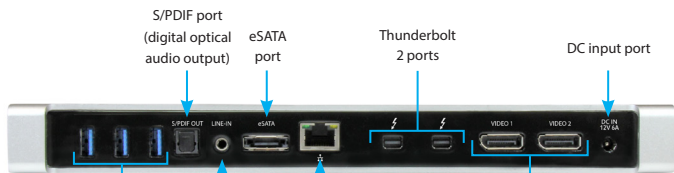
Side view



3.5mm TRRS
headset port
(audio and
microphone)

USB 3.0
fast-charge
and sync

Rear view



S/PDIF port
(digital optical
audio output)

eSATA
port

Thunderbolt
2 ports

DC input port

USB 3.0 ports

LINE-IN
3.5 line-in/
microphone
port (stereo)

Gigabit
RJ45 port

VIDEO 1
VIDEO 2
DisplayPort
video ports

About USB 3.0 and USB 3.1 Gen 1

USB 3.0 is also known as USB 3.1 Gen 1. This connectivity standard offers speeds up to 5Gbps. Any mention of USB 3.0 in this manual or the StarTech.com website for TB2DOCK4K2DP refers to the 5Gbps USB 3.1 Gen 1 standard.

About installation

The Thunderbolt 2 dual-video docking station is natively supported when connected to a computer with a compatible operating system (OS support listed above). The docking station should automatically install the required drivers when connected to your computer's Thunderbolt 2 port.

If you receive a prompt to automatically install the driver(s), follow the on-screen instructions to complete the installation.

The drivers can also be found under the **Support** tab on our website at <http://www.startech.com/TB2DOCK4K2DP>.

Install the docking station

1. Select the appropriate power cord for your region and connect it to the power adapter.
2. Connect the power adapter to an AC electrical outlet and then to the docking station's **DC IN** (power input) port.
3. Connect one of the docking station's Thunderbolt 2 ports to a Thunderbolt 2 port on your host computer, using the Thunderbolt cable provided.

Note: On computers running Windows, a pop-up message may appear requesting permission to allow the docking station to connect to your computer. Click on the message and on the following prompt select **Always Connect** from the drop-down menu.

4. Connect your external display(s) to the docking station's video port(s). The docking station features two DisplayPort and one Thunderbolt 2 port for external display connections.

Note: See the **Supported video resolutions** section below for supported display configurations and resolutions.

5. As necessary, connect any other devices to the docking station, including an RJ45 network connection, USB peripherals, an eSATA device, an S/PDIF digital optical audio device, a headset, etc.

About the docking station ports

The three USB ports located at the back of the docking station are standard USB 3.0 throughput ports. When the docking station is connected to a host laptop, these ports provide a trickle charge to a selection of devices.

The side USB 3.0 port is compliant with Battery Charging Specification Revision 1.2 (BC1.2), which means that you can use the port to connect and charge a device faster than a traditional standard USB 3.0 port.

This side USB 3.0 port can fast-charge a connected device even when the docking station isn't connected to a host laptop. When the docking station is connected to a host laptop, the front USB 3.0 port functions as a Charging Downstream Port (CDP), which has simultaneous charge and sync capabilities.

Charge a device

If you're only using the side USB 3.0 port to charge a device, a connection to a host laptop isn't required.

- To charge a device, connect it to the USB 3.0 port located on the side of the docking station.

Note: This side USB 3.0 port can only fast-charge connected devices that comply with USB Battery Charging Specification Revision 1.2.

Configure a display device

Use your Windows or Mac operating system to adjust display settings for multiple monitors.

- You can set up dual displays by using the video output ports (2x DisplayPort, or 1x DisplayPort + 1x Thunderbolt/MDP).
- You can set up dual displays using multiple Thunderbolt monitors in a daisy-chain configuration.

Note: Your laptop hardware must support dual external displays through its Thunderbolt 2 port.

A Thunderbolt daisy chain allows you to connect multiple Thunderbolt devices together, through a single Thunderbolt port on your host device.

Example: You can connect a Thunderbolt display to the dock's Thunderbolt port. You can then connect another Thunderbolt device, such as a second Thunderbolt display, through the first Thunderbolt display.

- Thunderbolt ports are compatible with Mini DisplayPort, and can be used to connect a Mini DisplayPort or DisplayPort enabled display.
- The docking station supports DisplayPort 1.2 monitors.

Supported video resolutions

The docking station supports 4K Ultra HD resolutions up to 3840 x 2160p if the connected DisplayPort or Thunderbolt display supports it.

- In a multi-display configuration, set the refresh rates on each of your connected monitors to the same values, otherwise your monitors may not properly display.

See the video resolution chart below for specific configurations and supported resolutions:

Video Output Configuration	Max DisplayPort Resolution (Video 1)	Max DisplayPort Resolution (Video 2)	Max Thunderbolt Resolution
DisplayPort 1 (Single display)	3840 x 2160p (4K)	N/A	N/A
DisplayPort 2 (Single display)	N/A	3840 x 2160p (4K)	N/A
Thunderbolt (Single display)	N/A	N/A	3840 x 2160p (4K)
DisplayPort 1 and DisplayPort 2 (Two displays)	2560 x 1600p	2560 x 1600p	N/A
DisplayPort and Thunderbolt (Two displays)	3840 x 2160p (4K)	N/A	Tested up to 3440 x 1440p
Thunderbolt daisy chain (Tested up to two displays)	N/A	N/A	Tested up to 3840 x 2160p (4K) + 2560 x 1440p

Note: Depending on the configuration and the supported resolutions of your connected monitor(s), the docking station may support video resolutions lower than specified above.

Technical support

StarTech.com's lifetime technical support is an integral part of our commitment to provide industry-leading solutions. If you ever need help with your product, visit www.startech.com/support and access our comprehensive selection of online tools, documentation, and downloads.

For the latest drivers/software, please visit www.startech.com/downloads

Warranty information

This product is backed by a two-year warranty.

StarTech.com warrants its products against defects in materials and workmanship for the periods noted, following the initial date of purchase. During this period, the products may be returned for repair, or replacement with equivalent products at our discretion. The warranty covers parts and labor costs only. StarTech.com does not warrant its products from defects or damages arising from misuse, abuse, alteration, or normal wear and tear.

Limitation of Liability

In no event shall the liability of StarTech.com Ltd. and StarTech.com USA LLP (or their officers, directors, employees or agents) for any damages (whether direct or indirect, special, punitive, incidental, consequential, or otherwise), loss of profits, loss of business, or any pecuniary loss, arising out of or related to the use of the product exceed the actual price paid for the product. Some states do not allow the exclusion or limitation of incidental or consequential damages. If such laws apply, the limitations or exclusions contained in this statement may not apply to you.

Hard-to-find made easy. At StarTech.com, that isn't a slogan. It's a promise.

StarTech.com is your one-stop source for every connectivity part you need. From the latest technology to legacy products — and all the parts that bridge the old and new — we can help you find the parts that connect your solutions.

We make it easy to locate the parts, and we quickly deliver them wherever they need to go. Just talk to one of our tech advisors or visit our website. You'll be connected to the products you need in no time.

Visit www.startech.com for complete information on all StarTech.com products and to access exclusive resources and time-saving tools.

StarTech.com is an ISO 9001 Registered manufacturer of connectivity and technology parts. StarTech.com was founded in 1985 and has operations in the United States, Canada, the United Kingdom and Taiwan servicing a worldwide market.