

# ideacentre All-In-One 700 Hardware Maintenance Manual

Machine Types: F0BE [700-24ISH/Energy Star]/F0BG  
[700-24AGR/Energy Star]/F0BD [700-27ISH / Energy Star]



# ideacentre All-In-One 700

## Hardware Maintenance Manual

Machine Types: F0BE [700–24ISH/Energy Star]/F0BG  
[700–24AGR/Energy Star]/F0BD [700-27ISH / Energy Star]

**First Edition (July 2015)20th**

**© Copyright Lenovo 2015.**

LIMITED AND RESTRICTED RIGHTS NOTICE: If data or software are delivered pursuant a General Services Administration "GSA" contract, use, reproduction, or disclosure is subject to restrictions set forth in Contract No. GS-35F-05925



---

# Contents

<b>Chapter 1. About this manual . . . . .</b>	<b>1</b>	<b>Chapter 8. Replacing hardware . . . . .</b>	<b>25</b>
Important Safety Information . . . . .	1	General information . . . . .	25
<b>Chapter 2. Safety information . . . . .</b>	<b>3</b>	Replacing the keyboard and mouse . . . . .	26
General safety . . . . .	3	Replacing the power cord . . . . .	26
Electrical safety . . . . .	3	Removing the stand base . . . . .	27
Safety inspection guide . . . . .	5	Removing the foot cover . . . . .	28
Handling electrostatic discharge-sensitive devices . . . . .	5	Replacing the memory module . . . . .	29
Grounding requirements . . . . .	6	Replacing the hard disk drive . . . . .	30
Safety notices . . . . .	6	Replacing the optical drive . . . . .	31
<b>Chapter 3. General information . . . . .</b>	<b>9</b>	Removing the stand holder . . . . .	33
Specifications . . . . .	9	Removing the middle cover . . . . .	33
<b>Chapter 4. General Checkout . . . . .</b>	<b>11</b>	Replacing the converter board . . . . .	35
<b>Chapter 5. Using the Setup Utility. . . . .</b>	<b>13</b>	Removing the EMI cover . . . . .	36
Starting the Lenovo BIOS Setup Utility program . . . . .	13	Replacing the Wi-Fi card . . . . .	37
Viewing and changing settings . . . . .	13	Replacing the heat-sink . . . . .	38
Using passwords. . . . .	13	Replacing an Intel CPU . . . . .	39
Enabling or disabling a device . . . . .	15	Replacing an AMD CPU . . . . .	41
Selecting a startup device . . . . .	16	Replacing the system fan . . . . .	44
Exiting the Lenovo BIOS Setup Utility program . . . . .	17	Replacing the speaker system . . . . .	45
<b>Chapter 6. Symptom-to-FRU Index . . . . .</b>	<b>19</b>	Replacing the power switch board . . . . .	46
Hard disk drive boot error . . . . .	19	Replacing the motherboard. . . . .	47
Power Supply Problems . . . . .	19	Removing the rear deco . . . . .	49
POST error codes . . . . .	20	Replacing the camera . . . . .	50
Undetermined problems . . . . .	20	Replacing the LCD panel module . . . . .	51
<b>Chapter 7. Hardware components . . . . .</b>	<b>21</b>	<b>Chapter 9. FRU lists . . . . .</b>	<b>55</b>
		<b>Chapter 10. General information . . . . .</b>	<b>71</b>
		Additional Service Information . . . . .	71



---

## Chapter 1. About this manual

This manual contains service and reference information for Lenovo AIO 700–24ISH and AIO 700–25AGR computers listed on the cover. It is intended only for trained servicers who are familiar with Lenovo computer products.

Before servicing a Lenovo product, be sure to read the Safety Information.

---

### Important Safety Information

Be sure to read all CAUTION and DANGER sections in this manual before following any of the instructions.

Veillez lire toutes les consignes de type DANGER et ATTENTION du présent document avant d'exécuter les instructions.

Lesen Sie unbedingt alle Hinweise vom Typ "ACHTUNG" oder "VORSICHT" in dieser Dokumentation, bevor Sie irgendwelche Vorgänge durchführen

Leggere le istruzioni introdotte da ATTENZIONE e PERICOLO presenti nel manuale prima di eseguire una qualsiasi delle istruzioni

Certifique-se de ler todas as instruções de cuidado e perigo neste manual antes de executar qualquer uma das instruções

Es importante que lea todas las declaraciones de precaución y de peligro de este manual antes de seguir las instrucciones.

执行任何说明之前，请确保已阅读本书中的所有警告和危险声明。

執行任何指示前，請確實閱讀本書中的所有警告及危險聲明。



---

## Chapter 2. Safety information

This chapter contains the safety information that you need to be familiar with before servicing a computer.

---

### General safety

Follow these rules to ensure general safety:

- Keep the areas around the computer clear and clean during and after maintenance.
- When lifting any heavy object:
  1. Ensure you can stand safely without slipping.
  2. Distribute the weight of the object equally across both feet.
  3. Lift slowly. Never move suddenly or twist when you attempt to lift.
  4. Lift by standing or by pushing up with your leg muscles; this action removes the strain from the muscles in your back.  
*Do not attempt to lift any objects that weigh more than 16 kg (35 lb) or objects that you think are too heavy for you.*
- Do not perform any action that would create a hazard for the customer, or would make the computer unsafe.
- Before you start the computer, ensure that other service representatives and customer personnel are not in a position that would create a hazard for them.
- Place removed covers and other parts in a safe place, away from all personnel, while you are servicing the computer.
- Keep your tool case away from areas that people may walk through to ensure no-one trips over it.
- Do not wear loose clothing that can be trapped in the moving parts of a machine. Ensure that your sleeves are fastened or rolled up above your elbows. If your hair is long, tie or fasten it back.
- Insert the ends of your necktie or scarf inside clothing or fasten it with a non-conductive clip, approximately 8 centimeters (3 inches) from the end.
- Do not wear jewelry, chains, metal-frame eyeglasses, or metal fasteners for your clothing.  
**Remember:** Metal objects are good electrical conductors.
- Wear safety glasses when you are: hammering, drilling soldering, cutting wire, attaching springs, using solvents, or working in any other conditions that might be hazardous to your eyes.
- After service, reinstall all safety shields, guards, labels, and ground wires. Replace any safety device that is worn or defective.
- Reattach all covers correctly before returning the computer to the customer.

---

### Electrical safety



#### CAUTION:

**Electrical current from power, telephone, and communication cables can be hazardous. To avoid personal injury or equipment damage, disconnect any attached power cords, telecommunication cables, network cables, and modem cables before you open the computer covers, unless instructed otherwise in the installation and configuration procedures.**

Observe the following rules when working on electrical equipment.

**Important:** Use only approved tools and test equipment. Some hand tools have handles covered with a soft material that does not insulate you when working with live electrical currents. Many customers have rubber floor mats near their equipment that contain small conductive fibers to decrease electrostatic discharge.

- Find the room emergency power-off (EPO) switch, disconnecting switch, or electrical outlet. If an electrical accident occurs, you can then operate the switch or unplug the power cord quickly.
- Do not work alone under hazardous conditions or near equipment that has hazardous voltages.
- Disconnect all power before:
  - Performing a mechanical inspection
  - Working near power supplies
  - Removing or installing Field Replaceable Units (FRUs)
- Before you start to work on the computer, unplug the power cord. If you cannot unplug it, ask the customer to power-off the electrical outlet that supplies power to the machine and to lock the electrical outlet in the off position.
- If you need to work on a computer that has exposed electrical circuits, observe the following precautions:
  - Ensure that another person, familiar with the power-off controls, is near you.  
**Remember:** Another person must be there to switch off the power, if necessary.
  - Use only one hand when working with powered-on electrical equipment; keep the other hand in your pocket or behind your back.  
**Remember:** There must be a complete circuit to cause electrical shock. By observing the above rule, you may prevent a current from passing through your body.
  - When using a tester, set the controls correctly and use the approved probe leads and accessories for that tester.
  - Stand on suitable rubber mats (obtained locally, if necessary) to insulate you from grounds such as metal floor strips and machine frames.

Observe the special safety precautions when you work with very high voltages; these instructions are in the safety sections of the maintenance information. Use extreme care when measuring high voltages.

- Regularly inspect and maintain your electrical hand tools to ensure they are safe to use.
- Do not use worn or broken tools and testers.
- *Never assume* that power has been disconnected from a circuit. First, *check* that it has been powered off.
- Always look carefully for possible hazards in your work area. Examples of these hazards are wet floors, non-grounded power extension cables, conditions that may cause or allow power surges, and missing safety grounds.
- Do not touch live electrical circuits with the reflective surface of a plastic dental mirror. This surface is conductive, and touching a live circuit can cause personal injury and damage to the computer.
- Do not service the following parts with the power on when they are removed from their normal operating positions in a computer:
  - Power supply units
  - Pumps
  - Blowers and fans
  - Motor generators

and similar units. (This practice ensures correct grounding of the units.)

- If an electrical accident occurs:
  - Use caution; do not become a victim yourself.

- Switch off power.
- Send another person to get medical aid.

---

## Safety inspection guide

The intent of this inspection guide is to assist you in identifying potential hazards posed by these products. Each computer, as it was designed and built, had required safety items installed to protect users and service personnel from injury. This guide addresses only those items. However, good judgment should be used to identify potential safety hazards due to attachment of features or options not covered by this inspection guide.

If any hazards are present, you must determine how serious the apparent hazard could be and whether you can continue without first resolving the problem.

Consider the following items and the safety hazards they present:

- Electrical hazards, especially primary power (primary voltage on the frame can cause serious or fatal electrical shock).
- Explosive hazards, such as a damaged CRT face or bulging capacitor
- Mechanical hazards, such as loose or missing hardware

The guide consists of a series of steps presented as a checklist. Begin the checks with the power off, and the power cord disconnected.

Checklist:

1. Check exterior covers for damage (loose, broken, or sharp edges).
2. Power-off the computer. Disconnect the power cord.
3. Check the power cord for:
  - a. A third-wire ground connector in good condition. Use a meter to measure third-wire ground continuity for 0.1 ohm or less between the external ground pin and frame ground.
  - b. The power cord should be the appropriate type as specified in the parts listings.
  - c. Insulation must not be frayed or worn.
4. Remove the cover.
5. Check for any obvious alterations. Use good judgment as to the safety of any alterations.
6. Check inside the unit for any obvious hazards, such as metal filings, contamination, water or other liquids, or signs of fire or smoke damage.
7. Check for worn, frayed, or pinched cables.
8. Check that the power-supply cover fasteners (screws or rivets) have not been removed or tampered with.

---

## Handling electrostatic discharge-sensitive devices

Any computer part containing transistors or integrated circuits (ICs) should be considered sensitive to electrostatic discharge (ESD). ESD damage can occur when there is a difference in charge between objects. Protect against ESD damage by equalizing the charge so that the computer, the part, the work mat, and the person handling the part are all at the same charge.

**Notes:**

1. Use product-specific ESD procedures when they exceed the requirements noted here.
2. Make sure that the ESD protective devices you use have been certified (ISO 9000) as fully effective.

When handling ESD-sensitive parts:

- Keep the parts in protective packages until they are inserted into the product.
- Avoid contact with other people while handling the part.
- Wear a grounded wrist strap against your skin to eliminate static on your body.
- Prevent the part from touching your clothing. Most clothing is insulative and retains a charge even when you are wearing a wrist strap.
- Use the black side of a grounded work mat to provide a static-free work surface. The mat is especially useful when handling ESD-sensitive devices.
- Select a grounding system, such as those listed below, to provide protection that meets the specific service requirement.

**Note:** The use of a grounding system is desirable but not required to protect against ESD damage.

- Attach the ESD ground clip to any frame ground, ground braid, or green-wire ground.
- Use an ESD common ground or reference point when working on a double-insulated or battery-operated system. You can use coax or connector-outside shells on these systems.
- Use the round ground-prong of the AC plug on AC-operated computers.

---

## Grounding requirements

Electrical grounding of the computer is required for operator safety and correct system function. Proper grounding of the electrical outlet can be verified by a certified electrician.

---

## Safety notices

The CAUTION and DANGER safety notices in this section are provided in the language of English.



### DANGER

Electrical current from power, telephone and communication cables is hazardous.

#### To avoid a shock hazard:

- **Do not connect or disconnect any cables or perform installation, maintenance, or reconfiguration of this product during an electrical storm.**
- **Connect all power cords to a properly wired and grounded electrical outlet.**
- **Connect any equipment that will be attached to this product to a properly wired outlet.**
- **When possible, use one hand only to connect or disconnect signal cables.**
- **Never turn on any equipment when there is evidence of fire, water, or structural damage.**
- **Disconnect the attached power cords, telecommunications cables, network cables, and modem cables before you open the device covers, unless instructed otherwise in the installation and configuration procedures.**
- **Connect and disconnect cables as described in the following table when installing, moving, or opening covers on this product or attached devices.**



To Connect	To Disconnect
<ol style="list-style-type: none"> <li>1. Turn everything OFF.</li> <li>2. First, attach all cables to devices.</li> <li>3. Attach signal cables to connectors.</li> <li>4. Attach power cords to outlet.</li> <li>5. Turn device ON.</li> </ol>	<ol style="list-style-type: none"> <li>1. Turn everything OFF.</li> <li>2. First, remove power cords from outlets.</li> <li>3. Remove signal cables from connectors.</li> <li>4. Remove all cables from devices.</li> </ol>



**CAUTION:**

When replacing the lithium battery, use only Part Number 45C1566 or an equivalent type battery recommended by the manufacturer. If your system has a module containing a lithium battery, replace it only with the same module type made by the same manufacturer. The battery contains lithium and can explode if not properly used, handled, or disposed of.

*Do not:*

- Throw into or immerse in water
- Heat to more than 100°C (212°F)
- Repair or disassemble

Dispose of the battery as required by local ordinances or regulations.



**CAUTION:**

When laser products (such as CD-ROMs, DVD-ROM drives, fiber optic devices, or transmitters) are installed, note the following:

- Do not remove the covers. Removing the covers of the laser product could result in exposure to hazardous laser radiation. There are no serviceable parts inside the device.
- Use of controls or adjustments or performance of procedures other than those specified herein might result in hazardous radiation exposure.






**DANGER**

Some laser products contain an embedded Class 3A or Class 3B laser diode. Note the following:

These diodes emit radiation when open. Do not stare into the beam, do not view directly with optical instruments, and avoid direct exposure to the beam.

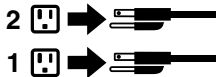


		
≥18 kg (37 lbs)	≥32 kg (70.5 lbs)	≥55 kg (121.2 lbs)

**CAUTION:**  
Use safe practices when lifting.



**CAUTION:**  
The power control button on the device and the power switch on the power supply do not turn off the electrical current supplied to the device. The device also might have more than one power cord. To remove all electrical current from the device, ensure that all power cords are disconnected from the power source.



**CAUTION:**  
Do not place any object weighing more than 82 kg (180 lbs.) on top of rack-mounted devices.



---

## Chapter 3. General information

This chapter provides general information that applies to all computer models covered by this manual.

---

### Specifications

This section lists the physical specifications for your computer.

**This section lists the physical specifications for your computer.**

This section lists the physical specifications.

#### Environment

Air temperature:

Operating: 10° to 35°C

Transit: -20° to 55°C

Humidity:

Operating: 35% to 80%

Transit: 20% to 90% (40°C)

Altitude: 86KPa to 106KPa

Electrical input:

Input voltage: 90V-264V(AC)

Input frequency: 47Hz-63Hz



---

## Chapter 4. General Checkout

**Attention:** The drives in the computer you are servicing might have been rearranged or the drive startup sequence may have been changed. Be extremely careful during write operations such as copying, saving, or formatting. Data or programs can be overwritten if you select an incorrect drive.

General error messages appear if a problem or conflict is found by an application, the operating system, or both. For an explanation of these messages, refer to the information supplied with that software package.

Use the following procedure to help determine the cause of the problem:

1. Power-off the computer and all external devices.
2. Check all cables and power cords.
3. Set all display controls to the middle position.
4. Power-on all external devices.
5. Power-on the computer.
  - Look for displayed error codes.
  - Look for readable instructions or a main menu on the display.

If you did not receive the correct response, proceed to step 6.

If you did receive the correct response, proceed to step 7.

6. If one of the following happens, follow the instruction given:
  - If the computer displays a POST error, go to “POST error codes”.
  - If the computer hangs and no error is displayed, continue at step 7.
7. If the test stops and you cannot continue, replace the last device tested.



---

## Chapter 5. Using the Setup Utility

The Setup Utility program is used to view and change the configuration settings of your computer, regardless of which operating system you are using. However, the operating system settings might override any similar settings in the Setup Utility program.

---

### Starting the Lenovo BIOS Setup Utility program

To start the Lenovo BIOS Setup Utility program, do the following:

1. If your computer is already on when you start this procedure, shut down the operating system and turn off the computer.
2. Press and hold the **F1** key, and then turn on the computer. When the Lenovo BIOS Setup Utility program is displayed, release the **F1** key.

**Note:** If a Power-On Password or an Administrator Password has been set, the Setup Utility program menu will not be displayed until you type your password. For more information, see “Using passwords.”

---

### Viewing and changing settings

System configuration options are listed in the Lenovo BIOS Setup Utility program menu. To view or change settings, see “Starting the Setup Utility program.”

You must use the keyboard when using the Lenovo BIOS Setup Utility menu. The keys used to perform various tasks are displayed on the bottom of each screen.

---

### Using passwords

You can use the Lenovo BIOS Setup Utility program to set passwords to prevent unauthorized persons from gaining access to your computer and data. See “Starting the Setup Utility program.” The following types of passwords are available:

- Administrator Password
- Power-On Password

You do not have to set any passwords to use your computer. However, if you decide to set passwords, read the following sections.

#### Password considerations

A password can be any combination of letters and numbers up to 16 characters (a-z and 0-9). For security reasons, it is a good idea to use a strong password that cannot be easily compromised. We suggest that passwords should follow these rules:

- For a strong password, use 7-16 characters and a mix of letters and numbers.
- Do not use your name or your user name.
- Do not use a common word or a common name.
- Use something significantly different from your previous password.

**Attention:** Administrator and Power-On passwords are not case sensitive.

## Administrator Password

Setting an Administrator Password deters unauthorized persons from changing configuration settings. You might want to set an Administrator Password if you are responsible for maintaining the settings of several computers.

After you set an Administrator Password, a password prompt is displayed every time you access the Lenovo BIOS Setup Utility program.

If both the Administrator and Power-On Password are set, you can type either password. However, you must use your Administrator Password to change any configuration settings.

### Setting, changing, or deleting an Administrator password

To set an Administrator Password, do the following:

**Note:** A password can be any combination of letters and numbers up to 16 characters (a-z and 0-9). For more information, see “Password considerations” on page 13.

1. Start the Lenovo BIOS Setup Utility program (see “Starting the Lenovo BIOS Setup Utility program” on page 13).
2. From the **Security** menu, select **Set Administrator Password** and press the **Enter** key.
3. The password dialog box will be displayed. Type the password, and then press the **Enter** key.
4. Re-type the password to confirm, and then press the **Enter** key. If you typed the password correctly, the password will be installed.

To change an Administrator Password, do the following:

1. Start the Lenovo BIOS Setup Utility program (see “Starting the Lenovo BIOS Setup Utility program” on page 13).
2. From the **Security** menu, select **Set Administrator Password** and press the **Enter** key.
3. The password dialog box will be displayed. Type the current password, and then press the **Enter** key.
4. Type the new password, and then press the **Enter** key. Re-type the password to confirm the new password. If you typed the new password correctly, the new password will be installed. A Setup Noticed confirming that changes have been saved will be displayed.

To delete a previously set Administrator Password, do the following :

1. From the **Security** menu, select **Set Administrator Password** and press the **Enter** key.
2. The password dialog box will be displayed. Type the current password and press the **Enter** key.
3. To delete an **Administrator Password**, leave each new password line item blank, and then press the **Enter** key. A Setup Notice confirming that changes have been saved will be displayed.
4. Return to the Lenovo BIOS Setup Utility program menu and select the **Exit** option.
5. Select **Save changes and Exit** from the menu.

## Power-On Password

When a Power-On Password is set, you cannot start the Lenovo BIOS Setup Utility program until a valid password is typed from the keyboard.

### Setting, changing, or deleting a Power-On Password

**Note:** A password can be any combination of letters and numbers up to 16 characters (a-z and 0-9).



To set a Power-On Password, do the following:

1. Start the Lenovo BIOS Setup Utility program (See "Starting the Lenovo BIOS Setup Utility program" on page 13.)
2. From the **Security** menu, select **Set Power-On Password** and press the **Enter** key.
3. The password dialog box will be displayed. Type the password, and then press the **Enter** key.
4. Re-type the password to confirm. If you typed the password correctly, the password will be installed.

To change a Power-On Password, do the following:

1. Start the Lenovo BIOS Setup Utility program (See "Starting the Lenovo BIOS Setup Utility program" on page 13.)
2. From the **Security** menu, select **Set Power-On Password** and press the **Enter** key.
3. The password dialog box will be displayed. Type the current password, and then press the **Enter** key.
4. Type the new password, and then press the **Enter** key. Re-type the password to confirm the new password. If you typed the new password correctly, the new password will be installed. A Setup Noticed confirming that changes have been saved will be displayed.

To delete a previously set Power-On Password, do the following :

1. From the **Security** menu, select **Set Power-On Password** and press the **Enter** key.
2. The password dialog box will be displayed. Type the current password and press the **Enter** key.
3. To delete the **Power-On Password**, leave each new password line item blank, and then press Enter. A Setup Notice confirming that changes have been saved will be displayed.
4. Return to the Lenovo BIOS Setup Utility program menu and select the **Exit** option.
5. Select **Save changes and Exit** from the menu.

---

## Enabling or disabling a device

The <b>Devices</b> options is used to enable or disable user access to the following devices:	
<b>USB Functions</b>	Select whether to enable or disable <b>USB</b> (Universal Serial Bus) functions. If the functions are disabled, no <b>USB</b> devices can be used.
<b>SATA Mode</b>	When this feature is set to <b>Disabled</b> , all devices connected to the SATA connectors (e.g. hard disk drives or the optical disk drive) are disabled and cannot be accessed.
<b>Onboard Audio Controller</b>	Select whether to enable or disable the <b>Onboard Audio Controller</b> . When this feature is set to <b>Disabled</b> all devices connected to the audio connectors (e.g. headphones or a microphone) are disabled and cannot be used.
<b>Onboard Ethernet Controller or LAN Boot Agent</b>	Select whether to enable or disable the <b>Onboard Ethernet Controller</b> , or select whether to enable or disable load onboard <b>PXE (Preboot Execution Environment)</b> .

To enable or disable a device, do the following:

1. Start the Setup Utility program (see "Starting the Setup Utility program" on page 13).
2. From the Setup Utility program menu, select **Devices**.
3. Select an option as follows:

Select **USB Setup**, press the **Enter** key, and then select **USB Functions**.

Select **ATA Device Setup**, press the **Enter** key, and then select **SATA Mode**.

Select **Audio Setup**, press the **Enter** key, and then select **Onboard Audio Controller**.

Select **Network Setup**, press the **Enter** key, and then select **Onboard Ethernet Support** or **LAN Boot Agent**.

4. Select **Disabled** or **Enabled** and press the **Enter** key.
5. Return to the Lenovo BIOS Setup Utility program menu and select the **Exit** option.
6. Select **Save changes and Exit** from the menu.

**Notes:**

- a. If you do not want to save the settings, select **Discard changes and Exit** from the menu.
- b. Select IDE/AHCI Mode: Device driver support is required for AHCI. Depending on how the hard disk image was installed, changing this setting may prevent the system from booting.

---

## Selecting a startup device

If your computer does not boot from a device such as the CD/DVD-ROM drive disk or hard disk as expected, follow one of the procedures below.

### Selecting a temporary startup device

Use this procedure to start up from any boot device.

**Note:** Not all CDs, DVDs or hard disk drives are bootable.

1. Turn off your computer.
2. Press and hold the **F12** key, and then turn on the computer. When the **Startup Device Menu** appears, release the **F12** key.

**Note:** If the **Startup Device Menu** does not display using these steps, repeatedly press and release the **F12** key rather than keeping it pressed when turning on the computer.

3. Use **↑** and **↓** arrows to select the desired startup device from the **Startup Device Menu** and press the **Enter** key to begin.

**Note:** Selecting a startup device from the **Startup Device Menu** does not permanently change the startup sequence.

### Selecting or changing the startup device sequence

To view or permanently change the configured startup device sequence, do the following:

1. Start the Lenovo BIOS Setup Utility program (see “Starting the Lenovo BIOS Setup Utility program” on page 13).
2. From the Lenovo BIOS Setup Utility program main menu, select the **Startup** option.
3. Press the **Enter** key, and select the devices for the **Primary Boot Sequence**. Read the information displayed on the right side of the screen.
4. Use **-** and **+** arrows to select a device. Use the **<+>** or **<->** keys to move a device up or down. Use the **<x>** key to exclude the device from or include the device in the boot sequence.
5. Return to the Lenovo BIOS Setup Utility program menu and select the **Exit** option.
6. Select **Save changes and Exit** from the menu.

**Notes:**

- a. If you do not want to save the settings, select **Discard changes and Exit** from the menu.
- b. If you have changed these settings and want to return to the default settings, select **Load Optimal Defaults** from the menu.

---

## Exiting the Lenovo BIOS Setup Utility program

After you finish viewing or changing settings, press the **Esc** key to return to the Lenovo BIOS Setup Utility program main menu. You might have to press the **Esc** key several times. Do one of the following:

- If you want to save the new settings, select **Save changes and Exit** from the menu. When the **Save & reset** window shows, select the **Yes** button, and then press the **Enter** key to exit the Lenovo BIOS Setup Utility program.
- If you do not want to save the settings, select **Discard changes and Exit** from the menu. When the **Reset Without Saving** window shows, select the **Yes** button, and then press the **Enter** key to exit the Lenovo BIOS Setup Utility program.



---

## Chapter 6. Symptom-to-FRU Index

The Symptom-to-FRU index lists error symptoms and possible causes. The most likely cause is listed first. Always begin with Chapter 4, “General Checkout,” on page 11. This index can also be used to help you decide which FRUs to have available when servicing a computer. If you are unable to correct the problem using this index, go to “Undetermined problems” on page 20.

### Notes:

- If you have both an error message and an incorrect audio response, diagnose the error message first.
- If you cannot run the diagnostic tests or you get a diagnostic error code when running a test but did receive a POST error message, diagnose the POST error message first.
- If you did not receive any error message look for a description of your error symptoms in the first part of this index.

---

### Hard disk drive boot error

A hard disk drive boot error can be caused by the following.

Error	FRU/Action
The startup drive is not included in the boot sequence configuration.	Check the configuration and ensure the startup drive is in the boot sequence.
No operating system is installed on the boot drive.	Install an operating system on the boot drive.
The boot sector on the startup drive is corrupted.	The drive must be formatted. Do the following: <ol style="list-style-type: none"><li>1. Attempt to back up the data on the failing hard disk drive.</li><li>2. Use the operating system to format the hard disk drive.</li></ol>
The drive is defective.	Replace the hard disk drive.

---

### Power Supply Problems

Follow these procedures if you suspect there is a power supply problem.

Check/Verify	FRU/Action
Check that the following are properly installed: <ul style="list-style-type: none"><li>• Power Cord</li><li>• On/Off Switch connector</li><li>• System Board Power Supply connectors</li><li>• Microprocessor connections</li></ul>	Reseat connectors
Check the power cord.	Power Cord
Check the power-on switch.	Power-on Switch

---

## POST error codes

Each time you turn the computer on, it performs a series of tests to check that the system is operating correctly and that certain options are set. This series of tests is called the *Power-On Self-Test*, or *POST*. POST does the following:

- Checks some basic motherboard operations
- Checks that the memory is working correctly
- Starts video operations
- Verifies that the boot drive is working

POST Error Message	Description/Action
Keyboard error	Cannot initialize the keyboard. Make sure the keyboard is properly connected to the computer and that no keys are held pressed during POST. To purposely configure the computer without a keyboard, select <b>Keyboardless operation</b> in <b>Startup</b> and set the option to <b>Enabled</b> . The BIOS then ignores the missing keyboard during POST.
Reboot and Select proper Boot device or Insert Boot Media in selected Boot device	The BIOS was unable to find a suitable boot device. Make sure the boot drive is properly connected to the computer. Make sure you have bootable media in the boot device.

---

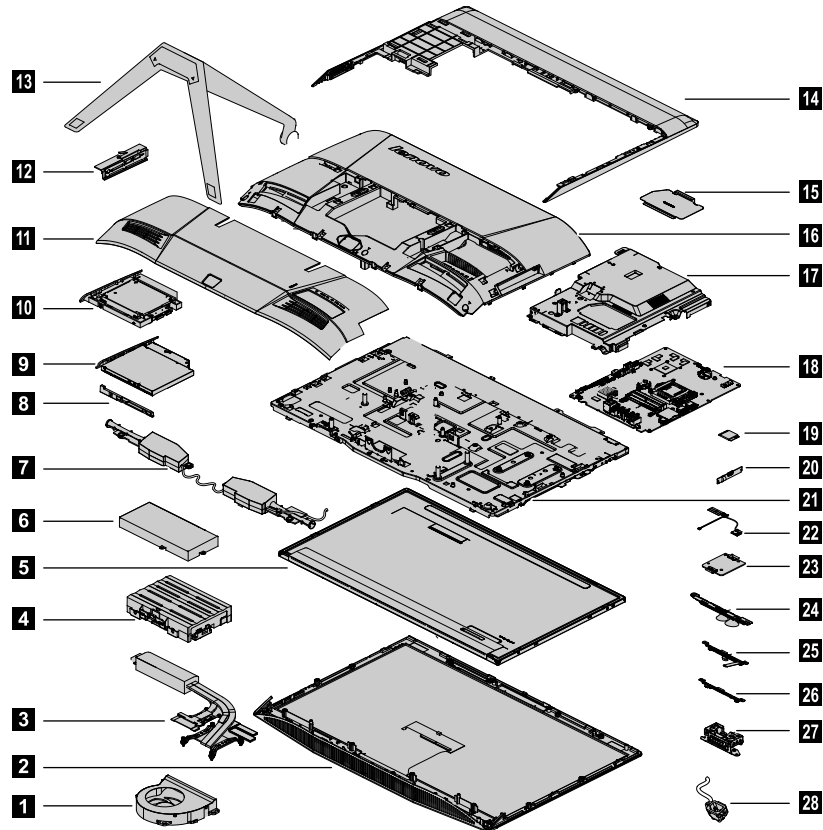
## Undetermined problems

1. Power-off the computer.
2. Remove or disconnect the following components (if connected or installed) one at a time.
  - a. External devices (modem, printer, or mouse)
  - b. Extended video memory
  - c. External Cache
  - d. External Cache RAM
  - e. Hard disk drive
  - f. Disk drive
3. Power-on the computer to re-test the system.
4. Repeat steps 1 through 3 until you find the failing device or component.

If all devices and components have been removed and the problem continues, replace the system board.

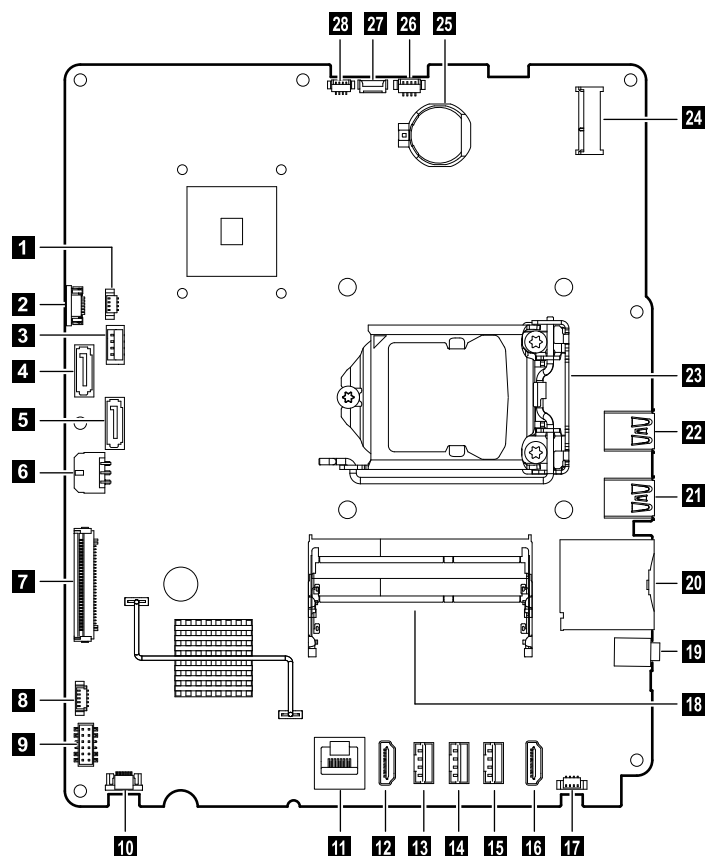
## Chapter 7. Hardware components

The following illustration shows the components that make up your computer.



1. System fan	15. Memory shielding
2. Chassis	16. Middle cover
3. Heat sink	17. EMI cover
4. Hard disk drive	18. Mother board
5. LCD Panel	19. Wi-Fi card
6. Power supply unit	20. Power switch board
7. Speaker	21. Main frame
8. Optical drive bracket	22. NFC module
9. Optical drive	23. Converter board
10. Solid state drive	24. 3D webcam module
11. Foot cover	25. 2D webcam module
12. Side I/O shielding	26. 3D webcam MIC module
13. Computer stand	27. AC bracket
14. Rear deco	28. Power connector

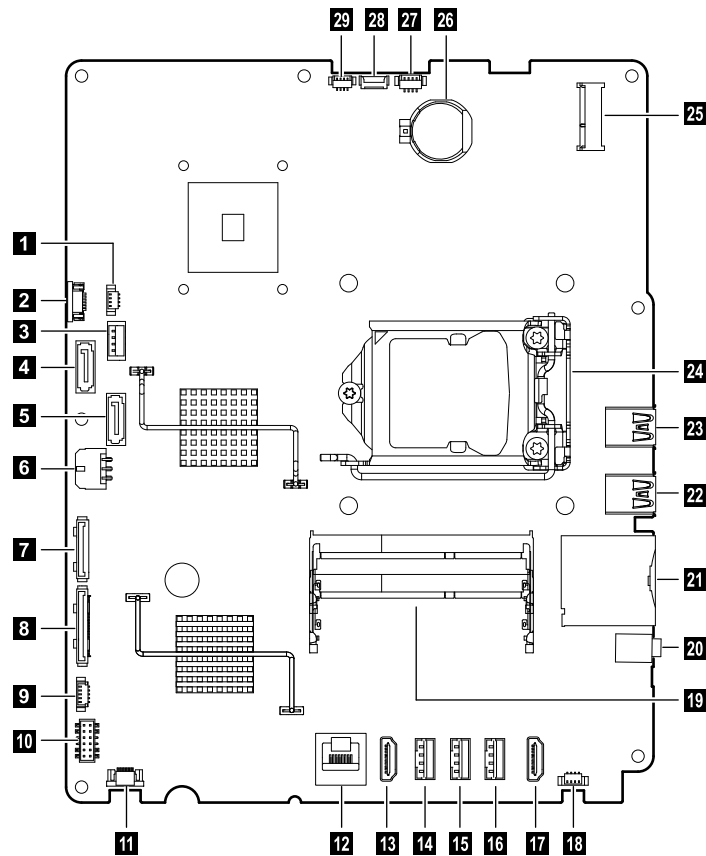
## Identifying parts on the motherboard of AIO 700–24ISH(FHD) and AIO 700–27ISH(FHD)



1. System fan connector	15. USB 3.0 connector
2. Power connector	16. HDMI-in connector
3. SATA power connector	17. Speaker connector
4. Optical drive SATA connector	18. Memory slot
5. Hard disk drive SATA connector	19. AUDIO connector
6. Power supply unit connector	20. Card reader connector
7. LVDS connector	21. USB 3.0 connector
8. Touch panel connector	22. USB 3.0 connector
9. Converter connector	23. CPU socket
10. NFC connector	24. Wi-Fi card connector
11. Ethernet connector	25. Battery slot
12. HDMI-out connector	26. 3D MIC connector
13. USB 2.0 connector	27. 3D webcam connector
14. USB 2.0 connector	28. 2D webcam connector

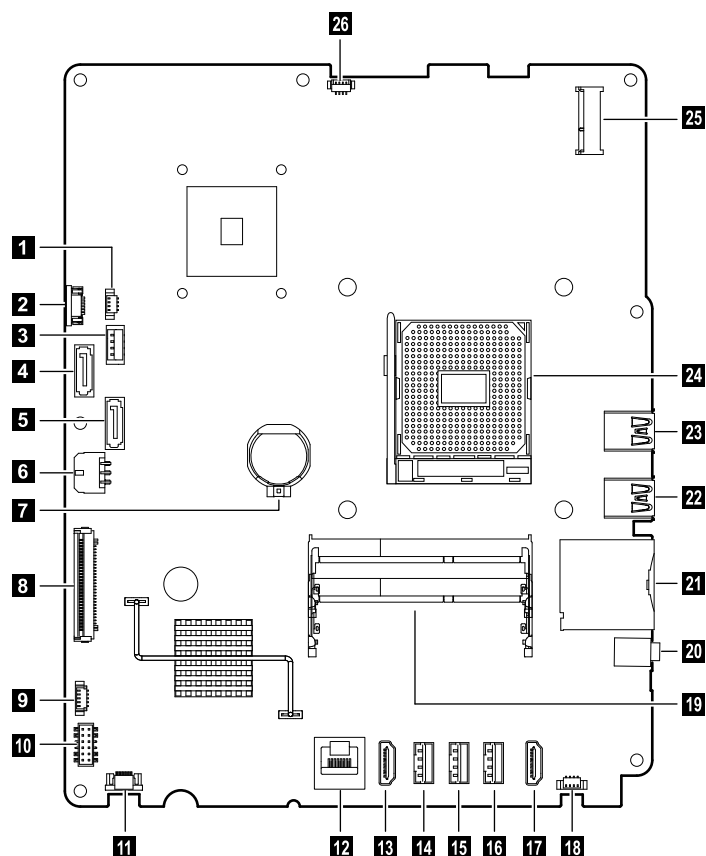


## Identifying parts on the motherboard of AIO 700–24ISH(UHD) and AIO 700–27ISH(UHD)



1. System fan connector	16. USB 3.0 connector
2. Power connector	17. HDMI-in connector
3. SATA power connector	18. Speaker connector
4. Optical drive SATA connector	19. Memory slot
5. Hard disk drive SATA connector	20. AUDIO connector
6. Power supply unit connector	21. Card reader connector
7. 3OP EDP	22. USB 3.0 connector
8. 4OP EDP	23. USB 3.0 connector
9. Touch panel connector	24. CPU socket
10. Converter connector	25. Wi-Fi card connector
11. NFC connector	26. Battery
12. Ethernet connector	27. 3D MIC connector
13. HDMI-out connector	28. 3D webcam connector
14. USB 2.0 connector	29. 2D webcam connector
15. USB 2.0 connector	

## Identifying parts on the motherboard of AIO 700-24AGR



1. System fan connector	14. USB 2.0 connector
2. Power connector	15. USB 2.0 connector
3. SATA power connector	16. USB 3.0 connector
4. Optical drive SATA connector	17. HDMI-in connector
5. Hard disk drive SATA connector	18. Speaker connector
6. Power supply unit connector	19. Memory slot
7. Battery	20. AUDIO connector
8. LVDS connector	21. Card reader connector
9. Touch panel connector	22. USB 3.0 connector
10. Converter connector	23. USB 3.0 connector
11. NFC connector	24. CPU socket
12. Ethernet connector	25. Wi-Fi card connector
13. HDMI-out connector	26. 2D webcam connector

---

## Chapter 8. Replacing hardware

**Attention:** Do not remove the computer cover or attempt any repair before reading the “Important safety information” in the Safety and Warranty Guide that was included with your computer. To obtain copies of the Safety and Warranty Guide, go to the Support Web site at: <http://consumersupport.lenovo.com>.

**Note:** Use only parts provided by Lenovo.

---

### General information

#### Pre-disassembly instructions

Before starting the disassembly procedure, make sure that you do the following:

1. Turn off the power to the system and all peripherals.
2. Unplug all power and signal cables from the computer.
3. Place the system on a flat, stable surface.

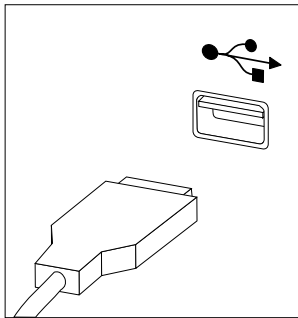
---

## Replacing the keyboard and mouse

**Note:** Your keyboard will be connected to a USB connector at either side or at the rear of the computer.

### To replace the keyboard and mouse:

- Step 1. Remove any media (disks, CDs, or memory cards) from the drives, shut down the computer, and turn off all attached devices.
- Step 2. Unplug all power cords from electrical outlets.
- Step 3. Locate the connector for the keyboard. Refer to “Side view of the computer” and “Rear view of the computer”.



- Step 4. Disconnect the defective keyboard cable from the computer and connect the new keyboard cable to the same connector.
- Step 5. The mouse can be replaced using the same method.

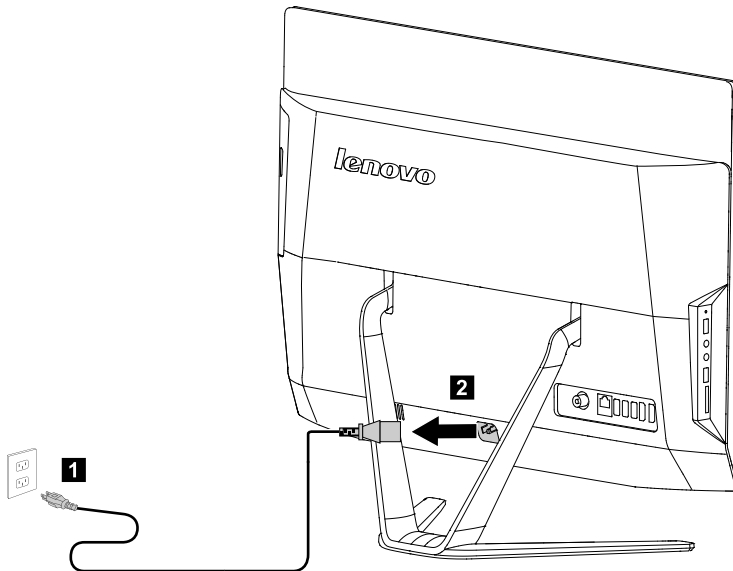
---

## Replacing the power cord

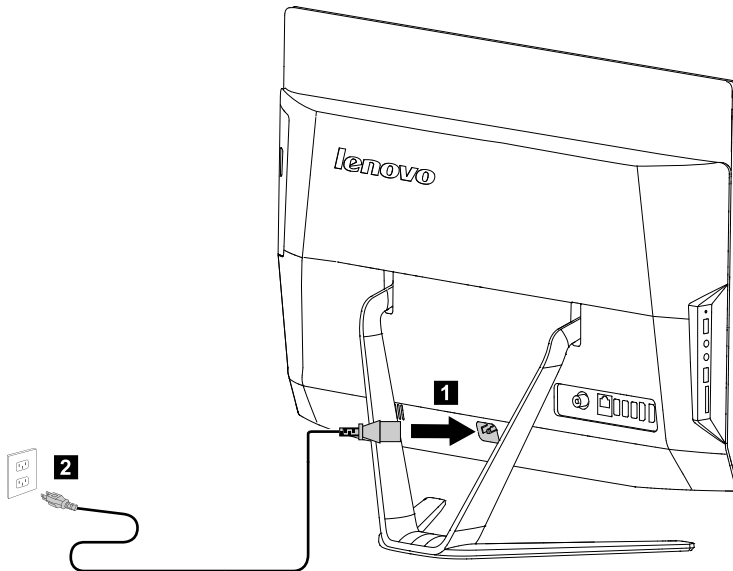
**Attention:** Turn off the computer and wait 3 to 5 minutes to let it cool down before removing the cover.

- Step 1. Remove any media (disks, CDs, or memory cards) from the drives, shut down the operating system, and turn off the computer and all attached devices.

Step 2. Unplug the power cord from electrical outlet **1**, and then disconnect the power cord from the connector on the computer **2**.



Step 3. Connect the new power cord as shown.



---

## Removing the stand base

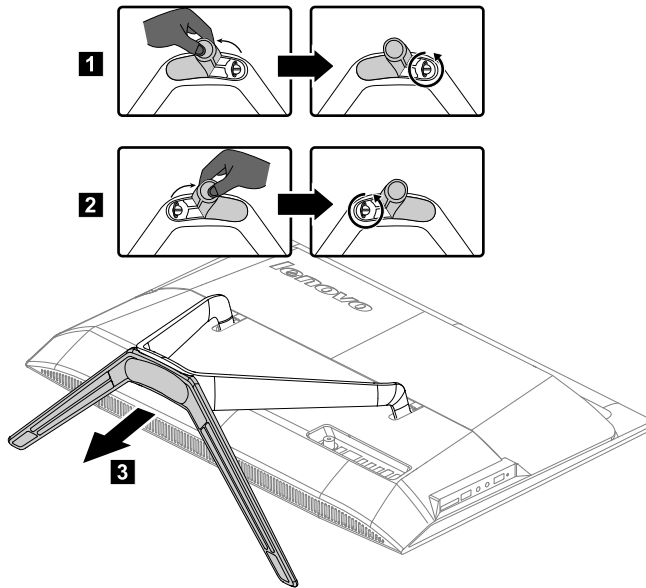
**Attention:** Turn off the computer and wait 3 to 5 minutes to let it cool down before removing the cover.

**Note:** It may be helpful to place the computer face-down on a soft flat surface for this procedure. Lenovo recommends that you use a blanket, towel, or other soft cloth to protect the touch screen from scratches or other damage.

Step 1. Remove any media (disks, CDs, or memory cards) from the drives, shut down the operating system, and turn off the computer and all attached devices.

Step 2. Unplug all power cords from electrical outlets.

- Step 3. Disconnect all cables attached to the computer. This includes power cords, input/output (I/O) cables, and any other cables that are connected to the computer. Refer to “Left and right views” and “Rear view” for help with locating the various connectors.
- Step 4. Open the rubber cover, and then twist the hand screw ring counter-clockwise until the base comes loose to release the stand base from the stand holder. **1 2**
- Step 5. Slide the stand base out from the holder, and then put it aside. **3**



- Step 6. Refer to “Installing the computer stand” to reinstall the stand base.

---

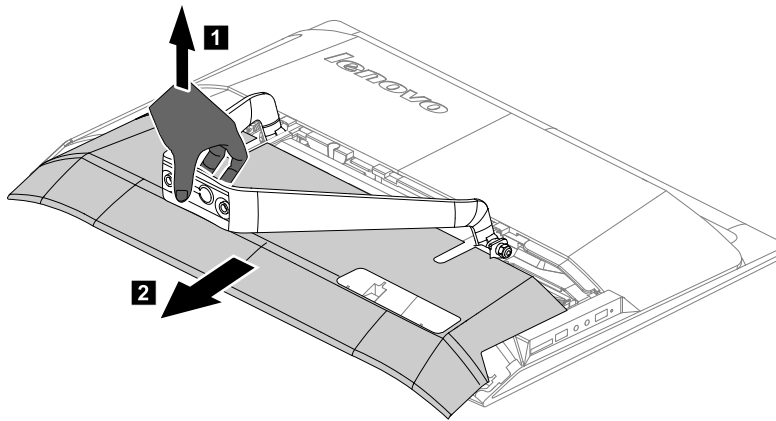
## Removing the foot cover

**Attention:** Turn off the computer and wait 3 to 5 minutes to let it cool down before removing the cover.

**Note:** It may be helpful to place the computer face-down on a soft flat surface for this procedure. Lenovo recommends that you use a blanket, towel, or other soft cloth to protect the touch screen from scratches or other damage.

- Step 1. Remove any media (disks, CDs, or memory cards) from the drives, shut down the operating system, and turn off the computer and all attached devices.
- Step 2. Unplug all power cords from electrical outlets.
- Step 3. Disconnect all cables attached to the computer. This includes power cords, input/output (I/O) cables, and any other cables that are connected to the computer. Refer to “Left and right views” and “Rear view” for help with locating the various connectors.
- Step 4. Remove the stand base. Refer to “Removing the stand base”.

Step 5. Lift up the stand holder, and then slide out the foot cover as shown.



Step 6. To reattach the foot cover:

- a. Lift up the stand holder.
- b. Line up the foot cover with mounting holes on the back of the computer, and then slide it back into position.

---

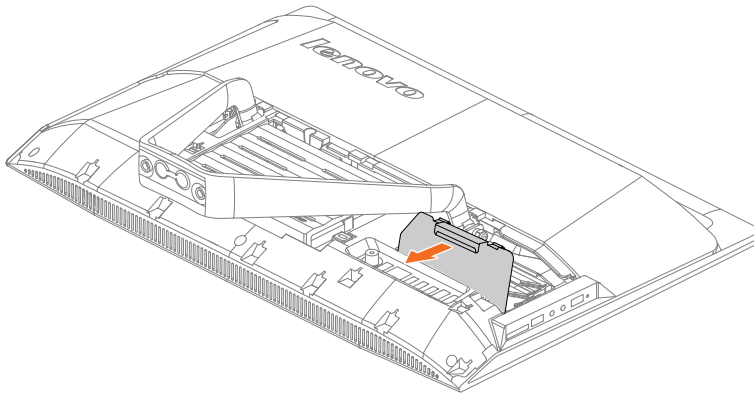
## Replacing the memory module

**Attention:** Turn off the computer and wait 3 to 5 minutes to let it cool down before removing the cover.

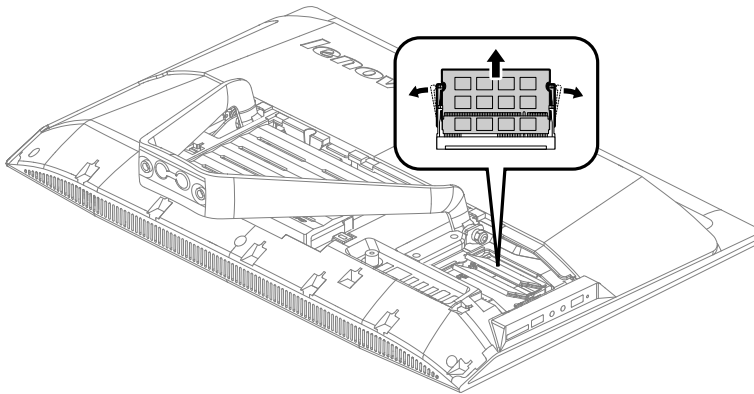
**Note:** It may be helpful to place the computer face-down on a soft flat surface for this procedure. Lenovo recommends that you use a blanket, towel, or other soft cloth to protect the touch screen from scratches or other damage.

- Step 1. Remove any media (disks, CDs, or memory cards) from the drives, shut down the operating system, and turn off the computer and all attached devices.
- Step 2. Unplug all power cords from electrical outlets.
- Step 3. Disconnect all cables attached to the computer. This includes power cords, input/output (I/O) cables, and any other cables that are connected to the computer. Refer to “Left and right views” and “Rear view” for help with locating the various connectors.
- Step 4. Remove the stand base. Refer to “Removing the stand base”.
- Step 5. Remove the foot cover. Refer to “Removing the foot cover”.

Step 6. Remove the memory shielding.



Step 7. Push out the latches on both sides of the memory socket to release the memory module and gently pull the memory module upward to remove it from its socket.



Step 8. To install the new memory module:

- a. Align the new memory module with the memory slot, and then insert it and push down on the top edge. Make sure the latches lock the memory module in place.
- b. Reattach the memory shielding.

Step 9. Reattach the foot cover and stand base.

---

## Replacing the hard disk drive

**Attention:** Turn off the computer and wait 3 to 5 minutes to let it cool down before removing the cover.

**Note:** It may be helpful to place the computer face-down on a soft flat surface for this procedure. Lenovo recommends that you use a blanket, towel, or other soft cloth to protect the touch screen from scratches or other damage.

Step 1. Remove any media (disks, CDs, or memory cards) from the drives, shut down the operating system, and turn off the computer and all attached devices.

Step 2. Unplug all power cords from electrical outlets.

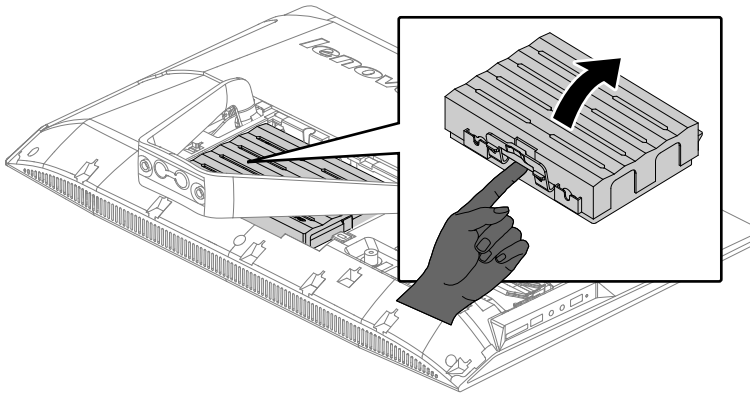
Step 3. Disconnect all cables attached to the computer. This includes power cords, input/output (I/O) cables, and any other cables that are connected to the computer. Refer to “Left and right views” and “Rear view” for help with locating the various connectors.

Step 4. Remove the stand base. Refer to “Removing the stand base”.

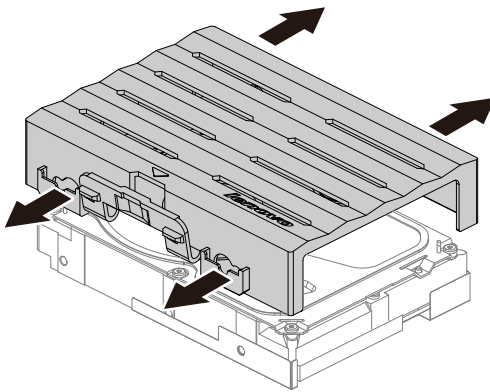
Step 5. Remove the foot cover. Refer to “Removing the foot cover”.



Step 6. Lift out the hard disk drive and bracket as shown.



Step 7. Push the lock pins outward to release the hard disk drive from the bracket.



Step 8. To install the new hard disk drive:

- a. Line up the new hard disk drive with the bracket and secure it with the pins.
- b. Connect the data and power cables to the new hard disk drive.
- c. Slide the hard disk drive and bracket back into position.

Step 9. Reattach the foot cover and stand base.

---

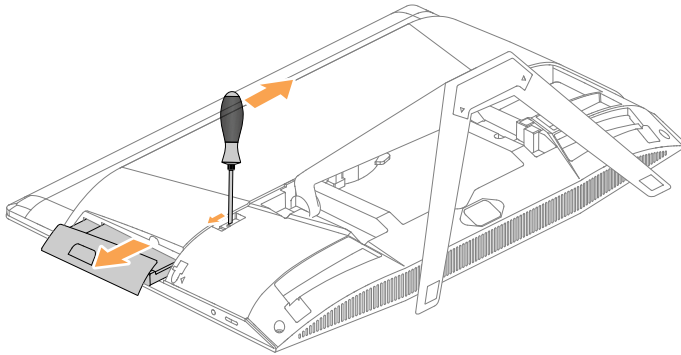
## Replacing the optical drive

**Attention:** Turn off the computer and wait 3 to 5 minutes to let it cool down before removing the cover.

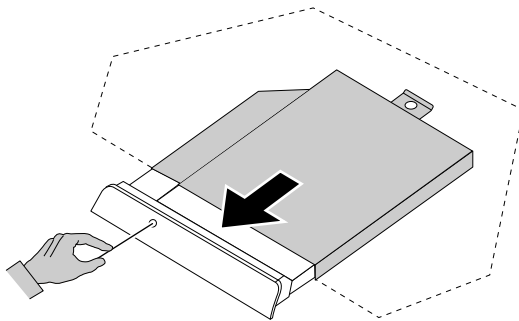
**Note:** It may be helpful to place the computer face-down on a soft flat surface for this procedure. Lenovo recommends that you use a blanket, towel, or other soft cloth to protect the touch screen from scratches or other damage.

- Step 1. Remove any media (disks, CDs, or memory cards) from the drives, shut down the operating system, and turn off the computer and all attached devices.
- Step 2. Unplug all power cords from electrical outlets.
- Step 3. Disconnect all cables attached to the computer. This includes power cords, input/output (I/O) cables, and any other cables that are connected to the computer. Refer to “Left and right views” and “Rear view” for help with locating the various connectors.
- Step 4. Remove the stand base. Refer to “Removing the stand base”.
- Step 5. Remove the foot cover. Refer to “Removing the foot cover”.

Step 6. Locate the optical removal notch, and then push the optical drive out using a screwdriver.

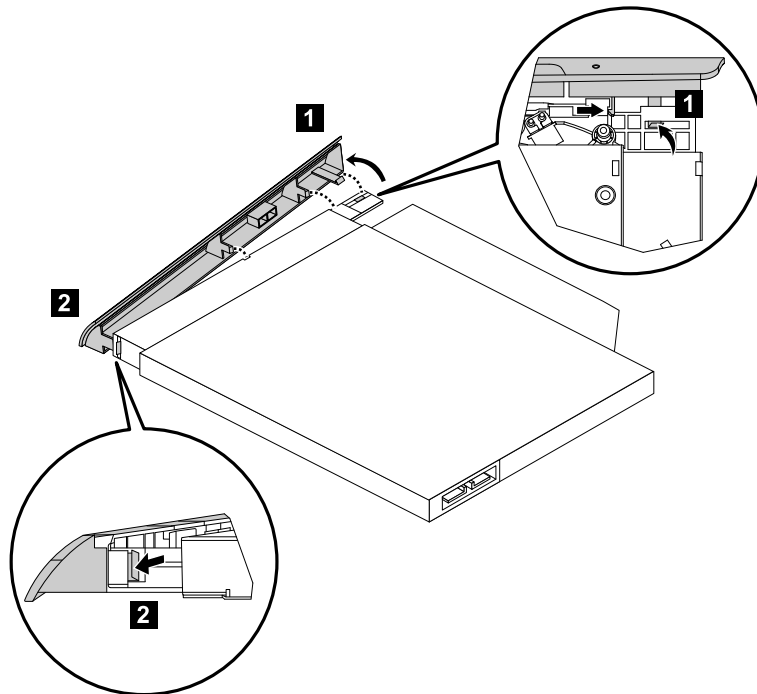


Step 7. Push a small iron stick or paper clip into the small hole on the optical drive cover so that the disk springs out as shown.



Step 8. Use a small flat head screwdriver to press and push out the pins that secure the cover to the disk. **1 2**

Step 9. Separate the cover from the defective optical drive.



Step 10. To install the new optical drive:

- a. Align the new optical drive with the cover, and then push the cover back into position.
- b. Slide the new optical drive into the drive bay.

Step 11. Reattach the foot cover and stand base.

---

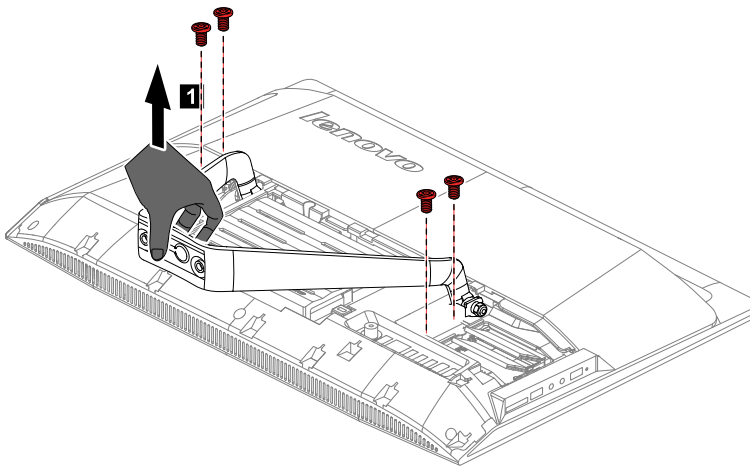
## Removing the stand holder

**Note:** Turn off the computer and wait 3 to 5 minutes to let it cool down before removing the cover.

**Note:** It may be helpful to place the computer face-down on a soft flat surface for this procedure. Lenovo recommends that you use a blanket, towel, or other soft cloth to protect the computer screen from scratches or other damage.

**To remove the stand holder:**

- Step 1. Remove any media (disks, CDs, DVDs, or memory cards) from the drives, shut down the operating system, and turn off the computer and all attached devices.
- Step 2. Unplug all power cords from electrical outlets.
- Step 3. Disconnect all cables attached to the computer. This includes power cords, input/output (I/O) cables, and any other cables that are connected to the computer. Refer to “Left and right view” and “Rear view” for help with locating the various connectors.
- Step 4. Remove the stand base. Refer to “Removing the stand base”.
- Step 5. Remove the foot cover. Refer to “Removing the foot cover”.
- Step 6. Remove the four screws that secure the stand holder to the chassis, and then lift up the stand holder to remove it.



- Step 7. To reattach the stand holder:
  - a. Align the holes on the stand holder with mounting holes on the chassis, place the stand holder back into position.
  - b. Secure the stand holder to the chassis with the four screws.
- Step 8. Line up the foot cover with mounting holes on the back of the computer, and then slide it back into position.
- Step 9. Reattach the stand base.

---

## Removing the middle cover

**Note:** Turn off the computer and wait 3 to 5 minutes to let it cool down before removing the cover.

**Note:** It may be helpful to place the computer face-down on a soft flat surface for this procedure. Lenovo recommends that you use a blanket, towel, or other soft cloth to protect the computer screen from scratches or other damage.

**To remove the middle cover:**

- Step 1. Remove any media (disks, CDs, DVDs, or memory cards) from the drives, shut down the operating system, and turn off the computer and all attached devices.
- Step 2. Unplug all power cords from electrical outlets.
- Step 3. Disconnect all cables attached to the computer. This includes power cords, input/output (I/O) cables, and any other cables that are connected to the computer. Refer to “Left and right view” and “Rear view” for help with locating the various connectors.
- Step 4. Remove the stand base. Refer to “Removing the stand base”.
- Step 5. Remove the foot cover. Refer to “Removing the foot cover”.
- Step 6. Remove the optical drive. Refer to “Replacing the optical drive”.
- Step 7. Remove the stand holder. Refer to “Removing the stand holder”.
- Step 8. Remove the screws that secure the middle cover to the chassis.



- Step 9. Lift up the middle cover as shown to remove it.



Step 10. To reattach the middle cover:

- a. Line up the middle cover with chassis, and then place the middle cover back.
- b. Secure the middle cover to the chassis with the screws.

Step 11. Reattach the stand holder, optical drive, foot cover and stand base.

---

## Replacing the converter board

**Note:** Turn off the computer and wait 3 to 5 minutes to let it cool down before removing the cover.

**Note:** It may be helpful to place the computer face-down on a soft flat surface for this procedure. Lenovo recommends that you use a blanket, towel, or other soft cloth to protect the computer screen from scratches or other damage.

### To replace the converter board:

- Step 1. Remove any media (disks, CDs, DVDs, or memory cards) from the drives, shut down the operating system, and turn off the computer and all attached devices.
- Step 2. Unplug all power cords from electrical outlets.
- Step 3. Disconnect all cables attached to the computer. This includes power cords, input/output (I/O) cables, and any other cables that are connected to the computer. Refer to “Left and right view” and “Rear view” for help with locating the various connectors.
- Step 4. Remove the stand base. Refer to “Removing the stand base”.
- Step 5. Remove the foot cover. Refer to “Removing the foot cover”.
- Step 6. Remove the stand holder. Refer to “Removing the stand holder”.
- Step 7. Remove the middle cover. Refer to “Removing the middle cover”.

- Step 8. Disconnect the two cables from the converter.
- Step 9. Remove the two screws that secure the converter board to the chassis, and then remove the converter.



- Step 10. To install the new converter board:
- Connect the two cables to the new converter board.
  - Align the new converter board into position.
  - Secure the new converter board with the two screws.
- Step 11. Reattach the middle cover, stand holder, foot cover and stand base.

---

## Removing the EMI cover

**Note:** Turn off the computer and wait 3 to 5 minutes to let it cool down before removing the cover.

**Note:** It may be helpful to place the computer face-down on a soft flat surface for this procedure. Lenovo recommends that you use a blanket, towel, or other soft cloth to protect the computer screen from scratches or other damage.

### To replace the EMI cover

- Step 1. Remove any media (disks, CDs, DVDs, or memory cards) from the drives, shut down the operating system, and turn off the computer and all attached devices.
- Step 2. Unplug all power cords from electrical outlets.
- Step 3. Disconnect all cables attached to the computer. This includes power cords, input/output (I/O) cables, and any other cables that are connected to the computer. Refer to “Left and right view” and “Rear view” for help with locating the various connectors.
- Step 4. Remove the stand base. Refer to “Removing the stand base”.
- Step 5. Remove the foot cover. Refer to “Removing the foot cover”.
- Step 6. Remove the stand holder. Refer to “Removing the stand holder”.
- Step 7. Remove the middle cover. Refer to “Removing the middle cover”.



Step 8. Remove the I/O shielding.

Step 9. Remove the screws that secure the EMI cover to the chassis, and then lift it up.



Step 10. To reattach the EMI cover:

- a. Line up the holes on the EMI cover with mounting holes on the chassis, and then place EMI cover back into position.
- b. Secure the EMI cover to the chassis with the screws.
- c. Line up the hole on the I/O shielding with the mounting hole on the EMI cover.

Step 11. Reattach the middle cover, stand holder, foot cover and stand base.

---

## Replacing the Wi-Fi card

**Note:** Turn off the computer and wait 3 to 5 minutes to let it cool down before removing the cover.

**Note:** It may be helpful to place the computer face-down on a soft flat surface for this procedure. Lenovo recommends that you use a blanket, towel, or other soft cloth to protect the computer screen from scratches or other damage.

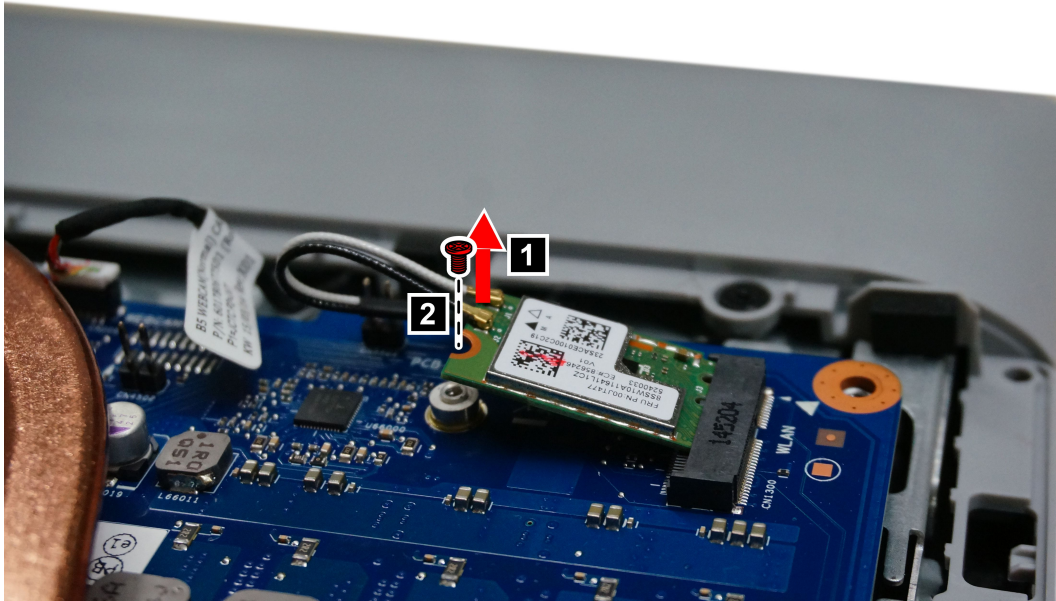
### To replace the Wi-Fi card:

- Step 1. Remove any media (disks, CDs, DVDs, or memory cards) from the drives, shut down the operating system, and turn off the computer and all attached devices.
- Step 2. Unplug all power cords from electrical outlets.
- Step 3. Disconnect all cables attached to the computer. This includes power cords, input/output (I/O) cables, and any other cables that are connected to the computer. Refer to “Left and right view” and “Rear view” for help with locating the various connectors.
- Step 4. Remove the stand base. Refer to “Removing the stand base”.
- Step 5. Remove the foot cover. Refer to “Removing the foot cover”.
- Step 6. Remove the stand holder. Refer to “Removing the stand holder”.
- Step 7. Remove the middle cover. Refer to “Removing the middle cover”.
- Step 8. Remove the EMI cover. Refer to “Removing the EMI cover”.

Step 9. Disconnect the antenna cables from the Wi-Fi card. **1**

Step 10. Remove the screw that secures the Wi-Fi card to the motherboard. **2**

Step 11. Lift up the Wi-Fi card to remove it from the socket.



Step 12. To install the new Wi-Fi card:

- a. Insert the notched end of the Wi-Fi card into the card port on the motherboard.
- b. Secure new the Wi-Fi card to the motherboard with the screw.
- c. Connect the antenna cables to the new Wi-Fi card.

Step 13. Reattach the EMI cover, middle cover, stand holder, foot cover and stand base.

---

## Replacing the heat-sink

**Note:** Turn off the computer and wait 3 to 5 minutes to let it cool down before removing the cover.

**Note:** It may be helpful to place the computer face-down on a soft flat surface for this procedure. Lenovo recommends that you use a blanket, towel, or other soft cloth to protect the computer screen from scratches or other damage.

### To replace the heat-sink:

- Step 1. Remove any media (disks, CDs, DVDs, or memory cards) from the drives, shut down the operating system, and turn off the computer and all attached devices.
- Step 2. Unplug all power cords from electrical outlets.
- Step 3. Disconnect all cables attached to the computer. This includes power cords, input/output (I/O) cables, and any other cables that are connected to the computer. Refer to “Left and right view” and “Rear view” for help with locating the various connectors.
- Step 4. Remove the stand base. Refer to “Removing the stand base”.
- Step 5. Remove the foot cover. Refer to “Removing the foot cover”.
- Step 6. Remove the optical drive. Refer to “Replacing the optical drive”.
- Step 7. Remove the stand holder. Refer to “Removing the stand holder”.



- Step 8. Remove the middle cover. Refer to “Removing the middle cover”.
- Step 9. Remove the EMI cover. Refer to “Removing the EMI cover”.
- Step 10. Remove the sealing tape between the system fan and heat-sink.
- Step 11. Remove the nine screws that secure the heat-sink to the motherboard and chassis.
- Step 12. Slide then lift up the heat-sink to remove it.



**Attention:** Place the heat-sink upside down on a flat surface to prevent thermal grease from contaminating other components.

**Attention:** Use an alcohol pad to wipe the thermal grease off the CPU.

- Step 13. To install the new heat-sink:
- Line up the new heat-sink with mounting holes on the motherboard, and then place it into position.
  - Follow the numbers printed on the new heat-sink to secure it in order using the screws.
  - Use the sealing tape to seal the gap in-between the system fan and heat-sink.
- Step 14. Reattach the EMI cover, middle cover, optical drive, stand holder, foot cover and stand base.

---

## Replacing an Intel CPU

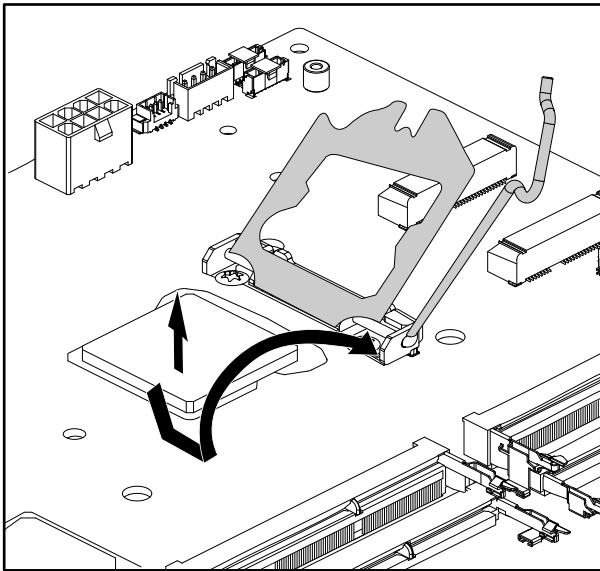
**Note:** Turn off the computer and wait 3 to 5 minutes to let it cool down before removing the cover.

**Note:** It may be helpful to place the computer face-down on a soft flat surface for this procedure. Lenovo recommends that you use a blanket, towel, or other soft cloth to protect the computer screen from scratches or other damage.

### To replace the CPU

- Step 1. Remove any media (disks, CDs, DVDs, or memory cards) from the drives, shut down the operating system, and turn off the computer and all attached devices.
- Step 2. Unplug all power cords from electrical outlets.

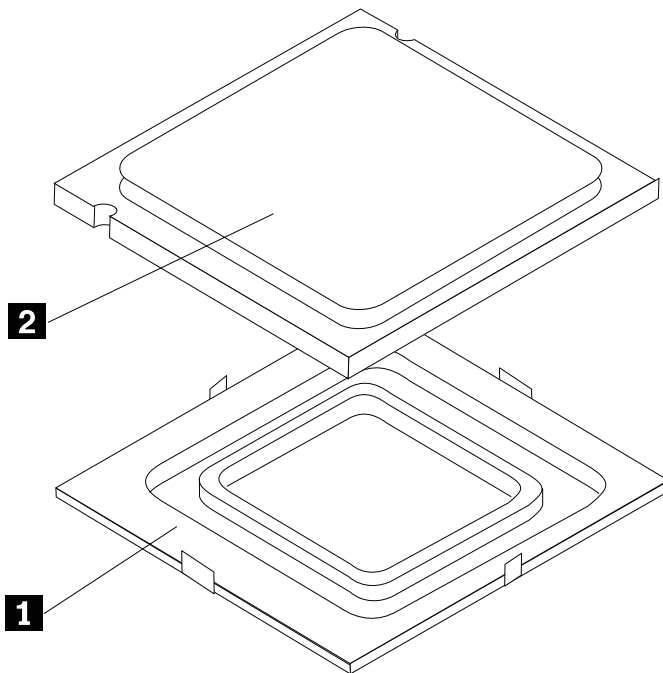
- Step 3. Disconnect all cables attached to the computer. This includes power cords, input/output (I/O) cables, and any other cables that are connected to the computer. Refer to “Left and right view” and “Rear view” for help with locating the various connectors.
- Step 4. Remove the stand base. Refer to “Removing the stand base”.
- Step 5. Remove the foot cover. Refer to “Removing the foot cover”.
- Step 6. Remove the stand holder. Refer to “Removing the stand holder”.
- Step 7. Remove the middle cover. Refer to “Removing the middle cover”.
- Step 8. Remove the EMI cover. Refer to “Removing the EMI cover”.
- Step 9. Remove the heat-sink. Refer to “Replacing the heat sink”.
- Step 10. Lift the small handle and open the retainer.
- Step 11. Lift the microprocessor straight up and out of the socket.



**Attention:** Do not touch the gold contacts on the bottom of the microprocessor. When handling the microprocessor, touch only the sides.

**Note:** Do not drop anything onto the microprocessor socket while it is exposed. The socket pins must be kept as clean as possible.

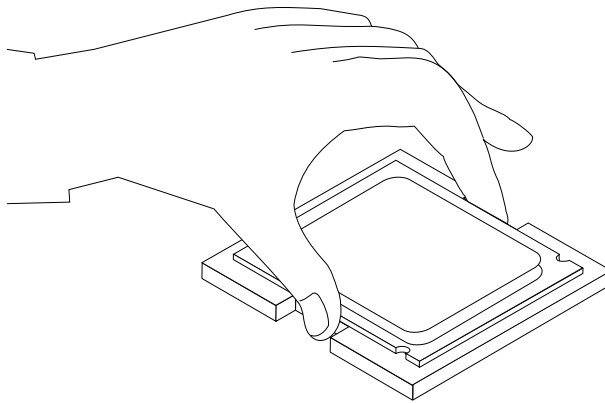
Step 12. Holding the sides of the microprocessor with your fingers, remove the protective cover **1** that protects the gold contacts on the new microprocessor. **2**



Step 13. Holding the sides of the microprocessor with your fingers, position the microprocessor so that the notches on the microprocessor are aligned with the tabs in the microprocessor socket.

**Important:** To avoid damaging the microprocessor contacts, keep the microprocessor completely level while installing it into the socket.

Step 14. Lower the microprocessor straight down into its socket on the motherboard.



Step 15. To secure the microprocessor in the socket, close the microprocessor retainer and lock it into position with the small handle.

Step 16. Use a thermal grease syringe to place 5 drops of grease on the top of the microprocessor. Each drop of grease should be 0.03ml (3 tick marks on the grease syringe).

Step 17. Reattach the heat-sink, EMI cover, middle cover, stand holder, foot cover and stand base.

---

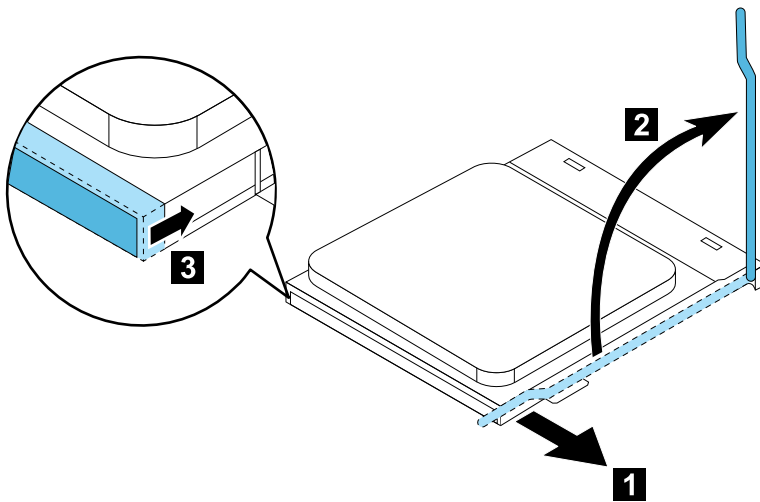
## Replacing an AMD CPU

**Note:** Turn off the computer and wait 3 to 5 minutes to let it cool down before removing the cover.

**Note:** It may be helpful to place the computer face-down on a soft flat surface for this procedure. Lenovo recommends that you use a blanket, towel, or other soft cloth to protect the computer screen from scratches or other damage.

### To replace the CPU

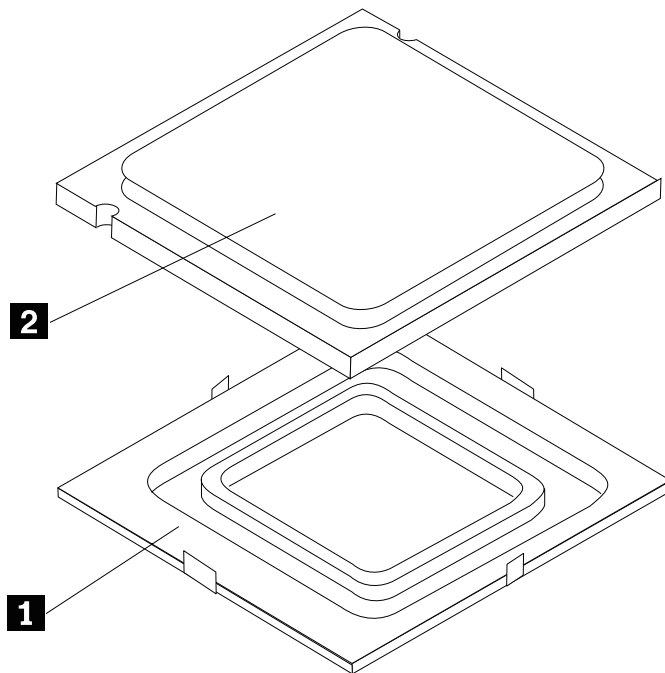
- Step 1. Remove any media (disks, CDs, DVDs, or memory cards) from the drives, shut down the operating system, and turn off the computer and all attached devices.
- Step 2. Unplug all power cords from electrical outlets.
- Step 3. Disconnect all cables attached to the computer. This includes power cords, input/output (I/O) cables, and any other cables that are connected to the computer. Refer to “Left and right view” and “Rear view” for help with locating the various connectors.
- Step 4. Remove the stand base. Refer to “Removing the stand base”.
- Step 5. Remove the foot cover. Refer to “Removing the foot cover”.
- Step 6. Remove the stand holder. Refer to “Removing the stand holder”.
- Step 7. Remove the middle cover. Refer to “Removing the middle cover”.
- Step 8. Remove the EMI cover. Refer to “Removing the EMI cover”.
- Step 9. Remove the heat-sink. Refer to “Replacing the heat sink”.
- Step 10. Lift the small handle and open the retainer. **1 2**
- Step 11. Lift the microprocessor straight up and out of the socket. **3**



**Attention:** Do not touch the gold contacts on the bottom of the microprocessor. When handling the microprocessor, touch only the sides.

**Note:** Do not drop anything onto the microprocessor socket while it is exposed. The socket pins must be kept as clean as possible.

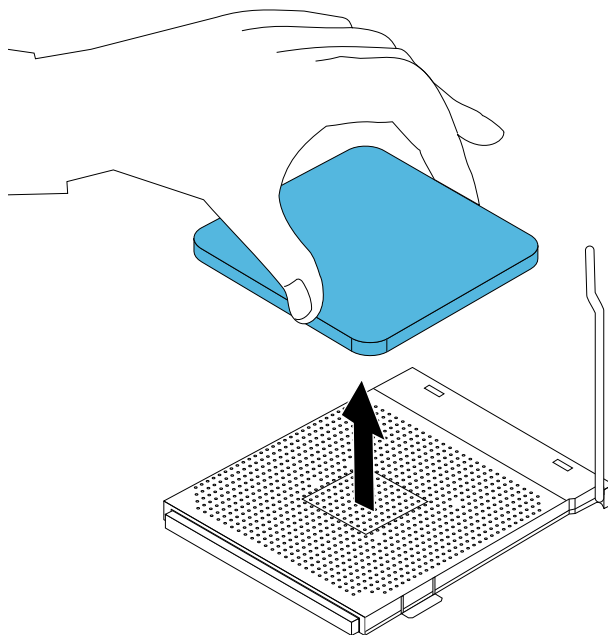
Step 12. Holding the sides of the microprocessor with your fingers, remove the protective cover **1** that protects the gold contacts on the new microprocessor. **2**



Step 13. Holding the sides of the microprocessor with your fingers, position the microprocessor so that the notches on the microprocessor are aligned with the tabs in the microprocessor socket.

**Important:** To avoid damaging the microprocessor contacts, keep the microprocessor completely level while installing it into the socket.

Step 14. Lower the microprocessor straight down into its socket on the motherboard.



Step 15. To secure the microprocessor in the socket, close the microprocessor retainer and lock it into position with the small handle.

Step 16. Use a thermal grease syringe to place 5 drops of grease on the top of the microprocessor. Each drop of grease should be 0.03ml (3 tick marks on the grease syringe).

Step 17. Reattach the heat-sink, EMI cover, middle cover, stand holder, foot cover and stand base.

---

## Replacing the system fan

**Note:** Turn off the computer and wait 3 to 5 minutes to let it cool down before removing the cover.

**Note:** It may be helpful to place the computer face-down on a soft flat surface for this procedure. Lenovo recommends that you use a blanket, towel, or other soft cloth to protect the computer screen from scratches or other damage.

### To replace the system fan

Step 1. Remove any media (disks, CDs, DVDs, or memory cards) from the drives, shut down the operating system, and turn off the computer and all attached devices.

Step 2. Unplug all power cords from electrical outlets.

Step 3. Disconnect all cables attached to the computer. This includes power cords, input/output (I/O) cables, and any other cables that are connected to the computer. Refer to “Left and right view” and “Rear view” for help with locating the various connectors.

Step 4. Remove the stand base. Refer to “Removing the stand base”.

Step 5. Remove the foot cover. Refer to “Removing the foot cover”.

Step 6. Remove the optical drive. Refer to “Replacing the optical drive”.

Step 7. Remove the stand holder. Refer to “Removing the stand holder”.

Step 8. Remove the middle cover. Refer to “Removing the middle cover”.

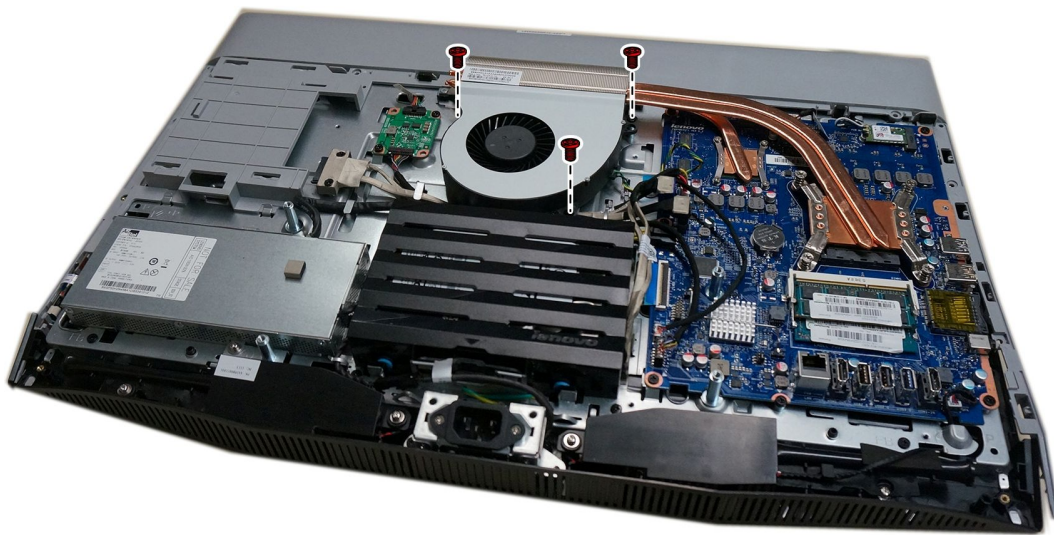
Step 9. Remove the EMI cover. Refer to “Removing the EMI cover”.

Step 10. Remove the sealing tape between the system fan and heat-sink.

Step 11. Remove the three screws that secure the system fan to the chassis.

Step 12. Disconnect the power cable from the motherboard.

Step 13. Lift up the system fan to remove it.



Step 14. To install the new system fan:

- a. Place the new system fan into position, and then secure it to the chassis with three screws.

- b. Connect the system fan power cable to the connector on the motherboard.
- c. Use the sealing tape to seal the gap in-between the system fan and heat-sink.

Step 15. Reattach the EMI cover, middle cover, optical drive, stand holder, foot cover and stand base.

---

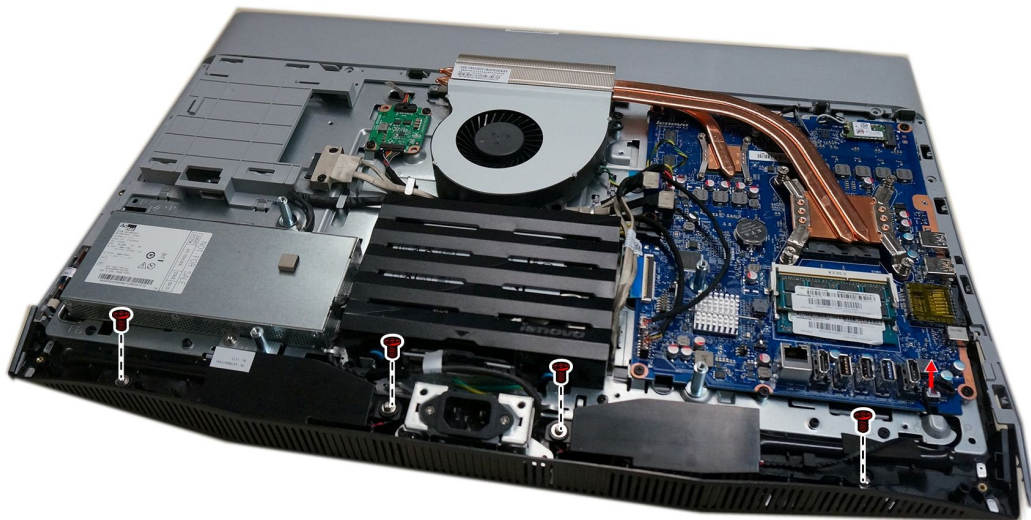
## Replacing the speaker system

**Note:** Turn off the computer and wait 3 to 5 minutes to let it cool down before removing the cover.

**Note:** It may be helpful to place the computer face-down on a soft flat surface for this procedure. Lenovo recommends that you use a blanket, towel, or other soft cloth to protect the computer screen from scratches or other damage.

### To replace the speaker system:

- Step 1. Remove any media (disks, CDs, DVDs, or memory cards) from the drives, shut down the operating system, and turn off the computer and all attached devices.
- Step 2. Unplug all power cords from electrical outlets.
- Step 3. Disconnect all cables attached to the computer. This includes power cords, input/output (I/O) cables, and any other cables that are connected to the computer. Refer to “Left and right view” and “Rear view” for help with locating the various connectors.
- Step 4. Remove the stand base. Refer to “Removing the stand base”.
- Step 5. Remove the foot cover. Refer to “Removing the foot cover”.
- Step 6. Remove the optical drive. Refer to “Replacing the optical drive”.
- Step 7. Remove the stand holder. Refer to “Removing the stand holder”.
- Step 8. Remove the middle cover. Refer to “Removing the middle cover”.
- Step 9. Remove the EMI cover. Refer to “Removing the EMI cover”.
- Step 10. Disconnect the speaker cables from the connector on the motherboard.
- Step 11. Remove the four screws that secure the speaker system to the chassis, and then lift up the speaker system to remove it.



- Step 12. To install the new speaker system:
- a. Place the new speaker system into position, and then secure it with four screws.
  - b. Connect the new speaker cables to the connector on the motherboard.

Step 13. Reattach the EMI cover, middle cover, optical drive, stand holder, foot cover and stand base.

---

## Replacing the power switch board

**Note:** Turn off the computer and wait 3 to 5 minutes to let it cool down before removing the cover.

**Note:** It may be helpful to place the computer face-down on a soft flat surface for this procedure. Lenovo recommends that you use a blanket, towel, or other soft cloth to protect the computer screen from scratches or other damage.

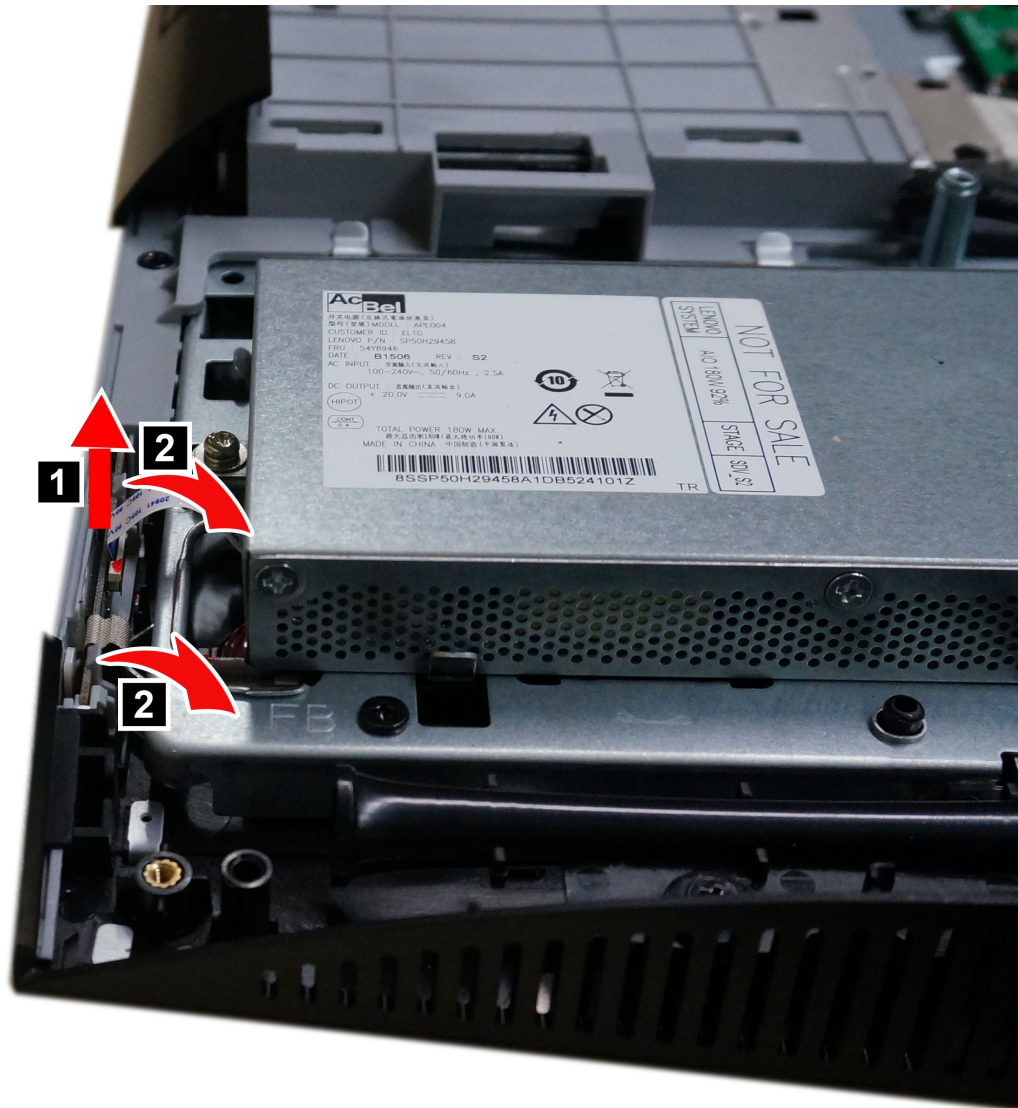
### To replace the power switch board

- Step 1. Remove any media (disks, CDs, DVDs, or memory cards) from the drives, shut down the operating system, and turn off the computer and all attached devices.
- Step 2. Unplug all power cords from electrical outlets.
- Step 3. Disconnect all cables attached to the computer. This includes power cords, input/output (I/O) cables, and any other cables that are connected to the computer. Refer to “Left and right view” and “Rear view” for help with locating the various connectors.
- Step 4. Remove the stand base. Refer to “Removing the stand base”.
- Step 5. Remove the foot cover. Refer to “Removing the foot cover”.
- Step 6. Remove the optical drive. Refer to “Replacing the optical drive”.
- Step 7. Remove the stand holder. Refer to “Removing the stand holder”.
- Step 8. Remove the middle cover. Refer to “Removing the middle cover”.



Step 9. Disconnect the data cable from the power switch board. **1**

Step 10. Push the locking pin outward to release the power switch board, and then lift up the power switch board to remove it. **2**



Step 11. To install the power switch board:

- a. Line up the notches on the new power switch board with the keys in the slot.
- b. Secure the power switch board with the locking pin.
- c. Connect the data cable to the power switch board.

Step 12. Reattach the middle cover, optical drive, stand holder, foot cover and stand base.

---

## Replacing the motherboard

**Note:** Turn off the computer and wait 3 to 5 minutes to let it cool down before removing the cover.

**Note:** It may be helpful to place the computer face-down on a soft flat surface for this procedure. Lenovo recommends that you use a blanket, towel, or other soft cloth to protect the computer screen from scratches or other damage.

## **To replace the motherboard:**

- Step 1. Remove any media (disks, CDs, DVDs, or memory cards) from the drives, shut down the operating system, and turn off the computer and all attached devices.
- Step 2. Unplug all power cords from electrical outlets.
- Step 3. Disconnect all cables attached to the computer. This includes power cords, input/output (I/O) cables, and any other cables that are connected to the computer. Refer to “Left and right view” and “Rear view” for help with locating the various connectors.
- Step 4. Remove the stand base. Refer to “Removing the stand base”.
- Step 5. Remove the foot cover. Refer to “Removing the foot cover”.
- Step 6. Remove the memory modules. Refer to “Replacing a memory module”.
- Step 7. Remove the optical drive. Refer to “Replacing the optical drive”.
- Step 8. Remove the stand holder. Refer to “Removing the stand holder”.
- Step 9. Remove the middle cover. Refer to “Removing the middle cover”.
- Step 10. Remove the EMI cover. Refer to “Removing the EMI cover”.
- Step 11. Remove the heat-sink. Refer to “Replacing the heat-sink”.
- Step 12. Remove the CPU. Refer to “Replacing the CPU”.
- Step 13. Remove the Wi-Fi card. Refer to “Replacing the Wi-Fi card”.
- Step 14. Unplug the following cables from connectors on the motherboard:
  - Converter cable
  - System fan power cable
  - Touch control board cable
  - Optical drive SATA cable (Red)
  - Hard disk drive SATA cable (Black)
  - Power supply cable
  - Hard disk drive power cable
  - Power switch board cable
  - Speaker system cable
  - Camera cable
  - LVDS cable

Step 15. Remove the seven screws that secure the motherboard to the chassis and lift the motherboard up to remove it.



Step 16. To install the new motherboard:

- a. Line up the holes on the new motherboard with the mounting holes chassis and place the new motherboard into position.
- b. Use the screws to secure the new motherboard to the chassis.
- c. Connect all the cables to the new motherboard.

Step 17. Install the following parts to the new motherboard:

- Wi-Fi card
- CPU
- Heat-sink
- Memory module

Step 18. Reattach the EMI cover, middle cover, optical drive, stand holder, foot cover and stand base.

---

## Removing the rear deco

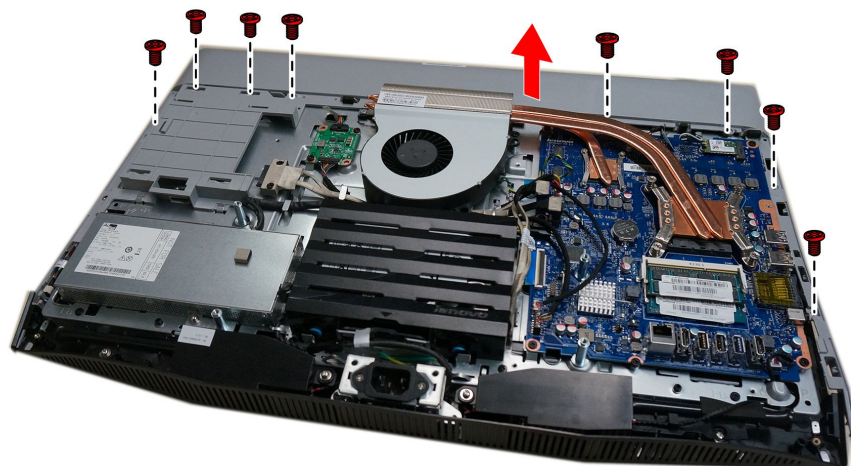
**Note:** Turn off the computer and wait 3 to 5 minutes to let it cool down before removing the cover.

**Note:** It may be helpful to place the computer face-down on a soft flat surface for this procedure. Lenovo recommends that you use a blanket, towel, or other soft cloth to protect the computer screen from scratches or other damage.

### To remove the rear deco:

- Step 1. Remove any media (disks, CDs, DVDs, or memory cards) from the drives, shut down the operating system, and turn off the computer and all attached devices.
- Step 2. Unplug all power cords from electrical outlets.
- Step 3. Disconnect all cables attached to the computer. This includes power cords, input/output (I/O) cables, and any other cables that are connected to the computer. Refer to “Left and right view” and “Rear view” for help with locating the various connectors.
- Step 4. Remove the stand base. Refer to “Removing the stand base”.
- Step 5. Remove the foot cover. Refer to “Removing the foot cover”.

- Step 6. Remove the optical drive. Refer to “Replacing the optical drive”.
- Step 7. Remove the stand holder. Refer to “Removing the stand holder”.
- Step 8. Remove the middle cover. Refer to “Removing the middle cover”.
- Step 9. Remove the screws that secure the rear deco to the chassis, and then slide the rear deco upward to remove it.



- Step 10. To reattach the rear deco:
- Line up the rear deco with the guide track on the chassis.
  - Secure the rear deco to the chassis with the screws.
- Step 11. Reattach the middle cover, stand holder, optical drive, foot cover and stand base.

---

## Replacing the camera

**Note:** Turn off the computer and wait 3 to 5 minutes to let it cool down before removing the cover.

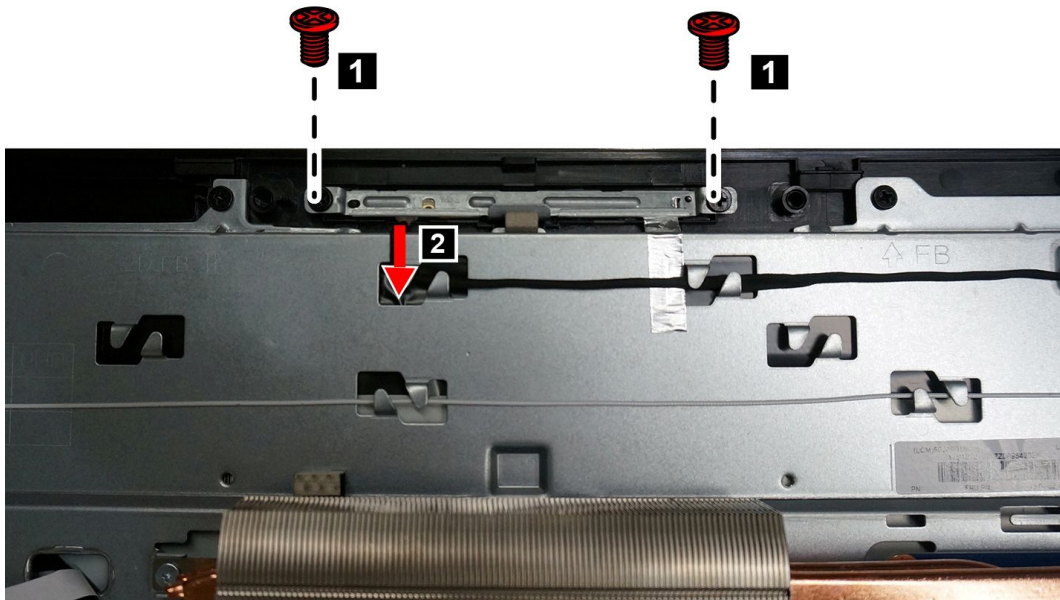
**Note:** It may be helpful to place the computer face-down on a soft flat surface for this procedure. Lenovo recommends that you use a blanket, towel, or other soft cloth to protect the computer screen from scratches or other damage.

### To replace the camera:

- Step 1. Remove any media (disks, CDs, DVDs, or memory cards) from the drives, shut down the operating system, and turn off the computer and all attached devices.
- Step 2. Unplug all power cords from electrical outlets.
- Step 3. Disconnect all cables attached to the computer. This includes power cords, input/output (I/O) cables, and any other cables that are connected to the computer. Refer to “Left and right view” and “Rear view” for help with locating the various connectors.
- Step 4. Remove the stand base. Refer to “Removing the stand base”.
- Step 5. Remove the foot cover. Refer to “Removing the foot cover”.
- Step 6. Remove the optical drive. Refer to “Replacing the optical drive”.
- Step 7. Remove the stand holder. Refer to “Removing the stand holder”.



- Step 8. Remove the middle cover. Refer to “Removing the middle cover”.
- Step 9. Remove the rear deco. Refer to “Replacing the rear deco”.
- Step 10. Remove the two screws that secure the camera to the chassis. **1**
- Step 11. Disconnect the camera data cable from the connector on the camera **2**, and then remove the camera.



- Step 12. To install the new camera:
- Connect the data cable to the new camera.
  - Slide the new camera into position, secure the camera to the front bezel with the locking pins.
- Step 13. Reattach the rear deco, middle cover, optical drive, stand holder, foot cover and stand base.

---

## Replacing the LCD panel module

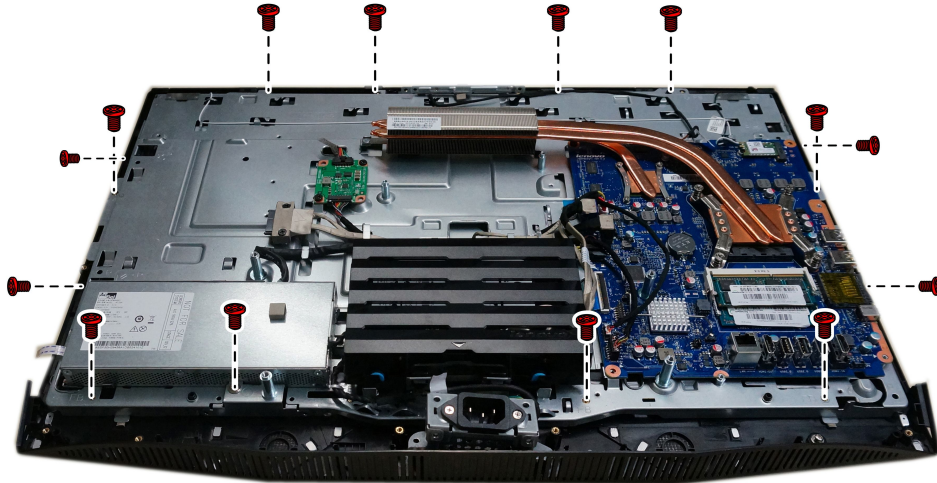
**Note:** Turn off the computer and wait 3 to 5 minutes to let it cool down before removing the cover.

**Note:** It may be helpful to place the computer face-down on a soft flat surface for this procedure. Lenovo recommends that you use a blanket, towel, or other soft cloth to protect the computer screen from scratches or other damage.

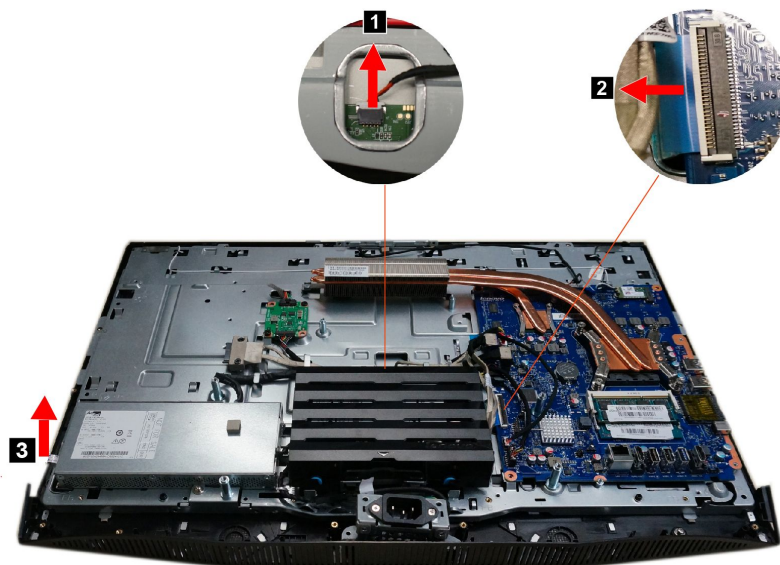
### To replace the LCD panel module:

- Step 1. Remove any media (disks, CDs, DVDs, or memory cards) from the drives, shut down the operating system, and turn off the computer and all attached devices.
- Step 2. Unplug all power cords from electrical outlets.
- Step 3. Disconnect all cables attached to the computer. This includes power cords, input/output (I/O) cables, and any other cables that are connected to the computer. Refer to “Left and right view” and “Rear view” for help with locating the various connectors.
- Step 4. Remove the stand base. Refer to “Removing the stand base”.
- Step 5. Remove the foot cover. Refer to “Removing the foot cover”.
- Step 6. Remove the optical drive. Refer to “Replacing the optical drive”.
- Step 7. Remove the stand holder. Refer to “Removing the stand holder”.

- Step 8. Remove the middle cover. Refer to “Removing the middle cover”.
- Step 9. Remove the EMI cover. Refer to “Removing the EMI cover”.
- Step 10. Remove the system fan. Refer to “Replacing the system fan”.
- Step 11. Remove the speaker system. Refer to “Replacing the speaker system”.
- Step 12. Remove the rear deco. Refer to “Removing the rear deco”.
- Step 13. Remove the camera. Refer to “Replacing the camera”.
- Step 14. Remove the fourteen screws that secure the chassis to the LCD panel module.



- Step 15. Disconnect the LVDS cable from connector as shown. **1**
- Step 16. Disconnect the touch control board cables from connector. **2**
- Step 17. Disconnect the power switch board cables from connector. Refer to “Replacing the power switch board”. **3**
- Step 18. Lift up the chassis from the bottom and disconnect the converter cable from the connector on the LCD panel.



- Step 19. Lift up the chassis to separate the chassis from the LCD panel module.

Step 20. To install the new the LCD panel module:

The new LCD panel module including:	<ol style="list-style-type: none"><li>1. LCD panel</li><li>2. LVDS cable</li><li>3. Touch control board and touch cable.</li></ol>
-------------------------------------	--

- a. Line up the chassis with new LCD panel module, place the chassis into position.
- b. Connect the converter cable to the connector on the LCD panel.
- c. Connect the LVDS cable to the connector on the motherboard.
- d. Connect the touch control board cables to the connector on the touch control board.
- e. Connect the power switch board cable to the connector on the power switch board.
- f. Secure the LCD panel to the chassis with the fourteen screws.
- g. Attach the camera to the new LCD module.
- h. Line up the rear deco with the guide track on the LCD module, and then slide the rear deco into position.
- i. Secure the rear deco to the new LCD module with the two screws.
- j. Secure the rear deco with the
- k. Line up the chassis and new LCD panel with the front bezel, and then place it into position.
- l. Attach the speaker module to the new LCD module.

Step 21. Reattach the system fan, EMI cover, middle cover, optical drive, computer stand, foot cover and stand base.





## Chapter 9. FRU lists

This chapter lists the information on the field replaceable units (FRUs) for ideacentre AIO 700–24ISH, AIO 700–24AGR, and AIO 700–27 desktop computers.

**Attention:** Be sure to read and understand all the safety information before replacing any FRUs.

**Notes:** FRUs that have a 1 or 2 in the CRU column are Customer Replaceable Units (CRUs).

- **1**– identifies parts that are fairly simple to replace, requiring few or no tools.
- **2**– identifies parts that are slightly more difficult to replace.
- **N**– identifies parts that are not to be replaced by the customer.

### FRUs for ideacentre AIO 700–24ISH and AIO 700–24AGR

Fru P/N	Description	Basic Name
00XD053	WLAN,MAIN/AUX,AIO 700-24	ANTENNA
00UW022	R7 A360 2G HDMI-IN/OUT 2D NODPK	BDPLANAR
00UW023	R7 A360 2G HDMI-IN/OUT 2D WIN	BDPLANAR
00UW024	UMA HDMI-IN/OUT 2D NO DPK	BDPLANAR
00UW025	UMA HDMI-IN/OUT 2D WIN DPK	BDPLANAR
00UW020	R9 A375 2G HDMI-IN/OUT 2D NODPK	BDPLANAR
00UW021	R9 A375 2G HDMI-IN/OUT 2D WIN	BDPLANAR
00XD797	SSD BEZEL,White,AIO 700-24	BEZEL
00XD796	SSD BEZEL,Black,AIO 700-24	BEZEL
00XD034	AC-IN Bracket,AIO 700-24	BRACKET
31026357	LW BLK1.8m UL CSA Power Cord(R)	CABLE
31026082	VL BLK1.8m BS Power Cord(R)	CABLE
31026140	VL BLK1.8m ANE Power Cord(R)	CABLE
31049512	Volex 1.8M C13 ITY power cord	CABLE
31049516	Volex 1.8M C13 SWI power cord	CABLE
31049521	LX(ASAP) 1.8M C13 UL power cord	CABLE
00XD030	SATA_HDD_ODD_Power	CABLE
00XD177	LVDS CABLE,AIO 700-24	CABLE
31026355	LW BLK1.8m VDE Power Cord(R)	CABLE
00XD178	CVTER_PANEL_FHD_LG,AIO 700-24ISH	CABLE
31026351	LW BLK1.8m KTL Power Cord(R)	CABLE
31049524	LX(ASAP) 1.8M C13 ANZ power cord	CABLE
31049522	LX(ASAP) 1.8M C13 EU power cord	CABLE
31031394	LW BLK1.8m SABS Power Cord(R)	CABLE
31028776	GS BLK1T1 1.8m CCC Power cord(R)	CABLE
00XD171	CVTER_MB,AIO 700-24	CABLE

31026145	VL BLK1.8m UL CSA Power Cord(R)	CABLE
31039730	Longwell 1.8M PSE C13 power cord(R)	CABLE
31038784	Longwell 1.8M 1.8m Brazilpower cord®	CABLE
31049513	Volex 1.8M C13 BR power cord	CABLE
31039729	Longwell 1.8M Denmark C13 power cord(R)	CABLE
31049514	Volex 1.8M C13 JPN power cord	CABLE
31026144	VL BLK1.8m VDE Power Cord(R)	CABLE
31040179	LX(ASAP) 1.8M CCC C13 power cord(R)	CABLE
31026146	VL BLK1.8m BSMI Power Cord(R)	CABLE
31049509	Volex 1.8M C13 SA power cord	CABLE
31026143	VL BLK1.8m KTL Power Cord(R)	CABLE
31039728	Longwell 1.8M Israel C13 power cord(R)	CABLE
31039732	Longwell 1.8M SEV C13 power cord(R)	CABLE
31049523	LX(ASAP) 1.8M C13 JPN power cord	CABLE
31026096	LW BLK1.8m BS Power Cord(R)	CABLE
00XD168	Power Board Cable,AIO 700-24	CABLE
31033216	LW BLK1.8m India power cord(R)	CABLE
31049511	Volex 1.8M C13 DEN power cord	CABLE
31036980	Longwell 1.8m C13 IRAM power cord(R)	CABLE
31026350	LW BLK1.8m ANE Power Cord(R)	CABLE
31049515	Volex 1.8M C13 LA power cord	CABLE
31026349	LW BLK1.8m BSMI Power Cord(R)	CABLE
00XD179	CVTER_PANEL_FHD_SAMSUNG,AIO 700-24ISH	CABLE
31039726	Longwell 1.8M Italy C13 power cord(R)	CABLE
31049510	Volex 1.8M C13 ISI power cord	CABLE
00XD182	SATA_HDD_SSD_PW,AIO 700-24	CABLE
00XD176	PSU_AC IN,AIO 700-24	CABLE
01AH303	CAMERA B7150 1080P 2MIC	CAMERA
01AJ752	AIO 700-24AGR FHD converter board	CARDPOP
5D10H22158	SDC LTM238HL02	DISPLAY
00PC201	DT_KYB,DOK5321(US)B-Silk USB,US	DT_KYB
00PC202	DT_KYB,DOK5321(US)W-Silk USB,US	DT_KYB
00KT205	System fan for AIO 700-24 AIO 700-27	FAN
00PC554	SSHS,1TB,7200,DT3,SATA3,STD	HDD_ASM
16200613	WD XL1000B WD10EZEX-08M2NA0 1TB HDD	HDD_ASM
16200688	ST Grenada BP2 ST1000DM003 1TB HDD	HDD_ASM
16200674	ST Pharaoh 4K Non-MC ST500DM002 500GHDD	HDD_ASM
16200544	WDXL500A WD5000AAKX-08U6AA0 500G HDD-LH	HDD_ASM
16200514	TSB Mars 4K 2TB DT01ACA200 -LH	HDD_ASM
00PC555	SSHS,2TB,7200,DT3,SATA3,STD	HDD_ASM

16200689	ST Grenada BP2 ST2000DM001 2TB HDD	HDD_ASM
45K0625	HDD,2TB,7200,DT3,SATA3,STD	HDD_ASM
00KT200	Heatsink 65W w/o BP AIO 700-24ISH	HEATSINK
00KT201	Heatsink 65+25W w/o BP AIO 700-24ISH	HEATSINK
00KT202	Heatsink 65+40W w/o BP AIO 700-24ISH	HEATSINK
00XD026	STAND,LIGHT SILVER	HINGE
00XD025	STAND,DARK SILVER	HINGE
25209194	Liteon SK-8861(FR) 2.4G KB-Black8	KYB_MOUSE
25209176	Liteon SK-8861(US-MY) 2.4G KB-Black8	KYB_MOUSE
25209151	Sunrex EKB-10YA(RU) W-Silk USB KB-LVT8	KYB_MOUSE
25209178	Liteon SK-8861(TH) 2.4G KB-Black8	KYB_MOUSE
25209139	Sunrex EKB-10YA(US-EU) B-S USB KB-LVT8	KYB_MOUSE
25211005	Liteon SK-8861(IL) 2.4G KB-White8	KYB_MOUSE
25209177	Liteon SK-8861(TW) 2.4G KB-Black8	KYB_MOUSE
25209137	Sunrex EKB-10YA(PT) B-Silk USB KB-LVT8	KYB_MOUSE
25209159	Sunrex EKB-10YA(SP) W-Silk USB KB-LVT8	KYB_MOUSE
25209138	Sunrex EKB-10YA(BE-EN) B-S USB KB-LVT8	KYB_MOUSE
25210994	Liteon SK-8861(GB) 2.4G KB-White8	KYB_MOUSE
25209175	Liteon SK-8861(US) 2.4G KB-Black8	KYB_MOUSE
25209112	Primax KB4721(US) B-Silk USB KB-LVT8	KYB_MOUSE
25209122	Sunrex EKB-10YA(AR) B-Silk USB KB-LVT8	KYB_MOUSE
25209184	Liteon SK-8861(LA) 2.4G KB-Black8	KYB_MOUSE
25209198	Liteon SK-8861(KR) 2.4G KB-Black8	KYB_MOUSE
25211003	Liteon SK-8861(SL) 2.4G KB-White8	KYB_MOUSE
25209153	Sunrex EKB-10YA(Nordic) W-S USB KB-LVT8	KYB_MOUSE
25209180	Liteon SK-8861(US-IN) 2.4G KB-Black8	KYB_MOUSE
25210998	Liteon SK-8861(SA) 2.4G KB-White8	KYB_MOUSE
25211013	Liteon SK-8861(PT) 2.4G KB-White8	KYB_MOUSE
25209163	Sunrex EKB-10YA(FR) W-Silk USB KB-LVT8	KYB_MOUSE
25209181	Liteon SK-8861(RU) 2.4G KB-Black8	KYB_MOUSE
25209128	Sunrex EKB-10YA(IT) B-Silk USB KB-LVT8	KYB_MOUSE
25209192	Liteon SK-8861(IT) 2.4G KB-Black8	KYB_MOUSE
25211004	Liteon SK-8861(IT) 2.4G KB-White8	KYB_MOUSE
25209119	Sunrex EKB-10YA(UK) B-Silk USB KB-LVT8	KYB_MOUSE
25209189	Liteon SK-8861(TR) 2.4G KB-Black8	KYB_MOUSE
25210989	Liteon SK-8861(TW) 2.4G KB-White8	KYB_MOUSE
25209202	Liteon SK-8861(BE-EN) 2.4G KB-Black8	KYB_MOUSE
25209117	Sunrex EKB-10YA(IN) B-Silk USB KB-LVT8	KYB_MOUSE
25211010	Liteon SK-8861(KR) 2.4G KB-White8	KYB_MOUSE
25209164	Sunrex EKB-10YA(GK) W-Silk USB KB-LVT8	KYB_MOUSE

25210993	Liteon SK-8861(RU) 2.4G KB-White8	KYB_MOUSE
25209187	Liteon SK-8861(CH) 2.4G KB-Black8	KYB_MOUSE
25209129	Sunrex EKB-10YA(HB) B-Silk USB KB-LVT8	KYB_MOUSE
25209195	Liteon SK-8861(GR) 2.4G KB-Black8	KYB_MOUSE
25211011	Liteon SK-8861(JP) 2.4G KB-White8	KYB_MOUSE
25209190	Liteon SK-8861(ES) 2.4G KB-Black8	KYB_MOUSE
25211016	Liteon SM-8861(WW) 2.4G Mouse White	KYB_MOUSE
25209114	Sunrex EKB-10YA(TW) B-Silk USB KB-LVT8	KYB_MOUSE
25209124	Sunrex EKB-10YA(GE) B-Silk USB KB-LVT8	KYB_MOUSE
25210995	Liteon SK-8861(Nordic) 2.4G KB-White8	KYB_MOUSE
25209179	Liteon SK-8861(CS-SK) 2.4G KB-Black8	KYB_MOUSE
25209167	Sunrex EKB-10YA(KR) W-Silk USB KB-LVT8	KYB_MOUSE
25209188	Liteon SK-8861(DE) 2.4G KB-Black8	KYB_MOUSE
25209135	Sunrex EKB-10YA(JP) B-Silk USB KB-LVT8	KYB_MOUSE
25209121	Sunrex EKB-10YA(LA) B-Silk USB KB-LVT8	KYB_MOUSE
25209132	Sunrex EKB-10YA(HG) B-Silk USB KB-LVT8	KYB_MOUSE
25210987	Liteon SK-8861(US) 2.4G KB-White8	KYB_MOUSE
25209158	Sunrex EKB-10YA(TR) W-Silk USB KB-LVT8	KYB_MOUSE
25209186	Liteon SK-8861(SA) 2.4G KB-Black8	KYB_MOUSE
25209145	Sunrex EKB-10YA(US) W-Silk USB KB-LVT8	KYB_MOUSE
25209147	Sunrex EKB-10YA(TW) W-Silk USB KB-LVT8	KYB_MOUSE
25209127	Sunrex EKB-10YA(SL) B-Silk USB KB-LVT8	KYB_MOUSE
25209156	Sunrex EKB-10YA(SW) W-Silk USB KB-LVT8	KYB_MOUSE
25209120	Sunrex EKB-10YA(Nordic) B-S USB KB-LVT8	KYB_MOUSE
25211008	Liteon SK-8861(HU) 2.4G KB-White8	KYB_MOUSE
25209182	Liteon SK-8861(GB) 2.4G KB-Black8	KYB_MOUSE
25210990	Liteon SK-8861(TH) 2.4G KB-White8	KYB_MOUSE
25209196	Liteon SK-8861(HU) 2.4G KB-Black8	KYB_MOUSE
25209130	Sunrex EKB-10YA(FR) B-Silk USB KB-LVT8	KYB_MOUSE
25211006	Liteon SK-8861(FR) 2.4G KB-White8	KYB_MOUSE
25209154	Sunrex EKB-10YA(LA) W-Silk USB KB-LVT8	KYB_MOUSE
25209166	Sunrex EKB-10YA(BG) W-Silk USB KB-LVT8	KYB_MOUSE
25209199	Liteon SK-8861(JP) 2.4G KB-Black8	KYB_MOUSE
25209150	Sunrex EKB-10YA(IN) W-Silk USB KB-LVT8	KYB_MOUSE
25209169	Sunrex EKB-10YA(EN-FR) W-S USB KB-LVT8	KYB_MOUSE
25210996	Liteon SK-8861(LA) 2.4G KB-White8	KYB_MOUSE
25209203	Liteon SK-8861(US-EU) 2.4G KB-Black8	KYB_MOUSE
25209161	Sunrex EKB-10YA(IT) W-Silk USB KB-LVT8	KYB_MOUSE
25209116	Sunrex EKB-10YA(CZ-SL) B-S USB KB-LVT8	KYB_MOUSE
25210999	Liteon SK-8861(CH) 2.4G KB-White8	KYB_MOUSE

25209172	Sunrex EKB-10YA(US-EU) W-S USB KB-LVT8	KYB_MOUSE
25209168	Sunrex EKB-10YA(JP) W-Silk USB KB-LVT8	KYB_MOUSE
25209152	Sunrex EKB-10YA(UK) W-Silk USB KB-LVT8	KYB_MOUSE
25209160	Sunrex EKB-10YA(SL) W-Silk USB KB-LVT8	KYB_MOUSE
25209131	Sunrex EKB-10YA(GK) B-Silk USB KB-LVT8	KYB_MOUSE
25209165	Sunrex EKB-10YA(HG) W-Silk USB KB-LVT8	KYB_MOUSE
25209125	Sunrex EKB-10YA(TR) B-Silk USB KB-LVT8	KYB_MOUSE
25209193	Liteon SK-8861(IL) 2.4G KB-Black8	KYB_MOUSE
25209111	Sunrex EKB-10YA(US) B-Silk USB KB-LVT8	KYB_MOUSE
25209115	Sunrex EKB-10YA(TH) B-Silk USB KB-LVT8	KYB_MOUSE
25211009	Liteon SK-8861(BG) 2.4G KB-White8	KYB_MOUSE
25209157	Sunrex EKB-10YA(GE) W-Silk USB KB-LVT8	KYB_MOUSE
25210997	Liteon SK-8861(LA-AR) 2.4G KB-White8	KYB_MOUSE
25209149	Sunrex EKB-10YA(CZ-SL) W-S USB KB-LVT8	KYB_MOUSE
25211012	Liteon SK-8861(EN-FR) 2.4G KB-White8	KYB_MOUSE
25209185	Liteon SK-8861(LA-AR) 2.4G KB-Black8	KYB_MOUSE
25210988	Liteon SK-8861(US-MY) 2.4G KB-White8	KYB_MOUSE
25211002	Liteon SK-8861(ES) 2.4G KB-White8	KYB_MOUSE
25209183	Liteon SK-8861(Nordic) 2.4G KB-Black8	KYB_MOUSE
25209118	Sunrex EKB-10YA(RU) B-Silk USB KB-LVT8	KYB_MOUSE
25209200	Liteon SK-8861(EN-FR) 2.4G KB-Black8	KYB_MOUSE
25209197	Liteon SK-8861(BG) 2.4G KB-Black8	KYB_MOUSE
25209134	Sunrex EKB-10YA(KR) B-Silk USB KB-LVT8	KYB_MOUSE
25209136	Sunrex EKB-10YA(EN-FR) B-S USB KB-LVT8	KYB_MOUSE
25209126	Sunrex EKB-10YA(SP) B-Silk USB KB-LVT8	KYB_MOUSE
25211000	Liteon SK-8861(DE) 2.4G KB-White8	KYB_MOUSE
25209123	Sunrex EKB-10YA(SW) B-Silk USB KB-LVT8	KYB_MOUSE
25203464	Liteon SM-8861(WW) Mouse Black	KYB_MOUSE
25209155	Sunrex EKB-10YA(AR) W-Silk USB KB-LVT8	KYB_MOUSE
25209162	Sunrex EKB-10YA(HB) W-Silk USB KB-LVT8	KYB_MOUSE
25201322	Sunrex LXH-EMS-10ZA W-Silk Mouse	KYB_MOUSE
25209148	Sunrex EKB-10YA(TH) W-Silk USB KB-LVT8	KYB_MOUSE
25201068	Liteon LXH-SM-8825 W-Silk Mouse	KYB_MOUSE
25211015	Liteon SK-8861(US-EU) 2.4G KB-White8	KYB_MOUSE
25209191	Liteon SK-8861(SL) 2.4G KB-Black8	KYB_MOUSE
25209171	Sunrex EKB-10YA(BE-EN) W-S USB KB-LVT8	KYB_MOUSE
25210991	Liteon SK-8861(CS-SK) 2.4G KB-White8	KYB_MOUSE
25209146	Primax KB4721(US) W-Silk USB KB-LVT8	KYB_MOUSE
25211014	Liteon SK-8861(BE-EN) 2.4G KB-White8	KYB_MOUSE
25211001	Liteon SK-8861(TR) 2.4G KB-White8	KYB_MOUSE

25209201	Liteon SK-8861(PT) 2.4G KB-Black8	KYB_MOUSE
25209133	Sunrex EKB-10YA(BG) B-Silk USB KB-LVT8	KYB_MOUSE
25209170	Sunrex EKB-10YA(PT) W-Silk USB KB-LVT8	KYB_MOUSE
25210992	Liteon SK-8861(US-IN) 2.4G KB-White8	KYB_MOUSE
25211007	Liteon SK-8861(GR) 2.4G KB-White8	KYB_MOUSE
00XD800	ODD Fixer Latch,AIO 700-24	LATCH
31502869	LX(ASAP) 1.8M C13 ARGENTINA power cord	LINECORD
31502867	LX(ASAP) 1.8M C13 BSMT power cord	LINECORD
31502864	LX(ASAP) 1.8M C13 ITALY power cord	LINECORD
31502865	LX(ASAP) 1.8M C13 SABS power cord	LINECORD
31502870	LX(ASAP) 1.8M C13 KOREA power cord	LINECORD
31502863	LX(ASAP) 1.8M C13 DANMARK power cord	LINECORD
5L60J34355	Thailand ,1.8M,3P,LUX(ASAP)	LINECORD
31502866	LX(ASAP) 1.8M C13 ISRAEL power cord	LINECORD
31502862	LX(ASAP) 1.8M C13 BRAZIL power cord	LINECORD
31502871	LX(ASAP) 1.8M C13 INDIA power cord	LINECORD
31502861	LX(ASAP) 1.8M C13 UK power cord	LINECORD
31502868	LX(ASAP) 1.8M C13 Switzerland power cord	LINECORD
00XD050	POWER BOARD	MECH_ASM
00XD051	SSD,BLACK,AIO 700-24	MECH_ASM
00XD033	MB Shielding,AIO 700-24	MECH_ASM
00XD052	SSD,WHITE,AIO 700-24	MECH_ASM
00XD047	FHD,White,2d,NT,AIO 700-24	MECH_ASM
00XD031	ODD Bezel Black,AIO 700-24	MECH_ASM
00XD045	FHD,Black,2d,NT,AIO 700-24	MECH_ASM
00XD023	Slide Cover Black,AIO 700-24	MECH_ASM
00XD027	HDD CAGE	MECH_ASM
00XD029	Back Cover White,AIO 700-24	MECH_ASM
00XD032	ODD Bezel White,AIO 700-24	MECH_ASM
00XD024	Slide Cover White,AIO 700-24	MECH_ASM
00XD028	Back Cover Black,AIO 700-24	MECH_ASM
00XD055	SIDE IO CVR,WHITE, AIO 700-24	MECH_ASM
00XD184	MIDDLE CVR L_SILVER, AIO 700-24ISH	MECH_ASM
00XD183	MIDDLE CVR D_SILVER, AIO 700-24ISH	MECH_ASM
00XD054	SIDE IO CVR,BLACK, AIO 700-24	MECH_ASM
00XD036	CAMERA 1080P 2D	MECH_ASM
00XD064	2D CAMERA BKT+GASKET AIO 700-24ISH	MECH_ASM
00XD799	SSD Holder,AIO 700-24	MECH_ASM
1100635	MT16KTF1G64HZ-1G6E1 8G D3L-1600S MEMORY	MEMORY
03T7117	SODIMM,4G,DDR3L,1600	MEMORY

1100983	M471B5674QH0-YK0 2GB DDR3L 1600 Sodimm	MEMORY
1100986	HMT41GS6BFR8A-PB 8GB DDR3L 1600 Sodimm	MEMORY
1101012	Mic_R D9QBJ ?8GB D3L-1600 Sodimm	MEMORY
03T7118	SODIMM,8G,DDR3L,1600	MEMORY
1100985	HMT451S6BFR8A-PB 4GB DDR3L 1600 Sodimm	MEMORY
1100956	MT4KTF25664HZ-1G6E1 2GB 1600 Sodimm	MEMORY
1100957	MT8KTF51264HZ-1G6E1 4GB 1600 Sodimm	MEMORY
03T7116	SODIMM,2G,DDR3L,1600	MEMORY
00PC593	Doking M680B W-Silk USB MC WHT	MOUSE
00PC592	Doking M680B B-Silk USB MC BLK	MOUSE
00FC442	SMD,DT,SATA,9.5mm,x8,w/o bezel	OPT_DRIVE
00XG043	EX-ODD DVD Burner DB65	OPT_DRIVE
54Y8945	PWR_SUPPLY,100-240Vac,150W	PWR_SUPPLY
54Y8946	PWR_SUPPLY,100-240Vac,180W	PWR_SUPPLY
00XD813	SSD Shielding, AIO 700-24	SHIELD
1101099	AMD A10-7800 3.5/4M/4C/2133/FM2+ 65 CPU	SP
1101101	AMD A8-7600 3.1/4M/4C/65 CPU	SP
1101102	AMD A6-7400K 3.5/1M/2C/65W CPU	SP
01AG007	AMD A8-8650 3.2GHz 65W 4C	SP
01AG008	AMD A6-8550 3.7GHz 65W 2C	SP
01AG006	AMD A10-8750 3.6GHz 65W 4C	SP
00XD035	3W speaker, AIO 700-24	SPEAKERINT
00KT030	120G,2.5",7mm,SATA6G, SMSG, STD	SSD_ASM
00KT031	192G,2.5",7mm,SATA6G, SMSG, STD	SSD_ASM
00XD022	Base Stand,Light Silver	STAND
00XD021	Base Stand,Dark Silver	STAND
00JT461	Wireless,CMB,CBT,43162V2	WIRELESS
00JT525	Wireless,CMB,LTN,NFA435 AGN	WIRELESS

NO.	FRU	CRU No.
1	Foot cover	1
2	RAM Shield	1
3	Stand base	1
4	Stand holder	1
5	HDD	1
	HDD EMI Shield	1
	HDD bracket	1
6	RAM	1
7	Rear cover	2
8	ODD cable ( including HDD cable)	N

9	ODD Bazel	1
	ODD	1
11	Mainboard Frame	N
12	Heat Sink	N
13	Fan	N
14	Power supply	N
15	Power connector bracket	N
16	Power connector	N
17	CPU	N
18	Speaker	N
19	Motherboard	N
	CPU Holder	N
	CMOS Battery	N
	Maylar	N
	Northbridge heat sink	N
	Thermal paste	N
20	Camera Module=Camera+Camera Holder	N
	Camera	N
	Camera rubber	N
	Camera Holder	N
	Microphone rubber*2	N
21	Microphone board	N
22	Microphone cable	N
23	Wi-Fi card	N
24	LCD Module=LCD+LVDS Cable+Converter Cable to LCD+Power Switch Cable+Chassis	N
	LCD	N
	LVDS	N
	Power switch cable	N
	Converter Cable to LCD	N
	A cover	N
	Glass	N
	Chassis	N
25	Power switch Cable	N
26	power switch board	2
27*	SSD*(Optional, Not Existed in Sample)	2
	SSD Bazel	2
	SSD Housing	2
	SSD Cable(including HDD cable, for SSD configuration model)	N



29	Keyboard	1
30	Mouse	1
31	Power cord	1
32	RF Antenna FRU=RF cable+Antenna+Adhesive	N
	Rf cable	N
	Antenna	N
	Adhesive	N
33	I/O Bracket	N
34	Rear Deco	N
35	Invertor board	N

## FRUs for ideacentre AIO 700-27ISH

Fru P/N	Description	Basic Name
00XD068	WLAN,MAIN/AUX, AIO 700-27ISH	ANTENNA
00UW031	GTX950A 2G 3D UHD WIN DPK	BDPLANAR
00UW030	GTX950A 2G 3D UHD NO DPK	BDPLANAR
00UW017	GTX950A 2G 3D FHD WIN DPK	BDPLANAR
00UW016	GTX950A 2G 3D FHD NO DPK	BDPLANAR
00UW010	GTX950A 2G 2D FHD NO DPK	BDPLANAR
00UW011	GTX950A 2G 2D FHD WIN DPK	BDPLANAR
00XD798	SSD BEZEL,Black,AIO 700-27	BEZEL
00XD034	AC-IN Bracket,AIO 700-24	BRACKET
00XD171	CVTER_MB,AIO 700-24	CABLE
31039726	Longwell 1.8M Italy C13 power cord(R)	CABLE
31049523	LX(ASAP) 1.8M C13 JPN power cord	CABLE
31049521	LX(ASAP) 1.8M C13 UL power cord	CABLE
00XD173	LVDS CABLE,AIO 700-27ISH	CABLE
31026357	LW BLK1.8m UL CSA Power Cord(R)	CABLE
31039728	Longwell 1.8M Israel C13 power cord(R)	CABLE
31049512	Volex 1.8M C13 ITY power cord	CABLE
31039732	Longwell 1.8M SEV C13 power cord(R)	CABLE
31026350	LW BLK1.8m ANE Power Cord(R)	CABLE
00XD321	CVTER_PANEL_UHD_AUO,AIO 700-27ISH	CABLE
31049510	Volex 1.8M C13 ISI power cord	CABLE
31039729	Longwell 1.8M Denmark C13 power cord(R)	CABLE
31049509	Volex 1.8M C13 SA power cord	CABLE
31026143	VL BLK1.8m KTL Power Cord(R)	CABLE
31026096	LW BLK1.8m BS Power Cord(R)	CABLE
00XD322	EDP_40 PIN CABLE,AIO 700-27	CABLE
31036980	LW 1.8m C13 IRAM power cord(R)	CABLE
31049515	Volex 1.8M C13 LA power cord	CABLE
31026145	VL BLK1.8m UL CSA Power Cord(R)	CABLE
31026349	LW BLK1.8m BSMI Power Cord(R)	CABLE
31038784	LW 1.8m Brazil power cord(R)	CABLE
31049513	Volex 1.8M C13 BR power cord	CABLE
00XD174	CVTER_PANEL_FHD,AIO 700-27ISH	CABLE
31049522	LX(ASAP) 1.8M C13 EU power cord	CABLE
31033216	LW BLK1.8m India power cord(R)	CABLE
00XD172	POWER BOARD CABLE,AIO 700-27ISH	CABLE
31026355	LW BLK1.8m VDE Power Cord(R)	CABLE

31049516	Volex 1.8M C13 SWI power cord	CABLE
31040179	LX(ASAP) 1.8M CCC C13 power cord(R)	CABLE
00XD061	SATA_HDD_ODD_PW,AIO 700-27ISH	CABLE
31049524	LX(ASAP) 1.8M C13 ANZ power cord	CABLE
31026082	VL BLK1.8m BS Power Cord(R)	CABLE
31049514	Volex 1.8M C13 JPN power cord	CABLE
31026351	LW BLK1.8m KTL Power Cord(R)	CABLE
31049511	Volex 1.8M C13 DEN power cord	CABLE
31026144	VL BLK1.8m VDE Power Cord(R)	CABLE
00XD318	DUAL MIC Cable,AIO 700-27	CABLE
31028776	GS BLK1T1 1.8m CCC Power cord(R)	CABLE
31026140	VL BLK1.8m ANE Power Cord(R)	CABLE
31026146	VL BLK1.8m BSMI Power Cord(R)	CABLE
31039730	Longwell 1.8M PSE C13 power cord(R)	CABLE
31031394	LW BLK1.8m SABS Power Cord(R)	CABLE
00XD176	PSU_AC IN,AIO 700-24	CABLE
01AH303	CAMERA AIO 700-27ISHSHSH 1080P 2MIC	CAMERA
00PC579	Intel F200 FW2.50 3D CAM	CAMERA
01AJ752	AIO 700-24AGR FHD converter board	CARDPOP
01AJ754	AIO 700-24ISH UHD converter board	CARDPOP
00PC201	DT_KYB,DOK5321(US)B-Silk USB,US	DT_KYB
00KT205	System fan for AIO 700-24, AIO 700-27	FAN
00PC555	SSHS,2TB,7200,DT3,SATA3,STD	HDD_ASM
16200689	ST Grenada BP2 ST2000DM001 2TB HDD	HDD_ASM
16200674	ST Pharaoh 4K Non-MC ST500DM002 500GHDD	HDD_ASM
16200613	WD XL1000B WD10EZEX-08M2NA0 1TB HDD	HDD_ASM
00PC554	SSHS,1TB,7200,DT3,SATA3,STD	HDD_ASM
16200688	ST Grenada BP2 ST1000DM003 1TB HDD	HDD_ASM
45K0625	HDD,2TB,7200,DT3,SATA3,STD	HDD_ASM
25209201	Liteon SK-8861(PT) 2.4G KB-Black8	KYB_MOUSE
25209194	Liteon SK-8861(FR) 2.4G KB-Black8	KYB_MOUSE
25209127	Sunrex EKB-10YA(SL) B-Silk USB KB-LVT8	KYB_MOUSE
25209130	Sunrex EKB-10YA(FR) B-Silk USB KB-LVT8	KYB_MOUSE
25209182	Liteon SK-8861(GB) 2.4G KB-Black8	KYB_MOUSE
25209185	Liteon SK-8861(LA-AR) 2.4G KB-Black8	KYB_MOUSE
25209192	Liteon SK-8861(IT) 2.4G KB-Black8	KYB_MOUSE
25209200	Liteon SK-8861(EN-FR) 2.4G KB-Black8	KYB_MOUSE
25209135	Sunrex EKB-10YA(JP) B-Silk USB KB-LVT8	KYB_MOUSE
25209128	Sunrex EKB-10YA(IT) B-Silk USB KB-LVT8	KYB_MOUSE
25203464	Liteon SM-8861(WW) Mouse Black	KYB_MOUSE

25209132	Sunrex EKB-10YA(HG) B-Silk USB KB-LVT8	KYB_MOUSE
25209123	Sunrex EKB-10YA(SW) B-Silk USB KB-LVT8	KYB_MOUSE
25209195	Liteon SK-8861(GR) 2.4G KB-Black8	KYB_MOUSE
25209203	Liteon SK-8861(US-EU) 2.4G KB-Black8	KYB_MOUSE
25209116	Sunrex EKB-10YA(CZ-SL) B-S USB KB-LVT8	KYB_MOUSE
25209179	Liteon SK-8861(CS-SK) 2.4G KB-Black8	KYB_MOUSE
25209181	Liteon SK-8861(RU) 2.4G KB-Black8	KYB_MOUSE
25209199	Liteon SK-8861(JP) 2.4G KB-Black8	KYB_MOUSE
25209180	Liteon SK-8861(US-IN) 2.4G KB-Black8	KYB_MOUSE
25209111	Sunrex EKB-10YA(US) B-Silk USB KB-LVT8	KYB_MOUSE
25203466	Liteon SM-8861 Mouse(MY) Black	KYB_MOUSE
25209118	Sunrex EKB-10YA(RU) B-Silk USB KB-LVT8	KYB_MOUSE
25209115	Sunrex EKB-10YA(TH) B-Silk USB KB-LVT8	KYB_MOUSE
25209190	Liteon SK-8861(ES) 2.4G KB-Black8	KYB_MOUSE
25209131	Sunrex EKB-10YA(GK) B-Silk USB KB-LVT8	KYB_MOUSE
25209121	Sunrex EKB-10YA(LA) B-Silk USB KB-LVT8	KYB_MOUSE
25209126	Sunrex EKB-10YA(SP) B-Silk USB KB-LVT8	KYB_MOUSE
25209196	Liteon SK-8861(HU) 2.4G KB-Black8	KYB_MOUSE
25205773	Liteon SM-8861(JP) Mouse-Black	KYB_MOUSE
25209136	Sunrex EKB-10YA(EN-FR) B-S USB KB-LVT8	KYB_MOUSE
25209188	Liteon SK-8861(DE) 2.4G KB-Black8	KYB_MOUSE
25209184	Liteon SK-8861(LA) 2.4G KB-Black8	KYB_MOUSE
25209175	Liteon SK-8861(US) 2.4G KB-Black8	KYB_MOUSE
25209117	Sunrex EKB-10YA(IN) B-Silk USB KB-LVT8	KYB_MOUSE
25209137	Sunrex EKB-10YA(PT) B-Silk USB KB-LVT8	KYB_MOUSE
25209186	Liteon SK-8861(SA) 2.4G KB-Black8	KYB_MOUSE
25209119	Sunrex EKB-10YA(UK) B-Silk USB KB-LVT8	KYB_MOUSE
25209187	Liteon SK-8861(CH) 2.4G KB-Black8	KYB_MOUSE
25209177	Liteon SK-8861(TW) 2.4G KB-Black8	KYB_MOUSE
25209122	Sunrex EKB-10YA(AR) B-Silk USB KB-LVT8	KYB_MOUSE
25209138	Sunrex EKB-10YA(BE-EN) B-S USB KB-LVT8	KYB_MOUSE
25209120	Sunrex EKB-10YA(Nordic) B-S USB KB-LVT8	KYB_MOUSE
25209134	Sunrex EKB-10YA(KR) B-Silk USB KB-LVT8	KYB_MOUSE
25209193	Liteon SK-8861(IL) 2.4G KB-Black8	KYB_MOUSE
25209176	Liteon SK-8861(US-MY) 2.4G KB-Black8	KYB_MOUSE
25209139	Sunrex EKB-10YA(US-EU) B-S USB KB-LVT8	KYB_MOUSE
25209191	Liteon SK-8861(SL) 2.4G KB-Black8	KYB_MOUSE
25209183	Liteon SK-8861(Nordic) 2.4G KB-Black8	KYB_MOUSE
25209197	Liteon SK-8861(BG) 2.4G KB-Black8	KYB_MOUSE
25209129	Sunrex EKB-10YA(HB) B-Silk USB KB-LVT8	KYB_MOUSE

25209198	Liteon SK-8861(KR) 2.4G KB-Black8	KYB_MOUSE
25209178	Liteon SK-8861(TH) 2.4G KB-Black8	KYB_MOUSE
25209112	Primax KB4721(US) B-Silk USB KB-LVT8	KYB_MOUSE
25209133	Sunrex EKB-10YA(BG) B-Silk USB KB-LVT8	KYB_MOUSE
25209124	Sunrex EKB-10YA(GE) B-Silk USB KB-LVT8	KYB_MOUSE
25209202	Liteon SK-8861(BE-EN) 2.4G KB-Black8	KYB_MOUSE
25209189	Liteon SK-8861(TR) 2.4G KB-Black8	KYB_MOUSE
25209125	Sunrex EKB-10YA(TR) B-Silk USB KB-LVT8	KYB_MOUSE
25209114	Sunrex EKB-10YA(TW) B-Silk USB KB-LVT8	KYB_MOUSE
00XD800	ODD Fixer Latch,AIO 700-24	LATCH
31502861	LX(ASAP) 1.8M C13 UK power cord	LINECORD
31502866	LX(ASAP) 1.8M C13 ISRAEL power cord	LINECORD
31502862	LX(ASAP) 1.8M C13 BRAZIL power cord	LINECORD
31502867	LX(ASAP) 1.8M C13 BSMI power cord	LINECORD
31502864	LX(ASAP) 1.8M C13 ITALY power cord	LINECORD
31502868	LX(ASAP) 1.8M C13 Switzerland power cord	LINECORD
31502865	LX(ASAP) 1.8M C13 SABS power cord	LINECORD
31502869	LX(ASAP) 1.8M C13 ARGENTINA power cord	LINECORD
31502871	LX(ASAP) 1.8M C13 INDIA power cord	LINECORD
31502863	LX(ASAP) 1.8M C13 DANMARK power cord	LINECORD
31502870	LX(ASAP) 1.8M C13 KOREA power cord	LINECORD
5L60J34355	Thailand ,1.8M,3P,LUX(ASAP)	LINECORD
00XD320	UHD,Black,3d,T,AIO 700-27	MECH_ASM
00XD065	FHD,BLACK,2D,T,AIO 700-27ISH	MECH_ASM
00XD319	FHD,Black,3d,T,AIO 700-27	MECH_ASM
00XD027	HDD CAGE	MECH_ASM
00XD037	CAMERA 1080P 3D	MECH_ASM
00XD050	POWER BOARD	MECH_ASM
00XD060	BACK COVER BLACK,AIO 700-27ISH	MECH_ASM
00XD063	MB SHIELDING,AIO 700-27ISH	MECH_ASM
00XD066	FHD,BLACK,2D,NT,AIO 700-27ISH	MECH_ASM
00XD067	SSD BKT W/BEZEL,BLACK,AIO 700-27ISH	MECH_ASM
00XD175	MIDDLE CVR D_SILVER, AIO 700-27ISH	MECH_ASM
00XD058	SLIDE COVER BLACK, AIO 700-27ISH	MECH_ASM
00XD069	SIDE IO CVR,BLACK, AIO 700-27ISH	MECH_ASM
00XD036	CAMERA 1080P 2D	MECH_ASM
00XD064	2D CAMERA BKT+GASKET AIO 700-24ISH	MECH_ASM
00XD799	SSD Holder, AIO 700-24	MECH_ASM
03T7414	8G,SODIMM, DDR4, 2133MHz	MEMORY
03T7413	4G,SODIMM,DDR4,2133MHz	MEMORY

03T7415	16G,SODIMM,DDR4,2133MHz	MEMORY
01AH400	Microphone Dualch Mic 12D B5B	MICROPHONE
00PC592	Doking M680B B-Silk USB MC BLK	MOUSE
00FC442	SMD,DT,SATA,9.5mm,x8,w/o bezel	OPT_DRIVE
00XG043	EX-ODD DVD Burner DB65	OPT_DRIVE
54Y8943	PWR_SUPPLY,100-240Vac,200W	PWR_SUPPLY
54Y8946	PWR_SUPPLY,100-240Vac,180W	PWR_SUPPLY
00XD813	SSD Shielding,AIO 700-24	SHIELD
03T7446	Intel Core i7-6700 3.4G 4C	SP
03T7445	Intel Core i5-6400 2.7G 4C	SP
01AG017	Intel Core i3-6100 3.7G 2C	SP
00XD035	3W speaker,AIO 700-24	SPEAKERINT
00KT030	120G,2.5",7mm,SATA6G,SAMSG,STD	SSD_ASM
00KT031	192G,2.5",7mm,SATA6G,SAMSG,STD	SSD_ASM
00XD059	HINGE STAND,DARK SILVER,AIO 700-27ISH	STAND
00XD057	BASE STAND,DARK SILVER,AIO 700-27ISH	STAND
11202583	FOX BCM20792M NFC I2C Module	SUBCARD
00JT497	Wireless,CMB,IN,3165 ac	WIRELESS
00JT507	Wireless,CMB,IN,3165 ac Ind	WIRELESS

NO.	FRU	CRU No.
1	Foot cover	1
2	RAM Shield	1
3	Stand base	1
4	Stand holder	1
5	HDD	1
6	HDD EMI Shield	1
7	HDD bracket	1
8	RAM	1
9	Rear cover	2
10	ODD cable ( including HDD cable)	
11	ODD Bazel	1
12	ODD	1
13	Mainboard Frame	
14	Heat Sink	
15	Fan	
16	Power supply	
17	Power connector bracket	
18	Power connector	
19	CPU	

20	Speaker	
21	Motherboard	
	CPU Holder	
	CMOS Battery	
	Maylar	
	Northbridge heat sink	
	Thermal paste	
22	Camera Module=Camera+Camera Holder	
	Camera	
	Camera rubber	
	Camera Holder	
	Microphone rubber*2	
23	Microphone board	
24	Microphone cable	
25	Wi-Fi card	
26	LCD Module=LCD+LVDS Cable+Converter Cable to LCD+Power Switch Cable+Chassis	
	LCD	
	LVDS	
	Power switch Cable	
	Converter Cable to LCD	
	A cover	
	Glass	
	Chassis	
27	Power switch Cable	
28	power switch board	2
29*	SSD*(Optional, Not Existed in Sample)	2
30*	SSD Bazel	2
31*	SSD Housing	2
32*	SSD Cable(including HDD cable, for SSD configuration model)	
33	Keyboard	1
34	Mouse	1
35	Power cord	1
36	RF Antenna FRU=RF cable+Antenna+Adhesive	
	Rf cable	
	Antenna	
	Adhesive	
37	I/O Bracket	

38	Rear Deco	
39	Invertor board	



---

## Chapter 10. General information

This chapter provides general information that applies to all computer models covered by this manual.

---

### Additional Service Information

This chapter provides additional information that the service representative might find helpful.

#### Power management

Power management reduces the power consumption of certain components of the computer such as the system power supply, processor, hard disk drives, and some monitors.

#### Advanced configuration and power interface (ACPI) BIOS

As this computer has an ACPI BIOS system, the operating system is allowed to control the power management features of the computer and the settings for Advanced Power Management (APM) BIOS mode is ignored. Not all operating systems support ACPI BIOS mode.

#### Automatic Power-On features

The Automatic Power-On features within the Power Management menu allow you to enable and disable features that turn on the computer automatically.

- Wake Up on Alarm: You can specify a date and time at which the computer will be turned on automatically. This can be either a single event, a daily event or a weekly event.
- Wake Up on LAN: This feature allows LAN adapter card to wake the System.