

Your new dryer

Congratulations - You have chosen a modern, high-quality Bosch domestic appliance.
The condensation dryer is distinguished by its economical energy consumption.
Every dryer which leaves our factory is carefully checked to ensure that it functions correctly and is in perfect condition.
Should you have any questions, our after-sales service will be pleased to help.

Disposal in an environmentally-responsible manner

This appliance is labelled in accordance with European Directive 2012/19/EU concerning used electrical and electronic appliances (waste electrical and electronic equipment - WEEE). The guideline determines the framework for the return and recycling of used appliances as applicable throughout the EU.

For further information about our products, accessories, spare parts and services, please visit: www.bosch-home.com

Observe the safety instructions on page 11.

Read these instructions and the separate **Energy-saving mode** instructions before operating the dryer.

Contents

| | Page |
|--|------|
| ■ Preparation | 2 |
| ■ Setting the programmes | 2 |
| ■ Drying | 3/4 |
| ■ Information on laundry | 5 |
| ■ Fine adjustment of the drying result | 5/6 |
| ■ Care and cleaning | 6 |
| ■ Programme overview | 7 |
| ■ Installation | 8 |
| ■ Frost protection / Transport | 8 |
| ■ Technical data | 9 |
| ■ Optional accessories | 9 |
| ■ What to do if... / After-sales service | 10 |
| ■ Safety instructions | 11 |

Reduced temperature for delicate fabrics ☐ that require a longer drying time; e.g. for polyacrylics, polyamide, elastane or acetate.

Intended use

- for domestic use only,
- only to be used for drying fabrics that have been washed with water.

Keep children younger than 3 years old away from the dryer.
Do not let children make the cleaning and maintenance work on the dryer without supervision.
Do not leave children unsupervised near the dryer.
Keep pets away from the dryer.
The dryer can be operated by children 8 years old and older, by persons with reduced physical, sensory or mental abilities and by persons with insufficient experience or knowledge if they are supervised or have been instructed in its use by a responsible adult.

Preparing for installation, see Page 8

Never start the dryer if it is damaged!
Inform your after-sales service.

Inspecting the dryer

Connecting the mains plug

Make sure your hands are dry.
Hold the plug only.

Sorting and loading laundry

Remove all items from pockets.
Check for cigarette lighters.
The drum must be empty prior to loading.
See programme overview on page 7.
See also separate instructions for "Woollens basket" (depending on model)

Selecting and adjusting the programme

Select the drying programme ...

... and adapt to individual requirements

| Additional functions | Display panel | Programme selector |
|----------------------|--|---|
| Low Heat | <ul style="list-style-type: none">○ Drying○ Iron Dry○ Cupboard Dry○ Anti-Crease/End | <div>Easy-Care ☐ Extra Dry ☐ Cupboard Dry ☐ Iron Dry ☐ SuperQuick 40' ☐ Sportswear ☐</div> <div>Off ☐ ☐ ☐ ☐ ☐ ☐</div> <div>Cottons ☐ Extra Dry ☐ Cupboard Dry ☐ Iron Dry ☐ Timed Programme ☐ warm 20 min.</div> <div>Start Stop ⓘ</div> |

| Service indicators | Empty the condensate container. Clean the fluff filter and/or air cooler under running water. → Page 4/6. |
|--------------------------------------|---|
| Container Clean | |
| Fine adjustment of the drying result | The drying result (e.g. Cupboard Dry) can be adjusted over three levels (1 - max. 3) for the ☐ Cottons, ☐ Easy-Care and ☐ SuperQuick 40' programmes → presetting = 0. After one of these programmes has been finely adjusted, the setting is retained for the others. Further information → Page 5/6. |

☐ ☐ ☐ Low Heat

All buttons are sensitive and only need to be touched lightly.

Press the ⓘ Start/Stop button

Only operate the dryer with the fluff filter inserted!

Drying



Drying

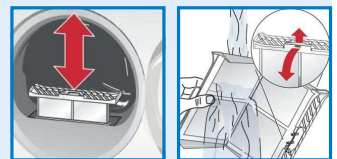
Emptying condensation

Empty container **after** each drying operation!
1. Pull out condensate container keeping it horizontal.
2. Pour out condensation.
3. Always push container in fully until it clicks into place.
If **Container** flashes in the display panel → *What to do if...*, Page 10.



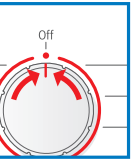
Cleaning the fluff filter

Clean the fluff filter **after** each drying operation.
1. Open the door, remove fluff from door/door area.
2. Pull out and fold open the fluff filter.
3. Remove the fluff (by wiping the filter with your hand).
If the fluff filter is very dirty or blocked, rinse with warm water and dry thoroughly.
4. Close and reinsert the fluff filter.



Switching off the dryer

Turn the programme selector to **Off**.
Do not leave laundry in the dryer.



Removing the laundry

The automatic anti-crease function causes the drum to move at specific intervals, the washing remains loose and fluffy for an hour (two hours if the additional ☐ **Reduced Ironing** function is also selected - depending on model).

Programme end once lights up in the display.

Interrupt programme removing or adding laundry.

The drying cycle can be interrupted for a brief period so that laundry may be added or removed.
The programme selected must then be resumed and completed.

Never switch the dryer off before the drying process has ended.
Drum and door may be hot!

1. Open door, the drying process is interrupted.
2. Load or remove laundry and close door.
3. If required, select a new programme and additional functions.
4. Press the ⓘ Start/Stop button.

Information on laundry ...

Labelling of fabrics

Follow the manufacturer's care information.
☑ Drying at normal temperature.
☑ Drying at low temperature → also select ☐ **Low Heat**.
☑ Do not machine dry.

Observe safety instructions without fail → Page 11!
Do not tumble-dry the following fabrics for example:
- Impermeable fabrics (e.g. rubber-coated fabrics).
- Delicate materials (silk or curtains made from synthetic material) → they may crease
- Laundry contaminated with oil.

Drying tips

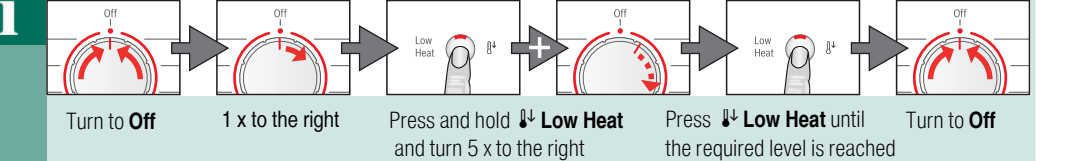
- To ensure a consistent result, sort the laundry by fabric type and drying programme.
- Always dry very small items (e.g. baby socks) together with large items of laundry (e.g. hand towel).
- Close zips, hooks and eyelets, and button up covers.
- Tie fabric belts, apron strings, etc. together
- Do not over-dry easy-care laundry → risk of creasing!
Allow laundry to finish drying in the air.
- Do not dry woollens in the dryer, only use to freshen them up → Page 7, **Woollens finish Programme** (depending on model).
- Do not iron laundry immediately after drying, fold items up and leave for a while → the remaining moisture will then be distributed evenly.
- The drying result depends on the type of water used during washing. → Fine adjustment of the drying result → Page 5/6.
- Machine-knitted fabrics (e.g. T-shirts or jerseys) often shrink the first time they are dried → do not use the **Extra Dry** programme.
- Starched laundry is not always suitable for dryers → starch leaves behind a coating that adversely affects the drying operation.
- Use the correct dosage of fabric softener as per the manufacturer's instructions when washing the laundry to be dried.
- Use the timer programme for small loads → this improves the drying result.

Environmental protection / Energy-saving tips

- Before drying, spin the laundry thoroughly in the washing machine → the higher the spin speed the shorter the drying time will be (consumes less energy), also spin easy-care laundry.
- Put in, but do not exceed, the maximum recommended quantity of laundry → programme overview → Page 7.
- Make sure the room is well ventilated during drying.
- Do not obstruct or seal up the air inlet.
- Keep the air cooler clean → Page 6 "Care and cleaning".

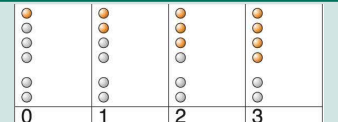
Fine adjustment of the drying result

Adjustment of the levels of dryness



Fine adjustment of the drying result

Drying, Iron Dry, Cupboard Dry, Anti-Crease/End are displayed in sequence.
Short signal when changing from level 3 to 0, otherwise long signal.



Care and cleaning

Only when switched off!

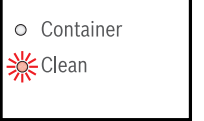
Dryer housing, control panel, air cooler, moisture sensors

- Wipe with a soft, damp cloth.
- Do not use harsh cleaning agents and solvents.
- Remove detergent and cleaning agent residue immediately.

Clean the protective filter 5 - 6 times a year or if **Clean** flashes after cleaning the fluff filter.

Air cooler / Protective filter

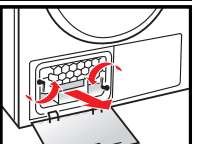
When cleaning, only remove the protective filter. Clean the air cooler behind the protective filter once a year.
- Allow the dryer to cool.
- Residual water may leak out, so place an absorbent towel underneath the maintenance door.



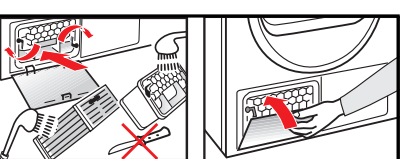
1. Unlock the maintenance door.
2. Open the maintenance door fully.



3. Turn both locking levers towards each another.
4. Pull out the protective filter/air cooler.



Do not damage the protective filter or air cooler.
Clean with warm water only. Do not use any hard or sharp-edged objects.



5. Clean the protective filter/air cooler thoroughly, Allow to drip dry.
6. Clean the seals.
7. Re-insert the protective filter/air cooler, with the handle facing down.
8. Turn back both locking levers.
9. Close the maintenance door until the lock clicks into place.

Moisture sensors

The dryer is fitted with stainless steel moisture sensors. The sensors measure the level of moisture in the laundry. After a long period of operation, a fine layer of limescale may form on the sensors.



1. Open the door and clean the moisture sensors with a damp sponge which has a rough surface.

Do not use steel wool or abrasive materials.

Your new dryer

Congratulations - You have chosen a modern, high-quality Bosch domestic appliance.
The condensation dryer is distinguished by its economical energy consumption.
Every dryer which leaves our factory is carefully checked to ensure that it functions correctly and is in perfect condition.
Should you have any questions, our after-sales service will be pleased to help.

Disposal in an environmentally-responsible manner

This appliance is labelled in accordance with European Directive 2012/19/EU concerning used electrical and electronic appliances (waste electrical and electronic equipment - WEEE). The guideline determines the framework for the return and recycling of used appliances as applicable throughout the EU.

For further information about our products, accessories, spare parts and services, please visit: www.bosch-home.com



Observe the safety instructions on page 11.



Read these instructions and the separate **Energy-saving mode** instructions before operating the dryer.

Contents

| | Page |
|--|------|
| Preparation | 2 |
| Setting the programmes | 2 |
| Drying | 3/4 |
| Information on laundry | 5 |
| Fine adjustment of the drying result | 5/6 |
| Care and cleaning | 6 |
| Programme overview | 7 |
| Installation | 8 |
| Frost protection / Transport | 8 |
| Technical data | 9 |
| Optional accessories | 9 |
| What to do if... / After-sales service | 10 |
| Safety instructions | 11 |

Reduced temperature for delicate fabrics that require a longer drying time; e.g. for polyacrylics, polyamide, elastane or acetate.

Intended use

- for domestic use only,
- only to be used for drying fabrics that have been washed with water.



*Keep children younger than 3 years old away from the dryer.
Do not let children make the cleaning and maintenance work on the dryer without supervision.
Do not leave children unsupervised near the dryer.
Keep pets away from the dryer.
The dryer can be operated by children 8 years old and older, by persons with reduced physical, sensory or mental abilities and by persons with insufficient experience or knowledge if they are supervised or have been instructed in its use by a responsible adult.*

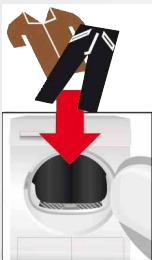
Preparing for installation, see Page 8



Never start the dryer if it is damaged!
Inform your after-sales service.



Make sure your hands are dry.
Hold the plug only.



Sorting and loading

Remove all items from pockets.
Check for cigarette lighters.
The drum must be empty prior to loading.
See programme overview on page 7.
See also separate instructions for "Woollens b..." (depending on model)

Selecting and adjusting the programmes

Select the d...

... and adapt to individ...

| Additional functions | Display panel | Programme selector |
|----------------------|--|--|
| Low Heat | <ul style="list-style-type: none">DryingIron DryCupboard DryAnti-Crease/EndContainerClean | <div>Easy-Care Off Cottons </div> <div>Extra Dry </div> <div>Cupboard Dry </div> <div>Iron Dry </div> <div>SuperQuick 40' </div> <div>Sportswear </div> <div>Timed Programme warm 20 min.</div> <div>Start Stop </div> |
| | Service indicators | |
| | Container Clean | Empty the condensate container. Clean the fluff filter and/or air cooler under running water. → Page 4/6. |
| | Fine adjustment of the drying result | The drying result (e.g. Cupboard Dry) can be adjusted over three levels (1 - max. 3) for the Cottons, Easy-Care and SuperQuick 40' programmes → presetting = 0. After one of these programmes has been finely adjusted, the setting is retained for the others. Further information → Page 5/6. |



All buttons are... need to be tou...

Press the



Only operate the fluff filter i...

Inspecting the dryer



Connecting the mains plug



Loading laundry



“Basket”

the programme

the drying programme ...

individual requirements

sensitive and only
should be touched lightly.

① Start/Stop button

the dryer with
the plug inserted!

Drying



Drying

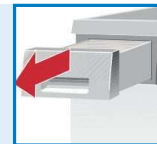


Emptying condensation

Empty container **after** each drying operation!

1. Pull out condensate container keeping it horizontal.
2. Pour out condensation.
3. Always push container in fully until it clicks into place.

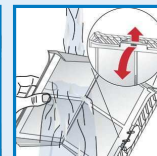
If **Container** flashes in the display panel → *What to do if...*, Page 10.



Cleaning the fluff filter

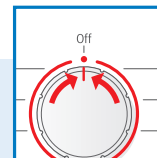
Clean the fluff filter **after** each drying operation.

1. Open the door, remove fluff from door/door area.
2. Pull out and fold open the fluff filter.
3. Remove the fluff (by wiping the filter with your hand).
If the fluff filter is very dirty or blocked, rinse with warm water and dry thoroughly.
4. Close and reinsert the fluff filter.



Switching off the dryer

Turn the programme selector to **Off**.
Do not leave laundry in the dryer.



Removing the laundry

The automatic anti-crease function causes the drum to move at specific intervals, the washing remains loose and fluffy for an hour (two hours if the additional **Reduced Ironing** function is also selected-*depending on model*).

Programme end once lights up in the display.

Interrupt programme removing or adding laundry.



The drying cycle can be interrupted for a brief period so that laundry may be added or removed. The programme selected must then be resumed and completed.



Never switch the dryer off before the drying process has ended.
Drum and door may be hot!

1. Open door, the drying process is interrupted.
2. Load or remove laundry and close door.
3. If required, select a new programme and additional functions.
4. Press the ① **Start/Stop** button.

Anti-Crease/End

Information on laundry ...



Labelling of fabrics

Follow the manufacturer's care information.

- ☑ Drying at normal temperature.
- ☑ Drying at low temperature → also select **Low Heat**.
- ☑ Do not machine dry.



Observe safety instructions without fail → *Page 11!*

Do not tumble-dry the following fabrics for example:

- Impermeable fabrics (e.g. rubber-coated fabrics).
- Delicate materials (silk or curtains made from synthetic material) → they may crease
- Laundry contaminated with oil.



Drying tips

- To ensure a consistent result, sort the laundry by fabric type and drying programme.
- Always dry very small items (e.g. baby socks) together with large items of laundry (e.g. hand towel).
- Close zips, hooks and eyelets, and button up covers.
- Tie fabric belts, apron strings, etc. together
- Do not over-dry easy-care laundry → risk of creasing!
Allow laundry to finish drying in the air.
- Do not dry woollens in the dryer, only use to freshen them up → *Page 7, Woollens finish Programme (depending on model).*
- Do not iron laundry immediately after drying, fold items up and leave for a while → the remaining moisture will then be distributed evenly.
- The drying result depends on the type of water used during washing. → Fine adjustment of the drying result → *Page 5/6.*
- Machine-knitted fabrics (e.g. T-shirts or jerseys) often shrink the first time they are dried → do not use the **Extra Dry** programme.
- Starched laundry is not always suitable for dryers → starch leaves behind a coating that adversely affects the drying operation.
- Use the correct dosage of fabric softener as per the manufacturer's instructions when washing the laundry to be dried.
- Use the timer programme for small loads → this improves the drying result.

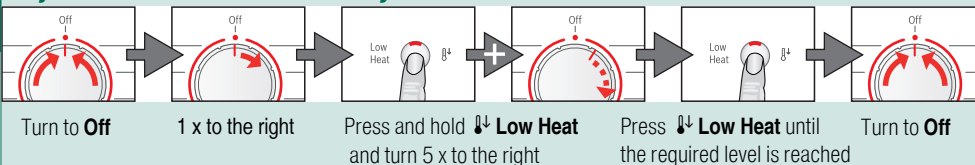
Environmental protection / Energy-saving tips

- Before drying, spin the laundry thoroughly in the washing machine → the higher the spin speed the shorter the drying time will be (consumes less energy), also spin easy-care laundry.
- Put in, but do not exceed, the maximum recommended quantity of laundry → programme overview → *Page 7.*
- Make sure the room is well ventilated during drying.
- Do not obstruct or seal up the air inlet.
- Keep the air cooler clean → *Page 6 "Care and cleaning".*

Fine adjustment of the drying result



Adjustment of the levels of dryness



Fine adjustment of the drying result



Drying, Iron Dry, Cupboard Dry, Anti-Crease/End are displayed in sequence.
Short signal when changing from level 3 to 0, otherwise long signal.

| | | | |
|---|---|---|---|
| ● | ● | ● | ● |
| ● | ● | ● | ● |
| ● | ● | ● | ● |
| ● | ● | ● | ● |
| 0 | 1 | 2 | 3 |

Care and cleaning



Only when switched off!

Dryer housing, control panel, air cooler, moisture sensors

- Wipe with a soft, damp cloth.
- Do not use harsh cleaning agents and solvents.
- Remove detergent and cleaning agent residue immediately.

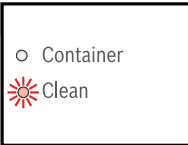
Clean the protective filter 5 - 6 times a year or if **Clean** flashes after cleaning the fluff filter.

Air cooler / Protective filter

When cleaning, only remove the protective filter. Clean the air cooler behind the protective filter once a year.

- Allow the dryer to cool.
- Residual water may leak out, so place an absorbent towel underneath the maintenance door.

1. Unlock the maintenance door.
2. Open the maintenance door fully.

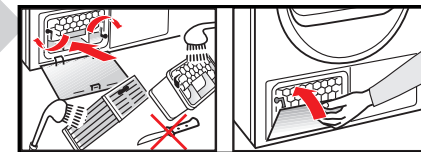


3. Turn both locking levers towards each other.
4. Pull out the protective filter/air cooler.



Do not damage the protective filter or air cooler.
Clean with warm water only. Do not use any hard or sharp-edged objects.

5. Clean the protective filter/air cooler thoroughly, Allow to drip dry.
6. Clean the seals.
7. Re-insert the protective filter/air cooler, with the handle facing down.
8. Turn back both locking levers.
9. Close the maintenance door until the lock clicks into place.



Moisture sensors

The dryer is fitted with stainless steel moisture sensors. The sensors measure the level of moisture in the laundry. After a long period of operation, a fine layer of limescale may form on the sensors.

1. Open the door and clean the moisture sensors with a damp sponge which has a rough surface.



Do not use steel wool or abrasive materials.



Sort the laundry according to type of textile and fabric. Fabrics must be suitable for tumble drying.

| After drying... | iron laundry | lightly iron laundry | do not iron laundry | mangle laundry |
|-------------------------------------|--------------|---|---------------------|----------------|
| TEXTILE TYPE AND INFORMATION | | | | |
| Cottons | max. 7 kg | Hard-wearing fabrics, boil-resistant fabrics made of cotton or linen. | | |
| Easy-Care | max. 3.5 kg | Non-iron laundry made of synthetic fibres and blended fabric, easy-care cotton. | | |
| Iron Dry | | Fabrics suitable for ironing (iron fabrics in order to avoid creasing). | | |
| Cupboard Dry | | Single-layer fabrics. | | |
| *Extra Dry | | Fabrics made of thick, multilayered items of clothing. | | |
| Sportswear | max. 1.5 kg | Fabrics with membrane coating, water-repellent fabrics, functional clothing, fleece fabrics (dry jackets/trousers with removable internal lining separately). | | |
| SuperQuick 40' | max. 2 kg | Laundry made of synthetic fibres, cotton or blended fabrics (for example) that needs to be dried quickly. The values may differ from the those specified depending on the type of fabric, mixture of laundry to be dried, residual moisture in the fabric and loading capacity. | | |
| Timed Programme warm 20 min. | max. 3 kg | Pre-dried, multi-layered, sensitive fabrics made of acrylic fibres, or separate small items of laundry. Also for subsequent drying. | | |

*for **Cottons** and **Easy-Care** programmes only

**Dryness levels can be selected individually → Extra Dry, Cupboard Dry and Iron Dry (depending on the model).

Degree of dryness can be finely adjusted; multi-layered textiles require a longer drying time than single-layered items of clothing. Recommendation: Dry separately.

9409 / 9000964506

Robert Bosch Hausgeräte GmbH
 Carl-Wery-Str. 34
 81739 München/Deutschland
 WTE84106GB

Installation

- Delivery specification: dryer, instructions for installation and use, woollens basket (depending on model).
- Check dryer for transport damage.
- The dryer is very heavy. Do not attempt to lift it on your own.
- Be careful to avoid sharp edges.
- Do not lift the dryer by any of the protruding parts (e.g. the door) as they may break off.
- Do not set up in a room that is susceptible to frost. Freezing water may cause damage.
- If in doubt, have the appliance connected by an expert.

1. Setting up the dryer

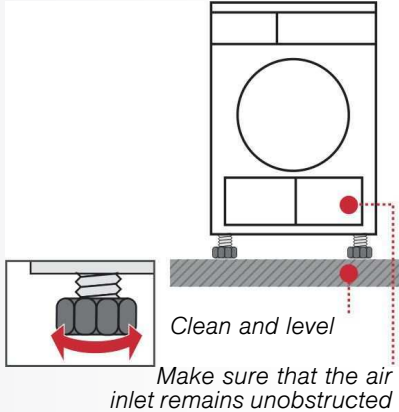
- The appliance plug must always be accessible.
- Ensure that the appliance is installed on a clean, level and solid surface.
- Keep the cooling grille at the front of the dryer unobstructed.
- Keep the area around the dryer clean.
- Make the dryer level using the threaded feet and a spirit level. Do not remove the threaded feet under any circumstances.



Do not set up the dryer behind a door or sliding door as this may obstruct or prevent the dryer door from opening. This will prevent a potentially fatal danger to children from locking themselves in.



Take all accessory parts out of the drum. The drum must be empty.



2. Mains connection see safety instructions → Page 11.

- Connect to an AC earthed socket. If in doubt have the socket checked by an expert.
- The mains voltage and the voltage shown on the rating plate (→ Page 9) must correspond.
- The connected load and necessary fuse protection are specified on the rating plate.

Frost protection / Transport



Do not operate the dryer if there is a danger of frost.





Preparation

1. Empty the condensate container → page 4.
2. Select any programme using the programme selector.
3. Press the **Start/Stop** button → condensation is pumped into the container.
4. Wait 5 min., and then empty the condensate container again.
5. Turn the programme selector to **Off**.

Technical data

| | | |
|---|---|-------------------------------------|
| ● | Dimensions (DxWxH) | 60 x 60 x 85 cm (height adjustable) |
| | Weight | approximately 45 kg |
| | Max. capacity | 7 kg |
| | Condensate container | 4.2 l |
| | Connection voltage | |
| | Connected load | |
| | Fuse protection | see appliance rating plate |
| | Ambient temperature | |
| | Product number/ Production number | |
| | You can find the rating plate on the back of the dryer. | |
| | Power consumption when switched off | 0.10 W |
| | Power consumption when ready for use (left-on mode) | 1.00 W |
| ● | Drum interior light (<i>depending on model</i>) (bulb E14, 25 W): The drum lights up after the door is opened or closed, and after the programme starts, and switches off automatically. Changing the bulb → <i>page 10</i> . | |

Consumption values table

| Programme | Spin speed which is used for spinning the laundry | Duration** | | Energy consumption** | |
|---|---|------------|--------|----------------------|----------|
|  Cottons | | 7 kg | 3.5 kg | 7 kg | 3.5 kg |
| Cupboard Dry* | 1400 rpm | 106 min | 65 min | 3.60 kWh | 1.97 kWh |
| | 1000 rpm | 124 min | 76 min | 4.20 kWh | 2.30 kWh |
| | 800 rpm | 143 min | 88 min | 4.80 kWh | 2.63 kWh |
| Iron Dry* | 1400 rpm | 82 min | 50 min | 2.59 kWh | 1.42 kWh |
| | 1000 rpm | 98 min | 60 min | 3.28 kWh | 1.80 kWh |
| | 800 rpm | 112 min | 69 min | 3.96 kWh | 2.17 kWh |
|  Easy-Care | | 3.5 kg | | 3.5 kg | |
| Cupboard Dry* | 800 rpm | 42 min | | 1.35 kWh | |
| | 600 rpm | 51 min | | 1.65 kWh | |

* Programme setting for testing in accordance with the applicable EN61121 standard.
** The values may differ from those specified, depending on the type of fabric, composition of laundry to be dried, residual moisture in the fabric and the amount of laundry being loaded.

Most efficient programme for cotton fabrics

The following "standard cottons programme" (identified with ☐) is suitable for drying normal, wet cotton laundry and is most efficient in terms of its combined energy consumption for drying wet cotton laundry.

Standard programme for cottons in accordance with current EU regulation 932/2012

| Programme | Load | Energy consumption | Programme duration |
|---|-------------|--------------------|--------------------|
| ☐ Cottons Cupboard Dry | 7 kg/3.5 kg | 4.20 kWh/2.30 kWh | 124 min/76min |
| Programme setting for testing and energy labelling in accordance with Directive 2010/30/EU. | | | |

Optional accessories (from after-sales service using order number, depending on model)

| | |
|-----------|--|
| WMZ 20500 | Platform For easier loading and unloading. The basket contained in the drawer can be used to carry the laundry. |
| WTZ 11310 | Washer-dryer stack connection set The dryer can be placed on top of a suitable washing machine with the same width and depth to save space. The dryer must be fastened to the washing machine using this connection set. With pull-out worktop: WTZ 11300 |
| WTZ 1110 | Connection fittings for condensation outlet The condensation is conveyed directly via a hose. |
| WTZ 10290 | Installation underneath the worktop Instead of the appliance covering plate, you must have a metal cover fitted by a specialist. |

What to do if ...



If you cannot rectify a fault yourself (e.g. switching off/on), please contact our after-sales service. We will always find an appropriate solution and will avoid unnecessary visits by engineers. Trust the expertise of the manufacturer and rest assured that the repair will be carried out by trained service technicians using original spare parts. The contact details of your local after-sales service can be found in the enclosed **after-sales service** directory, or by calling one of these numbers:

- **GB** 0344 892 8979 (Calls charged at local or mobile rate.)
- **IE** 01450 2655 (0.03 € per minute at peak. Off peak 0.0088 € per minute.)


When contacting the after-sales service, please quote the appliance's product number (E no.) and production number (FD) (see the inside of the door).

Set the programme selector to **Off** and remove the appliance plug from the socket.

| | | |
|---|---|--|
| ● | The ① Start /Stop indicator lamp does not light up. | Mains plug plugged in? Programme selected? Check the socket fuse. |
| ● | The display panel light and indicator lights (<i>depending on model</i>) go out and the ① Start /Stop indicator light flashes. | Energy-saving mode is activated → see the separate <i>Energy-saving mode</i> instructions. |
| ● | The Container and ① Start /Stop indicator lights are flashing. | Empty the condensate container. If featured, check hose for condensation outlet. |
| ● | The Clean and ① Start /Stop indicator lights are flashing. | Clean the fluff filter and/or air cooler under running water → <i>Page 4/6</i> . |
| ● | Dryer does not start. | ① Start /Stop button selected? Door closed? Programme set? Ambient temperature greater than 5°C? |
| ● | Water is running out. | Align dryer horizontally. Clean air cooler seal. |
| ● | The door opens by itself. | Push the door closed until you hear it engage. |
| ● | Creasing. | Laundry load exceeded? Remove articles of clothing immediately after the end of the programme, hang up and pull into shape. Unsuitable programme selected → <i>Page 7</i> . |
| ● | Laundry is not dried correctly or is still too damp. | After the end of the programme, warm laundry feels damper than it actually is. Spread the laundry out and allow the heat to disperse. Finely adjust the dryness level – this extends the drying time but does not increase the temperature. Your laundry will become drier. Select a programme with a longer drying time or increase the drying level. This does not increase the temperature. Select a time programme for extended drying of laundry that is still damp. If you have exceeded the maximum load for the programme, the laundry may not be dried correctly. Clean the moisture sensor in the drum. A fine layer of limescale may adversely affect the performance of the sensors and your washing will not dry properly. Drying has been interrupted as a result of a power cut, because the condensate container is full or because the maximum drying time has been exceeded. |
| ● | Drying time too long. | Rinse the fluff filters under running water → <i>Page 4</i> . Insufficient supply of air → ensure that air can circulate. Air inlet possibly blocked → Clear inlet → <i>Page 8</i> . Ambient temperature higher than 35 °C → ventilate the room. |
| ● | The humidity in the room increases significantly. | Make sure the room is sufficiently ventilated. |
| ● | Power failure. | Remove laundry from the dryer immediately and spread out. This allows the heat to dissipate. Be careful as the door, the drum and the laundry may be hot. |
| ● | One or more indicator lights for programme status are flashing. | Clean filter and air cooler → <i>Page 4/6</i> . Check installation conditions → <i>Page 8</i> . Switch off, leave to cool down, switch on again, restart programme. |
| ● | The interior light is not working (<i>depending on model</i>). | Pull out the appliance plug, remove the cover cap in the interior above the door (use Torx 20 screw driver) and replace the bulb. Close the cover cap. Never operate the dryer without a cover cap. |

Safety instructions



- Emergency** – Pull the appliance plug out of the socket immediately or disconnect the fuse.
- ONLY use the dryer...** – in rooms inside the house.
– to dry fabrics.
- The dryer must NEVER...** – be used for other purposes than those described above.
– be modified in terms of its technology or attributes.
- Dangers** – The dryer must not be used by children or persons who have not been instructed in its use.
– Do not leave children unsupervised near the dryer.
– Keep pets away from the dryer.
– Remove all objects from pockets. Make especially sure that cigarette lighters are removed as they constitute an → **explosion hazard**.
– Do not lean or sit on the door → **risk of tipping**.
- Installation** – Secure loose cables → **tripping hazard**.
– Do not operate the dryer if there is a risk of frost.
- Mains connection** – Connect the dryer according to specifications to an AC earthed socket, as otherwise it cannot be guaranteed that the appliance is completely safe.
– The cable cross-section must be sufficient.
– Only use earth-leakage circuit breakers with the following symbol: 
– The appliance plug and socket must be compatible.
– Do not use multiple plugs/couplings and/or extension cables.
– Do not hold the appliance plug with wet hands → **risk of electric shock**.
– Never pull the appliance plug out of the socket by its cable.
– Do not damage the mains lead → **risk of electric shock**.
- Operation** – Only load the drum with laundry. Check the contents before you switch the dryer on.
– Do not use the dryer if the laundry has been in contact with solvents, oil, wax, grease or paint (e.g. hair setting spray, nail polish remover, stain remover, cleaning solvent, etc.) → **fire/explosion hazard**.
– The tumble dryer is not to be used if industrial chemicals have been used for cleaning.
– Dust (e.g. coal dust, flour) poses a danger: do not use the dryer → **explosion hazard**.
– Do not turn off the dryer until the drying process ends, unless the laundry will be removed quickly and spread out, so that the heat can dissipate.
– Do not put laundry containing foamed material/rubber in the dryer → elastic material may be destroyed and the dryer may be damaged due to possible deformation of the foamed material.
– Light things, such as long hair, may be sucked into the air inlet of the dryer → **Risk of injury**.
– Final part of a tumble dryer cycle occurs without heat (cool down cycle), to ensure that the items are left at a temperature that ensures that the items will not be damaged.
– Switch off the dryer once the programme has ended.
– Condensation is not drinking water and may be contaminated with fluff.
- Defect** – Do not use the dryer if it is defective or if you suspect it is. Repairs must only be carried out by the after-sales service.
– Do not use the dryer if the mains cable is defective. To avoid danger, only have the defective mains cable replaced by the after-sales service.
– Always pull the mains plug out of the socket before changing the bulb for the interior light → **risk of electric shock**.
- Spare parts** – Only use genuine spare parts and accessories for safety reasons.
- Disposal** – Dryer: pull out the appliance plug, **then** cut off the mains cable from the appliance. Dispose of at municipal waste disposal facility.
– Packaging: do not leave children alone with packing parts → **risk of suffocation**.
– All materials are environmentally sound and can be reused. Dispose of in an environmentally-responsible manner.



Register your new Bosch now:
www.bosch-home.com/welcome



Dryer
WTE84106GB



BOSCH

en Instruction manual