

USB 3.0 to 2.5" SATA III Enclosure w/Encryption

S2510BU33PW



*actual product may vary from photos

DE: Bedienungsanleitung - de.startech.com

FR: Guide de l'utilisateur - fr.startech.com

ES: Guía del usuario - es.startech.com

IT: Guida per l'uso - it.startech.com

NL: Gebruiksaanwijzing - nl.startech.com

PT: Guia do usuário - pt.startech.com

For the most up-to-date information, please visit: www.startech.com

FCC Compliance Statement

This equipment has been tested and found to comply with the limits for a Class B digital device, pursuant to part 15 of the FCC Rules. These limits are designed to provide reasonable protection against harmful interference in a residential installation. This equipment generates, uses and can radiate radio frequency energy and, if not installed and used in accordance with the instructions, may cause harmful interference to radio communications. However, there is no guarantee that interference will not occur in a particular installation. If this equipment does cause harmful interference to radio or television reception, which can be determined by turning the equipment off and on, the user is encouraged to try to correct the interference by one or more of the following measures:

- Reorient or relocate the receiving antenna.
- Increase the separation between the equipment and receiver.
- Connect the equipment into an outlet on a circuit different from that to which the receiver is connected.
- Consult the dealer or an experienced radio/TV technician for help

This device complies with part 15 of the FCC Rules. Operation is subject to the following two conditions: (1) This device may not cause harmful interference, and (2) this device must accept any interference received, including interference that may cause undesired operation.

Changes or modifications not expressly approved by StarTech.com could void the user's authority to operate the equipment.

Industry Canada Statement

This Class B digital apparatus complies with Canadian ICES-003.

Cet appareil numérique de la classe [B] est conforme à la norme NMB-003 du Canada.

CAN ICES-3 (B)/NMB-3(B)

Use of Trademarks, Registered Trademarks, and other Protected Names and Symbols

This manual may make reference to trademarks, registered trademarks, and other protected names and/or symbols of third-party companies not related in any way to StarTech.com. Where they occur these references are for illustrative purposes only and do not represent an endorsement of a product or service by StarTech.com, or an endorsement of the product(s) to which this manual applies by the third-party company in question. Regardless of any direct acknowledgement elsewhere in the body of this document, StarTech.com hereby acknowledges that all trademarks, registered trademarks, service marks, and other protected names and/or symbols contained in this manual and related documents are the property of their respective holders.

Table of Contents

Introduction	1
Packaging Contents	1
System Requirements.....	1
Product Diagram	2
Top View	2
Front View	2
Hardware Installation	3
How to Use	5
Initial Setup	5
Menu Options.....	7
Technical Support	10
Warranty Information	10

Introduction

Packaging Contents

- 1 x USB 3.0 to 2.5" SATA III Enclosure w/ Encryption
- 1 x USB 3.0 Cable
- 1 x Drive case
- 1 x Drive installation screws
- 1 x Mini screw driver
- 1 x Instruction manual

Note: It is recommended that the contents of this enclosure be regularly backed-up, as lost passwords or hardware failure (SATA drive or enclosure) will result in the stored data being unrecoverable.

System Requirements

- Computer system with available USB port
- 2.5in SATA Hard drive (HDD) or Solid State Drive (SSD)

Warning: To use AES encryption, the SATA drive must be initialized and formatted after setup. This will erase all data on the drive.

Product Diagram

Top View

1. OLED Readout Display
2. Touchscreen Keypad



Front View

1. USB 3.0 Micro B port



Hardware Installation

WARNING! Hard drives and storage enclosures require careful handling, especially when being transported. If you are not careful with your hard disk, lost data may result. Always handle your hard drive and storage device with caution. Be sure that you are properly grounded by wearing an anti-static strap when handling computer components or discharge yourself of any static electricity build-up by touching a large grounded metal surface (such as the computer case) for several seconds.

1. The back panel of the enclosure is held securely in place with two small screws. Use the provided mini screwdriver to remove the screws.



NOTE: For brand new out of the box installations, this step is not required as the screws are not installed.

2. Using the small groove located along the top edge of the enclosure, remove the back panel to expose the interior drive bay.



3. Place the 2.5" SATA drive into the bay (label side down) and slide the drive onto the SATA connector. Make sure the drive is fully seated.



CAUTION: To use AES encryption, the drive must be initialized and formatted after setup. Do not place a drive containing data you wish to encrypt into the enclosure. The data must be copied over after the enclosure has been setup.

4. Place the back panel back onto the enclosure and fasten using the small screws.



5. With the enclosure fully assembled, connect the USB 3.0 cable from the enclosure to a USB port on the host computer system.



How to Use

Initial Setup

1. When connected to a host computer for the first time, the OLED readout will prompt you to setup a password or not. If no password is used, the enclosure will function as a standard external hard drive enclosure without any encryption.

The new HDD is connected. Will you use Passwords? Yes/No

2. If you have chosen to use a password you will receive a prompt informing you it will be impossible to recover data without your password. Select "Yes" to continue.

It is impossible to recovery any data in the HDD after initialization. Do you want to continue? Yes/No

3. After you have selected the option to continue to use a password, you will be prompted to enter a 4 ~ 8 digit password. Press <Enter> when complete.

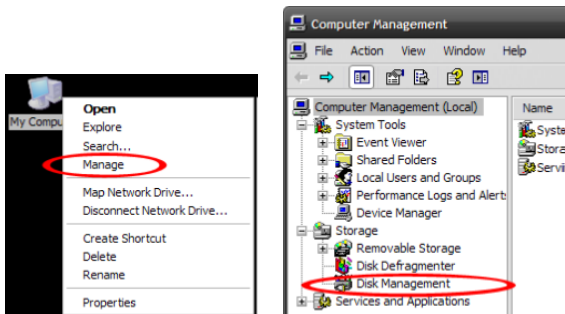
Enter a password first time

WARNING: If the password is lost, the data on the drive will not be recoverable.

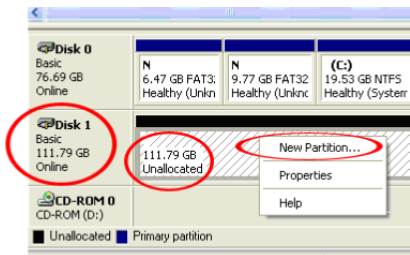
4. Re-enter the password as confirmation and press <Enter>.

Re-enter your password

- Once the password has been setup, the SATA drive must be initialized and formatted before use. From the main Windows desktop, right-click on “My Computer” (“Computer” in Vista/ 7 / 8), then select Manage. In the new Computer Management window, select Disk Management from the left window panel.



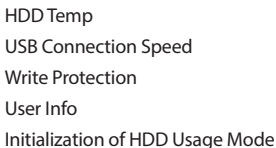
- A dialog window should automatically appear, asking your to initialize the drive. Depending on the version of Windows, it will give you the option of either creating an “MBR” or “GPT” disk. GPT (GUID partition) is not compatible with some older operating systems, while MBR is supported by newer and older operating systems.
- Once initialized, locate the Disk that says it is “Unallocated” (check the listed hard drive capacity to confirm it’s the correct hard drive) and then right-click in the section that says “Unallocated” and select “New Partition”.



Note: Losing the password or hardware failure (the SATA drive or enclosure) will result in the data stored in the enclosure becoming unrecoverable. Removing the drive from the enclosure or placing it into another S2510BU3PW enclosure will not allow access to the data. It is recommended that all data stored on the enclosure also be backed up to another location regularly to prevent any chance of losing your data.

Menu Options

Pressing the <Menu> button on the keypad will allow access to additional options for the enclosure. Press the <UP> and <DOWN> arrow keys (<2>, <8>) to scroll through the available options.



HDD Temp
USB Connection Speed
Write Protection
User Info
Initialization of HDD Usage Mode

HDD Temp

Displays the current temperature of the installed SATA drive.



HDD Temperature
Temp: 33°C

Note: Only compatible with select hard drives

USB Connection Speed

Displays the current USB connection mode (i.e. USB 3.0/ USB 2.0/ USB 1.0).



USB Connection Speed
USB 3.0

Write Protection

Enable write protection on the installed SATA drive, which prevents data from being written to or deleted from the SATA drive. Data can only be read.

User Info

Configuration options for setting and displaying optional user info, such as a name (8 character limit) and phone number (20 character limit). A name can be configured to display on the OLED display on startup, instead of the standard logo and the phone number can be set to display when an incorrect password is entered. This can be used as contact info for returning misplaced units. Check the "User Info Display" option to enable this feature.

- \1. Name ()
- \2. Phone Number ()
- 3. User Info display

When entering characters for the “Name”, refer to the following chart. Enter the code for the desired character and then press <Enter>. When finished entering all characters, press the <Menu> button to save and exit

0	sp	14	.	28	<	42	J	56	X	70	f	84	t
1	!	15	/	29	=	43	K	57	Y	71	g	85	u
2	“	16	0	30	>	44	L	58	Z	72	h	86	v
3	#	17	1	31	?	45	M	59	[73	i	87	w
4	\$	18	2	32	@	46	N	60	\	74	j	88	x
5	%	19	3	33	A	47	O	61]	75	k	89	y
6	&	20	4	34	B	48	P	62	^	76	l	90	z
7	'	21	5	35	C	49	Q	63	_	77	m	91	{
8	(22	6	36	D	50	R	64	`	78	n	92	
9)	23	7	37	E	51	S	65	a	79	o	93	}
10	*	24	8	38	F	52	T	66	b	80	p	94	~
11	+	25	9	39	G	53	U	67	c	81	q	95	[]
12	,	26	:	40	H	54	V	68	d	82	r		
13	-	27	;	41	I	55	W	69	e	83	s		

NOTE: There is no backspace, so if a wrong character is entered, you must exist and re-enter the menu to start over.

Initialization of HDD Usage Mode

WARNING: This will result in all data on the drive being lost.

The installed SATA drive can be re-initialized while connected to the host computer, which will result in the drive partition being deleted and drive being treated as a new drive. The SATA drive will need to be re-partitioned and formatted on the host computer afterwards.

Do you want to initialize HDD?
0=NO, 1=YES

HDD Lock

Instead of disconnection the hard drive during extended period no use or while leaving the drive unattended the drive can be Locked and disconnected from the host by pressing and holding the <Menu> button for about 5 seconds. To Unlock the drive, press and hold the <Menu> button again for about 5 seconds. The user will be prompted for the password before the drive will become accessible again.

WARNING: Make sure no data is being written or read from the drive when using this function. Doing so may result in damage and/or loss of data.

Technical Support

StarTech.com's lifetime technical support is an integral part of our commitment to provide industry-leading solutions. If you ever need help with your product, visit www.startech.com/support and access our comprehensive selection of online tools, documentation, and downloads.

For the latest drivers/software, please visit www.startech.com/downloads

Warranty Information

This product is backed by a two year warranty.

In addition, StarTech.com warrants its products against defects in materials and workmanship for the periods noted, following the initial date of purchase. During this period, the products may be returned for repair, or replacement with equivalent products at our discretion. The warranty covers parts and labor costs only. StarTech.com does not warrant its products from defects or damages arising from misuse, abuse, alteration, or normal wear and tear.

Limitation of Liability

In no event shall the liability of StarTech.com Ltd. and StarTech.com USA LLP (or their officers, directors, employees or agents) for any damages (whether direct or indirect, special, punitive, incidental, consequential, or otherwise), loss of profits, loss of business, or any pecuniary loss, arising out of or related to the use of the product exceed the actual price paid for the product. Some states do not allow the exclusion or limitation of incidental or consequential damages. If such laws apply, the limitations or exclusions contained in this statement may not apply to you.

Hard-to-find made easy. At StarTech.com, that isn't a slogan. It's a promise.

StarTech.com is your one-stop source for every connectivity part you need. From the latest technology to legacy products — and all the parts that bridge the old and new — we can help you find the parts that connect your solutions.

We make it easy to locate the parts, and we quickly deliver them wherever they need to go. Just talk to one of our tech advisors or visit our website. You'll be connected to the products you need in no time.

Visit www.startech.com for complete information on all StarTech.com products and to access exclusive resources and time-saving tools.

StarTech.com is an ISO 9001 Registered manufacturer of connectivity and technology parts. StarTech.com was founded in 1985 and has operations in the United States, Canada, the United Kingdom and Taiwan servicing a worldwide market.