



P380



User
Manual

P380 User Manual

Congratulations on your purchase of the Antec P380!

With its simplicity and elegance, the P380 is a successful blend of the stylish design, sophisticated cooling and proven Quiet Computing™ features of Antec's award-winning Performance One enclosure series. Like all models in the series, the P380 is equipped with double-layered noise-dampening side panels, creating a system that is almost inaudible even when the fans are spinning at a high speed. With roomy interior, the P380 is compatible with CEB and standard ATX motherboards and includes nine expansion slots to support up to 18.3" long graphics cards. The P380 also offers advanced computing features like dual power / reset button design, grommet-lined cable routing paths, elegant aluminum front panel features two well-placed USB 3.0 and USB 2.0 ports, and audio in/out jacks. The case boasts one slim optical drive bay, three anti-vibration 3.5"/2.5" removable drive cages (eight 3.5"/2.5" HDD bays).

The P380 does not include a power supply. Make sure you choose a power supply that is compatible with your computer components and has a long enough power harness to reach your motherboard and peripheral devices. We recommend our High Current Gamer, High Current Pro or EDGE power supplies for the latest ATX specification compliance, broad compatibility, and power savings capability.

At Antec, we continually refine and improve our products to ensure the highest quality. As such, your new chassis may differ slightly from the description in this manual due to improvements applied for the optimal building experience. As of November 15, 2011, all features, descriptions, and illustrations in this manual are correct.

Disclaimer

This manual is intended only as a guide for Antec's computer enclosures. For more comprehensive instructions on installing the motherboard and peripherals, please refer to the manuals that come with those components.

Table of Contents

Section 1: Introduction

1.1	Getting to Know Your Chassis.....	5
1.2	Chassis Specifications.....	6
1.3	Included Screws	6
1.4	Before You Begin	7

Section 2: Hardware Installation

2.1	Setting Up.....	9
2.2	Motherboard Installation.....	10
2.3	Installing KUEHLER H ₂ O Liquid Coolers	11
2.4	Power Supply Installation.....	12
2.5	Internal 3.5" / 2.5" Device Installation	13
2.6	Slim Optical Drive Tray Installation.....	17
2.7	Cable Management.....	18

Section 3: Front I/O Ports

3.1	USB 2.0	20
3.2	USB 3.0	20
3.3	AC'97 / HD Audio Ports	21
3.4	Power Switch / Reset Switch / Hard Disk Drive LED Connectors.....	22
3.5	Rewiring Motherboard Header Connections	22

Section 4: Cooling System

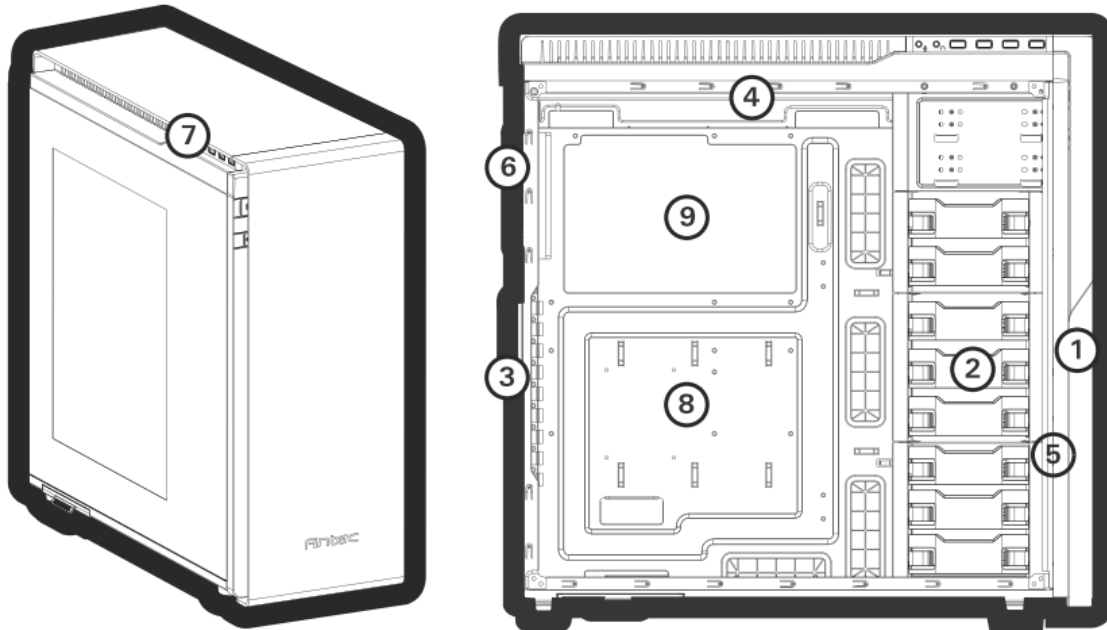
4.1	Included Fans.....	25
4.2	Optional Fans.....	26
4.3	Air Filters	27

Section 1

Introduction

1.1

Getting to Know Your Chassis



1. 1 x slim optical drive bay
2. 8 x 3.5"/2.5" tool-less HDD bays
3. 9 x Expansion Slots
4. 3 x 120mm/2 x 140mm top exhaust fan mount (2 x 140mm FDB fan pre-installed)
5. 3 x 120mm/2 x 140mm front intake fan mount
6. 1 x 120 mm rear exhaust fan mount (1 x 120mm FDB fan pre-installed)
7. I/O Ports: 2 x USB3.0; 2 x USB2.0; Audio In/Out
8. Motherboards: SSI CEB, E-ATX, ATX, Micro ATX, Mini-ITX
9. CPU cutout

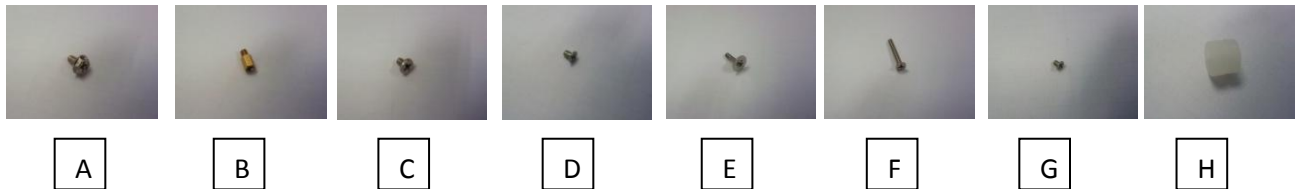
1.2 Chassis Specifications

Chassis Type	Full Tower
Chassis Color	Black
Dimensions	21.85" (H) x 8.80" (W) x 21.92" (D) 555 mm (H) x 223.6 mm (W) x 557 mm (D)
Weight	27 lbs / 12.25 kg
Cooling	- 3 x 120mm/2 x 140mm top exhaust fan mount(2 x 140mm FDB fan pre-installed) - 3 x 120mm/2 x 140mm front intake fan mount - 1 x 120 mm rear exhaust fan mount(1 x 120mm FDB fan pre-installed)
Drive Bays	- 1 x Slim optical drive bay - 8 x 3.5"/2.5" tool-less HDD bays
Expansion Slots	9: supports up to 3-way NVIDIA® SLI® / AMD CrossFireX™
Motherboard Size	SSI CEB, E-ATX, ATX, Micro ATX, Mini-ITX
Front I/O Panel	- 2 x USB 3.0 with internal motherboard connector - 2 x USB 2.0 - Audio In/Out

1.3 Included Screws

An inventory of all screws and intended usage and quantity is provided here:

- A. Power supply screw (4)
- B. Motherboard standoff (4)
- C. Motherboard screw (10)
- D. 2.5" tray-mount and DVD screw (24)
- E. 3.5" tray-mount screw (32)
- F. Front fan screw (12)
- G. Slim ODD screw (4)
- H. Anti-vibration rubber(6)



In order to ensure that your building experience with the P380 will be a positive one, please take note of the following:

- While working inside your P380, keep your chassis on a flat, stable surface. Make sure your build environment is clean, well-lit, and free of dust.
- Antec chassis feature rounded edges that minimize the occurrence of hand injuries. Nonetheless, exercise caution and control when handling chassis interiors. We strongly recommend taking the appropriate time and care when working inside the chassis. Avoid hurried or careless motions.
- Handle components and cards with care. Do not touch the unshielded components or contacts on a card. Hold a card by its edges. Hold a component such as a processor by its edges, never by its pins.
- To avoid electrostatic discharge, ground yourself periodically by touching an unpainted metal surface (such as a connector or screw on the back of this computer) or by using a wrist grounding strap.
- Before you connect a cable, ensure that both connectors are correctly aligned and oriented. Bent pins can be difficult to fix and may require replacement of the entire connector.
- This manual is not designed to cover CPU, RAM, or expansion card installation. Please consult your motherboard manual for specific mounting instructions and troubleshooting. Before proceeding, check the manual for your CPU cooler to find out if there are steps you must take before installing the motherboard.
- Do not sit on your chassis. Although it is constructed of heavy-duty steel and internally reinforced, it is not designed to support the weight of an adult, and may buckle.
- Remember to use the right tools for each task. Do not use improvised screwdrivers like coins, nails or knife blades as they may result in damage to screw threads or even injury. Do not use your fingernails to separate edges or lift the sides of the chassis, as paint chipping or injury may occur.

Section 2

Hardware Installation

2.1

Setting Up

Put the case upright on a flat, stable surface so that the side panel is facing you. To remove the left and right side panels, remove these thumbscrews first.

Note: Place the panel thumbscrews aside carefully and remember where they are.

Remove the panel by gripping the end of the panel at the top & bottom and swinging the panel outward. Do not pull the panel back toward the rear of the chassis.



Remove the panel by the end of the panel at the top & bottom and swing the panel outward.

CAUTION

Do not use your fingernails to pry or lift the panels. Damage to the panels or injury to your fingernails may result.

Note: Please be careful when removing the plastic film from the side window so as to avoid the window falling-down.

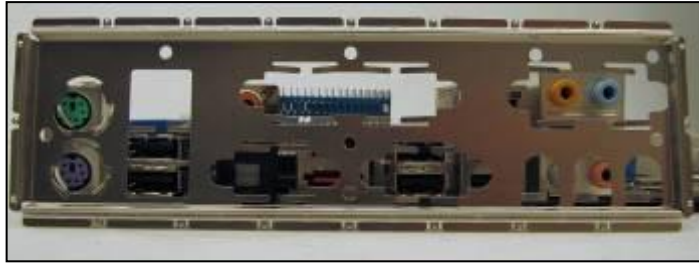


2.2 Motherboard Installation

Before proceeding:

Check the manual for your CPU cooler to find out if there are steps you must do before installing the motherboard.

Make sure you have the correct I/O panel for your motherboard. If the panel provided with the chassis isn't suitable, please contact your motherboard manufacturer for the correct I/O panel.



Make sure you have the correct I/O panel.

The P380 comes with six preinstalled motherboard standoffs. These are positioned for Standard ATX motherboards but can be relocated to accommodate other form factors.

- A. Align the motherboard with the standoff holes on the motherboard tray and remember or mark which holes are lined up
- B. Install standoffs as needed and put the motherboard in.



Install the motherboard standoffs by aligning the motherboard with the standoff holes.

CAUTION

Make sure to remove any unused motherboard standoffs. They may come into contact with the back of the motherboard and may electrify your chassis exterior if left connected.

- C. Screw your motherboard into the standoffs with the provided motherboard mounting screws.



Use the provided motherboard mounting screws to secure your motherboard into the standoffs.

2.3 Installing KUHLER H₂O Liquid Coolers

The following instructs how to install the Antec KUHLER H₂O liquid CPU cooler (1250 / 950). For any other CPU coolers, please consult your manufacturer's installation guide.

Caution:

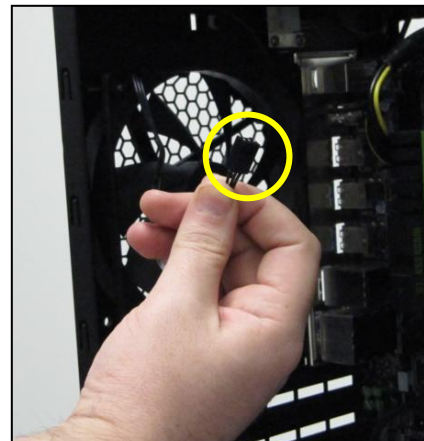
Check your motherboard's CPU socket to ensure its compatibility with the KUHLER H₂O. The KUHLER H₂O 1250 / 950 is compatible with the following CPU sockets:

Intel® LGA 1155 / 1156 / 1366 / 2011*
AMD® AM2 / AM3 / AM2+ / AM3+ / FM1

*Your unit may not contain the LGA 2011 mounting bracket. To acquire this, please contact Antec customer support (information listed at end of manual).

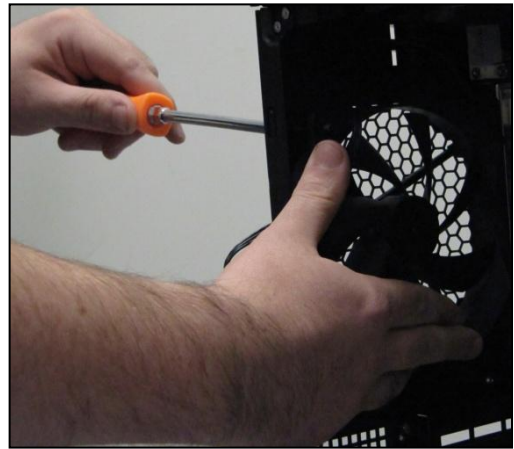
**Be sure to install the KUHLER H₂O with the end of the tubes positioned at the bottom of the radiator.

- A. Remove the rear fan by first disconnecting the power connector from the fan power hub directly above the fan.



Disconnect the 3-pin power connector.

- B. Remove the screws on the back of the chassis while supporting the fan with your other hand.



Unscrew the rear fan to remove it.

- C. Preparing the KUHLER H₂O backplate is specific to your CPU socket. Please refer to the KUHLER H₂O installation guide, available at http://www.antec.com/Believe_it/product.php?id=Mjc2OCYxNw== (KUHLER H₂O 620) or http://www.antec.com/Believe_it/product.php?id=NzA0MzZwJjE3 (KUHLER H₂O 920) for more information.
- D. Prepare the retention ring according to the CPU socket you're using.
- E. Complete installation according to the KUHLER H₂O instructions.

2.4 Power Supply Installation

- A. With the case upright, place the power supply as illustrated in the image to the right.
- B. Push the power supply to the back of the case and align the mounting holes.
- C. Attach the power supply to the case with the screws provided.



Attach the power supply with the provided screws.

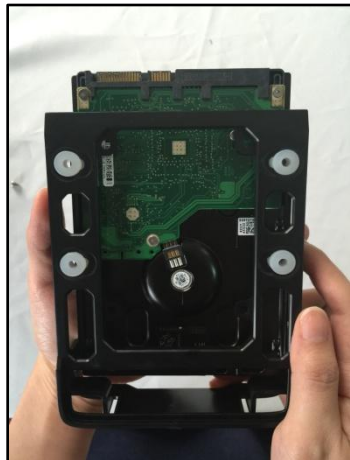
*****See Section 4.3 for PSU filter removal instructions***

2.5 Internal 3.5" / 2.5" Device Installation

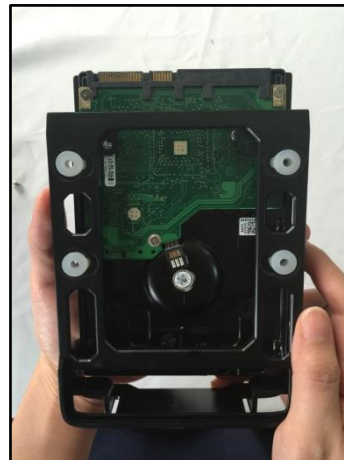
The P380 has eight drive bays that are compatible with both 3.5" and 2.5" drives.

To install a 3.5" drive:

- A. Remove one of the drive trays by pinching the ends of the tray inward and pulling the drive tray out.
- B. Place your 3.5" drive on the tray so that the holes line up with the silicone grommets.
- C. Using the 3.5" drive screws (E in Section 1.3), secure your 3.5" drive to the tray. We recommend using your hand to find the exact threading of the drive's holes then using a screwdriver to completely secure your drive. **Do not over-tighten the screws** as this will minimize the grommets' ability to reduce vibration.



Use your hand to find the drive's holes.



Screw in the holes to secure your drive.

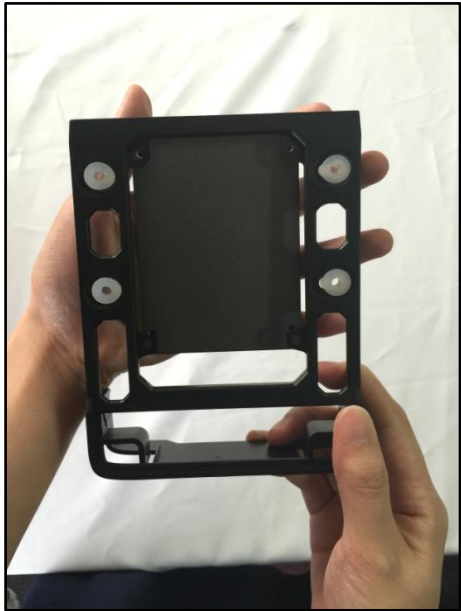
- D. Now that your drive is secure to the tray, pinch the ends of the tray and insert your drive into the bay. You will hear your device click into place.



Pinch the ends of the tray and insert your drive until it clicks.

To install a 2.5" drive:

- A. Extract one of the drive trays by pinching the ends of the tray inward and pulling the drive tray out.
- B. Place your 2.5" drive on the tray so that the holes line up with the 2.5" tray holes.
- C. Using the 2.5" drive screws (D in Section 1.3), secure your 3.5" drive to the tray with a screwdriver.
- D. Now that your drive is secure to the tray, pinch the ends of the tray and insert your drive into the bay. You will hear your device click into place.



A&B



C



D

To remove the Hard disk cages

P380 has three HDD cages. Three of them are removable. The following illustration shows how to remove Top, Middle and bottom of HDD cages.

Top of HDD cage

Top of HDD cage and 5.25" bay are designed as a set, therefore they should be loosen together at the same time.

- A. Remove the front panel first. (How to remove the front panel, please see the section 4.2)
- B. Once you are going to take it out from the case, just loosen the screws around it. (as shown on the graph)



Front of chassis



Inside of chassis



Side face of chassis



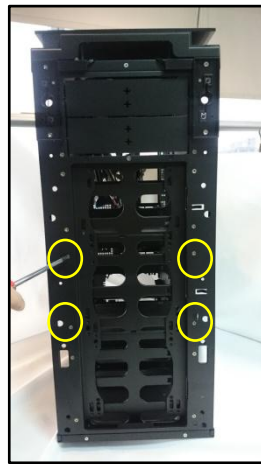
Another side of chassis

Middle of HDD cage

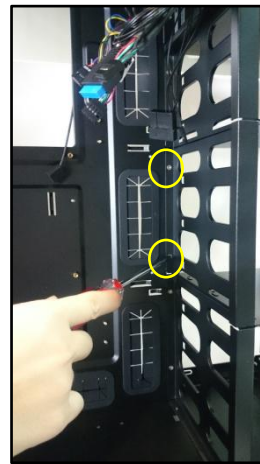
- A. Remove the front panel (How to remove the front panel, please see the section 4.2)
- B. Loosen 4 screws at the front side of chassis (yellow circle), right side of bracket can be lifted up and out of the chassis.
- C. Loosen 2 screws at the inside of chassis (yellow circle), left side of bracket can also be lifted straight out.
- D. The middle of HDD cage is complete dismantling.



A



B



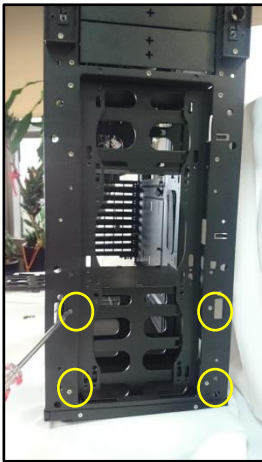
C



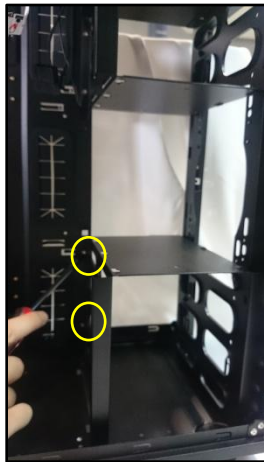
D

Bottom of HDD cage

- E. Loosen 4 screws at the front side of chassis (yellow circle)
- F. Loosen 2 screws at the inside of chassis (yellow circle)
- G. Lay the chassis on a flat surface and remove loosen screws at the bottom of chassis; and you will fully remove the bottom of cage by sliding it
- H. Middle and bottom of HDD cage are complete dismantling.



E



F



G



H

2.6 Slim Optical Drive Tray Installation

The P380 has an external bay located at the front of the chassis. And the slim optical drive tray is attached in the tool pack with P380

- A. Before install the slim ODD tray, the front panel must be removed from the chassis. (Please see the section 4.2)
- B. Remove the front air filter (see section 4.3) and facing the rear of panel, place your slim ODD tray on the panel so that the holes line up with the slim ODD tray holes.
- C. Using the slim ODD screws (G in Section 1.3), secure your slim ODD to the panel.



A



B



C

2.7 Cable Management

There is a cable management compartment between the motherboard and right side panel, as well as cable tiedowns located on the back of the motherboard panel. You can tuck excess cables in this compartment or route them to the drive bays.

Choose the cables you would like to pass through the holes behind the motherboard tray. Pull them through the hole toward the right side of the case.

Use the zip ties provided to hold your cables in place. Zip ties can be anchored to tiedown locations located on the back of the motherboard panel.

For cables which will be routed back to front drives or other internal accessories, feed the cables back through the insertion point nearest the destination of the cable. Connect the cable and then pull the slack back to the right side of the case.



***Use the grommet-lined cable routing holes to route PSU cables.
The yellow circle shows a cable tiedown.***

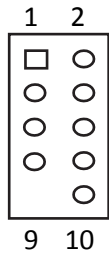
For cables which will be routed directly to front drives or other internal accessories, cable tiedowns are located along the drive cage. Bundle front drives' or other internal accessories' cables together and secure them using tiedowns.

Section 3

Front I/O Ports

3.1 USB 2.0

Connect the front I/O panel USB cable to the USB header pin on your motherboard. Check your motherboard user's manual to ensure that it matches the table below:

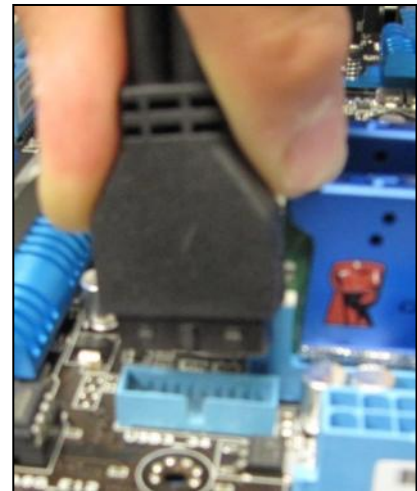


Pin	Signal Names	Pin	Signal Names
1	USBPower1	2	USBPower2
3	NegativeSignal1	4	NegativeSignal2
5	PositiveSignal1	6	PositiveSignal2
7	Ground1	8	Ground2
9	Key(No Connection)	10	Empty Pin

3.2 USB 3.0

The P380 comes with two front panel USB 3.0 ports and includes an internal motherboard connector. To access USB 3.0 capability from the front panel:

1. Identify the USB 3.0 header on your motherboard.
2. Connect the USB 3.0 header to the motherboard port. Be sure to align the connector in the proper orientation so that you do not damage the pins on your motherboard.



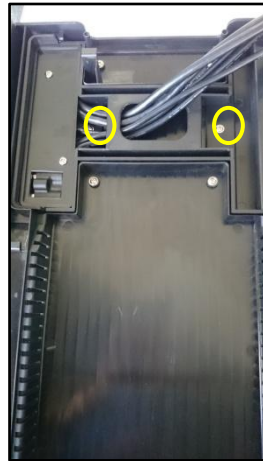
Align the connector properly to prevent damage to your motherboard.

How to flip the I/O port from both sides

- A. Screw off two screws located on the rear of top cover and slide the cover back toward the rear of the chassis.
- B. Turn over the top case, and unscrew two screws as it shows on the graph.
- C. Pull the I/O cable out, and screw it back by rotating 180 degree.



A



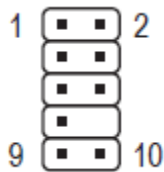
B



C

3.3 AC'97 / HD Audio Ports

There is an Intel® standard 10-pin AC'97 connector and an Intel® 10-pin HDA (High Definition Audio) connector linked to the front panel of the chassis.

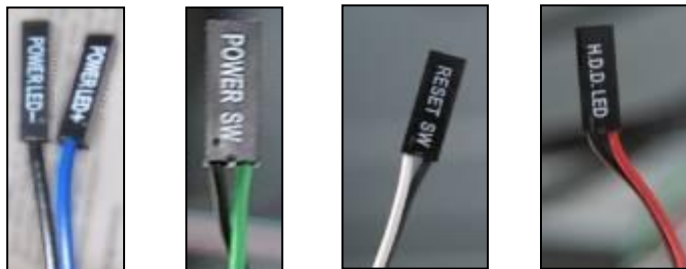


Pin	Signal Names (HDA)	Pin	Signal Names (AC'97)
1	MIC2L	1	MIC In
2	AGND	2	GND
3	MIC2R	3	MIC Power
4	AVCC	4	NC
5	FRO-R	5	Line Out(R)
6	MIC2_JD	6	Line Out(R)
7	F_IO_SEN	7	NC
8	Key (no pin)	8	Key (no pin)
9	FRO-L	9	Line Out(L)
10	LINE2_JD	10	Line Out(L)

You can connect either the AC'97 or the HDA connector, depending on your motherboard. Locate the internal audio connectors from your motherboard or sound card and connect the corresponding audio cable. Consult your motherboard or sound card manual for the pin-out positions. Even if your system supports both standards, only use one connector.

3.4 Power Switch / Reset Switch / Hard Disk Drive LED Connectors

Connected to your front panel are LED leads for power and HDD activity, as well as switch leads for the power and reset buttons. Attach these to the corresponding connectors on your motherboard. Consult your motherboard manual for specific pin header locations. For LEDs, colored wires are positive (+). White or black wires are negative (-). If the LED does not light up when the system is powered on, try reversing the connection. For more information on connecting LEDs to your motherboard, see your motherboard user's manual.



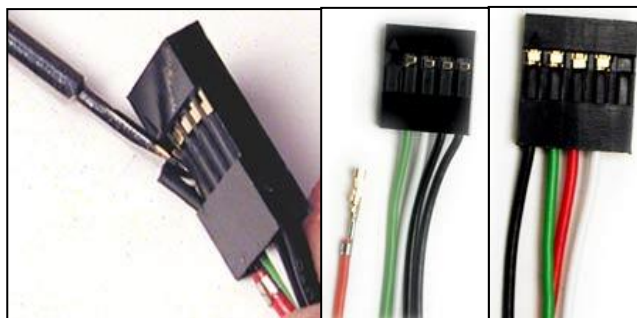
Front panel leads

Note: Polarity (positive and negative) does not matter for switches.

3.5 Rewiring Motherboard Header Connections

There may come a time when you need to reconfigure the pin-out of a motherboard header connector. Examples could be for your USB header, audio input header, or some other front panel connector such as the Power Button connector.

Before performing any work, please refer to your motherboard user's manual or your motherboard manufacturer's website to confirm the pin-out needed for your connector. We strongly recommend making a notated drawing before beginning work so that you can recover if your work gets disturbed.



Front panel headers

Determine which wires you need to remove in order to rewire your plug to match the USB pin-outs on your motherboard (refer to your motherboard user's manual). Working on one connector at a time, use a very small flathead screwdriver or similar tool to lift up on the black tab located beside the gold posts (squares). This will allow you to easily slide out the pins from the USB plug.

Working carefully so as not to damage the wires, connectors, or pins, slowly remove the pin from the connector. Repeat these steps for each wire you need to change.

Working carefully so as not to damage the wires, connectors or pins, slowly insert the pin into the correct slot of the connector then snap closed the black tab that was lifted in step 1. Repeat these steps for each wire you need to change.

Section 4

Cooling System

4.1 Included Fans

The P380 comes with two standard top 140 mm TwoCool™ fans and a standard rear 120 mm TwoCool™ fan. These fans have two-speed switches that let you choose the speed best suited to your need. The default fan speed setting is Low.

120 mm TwoCool™ fan specifications:

Size	120 x 120 x 25 mm two-speed fan
Rated Voltage	12V DC
Operating Voltage:	12V±10%

Speed	Input Current	Airflow	Static Pressure	Noise	Input Power
High 1200RPM ±10%	0.20A	1.208 m ³ / min (42.64CFM)	0.96 mm-H ₂ O (0.037 inch-H ₂ O)	23.65 dBA	2.4W
Low 600RPM ±10%	0.10A	0.604 m ³ / min (21.32CFM)	0.24 mm-H ₂ O (0.009 inch-H ₂ O)	17.00 dBA	1.2W

140 mm TwoCool™ fan specifications:

Size	140 x 140 x 25.4 mm two-speed fan
Rated Voltage	12V DC
Operating Voltage:	12V±10%

Speed	Input Current	Airflow	Static Pressure	Noise	Input Power
High 1200RPM ±10%	0.24A	1.926 m ³ / min (68.00CFM)	1.00 mm-H ₂ O (0.037 inch-H ₂ O)	27.80 dBA	2.88W
Low 800RPM ±10%	0.12A	1.284 m ³ / min (45.33CFM)	0.444 mm-H ₂ O (0.017 inch-H ₂ O)	19.00 dBA	2.88W

4.2 Optional Fans

The P380 includes mounts for up to three more fans. These mounts are as follows:

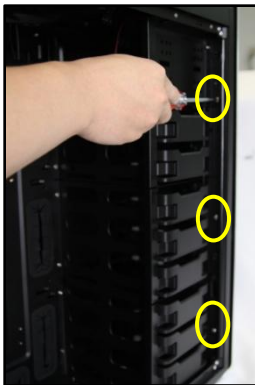
- 3 x 120mm/2 x 140mm front intake fan mount

Front intake 120 mm /140mm fans

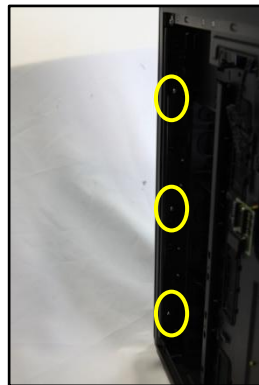
You can install these fans using 2 of the long screws provided (F in Section 1.3).

How to remove the front panel and install the fan

- Loosen six screws, three at each side of the chassis.
- Use flathead screwdriver to pull open the front panel.
- Align the fan on the mounting holes and using 2 of the long screws provided (F in Section 1.3), and be sure to screw in the fan in the top-left and lower-right holes first. (as pictured).



A



B



C

Note: you can install maximum three 120mm fans on the front case.

Top exhaust 120 mm/140mm fans

The P380 includes three 120mm top fan mounts or two 140mm top fan mounts

How to remove the top cover

- Screw off two screws located on the rear of top cover.
- Slide the cover back toward the rear of the chassis.
- Align your fan with the pegs that correspond with the fan screw holes on the fan.
- Push your fan into the slot until secure. You will hear your fan lock into place when the brackets around the fan snap into place.



4.3

Air Filters

There are two filters in the P380 that can be removed and washed. One filter is the front filter and the other is the PSU intake filter. You can access the front filter by pulling down the tabs at the bottom of the chassis.



Note: From time to time it will be necessary to wash the installed air filter. Not washing the air filter will result in higher system temperatures and possible stability problems. We recommend checking the air filter at least once a month initially. The frequency will change depending on system usage (users whose systems run 24/7 will likely have to check/wash more often than those who don't use their systems every day) and on environmental conditions.

The P380 features a removable PSU filter that can be unlocked for maintenance and locked for transport. To remove the PSU filter, push the ends of the filter down then pull the filter toward you using the tab outside of the chassis. You can also lock the filter by pushing up on the tab (once the filter is completely inside the chassis).



Push down on the ends of the filter to unlock it.



Remove the filter by pulling on the tab outside the chassis.

Antec, Inc.

47900 Fremont Blvd.
Fremont, CA94538
tel: 510-770-1200
fax: 510-770-1288

Antec Europe B.V.

Stuttgartstraat 12
3047 AS Rotterdam
The Netherlands
tel: +49-40-226139-22
fax: +31 (0) 10 437-1752

Technical Support

US & Canada
1-800-22ANTEC
customersupport@antec.com

Europe

+31 (0) 10 462-2060
europe.techsupport@antec.com
www.antec.com

© Copyright 2014 Antec, Inc. All rights reserved.

*All trademarks are the property of their respective owners.
Reproduction in whole or in part without written permission is prohibited.*