

USB 3.0 to M.2 NGFF SSD Enclosure with UASP

SM2NGFFMBU33



*actual product may vary from photos

DE: Bedienungsanleitung - de.startech.com

FR: Guide de l'utilisateur - fr.startech.com

ES: Guía del usuario - es.startech.com

IT: Guida per l'uso - it.startech.com

NL: Gebruiksaanwijzing - nl.startech.com

PT: Guia do usuário - pt.startech.com

For the most up-to-date information, please visit: www.startech.com

FCC Compliance Statement

This equipment has been tested and found to comply with the limits for a Class B digital device, pursuant to part 15 of the FCC Rules. These limits are designed to provide reasonable protection against harmful interference in a residential installation. This equipment generates, uses and can radiate radio frequency energy and, if not installed and used in accordance with the instructions, may cause harmful interference to radio communications. However, there is no guarantee that interference will not occur in a particular installation. If this equipment does cause harmful interference to radio or television reception, which can be determined by turning the equipment off and on, the user is encouraged to try to correct the interference by one or more of the following measures:

- Reorient or relocate the receiving antenna.
- Increase the separation between the equipment and receiver.
- Connect the equipment into an outlet on a circuit different from that to which the receiver is connected.
- Consult the dealer or an experienced radio/TV technician for help

This device complies with part 15 of the FCC Rules. Operation is subject to the following two conditions: (1) This device may not cause harmful interference, and (2) this device must accept any interference received, including interference that may cause undesired operation.

Changes or modifications not expressly approved by StarTech.com could void the user's authority to operate the equipment.

Industry Canada Statement

This Class B digital apparatus complies with Canadian ICES-003.

Cet appareil numérique de la classe [B] est conforme à la norme NMB-003 du Canada.

CAN ICES-3 (B)/NMB-3(B)

Use of Trademarks, Registered Trademarks, and other Protected Names and Symbols

This manual may make reference to trademarks, registered trademarks, and other protected names and/or symbols of third-party companies not related in any way to StarTech.com. Where they occur these references are for illustrative purposes only and do not represent an endorsement of a product or service by StarTech.com, or an endorsement of the product(s) to which this manual applies by the third-party company in question. Regardless of any direct acknowledgement elsewhere in the body of this document, StarTech.com hereby acknowledges that all trademarks, registered trademarks, service marks, and other protected names and/or symbols contained in this manual and related documents are the property of their respective holders.

Table of Contents

Product Diagram	1
Enclosure.....	1
Internal Drive Tray.....	1
Introduction	2
Packaging Contents	2
System Requirements.....	2
Hardware Installation	3
How to Use	8
Connecting the Hard Drive.....	8
Powering the Drive Enclosure	8
Disconnecting the Hard Drive	8
Initializing the Hard Drive	9
Technical Support	10
Warranty Information.....	10

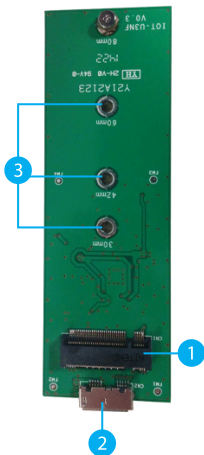
Product Diagram

Enclosure



1. Drive tray screws
2. USB 3.0 Micro-B port

Internal Drive Tray



1. M.2 (NGFF) SSD Connector
2. Drive installation bracket
3. Drive length adjustment holes

Introduction

Packaging Contents

- 1 x USB 3.0 SATA HDD/SSD Enclosure
- 1 x USB 3.0 Cable
- 1 x SSD Mounting Screw and Standoff
- 1 x Mini Screw Driver
- 1 x Instruction Manual

System Requirements

System Requirements

- Computer system with available USB 3.0 (5 Gbit/s) port or USB 2.0 port (480Mbps)
- M.2 NGFF SATA SSD Drive

Tool Requirements

- 5mm nut driver or small pliers
- Size 1 (PH1) Philips head screw driver

Hardware Installation

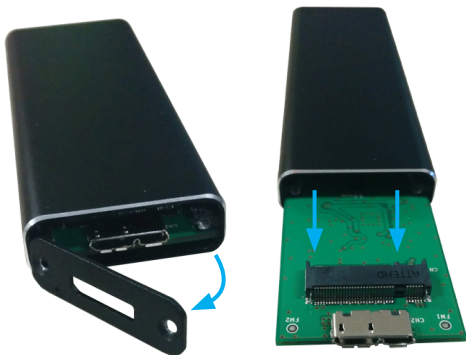
WARNING! SSD Drives and storage adapters require careful handling. If you are not careful with your SSD Drive, lost data may result. Always handle your drive with caution. Be sure that you are properly grounded by wearing an anti-static strap when handling computer components or discharge yourself of any static electricity build-up by touching a large grounded metal surface (such as the computer case) for several seconds.

1. Using a Philips head screw driver (not included) Remove the 2 drive tray screws on either side of the USB 3.0 Micro B port, on the front of the enclosure.

Note: The included screw driver is specifically for the SSD installation screw and will be too small to open the enclosure.



2. Remove the front plate, and slide the internal drive tray out.



3. Install your M.2 SSD into the drive tray, by following the below steps.
- a.** Determine if the drive installation bracket requires relocating by assessing your drive length. The board is labeled with the respective drive types for length but if your drive type is unknown, place your SSD next to the M.2 (NGFF) SSD connector, note which drive installation hole matches the height of your SSD. If the bracket is already installed in the correct position please proceed to step (d.).



- b. (Only required if the drive installation bracket requires relocating)** Remove the nut holding the standoff in place on the reverse side of the drive tray using a small set of pliers or 5mm nut driver (Not included).



c. (Only required if the drive installation bracket requires relocating) Reseat the drive installation standoff in the drive installation hole that matches your SSD. Replace the removed nut on the reverse side by using a small set of pliers or 5mm nut driver (not included)



d. Using the included screw driver, remove the screw threaded into the drive mounting stand



Note: The connector on your M.2 SSD is keyed so the drive will only fit one way.

e. Slide the M.2 connector on the SSD into the M.2 reciprocal connector on the drive tray.

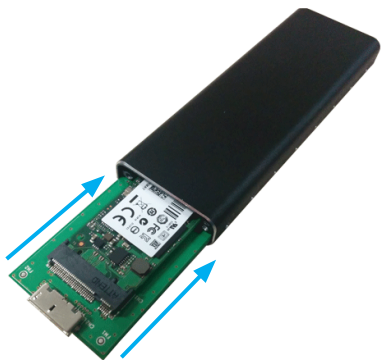


f. Press the drive down toward the drive mounting standoff, and drive the removed screw through the mounting hole on your SSD drive and into the drive mounting standoff using the included Philips head screw driver.



Your M.2 SSD is now installed in the internal drive tray.

4. Slide the internal drive tray back into the enclosure so that the USB 3.0 Micro B connector is facing outward, and place back into position so that the mounting holes line up.



5. Using a Philips head screw driver (not included), replace the 2 drive tray screws on either side of the USB 3.0 Micro B port, on the front of the enclosure.



6. Using the included USB 3.0 cable, connect the SSD enclosure to your computer system.

Your SSD enclosure is now ready to use.

How to Use

Connecting the Hard Drive

Once the enclosure has been attached to a computer, and the OS has installed the necessary software, the drive will be accessible as though it were installed within the system.

Prior to using the drive, it will need to be formatted according to your operating system requirements. To format your newly attached hard drive, or create partitions, please see the Initializing the Hard Drive section.

Powering the Drive Enclosure

The hard drive enclosure requires no external power supply, as it is capable of receiving enough power from the USB Bus to which it is connected.

Disconnecting the Hard Drive

Windows

1. Select the "Safely remove Hardware and Eject Media" icon, located in the task bar.
2. Select the storage device from the list that appears.
3. Wait for the message indicating that it is now safe to remove the device.

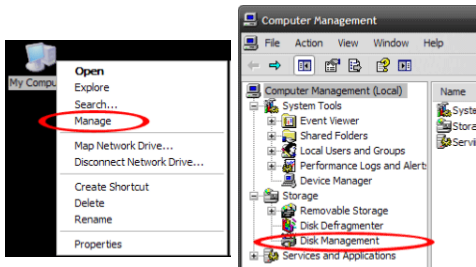
Note: Removing the connected drive prior to receiving notification that it is safe to do so, could result in losing or corrupting data stored on the drive. Once the Safe to Remove Hardware message appears, please disconnect the enclosure from the computer by removing the USB connection.

Mac OS X

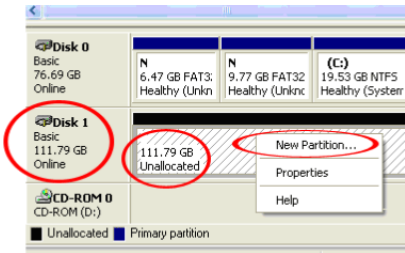
To safely disconnect the attached drive from the host computer, close any windows listing the contents of the removable drive. Once all windows are closed, click on the USB storage icon on the desktop, and drag it to the Trash Can icon on the desktop. Allow 5 seconds before physically removing the enclosure/drive from the computer.

Initializing the Hard Drive

1. If the SATA Hard Drive is blank it may need to be initialized and formatted before use. From the main Windows desktop, right-click on "My Computer" ("Computer" in Vista/ 7 / 8/ 8.1), then select Manage. In the new Computer Management window, select Disk Management from the left window panel.



2. A dialog window should automatically appear, asking you to initialize the drive. Depending on the version of Windows, it will give you the option of either creating an "MBR" or "GPT" disk. GPT (GUID partition) is not compatible with some older operating systems, while MBR is supported by newer and older operating systems.
3. Once initialized, locate the Disk that says it is "Unallocated" (check the listed hard drive capacity to confirm it's the correct hard drive) and then right-click in the section that says "Unallocated" and select "New Partition".



4. Follow the on screen prompts to initialize the drive in the format of your choice.

Technical Support

StarTech.com's lifetime technical support is an integral part of our commitment to provide industry-leading solutions. If you ever need help with your product, visit www.startech.com/support and access our comprehensive selection of online tools, documentation, and downloads.

For the latest drivers/software, please visit www.startech.com/downloads

Warranty Information

This product is backed by a two year warranty.

In addition, StarTech.com warrants its products against defects in materials and workmanship for the periods noted, following the initial date of purchase. During this period, the products may be returned for repair, or replacement with equivalent products at our discretion. The warranty covers parts and labor costs only. StarTech.com does not warrant its products from defects or damages arising from misuse, abuse, alteration, or normal wear and tear.

Limitation of Liability

In no event shall the liability of StarTech.com Ltd. and StarTech.com USA LLP (or their officers, directors, employees or agents) for any damages (whether direct or indirect, special, punitive, incidental, consequential, or otherwise), loss of profits, loss of business, or any pecuniary loss, arising out of or related to the use of the product exceed the actual price paid for the product. Some states do not allow the exclusion or limitation of incidental or consequential damages. If such laws apply, the limitations or exclusions contained in this statement may not apply to you.

Hard-to-find made easy. At StarTech.com, that isn't a slogan. It's a promise.

StarTech.com is your one-stop source for every connectivity part you need. From the latest technology to legacy products — and all the parts that bridge the old and new — we can help you find the parts that connect your solutions.

We make it easy to locate the parts, and we quickly deliver them wherever they need to go. Just talk to one of our tech advisors or visit our website. You'll be connected to the products you need in no time.

Visit www.startech.com for complete information on all StarTech.com products and to access exclusive resources and time-saving tools.

StarTech.com is an ISO 9001 Registered manufacturer of connectivity and technology parts. StarTech.com was founded in 1985 and has operations in the United States, Canada, the United Kingdom and Taiwan servicing a worldwide market.