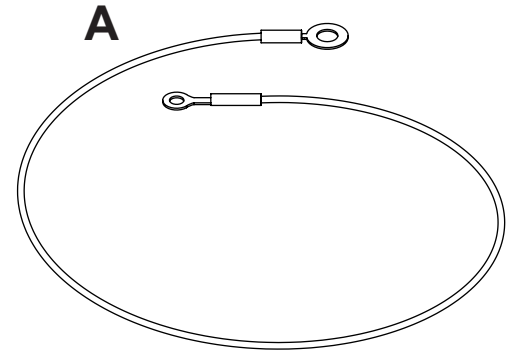




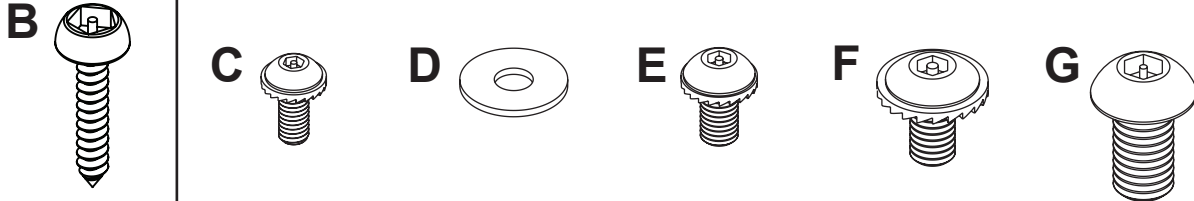
Installation and Assembly: Mounting Hardware for Safety and Security Cable Kit

Model: HLC-KIT, HLC-KIT-Q10

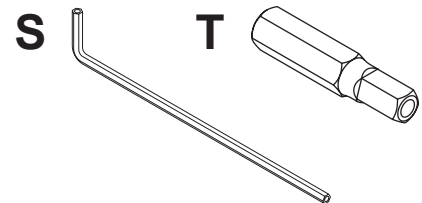
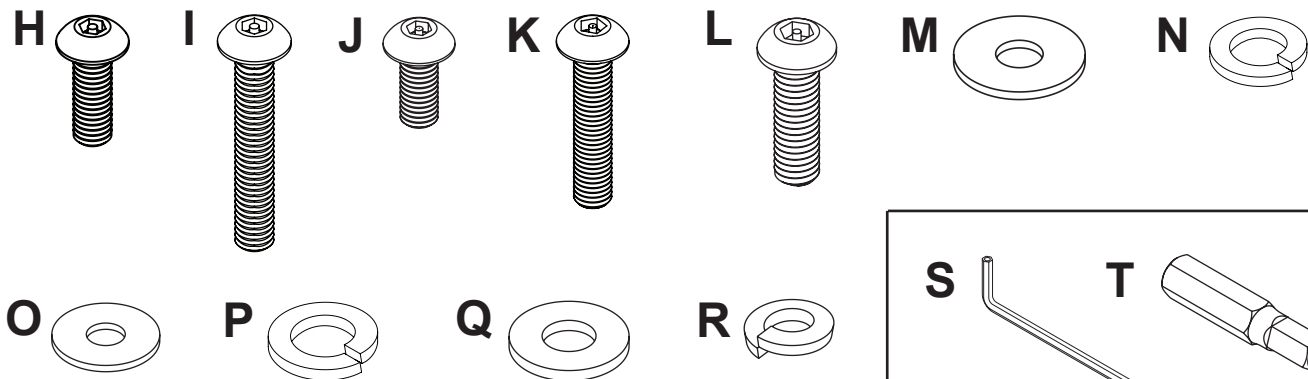
Parts List Description	HLC-KIT		HLC-KIT-Q10	
	Qty.	Part Number	Qty.	Part Number
A safety cable	1	600-0187	10	600-0187
B 10-16 x 3/4" penta pin wood screw	1	520-9258	10	520-9258
C M4 x 12 mm socket pin screw	1	510-1060	10	510-1060
D #10 flat washer	1	540-9400	10	540-9400
E M5 x 10 mm socket pin serrated washer head screw	1	510-1126	10	510-1126
F M6 x 12 mm socket pin serrated washer head screw	1	510-1050	10	510-1050
G M8 x 15 mm socket pin screw	1	520-1068	10	520-1068
H M4 x 12 mm socket pin screw	1	520-1079	10	520-1079
I M4 x 25 mm socket pin screw	1	520-2082	10	520-2082
J M5 x 12 mm socket pin screw	1	520-1064	10	520-1064
K M5 x 25 mm socket pin screw	1	520-1122	10	520-1122
L M6 x 20 mm socket pin screw	1	520-9554	10	520-9554
M M4 flat washer	1	540-2081	10	540-2081
N #8 split lock washer	1	540-2044	10	540-2044
O #10 flat washer	1	540-9400	10	540-9400
P #10 split lock washer	1	540-1035	10	540-1035
Q 1/4" flat washer	1	540-9440	10	540-9440
R 1/4" split lock washer	1	540-9402	10	540-9402
S 4 mm allen wrench	1	560-9646	3	560-9646
T M5 x 1" penta pin tool	1	520-9249	3	520-9249



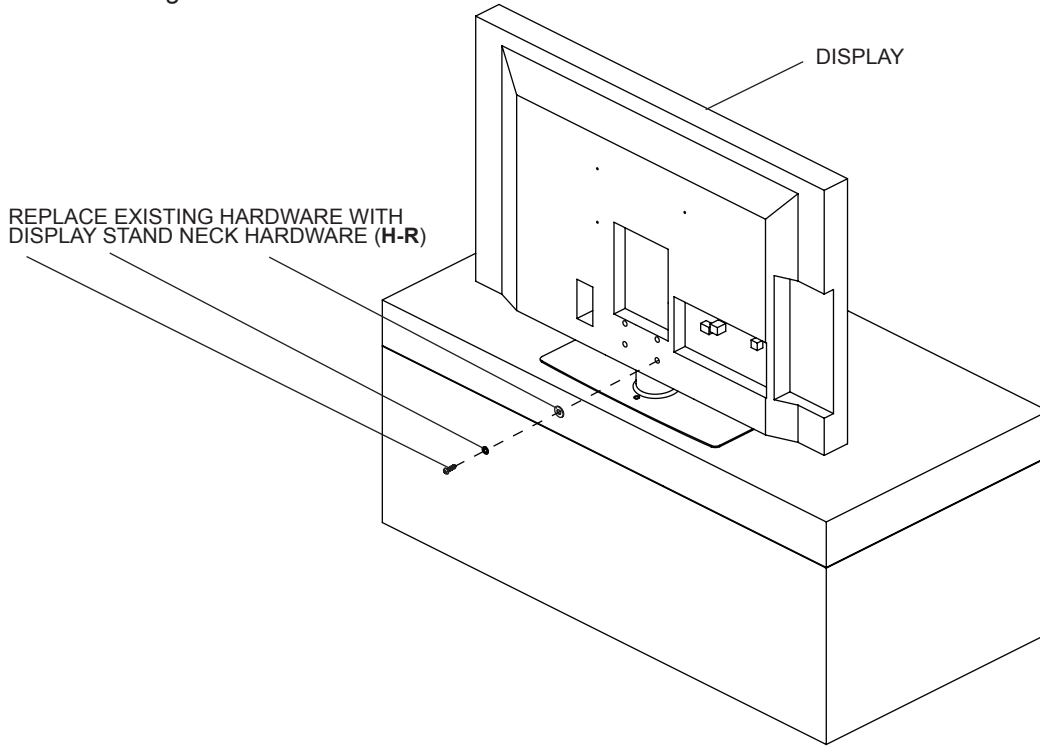
BACK OF DISPLAY HARDWARE



DISPLAY STAND NECK HARDWARE

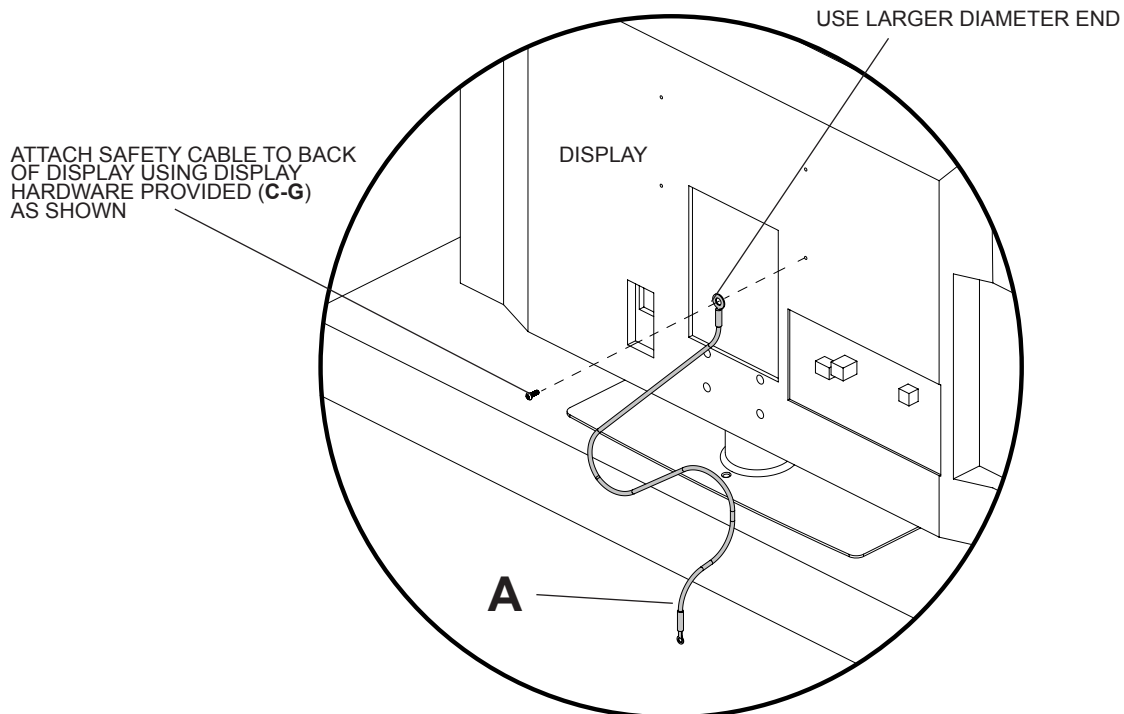


- 1** Remove one stand mounting screw (provided with display) and replace it with display stand neck hardware provided (**H-R**).
NOTE: Verify that washer diameter is smaller than the recess it is going into. Not doing so may result in difficulty removing the washer.



Attaching Safety/Security Cable to Display

- 2** Attach larger diameter end of safety cable (**A**) to back of display as shown using back of display hardware provided (**C-G**).
WARNING: Safety cable is not to support the weight of the display.



Attaching Safety/Security Cable to Mounting Surface

- 3** Attach smaller diameter end of safety cable (**A**) using one 10-16 x 3/4" penta pin wood screw (**B**).
NOTE: Safety cable can be mounted to any secure wood surface.

