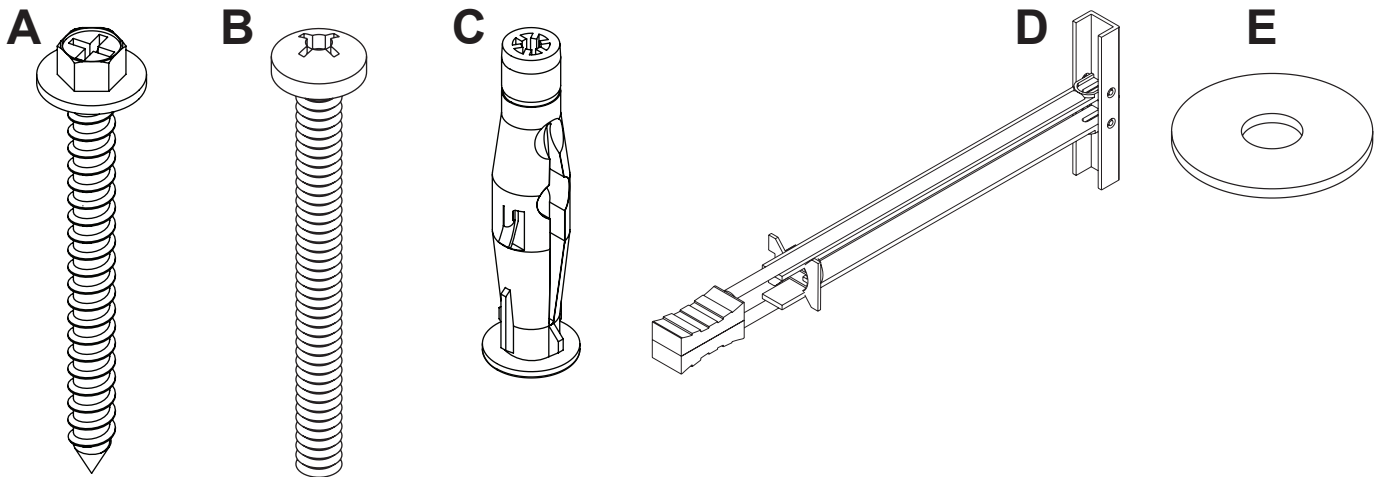




Installation and Assembly: Mounting Hardware for IWB600-SB, and IWB600-UNIV

Model: ACC605, ACC610

Parts List Description	ACC610		ACC605	
	Qty.	Part Number	Qty.	Part Number
A #14 x 2.5" hex head wood screw	4	5S1-015-C04	6	5S1-015-C04
B 1/4 - 20 x 2.5" phillips screw	4	520-9521	6	520-9521
C concrete anchor	4	590-0320	6	590-0320
D 1/4 -20 toggler	4	560-9708	6	560-9708
E 1/4" flat washer	4	540-9440	6	540-9440



Installation to Wood Stud Wall.....Page 2
 Installation to Concrete or Cinder Block Wall.....Page 3
 Installation to Metal Stud Wall.....Page 4

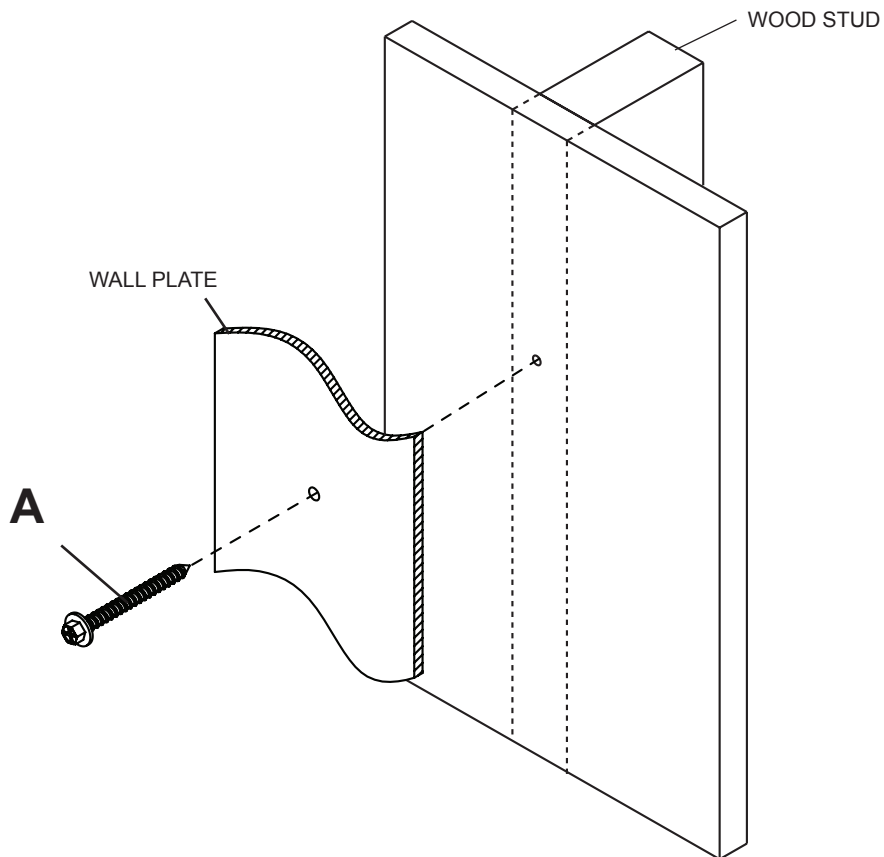
NOTE: Use IWB600-SB, and IWB600-UNIV Instruction sheets to determine mounting hardware locations

Installation to Wood Stud Wall

⚠ WARNING

- Installer must verify that the supporting surface will safely support the combined load of the equipment and all attached hardware and components.
- Tighten wood screws so that wall plate is firmly attached, but do not overtighten. Overtightening can damage the screws, greatly reducing their holding power.
- Never tighten in excess of 80 in. • lb (9 N.M.).
- Make sure that mounting screws are anchored into the center of the stud. The use of an "edge to edge" stud finder is highly recommended.
- Hardware provided is for attachment of mount through standard thickness drywall or plaster into wood studs. Installers are responsible to provide hardware for other types of mounting situations.

- 1 Use a stud finder to locate the edges of the studs. Use of an edge-to-edge stud finder is highly recommended. Based on their edges, draw a vertical line down each stud's center. Place wall plate on wall as a template. Level plate, and mark the center of the mounting holes. Drill 5/32" (4 mm) dia. holes 2.5" (64 mm) deep. Make sure that the wall plate is level, secure it using #14 x 2.5" hex head wood screws (**A**) as shown.



Installation to Concrete or Cinder Block Wall

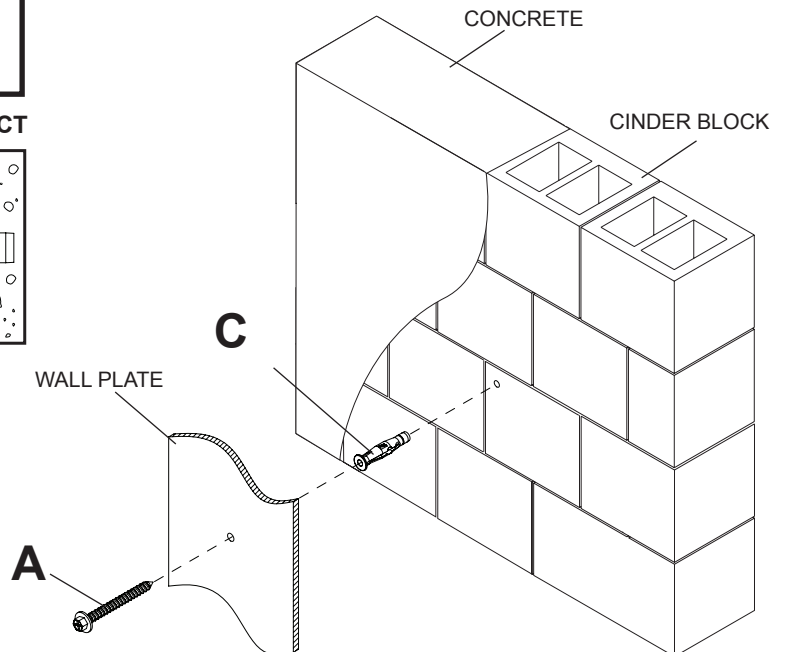
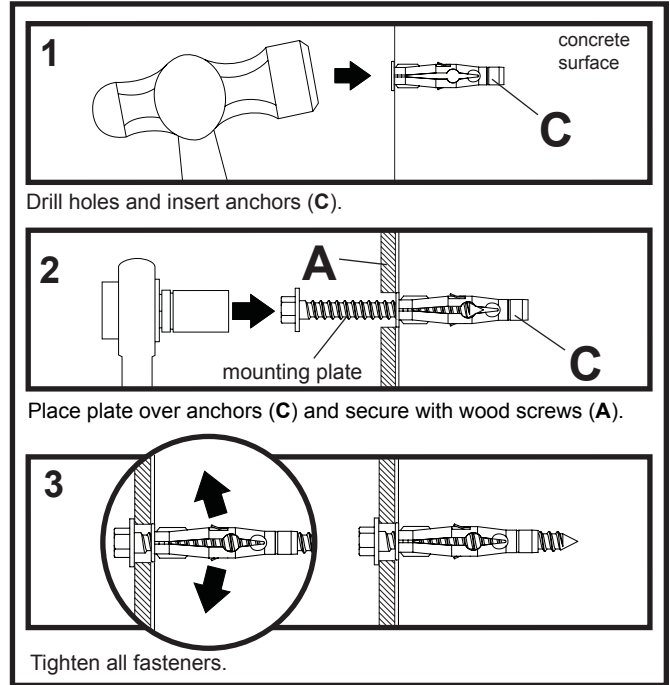
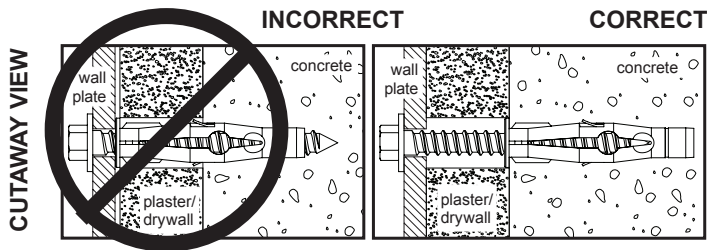
⚠ WARNING

- When installing Peerless wall mounts on cinder block, verify that you have a minimum of 1-3/8" (35 mm) of actual concrete thickness in the hole to be used for the concrete anchors. Do not drill into mortar joints! Be sure to mount in a solid part of the block, generally 1" (25 mm) minimum from the side of the block. Cinder block must meet ASTM C-90 specifications. It is suggested that a standard electric drill on slow setting is used to drill the hole instead of a hammer drill to avoid breaking out the back of the hole when entering a void or cavity.
- Concrete must be 2000 psi density minimum. Lighter density concrete may not hold concrete anchor.
- Make sure that the wall will safely support four times the combined load of the equipment and all attached hardware and components.

- 1** For Concrete Surfaces use wall plate as a template, level and mark center of mounting holes. Drill 5/16" (8 mm) dia. holes to a minimum depth of 2.5" (64 mm). Insert anchors (C) into holes flush with wall, place wall plate over anchors and secure with #14 x 2.5" hex head wood screws (A) as shown right. Make sure wall plate is level, and tighten all fasteners.

⚠ WARNING

- Tighten screws so that wall plate is firmly attached, but do not overtighten. Overtightening can damage screws, greatly reducing their holding power.
- Never tighten in excess of 80 in. • lb (9 N.M.).
- Always attach concrete expansion anchors directly to load-bearing concrete.
- Never attach concrete expansion anchors to concrete covered with plaster, drywall, or other finishing material. If mounting to concrete surfaces covered with a finishing surface is unavoidable, the finishing surface must be counter bored as shown below. Be sure concrete anchors do not pull away from concrete when tightening screws. If plaster/drywall is thicker than 5/8" (16 mm), custom fasteners must be supplied by installer.

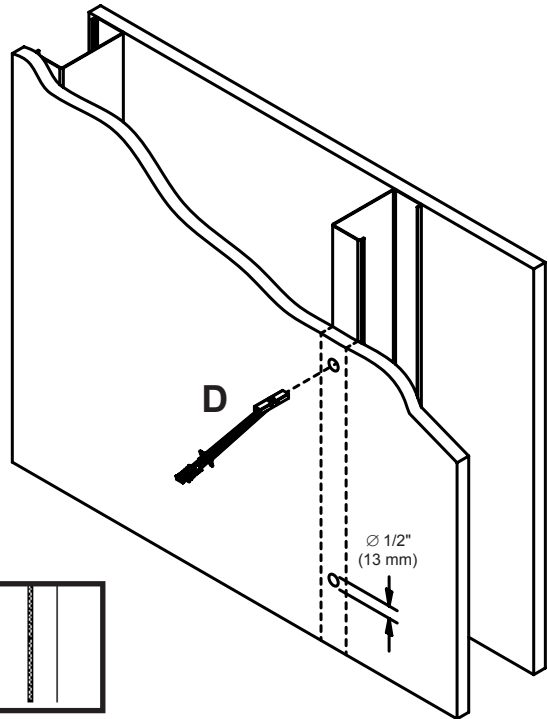


Installation to Metal Stud Wall

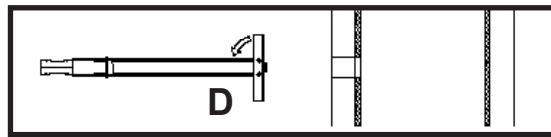
- 1 FOR METAL STUD WALLS ONLY:** Drill four 1/2" (13mm) dia. holes through drywall and studs at locations corresponding to wall plate. Insert togglers (D) as shown below.

WARNING

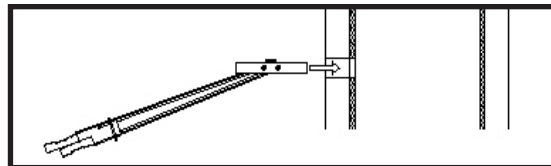
- Product must be mounted through drywall that has a minimum thickness of 1/2" and into metal studs, 26 gauge or heavier.
- Make sure that togglers are anchored into the center of the studs as shown in figure 1. The use of an "edge to edge" stud finder is highly recommended.



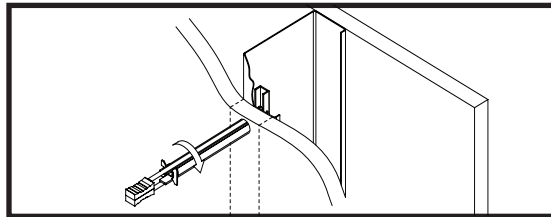
- 1-1** Pivot end of toggler (D).



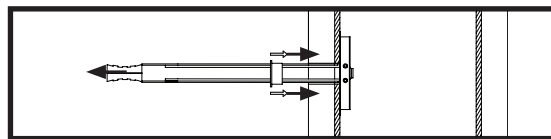
- 1-2** Push into hole.



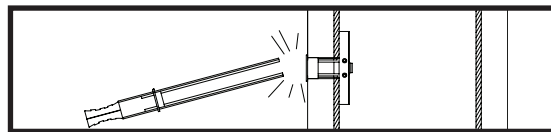
- 1-3** Rotate toggler (D) clockwise to wedge it against inside walls of metal stud.



- 1-4** Slide plastic cap forward while pulling back firmly on ring.



- 1-5** Break off excess.



- 1-6** Align wall plate with hole in wall and fasten using 1/4-20 x 2.5" screw (B) and 1/4" washer (E).

