



E4 Series User Manual

© 2009 Ematic 1-888-968-1985 <http://www.Ematic.us>

Windows and Windows Media Player are registered trademarks of Microsoft Corporation

Mac OS X and iTunes are registered trademarks of Apple Inc.

Linux is a registered trademark of Linus Torvalds

YouTube is a registered trademark of Google, Inc.

Table of Contents

1.0	Introduction	1
1.1	Foreword	1
1.2	Package Contents	1
1.3	Warnings	1
1.4	Computer Requirements	1
1.5	Layout of the Player	3

Part I: Computer Operations

2.0	Connecting and Charging the Player	5
2.1	Connecting and Disconnecting the Player from Your Computer	5
2.2	Charging the Battery	5
3.0	Video Conversion	6
3.1	Installing Video Conversion Software	6
3.2	Converting Video	6
3.3	Using Other Conversion Software	7
3.4	Converting Video in Linux.....	7
4.0	Copying Files	8
4.1	Copying Media Files to your Player.....	8
4.2	Using Windows Media Player 11 [®] 's Sync Function	9
5.0	Expanding the Player's Storage	10
5.1	Preparing a Micro TF Cards for Use.....	10
6.0	Using the ArcSoft MediaImpression Software	11
6.1	Using the MediaImpression Downloader.....	11

Part II: Player Operations

7.0	Basic Operations.....	13
7.1	Turning the Player On and Off.....	13
7.2	The Lock Feature	13
7.3	The Desktop	14
8.0	Watching Videos	15
8.1	Accessing Video Mode	15
8.2	Video Menu	15
8.3	Video Playback.....	16
9.0	Listening to Audio.....	17
9.1	Accessing Audio Mode	17
9.2	Audio Play Operations.....	17
10.0	Viewing Pictures.....	18
10.1	Entering Photos Mode.....	18



10.2	Picture Menu	18
10.3	Picture Viewing.....	19
11.0	Shooting Photographs.....	20
11.1	Entering Camera Mode	20
11.2	Basic Photo Shooting Operations.....	20
12.0	Recording Video.....	21
12.1	Entering DV (Digital Video) Mode.....	21
12.2	Basic Video Shooting Operations.....	21
13.0	Recording Audio.....	22
13.1	Entering Recorder Mode	22
13.2	Basic Recorder Operations	22
14.0	E-Book Operations.....	23
14.1	Entering E-Book Mode	23
14.2	Basic E-Book Operations	23
15.0	Listening to the FM Radio	24
15.1	Entering Radio Mode.....	24
15.2	Basic Radio Operations.....	24
16.0	Web Camera	25
16.1	Using the player as a Web Camera.....	25
17.0	Tools	25
17.1	Entering TOOLS Mode	25
18.0	System Settings	26
18.1	Entering Settings Mode	26
18.2	Basic Settings Operations	26

Miscellaneous

19.0	Formatting the Player.....	28
19.1	Understanding File systems	28
19.2	Reformatting Your Player in Windows	28
20.0	TV OUT.....	29
21.0	Help	29
21.1	For More Help	29
21.2	Troubleshooting.....	30
22.0	Technical Specifications	31
23.0	Limitation of Liability Statement.....	32
23.1	Links to Third Party Sites.....	32
23.2	Limitation of Liability	32



1.0 Introduction

1.1 Foreword

Thank you for purchasing this player. Please read this manual carefully before using the product. Specifications and software updates are subject to change without notice. The player pictured in this manual may differ from yours, but the information in this manual will still apply.

Please visit our website for more information: www.ematic.us

1.2 Package Contents

Your player comes with the following items:

- The Player
- A Stylus
- A USB Cable
- A Cleaning Cloth
- One Pair of Stereo Headphones
- This User Manual
- A Quick-Start Guide
- A CD Containing E-matic video conversion software and Arcsoft Mediaimpression Downloader

1.3 Warnings



- Do not use the unit in extreme temperatures, or dusty/wet environments.
- Do not leave the unit in direct sunlight.
- Only insert or remove microTF cards when the unit is turned off.
- Do not disconnect the player and USB from your computer without first ensuring a “safe removal” as this may damage the unit. See “*Connecting and Disconnecting the Player from Your Computer*” in this manual.
- Do not open or disassemble the unit, as this will void the warranty.
- Handle the unit with care to prevent physical damage.
- Protect the unit from static discharge.

1.4 Computer Requirements

Virtually any computer/operating system able to use USB storage devices can copy files to and from the player. These include Windows[®], Mac OS X[®], and Linux[®].

The following, however, is required in order to use the included Ematic video conversion software:

Operating System	Microsoft Windows 2000, ME, XP, Vista, Windows 7
CPU	800 MHz
CD-ROM	4x speed
Hard Disk	50 MB of available space
USB Port	One standard USB 1.1 or USB 2.0 port



WARNING: In the unlikely event the screen freezes, the device can be rebooted by inserting a pin into the RESET hole at the top of the player.

1.5 Layout of the Player



Basic Operation E4 Series



- 1. Reset Button
- 2. Menu & Exit
- 3. TF Card Slot

- 4. Headphone Jack
- 5. USB Input

- 6. On/Off Switch
- 7. Camera & On/Off

To start your device, press and hold the camera button until the screen turns on; or you can slide the ON/OFF switch to the right and hold until the screen turns on.

To Lock/Unlock your device, slide the ON/OFF switch until a locked/unlocked image is displayed.

In Video or Music mode, double-tap a song or movie to begin playback.

Part I: Computer Operations

2.0 Connecting and Charging the Player

2.1 Connecting and Disconnecting the Player from Your Computer

To **connect** your player to your computer:

1. Turn the player ON.
2. Insert the small end of the included USB cable into the player.
3. Insert the large end into the computer's USB port.

The **first time** you connect the player to your computer; the computer will automatically detect it and install any necessary drivers. When it has finished, the player will appear in *My Computer* as *EMATIC MP3*

To **safely remove** the player from your computer:

1. Click the green arrow in the system tray (the area by the clock on your task bar).
2. A list of attached USB devices will be displayed. Highlight the player in the list.
3. If asked, click STOP. Windows will display a message when it is safe to remove the player.



WARNING: Any USB device that stores data (e.g. flash drives, cameras, and media players) should always be disconnected from your computer using this method to avoid corrupting the stored data.

2.2 Charging the Battery

The player has a built-in battery that must be charged before the player can be used.

1. Turn on the player.
2. Connect the player to a computer using the USB cable (the computer must be ON for the player to charge properly).
3. The player will display a screen that says 'USB Connected.' Wait 15 seconds, then press the MENU/EXIT button and the screen will change to a large recharging battery icon (indicating the player is properly recharging).
4. Let the player charge for **4 hours before initial use. You can charge the player for 2 hours per recharge cycle thereafter.**



3.0 Video Conversion

3.1 Installing Video Conversion Software



WARNING: This player will only play videos that have been converted to a compatible video format.

Before watching videos on your player they must first be converted to a format that the player recognizes. This conversion can be done with Windows software that came with your player. Follow these steps to install the software:

1. Place the included CD into your computer's disc drive.
2. Click *Start > My Computer*, and then click the drive corresponding to your disc drive.
3. Double-click *Setup.exe* to perform the installation.
4. Complete the installation as directed by the installation wizard. If Windows asks whether to allow the installation, click *ALLOW*.
5. Follow the same steps to install the Arcsoft Mediaimpression Downloader (MIDownloader). **Note:** Each software must be installed separately.

3.2 Converting Video


To play videos on your player, you must:

- (a) Have some videos on your computer,
- (b) Convert them to a format supported by your player (if necessary)
- (c) Copy the video files to your player.

Note: You cannot convert copy-protected DVDs.

Follow these steps to convert video files:

1. If you wish to save converted videos directly to the player, first connect it to your computer with the USB cable.
2. Run the conversion software by clicking *Start > Programs > Multimedia Player Utilities > Video Converter*.
3. Choose a folder in which to save the converted files by clicking the red icon beside the *Output File* field. You can save the converted files directly to the player by selecting the player's *VIDEO* folder.
4. Build a list of videos to convert:
 - a) Click the green icon next to the *Input File* field.
 - b) Navigate to your media folder(s).

- c) Select one or more videos to convert (Note that the program will not convert from *any* video format). Once a video is selected, it will be added to a file list at the bottom of the window.
 - d) Repeat the *Add File* process until you have completed the list of videos you want to convert.
5. Click the *Begin* button () to start converting the list of videos. A message will appear indicating when the conversion process is finished.

Important: If the video conversion fails, download the free codec from this link:
http://www.free-codecs.com/download_soft.php?d=5884&s=775

Save the file and then follow the installation instructions. After installation is completed, open the E-matic Video Converter and try again.

3.3 Using Other Conversion Software

While the included software converts numerous formats to the format required by the player, there may be some that it cannot convert. Regardless of what conversion software you use, be sure to convert your video media to a supported format at a 320x240 resolution. (See “*Technical Specifications*” in this manual for a list of supported formats.)

3.4 Converting Video in Linux

While the player does not come with conversion software for Linux, there are several free, open source programs available in Linux that can do the necessary transcoding. The three most powerful command line encoders are *mencoder*, *ffmpeg*, and *transcode*. To make things easier, you can use one of the many available front-ends, although the simplest may be *avidemux* (pictured).



Regardless of the tool you use, transcode videos as follows:

- Use AVI as the file container.
- Encode video using the Xvid codec.
- Resize video to 320 x 240 pixels or smaller.
- Encode the audio using an MP3 codec.
- Reduce the audio to 2 channels if the original was more, such as 5.1.

There may be other transcoding “formulas” that will produce videos that are compatible with the player. Also note that there are some formats that will work

without conversion. For a full list of supported formats, see “*Technical Specifications*” in this manual.

Note: E-matic does not provide support to Linux users. However, you can get help from the Linux community on the Internet via information sites, forums, and e-mail lists.

4.0 Copying Files

4.1 Copying Media Files to your Player



WARNING: Make certain your media files are supported by the player. Media from iTunes is NOT supported.

To listen to and/or view media on your player, you must first copy whichever files you want to enjoy from your computer to the player. *However*, before copying the files, you must make certain that they are, in fact, supported by the player. See the full list of supported formats under “*Technical Specifications*” in this manual. Read about video conversion under “*Converting Video*” in this manual.

Follow these steps to copy media files to the player under **Windows**:

1. Switch the player on.
2. Connect the player to your computer with the USB cable.
3. Open a window to the player: Double-click *My Computer*, and then double-click the drive that corresponds to the player. It will probably be labeled *Removable Disk*.
4. Using the same process, open a window to your music, video, or other media files.
5. Drag-and-drop media files from your computer's window to the player's window. Media files must be copied to the correct folders:
 - ◆ Music files are copied to the *MUSIC* folder. You can use subfolders.
 - ◆ Video files are copied to the *VIDEO* folder.
 - ◆ Image files are copied to the *PICTURES* folder.
 - ◆ E-book files are copied to the *TXT* folder.
6. Disconnect the player from the computer using the safe removal method in “*Connecting and Disconnecting the Player to Your Computer*” in this manual.

Follow these steps to copy media files to the player under **OS X**:

1. Switch the player ON.
2. Connect the player to your computer with the USB cable.
3. Open a window to the player and double-click the *Removable Disk Drive* that appears on the Desktop. It will probably be labeled *No Name*.
4. Using the same process, open a finder window to your music, video, or other media files.
5. Drag-and-drop media files from your computer's window to the player's window. Media files must be copied to the correct folders:
 - Music files are copied to the *MUSIC* folder. You can use subfolders.
 - Video files are copied to the *VIDEO* folder.
 - Image files are copied to the *PICTURES* folder.
 - E-book files are copied to the *TXT* folder.
6. Disconnect the player from the computer by dragging the *Removable Disk* icon to the Trash/Eject icon in the dock.

4.2 Using Windows Media Player 11[®]'s Sync Function

If you sync your player with Windows Media Player, follow these steps when initially syncing the device:

1. Turn the player ON and use the USB cable to connect it to your computer.
2. Run Windows Media Player.
 - If this is the first time connecting the player to Windows Media Player, the program will ask you to name the device. Choose a name and click *Finish*.
 - If you want Windows to automatically sync your player:
 - a. Right click the *Sync* tab.
 - b. Highlight the player's name with the mouse cursor.
 - c. Click *SET UP SYNC* from the sub-menu that appears.
 - d. In the *Device Setup* window, click the box next to "*Sync this device automatically*".
 - e. Add or remove playlists you want to sync from the playlists to sync box.
 - f. Click *Finish*.

- If you want to manually sync the player:
 - a. Click the Sync tab.
 - b. Highlight the files you want transferred to your device.
 - c. Drag the files into the Sync List column
 - d. Click *Start Sync* to begin transferring the files to the player.
 - e. When the process is complete, you should be able to see the song files on the player through *My Computer*.

Note: See the full list of supported formats under “*Technical Specifications*” in this manual to determine which synced songs will be supported by the player.


5.0 Expanding the Player's Storage

5.1 Preparing a Micro TF Cards for Use

You can expand the player's capacity by adding a MicroTF card (also known as a TransFlash, or TF, card) with a capacity of up to 8GB. First, however, it must be prepared for use by the player. Follow these instructions to prepare the card:

1. Turn the player OFF.
2. Insert a micro TF card into the player.
3. Turn the player ON.
4. Tap *Setting* on the *Desktop*.
5. Tap *Other Settings* in the *Setting* menu.
6. Tap **twice** on *Format Card* in the next menu.
7. Tap *YES* on the window that pops up. This will create the necessary folders on your micro TF card.
8. Use the USB cable to connect the player to your computer.
9. Access your MicroTF card through *My Computer*.



You can access the files on your microTF card through most file lists by tapping the ‘previous directory’ arrow in the upper-left corner of the screen  until you see the directory ‘Card Memory.’ You can also access the files on your microTF card through *Explorer* mode, which is located on the *Desktop* (see section 7.3 for more information). When a MicroTF card is inserted, there will be a “Card Memory” directory in *Explorer* mode. Tap twice on this directory to see your files.

6.0 Using the ArcSoft MediaImpression Software

6.1 Using the MediaImpression Downloader

If you're using Windows, you can use the ArcSoft MediaImpression Downloader to download videos from YouTube and other websites that utilize Flash streaming video, and then view them on your player. Just follow the installation instructions in section 3.1 and the Downloader software will be installed along with the video converter. After the installation, use the following steps to download video from the internet and copy it onto your player:

1. Run the MediaImpression Downloader software by clicking *Start > Programs > ArcSoft Video Downloader > Video Downloader*.
2. At the bottom of the Downloader window, click the folder icon next to the words *Save to*:
3. Designate a location where you want your videos to be downloaded. If your player is connected to your computer, you can download videos directly to it by choosing the *Videos* folder within the player.
4. Using your favorite web browser, navigate to the video you want to download.
5. Place your mouse cursor over the video.
6. An icon should appear in the upper left corner of the pane that reads *ArcSoft Download*. Click this icon. Your video will begin downloading to the location you specified.
7. Once the file finishes downloading, you may copy it to your player by simply dragging and dropping it using the instructions under "*Copying Media Files to Your Player*" in this manual. The video will already be in the appropriate format (no need to convert).

For more information on using ArcSoft MediaImpression Downloader, please visit http://www.arcsoft.com/public/software_title.asp?ProductID=147

Part II: Player Operations

7.0 Basic Operations

7.1 Turning the Player On and Off



Pay special attention to whether these instructions indicate whether to press **or press and hold** a button!

- **On:** To turn the player **ON**:
 1. *Press and release* the ON/OFF button toward the ON/OFF position.
 2. *Press and hold* the player's CAMERA button until the E-matic logo is displayed.
- **Off:** To turn the player **OFF**:
 1. Place the ON/OFF button in the ON/OFF (unlock) position.
 2. *Press and hold* the player's CAMERA button until the "Goodbye" message is displayed.

By default, if the player is left idle for over three minutes it will automatically turn itself off. To select a different duration before the player turns off, or to set it so the player doesn't turn off automatically, please read "*System Settings*" in this manual.

Note: The unit will also turn itself off if the battery charge becomes too low.

7.2 The Lock Feature

The ON/OFF switch has two positions: ON/OFF and LOCKED.

- To manually lock the touch- screen and prevent inadvertent screen selections, place the ON/OFF switch in the LOCKED position.
- To unlock the touch-screen, place the ON/OFF switch in the ON/OFF position.

7.3 The Desktop

The player has many functions, or *modes*, such as playing music/movies and shooting photos or video. When the player is turned on it displays the **Desktop** (Main Menu), which can be used to enter any of these modes. Select a mode by tapping it with your finger (or the stylus). You can get back to the Desktop at any time by pressing the MENU/EXIT button or by tapping on the desktop icon in the lower-right corner of the screen.



From the Desktop, you can access files stored on an inserted microTF card by entering the *Explorer* mode.

8.0 Watching Videos

8.1 Accessing Video Mode



WARNING: This player will only play videos that have been converted to a compatible video format. See “Technical Specifications” in this manual for a list of supported formats. See “Video Conversion” in this manual for information on converting video to a compatible format.

Tap the *Video* icon on the Desktop to access video playback.

8.2 Video Menu

Scroll through the list of video files by tapping the arrows at either the top or bottom of the scroll bar.

To **highlight** a video, tap on it once.

To **watch** a video, tap twice on the file you want to view.

You can also **Delete** a video file from the Video Menu by highlighting it (tapping on it once), then tapping the delete icon at the bottom of the screen. A dialog box will appear, asking you to confirm the file’s removal.



You can access microTF card content by tapping the **Previous Directory** icon until you see the directory “Card Memory.”

To **Exit** to the Desktop from the Video Menu, tap the desktop icon or press the MENU/EXIT button.

8.3 Video Playback

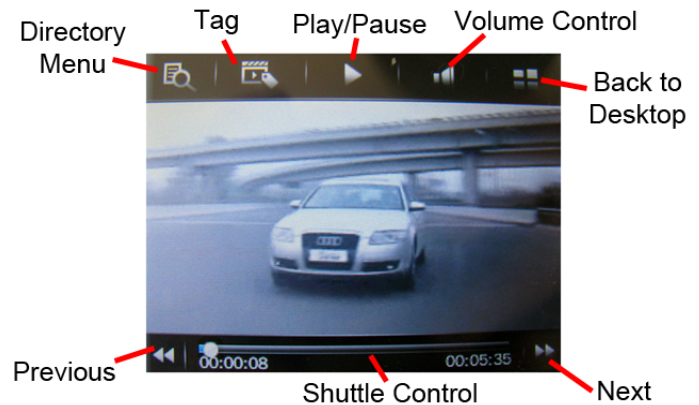
Once a file has been selected to play, the orientation of the screen will rotate and full-screen playback will begin. If the selected video has been viewed previously, a pop-up window asking “Continue last play?” will appear. Select yes if you want to continue from the last play position, or no if you want to start the video from the beginning.

At any time during video playback, you can tap the middle of the screen to view the following **Playback Controls**:

- Drag the **Shuttle Control** slider to change play position within a video.

- To change the volume:

1. Tap the **Volume Control** icon and the Shuttle Control will temporarily change to a volume slider.
2. Drag the volume slider left to lower the volume.
3. Drag the volume slider right to increase the volume.



- Tap the **Previous** arrow once to restart a video, twice to play the previous file in the playlist, or hold your finger (or the stylus) down on the **Previous** arrow to REWIND the video.
- Tap the **Next** arrow to play the next file in the file list, or hold your finger (or the stylus) down on the **Next** arrow to FAST FORWARD the video.
- Tap the **Play** icon once to pause, and a second time to resume play.
- Tap the **Tag** icon to save a tag/bookmark at the current play position.
- Tap the Directory Menu to:
 - Select **MainDir** to go back to the Video Menu
 - Select **CardDir** to browse videos stored on an inserted microTF card
 - Select **TagList** to view a list of tags you've set



- You can exit to the Desktop directly from video playback by tapping the **Desktop** icon, or by pressing the **EXIT** button.

9.0 Listening to Audio

9.1 Accessing Audio Mode

Tap the *Music* icon on the Desktop to access audio playback.

9.2 Audio Play Operations

At the Now Playing screen (see picture), use the stylus to select the following functions:

- Tap the **Play/Stop** icon once to pause and a second time to resume play.
- Tap the **Previous** arrow once to restart the song, twice to play the previous song in the playlist.
- *Press and hold* your finger (or the stylus) down on the **Previous** arrow to REWIND the song.
- Tap the **Next** arrow to play the next song in the playlist.
- *Press and hold* your finger (or the stylus) down on the Next arrow to Fast-Forward the song.
- Change the volume by dragging the **Volume Slider**.
- Drag the **Shuttle Control** to change position within a song.
- Tap **Playlist Control** to select playlist options such as play all, play once, single song repeat, and intro mode.
- The **Playlist Position** indicates which song in the playlist is currently playing, as well as the total number of songs in the playlist.
- **Shuffle** changes between sequential mode and shuffle (random) mode.
- Tap the **Browser** icon to access your music directories:
 - **Main Dir** accesses the music on the player's built-in flash memory.
 - **Card Dir** accesses the music on an inserted microTF card.
 - **All Music** displays all songs stored on the player, without subfolders.
 - **ID3 List** allows you to browse your music by Artist, Album, or Genre.
 - **Play List** accesses a list of your playlists.
 - **Tag List** displays a list of saved tags.



- Tap the **Setting** icon to access the following:
 - **SRS** allows you to select a virtual surround-sound option.
 - **USER EQ** lets you define your own equalizer settings.
 - **Add List** lets you save the current playlist.
 - **Add Tag** allows you to tag the play position within the current song.
- The **EQ** icon allows you to select one of many equalizer presets.
- The **Format** icon displays the BitRate and SampleRate of the file currently playing.
- You can exit to the Desktop directly from audio playback by tapping the **Desktop** icon, or by pressing the MENU/EXIT button.



10.0 Viewing Pictures

10.1 Entering Photos Mode

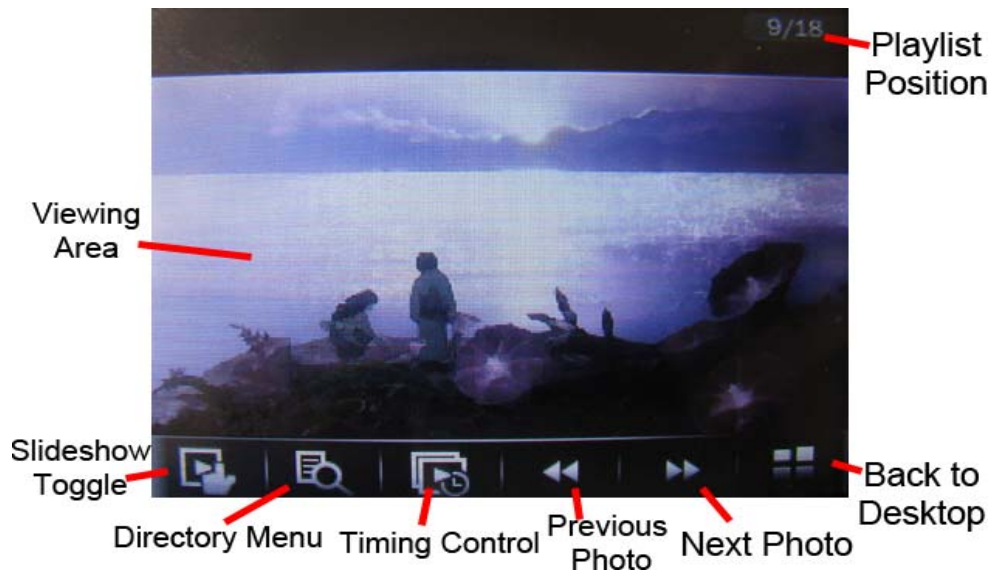
Tap the *Photo* icon on the Desktop to access picture viewing.

10.2 Picture Menu

- **Scroll** through the list of pictures by tapping the arrows at either the top or bottom of the scroll bar.
- To **highlight** a photo, tap on it once.
- To **view** a photo, tap twice on the file you want to view.
- You can also **delete** a picture from the file list by highlighting it (tapping on it once), then tapping the delete file icon. A dialog box will appear, confirming the file's **Removal**.
- You can access microTF card content by tapping the **Previous Directory** icon until you see the directory "Card Memory."
- To **Exit** to the Desktop tap the Desktop icon or press the MENU/EXIT button.



10.3 Picture Viewing



While viewing a picture, tap the middle of the screen once to display the following menu:

- Tap the **Slideshow** icon to start a slideshow.
- Tap the **Timing Control** to designate how long each photo will be displayed.
- Tap the **Playlist Control** to select whether the slideshow will stop at the end of the file list or loop indefinitely.
- Get back to the photo menu by tapping the **Directory Menu**.



You can exit to the desktop directly from audio playback by tapping the **Desktop** icon, or by pressing the MENU/EXIT button.

11.0 Shooting Photographs

11.1 Entering Camera Mode

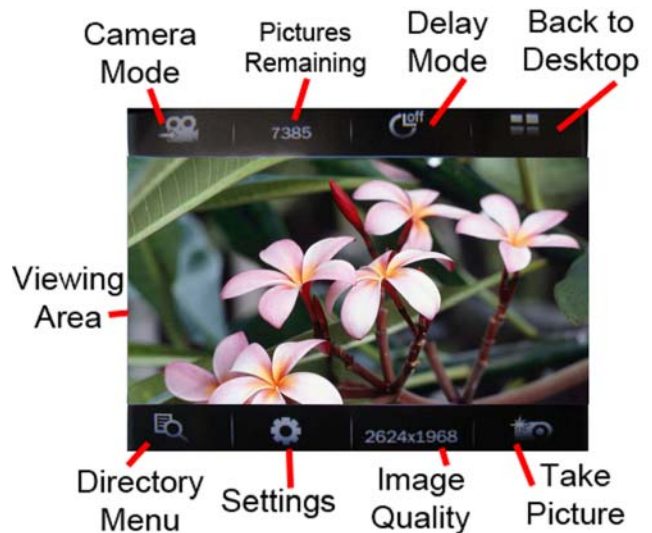
To shoot photos:

1. Tap the *Camera* icon on the desktop.
2. Tap **Capture** twice.

11.2 Basic Photo Shooting Operations

Use the **Viewing Area** as a Viewfinder.

- Snap a photo by pressing the CAMERA button, or by tapping the **Take Picture** icon on the screen.
- Tap **Directory Menu** to view the photos you've taken.
- Tap **Image Quality** to select the quality of photographs you want to take. Bigger numbers mean higher quality photos that take up more memory.
- **Photos remaining** is the number of photos you can take before memory is full. Choosing a different Image Quality will alter this number.
- **Timer** allows you to select the number of seconds between when the CAMERA button is pressed and when the player actually snaps a photo.
- The **Settings** menu lets you select special effects, change the directory in which photos are saved, alter the sound made when photos are taken, and choose whether or not you want a date stamp to appear on the photos you take.
- Tapping **Camera Mode** will switch the player to DV (digital video) recording mode.
- Press the MENU/EXIT button or tap the **Desktop** icon to return to the Desktop.



12.0 Recording Video

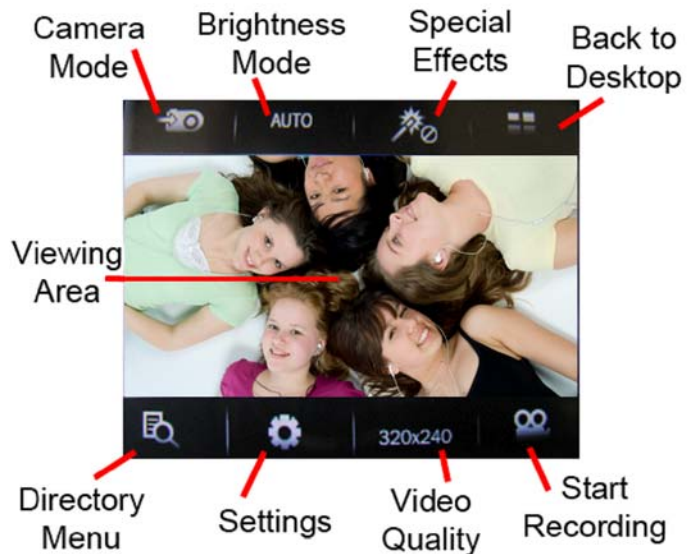
12.1 Entering DV (Digital Video) Mode

To record Video, tap the *Camera* icon on the Desktop then tap **Record** twice.

12.2 Basic Video Shooting Operations

To record video:

1. Use the **Viewing Area** as a Viewfinder.
2. Begin recording by tapping the **Start Recording** icon.
3. End a recording by tapping the Save File and Exit icon. (Your videos will be saved to the *VIDEO* folder.)



- **Brightness Mode** allows you to select brightness settings to compensate for certain lighting conditions.

- Tap **Special Effects** to record using various special effects such as Black & White, Negative, and Sepia.

- Tapping the **Directory Menu** lets you access a list of recordings you've made.

- **Settings** allows you to further tweak the brightness settings as well as change the directory in which files are saved.

- Tapping **Video Quality** lets you choose the recording quality of your videos. Bigger numbers indicate higher quality videos that take up more memory.

- **Camera Mode** lets you switch the player to photo capturing mode.



- Once you've finished a recording, you can return to the Desktop by pressing the MENU/EXIT button or by tapping the **Desktop** icon.

13.0 Recording Audio

13.1 Entering Recorder Mode

To enter *Voice Recorder* mode, tap *TOOLS* on the desktop, then tap *Recorder*.

13.2 Basic Recorder Operations

Tap **Start/Stop** to begin/end recording.

- **Time Left** indicates how much longer you can record (based on the amount of free space in the player's memory).
- When you are satisfied with a recording, tap **Save File** to save it to the player's memory.
- **Intro** allows you to access and review previous recordings.
- Tapping **Setting** will allow you to access the following options:
 - **Type** lets you chose between .wav and .mp3 file formats. .Wav is higher quality, but takes up substantially more memory than .mp3. .Mp3 has nearly the same quality as .wav, but takes up a fraction of the storage space.
 - **Qual** lets you choose the recording quality. The higher the quality, the more memory your recording will use.
 - **Volume** adjusts the recording volume.



- To return to the Desktop, tap the **Desktop** Icon or press the MENU/EXIT button.

14.0 E-Book Operations

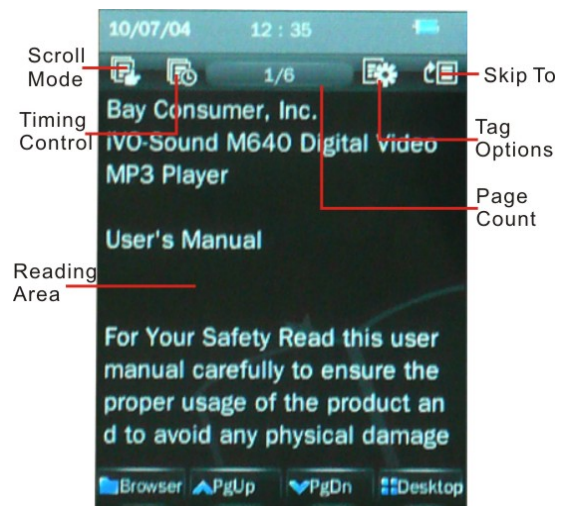
14.1 Entering E-Book Mode

Tap the *EBook* icon on the desktop to enter e-book mode.

14.2 Basic E-Book Operations

- Use the scroll bar to browse the list of texts.
- Double tap a file to view it.

- While viewing a text, a **Page Count** at the top of the display will indicate what page you're currently viewing, as well as the total number of pages in the text.



- Tap **Scroll Mode** to switch between manual and automatic scrolling modes.
- When manually scrolling (indicated by the finger icon), tap the **PgUp/PgDn** icons to scroll through the pages.
- In automatic scrolling mode (indicated by the play icon), the page will automatically turn based on the setting chosen in the **Timing Control**.
- Use **Tag Options** to bookmark and recall specific pages.
- **Skip To** lets you skip to a different part of the e-book you're currently reading.
- Tap **Browser** to go back to the e-book file menu.
- To return to the Desktop, tap the Desktop Icon or press the MENU/EXIT button.



15.0 Listening to the FM Radio

15.1 Entering Radio Mode



WARNING: The headphones function as an antenna. Therefore, the FM radio will only work with the headphones connected to the player.

Tap the *Radio* icon on the desktop to enter FM radio mode.

15.2 Basic Radio Operations

- Manually select a channel by tapping **Manual Mode**.
- Use the **Arrow/Seek** icons to tune to a specific frequency.
- Save channels by tapping the **Save Channel** icon.
- Tap **Auto-Seek** and the player will automatically scan all available frequencies and save any channels it finds. Access these channels in the **Channel List**.



- Delete channels from the player's memory by tuning to them and tapping the **Delete Channel** icon.
- Mute the radio at any time by tapping the **Play/Pause** icon.
- The volume can be changed by dragging the **Volume Slider**.
- Tap **Setting** to change the radio scheme when visiting different international locations (USA, Europe, Japan, and China)
- Tapping **Recorder** allows you to record live radio. See the Recorder section for more details.



- To return to the Desktop, tap the **Desktop** Icon or press the MENU/EXIT button.

16.0 Web Camera

16.1 Using the player as a Web Camera

To use your player as a Webcam:

1. Connect the player to your computer with the USB cable.
2. When the USB connection screen appears on the player, press the MENU/EXIT button twice to access the Desktop.
3. Tap the *Camera* mode on the player's Desktop, then tap *Web Camera* twice.



In Windows, the camera should now appear in *My Computer* as *USB Video Device*, after which it can be used with any webcam-capable programs.

17.0 Tools

17.1 Entering TOOLS Mode

Select the *TOOLS* Mode from the Desktop to access the following menu of applications:

- **Recorder** allows you to record voice notes and memos using the player's built-in microphone. See "*Recording Audio*" in this manual for more information.
- **Calendar** lets you view a monthly calendar.
- **Stopwatch** can be used to record up to five lap times.
- **Calculator** provides all the functionality of a basic calculator.
- **Notebook** allows you to write and save notes.
- **Mine** a touch-screen minesweeper game.

18.0 System Settings

18.1 Entering Settings Mode

Tap the *System Settings* icon on the Desktop to access the player's settings Mode.

18.2 Basic Settings Operations

The following options are available in the *System Settings* menu:

- **Player Information** displays technical information about the player.
- **Set Time** allows you to adjust the date and time on the player.
- **Language** allows you to change the display language. Supported languages are listed under "*Technical Specifications*" in this manual.
- **Display** allows you to select the *Backlight Time*, which determines how long the screen will stay backlit before the display turns off, and the *Brightness*, which can be turned down to save battery life. Note that when the backlight turns off, the device is still on, but the screen turns off to save battery power.
- **Calibrate** allows you to recalibrate the touch screen precision with the stylus.
- **Pow Off Time** allows you to set the length of inactivity before the player turns itself off.
- **Default Setting** restores the player to factory settings.
- **Upgrade** can be used to upgrade the player's firmware (should firmware updates become available).
- **Other Settings** contains the following options:
 - **Format Device** formats (deletes all memory on) the player's internal memory, creating the necessary subfolders.
 - **TVOUT** turns the TV-OUT function ON or OFF. See "*TV OUT*" in this manual for more information.

Miscellaneous

19.0 Formatting the Player

19.1 Understanding File systems

Your player is like a small hard drive of data, and like any such storage device, it has a *file system*. If you wish to reformat the player's file system, you may use any standard formatting tools as long as it is formatted with **FAT32 file system**.

19.2 Reformatting Your Player in Windows

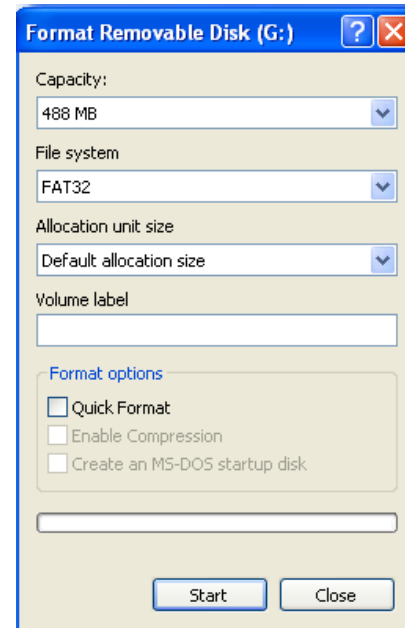
Follow these steps to reformat your player:

1. Connect the player to your computer via the USB cable.
2. Double-click *My Computer*.
3. Find the icon representing the player, which will probably appear as *Removable Disk*.
4. Right-click the player's icon and select *Format*.



WARNING: Make certain the **file system is FAT32**; otherwise the player will not work!

5. Click *Start*.
6. When the Warning message appears, click *OK*. **Once started DO NOT remove the USB cable as this may damage the player!**
7. Once the formatting is complete, you may access the drive through *My Computer*.



20.0 TV OUT

You can connect your player to your TV and use it to watch movies, view photos, or listen to music.

To connect your player to your TV:

1. Navigate to *Settings > Other Settings* on the player.
2. Set the TVOUT setting to 'ON' (from this menu, you can also select between PAL and NTSC formats, in the USA, this should be NTSC).
3. Connect the small end of the included RCA cables to the TV-OUT port on your player.
4. Connect the large end of the cables to your television.
5. When you play media on the device it will stream to the television.

Note: You must turn 'OFF' the TVOUT Setting in order to watch videos on the device again.

21.0 Help


21.1 For More Help

- See the FAQ page on our website for information and how-to videos: <http://www.ematic.us>
- Check the Updates section of our website.
- View how-to videos on our website.
- E-mail customer service: customerservice@ematic.us
You can expect a response within 1-2 business days.

21.2 Troubleshooting

Problem	Possible Reason	Solution
Unit will not turn on	Weak battery	Recharge the battery for 4 hours
	Invalid operation	Switch player off and then on again
Unit spontaneously turns off	Weak battery	Recharge the battery for 4 hours
Player connected by USB, but computer does not recognize the device	USB cable damaged	Replace with a new cable
	USB is disabled in the BIOS	Enable USB functionality in the BIOS
	OS does not support USB	Install or update the OS driver
	Wire wrongly connected	Make sure the cable is firmly connected
	Any issues of the PC	Reboot PC
No sound when playing media	Volume is too low	Turn up the volume
	Wrong audio out device	Set right parameter
	Unsupported file format	Re-encode media in a supported format
	The file is corrupted	Re-copy the file to the player. You may have to re-encode the file
	Damaged earphones	Use different earphones
	Format failure	Format with a FAT32 file system
Videos won't display on the screen	Improper TV-OUT configuration	Turn OFF the TVOUT Setting in order to watch videos on the device
Doesn't save: "Save Failure"	Storage full	Delete some files from the player
	Wrong save path	Double-check the destination folder
Wrong language	Wrong language is configured	Change the language in Settings
Songs on player are not in playable list	Songs in the wrong folder	Move all song files to the player's MUSIC folder, or one of its subfolders

22.0 Technical Specifications

Dimensions	105mm x 62mm x 12.5mm (length x width x thickness)	
Display	Physical dimensions	3" LCD QVGA touch screen
	Resolution	320x240 pixels
USB	USB 2.0	
Memory	Internal file system	FAT32
	Expansion capacity	1GB / 2GB / 4GB /8GB(optional)
Record	Format	WAV/MP3
	Length	70 Hours (128MB)
MP3 and WMA	Compress rate	32Kbps – 384Kbps
	Frequency response	20Hz – 20KHz
	Total harmonic distortion	<0.1%
	Signal-to-noise ratio	>85dB
	Audio Power	8mW – 16mW
CMOS Camera	Frame rate	30fps
	Color depth	24bit
	Focus	1x to 2x
Supported formats  WE AT EMATIC ARE CONSTANTLY STRIVING TO IMPROVE OUR PRODUCTS. PLEASE VISIT US ON THE WEB AT http://www.ematic.us FOR UPDATES ON SUPPORTED FORMATS	Images	JPG, PNG, GIF, BMP, TIFF images that are uncompressed, TIFF images that are compressed via Pack Bits, CCITT Group 3 fax images, and CCITT Group 4 fax images
	Videos	RM, RMVB, AVI, WMV, MP4, and FLV videos that have a resolution of 320x240 or smaller.
	Audio	MP3, WAV, and unprotected WMA, OGG, FLAC, and APE. Protected WMA audio files, and M4A/M4P files (any AAC-encoded audio) from iTunes® are not supported.
	E-book	TXT
Operating temperature	-5°C to 40°C	
Menu language	English, Simplified Chinese, Tradition Chinese, Japanese, Korean, French, German, Spanish, Portuguese, Dutch, Italian.	

23.0 Limitation of Liability Statement

23.1 Links to Third Party Sites

The Ematic User Manual may contain links to third-party sites, however, please be aware that Ematic is not responsible for and cannot control these other sites. Ematic makes no representations whatsoever about any other website which you may access through this user manual. When you access a non-Ematic web site, even one that may contain the Ematic logo, please understand that it is independent from Ematic, and that Ematic may have no control over the content on that website. In addition, a link to a non-Ematic website does not mean Ematic endorses or accepts any responsibility for the content, or the use, of such website. It is up to you to take precautions to ensure that whatever you select for your use is free of such items as viruses, worms, trojan horses and other items of a destructive nature.

23.2 Limitation of Liability

To the maximum extent permitted by applicable law, Ematic shall not be liable for any damages suffered as a result of using, modifying, contributing, copying, distributing, or downloading the materials. In no event shall Ematic be liable for any indirect, extraordinary, exemplary, punitive, special, incidental, or consequential damages (including loss of data, revenue, profits, use or other economic advantage) however arising, whether for breach or in tort, even if Ematic has been previously advised of the possibility of such damage. You agree that you have sole responsibility for adequate protection and backup of data and/or equipment used in connection with the product and software and will not make a claim of any nature against Ematic for lost data, inaccurate output, work delays or lost profits resulting from the use of the materials. You agree to hold Ematic entirely harmless from and you covenant not to sue Ematic, or its affiliates, successors or assigns, for any claims related to Ematic. Some states do not allow the exclusion or limitation of incidental or consequential damages, so the above limitation or exclusion may not apply to you.