

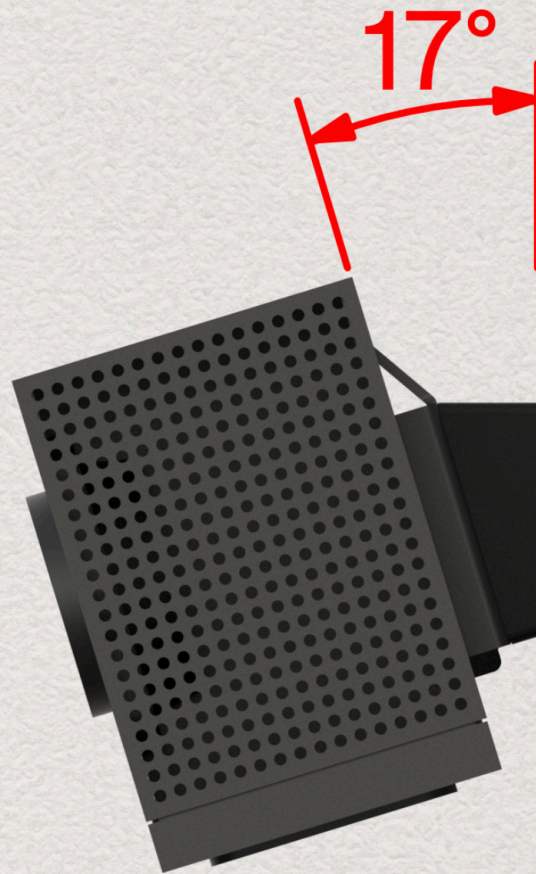
Heckler

# Heads Up

Heckler Angle Adapter for Huddly C1  
H596







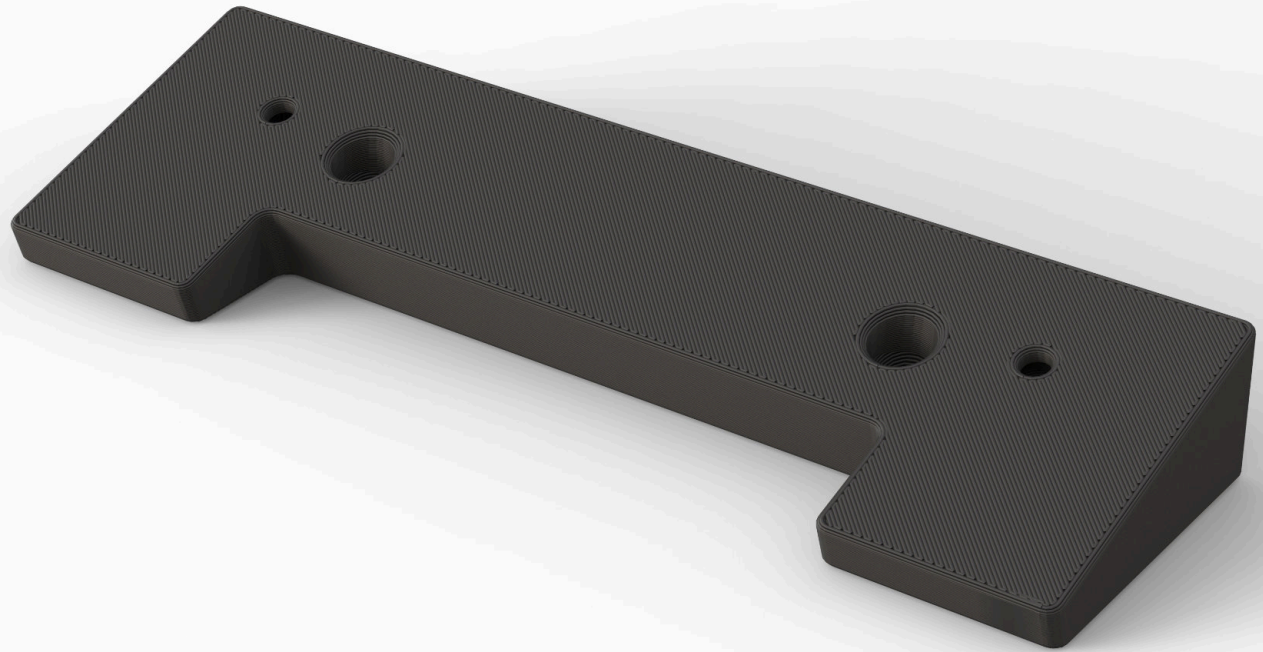
17°



# Heckler

When mounting Huddly C1 above a display, achieving the correct downward viewing angle is critical for natural eye contact and optimal framing. The Angle Adapter for Huddly C1 is a precisely formed, wedge-shaped spacer that installs between the Huddly C1 mounting bracket and your mounting surface to introduce a clean, intentional downward tilt—no shims, guesswork, or improvised solutions required.

Designed to integrate seamlessly with Heckler mounting solutions and architectural installations, this adapter is ideal for wall mounts, Heckler Framework, Heckler Credenza Neo, and Heckler Mobile Fleet deployments where the camera sits above the display plane.



# Heckler

## In the box

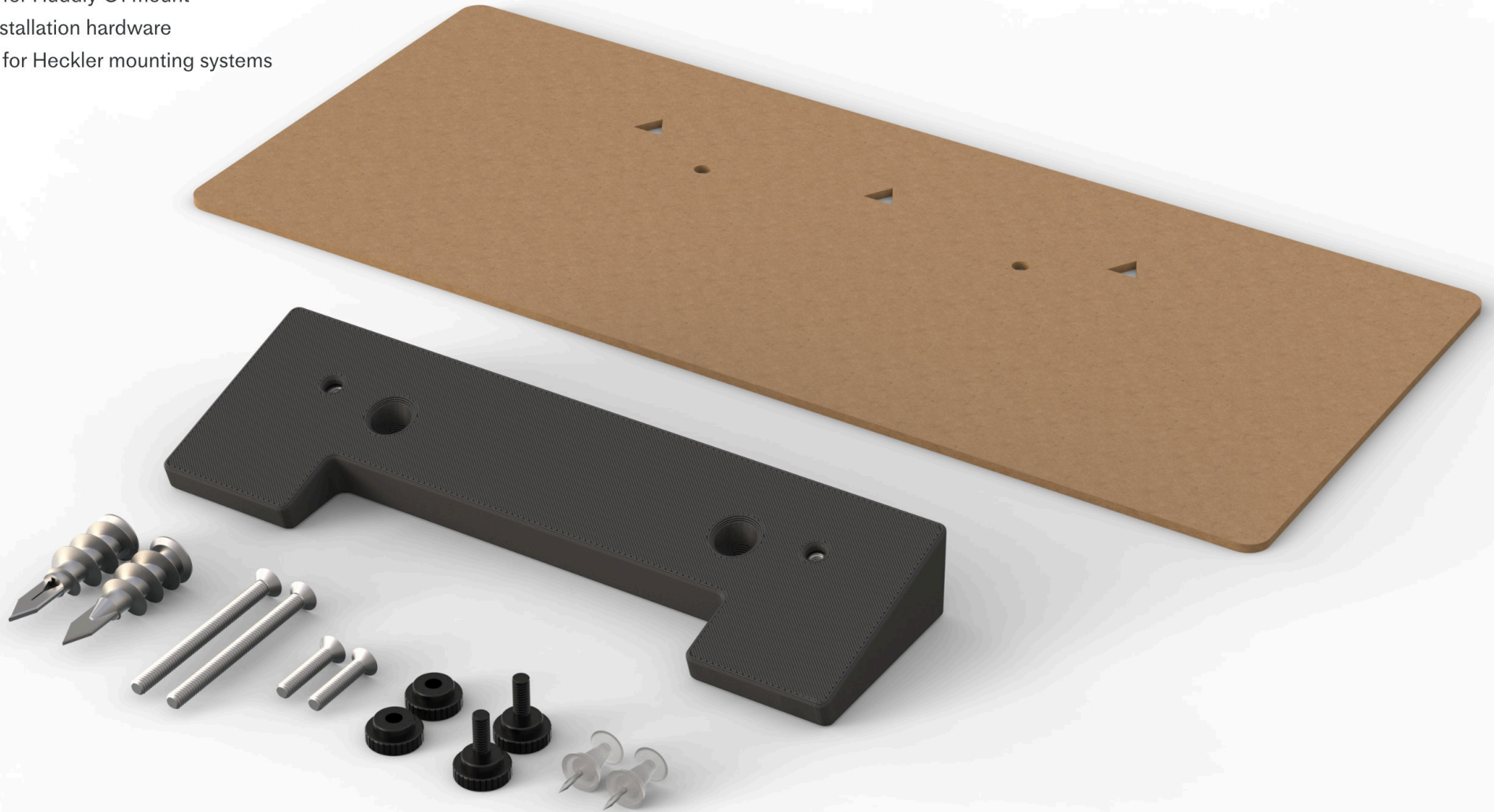
Angle Adapter

Wall mount template

Fasteners for Huddly C1 mount

Drywall installation hardware

Fasteners for Heckler mounting systems



# Heckler

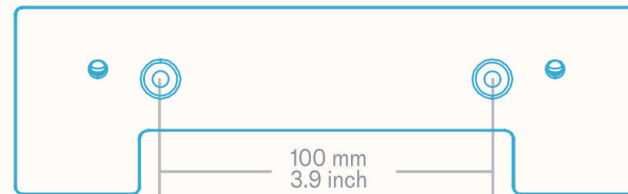
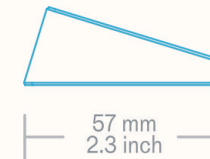
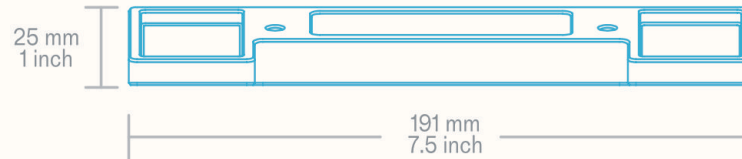
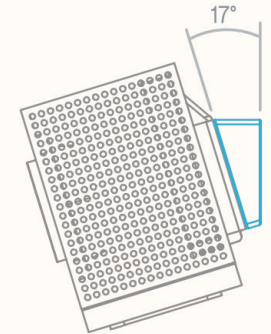
## Specifications

SKU	H596
Color	Black
Warranty	2 years
Product Dimension	7.5 x 2.3 x 1 inches (191 x 57 x 25mm)
Product Weight	0.5 lbs (0.23 kg)
Shipping Dimension	8 x 3 x 2 inches (203 x 76 x 51 mm)
Shipping Weight	1 lbs (0.46 kg)

Material ASA plastic

Country of Origin US

In the box  
Angle Adapter  
Wall mount template  
Fasteners for Huddly C1 mount  
Drywall installation hardware  
Fasteners for Heckler mounting systems



For more information, contact  
Heckler or your favorite Heckler  
Authorized Dealer.

heckler.com  
sales@hecklerdesign.com  
(844) 432-5930