

POWERSCAN™ 9600 DPX

Pioneering Industrial Handheld Scanner for Direct Part Marking Traceability

ULTRA-RUGGED WITH NEW BALANCED ERGONOMICS!

The PowerScan family of bar code readers is the ultimate industrial handheld scanner designed and constructed to withstand the toughest environmental conditions. The PowerScan 9600 imagers have an ultrarugged design, an ergonomic shape with well-balanced weight to reduce operator stress during daily activities.

DPM TECHNOLOGY

The PowerScan 9600 DPX series addresses Direct Part Marking (DPM) applications where codes are directly marked on the items for traceability with different marking technologies such as laser etching, dot peening, inkjet printing and electrochemical etching. The Datalogic patented 4D learning system automatically sets up the best acquisition parameters and decoding algorithms, without the need to configure the scanner for every different application.

WIRELESS CHARGING

The PowerScan 9600 DPX scanner features Datalogic's Wireless Charging system. Based on inductive-charging technology, Datalogic's Wireless Charging System eliminates battery contacts and pins that often get dirty, bent, or broken over time – and this removes a key point of failure for devices used in industrial and retail functions.

MOBILITY ENHANCES PRODUCTIVITY

The PowerScan 9600 DPX cordless model further enhances the operator efficiency and safety with Bluetooth 5.0 or Datalogic's STAR Cordless System™. The base/charger has a modular design and is available with multiple interface plug-ins for standard and industrial communication, such as RS-232, USB, Standard Ethernet, and Industrial protocols.



FEATURES

- Available in corded, cordless Bluetooth, and cordless STAR with display option models
- Omnidirectional reading on 1D, stacked and 2D codes
- DPM and label printed codes
- Water and Particulate Sealing Rating: IP65 and IP67; 10 million hits trigger
- Center of gravity design
- Modular cradle design allowing interface expansion
- Dedicated illumination for DPM codes and autofocus system
- Datalogic's 3GL™ (3 Green Lights) technology and loud beeper for good-read feedback
- Wireless Charging reducing total cost of ownership
- EASEOFCARE Service Plans offer a wide range of service options to protect your investment, ensuring maximum productivity and ROI

INDUSTRIES - APPLICATIONS

- **Manufacturing Shop Floor:**
 - Work-in-Progress
 - Sub-Assembly
 - Component Tracking
 - Quality Control
 - Line Inventory Control

POWERSCAN 9600 DPX

TECHNICAL SPECIFICATIONS

CORDLESS COMMUNICATIONS

PM9600 DPX	Datalogic STAR Cordless System Radio Frequency: 433 MHz; Effective Radiated Power: 433 MHz: < 10 mW; Point-to-Point/Multi-Point Configuration; Max. Readers per Radio Receiver: 16; Two Way Communications; Radio Range (Open Air): 433 MHz: 150 m / 492 ft low speed; 100 m / 328 ft high speed
PBT9600 DPX	Bluetooth Wireless Technology Radio Frequency: 2.4 GHz; Profiles: SPP (Serial Port Profile) and HID (Human Interface Device); Protocol: Bluetooth 5.0 Certified; Class 1, Class 2 and Class 3; Radio Range (Open Air): 100.0 m / 328.0 ft; Range distances are measured using the base station; Range with connection to other Bluetooth peripherals may show different results. Security: Data Encryption; Scanner Authentication

DECODING CAPABILITY

1D / Linear Codes	Auto discriminates all standard 1D codes including GS1 DataBar™ linear codes.
2D Codes	Aztec Code; China Han Xin Code; Data Matrix; MaxiCode; Micro QR Code; QR Code; Dot code
Postal Codes	Australian Post; China Post; IMB; Japanese Post; KIX Post; Planet Code; Portuguese Post; Postnet; Royal Mail Code (RM4SCC); Swedish Post
Stacked Codes	EAN/JAN Composites; GS1 DataBar Composites; GS1 DataBar Expanded Stacked; GS1 DataBar Stacked; GS1 DataBar Stacked Omnidirectional; MacroPDF; MicroPDF417; PDF417; UPC A/E Composites

ELECTRICAL

Current	PD9630-DPX: Operating (Typical): 470mA @ 5V / 190 mA @ 12V Standby/Idle (Typical): 89 mA @ 5V / 41 mA @ 12V PM/PBT9600-DPX: Operating: 552 mA @ 4.1V Charging (Typical) < 15 W; Cradle BC96xx only: 150 mA @ 5 V
Battery	Lithium-Ion: 3350 mAh Charge Time @ 12 VDC: 2.5 hours to charge up to 95%, 3.2 hours to charge 100%, External Power Reads per Charge: 80,000+
Input Voltage	Corded models: 5 - 30 VDC ± 5% Cordless models: Host powered: 5V DC ± 5% or 10 - 30 VDC External power supply: 10 - 30 VDC ± 5%

ENVIRONMENTAL

Ambient Light	0 - 100,000 lux
Drop Resistance	Withstands 50 drops from 2.5 m / 8.2 ft @ 20 °C / 68 °F; Withstands 50 drops from 2.0 m / 6.6 ft @ -20 °C / -4 °F
Trigger Resistance	Withstands 10 million hits
ESD Protection (Air Discharge)	20 kV
Humidity (Non-Condensing)	0 - 95%
Particulate and Water Sealing	IP67 and IP65; Cradle IP65 (specific models)
Temperature	Operating: -20 to 50 °C / -4 to 122 °F Storage/Transport: -40 to 70 °C / -40 to 158 °F Charging: 0 to 40 °C / 32 to 104 °F nominal, 0 to 35 °C / 32 to 95 °F ideal

INTERFACES

Interfaces	RS-232 / USB / Ethernet and Industrial Protocols
-------------------	--

PHYSICAL CHARACTERISTICS

Colors Available	Black
Dimensions H x L x W	Corded models: 19.0 x 14.0 x 7.9 cm / 7.5 x 5.5 x 3.1 in Cordless models: 19.7 x 14.9 x 7.9 cm / 7.8 x 5.9 x 3.1 in
Display	PM9600-DDPX: 1.8" OLED graphic display; Font Dimensions: User selectable
Keypad	PM9600-DDPX 4 Keys; Configurable
Weight	PD9630-DPX: 316.2 g / 11.15 oz PBT9600-DPX: 434.6 g / 15.33 oz PM9600-DDPX: 462.5 g / 16.32 oz

READING PERFORMANCE

Imager Sensor	1280 x 800 pixels
Light Source	Aiming: 650 nm VLD Illumination: White, Red and Blue LED
Print Contrast Ratio (Minimum)	15%
Reading Angle	Pitch: +/- 52°; Roll (Tilt): 360°; Skew (Yaw): +/- 52°
Reading Indicators	Beeper (Adjustable Tone and Volume); Datalogic's 3GL™ (Three Green Lights) technology for good-read feedback; Green Spot on the Code; Dual Good-Read LEDs; Vibration
Resolution (Maximum)	1D Codes: 2 mil; 2D Codes: 4 mil

READING RANGES

Typical Depth of Field	Minimum distance determined by symbol length and scan angle. Printing resolution, contrast, and ambient light dependent.
-------------------------------	--

Code 128 2.5 mils: 2.5 to 9.8 cm / 1.0 to 3.9 in
Code 128 5 mils: 2.5 to 16.9 cm / 1.0 to 6.7 in
EAN/UPC 13mils: 2.5 to 22.5 cm / 1.0 to 8.9 in
DataMatrix 5 mils: 2.0 to 10.0 cm / 0.8 to 3.9 in
DataMatrix 10 mils: 2.0 to 16.2 cm / 0.8 to 6.4 in

SAFETY & REGULATORY

Agency Approvals	The product meets necessary safety and regulatory approvals for its intended use. The Quick Reference Guide for this product can be referred to for a complete list of certifications.
Environmental Compliance	Complies to China RoHS; Complies to EU RoHS; Complies to R.E.A.C.H.
Laser Classification	Caution Laser Radiation - Do not stare into beam; CDRH Class II; IEC 60825 Class 2
LED Classification	IEC 62471 Class 1 LED

UTILITIES

Datalogic Aladdin™	Datalogic Aladdin configuration program is available for download at no charge.
OPOS / JavaPOS	OPOS and JavaPOS Utilities are available for download at no charge.

WARRANTY

Warranty	3-Year Factory Warranty
-----------------	-------------------------

ACCESSORIES

Base Stations / Chargers



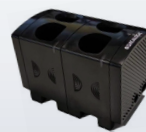
BC9620 Base station/charger USB only
BC9630 Base station/charger Multi-Interface
BC9631 Base station/charger Multi-Interface, IP65
BC9680 Base station/charger Ethernet/Profinet
BC9681 Base station/charger Ethernet/Profinet/ETH IP, IP65

Battery



RBP-PM96 Removable battery

Multi-Battery Charger



MC-P096-M2 Multi Battery Charger 2 slots
MC-P096-M4 Multi Battery Charger 4 slots
MC-P096-E2 Extension modules, 2 slots

Holders



HLD-P096 Holder