

Product data sheet

Specifications



Appliance, EcoStruxure IT Data Center Expert, enterprise, up to 4025 devices, up to 250 surveillance cameras, remote monitoring, management

AP9475

Overview

Presentation	StruxureWare Data Center Expert Enterprise scales up to 4025 devices and 250 surveillance cameras.
Lead time	Usually Ships within 2 Weeks

Main

Number of rack unit	2U
Number of cables	2
Communication Port Protocol	DNS HTTP HTTPS SMTP SMS SNMP SSL TCP/IP
Provided Equipment	1 Node Surveillance License Key 25-Node license key CD with software Server appliance User Manual Installation guide

General

Operating System	Windows 7 Windows 8 Windows Vista Windows XP Windows XP Professional SP1 Windows XP Professional SP2
Memory capacity	4GB/5 x 300GB RAID-5 available for data storage

Physical

Color	Silver
Height	3.5 in (8.9 cm)
Width	19.02 in (48.3 cm)
Depth	19.02 in (48.3 cm)
Net Weight	55.1 lb(US) (25 kg)
Mounting Location	Front
Mounting preference	No preference
Mounting Mode	Rack-mounted

Price is "List Price" and may be subject to a trade discount – check with your local distributor or retailer for actual price.

Environmental

Ambient Air Temperature for Operation	50...95 °F (10...35 °C)
Operating altitude	0...10000 ft
Relative Humidity	5...90 %
Ambient Air Temperature for Storage	-40...158 °F (-40...70 °C)
Storage altitude	0...30000 ft (0...9144 m)
Storage Relative Humidity	5...95 %

Communications & Management

Communication Network Type	RJ-45 10/100 Base-T USB
----------------------------	----------------------------

Ordering and shipping details

GTIN	731304246039
------	--------------

Packing Units

Unit Type of Package 1	PCE
Nbr. of units in pkg.	1
Package 1 Height	15.0 in (38.1 cm)
Package 1 Width	36.0 in (91.4 cm)
Package 1 Length	24.8 in (62.9 cm)
Package weight(Lbs)	87.19 lb(US) (39.55 kg)

Contractual warranty

Warranty (in months)	24
----------------------	----



Environmental Data

Schneider Electric aims to achieve Net Zero status by 2050 through supply chain partnerships, lower impact materials, and circularity via our ongoing “Use Better, Use Longer, Use Again” campaign to extend product lifetimes and recyclability.

[Environmental Data explained >](#)

[How we assess product sustainability >](#)



Environmental footprint

Total lifecycle Carbon footprint	9 931 kg CO2 eq.
Carbon footprint of the manufacturing phase [A1 to A3]	685 kg CO2 eq.
Carbon footprint of the distribution phase [A4]	5 kg CO2 eq.
Carbon footprint of the installation phase [A5]	0 kg CO2 eq.
Carbon footprint of the use phase [B2, B3, B4, B6]	9 540 kg CO2 eq.
Carbon footprint of the end-of-life phase [C1 to C4]	4 kg CO2 eq.
Environmental Disclosure	Product Environmental Profile

Use Better



Materials and Substances

Packaging made with recycled cardboard	No
Packaging without single use plastic	No
EU RoHS Directive	Compliant By Exemption
REACH Regulation	Reference contains Substances of Very High Concern above the threshold

Use Longer



Lifetime extension

Repair	No
--------	----

Use Again



Repack and remanufacture

Recyclability potential, in %	95
Circularity Profile	End of Life Information
Take-back	Nej

Offer Marketing Illustration

Product benefits / Features

EcoStruxure IT Data Center Expert

Benefits



Complete Infrastructure Visibility

Deploy faster with automatic updates and centralized monitoring, reducing manual work and operational overhead.



Prevent Costly Downtime

Get proactive alerts and correlated insights to resolve infrastructure issues before they impact operations.



Scale Without Limits

Adapt as your data center evolves without losing visibility, control, or compatibility across your infrastructure.

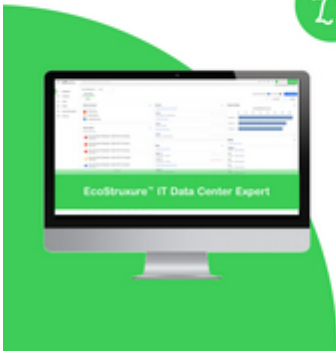
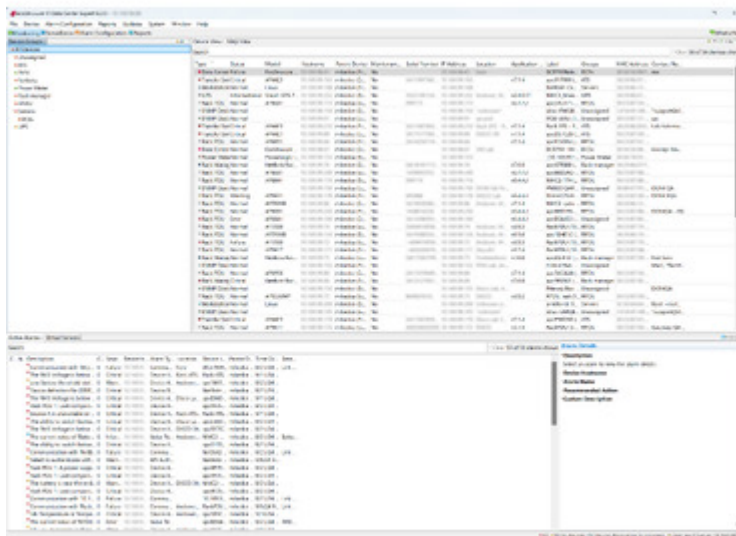
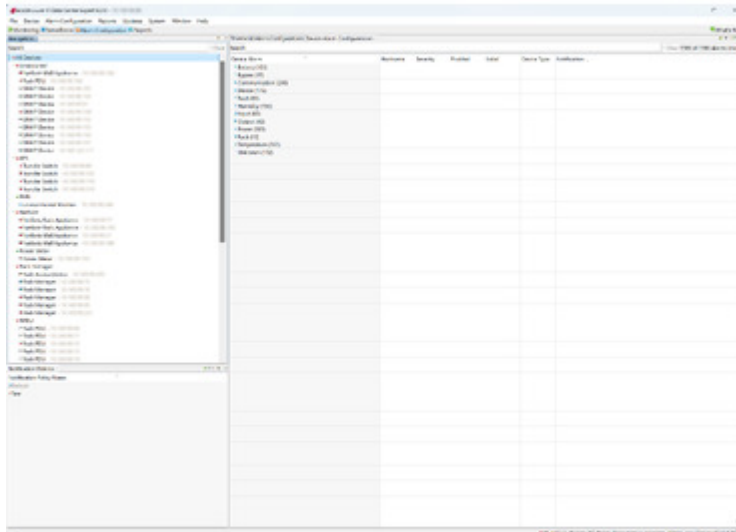
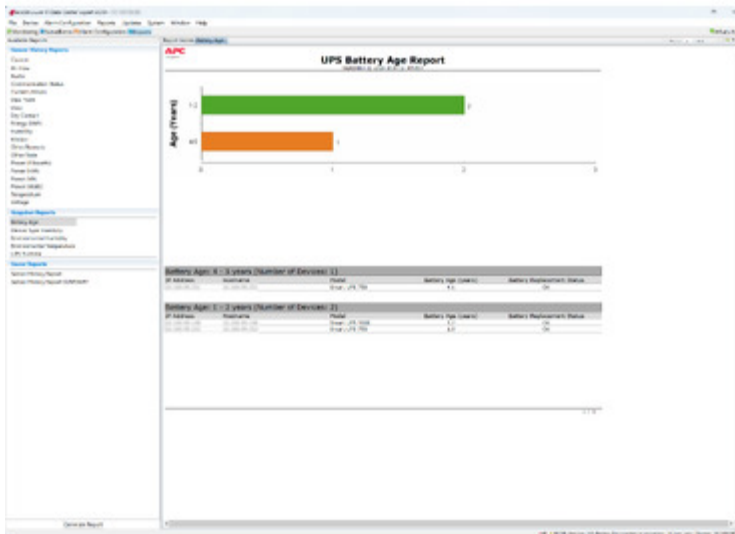
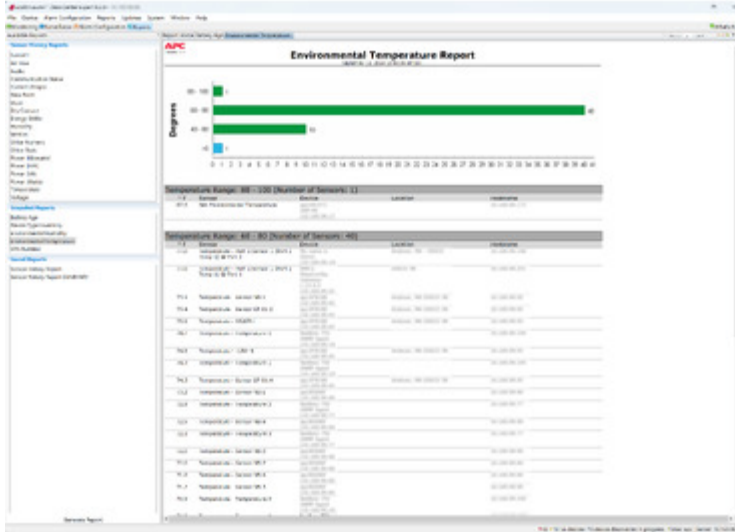
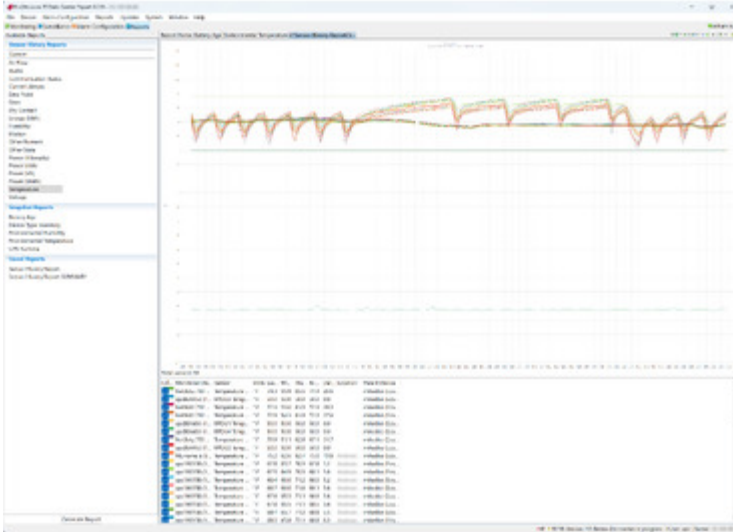


Image of product / Alternate images

Alternative







The figure shows a software interface with a configuration table and a dialog box. The table has the following columns: Name, Description, Severity, Enabled, Label, and Notification Policy. The dialog box is titled 'Device Configuration' and contains various settings.

Name	Description	Severity	Enabled	Label	Notification Policy
Advanced Battery Management for Station 1		Warning	Yes	AP9475-10-000	Default
Advanced Battery Management for Station 2		Warning	Yes	AP9475-10-000	Default
Advanced Battery Management for Station 3		Warning	Yes	AP9475-10-000	Default
Advanced Battery Management for Station 4		Warning	Yes	AP9475-10-000	Default
Advanced Battery Management for Station 5		Warning	Yes	AP9475-10-000	Default
Advanced Battery Management for Station 6		Warning	Yes	AP9475-10-000	Default
Advanced Battery Management for Station 7		Warning	Yes	AP9475-10-000	Default
Advanced Battery Management for Station 8		Warning	Yes	AP9475-10-000	Default
Advanced Battery Management for Station 9		Warning	Yes	AP9475-10-000	Default
Advanced Battery Management for Station 10		Warning	Yes	AP9475-10-000	Default
Advanced Battery Management for Station 11		Warning	Yes	AP9475-10-000	Default
Advanced Battery Management for Station 12		Warning	Yes	AP9475-10-000	Default
Advanced Battery Management for Station 13		Warning	Yes	AP9475-10-000	Default
Advanced Battery Management for Station 14		Warning	Yes	AP9475-10-000	Default
Advanced Battery Management for Station 15		Warning	Yes	AP9475-10-000	Default
Advanced Battery Management for Station 16		Warning	Yes	AP9475-10-000	Default
Advanced Battery Management for Station 17		Warning	Yes	AP9475-10-000	Default
Advanced Battery Management for Station 18		Warning	Yes	AP9475-10-000	Default
Advanced Battery Management for Station 19		Warning	Yes	AP9475-10-000	Default
Advanced Battery Management for Station 20		Warning	Yes	AP9475-10-000	Default

