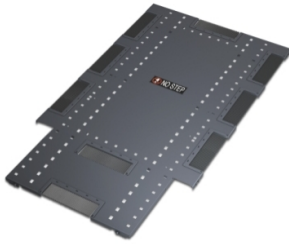


# Product data sheet

Specifications



## NetShelter SX 600mm Wide x 1200mm Deep Roof Black

AR7211

### Overview

**Presentation** NetShelter SX roofs feature superior cable access and flexibility with toolless installation and reversibility.

**Lead time** Usually in Stock

### Main

**Provided equipment** Grommets  
Installation guide

### Physical

**Color** Black

**Height** 0.6 in (16 mm)

**Width** 22.6 in (575 mm)

**Depth** 35.7 in (908 mm)

**Net Weight** 8.02 lb(US) (3.64 kg)

**Mounting preference** No preference

**Mounting Mode** Not rack-mountable

**Marking** 18 gauge roof

### Ordering and shipping details

**GTIN** 731304249269

### Packing Units

**Unit Type of Package 1** PCE

**Nbr. of units in pkg.** 1

**Package 1 Height** 4.02 in (10.2 cm)

**Package 1 Width** 40.0 in (101.6 cm)

**Package 1 Length** 26.0 in (66 cm)

**Package weight(Lbs)** 14.02 lb(US) (6.36 kg)

### Contractual warranty

**Warranty (in months)** 24

Price is "List Price" and may be subject to a trade discount – check with your local distributor or retailer for actual price.



## Environmental Data

Schneider Electric aims to achieve Net Zero status by 2050 through supply chain partnerships, lower impact materials, and circularity via our ongoing “Use Better, Use Longer, Use Again” campaign to extend product lifetimes and recyclability.

[Environmental Data explained >](#)

[How we assess product sustainability >](#)



### Environmental footprint

Total lifecycle Carbon footprint	22 kg CO2 eq.
Carbon footprint of the manufacturing phase [A1 to A3]	21 kg CO2 eq.
Carbon footprint of the distribution phase [A4]	0.5 kg CO2 eq.
Carbon footprint of the installation phase [A5]	0 kg CO2 eq.
Carbon footprint of the use phase [B2, B3, B4, B6]	0 kg CO2 eq.
Carbon footprint of the end-of-life phase [C1 to C4]	0.5 kg CO2 eq.

## Use Better



### Materials and Substances

Packaging made with recycled cardboard	No
Packaging without single use plastic	No
EU RoHS Directive	<a href="#">Compliant</a>
REACH Regulation	<a href="#">Free of Substances of Very High Concern above the threshold</a>

## Use Longer



### Lifetime extension

Repair	No
--------	----

## Use Again



### Repack and remanufacture

Recyclability potential, in %	95
Take-back	Nej
WEEE Label	 The product must be disposed on European Union markets following specific waste collection and never end up in rubbish bins.